

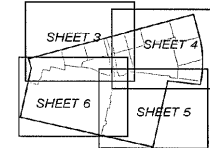
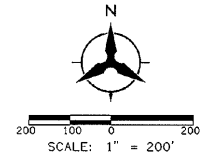
NOTE: SEE SHEETS 3 THRU 7 FOR SUBDIVISION DETAILS

ID	DELTA	TANGENT	ARC	RADIUS	CHORD	CHORD BRC
C1	27° 34' 44"	301.65	591.62	1229.11'	585.92'	501° 14' 45" E
	(27° 34' 43")	(301.72)	(591.73)	(1229.36)	(585.05)	

TABLES ARE FOR THIS SHEET ONLY

ID	BEARING	DISTANCE
T1	N2° 25' 55" E	190.37'
T2	N63° 31' 04" W	68.56'
T3	S12° 48' 38" W	4.37'
	(S12° 48' 43" W)	(3.87')
T4	N14° 59' 22" W	122.28'
	(N13° 15' 20" W)	(122.27')

PLAT OF
UNSER CROSSINGS
(A REPLAT OF TRACTS 1A, 1B, 2A, 2B, 3A, 3B, 4B
& TRACT 6 V.E. BARRETT SUBDIVISION
AND TRACTS 4-A-1, 5-B-1 & 5-B-2
LANDS OF WEFCC, PARTNERS)
ALBUQUERQUE, BERNALILLO COUNTY, NEW MEXICO
JULY, 2008



LEGEND	
	SUBDIVISION BOUNDARY LINE
	EXISTING (OLD) LOT LINE TO BE ELIMINATED WITH THE FLING OF THIS PLAT
	NEW LOT LINE
	CENTERLINE
	PROPOSED EASEMENT LINE
	EXISTING EASEMENT LINE
	ADJOINING PROPERTY LINE
	RIGHT OF WAY
	PUE PUBLIC UTILITY EASEMENT GRANTED WITH THE FLING OF THIS PLAT
	CITY OF ALBUQUERQUE CONTROL MONUMENT
	#5 REBAR WITH YELLOW PLASTIC SURVEY CAP STAMPED "GROMATZKY PS 16469"
	FOUND #5 REBAR/CAP AS NOTED
	FOUND #5 REBAR NO CAP
	EXISTING EASEMENTS VACATED BY VACATION ACTION 08DRB-70282



DOCH 2008103544

09/18/2008 03:41 PM Page: 2 of 7
Plat 8-1537, 03-1, 2008, P. 0209 M. Toulous Oliveira, Bernalillo Co.

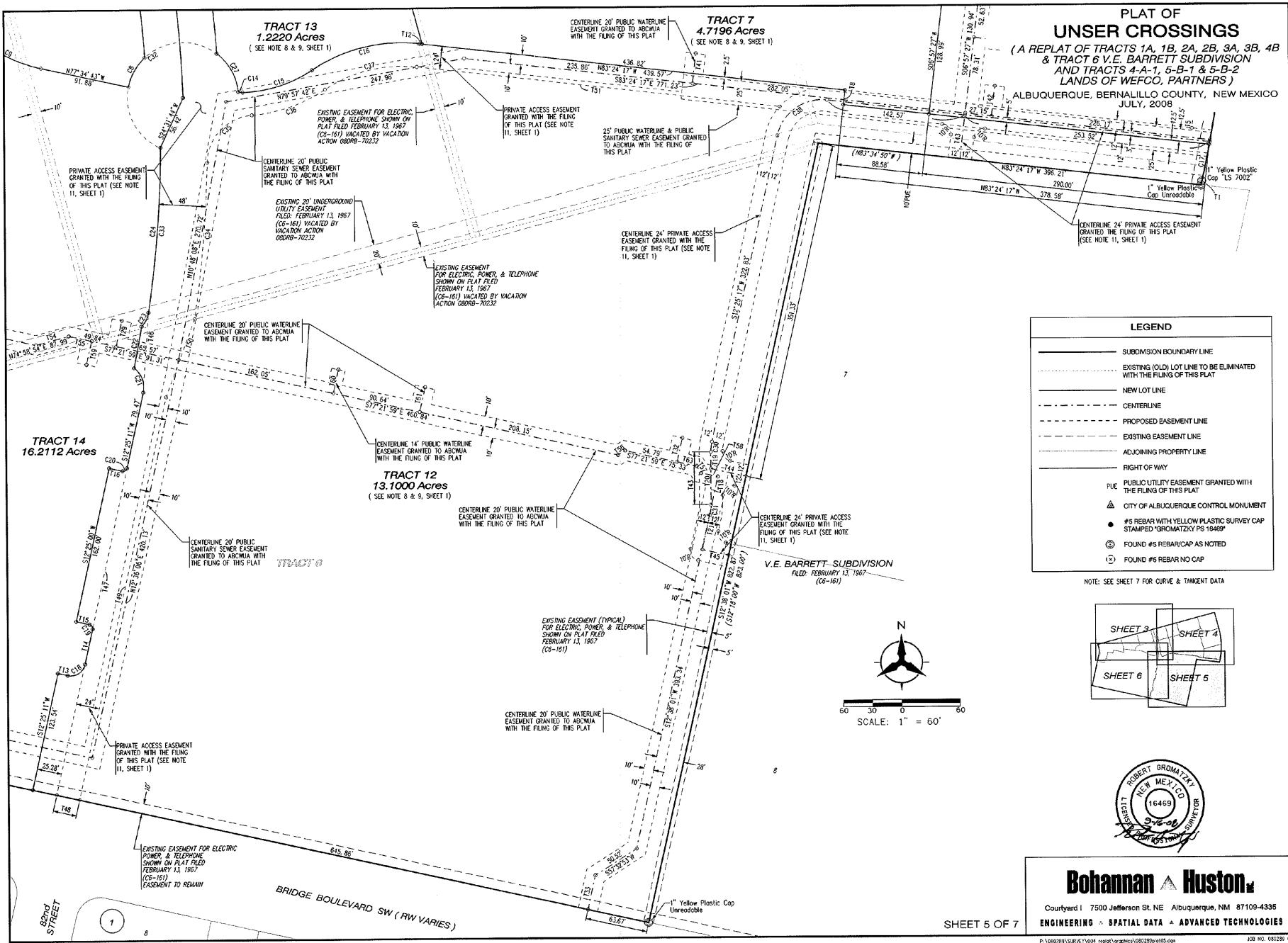
SHEET 2 OF 7

Bohannon & Huston

Courtyard I 7500 Jefferson St. NE Albuquerque, NM 87109-4335
ENGINEERING • SPATIAL DATA • ADVANCED TECHNOLOGIES

P:\080350\SURVEY\CD4 replat\gromatzky\080350\pl02.dgn JOB NO. 090289 004
15-SEP-2008 14:40
mcof

Land Records Corp. FT ALB11955 BE 2008103544.002



DOCR 2008103544

08/19/2008 03:41 PM Page 5 of 7

\\platt01\01357\001\2008\02\0039 N. Toulouse Oliveira, Bernalillo Cour

P:\080289\SURVE\1004 report\graphics\080289a05.dgn
16-SEP-2008
14:44
mde

JOB NO. 080289 004

Land Records Corp. FT ALB11955 BE 2008103544.005

**PLAT OF
UNSER CROSSINGS**
(A REPLAT OF TRACTS 1A, 1B, 2A, 2B, 3A, 3B, 4B
& TRACT 6 V.E. BARRETT SUBDIVISION
AND TRACTS 4-A-1, 5-B-1 & 5-B-2
LANDS OF WEFCO, PARTNERS)
ALBUQUERQUE, BERNALILLO COUNTY, NEW MEXICO
JULY, 2008

Curve Data						
ID	DELTA	TANGENT	ARC	RADIUS	CHORD	CHORD BRG.
C1	27° 34' 44"	301.55'	591.62'	1229.11'	585.92'	S01°14'45"E
	(27° 34' 45")	(301.72')	(591.75')	(1229.36')	(586.05')	
C2	89° 58' 03"	34.98'	54.96'	35.00'	49.48'	S29°59'40"W
C3	27° 36' 07"	73.69'	144.52'	300.00'	143.13'	S01°11'19"E
C4	90° 02' 41"	25.02'	39.29'	25.00'	35.37'	S32°24'36"E
C5	62° 33' 54"	22.46'	40.40'	32.00'	38.43'	S43°41'57"W
C6	08° 34' 35"	22.49'	44.91'	300.00'	44.86'	N10°43'48"W
C7	09° 56' 21"	105.47'	210.42'	1213.00'	210.16'	S08°48'37"E
C8	35° 08' 42"	18.05'	34.95'	57.00'	34.42'	S29°07'40"W
C9	28° 29' 54"	38.09'	74.61'	150.00'	73.84'	N63°19'46"W
C10	25° 49' 36"	45.47'	89.40'	196.33'	88.65'	N66°15'01"W
C11	00° 31' 07"	5.56'	11.12'	1229.11'	11.12'	S14°48'33"E
C12	10° 45' 24"	115.71'	230.75'	1229.11'	230.41'	S09°08'18"E
C13	14° 31' 04"	156.56'	311.44'	1229.11'	310.60'	S03°29'56"W
C14	17° 10' 55"	2.27'	4.50'	15.00'	4.48'	S82°55'32"E
C15	32° 05' 30"	38.83'	75.61'	135.00'	74.63'	N72°26'16"E
C16	40° 12' 12"	60.29'	115.78'	165.00'	113.42'	N68°29'37"E
C17	01° 47' 09"	19.16'	38.31'	1229.11'	38.31'	S11°33'02"W
C18	90° 00' 00"	15.00'	23.56'	15.00'	21.21'	N57°25'11"E
C19	90° 00' 11"	4.00'	6.28'	4.00'	5.66'	N32°34'54"W
C20	89° 59' 49"	4.00'	6.28'	4.00'	5.66'	N57°25'06"E
C21	64° 30' 23"	15.78'	28.15'	25.00'	26.88'	N19°50'00"W
C22	02° 03' 08"	21.67'	43.73'	1221.00'	43.73'	N01°15'24"E
C23	37° 13' 34"	8.42'	16.24'	25.00'	15.96'	N27°08'02"E
C24	07° 58' 50"	85.52'	170.77'	1226.00'	170.63'	N04°31'50"E
C25	13° 11' 43"	144.58'	287.88'	1250.00'	287.24'	N08°25'14"W
C26	10° 05' 13"	113.58'	226.58'	1287.00'	226.28'	S08°49'31"E
C27	46° 40' 10"	24.59'	46.43'	57.00'	45.16'	S28°59'58"E
C28	10° 45' 54"	28.27'	56.37'	300.00'	56.28'	N01°01'34"W
C29	19° 20' 29"	51.12'	101.27'	300.00'	100.79'	S05°20'51"E
C30	12° 11' 31"	5.34'	10.64'	50.00'	10.62'	S06°19'32"W
C31	12° 24' 15"	5.43'	10.82'	50.00'	10.80'	S06°25'54"W
C32	240° 04' 00"	-----	238.83'	57.00'	98.69'	S54°18'07"W
C33	07° 57' 03"	85.20'	170.13'	1226.00'	169.99'	S04°32'43"W
C34	07° 17' 09"	81.11'	162.00'	1274.00'	161.89'	N04°52'40"E
C35	84° 10' 26"	45.16'	73.46'	50.00'	67.03'	N43°19'19"E
C36	29° 01' 01"	41.15'	80.52'	159.00'	79.67'	N70°54'02"E
C37	40° 12' 12"	51.60'	98.94'	141.00'	96.92'	N76°29'37"E
C38	84° 10' 26"	42.45'	69.05'	47.00'	63.00'	S54°30'30"W
C39	36° 54' 18"	8.34'	16.10'	25.00'	15.63'	N05°50'24"W
C40	03° 05' 50"	33.23'	66.44'	1229.11'	66.43'	N02°12'42"W
C41	11° 19' 05"	12.88'	25.68'	130.00'	25.64'	S04°59'46"W
C42	08° 56' 47"	12.71'	25.37'	162.50'	25.35'	S06°10'55"W
C43	06° 57' 21"	74.43'	148.67'	1224.61'	148.58'	S05°11'12"W
C44	80° 41' 45"	16.99'	28.17'	20.00'	25.90'	S49°00'45"W

Tangent Data		
ID	BEARING	DISTANCE
T1	S12°48'38"W	4.37'
	(S12°48'43"W)	(3.87')
T2	N74°58'41"E	44.41'
T3	S14°59'22"E	13.60'
T4	N19°33'49"W	30.14'
T5	N77°35'00"W	20.60'
T6	N19°33'49"W	16.62'
T7	N19°33'49"W	13.52'
T8	S06°35'43"W	15.00'
T9	S74°58'54"W	41.76'
T10	S74°58'54"W	15.00'
T11	S74°58'54"W	56.76'
T12	N83°24'17"W	2.76'
T13	N77°34'49"W	10.28'
T14	S12°25'11"W	37.09'
T15	N77°35'00"W	14.60'
T16	N77°35'00"W	14.01'
T17	N06°50'00"W	13.22'
T18	S00°13'46"W	37.25'
T19	S00°13'46"W	17.00'
T20	S00°13'46"W	54.25'
T21	S12°38'01"W	36.53'
T22	S15°01'45"E	18.65'
T23	S15°01'45"E	11.44'
T24	N12°25'00"E	40.43'
T25	N12°38'01"E	27.37'
T26	N12°38'01"E	31.32'
T27	S12°38'01"W	35.91'
T28	N77°22'51"W	31.85'
T29	N15°01'06"W	32.50'
T30	S15°01'06"E	42.63'
T31	S74°58'15"W	29.92'
T32	N74°58'15"E	37.51'
T33	N74°58'15"E	37.60'
T34	S43°02'33"E	37.77'
T35	N06°35'43"E	30.83'
T36	N06°35'43"E	31.10'
T37	N06°35'43"E	45.58'
T38	S77°11'05"E	36.67'
T39	S77°25'56"E	27.60'
T40	S77°25'56"E	85.82'
T41	S83°24'17"E	374.78'
T42	S06°35'43"W	10.88'
T43	N57°25'02"E	34.65'
T44	N74°58'54"E	34.83'
T45	S77°21'59"E	24.11'
T46	N57°38'01"E	8.49'
T47	S32°21'59"E	8.49'
T48	S77°21'59"E	17.43'
T49	S12°38'01"W	25.00'
T50	S12°38'01"W	25.05'
T51	S12°38'01"W	28.03'
T52	S15°01'18"E	15.00'
T53	S77°21'59"E	20.54'

SHEET 7 OF 7



Bohannon & Huston

Courtyard 1 7500 Jefferson St. NE Albuquerque, NM 87109-4335

ENGINEERING ▴ SPATIAL DATA ▴ ADVANCED TECHNOLOGIES

P:\600289\SUBSET\1604 - replat\graphics\080209pl07.dwg
16-SEP-2008
14:47
mcd

JOB NO. 080209-004

DOC# 2008103544
29/10/2008 03:41 PM Page: 7 of 7
16-SEP-2008
1604 - replat\graphics\080209pl07.dwg
Tolson, Olivier, Bernalillo Cour

Land Records Corp. FT ALB11955 BE 2008103544.007