

1. 24" FINISHED DOWEL, TYP.
2. 3/4" DIA. STAINLESS BOLT, 3/4" DIA. STAINLESS NUT, 1/2" DIA. 10/5-20.
3. FINISHED CONCRETE, 3" MIN. THICK, 10/5-20.
4. FINISHED CONCRETE, 3" MIN. THICK, 10/5-20.
5. 1/2" DIA. 10/5-20.
6. 1/2" DIA. 10/5-20.
7. 1/2" DIA. 10/5-20.
8. 1/2" DIA. 10/5-20.
9. 1/2" DIA. 10/5-20.
10. 1/2" DIA. 10/5-20.
11. 1/2" DIA. 10/5-20.
12. 1/2" DIA. 10/5-20.
13. 1/2" DIA. 10/5-20.
14. 1/2" DIA. 10/5-20.
15. 1/2" DIA. 10/5-20.
16. 1/2" DIA. 10/5-20.
17. 1/2" DIA. 10/5-20.
18. 1/2" DIA. 10/5-20.
19. 1/2" DIA. 10/5-20.
20. 1/2" DIA. 10/5-20.
21. 1/2" DIA. 10/5-20.
22. 1/2" DIA. 10/5-20.
23. 1/2" DIA. 10/5-20.
24. 1/2" DIA. 10/5-20.
25. 1/2" DIA. 10/5-20.
26. 1/2" DIA. 10/5-20.
27. 1/2" DIA. 10/5-20.
28. 1/2" DIA. 10/5-20.
29. 1/2" DIA. 10/5-20.
30. 1/2" DIA. 10/5-20.
31. 1/2" DIA. 10/5-20.
32. 1/2" DIA. 10/5-20.
33. 1/2" DIA. 10/5-20.
34. 1/2" DIA. 10/5-20.
35. 1/2" DIA. 10/5-20.
36. 1/2" DIA. 10/5-20.
37. 1/2" DIA. 10/5-20.
38. 1/2" DIA. 10/5-20.
39. 1/2" DIA. 10/5-20.
40. 1/2" DIA. 10/5-20.
41. 1/2" DIA. 10/5-20.
42. 1/2" DIA. 10/5-20.
43. 1/2" DIA. 10/5-20.
44. 1/2" DIA. 10/5-20.
45. 1/2" DIA. 10/5-20.
46. 1/2" DIA. 10/5-20.
47. 1/2" DIA. 10/5-20.
48. 1/2" DIA. 10/5-20.
49. 1/2" DIA. 10/5-20.
50. 1/2" DIA. 10/5-20.
51. 1/2" DIA. 10/5-20.
52. 1/2" DIA. 10/5-20.
53. 1/2" DIA. 10/5-20.
54. 1/2" DIA. 10/5-20.
55. 1/2" DIA. 10/5-20.
56. 1/2" DIA. 10/5-20.
57. 1/2" DIA. 10/5-20.
58. 1/2" DIA. 10/5-20.
59. 1/2" DIA. 10/5-20.
60. 1/2" DIA. 10/5-20.
61. 1/2" DIA. 10/5-20.
62. 1/2" DIA. 10/5-20.
63. 1/2" DIA. 10/5-20.
64. 1/2" DIA. 10/5-20.
65. 1/2" DIA. 10/5-20.
66. 1/2" DIA. 10/5-20.
67. 1/2" DIA. 10/5-20.
68. 1/2" DIA. 10/5-20.
69. 1/2" DIA. 10/5-20.
70. 1/2" DIA. 10/5-20.
71. 1/2" DIA. 10/5-20.
72. 1/2" DIA. 10/5-20.
73. 1/2" DIA. 10/5-20.
74. 1/2" DIA. 10/5-20.
75. 1/2" DIA. 10/5-20.
76. 1/2" DIA. 10/5-20.
77. 1/2" DIA. 10/5-20.
78. 1/2" DIA. 10/5-20.
79. 1/2" DIA. 10/5-20.
80. 1/2" DIA. 10/5-20.
81. 1/2" DIA. 10/5-20.
82. 1/2" DIA. 10/5-20.
83. 1/2" DIA. 10/5-20.
84. 1/2" DIA. 10/5-20.
85. 1/2" DIA. 10/5-20.
86. 1/2" DIA. 10/5-20.
87. 1/2" DIA. 10/5-20.
88. 1/2" DIA. 10/5-20.
89. 1/2" DIA. 10/5-20.
90. 1/2" DIA. 10/5-20.
91. 1/2" DIA. 10/5-20.
92. 1/2" DIA. 10/5-20.
93. 1/2" DIA. 10/5-20.
94. 1/2" DIA. 10/5-20.
95. 1/2" DIA. 10/5-20.
96. 1/2" DIA. 10/5-20.
97. 1/2" DIA. 10/5-20.
98. 1/2" DIA. 10/5-20.
99. 1/2" DIA. 10/5-20.
100. 1/2" DIA. 10/5-20.

19. REMOVE EXISTING CURB/CHALK AND PREPARE FOR NEW 20'-0" C.C. PER C.O.A.

20. 50'FT DISTANCE EXHIBIT. 11'x11' SIGN FRAMED, NOTE: LANSCHING AND

21. AS APPROVED FROM THE UTILITY PANEL WILL NOT BE ACCEPTABLE IN THE C.O.A.

22. DOWNSIDE ENCLOSURE. REF DETAIL A1-65-10

23. 12" WC ON ASPHALT PAVING IN DOWN LITTERS. REF DETAIL M/S-5-10.

24. 12" WC ON ASPHALT PAVING IN DOWN LITTERS. REF DETAIL M/S-5-10.

25. EXISTING CONCRETE CURB OUT/PAVE FOR NO WORK. C.O.A. STANDARD REF DETAIL 242

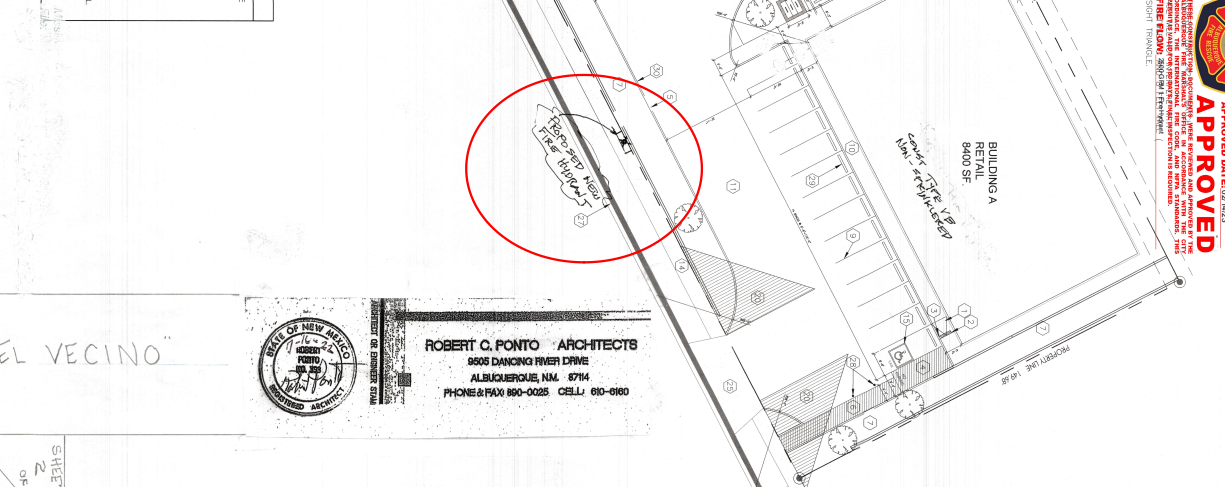

26. EXISTING CONCRETE CURB OUT/PAVE FOR NO WORK. C.O.A. STANDARD REF DETAIL 242

27. EXIST. CURB. CONCRETE AND GUTTERS

28. 6" C.O.A. EXIST. ROAD. REF DETAIL C/A-5-10.

29. 6" C.O.A. EXIST. ROAD. REF DETAIL C/A-5-10.

30. CONSTRUCT NEW BUILT CONCRETE CURB AND GUTTER PER C.O.A. STANDARD DRAWING 24

[illegible]

REGISTERED PROFESSIONAL
ENGINEER
STATE OF NEW MEXICO

ROBERT C. PONTO ARCHITECTS
9505 DANCING RIVER DRIVE
ALBUQUERQUE, NM. 87114
PHONE & FAX: 850-0025 CELL: 610-6160