

DRAINAGE CALCULATIONS - SOUTH SIDE PONDING (BACKYARDS ONLY)

CRITERIA: 100 YR - 6 HR STORM
ZONE 1
LAND TREATMENT "C"
RUNOFF AREA = 760 SF ≈ 0.017 ACRES (PER LOT)
Ec = 0.99 INCHES

$VOLUME_{360} = \frac{0.99 \times 0.017}{12} = 0.0014 \text{ AC. FT.}$

$VOLUME_{1440} = VOLUME_{360} + A_D \left(\frac{P_{1440} - P_{360}}{12} \right)$

THEREFORE:

$VOLUME_{1440} = VOLUME_{360}$

$VOLUME_{POND, REQ'D.} = 0.0014 \text{ AC. FT.} \times 43560 \text{ S.F./AC.} = 62.7 \text{ CU. FT.}$

$VOLUME_{PROVIDED} = 63 \text{ CU. FT.}$

KEYED NOTES

1. CONSTRUCT 268.5 LF OF 2' ALLEY GUTTER @ SLOPE = 0.84% PER COA STD DWG 2415A. *0.84%*
2. CONSTRUCT CONCRETE DRIVEWAY PER COA STD DWG 2425.
3. CONSTRUCT CONCRETE LEAD WALK PER COA STD DWG 2430.
4. APPROXIMATE LIMITS OF BACKYARD PONDING AREA.

DRAINAGE CERTIFICATION

I, Karen M. Menne-Jacobsen, NMPE 15569, of the firm WHPacific, Inc., hereby certify that this project has been graded and will drain in substantial compliance with and in accordance with the design intent of the approved plan dated October 2010. The record information edited onto the original design document has been obtained by NMPS Anthony Harris of the firm, Harris Surveying. I further certify that I have personally visited the project site on and have determined by visual inspection that the survey data provided is representative of actual site conditions and is true and correct to the best of my knowledge and belief. This certification is submitted in support of a request for Certificate of Occupancy.

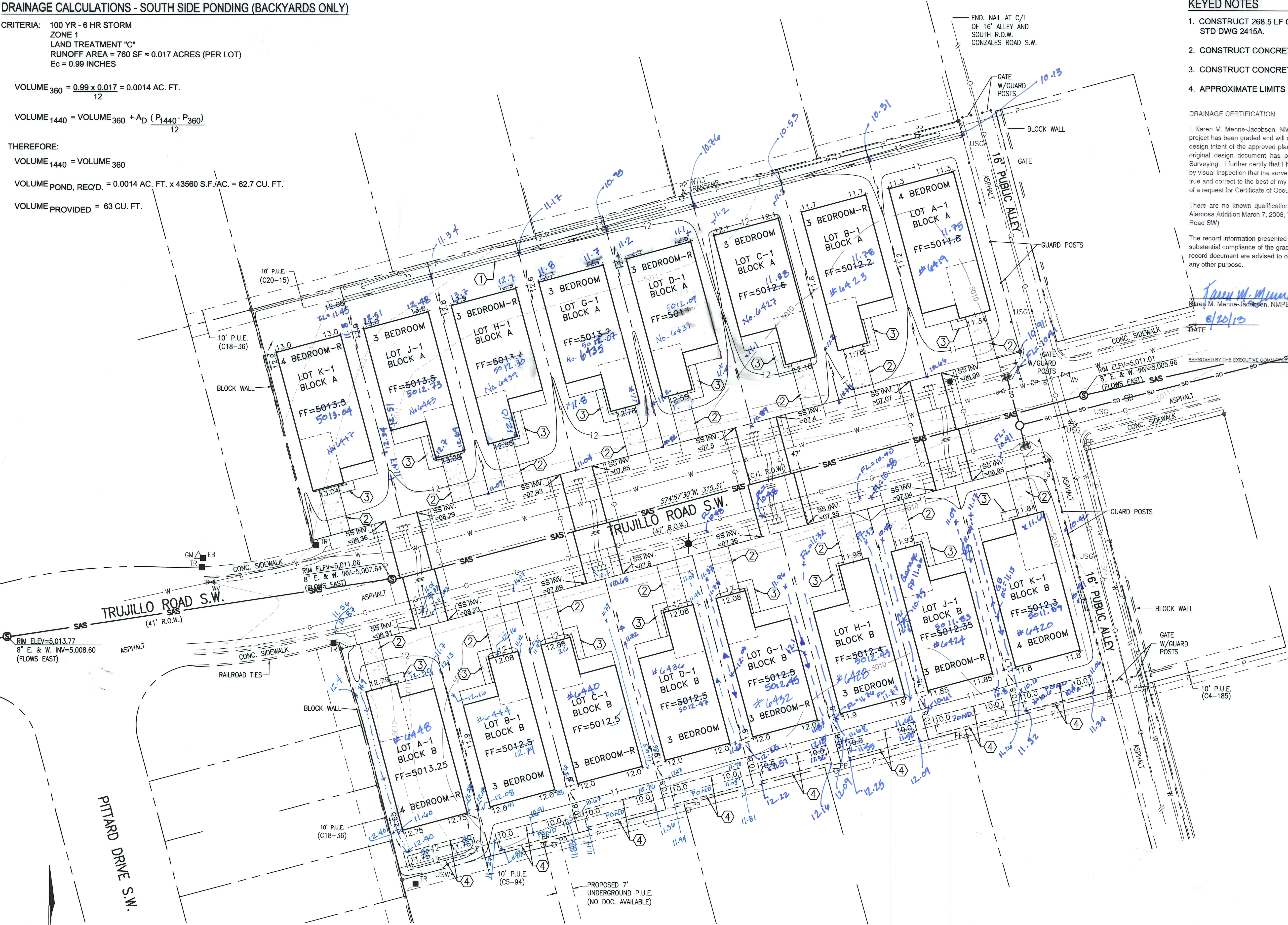
There are no known qualifications or discrepancies and this is in regard to Lot Block "A" & "B" Alamosa Addition March 7, 2006, Volume 2006C Folio 76 Trujillo Road SW only. *6419-6448*

The record information presented herein is not necessarily complete and intended only to verify substantial compliance of the grading and drainage aspects of this project. Those relying on this record document are advised to obtain independent verification of its accuracy before using it for any other purpose.

Karen M. Menne-Jacobsen
Karen M. Menne-Jacobsen, NMPE 15569

DATE *8/20/10*

APPROVED BY THE EXECUTIVE COMMISSIONER



GENERAL NOTES:

1. EXISTING TOPOGRAPHY SHOWN WAS TAKEN FROM AVAILABLE RECORDS AND DOES NOT REPRESENT AN ACTUAL FIELD SURVEY.
2. DRAINAGE PONDS AND SWALES MUST REMAIN IN PLACE IN PERPETUITY UNLESS OTHER DRAINAGE FACILITIES ARE DESIGNED AND CONSTRUCTED WITH CITY OF ALBUQUERQUE APPROVAL.

WHPacific

6501 Americas Pkwy NE, Suite 400
Albuquerque, NM 87110
505-247-0294 Fax 505-242-4845
www.whpacific.com

CITY OF ALBUQUERQUE
PUBLIC WORKS DEPARTMENT

GRADING PLAN

Design Review Committee	City Engineer Approval	Mo./Day/Yr.	Mo./Day/Yr.
City Project No. XXXX.XX	Zone Map No. K-11-Z	Sheet 3	Of 4