

ALAMOSA NEIGHBORHOOD - TOWNSEND AVENUE, S.W.

UTILITY COMPANY CONTACTS

FEBRUARY 08, 2006

Name/Phones	Business	Name/Phones	Business
Mushinski, Nancy Office phone: (505) 768-2729 Office fax: (505) 768-3629 nmushinski@cdm.com	City of Albuquerque Senior Engineer, Utilities Development P.O. Box 1293 Albuquerque, NM 87103	Harrison, Royce Office phone: (505) 938-7339 Office fax: 938-7380 Royce.Harrison@cityofalb.com	Time Warner Telecom Plant Manager 3830 Slinger Blvd, NE, Suite 1000 Albuquerque, NM 87109
Bates, Steve Office phone: (505) 998-2661ext48 Office fax: (505) 898-6379 sbates@ecorresources.com	New Mexico Utilities 4700 Irving Blvd, NW Suite 201 Albuquerque, NM 87114	Hill, Jim Office phone: (505) 241-3581 Office fax: (505) 241-0559 jhill@pnm.com	PNM Electric 4201 Edith Blvd, NE MS-ES61 Albuquerque, NM 87107
Bouska, Kelly Office phone: (505) 241-7732 Office fax: (505) 241-7740 kbouska@pnm.com	PNM Gas Co. 4825 Edith Blvd, NE Albuquerque, NM 87107	Kelly, Larry Office phone: (505) 246-0501 Office fax: (505) 246-0479 Larry.Kelly@qwest.com	Quest Long Distance St. Operations Tech 400 Teras NW, Suite 570 Albuquerque, NM 87102
Brown, John Office phone: (505) 243-2153 Office fax: (505) 314-0900 johnb@qwest.com	BCG Assets Operations Manager 721 4th Street, NW Albuquerque, NM 87102	Merrill, Steve Office phone: (505) 988-2220 Office fax: (505) 345-6559 Steve.Merrill@xpedius.com	Xpedius Management Co. Operations Support Manager 505 Marquette NW, Ste 1605 Albuquerque, NM 87109
Crowe, David Office phone: (505) 842-2911 Office fax: 842-2990 dcrowe@ent.com	AT&T Resource Supervisor 111 3rd Street, NW Albuquerque, NM 87103	Mueller, Rick Office phone: (505) 244-3161 Office fax: 244-0094 Mobile: 228-3329 rdmueller@mdedeusa.com	Meland USA Supervisor of Outside Techns. 505 Marquette NW (Compass Bank) Suite 1600 Albuquerque, NM 87102
Dornell, Andy Office phone: (505) 346-4470 Office fax: 346-4461 Andy.Dornell@msi.com	MCI Worldcom Operations Manager 6001 Midway Park, NE Albuquerque, NM 87109	Velarde, Michael D. Office phone: (505) 245-8352 Office fax: (505) 245-6733 Mobile: (505) 715-9263 Pager: (505) 381-3347 michael.velarde@qwest.com	Quest Manager Engineering 400 Teras NW, Room 710 Albuquerque, NM 87102
Erickson, Rita Office phone: (505) 761-6235 Office fax: (505) 761-0599 rita_erickson@ccble.comcast.com	Comcast Planning and Design Supervisor 4511 Monbel Place NE Albuquerque, NM 87107		



- ### DRAWING LIST
- 1 TITLE SHEET
 - 2 GENERAL NOTES, DETAILS, AND LEGEND
 - 3 PLAN
 - 4 INTERIM GRADING AND DRAINAGE PLAN
 - 5 PAVING PLAN AND PROFILE
 - 6 UTILITY PLAN AND PROFILE

APPROVED FOR CONSTRUCTION
DATE: 2/8/06
SIGNATURE: [Signature]

REV.	SHEETS	CITY ENGINEER	DATE	USER DEPARTMENT	DATE	USER DEPARTMENT	DATE

Elevations are in NGVD 29

DMJMHN
6501 ALAMOSA PARKWAY, NE, SUITE 700
ALBUQUERQUE, NEW MEXICO 87110
TEL: (505) 883-4100
FAX: (505) 884-7231



ENGINEERS STAMP & SIGNATURE	APPROVALS	DATE	ENGINEER	DATE	APPROVED FOR CONSTRUCTION	DATE
[Signature]						

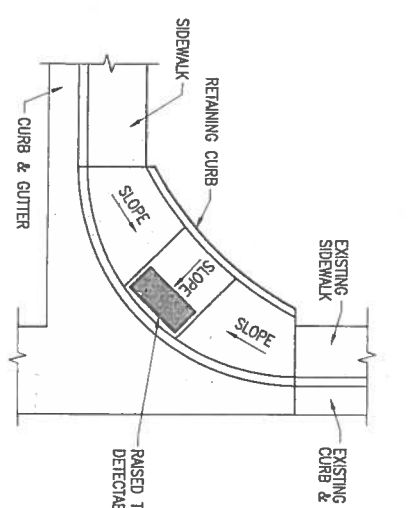
City Project No. 6767.08
Sheet 1 of 6

GENERAL NOTES

1. ALL WORK DETAILED ON THESE DRAWINGS TO BE PERFORMED UNDER THIS CONTRACT SHALL, EXCEPT AS OTHERWISE STATED, BE STANDARD SPECIFICATIONS FOR PUBLIC WORKS CONSTRUCTION, 1986, AS AMENDED THROUGH UPDATES NO. 7, HEREBY REFERRED TO AS THE SPECIFICATIONS. REFERENCES MADE TO STANDARD DRAWINGS IMPLY THAT SECTION OF THE SPECIFICATIONS, WHICH INCLUDES MISCELLANEOUS STANDARD DETAILS.
2. LOCATION OF UTILITIES ARE APPROXIMATE. IT IS THE CONTRACTOR'S RESPONSIBILITY TO LOCATE ALL PERMANENT UTILITIES IN THE FIELD. CALL NEW MEXICO ONE CALL SYSTEM, INC. AT 260-1990 TWO WORKING DAYS BEFORE ANY EXCAVATION.
3. IT IS THE CONTRACTOR'S RESPONSIBILITY TO SUPPORT ALL UTILITIES EXPOSED DURING CONSTRUCTION. CONTRACTOR WILL BE RESPONSIBLE FOR DAMAGE TO ALL UTILITIES, INCLUDING SERVICE LINES.
4. PRIOR TO CONSTRUCTION, THE CONTRACTOR SHALL EXCAVATE AND VERIFY THE HORIZONTAL AND VERTICAL LOCATIONS OF ALL OBSTRUCTIONS. SHOULD A CONFLICT EXIST, THE CONTRACTOR SHALL NOTIFY THE PUBLIC WORKS DEPARTMENT SO THAT THE CONFLICT CAN BE RESOLVED WITH MINIMUM AMOUNT OF DELAY.
5. ALL STREET STRIPING ALTERED OR DESTROYED SHALL BE REPLACED WITH PLASTIC REFLECTORIZED PAVEMENT MARKING BY CONTRACTOR TO LOCATION AS EXISTING OR INDICATED BY THIS PLAN SET, AS PER C.O.A. STANDARDS.
6. ALL PAVERS MARKINGS OR OTHER TRAFFIC CONTROL DEVICES INCLUDING TRAFFIC SIGNAL CONDUIT, ADVERSELY AFFECTED BY CONSTRUCTION SHALL BE REPLACED IN PRE-CONSTRUCTION CONDITION. THESE COSTS SHALL BE INCIDENTAL TO THE PROJECT UNLESS OTHERWISE INCLUDED IN BID ITEMS.
7. CONTRACTOR SHALL COORDINATE WITH PNM WHERE UP OF TRENCH IS LESS THAN 5' TO POWER POLE. COSTS ASSOCIATED WITH SUPPORT OF EXISTING POLES SHALL BE INCIDENTAL TO THE PROJECT.
8. CONTRACTOR SHALL BE CHARGED BY PNM FOR ANY DAMAGE TO PNM CABLES AND FOR SUPPORTING OR MINOR RELOCATIONS OF CABLES DURING CONSTRUCTION. THESE COSTS SHALL BE INCIDENTAL TO THE PROJECT.
9. THE CONTRACTOR SHALL PROVIDE TWO PROJECT CONSTRUCTION SIGNS PER REQUIREMENTS OF SPECIAL PROVISIONS.
10. CONTRACTOR SHALL NOTIFY THE CITY SURVEYOR NOT LESS THAN SEVEN (7) DAYS PRIOR TO STARTING WORK IN ORDER THAT THE CITY SURVEYOR MAY TAKE NECESSARY MEASURES TO INSURE THE PRESERVATION OF SURVEY MONUMENTS. CONTRACTOR SHALL NOT DISTURB PERMANENT SURVEY MONUMENTS WITHOUT THE CONSENT OF THE CITY SURVEYOR AND SHALL NOTIFY THE CITY SURVEYOR AND BEAR THE EXPENSE OF REPLACING ANY THAT MAY BE DISTURBED WITHOUT PERMISSION. REPLACEMENT SHALL BE DONE ONLY BY THE CITY SURVEYOR SECTION. WHEN A CHANGE IS MADE IN THE FINISHED ELEVATION OF THE PAVEMENT OF ANY ROADWAY IN WHICH A PERMANENT SURVEY MONUMENT IS LOCATED, THE CONTRACTOR SHALL AT HIS OWN EXPENSE ADJUST THE MONUMENT TO COVER TO THE NEW GRADE UNLESS OTHERWISE SPECIFIED. REFER TO SECTION 4.4 OF THE GENERAL CONDITIONS.
11. FIVE (5) WORKING DAYS PRIOR TO BEGINNING CONSTRUCTION, THE CONTRACTOR SHALL SUBMIT TO THE CONSTRUCTION COORDINATION DIVISION A DETAILED CONSTRUCTION SCHEDULE. TWO (2) WORKING DAYS PRIOR TO CONSTRUCTION, THE CONTRACTOR SHALL OBTAIN A BARRIAGE PERMIT FROM THE CONSTRUCTION COORDINATION DIVISION. CONTRACTOR SHALL NOTIFY BARRIAGE ENGINEER (924-3460) PRIOR TO OCCUPYING AN INTERSECTION. SEE SECTION 19 OF THE SPECIAL PROVISIONS.
12. THE CONTRACTOR SHALL BE RESPONSIBLE FOR MAINTAINING ACCESS TO ALL ADJACENT PROPERTIES.
13. ALL EXCAVATION, TRENCHING, AND SHORING ACTIVITIES MUST BE CARRIED OUT IN ACCORDANCE WITH OSHA 29CFR 1926.650 SUBPART P.
14. CONTRACTOR IS ADVISED TO VISIT THE PROJECT SITE PRIOR TO BIDDING AND FAMILIARIZE THEMSELVES WITH FIELD CONDITIONS INCLUDING THE LOCATION OF UTILITIES SHOWN ON THE PLANS AND OTHER UTILITIES/OBSTACLES CLEARLY VISIBLE IN THE FIELD. IT IS THE RESPONSIBILITY OF THE CONTRACTOR TO PLAN THEIR CONSTRUCTION METHODS TO ADEQUATELY SUPPORT AND/OR AVOID ALL UTILITIES SHOWN ON THE PLANS AND ALL UTILITIES/OBSTACLES CLEARLY VISIBLE IN THE FIELD. ANY RELOCATION OF UTILITIES/OBSTACLES SHOWN ON THE PLANS OR VISIBLE IN THE FIELD IN ORDER TO COMPLETE THE REQUIRED WORK WILL BE CONSIDERED TO BE CONTRACTOR CONVENIENCE AND BE THE RESPONSIBILITY OF THE CONTRACTOR, UNLESS THE UTILITY/OBSTACLE IS IDENTIFIED ON THE PLANS AS BEING RELOCATABLE AS PART OF THE PROJECT. IT WILL BE THE RESPONSIBILITY OF THE CONTRACTOR TO COORDINATE ALL REQUIRED RELOCATIONS WITH APPROPRIATE UTILITIES/INDIVIDUALS.

UTILITY GENERAL NOTES

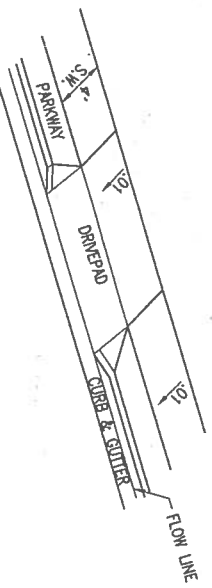
15. ELECTRICAL, TELEPHONE AND CABLE WILL BE ROUTED OVERHEAD ON NEW AND EXISTING POLES. POLES SHALL BE PROVIDED AND INSTALLED BY PNM.
16. CONTRACTOR SHALL COORDINATE ALL UTILITY WORK WITH PNM GAS AND ELECTRIC, COMCAST, AND ONEST.
17. ELECTRONIC MARKER DISCS (EMD) WILL BE PLACED ACCORDING TO SECTION 170 OF THE C.O.A. STANDARD SPECIFICATION FOR PUBLIC WORKS CONSTRUCTION, 1986 EDITION AS REVISED THROUGH UPDATE #7.
18. CONTRACTOR SHALL MAINTAIN A GRAFFITI-FREE WORK SITE. CONTRACTOR SHALL PROPERLY REMOVE ANY AND ALL GRAFFITI FROM EQUIPMENT, WHETHER PERMANENT OR TEMPORARY.
19. THE CONTRACTOR WILL BE RESPONSIBLE FOR DISPOSAL OF ALL DEBRIS, INCLUDING, BUT NOT LIMITED TO HAZARDOUS WASTE AT DISPOSAL SITES APPROVED BY GOVERNMENTAL AGENCIES REGULATING THE DISPOSAL OF SUCH MATERIALS.



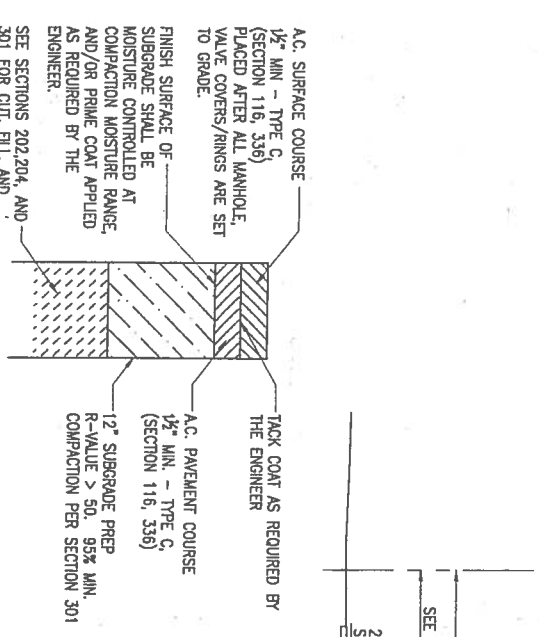
ADA RAMP DETAIL

LEGEND

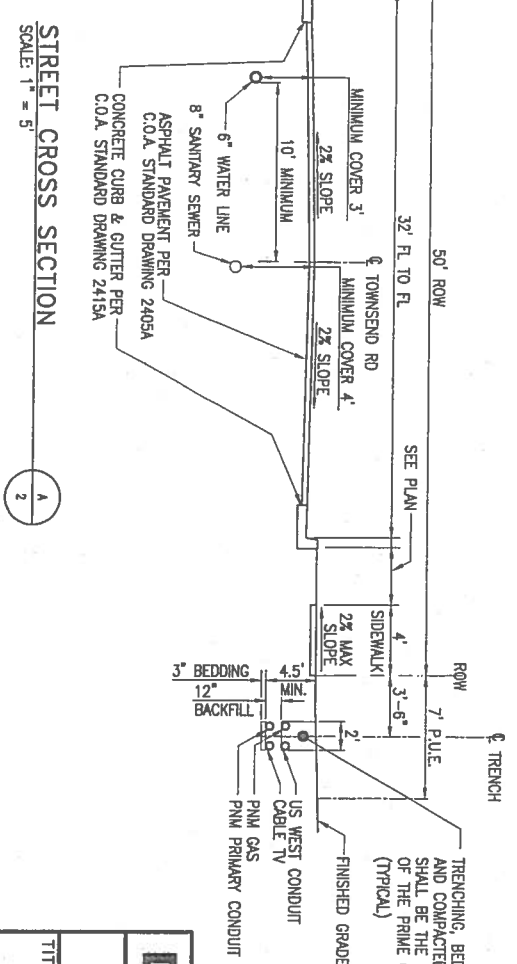
- FUTURE**
- 1. ELECTRONIC MARKER DISCS (EMD) SHALL BE INSTALLED ON ALL NEW WATER AND SEWER SYSTEMS IN ACCORDANCE WITH SPEC. SECTION 170.
 - 2. USE SCHEDULE 80 PVC FOR SEWER SERVICES AND PROVIDE NO JOINT WITHIN 5 FEET OF WATER MAIN CROSSING.
 - 3. ALL WATER METER BOXES AND COVER PLATES SHALL BE HEAVY DUTY/TRAFFIC RATED.
- EXISTING**
- 2"-6" HP - GAS LINE
 - 6"-W - WATER LINE
 - 8"-SAS - SANITARY SEWER
 - 5011 - MINOR CONTOUR
 - 5015 - MAJOR CONTOUR
 - 5014.08 - SPOT ELEVATION
 - 5014.08 - JOINT UTILITY TRENCH
 - 5014.08 - PUBLIC UTILITY EASEMENT
- PROPOSED**
- PP W/1 - POWER POLE W/LIGHT
 - PROPERTY LINE
 - FOUND MONUMENT
 - UNDERGROUND SPOT - GAS
 - TOP OF CURB ELEVATION
 - CONCRETE
 - ASPHALT
 - BUILDING
 - GAS LINE
 - GAS SERVICE
 - OVERHEAD POWER LINE
 - FIRE HYDRANT
 - SANITARY WATER METER
 - SANITARY SEWER MANHOLE
 - SEWER SERVICE
 - DIRECTION OF FLOW
 - DRAINAGE BOUNDARY



ADA DRIVEPAD



FLEXIBLE PAVEMENT SECTION



STREET CROSS SECTION

DMJMHN

CITY OF ALBUQUERQUE
PUBLIC WORKS DEPARTMENT
ENGINEERING DEVELOPMENT GROUP

TITLE: ALAMOSA NEIGHBORHOOD - TOWNSEND AVENUE, S.W.
GENERAL NOTES, DETAILS AND LEGEND

DESIGNED BY: M.T.	DATE: MARCH 2006
DRAWN BY: J.L.M.	DATE: MARCH 2006
CHECKED BY: D.J.L.	DATE: MARCH 2006

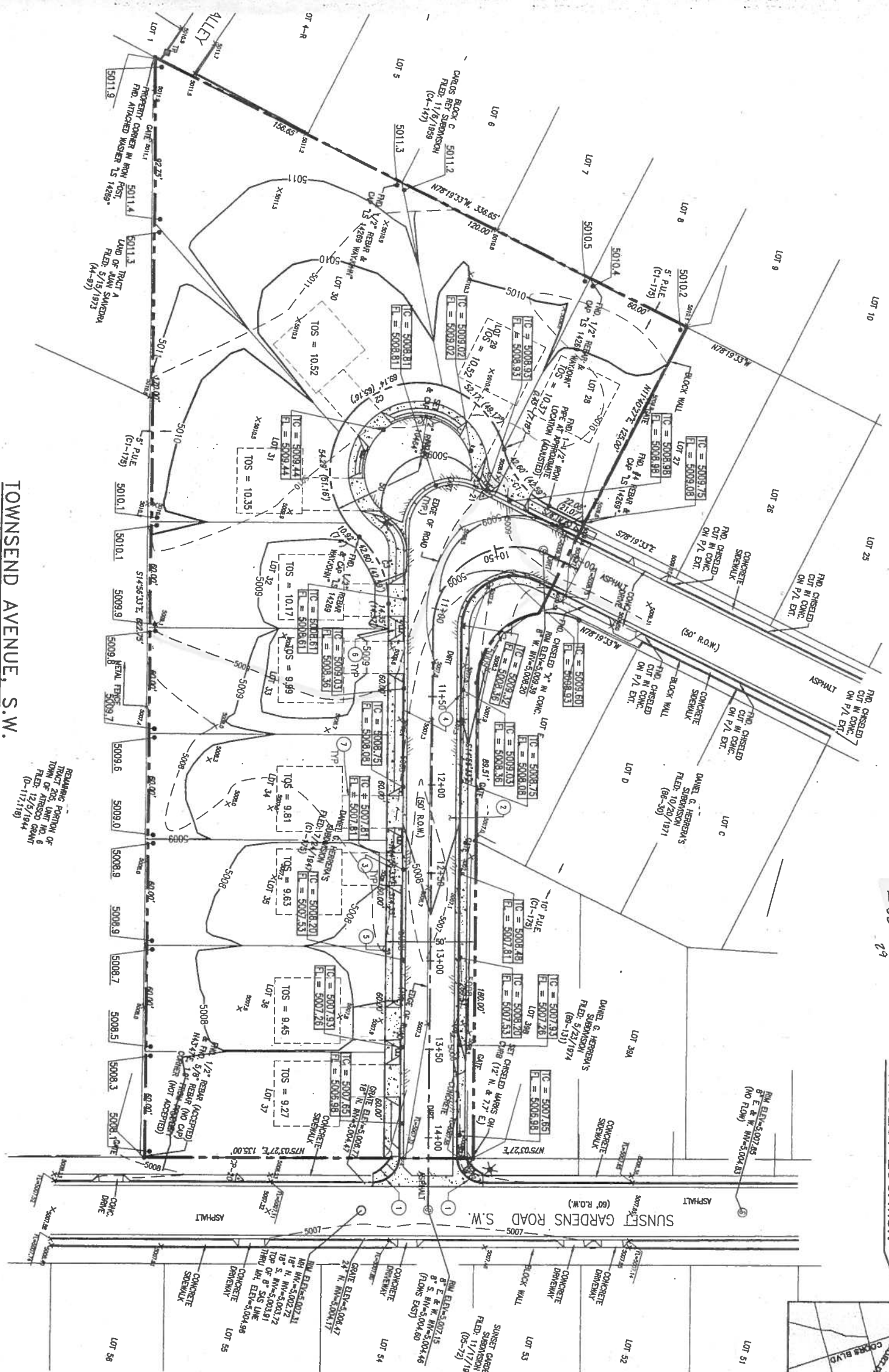
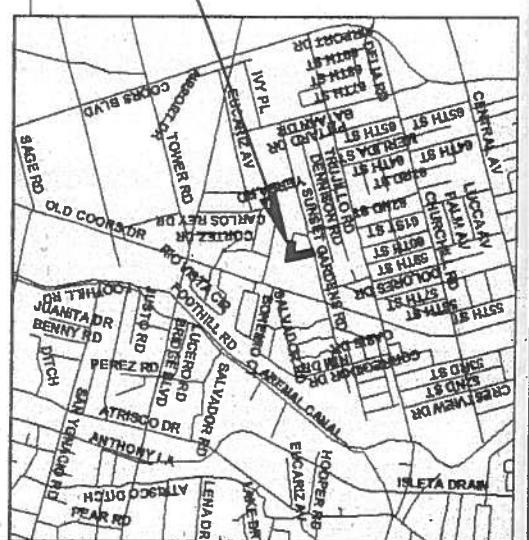


ENGINEER'S SEAL		SURVEY INFORMATION		BENCH MARKS		AS BUILT INFORMATION	
REVISIONS		FIELD NOTES		AC8 NMSHC ALUMINUM CAP STAMPED		CONTRACTOR	
NO.	DATE	NO.	BY	NO.	DATE	NO.	DATE
				2-L10, 1989 LOCATED IN THE SOUTHEAST QUADRANT OF THE INTERSECTION OF COORB BLVD. AND BRIDGE BLVD. THE CAP IS ON THE NORTH-WEST NOSE OF THE TRAFFIC ISLAND.		CONTRACTOR	
				ELEVATION = 5033.25 NGVD 29		DATE	
						BY	
						DATE	
						DATE	
						DATE	
						DATE	
						DATE	

EXISTING DRAINAGE CONDITIONS		DEVELOPED DRAINAGE CONDITIONS				
ZONE 1	TREATMENT	VOL. (MG)	Q (MG)	TREATMENT	VOL. (MG)	Q (MG)
DRAINAGE AREA 1	2.25 ACRES A	0.133	4.62	1.82 ACRES B	0.271	8.20
	0.60 ACRES C			1.03 ACRES C		

THE PROCEDURE USED TO DETERMINE PEAK FLOWS WAS AS DESCRIBED IN THE CITY OF ALBUQUERQUE DEVELOPMENT PROCESS MANUAL (DPM), CHAPTER 22, PART A FOR WATERSHEDS UP TO 40 ACRES. THIS PROJECT IS LOCATED IN ZONE 1 AND INTERMEDIATE NUMBERS WERE TAKEN OFF THE TABLES IN THIS SECTION OF THE DPM.

PROJECT LOCATION
 FEMA BEE-LDR# 11/20/03
 -5009
 29



TOWNSEND AVENUE, S.W.
 SCALE: 1" = 30'



REMAINING PORTION OF TRACT 203 AMT NO. 6 FILED 12/15/1944 (D-117-1119)

- KEYED NOTES**
- REMOVE EXISTING CURB & GUTTER AND CONSTRUCT WHEEL CHAIR CURB ACCESS RAMP PER C.O.A. STANDARD DRAWING # 2428.
 - INSTALL ASPHALT PAVEMENT PER C.O.A. STD. DWG. 2405A.
 - INSTALL DRIVE PAD PER C.O.A. STD. DWG. 2425.
 - INSTALL CONCRETE STANDARD CURB & GUTTER PER C.O.A. STD. DWG. 2415A.
 - INSTALL 4" WIDE CONCRETE SIDEWALK PER C.O.A. STD. DWG. 2430, SECTION B-B.
 - 6" CONCRETE PAD AT WATER METER PER C.O.A. STANDARD DRAWINGS 2361, CASE 1 OR CASE 2, AND 2362.
 - FUTURE CONCRETE DRIVEWAY, INSTALLED BY OTHERS.



SURVEY INFORMATION		
FIELD NOTES		
NO.	BY	DATE

BENCH MARKS	
ACS NMBHC ALUMINUM CAP STAMPED	
"2-10, 1986" LOCATED IN THE SOUTHEAST QUADRANT OF THE INTERSECTION OF COORS BLVD. AND BRIDGE BLVD. THE CAP IS ON THE NORTHWEST NOSE OF THE TRAFFIC ISLAND.	
ELEVATION = 5033.25 NGVD 29	

AS BUILT INFORMATION	
CONTRACTOR	
STARTED BY	
INSPECTOR'S APPROVAL	
DATE	
FIELD VERIFICATION BY	
DATE	
CONNECTION BY	
DATE	
MICRO-FILM INFORMATION	
RECORDED BY	
DATE	
NO.	

LEGAL DESCRIPTION
 LOTS 26 - 37,
 TOWNSEND AVENUE, SW
 DANIEL G. HERRERA SUBDIVISION

DMJMHN
 CITY OF ALBUQUERQUE
 PUBLIC WORKS DEPARTMENT
 ENGINEERING DEVELOPMENT GROUP

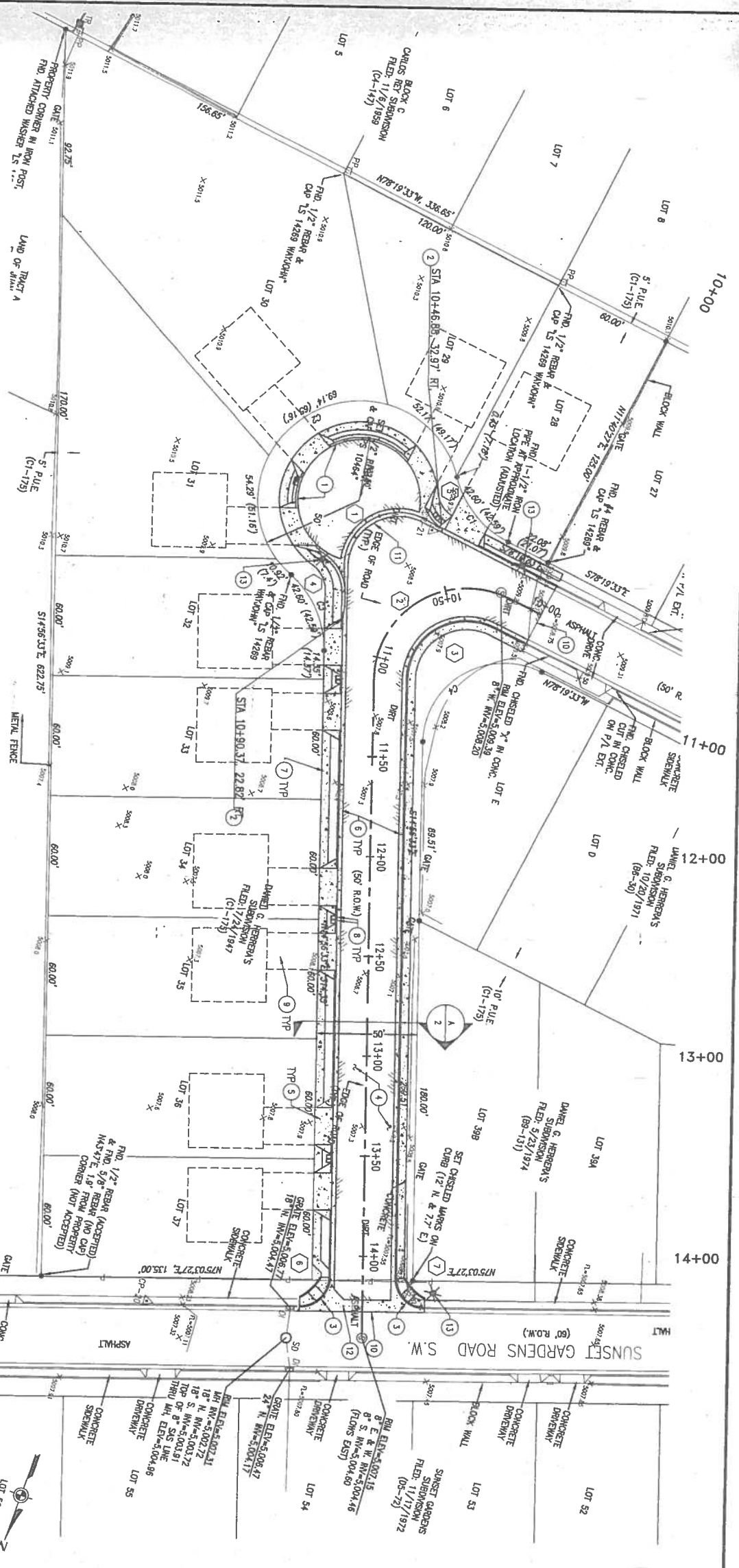
TITLE: ALAMOSA NEIGHBORHOOD - TOWNSEND AVENUE, S.W.
 INTERIM GRADING AND DRAINAGE PLAN

Design Review Committee City Engineer Approval

City Project No. 6767.08
 Zone Map No. K-11

NO.	DATE	REMARKS	BY

DESIGNED BY: M.T. DATE: MARCH 2006
 DRAWN BY: J.L.M. DATE: MARCH 2006
 CHECKED BY: D.J.L. DATE: MARCH 2006



TOWNSEND AVENUE, S.W.

Elevations are in NGVD 29

9+50	4985	BEGIN PROJECT STA. 10+00.00 CL. ELEV. = 5009.50
10+00	4990	
11+00	4995	
12+00	5000	
13+00	5005	
14+00	5010	
15+00	4985	

HORIZ. SCALE: 1" = 30'
VERT. SCALE: 1" = 5'

KEYED NOTES

1. INSTALL MOUNTABLE CURB AND GUTTER IN CUL-DE-SAC PER C.O.A. STANDARD DWG 2415A.
2. BEGIN TRANSITION TO MOUNTABLE CURB AND GUTTER.
3. REMOVE EXISTING CURB & GUTTER AND CONSTRUCT WHEEL CHAIR CURB ACCESS RAMP PER C.O.A. STANDARD DRAWING # 2428.
4. INSTALL ASPHALT PAVEMENT PER C.O.A. STD. DWG. 2405A.
5. INSTALL DRIVE PAD PER C.O.A. STD. DWG. 2425.
6. INSTALL CONCRETE STANDARD CURB & GUTTER PER C.O.A. STD. DWG. 2415A. INSTALL EXPANSION JOINT IN CURB AND GUTTER AT CURB RETURNS. SEE C.O.A. STANDARD DRAWING NO. 2415A GENERAL NOTE NO. 2 FOR ADDITIONAL INFORMATION.
7. INSTALL 4" WIDE CONCRETE SIDEWALK PER C.O.A. STD. DWG. 2430.
8. 6" CONCRETE PAD AT WATER METER PER C.O.A. STANDARD DRAWINGS 2361 AND 2362 WITH HEAVY DIRT COVER AND LID PER STD. DWG. 2389.
9. FUTURE CONCRETE DRIVEWAY - INSTALLED BY OTHERS.
10. MATCH EXISTING ASPHALT AND GRADE.
11. INSTALL 4" VALLEY GUTTER PER C.O.A. STANDARD DRAWING 2421.
12. INSTALL 6" CONCRETE VALLEY GUTTER PER C.O.A. STANDARD DRAWING 2420.
13. INSTALL NEW STREET LIGHTS PER C.O.A. STD. DRAWINGS 2389 AND 2361. LIGHTS WILL BE CONNECTED BY PNM ELECTRIC.

CURVE TABLE

NO.	DELTA	R	T	L	REMARKS
1	238° 40' 49"	27.00'	48.03'	57.17'	○ CL
2	243° 31' 27"	46.00'	74.30'	93.51'	○ CL
3	243° 31' 28"	30.00'	48.46'	60.99'	○ CL
4	300° 02' 24"	22.90'	13.21'	23.97'	○ FL
5	328° 44' 21"	22.50'	6.31'	12.30'	○ FL
6	289° 59' 30"	15.00'	15.00'	23.56'	○ FL
7	289° 59' 30"	15.00'	15.00'	23.56'	○ FL



DMJMHN

CITY OF ALBUQUERQUE
PUBLIC WORKS DEPARTMENT
ENGINEERING DEVELOPMENT GROUP
TITLE: ALAMOSA NEIGHBORHOOD - TOWNSEND AVENUE, S.W.
PAVING PLAN AND PROFILE

NO.	DATE	REVISIONS	BY
DESIGNED BY:	M.T.	DATE:	MARCH 2006
DRAWN BY:	J.L.M.	DATE:	MARCH 2006
CHECKED BY:	D.J.L.	DATE:	MARCH 2006

SURVEY INFORMATION

NO.	BY	DATE

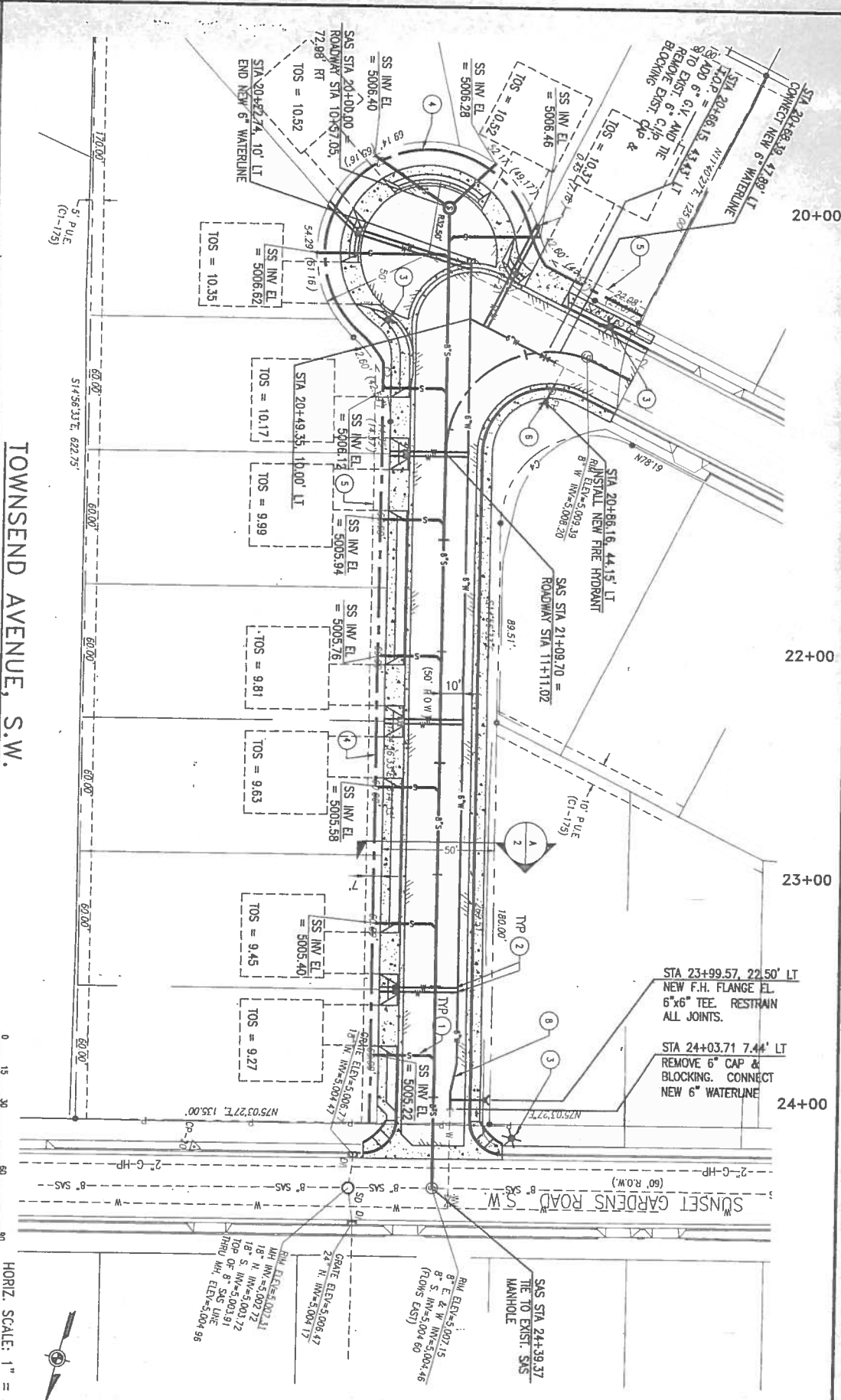
BENCH MARKS

NO.	DESCRIPTION
1	ACS NMHC ALUMINUM CAP STAMPED 2-L10, 1989' LOCATED IN THE SOUTHEAST QUADRANT OF THE INTERSECTION OF COORBS BLVD. AND BRIDGE BLVD. THE CAP IS ON THE NORTHWEST NOBE OF THE TRAFFIC ISLAND. ELEVATION = 5033.25 NGVD 29

AS BUILT INFORMATION

CONTRACTOR	DATE

City of Albuquerque
City Engineer
City Project No. 6767.08
Zone K-11
Map No. 5
Sheet 5 of 6



LENGTH OF RESTRAINED WATER PIPE

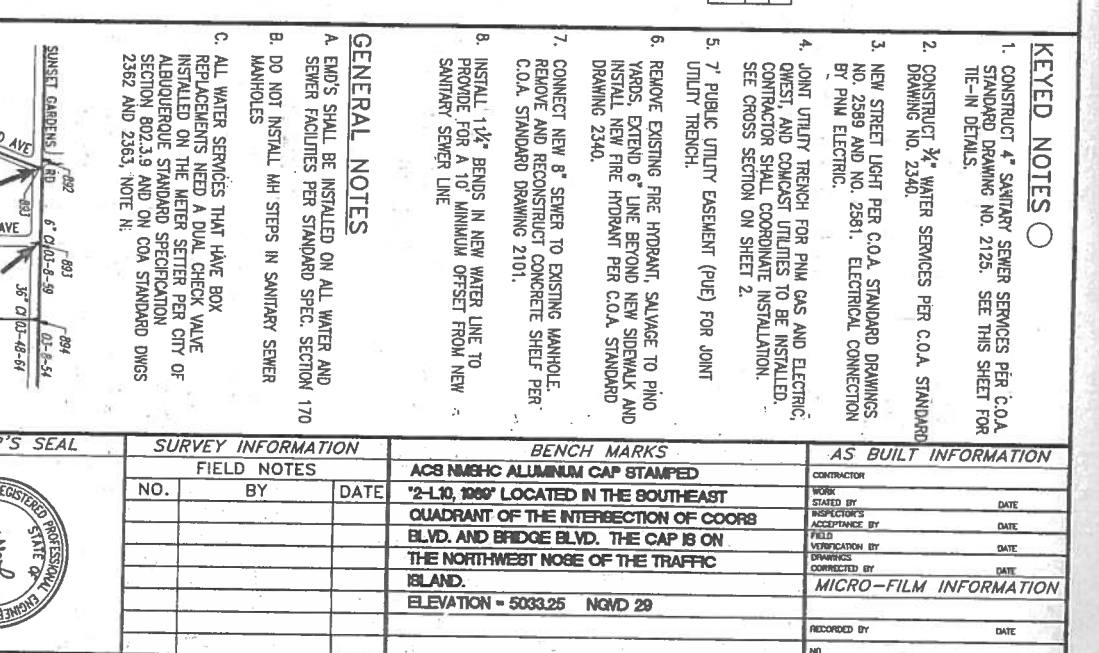
DIAM. (IN.)	LENGTH	TEE VALVE
6"	31'	13'
6"	6'	3'
6"	30'	74'

WATER SERVICE STUB-OUTS

NO.	STATION	NO.	STATION
1	19+97.94, 53.64' RT	6	21+39.82, 27.00' RT
2	19+90.28, 20.30' LT	7	22+00.85, 27.00' RT
3	19+99.74, 54.51' RT	8	22+29.30, 25.00' RT
4	20+08.69, 38.89' LT	9	22+31.30, 25.00' RT
5	20+09.57, 39.67' LT	10	23+49.30, 25.00' RT
6	21+09.30, 25.00' RT	11	23+51.30, 25.00' RT
7	21+09.30, 25.00' RT	12	23+79.76, 27.00' RT

SEWER SERVICE STUB-OUTS

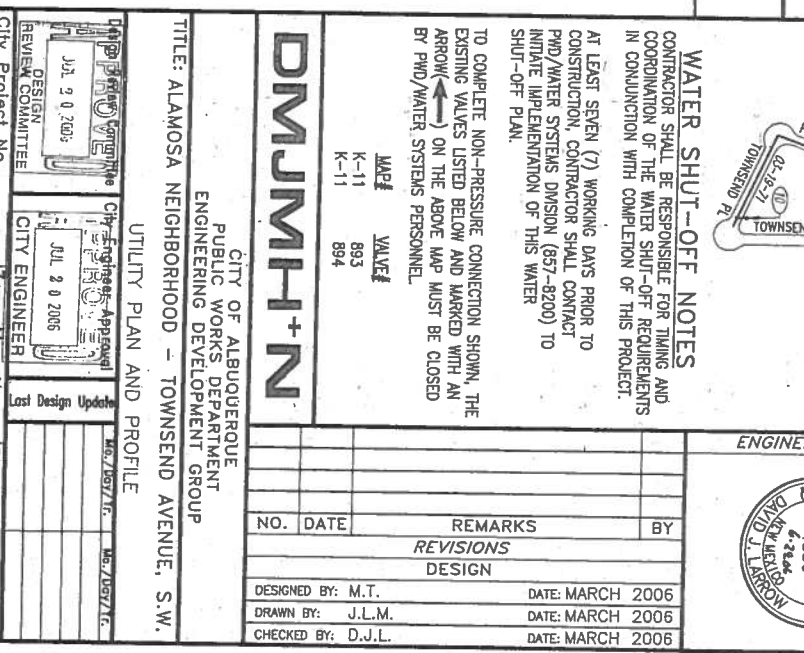
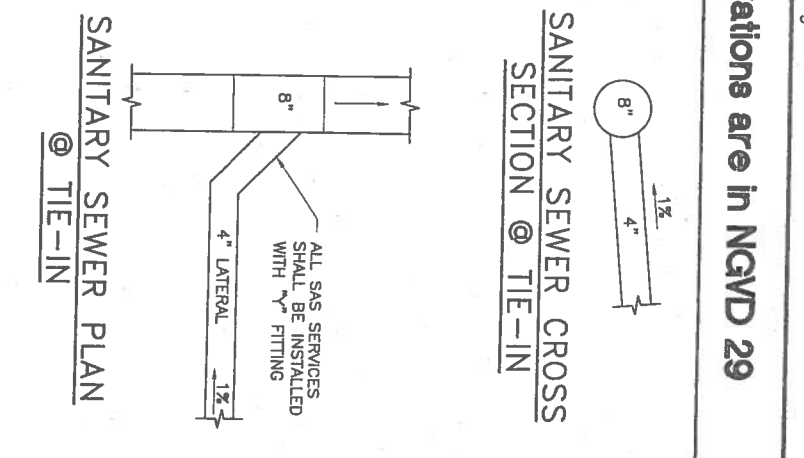
NO.	STATION	NO.	STATION
1	19+77.24, 33.34' RT	6	21+39.82, 27.00' RT
2	19+90.28, 20.30' LT	7	22+00.85, 27.00' RT
3	20+12.98, 40.53' LT	8	22+59.82, 27.00' RT
4	20+20.74, 59.11' RT	9	23+20.85, 27.00' RT
5	20+80.85, 27.00' RT	10	23+79.76, 27.00' RT



Horizontal Scale: 1" = 30'
Vertical Scale: 1" = 5'

Elevations are in NGVD 29

Station	Manhole	Notes
20+00.00	INSTALL NEW 4" MANHOLE	RIM ELEV. = 5009.13 TOP ELEV. = 5006.59 INV. (N) = 5005.92 INV. (SW) = 5006.02 INV. (SE) = 5006.02
24+39.37	EXIST. SAS MANHOLE	RIM ELEV. = 5007.15 TOP ELEV. = 5004.46 INV. (S) = 5004.60



Sanitary Sewer Cross Section @ TIE-IN
Sanitary Sewer Plan @ TIE-IN

- KEYED NOTES
- CONSTRUCT 4" SANITARY SEWER SERVICES PER C.O.A. STANDARD DRAWING NO. 2125. SEE THIS SHEET FOR TIE-IN DETAILS.
 - CONSTRUCT 1/2" WATER SERVICES PER C.O.A. STANDARD DRAWING NO. 2340.
 - NEW STREET LIGHT PER C.O.A. STANDARD DRAWINGS NO. 2589 AND NO. 2581. ELECTRICAL CONNECTION BY P.M. ELECTRIC.
 - JOINT UTILITY TRENCH FOR P.M. GAS AND ELECTRIC, DUESI, AND COMCAST UTILITIES TO BE INSTALLED. CONTRACTOR SHALL COORDINATE INSTALLATION. SEE CROSS SECTION ON SHEET 2.
 - PUBLIC UTILITY EASEMENT (PUE) FOR JOINT UTILITY TRENCH.
 - REMOVE EXISTING FIRE HYDRANT, SALVAGE TO POND YARDS. EXTEND 6" LINE BEYOND NEW SIDEWALK AND INSTALL NEW FIRE HYDRANT PER C.O.A. STANDARD DRAWING 2340.
 - CONNECT NEW 8" SEWER TO EXISTING MANHOLE. REMOVE AND RECONSTRUCT CONCRETE SHELL PER C.O.A. STANDARD DRAWING 2101.
 - INSTALL 1 1/2" BENDS IN NEW WATER LINE TO PROVIDE FOR A 10" MINIMUM OFFSET FROM NEW SANITARY SEWER LINE.

- GENERAL NOTES
- ENDS SHALL BE INSTALLED ON ALL WATER AND SEWER FACILITIES PER STANDARD SPEC. SECTION 170
 - DO NOT INSTALL MH STEPS IN SANITARY SEWER MANHOLES
 - ALL WATER SERVICES THAT HAVE BOX REPLACEMENTS NEED A DUAL CHECK VALVE INSTALLED ON THE METER SETTER PER CITY OF ALBUQUERQUE STANDARD SPECIFICATION SECTION 802.3.9 AND ON C.O.A. STANDARD DMS 2362 AND 2363. NOTE N1.

WATER SHUT-OFF NOTES

CONTRACTOR SHALL BE RESPONSIBLE FOR TIMING AND COORDINATION OF THE WATER SHUT-OFF REQUIREMENTS IN CONJUNCTION WITH COMPLETION OF THIS PROJECT.

AT LEAST SEVEN (7) WORKING DAYS PRIOR TO CONSTRUCTION, CONTRACTOR SHALL CONTACT P.M./WATER SYSTEMS DIVISION (857-8200) TO INITIATE IMPLEMENTATION OF THIS WATER SHUT-OFF PLAN.

TO COMPLETE NON-PRESSURE CONNECTION SHOWN, THE EXISTING VALVES LISTED BELOW AND MARKED WITH AN ARROW (→) ON THE ABOVE MAP MUST BE CLOSED BY P.M./WATER SYSTEMS PERSONNEL.

MWF VALVE
 K-11 893
 K-11 894

ENGINEER'S SEAL

REGISTERED PROFESSIONAL ENGINEER
 STATE OF NEW MEXICO
 NO. 2436
 DANIEL J. LARSON

SURVEY INFORMATION

NO.	BY	DATE

BENCH MARKS

ACS NMHC ALUMINUM CAP STAMPED
 2-L10, 1989 LOCATED IN THE SOUTHEAST QUADRANT OF THE INTERSECTION OF COOR BLVD. AND BRIDGE BLVD. THE CAP IS ON THE NORTH-WEST NOSE OF THE TRAFFIC ISLAND.
 ELEVATION = 5033.25 NGVD 29

AS BUILT INFORMATION

CONTRACTOR	DATE

MICRO-FILM INFORMATION

RECORDED BY	DATE

CITY OF ALBUQUERQUE
 PUBLIC WORKS DEPARTMENT
 ENGINEERING DEVELOPMENT GROUP

TITLE: ALAMOSA NEIGHBORHOOD - TOWNSEND AVENUE, S.W.
 UTILITY PLAN AND PROFILE

DESIGNED BY: M.T. DATE: MARCH 2006
 DRAWN BY: J.L.M. DATE: MARCH 2006
 CHECKED BY: D.J.L. DATE: MARCH 2006

NO. DATE REMARKS BY

REVISIONS DESIGN

DESIGN APPROVAL: [Signature]

CITY ENGINEER: [Signature]

City Project No. 6767.08 Zone Map No. K-11

Sheet 6 of 6