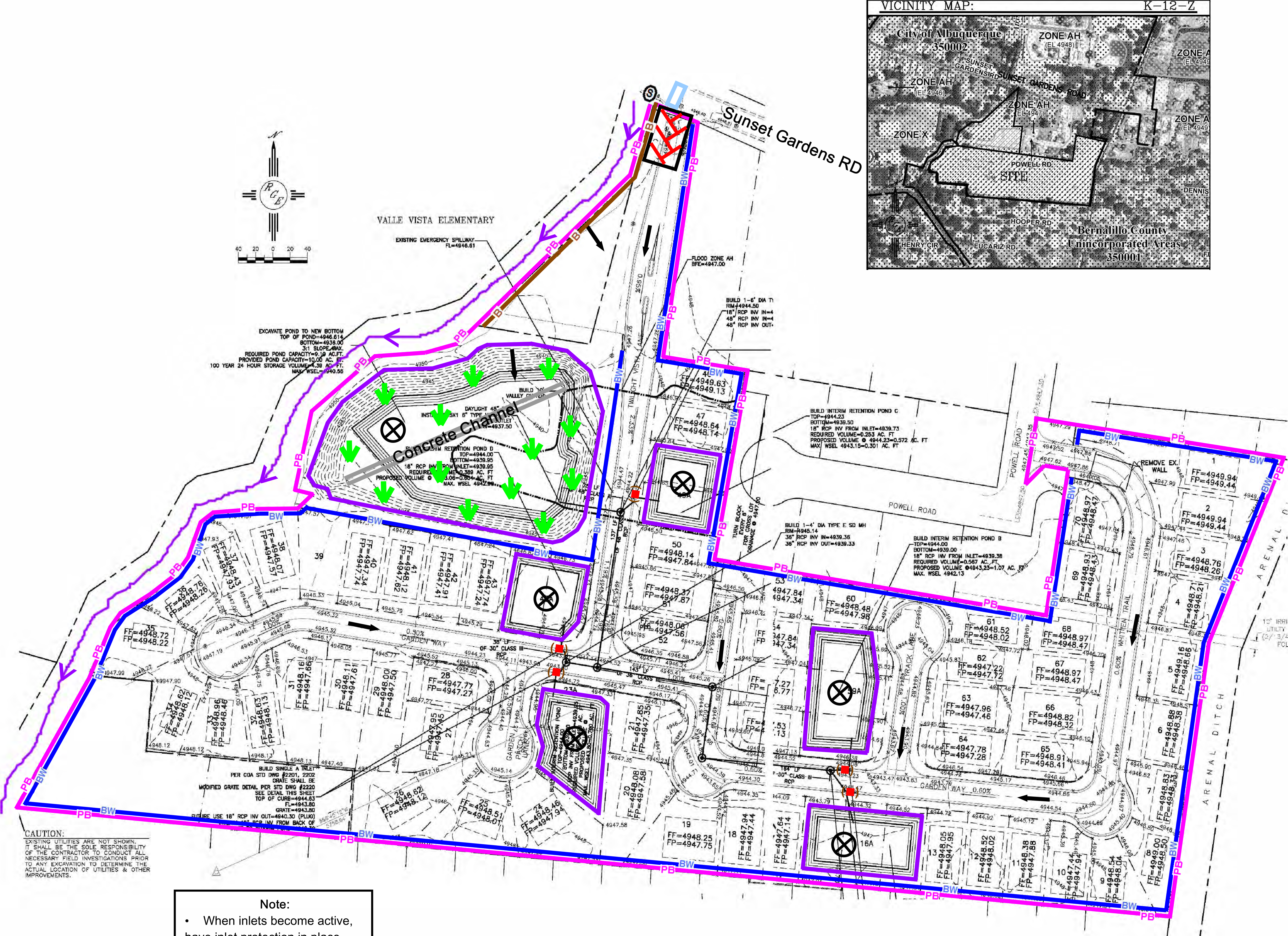


Engineer Stamp



Note:

- When inlets become active, have inlet protection in place.
- When doing work in the City ROW (sidewalk, storm drain, drive pads) avoid dirt from getting into the street. If dirt is present in the street, the street should be swept every few days or the same day if rain is imminent.

Legend

Erosion Sediment Control Plan

- PB** Project Perimeter & Disturbed Area
- Pre Flow & Post Flow
- ⊗** Outfall
- Ⓢ** Posting Sign
- ↓** Preserved Vegetation
- ⊞** Stabilized Construction Entrance
- Pond
- (PSI)** Proposed Storm Inlet (use wattles once operational)
- B** Earth Berm
- BW** Block Wall (existing)
- ~~~~~** Irrigation Ditch
- ▭** Section to connect water line: Place dirt on the uphill side of hte street cut and sweep the area after the work is complete.
- To Be Determined**
 - Trash Receptacle
 - Chemical Toilet
 - ▨** Concrete Washout
 - ▨** Staging Area

Sunset Villa Subdivision

Receiving Waters and Critical Habitat: Rio Grande located 0.6 miles to the East.

Impairments: E. coli, Dissolved Oxygen, PCBs in Fish Tissue, Water Temperature

Grade: Before and After 0.5% to 2.33%