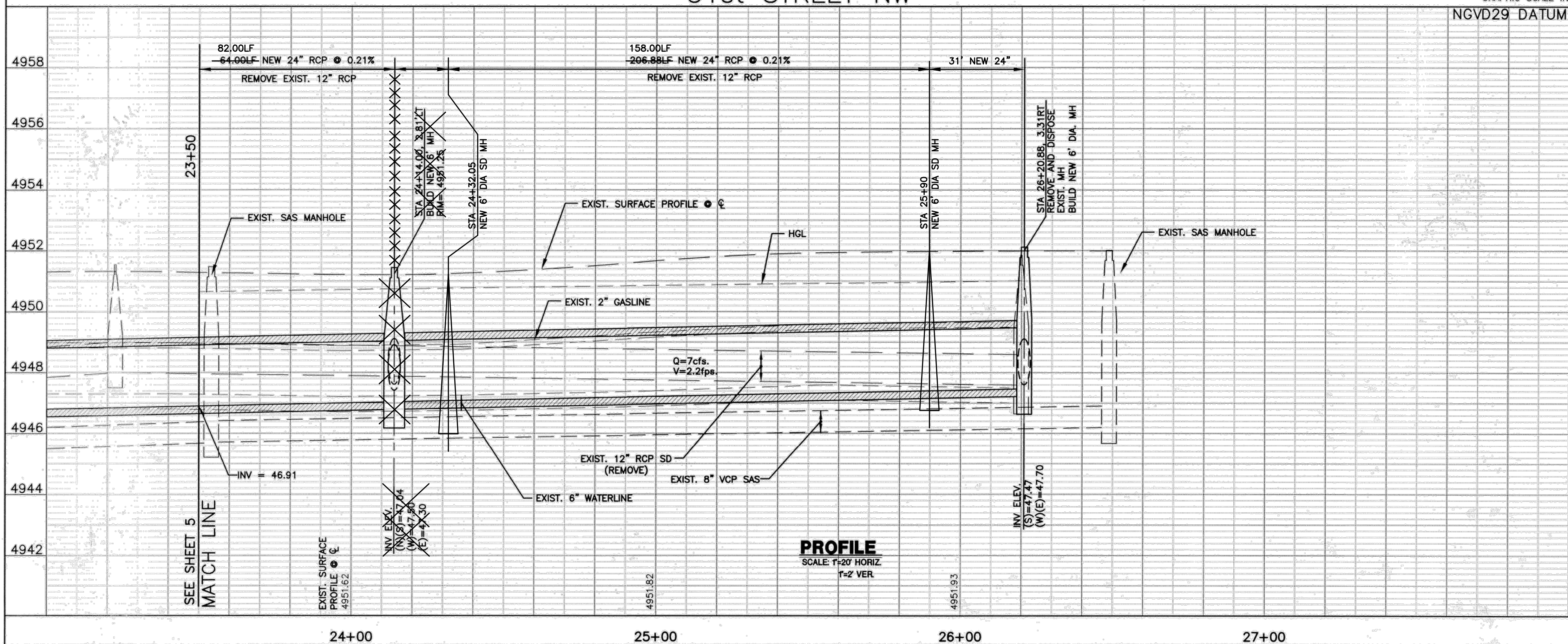
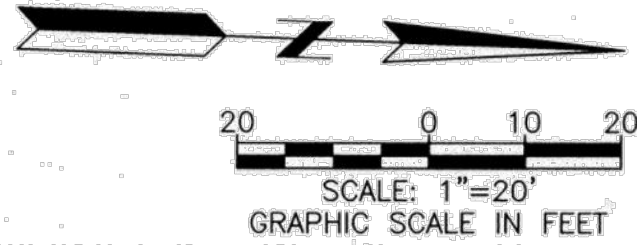


PLAN
SCALE: 1"=20'

51st STREET NW



PROFILE
SCALE: 1"=20' HORIZ
1"=2' VER.

KEYED NOTES

- ① 8" VCP SERVICE TO VCP MAIN REPAIR PER DETAIL SHEET 11.
- Ⓐ SAS SERVICE SEE DETAIL Ⓐ

POTHOLE INFORMATION

POTHOLE # (PH)	TYPE & MATERIAL	GROUND ELEV.	DEPTH TO TOP OF PIPE
18	WATER/METALIC	4951.16	46"
19	GAS/METALIC	4951.76	28"
20	GAS/METALIC	4951.97	35"
21	GAS/METALIC	4952.20	33"
22	STORM/CONCRETE	4952.27	26"
23	SAS/CONCRETE	4952.09	58"
24	WATER/PVC	4951.91	52"
25A	SAS/CONCRETE	4952.32	62"
25B	STORM/CONCRETE	4952.40	29"
26	SAS/CONCRETE	4951.55	63"

* PIPE SIZES & TYPES ARE BEST ESTIMATE TO BE CONFIRMED BY CONTRACTOR.

NOTES

- A. ANY WATER SERVICE LINES THAT NEED TO BE REPLACED SHALL BE REPLACED WITH COPPER TUBING AND NO SPLICES FROM METER TO MAIN. AS PER COA STD DWG. 2362
- B. ANY EXISTING UTILITIES EXPOSED DURING CONSTRUCTION SHALL BE SUPPORTED AND PROTECTED DURING CONSTRUCTION. THIS SUPPORT AND PROTECTION SHALL BE CONSIDERED INCIDENTAL TO PROJECT CONSTRUCTION AND NO SEPARATE PAYMENT WILL BE MADE.
- C. THE DISTURBANCE OF ANY EXISTING WHEELCHAIR RAMP DURING CONSTRUCTION WILL REQUIRE THE REPLACEMENT OF THE ENTIRE WHEELCHAIR RAMP. AS PER COA STD DWG 2441, CASE I, OR CASE II WITH HEADER CURB.
- D. RESIDENTIAL PAVEMENT WILL BE REPLACED AS PER COA STD DWG 2465 (RESIDENTIAL).
- E. CURB AND GUTTER WILL BE REPLACED AS PER COA STD DWG 2451A.
- F. STORM DRAIN INLETS WILL BE AS PER COA STD DWG 2201. WITH GRATES AS PER COA STD DWG 2220.
- G. ALL PAVEMENT CUTS TO BE MADE PERPENDICULAR TO TRAFFIC FLOW. PAVEMENT CUTS AT A CURB RADIUS WILL BE MADE RADIAL TO THE CURB.
- H. SIDEWALKS WILL BE REPLACED AS PER COA STD DWG 2430.
- I. DISTURBED DRIVEPADS WILL BE REPLACED AS PER COA STD DWG 2425.
- J. ALL RCP SHALL BE CLASS IV UNLESS OTHERWISE NOTED.

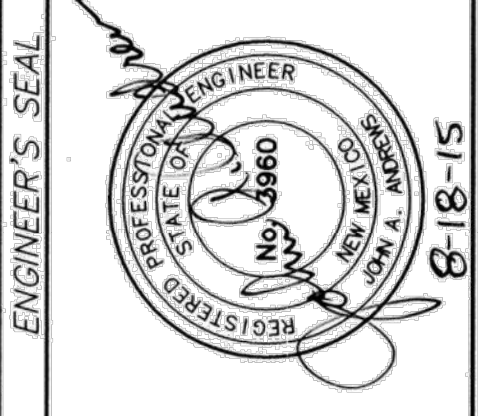
RECORD DRAWING
APRIL 2017



CITY OF ALBUQUERQUE
DEPARTMENT OF MUNICIPAL DEVELOPMENT
ENGINEERING DIVISION

TITLE: CENTRAL-ATRISCO DRAINAGE IMPROVEMENTS PHASE III
PLAN AND PROFILE 51st STREET
STA 23+50 TO 26+50

Design Review Committee	City Engineer Approval	Mo./Day/Yr.	Mo./Day/Yr.
APPROVED AUG 1 2015	APPROVED AUG 20 2015		
Project No. 6749.04	Zone Map No. K-11,J-11	Sheet 6	of 14



REVISIONS		NO.	DATE	REMARKS	BY
4	3	2	1		
DESIGNED BY: JAA DATE: AUG. 2015					
DRAWN BY: CAI/L DATE: AUG. 2015					
CHECKED BY: JAA DATE: AUG. 2015					

SURVEY INFORMATION			BENCH MARKS		AS BUILT INFORMATION			
NO.	BY	DATE			CONTRACTOR			
			ALBUQ. CONTROL SURVEY STATION "NM-448-C1"		WORK STAGED BY	DATE		
			STATION IS LOCATED IN MEDIAN OF CENTRAL AVE. WEST OF 59th STREET. THE STATION IS A NMSHC BRASS DISC SET FLUSH IN THE TOP OF A CONC. POST AND IS STAMPED "NM448-C1"		INSPECTOR'S ACCEPTANCE BY	DATE		
			NEW MEXICO STATE PLANE COORD. CENTRAL ZONE		VERIFICATION BY	DATE		
			X=364,764.30, Y=1485275.17, (NAD 27)		DRAWINGS CHECKED BY	DATE		
			ELEVATION= 5074.028 (NGVD 29)		RECORDED BY	DATE		
			PROJECT G-6 FACTOR: 0.999981630		RECORDED BY	DATE		

PROJECT G-G FACTOR: 0.999651530