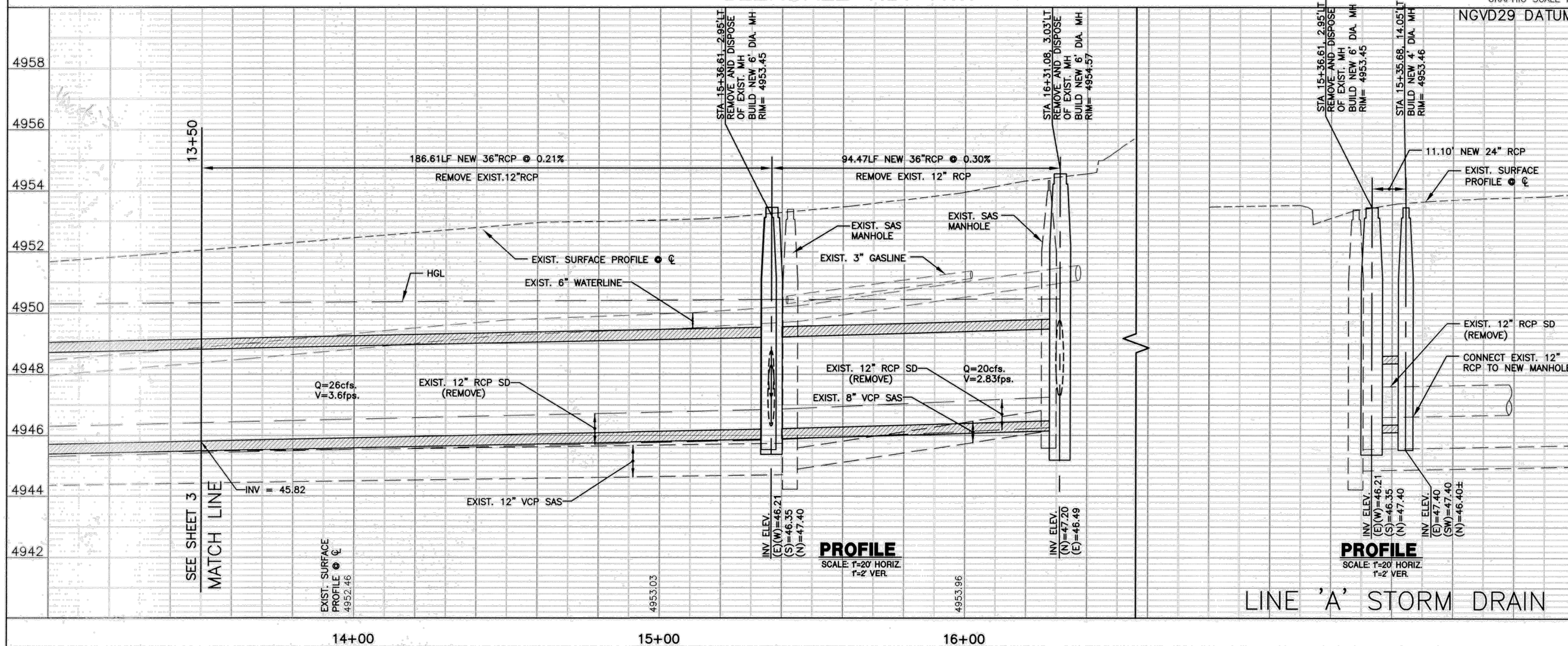


PLAN
SCALE: 1"=20'
GLENDALE RD. NW.

SEE SHEET 7
FOR CONTINUATION



PROFILE
SCALE: 1"=20' HORIZ
1"=2' VER.

PROFILE
SCALE: 1"=20' HORIZ
1"=2' VER.

LINE 'A' STORM DRAIN

POTHOLE INFORMATION			
POTHOLE # (PH)	TYPE & MATERIAL	GROUND ELEV.	DEPTH TO TOP OF PIPE
11	WATER/PVC	4953.37	38"
12	SAS/CONCRETE	4953.74	96"
13	GAS/HDPE	4953.78	36"
14	NO LOCATE&N/A	4953.88	120"
15	WATER/CEMENT	4954.72	39"

* PIPE SIZES & TYPES ARE BEST ESTIMATE TO BE CONFIRMED BY CONTRACTOR.

NOTES

- A. ANY WATER SERVICE LINES THAT NEED TO BE REPLACED SHALL BE REPLACED WITH COPPER TUBING AND NO SPLICES FROM METER TO MAIN. AS PER COA STD DWG. 2362
- B. ANY EXISTING UTILITIES EXPOSED DURING CONSTRUCTION SHALL BE SUPPORTED AND PROTECTED DURING CONSTRUCTION. THIS SUPPORT AND PROTECTION SHALL BE CONSIDERED INCIDENTAL TO PROJECT CONSTRUCTION AND NO SEPARATE PAYMENT WILL BE MADE.
- C. THE DISTURBANCE OF ANY EXISTING WHEELCHAIR RAMP DURING CONSTRUCTION WILL REQUIRE THE REPLACEMENT OF THE ENTIRE WHEELCHAIR RAMP. AS PER COA STD DWG 2441. CASE I, OR CASE II WITH HEADER CURB.
- D. RESIDENTIAL PAVEMENT WILL BE REPLACED AS PER COA STD DWG 2465 (RESIDENTIAL).
- E. CURB AND GUTTER WILL BE REPLACED AS PER COA STD DWG 2451A.
- F. STORM DRAIN INLETS WILL BE AS PER COA STD DWG 2201, WITH GRATES AS PER COA STD DWG 2220.
- G. ALL PAVEMENT CUTS TO BE MADE PERPENDICULAR TO TRAFFIC FLOW. PAVEMENT CUTS AT A CURB RADIUS WILL BE MADE RADIAL TO THE CURB.
- H. SIDEWALKS WILL BE REPLACED AS PER COA STD DWG 2430.
- I. DISTURBED DRIVEPADS WILL BE REPLACED AS PER COA STD DWG 2425.
- J. ALL RCP SHALL BE CLASS IV UNLESS OTHERWISE NOTED.

THIS DRAWING SUPERCEDED BY SHEET 4.1

RECORD DRAWING
APRIL 2017

LARKIN GROUP, INC.
8500 MENAUL NE, SUITE A-440
ALBUQUERQUE, NEW MEXICO 87112
(505) 275-7500, FAX (505) 275-0748
REGISTERED PROFESSIONAL ENGINEER
NEW MEXICO
NO. 3960
JAA

CITY OF ALBUQUERQUE
DEPARTMENT OF MUNICIPAL DEVELOPMENT
ENGINEERING DIVISION

TITLE: **CENTRAL-ATRISCO DRAINAGE IMPROVEMENTS PHASE III**
GLENDALE ROAD
STA 13+50 TO 16+75

Design Review Committee	City Engineer Approval	Mo./Day/Yr.	Mo./Day/Yr.
APPROVED	APPROVED		

Project No. **6749.04** Zone Map No. **K-11J** Sheet **4** of **14**

AS BUILT INFORMATION			
CONTRACTOR	WORKS BY	DATE	DATE
ALBUQ. CONTROL SURVEY STATION "NM_448-C1"	INSPECTED BY	DATE	DATE
STATION IS LOCATED IN MEDIAN OF CENTRAL AVE. WEST OF 59th STREET. THE STATION IS A NWSHC BRASS DISC SET FLUSH IN THE TOP OF A CONC. POST AND IS STAMPED "NM448-C1"	ACCEPTANCE BY	DATE	DATE
NEW MEXICO STATE PLANE COORD. CENTRAL ZONE X=364,764.30, Y=1485275.17, (NAD 27)	REVISIONS	DATE	DATE
ELEVATION= 5074.028 (NGVD 29)	RECORDED BY	DATE	DATE
PROJECT G-G FACTOR: 0.99961630	RECORDED BY	DATE	DATE

SURVEY INFORMATION			
FIELD NOTES	DATE	BY	DATE
NO.			
ENGINEER'S SEAL			
REVISIONS			
NO.	DATE	REMARKS	BY
1			
2			
3			
4			
DESIGNED BY: JAA	DATE: AUG. 2015		
DRAWN BY: CAI/L	DATE: AUG. 2015		
CHECKED BY: JAA	DATE: AUG. 2015		