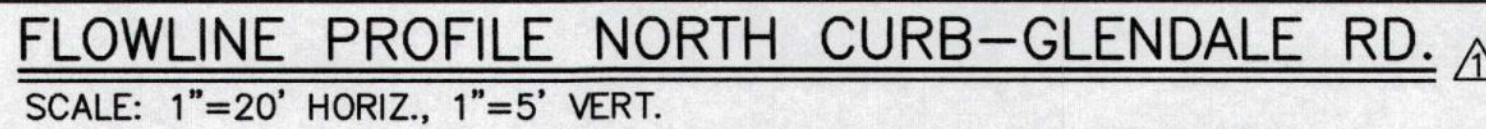
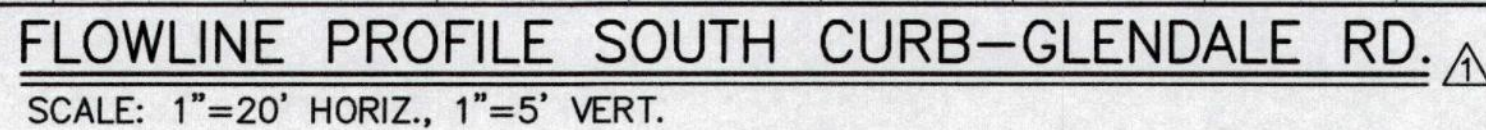
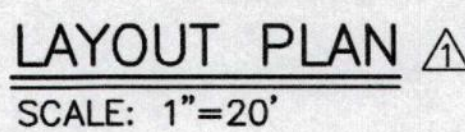


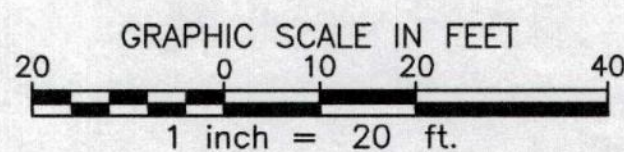
GLENDAL RD. NW. @ ARENAL CANAL CROSSING



- ## NOTES
- A. ANY WATER SERVICE LINES THAT NEED TO BE REPLACED SHALL BE REPLACED WITH COPPER TUBING AND NO SPLICES FROM METER TO MAIN. AS PER COA STD DWG. 2362
- B. ANY EXISTING UTILITIES EXPOSED DURING CONSTRUCTION SHALL BE SUPPORTED AND PROTECTED DURING CONSTRUCTION. THIS SUPPORT AND PROTECTION SHALL BE CONSIDERED INCIDENTAL TO PROJECT CONSTRUCTION AND NO SEPARATE PAYMENT WILL BE MADE.
- C. THE DISTURBANCE OF ANY EXISTING WHEELCHAIR RAMP DURING CONSTRUCTION WILL REQUIRE THE REPLACEMENT OF THE ENTIRE WHEELCHAIR RAMP. AS PER COA STD DWG 2441. CASE I, OR CASE II WITH HEADER CURB.
- D. RESIDENTIAL PAVEMENT WILL BE REPLACED AS PER COA STD DWG 2465 (RESIDENTIAL).
- E. CURB AND GUTTER WILL BE REPLACED AS PER COA STD DWG 2451A.
- F. STORM DRAIN INLETS WILL BE AS PER COA STD DWG 2201. WITH GRATES AS PER COA STD DWG 2220.
- G. ALL PAVEMENT CUTS TO BE MADE PERPENDICULAR TO TRAFFIC FLOW. PAVEMENT CUTS AT A CURB RADIUS WILL BE MADE RADIAL TO THE CURB.
- H. SIDEWALKS WILL BE REPLACED AS PER COA STD DWG 2430.
- I. DISTURBED DRIVEPADS WILL BE REPLACED AS PER COA STD DWG 2425.
- J. ALL RCP SHALL BE CLASS IV UNLESS OTHERWISE NOTED.


RECORD DRAWINGS WERE PREPARED
FROM INFORMATION PROVIDED BY
THE CONTRACTOR

RECORD DRAWING
APRIL 2017



NOTE:
OBSERVE NORTH ORIENTATION IN PLAN VIEWS



	ENGINEER'S FILE NO. <u>100-15457-175</u> CITY OF ALBUQUERQUE DEPARTMENT OF MUNICIPAL DEVELOPMENT ENGINEERING DIVISION
	TITLE: <u>CENTRAL-ATRISCO DRAINAGE</u> <u>IMPROVEMENTS PHASE III</u> <u>REMOVAL PLAN AND PLAN & PROFILE</u> <u>GLENDALE RD. NW. @ ARENAL CANAL CROSSING</u>

Design Review Committee	City Engineer Approval	Last Design Update	Mo./Day/Yr.	Mo./Day/Yr.
Project No.	Zone Map No.	Sheet	of	
6749.04	K-11,J-11	8		14