

CITY OF ALBUQUERQUE

Planning Department
Alan Varela, Director



Mayor Timothy M. Keller

September 14, 2023

David Soule, P.E.
Rio Grande Engineering
P.O. Box 93924
Albuquerque, NM 87199

RE: 1105 Silver Ave. SW
Permanent C.O. – Accepted
Engineer's Certification Date: 09/01/23
Engineer's Stamp Date: 04/19/21
Hydrology File: K13D079

Dear Mr. Soule:

PO Box 1293

Based on the Certification received 09/01/2023 and site visit on 09/08/2023, this letter serves as a "green tag" from Hydrology Section for a Permanent Certificate of Occupancy to be issued by the Building and Safety Division.

Albuquerque

If you have any questions, please contact me at 924-3995 or rbrissette@cabq.gov.

NM 87103

Sincerely,

Renée C. Brissette

www.cabq.gov

Renée C. Brissette, P.E. CFM
Senior Engineer, Hydrology
Planning Department



City of Albuquerque

Planning Department
Development & Building Services Division

DRAINAGE AND TRANSPORTATION INFORMATION SHEET (REV 6/2018)

Project Title: 1105 SILVER SW **Building Permit #:** _____ **Hydrology File #:** _____
DRB#: _____ **EPC#:** _____ **Work Order#:** _____
Legal Description: LOT 15-A, BLOCK 14 RAYNOLDS SUBDIVISION
City Address: 1105 SILVER SW

Applicant: _____ **Contact:** _____
Address: _____
Phone#: _____ **Fax#:** _____ **E-mail:** _____

Other Contact: RIO GRANDE ENGINEERING **Contact:** DAVID SOULE
Address: PO BOX 93924 ALB NM 87199
Phone#: 505.321.9099 **Fax#:** 505.872.0999 **E-mail:** david@riograndeengineering.com

TYPE OF DEVELOPMENT: _____ PLAT ☒ RESIDENCE _____ DRB SITE _____ ADMIN SITE

Check all that Apply:

DEPARTMENT:
☒ HYDROLOGY/ DRAINAGE
_____ TRAFFIC/ TRANSPORTATION

TYPE OF SUBMITTAL:
☒ ENGINEER/ARCHITECT CERTIFICATION
_____ PAD CERTIFICATION
_____ CONCEPTUAL G & D PLAN
_____ GRADING PLAN
_____ DRAINAGE REPORT
_____ DRAINAGE MASTER PLAN
_____ FLOODPLAIN DEVELOPMENT PERMIT APPLIC
_____ ELEVATION CERTIFICATE
_____ CLOMR/LOMR
_____ TRAFFIC CIRCULATION LAYOUT (TCL)
_____ TRAFFIC IMPACT STUDY (TIS)
_____ STREET LIGHT LAYOUT
_____ OTHER (SPECIFY) _____
_____ PRE-DESIGN MEETING?

IS THIS A RESUBMITTAL?: _____ Yes ☒ No

TYPE OF APPROVAL/ACCEPTANCE SOUGHT:

_____ BUILDING PERMIT APPROVAL
☒ CERTIFICATE OF OCCUPANCY
_____ PRELIMINARY PLAT APPROVAL
_____ SITE PLAN FOR SUB'D APPROVAL
_____ SITE PLAN FOR BLDG. PERMIT APPROVAL
_____ FINAL PLAT APPROVAL
_____ SIA/ RELEASE OF FINANCIAL GUARANTEE
_____ FOUNDATION PERMIT APPROVAL
_____ GRADING PERMIT APPROVAL
_____ SO-19 APPROVAL
_____ PAVING PERMIT APPROVAL
_____ GRADING/ PAD CERTIFICATION
_____ WORK ORDER APPROVAL
_____ CLOMR/LOMR
_____ FLOODPLAIN DEVELOPMENT PERMIT
_____ OTHER (SPECIFY) _____

DATE SUBMITTED: _____ **By:** _____

COA STAFF:

ELECTRONIC SUBMITTAL RECEIVED: _____

FEE PAID: _____

BASIN DATA

Basin	Area (sf)	Area (acres)	Treatment A % (acres)	Treatment B % (acres)	Treatment C % (acres)	Treatment D % (acres)	Q100 GENERATED	Q100 DISCHARGED				
EXISTING TO ALLEY	3525.00	0.081	0%	0	50%	0.040	50%	0.0405	0%	0.000	0.22	0.22
EXISTING TO SILVER	3485.00	0.080	0%	0	50%	0.040	50%	0.0401	0%	0.000	0.21	0.21
PROPOSED TO ALLEY	1059.00	0.024	0%	0	10%	0.002	85%	0.0207	5%	0.001	0.08	0.08
PROPOSED TO SILVER	5961.00	0.137	0%	0	10%	0.014	26%	0.0356	64%	0.088	0.52	0.28
TOTAL EXISTING												0.43
TOTAL PROPOSED												0.32

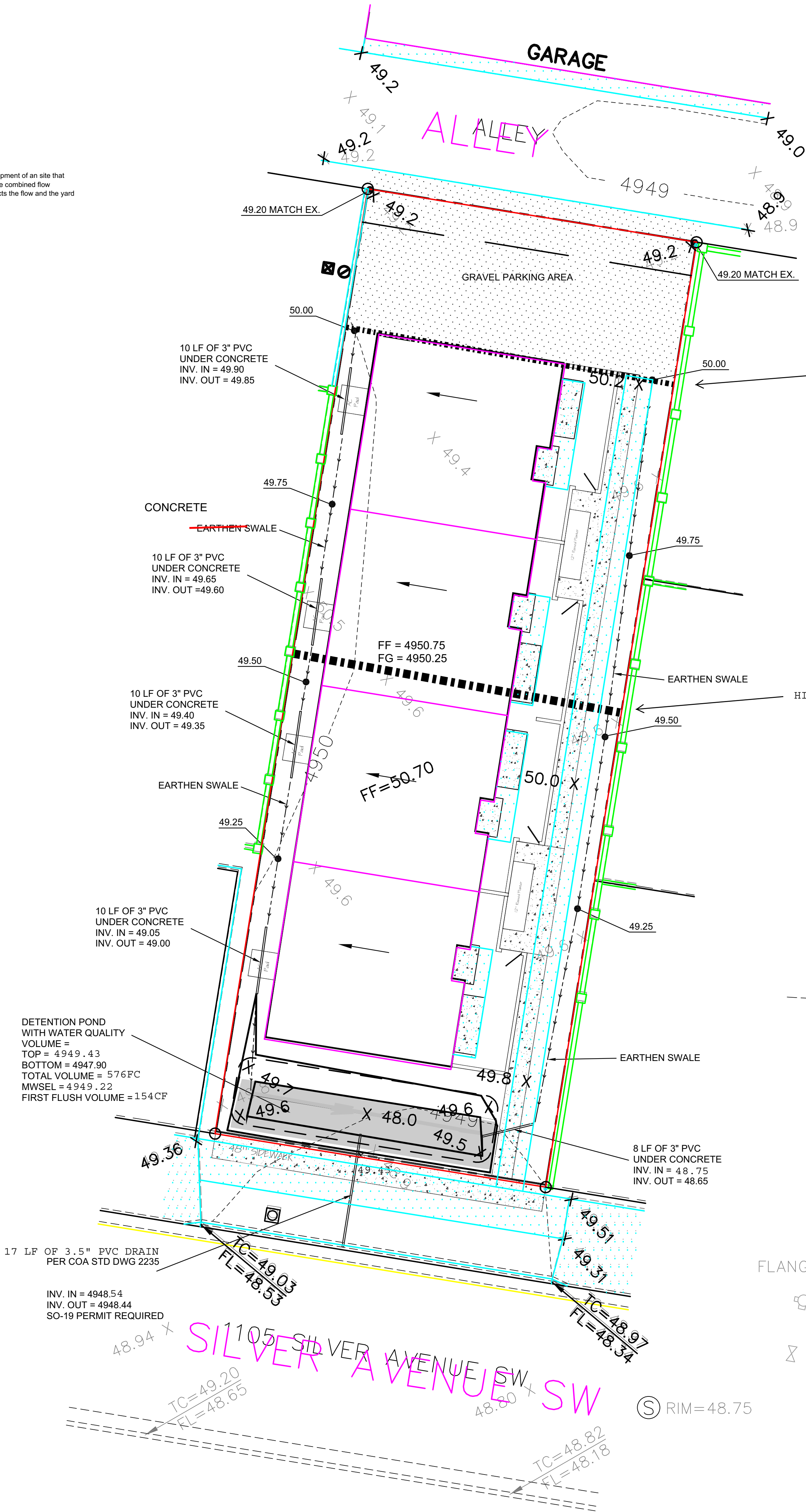
FIRST FLUSH/REDEVELOPMENT (0.48" PER SF IMP) 133,520 required 154,000 provided

* SITE DISCHARGE CALCULATED UTILIZING ARYMO. THE DETENTION POND HAS DIFFERENT T_p THEREFORE THE CUMULATIVE DISCHARGE IS SLIGHTLY LESS THAT THE SUMMATION OF EACH BASIN

Narrative
The subject property is located within a fully developed area of downtown Albuquerque. All down stream drainage improvements have been completed. This is a new development of an site that discharges 0.43 cfs of which 22 cfs drains to alley and 21 cfs drains to silver. The proposed improvements will free discharge 08 cfs to the alley and 26 cfs to the silver. The combined flow leaving the site is .11 cfs less than historic. The improved areas will pass thru a detention pond with a water quality volume below the outlet pipe. The outlet pipe size restricts the flow and the yard pond is sized to contain the water quality volume of 134 CF.

Private Drainage Facilities within City Right-of-Way
Notice to Contractor
(Special Order 19 ~ "SO-19")

- Build sidewalk culvert per COA STD DWG 2236.
- Contact Storm Drain Maintenance at (505) 857-8033 to schedule a meeting prior to forming.
- An excavation permit will be required before beginning any work within City Right-Of-Way.
- All work on this project shall be performed in accordance with applicable federal, state and local laws, rules and regulations concerning construction safety and health.
- Two working days prior to any excavation, the contractor must contact **New Mexico One Call, dial "811"** [or (505) 260-1990] for the location of existing utilities.
- Prior to construction, the contractor shall excavate and verify the locations of all obstructions. Should a conflict exist, the contractor shall notify the engineer so that the conflict can be resolved with a minimum amount of delay.
- Backfill compaction shall be according to traffic/street use.
- Maintenance of the facility shall be the responsibility of the owner of the property being served.
- Work on arterial streets may be required on a 24-hour basis.
- Contractor must contact Storm Drain Maintenance at (505) 857-8033 to schedule a construction inspection. For excavating and barricading inspections, contact Construction Coordination at (505) 924-3416.



EROSION CONTROL NOTES:

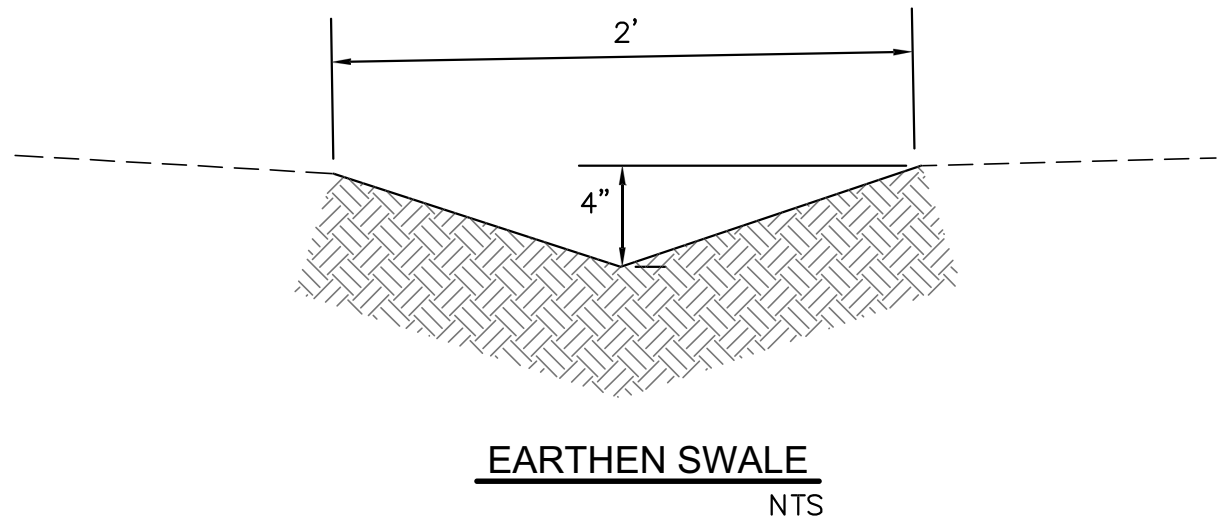
- CONTRACTOR IS RESPONSIBLE FOR OBTAINING A TOPSOIL DISTURBANCE PERMIT PRIOR TO BEGINNING WORK.
- CONTRACTOR IS RESPONSIBLE FOR MAINTAINING RUN-OFF ON SITE DURING CONSTRUCTION.
- CONTRACTOR IS RESPONSIBLE FOR CLEANING ALL SEDIMENT THAT GETS INTO EXISTING RIGHT-OF-WAY.
- REPAIR OF DAMAGED FACILITIES AND CLEANUP OF SEDIMENT ACCUMULATIONS ON ADJACENT PROPERTIES AND IN PUBLIC FACILITIES IS THE RESPONSIBILITY OF THE CONTRACTOR.
- ALL EXPOSED EARTH SURFACES MUST BE PROTECTED FROM WIND AND WATER EROSION PRIOR TO FINAL ACCEPTANCE OF ANY PROJECT.

I David Soule, NMPE 14522 , of the firm **Rio Grande Engineering**, hereby certify that this project has been graded and will drain in substantial compliance with and in accordance with the design intend of the approved plan dated 4/19/21. The record information edited on the original design document has performed by me or under my direct supervision and is true and correct to the best of my knowledge and belief. The as-built survey was provided by TIM ALDRICH NMPLS# 8901. The certification is submitted in support of a request for **PERMANENT CERTIFICATE OF OCCUPANCY**. The record information presented heron is not necessarily complete and intended only to verify substantial compliance of the grading and drainage aspects of this project. Those relying on this record document are advised to obtain independent verification of its accuracy before using it for any other purpose



9/1/23

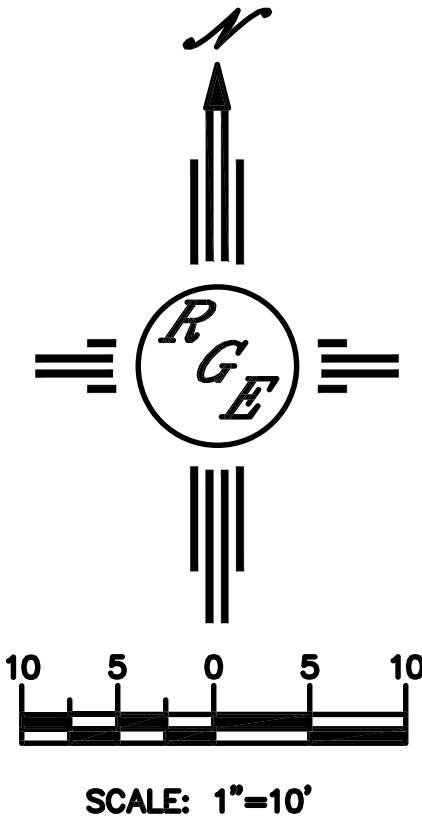
CONSTRUCT ALL SWALES AND EROSION PROTECTION (SHOWN HATCHED) BELOW ADJACENT GRADE TO ENSURE RUNOFF CAN BE CAPTURED AND CONVEYED PROPERLY.



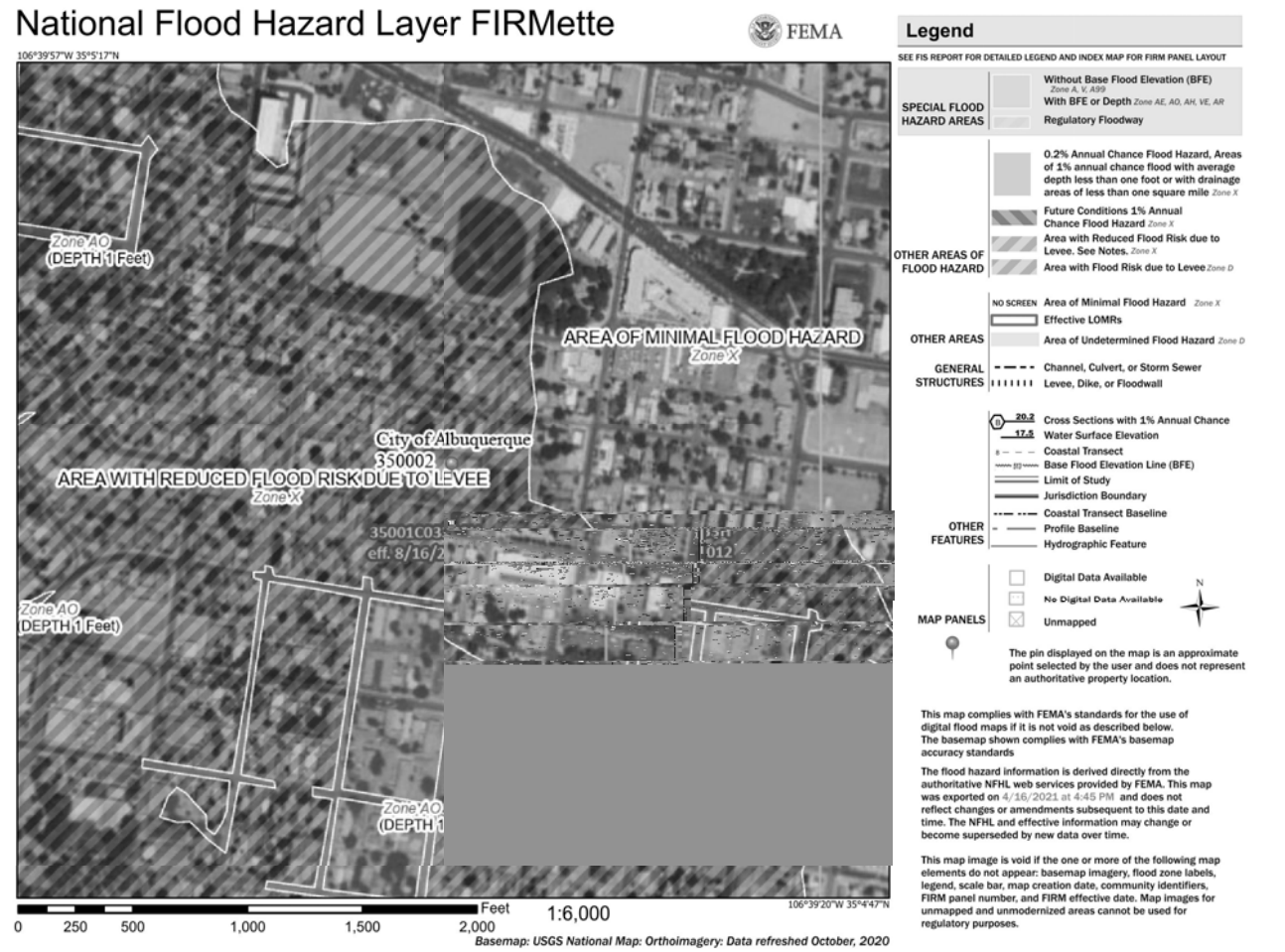
EARTHEN SWALE
NTS

FLANGE = 49.11

Ⓢ RIM = 48.75



VICINITY MAP: K-13-Z



FIRM MAP:

LEGAL DESCRIPTION:

LOT 15-A BLOCK 14 RAYNOLDS ADDITION
CITY OF ALBUQUERQUE, BERNALILLO COUNTY, NEW MEXICO

NOTES:

- ALL SPOT ELEVATIONS REPRESENT FLOWLINE ELEVATION UNLESS OTHERWISE NOTED.
- ALL SLOPES SHALL BE 3:1 MAX. AND GRAVEL OR NATIVE SEEDING PRIOR TO CO.
- ANY PERIMETER WALLS MUST BE PERMITTED SEPARATELY ALL RETAINING WALL DESIGN SHALL BE BY OTHERS.
- SURVEY INFORMATION PROVIDED BY COMMUNITY SCIENCES CORPORATION USING NAVD DATUM 1988.
- A PAD ELEVATION CERTIFICATION SHALL BE REQUIRED PRIOR TO RELEASE OF BUILDING PERMIT.

LEGEND

----	XXXX	---	EXISTING CONTOUR
----	XXXX	---	EXISTING INDEX CONTOUR
----	XXXX	---	PROPOSED CONTOUR
----	XXXX	---	PROPOSED INDEX CONTOUR
+	XXXX		EXISTING SPOT ELEVATION
●	XXXX		PROPOSED SPOT ELEVATION
----		----	BOUNDARY
----		----	ADJACENT BOUNDARY
=====		=====	EXISTING CURB AND GUTTER
----->		----->	PROPOSED EARTHEN SWALE
----->		----->	PROPOSED RETAINING WALL
----->		----->	PROPOSED GRAVEL
----->		----->	PROPOSED CONCRETE

CAUTION:

EXISTING UTILITIES ARE NOT SHOWN. IT SHALL BE THE SOLE RESPONSIBILITY OF THE CONTRACTOR TO CONDUCT ALL NECESSARY FIELD INVESTIGATIONS PRIOR TO ANY EXCAVATION TO DETERMINE THE ACTUAL LOCATION OF UTILITIES & OTHER IMPROVEMENTS.

ENGINEER'S SEAL	Lot 15-A Blk 14 Raynolds Addition 1105 SILVER AVE.	DRAWN BY DEM
DAVID SOULE NEW MEXICO 14522 REGISTERED PROFESSIONAL ENGINEER	GRADING AND DRAINAGE PLAN	DATE 4-17-21
4/19/21	Rio Grande Engineering P.O. BOX 53954 ALBUQUERQUE, NM 87199 (505) 321-9099	Job 15-A Blk 14 Raynolds Addition.dwg
DAVID SOULE P.E. #14522		SHEET # 1 of 2
		JOB #

POND STAGE-STORAGE

Office Equation						
C =	C - C.SORT(g2)					
Diameter (in)	Area (ft ²)	Depth of water above center of orifice	Flow			
3.5	0.004	32.2				
0.6	0.0004813385					
ACTUAL	DEPTH	AREA	VOLUME	PER UNIT	CUMULATIVE	VOLUME
49.43	0.89	620.00	238.44	576.675	0.013	0.30
49.00	0.46	489.00	184.00	154.24	0.004	0.23
48.54	0.00	0.00	0.00	0.00	0.004	0.00
47.50	0.00	0.00	0.00	0.00	0.000	0.00
ELEV.	DEPTH	AREA	VOLUME	PER UNIT	CUMULATIVE	VOLUME
32.2	0.066813185	0.066813185	0.0004811385	0.0004811385	0.0004811385	0.0004811385
Diameter (in)	Area (ft ²)	Depth of water above center of orifice	Flow			
3.5	0.004	32.2				
0.6	0.0004813385					

RAINFALL	START	TYPEZ	RAINFALL	TYPEZ	RAINFALL	TYPEZ	RAINFALL	TYPEZ	RAINFALL	TYPEZ	RAINFALL	TYPEZ	RAINFALL	TYPEZ	RAINFALL	TYPEZ	RAINFALL	TYPEZ	RAINFALL	TYPEZ	RAINFALL	TYPEZ	RAINFALL	TYPEZ	RAINFALL	TYPEZ	RAINFALL	TYPEZ	RAINFALL	TYPEZ	RAINFALL	TYPEZ	RAINFALL	TYPEZ	RAINFALL	TYPEZ	RAINFALL	TYPEZ	RAINFALL	TYPEZ	RAINFALL	TYPEZ	RAINFALL	TYPEZ	RAINFALL	TYPEZ	RAINFALL	TYPEZ	RAINFALL	TYPEZ	RAINFALL	TYPEZ	RAINFALL	TYPEZ	RAINFALL	TYPEZ	RAINFALL	TYPEZ	RAINFALL	TYPEZ	RAINFALL	TYPEZ	RAINFALL	TYPEZ	RAINFALL	TYPEZ	RAINFALL	TYPEZ	RAINFALL	TYPEZ	RAINFALL	TYPEZ	RAINFALL	TYPEZ	RAINFALL	TYPEZ	RAINFALL	TYPEZ	RAINFALL	TYPEZ	RAINFALL	TYPEZ	RAINFALL	TYPEZ	RAINFALL	TYPEZ	RAINFALL	TYPEZ	RAINFALL	TYPEZ	RAINFALL	TYPEZ	RAINFALL	TYPEZ	RAINFALL	TYPEZ	RAINFALL	TYPEZ	RAINFALL	TYPEZ	RAINFALL	TYPEZ	RAINFALL	TYPEZ	RAINFALL	TYPEZ	RAINFALL	TYPEZ	RAINFALL	TYPEZ	RAINFALL	TYPEZ	RAINFALL	TYPEZ	RAINFALL	TYPEZ	RAINFALL	TYPEZ	RAINFALL	TYPEZ	RAINFALL	TYPEZ	RAINFALL	TYPEZ	RAINFALL	TYPEZ	RAINFALL	TYPEZ	RAINFALL	TYPEZ	RAINFALL	TYPEZ	RAINFALL	TYPEZ	RAINFALL	TYPEZ	RAINFALL	TYPEZ	RAINFALL	TYPEZ	RAINFALL	TYPEZ	RAINFALL	TYPEZ	RAINFALL	TYPEZ	RAINFALL	TYPEZ	RAINFALL	TYPEZ	RAINFALL	TYPEZ	RAINFALL	TYPEZ	RAINFALL	TYPEZ	RAINFALL	TYPEZ	RAINFALL	TYPEZ	RAINFALL	TYPEZ	RAINFALL	TYPEZ	RAINFALL	TYPEZ	RAINFALL	TYPEZ	RAINFALL	TYPEZ	RAINFALL	TYPEZ	RAINFALL	TYPEZ	RAINFALL	TYPEZ	RAINFALL	TYPEZ	RAINFALL	TYPEZ	RAINFALL	TYPEZ	RAINFALL	TYPEZ	RAINFALL	TYPEZ	RAINFALL	TYPEZ	RAINFALL	TYPEZ	RAINFALL	TYPEZ	RAINFALL	TYPEZ	RAINFALL	TYPEZ	RAINFALL	TYPEZ	RAINFALL	TYPEZ	RAINFALL	TYPEZ	RAINFALL	TYPEZ	RAINFALL	TYPEZ	RAINFALL	TYPEZ	RAINFALL	TYPEZ	RAINFALL	TYPEZ	RAINFALL	TYPEZ	RAINFALL	TYPEZ	RAINFALL	TYPEZ	RAINFALL	TYPEZ	RAINFALL	TYPEZ	RAINFALL	TYPEZ	RAINFALL	TYPEZ	RAINFALL	TYPEZ	RAINFALL	TYPEZ	RAINFALL	TYPEZ	RAINFALL	TYPEZ	RAINFALL	TYPEZ	RAINFALL	TYPEZ	RAINFALL	TYPEZ	RAINFALL	TYPEZ	RAINFALL	TYPEZ	RAINFALL	TYPEZ	RAINFALL	TYPEZ	RAINFALL	TYPEZ	RAINFALL	TYPEZ	RAINFALL	TYPEZ	RAINFALL	TYPEZ	RAINFALL	TYPEZ	RAINFALL	TYPEZ	RAINFALL	TYPEZ	RAINFALL	TYPEZ	RAINFALL	TYPEZ	RAINFALL	TYPEZ	RAINFALL	TYPEZ	RAINFALL	TYPEZ	RAINFALL	TYPEZ	RAINFALL	TYPEZ	RAINFALL	TYPEZ	RAINFALL	TYPEZ	RAINFALL	TYPEZ	RAINFALL	TYPEZ	RAINFALL	TYPEZ	RAINFALL	TYPEZ	RAINFALL	TYPEZ	RAINFALL	TYPEZ	RAINFALL	TYPEZ	RAINFALL	TYPEZ	RAINFALL	TYPEZ	RAINFALL	TYPEZ	RAINFALL	TYPEZ	RAINFALL	TYPEZ	RAINFALL	TYPEZ	RAINFALL	TYPEZ	RAINFALL	TYPEZ	RAINFALL	TYPEZ	RAINFALL	TYPEZ	RAINFALL	TYPEZ	RAINFALL	TYPEZ	RAINFALL	TYPEZ	RAINFALL	TYPEZ	RAINFALL	TYPEZ	RAINFALL	TYPEZ	RAINFALL	TYPEZ	RAINFALL	TYPEZ	RAINFALL	TYPEZ	RAINFALL	TYPEZ	RAINFALL	TYPEZ	RAINFALL	TYPEZ	RAINFALL	TYPEZ	RAINFALL	TYPEZ	RAINFALL	TYPEZ	RAINFALL	TYPEZ	RAINFALL	TYPEZ	RAINFALL	TYPEZ	RAINFALL	TYPEZ	RAINFALL	TYPEZ	RAINFALL	TYPEZ	RAINFALL	TYPEZ	RAINFALL	TYPEZ	RAINFALL	TYPEZ	RAINFALL	TYPEZ	RAINFALL	TYPEZ	RAINFALL	TYPEZ	RAINFALL	TYPEZ	RAINFALL	TYPEZ	RAINFALL	TYPEZ	RAINFALL	TYPEZ	RAINFALL	TYPEZ	RAINFALL	TYPEZ	RAINFALL	TYPEZ	RAINFALL	TYPEZ	RAINFALL	TYPEZ	RAINFALL	TYPEZ	RAINFALL	TYPEZ	RAINFALL	TYPEZ	RAINFALL	TYPEZ	RAINFALL	TYPEZ	RAINFALL	TYPEZ	RAINFALL	TYPEZ	RAINFALL	TYPEZ	RAINFALL	TYPEZ	RAINFALL	TYPEZ	RAINFALL	TYPEZ	RAINFALL	TYPEZ	RAINFALL	TYPEZ	RAINFALL	TYPEZ	RAINFALL	TYPEZ	RAINFALL	TYPEZ	RAINFALL	TYPEZ	RAINFALL	TYPEZ	RAINFALL	TYPEZ	RAINFALL	TYPEZ	RAINFALL	TYPEZ	RAINFALL	TYPEZ	RAINFALL	TYPEZ	RAINFALL	TYPEZ	RAINFALL	TYPEZ	RAINFALL	TYPEZ	RAINFALL	TYPEZ	RAINFALL	TYPEZ	RAINFALL	TYPEZ	RAINFALL	TYPEZ	RAINFALL	TYPEZ	RAINFALL	TYPEZ	RAINFALL	TYPEZ	RAINFALL	TYPEZ	RAINFALL	TYPEZ	RAINFALL	TYPEZ	RAINFALL	TYPEZ	RAINFALL	TYPEZ	RAINFALL	TYPEZ	RAINFALL	TYPEZ	RAINFALL	TYPEZ	RAINFALL	TYPEZ	RAINFALL	TYPEZ	RAINFALL	TYPEZ	RAINFALL	TYPEZ	RAINFALL	TYPEZ	RAINFALL	TYPEZ	RAINFALL	TYPEZ	RAINFALL	TYPEZ	RAINFALL	TYPEZ	RAINFALL	TYPEZ	RAINFALL	TYPEZ	RAINFALL	TYPEZ	RAINFALL	TYPEZ	RAINFALL	TYPEZ	RAINFALL	TYPEZ	RAINFALL	TYPEZ	RAINFALL	TYPEZ	RAINFALL	TYPEZ	RAINFALL	TYPEZ	RAINFALL	TYPEZ	RAINFALL	TYPEZ	RAINFALL	TYPEZ	RAINFALL	TYPEZ	RAINFALL	TYPEZ	RAINFALL	TYPEZ	RAINFALL	TYPEZ	RAINFALL	TYPEZ	RAINFALL	TYPEZ	RAINFALL	TYPEZ	RAINFALL	TYPEZ	RAINFALL	TYPEZ	RAINFALL	TYPEZ	RAINFALL	TYPEZ	RAINFALL	TYPEZ	RAINFALL	TYPEZ	RAINFALL	TYPEZ	RAINFALL	TYPEZ	RAINFALL	TYPEZ	RAINFALL	TYPEZ	RAINFALL	TYPEZ	RAINFALL	TYPEZ	RAINFALL	TYPEZ	RAINFALL	TYPEZ	RAINFALL	TYPEZ	RAINFALL	TYPEZ	RAINFALL	TYPEZ	RAINFALL	TYPEZ	RAINFALL	TYPEZ	RAINFALL	TYPEZ	RAINFALL	TYPEZ	RAINFALL	TYPEZ	RAINFALL	TYPEZ	RAINFALL	TYPEZ	RAINFALL	TYPEZ	RAINFALL	TYPEZ	RAINFALL	TYPEZ	RAINFALL	TYPEZ	RAINFALL	TYPEZ	RAINFALL	TYPEZ	RAINFALL	TYPEZ	RAINFALL	TYPEZ	RAINFALL	TYPEZ	RAINFALL	TYPEZ	RAINFALL	TYPEZ	RAINFALL	TYPEZ	RAINFALL	TYPEZ	RAINFALL	TYPEZ	RAINFALL	TYPEZ	RAINFALL	TYPEZ	RAINFALL	TYPEZ	RAINFALL	TYPEZ	RAINFALL	TYPEZ	RAINFALL	TYPEZ	RAINFALL	TYPEZ	RAINFALL	TYPEZ	RAINFALL	TYPEZ	RAINFALL	TYPEZ	RAINFALL	TYPEZ	RAINFALL	TYPEZ	RAINFALL	TYPEZ	RAINFALL	TYPEZ	RAINFALL	TYPEZ	RAINFALL	TYPEZ	RAINFALL	TYPEZ	RAINFALL	TYPEZ	RAINFALL	TYPEZ	RAINFALL	TYPEZ	RAINFALL	TYPEZ	RAINFALL	TYPEZ	RAINFALL	TYPEZ	RAINFALL	TYPEZ	RAINFALL	TYPEZ	RAINFALL	TYPEZ	RAINFALL	TYPEZ	RAINFALL	TYPEZ	RAINFALL	TYPEZ	RAINFALL	TYPEZ	RAINFALL	TYPEZ	RAINFALL	TYPEZ	RAINFALL	TYPEZ	RAINFALL	TYPEZ	RAINFALL	TYPEZ	RAINFALL	TYPEZ	RAINFALL	TYPEZ	RAINFALL	TYPEZ	RAINFALL	TYPEZ	RAINFALL	TYPEZ	RAINFALL	TYPEZ	RAINFALL	TYPEZ	RAINFALL	TYPEZ	RAINFALL	TYPEZ	RAINFALL	TYPEZ	RAINFALL	TYPEZ	RAINFALL	TYPEZ	RAINFALL	TYPEZ	RAINFALL	TYPEZ	RAINFALL	TYPEZ	RAINFALL	TYPEZ	RAINFALL	TYPEZ	RAINFALL	TYPEZ	RAINFALL	TYPEZ	RAINFALL	TYPEZ	RAINFALL	TYPEZ	RAINFALL	TYPEZ	RAINFALL	TYPEZ	RAINFALL	TYPEZ	RAINFALL	TYPEZ	RAINFALL	TYPEZ	RAINFALL	TYPEZ	RAINFALL	TYPEZ	RAINFALL	TYPEZ	RAINFALL	TYPEZ	RAINFALL	TYPEZ	RAINFALL	TYPEZ	RAINFALL	TYPEZ	RAINFALL	TYPEZ	RAINFALL	TYPEZ	RAINFALL	TYPEZ	RAINFALL	TYPEZ	RAINFALL	TYPEZ	RAINFALL	TYPEZ	RAINFALL	TYPEZ	RAINFALL	TYPEZ	RAINFALL	TYPEZ	RAINFALL	TYPEZ	RAINFALL	TYPEZ	RAINFALL	TYPEZ	RAINFALL	TYPEZ	RAINFALL	TYPEZ	RAINFALL	TYPEZ	RAINFALL	TYPEZ	RAINFALL	TYPEZ	RAINFALL	TYPEZ	RAINFALL	TYPEZ	RAINFALL	TYPEZ	RAINFALL	TYPEZ	RAINFALL	TYPEZ	RAINFALL	TYPEZ	RAINFALL	TYPEZ	RAINFALL	TYPEZ	RAINFALL	TYPEZ	RAINFALL	TYPEZ	RAINFALL	TYPEZ	RAINFALL	TYPEZ	RAINFALL	TYPEZ	RAINFALL	TYPEZ	RAINFALL	TYPEZ	RAINFALL
----------	-------	-------	----------	-------	----------	-------	----------	-------	----------	-------	----------	-------	----------	-------	----------	-------	----------	-------	----------	-------	----------	-------	----------	-------	----------	-------	----------	-------	----------	-------	----------	-------	----------	-------	----------	-------	----------	-------	----------	-------	----------	-------	----------	-------	----------	-------	----------	-------	----------	-------	----------	-------	----------	-------	----------	-------	----------	-------	----------	-------	----------	-------	----------	-------	----------	-------	----------	-------	----------	-------	----------	-------	----------	-------	----------	-------	----------	-------	----------	-------	----------	-------	----------	-------	----------	-------	----------	-------	----------	-------	----------	-------	----------	-------	----------	-------	----------	-------	----------	-------	----------	-------	----------	-------	----------	-------	----------	-------	----------	-------	----------	-------	----------	-------	----------	-------	----------	-------	----------	-------	----------	-------	----------	-------	----------	-------	----------	-------	----------	-------	----------	-------	----------	-------	----------	-------	----------	-------	----------	-------	----------	-------	----------	-------	----------	-------	----------	-------	----------	-------	----------	-------	----------	-------	----------	-------	----------	-------	----------	-------	----------	-------	----------	-------	----------	-------	----------	-------	----------	-------	----------	-------	----------	-------	----------	-------	----------	-------	----------	-------	----------	-------	----------	-------	----------	-------	----------	-------	----------	-------	----------	-------	----------	-------	----------	-------	----------	-------	----------	-------	----------	-------	----------	-------	----------	-------	----------	-------	----------	-------	----------	-------	----------	-------	----------	-------	----------	-------	----------	-------	----------	-------	----------	-------	----------	-------	----------	-------	----------	-------	----------	-------	----------	-------	----------	-------	----------	-------	----------	-------	----------	-------	----------	-------	----------	-------	----------	-------	----------	-------	----------	-------	----------	-------	----------	-------	----------	-------	----------	-------	----------	-------	----------	-------	----------	-------	----------	-------	----------	-------	----------	-------	----------	-------	----------	-------	----------	-------	----------	-------	----------	-------	----------	-------	----------	-------	----------	-------	----------	-------	----------	-------	----------	-------	----------	-------	----------	-------	----------	-------	----------	-------	----------	-------	----------	-------	----------	-------	----------	-------	----------	-------	----------	-------	----------	-------	----------	-------	----------	-------	----------	-------	----------	-------	----------	-------	----------	-------	----------	-------	----------	-------	----------	-------	----------	-------	----------	-------	----------	-------	----------	-------	----------	-------	----------	-------	----------	-------	----------	-------	----------	-------	----------	-------	----------	-------	----------	-------	----------	-------	----------	-------	----------	-------	----------	-------	----------	-------	----------	-------	----------	-------	----------	-------	----------	-------	----------	-------	----------	-------	----------	-------	----------	-------	----------	-------	----------	-------	----------	-------	----------	-------	----------	-------	----------	-------	----------	-------	----------	-------	----------	-------	----------	-------	----------	-------	----------	-------	----------	-------	----------	-------	----------	-------	----------	-------	----------	-------	----------	-------	----------	-------	----------	-------	----------	-------	----------	-------	----------	-------	----------	-------	----------	-------	----------	-------	----------	-------	----------	-------	----------	-------	----------	-------	----------	-------	----------	-------	----------	-------	----------	-------	----------	-------	----------	-------	----------	-------	----------	-------	----------	-------	----------	-------	----------	-------	----------	-------	----------	-------	----------	-------	----------	-------	----------	-------	----------	-------	----------	-------	----------	-------	----------	-------	----------	-------	----------	-------	----------	-------	----------	-------	----------	-------	----------	-------	----------	-------	----------	-------	----------	-------	----------	-------	----------	-------	----------	-------	----------	-------	----------	-------	----------	-------	----------	-------	----------	-------	----------	-------	----------	-------	----------	-------	----------	-------	----------	-------	----------	-------	----------	-------	----------	-------	----------	-------	----------	-------	----------	-------	----------	-------	----------	-------	----------	-------	----------	-------	----------	-------	----------	-------	----------	-------	----------	-------	----------	-------	----------	-------	----------	-------	----------	-------	----------	-------	----------	-------	----------	-------	----------	-------	----------	-------	----------	-------	----------	-------	----------	-------	----------	-------	----------	-------	----------	-------	----------	-------	----------	-------	----------	-------	----------	-------	----------	-------	----------	-------	----------	-------	----------	-------	----------	-------	----------	-------	----------	-------	----------	-------	----------	-------	----------	-------	----------	-------	----------	-------	----------	-------	----------	-------	----------	-------	----------	-------	----------	-------	----------	-------	----------	-------	----------	-------	----------	-------	----------	-------	----------	-------	----------	-------	----------	-------	----------	-------	----------	-------	----------	-------	----------	-------	----------	-------	----------	-------	----------	-------	----------	-------	----------	-------	----------	-------	----------	-------	----------	-------	----------	-------	----------	-------	----------	-------	----------	-------	----------	-------	----------	-------	----------	-------	----------	-------	----------	-------	----------	-------	----------	-------	----------	-------	----------	-------	----------	-------	----------	-------	----------	-------	----------	-------	----------	-------	----------	-------	----------	-------	----------	-------	----------	-------	----------	-------	----------	-------	----------	-------	----------	-------	----------	-------	----------	-------	----------	-------	----------	-------	----------	-------	----------	-------	----------	-------	----------	-------	----------	-------	----------	-------	----------	-------	----------	-------	----------	-------	----------	-------	----------	-------	----------	-------	----------	-------	----------	-------	----------	-------	----------	-------	----------	-------	----------	-------	----------	-------	----------	-------	----------	-------	----------	-------	----------	-------	----------	-------	----------	-------	----------	-------	----------	-------	----------	-------	----------	-------	----------	-------	----------	-------	----------	-------	----------	-------	----------	-------	----------	-------	----------	-------	----------	-------	----------