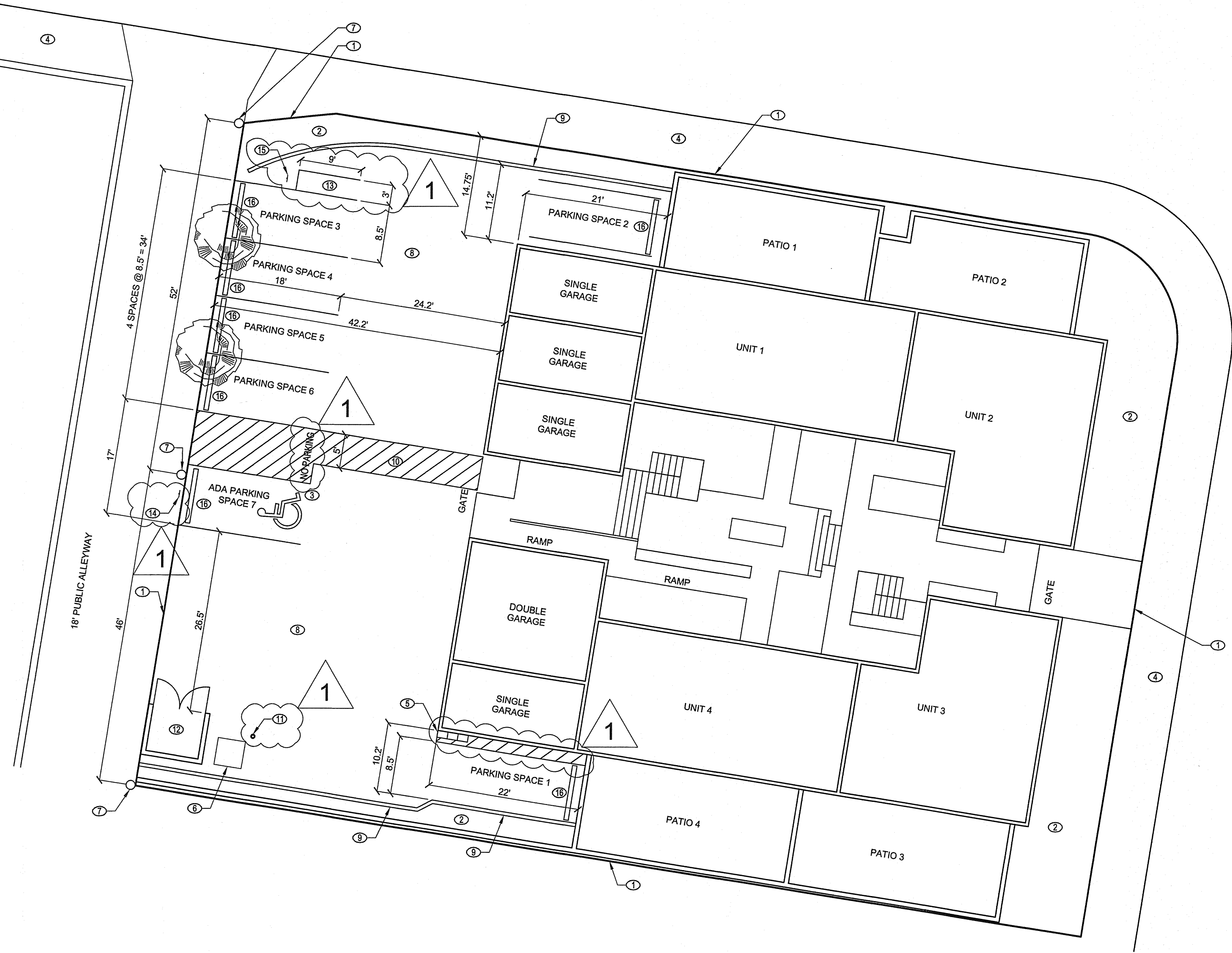
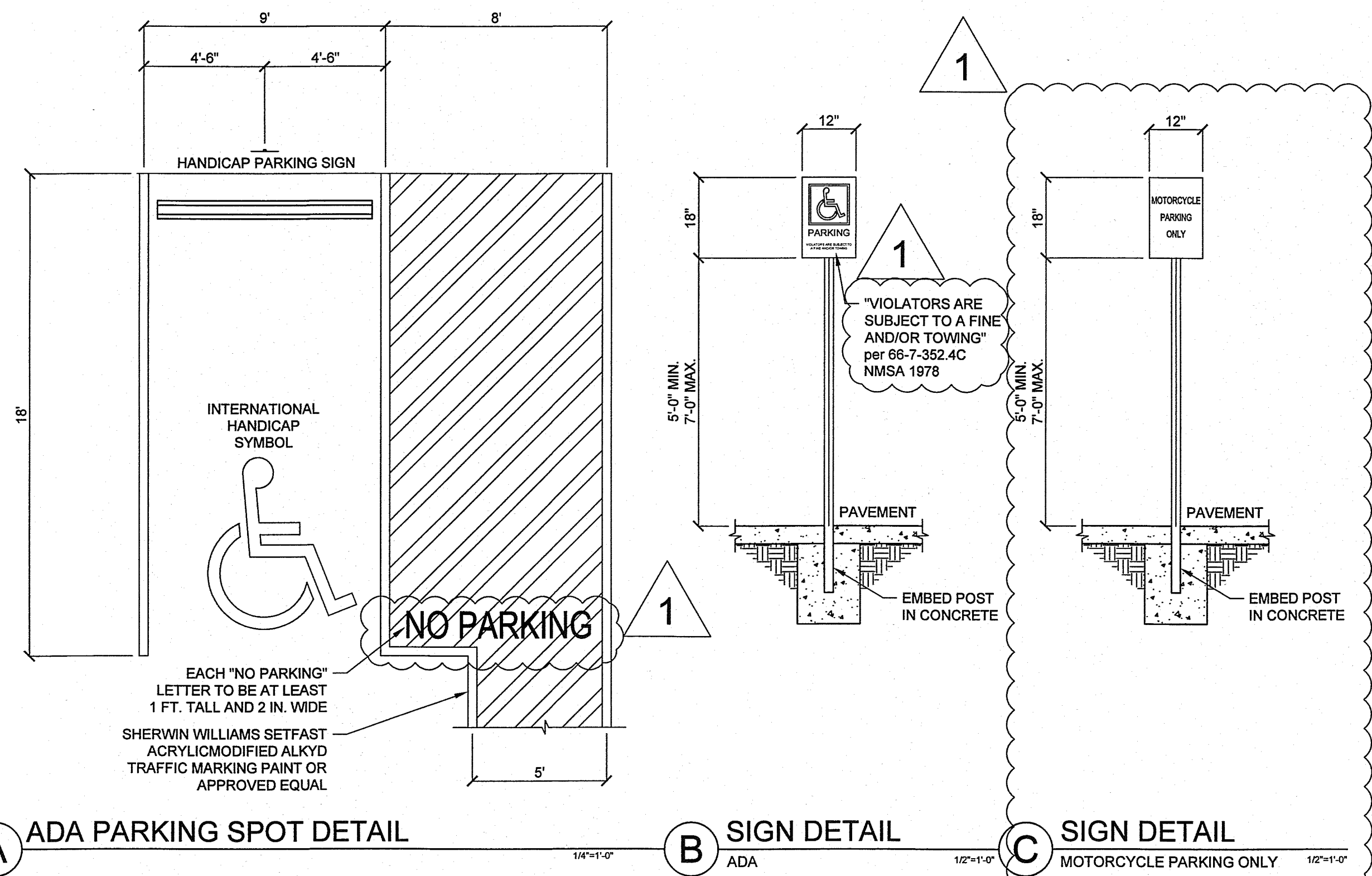


ZONE MAP ATLAS K-14-Z
HUNING HIGHLAND ADDITION
ZONING R-ML



SITE PLAN

LEGAL DESCRIPTION

Lot numbered Two-A-1-A (2-A-1-A) in block numbered Twenty-nine (29) of HUNING'S HIGHLAND ADDITION as the same is shown and designated on the plat thereof, filed in the office of the County Clerk of Bernalillo County, New Mexico on July 18-2002 in Book 2002C, Page 245.

EXECUTIVE SUMMARY

We believe the property replat was recorded in 2004. We were not able through both the original developer nor the city of Albuquerque to get any documentation besides the unsigned plat attached.

- LOCATION is within Huning Highlands addition HPO-4.
- This property is located on the southwest corner of Lead and High St. at 401 High St. SE 87106.
- This property was built and signed off on in 2005. All requirements were met at the time.
- Owners wish to restripe the parking lot to designate an ADA space.

TCL LEGEND

- Property Line
- Existing Landscaping
- ADA parking space see detail A.
- Existing sidewalk
- Existing Electrical boxes
- Existing Transformer
- Existing Power Pole
- Existing Asphalt
- Existing Curb
- 5' wide pedestrian access route
- Existing bollard to be painted yellow
- Existing Dumpster enclosure
- Motorcycle Parking Space
- Handicap parking sign
- Motorcycle parking sign
- Existing parking block

REQUIRED PARKING PER IDO MINIMUM REQUIREMENTS

REQUIRED PARKING PER IDO MINIMUM REQUIREMENTS	SPACES
Condominium Units	
9 - 1 Bedroom	9
Required off street Parking	1
Required Motorcycle Parking	5
On Street Parking	
Off street parking provided	
Motor Cycle	1
Single Car Garage	4
Double Car Garage	2
Parking Space	6
ADA van accessible space	1
Total off street parking provided	14

TRAFFIC CIRCULATION LAYOUT APPROVED

11/25/2020

Jeanna Wolfenbarger