

- KEYED NOTES**
- EXISTING SIDEWALK CULVERT IN PUBLIC RIGHT-OF-WAY.
 - HANDICAP RAMP. SEE ARCHITECTURAL PLANS.
 - HEADER CURB FOR ELEVATION CHANGE AGAINST EDGE OF BUILDING. SEE ARCHITECTURAL PLANS.
 - HEADER CURB FOR ELEVATION CHANGE WITHIN THE SIDEWALK AT A FENCE AREA. SEE ARCHITECTURAL DETAILS.
 - NOT USED
 - 2' WIDE CONCRETE ALLEY GUTTER. SEE DETAIL ON SHEET CG-501.
 - INTERNAL FLOOR ELEVATION CHANGE.
 - STORM WATER CISTERN. SEE DETAIL FOR CISTERN ON SHEET CG-502.
 - STORM DRAINS PER DETAILS ON SHEET CG-502.
 - 24" DIA NYLOPLAST BASIN PER DETAILS ON SHEET CG-503.

NOTE:
SEE SHEETS CG-501, CG-502, CG-503, & CG-504 FOR STORM DRAIN & CISTERN DETAILS AND DRAINAGE NOTES.

Dekker Perich Sabatini
7601 Jefferson NE Suite 100
Albuquerque, NM 87109
505 761-9700
fax 761-4222
dps@dpsdesign.org
ARCHITECT

ENGINEER

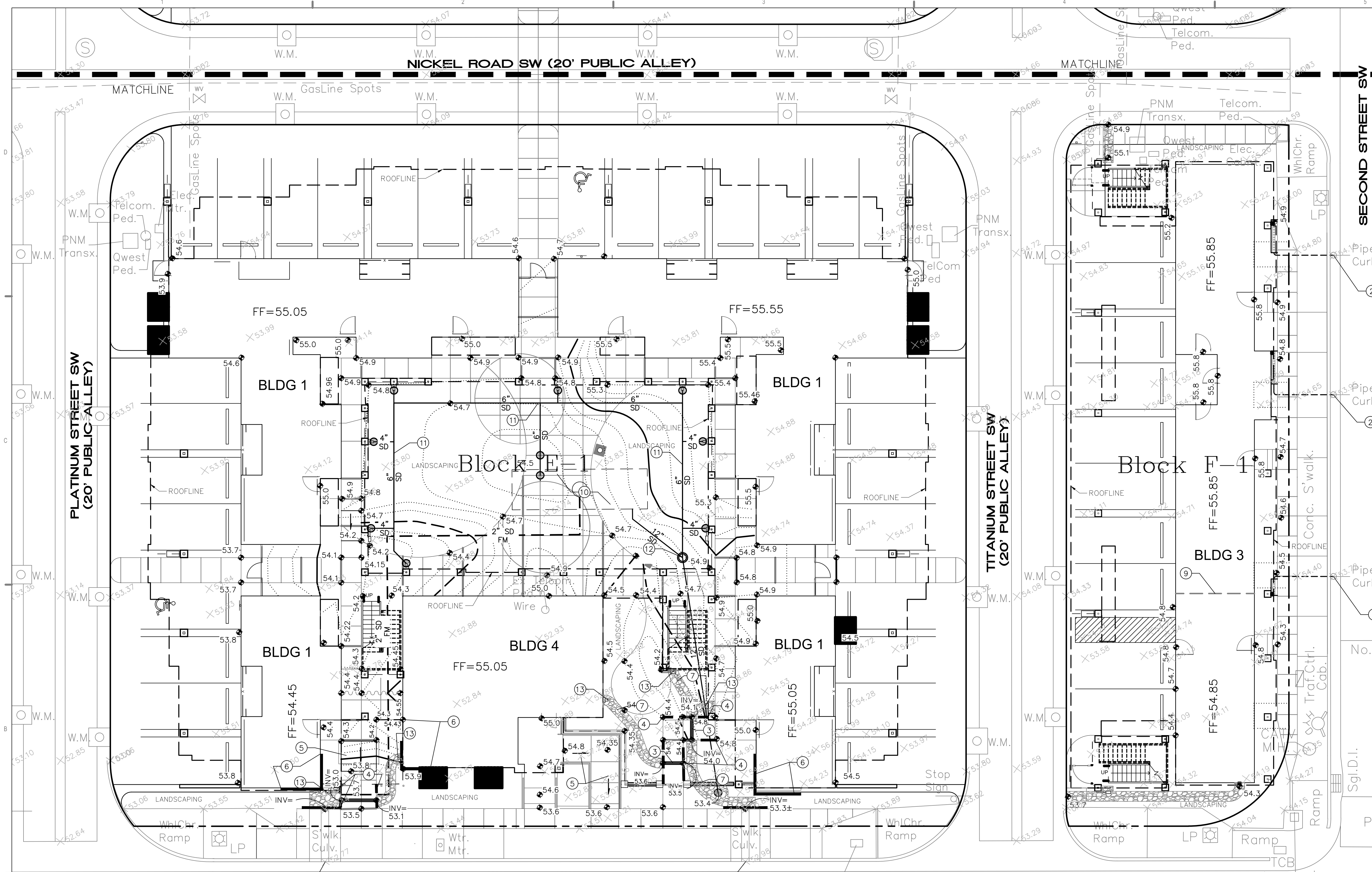
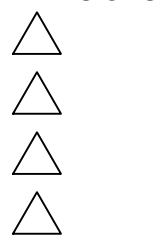
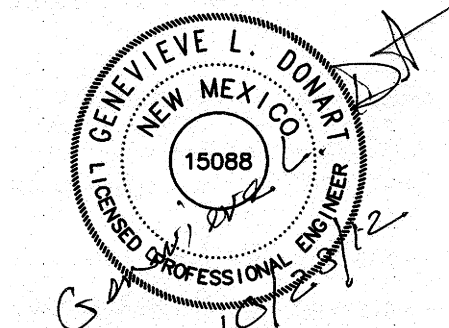
PROJECT

Casitas de Colores
215 Lead Avenue
Albuquerque, New Mexico

REVISIONS	
△ 9/4/12	MODIFIED SD FM PIPING
△	
△	
△	
DRAWN BY GLD	
REVIEWED BY	
DATE 9/4/12	
PROJECT NO. 12-0047	
DRAWING NAME	
GRADING & DRAINAGE PLAN	

ISAACSON & ARFMAN, P.A.
Consulting Engineering Associates
128 Monroe Street N.E.
Albuquerque, New Mexico 87108
Ph. 505-268-8828 www.iacivil.com

SHEET NO. **CG-101**
OF



NOTE:
SEE SHEETS CG-501, CG-502, &
CG-503 FOR STORM DRAIN DETAILS
AND DRAINAGE NOTES.

KEYED NOTES

1. EXISTING SIDEWALK CULVERT IN PUBLIC RIGHT-OF-WAY.
2. EXISTING PIPES UNDER PUBLIC SIDEWALK FOR ROOF DRAIN CONNECTION.
3. 2-4" DRAIN PIPES THROUGH THE SIDEWALK PER DETAIL ON SHEET CG-501, PER INVERTS SHOWN ON PLAN.
4. TURN-DOWN SIDEWALK EDGE. SEE ARCHITECTURAL PLANS.
5. HANDICAP RAMP. SEE ARCHITECTURAL PLANS.
6. HEADER CURB FOR ELEVATION CHANGE AGAINST EDGE OF BUILDING. SEE ARCHITECTURAL PLANS.
7. FRACTURED FACE ROCK SWALE PER DETAIL ON SHEET CG-501.
8. NOT USED.
9. INTERNAL FLOOR ELEVATION CHANGE.
10. STORM WATER CISTERN. SEE DETAIL FOR CISTERN ON SHEET CG-502.
11. ROOF DRAINS DISCHARGE TO 6" ADS N-12 WT (WATER-TIGHT) DRAINAGE SYSTEM WITH IN-LINE DRAINS PER DETAIL ON SHEET CG-502.
12. 24" DIA NYLOPLAST BASIN PER DETAILS ON SHEET CG-502.
13. ROOF DRAIN DISCHARGES TO FRACTURED FACE ROCK PAD.

ISAACSON & ARFMAN, P.A.
Consulting Engineering Associates
128 Monroe Street N.E.
Albuquerque, New Mexico 87108
Ph. 505-268-8828 www.iacivil.com