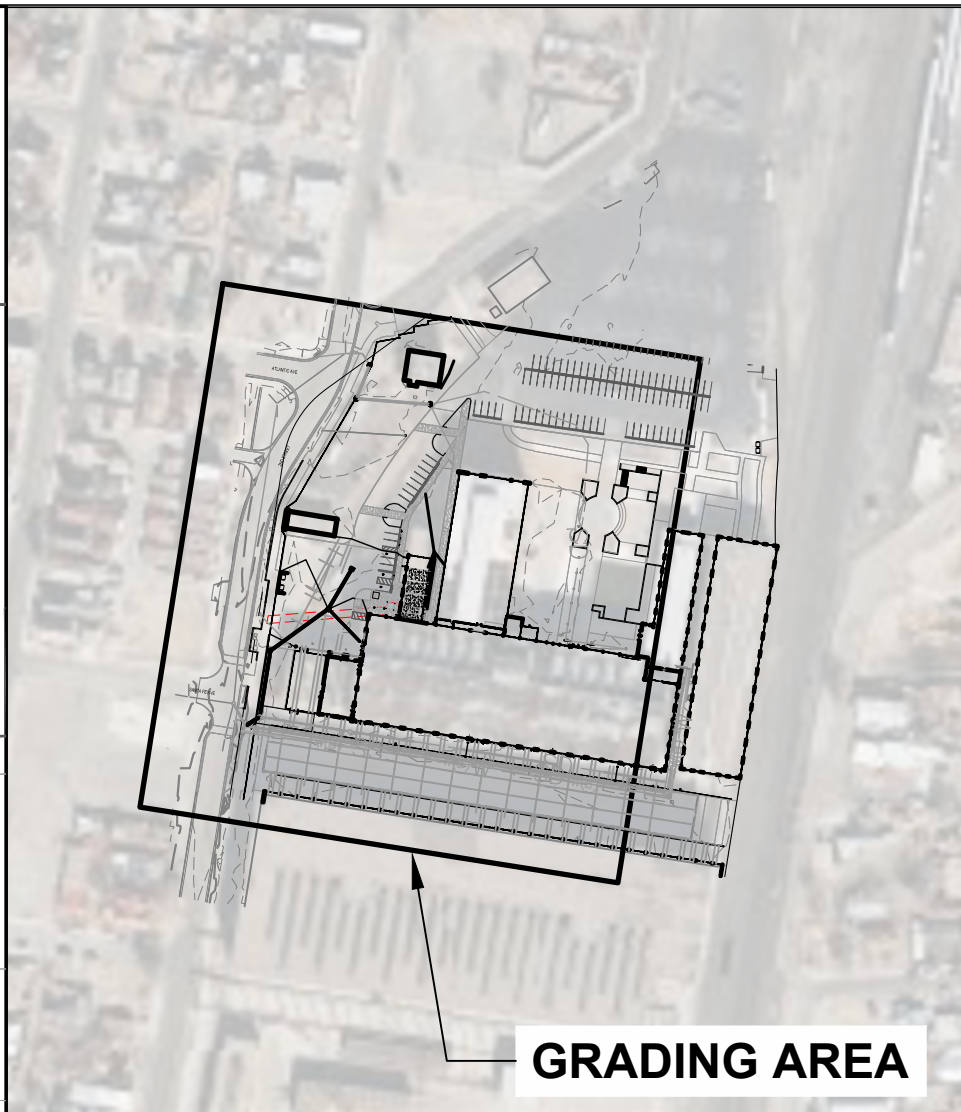
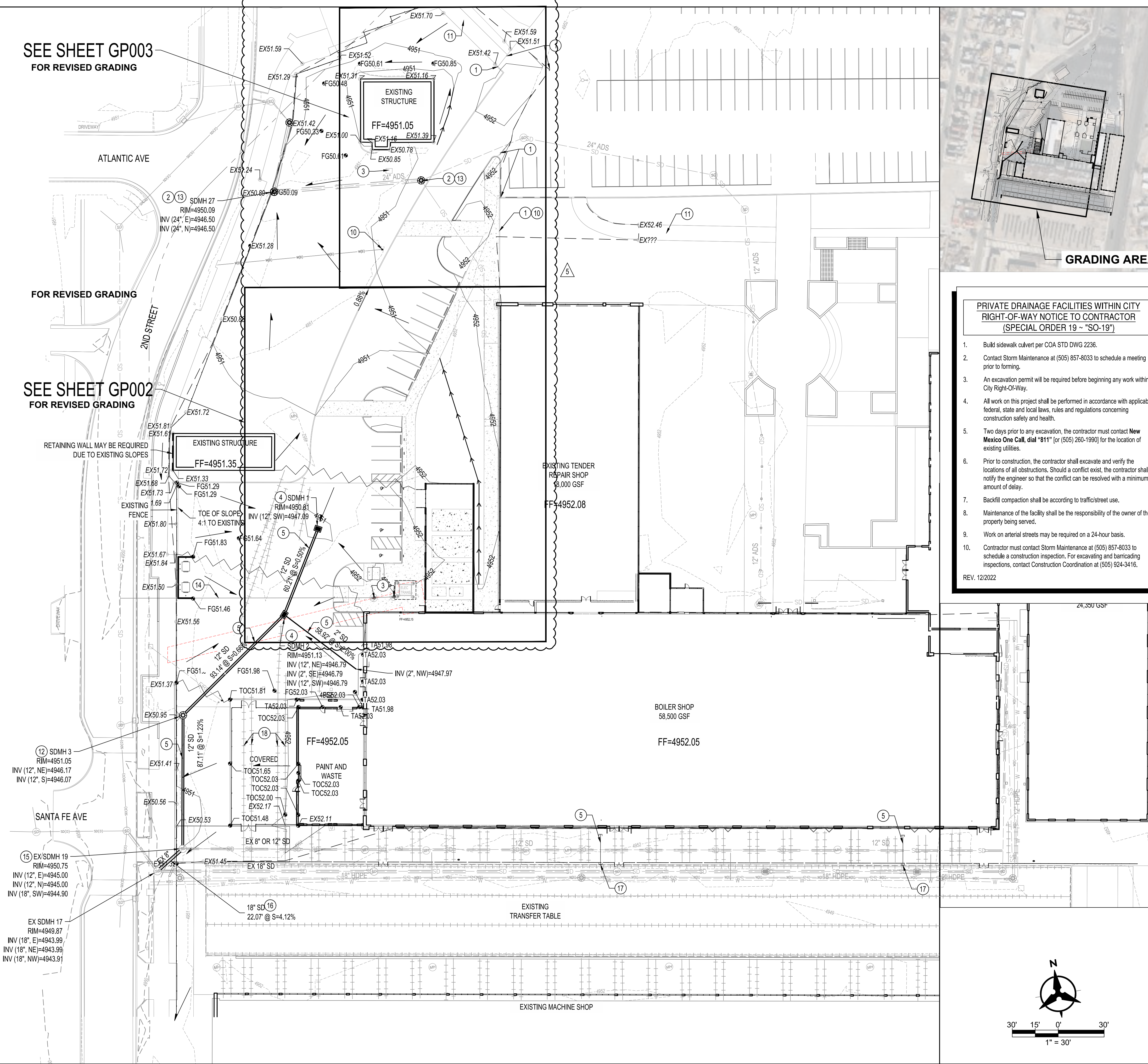


SEE SHEET GP003
FOR REVISED GRADING

SEE SHEET GP002
FOR REVISED GRADING



GRADING AREA

PRIVATE DRAINAGE FACILITIES WITHIN CITY
RIGHT-OF-WAY NOTICE TO CONTRACTOR
(SPECIAL ORDER 19 ~ "SO-19")

- Build sidewalk culvert per COA STD DWG 2236.
- Contact Storm Maintenance at (505) 857-8033 to schedule a meeting prior to forming.
- An excavation permit will be required before beginning any work within City Right-Of-Way.
- All work on this project shall be performed in accordance with applicable federal, state and local laws, rules and regulations concerning construction safety and health.
- Two days prior to any excavation, the contractor must contact **New Mexico One Call**, dial "811" [or (505) 260-1990] for the location of existing utilities.
- Prior to construction, the contractor shall excavate and verify the locations of all obstructions. Should a conflict exist, the contractor shall notify the engineer so that the conflict can be resolved with a minimum amount of delay.
- Backfill compaction shall be according to traffic/street use.
- Maintenance of the facility shall be the responsibility of the owner of the property being served.
- Work on arterial streets may be required on a 24-hour basis.
- Contractor must contact Storm Maintenance at (505) 857-8033 to schedule a construction inspection. For excavating and barricading inspections, contact Construction Coordination at (505) 924-3416.

REV. 12/2022

GRADING KEYED NOTES

- MATCH EXISTING
- ADJUST RIM TO MATCH PROPOSED GRADE.
- FIELD VERIFY EXISTING UTILITY. PROTECT IN PLACE. ADJUST RIM TO NEW GRADES. COORDINATE ANY DISCREPANCIES WITH OWNER, ENGINEER, AND ARCHITECT.
- INSTALL STORM INLET STRUCTURE WITH 2X2 TRAFFIC RATED GRATE (NYLOPLAST OR APPROVED EQUAL).
- HDPE (N12 OR APPROVED EQUAL) STORM DRAIN PIPE, SIZE & SLOPE PER PLAN.
- CONTRACTOR TO POTHOLE EXISTING UTILITY TO CONFIRM SIZE, LOCATION, & INVERT. CONTACT ENGINEER WITH ANY DISCREPANCIES OR CONFLICTS WITH PROPOSED DESIGN.
- CONNECT NEW STORM DRAIN TO EXISTING STORM DRAIN INLET WITH WATERTIGHT CONNECTION.
- INSTALL 6" OPENING IN RETAINING WALL FOR PENETRATION OF STORM DRAIN PIPE. SEE STRUCTURAL PLANS FOR MORE INFORMATION.
- CONTRACTOR TO MAINTAIN CAUTION DURING CONSTRUCTION AND AVOID CONFLICT WITH EXISTING SITE FEATURES (LIGHT POLES, UTILITIES, LANDSCAPING ETC.).
- PROTECT IN PLACE.
- EXISTING SIDEWALK TO REMAIN.
- INSTALL 24" STORM DRAIN STRUCTURE WITH TRAFFIC RATED RIM (NYLOPLAST OR APPROVED EQUAL).
- EXISTING SLOTTED MANHOLE ACTING AS INLET, PROTECT IN PLACE.
- CONTRACTOR TO FIELD VERIFY EXISTING OF STORM DRAIN IN THIS LOCATION PRIOR TO CONSTRUCTION. IF PRESENT, CONTACT ENGINEER IMMEDIATELY FOR DESIGN REVISION.
- REMOVE EXISTING MANHOLE AND CONSTRUCT NEW TYPE E MANHOLE PER COA STD DWG 2101.
- REMOVE EXISTING 8" STORM DRAIN AND REPLACE WITH 18" HDPE (N12 OR APPROVED EQUAL) STORM DRAIN. INVERTS PER PLAN.
- STORM DRAIN PIPE TO DAYLIGHT AT BOTTOM OF TRANSFER TABLE. DOWNSPOUT NOZZLE DETAILS PER PLUMBING PLANS.
- RE LAY TRACKS TO MATCH FINISHED GRADE. SEE ARCHITECTURAL PLAN FOR MORE INFORMATION.

LEGEND

- EXISTING INDEX CONTOUR
- EXISTING INTERMEDIATE CONTOUR
- EXISTING GRADE SPOT ELEVATION
- PROPOSED FINISHED GRADE SPOT ELEVATION
- TC=TOP OF CURB, FL=FLOW LINE, TS=TOP OF SIDEWALK, TOC=TOP OF CONCRETE, EX=EXISTING GRADE TO MATCH TG=TOP OF GRATE, FGH=FINISH GROUND HIGH, FGL=FINISH GROUND LOW
- DIRECTION OF FLOW
- EXISTING STORM DRAIN LINE
- PROPOSED STORM DRAIN LINE
- PROPOSED STORM DRAIN MANHOLE
- PROPOSED STORM DRAIN INLETS
- PROPOSED INDEX CONTOUR
- PROPOSED INTERMEDIATE CONTOUR
- WATER BLOCK
- GRADING LIMITS

NOTE TO CONTRACTOR

USE OF HDPE REQUIRES A PRE-CONSTRUCTION MEETING WITH MANUFACTURERS REPRESENTATIVE TO ENSURE PROPER INSTALLATION PRACTICES ARE UNDERSTOOD AND USED BY CONTRACTOR. CONTRACTOR SHALL NOTIFY ENGINEER, IN WRITING, THE DATE AND TIME OF THE COMPLETION OF THIS MEETING.



NEW MEXICO MEDIA ACADEMY +

CNM FILM

HISTORIC SHELL - 100% CONSTRUCTION DOCUMENTS

ALBUQUERQUE RAIL YARDS

777 1ST ST SW, ALBUQUERQUE, NM 87102

5	06-16-2025	CHILLER YARD GRADING
4	09-23-2024	ASH-013R0 SITE CURB
3	06-22-2024	GRADING UPDATES
2	07-01-2024	MEP COORDINATION
1	02-14-2024	GRADING EDITS
NO	DATE	DESCRIPTION

DATE:	2023-12-11
PROJECT #:	20230392
DRAWN BY:	DH/DO
CHECKED BY:	KMK

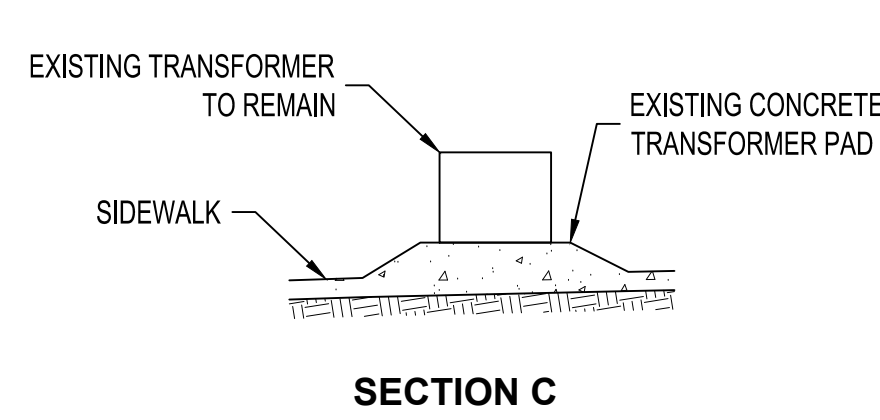
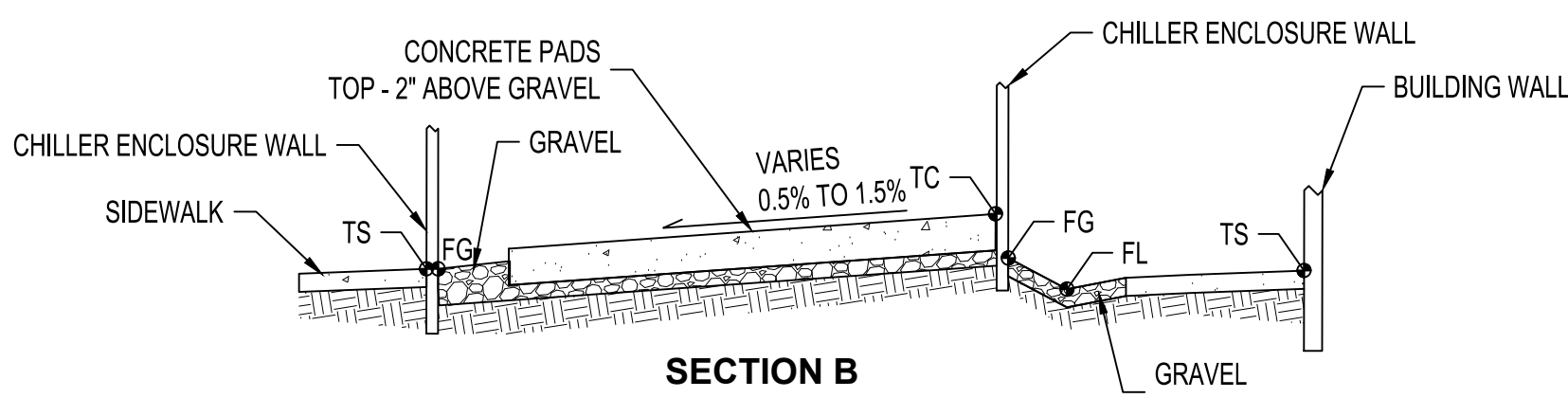
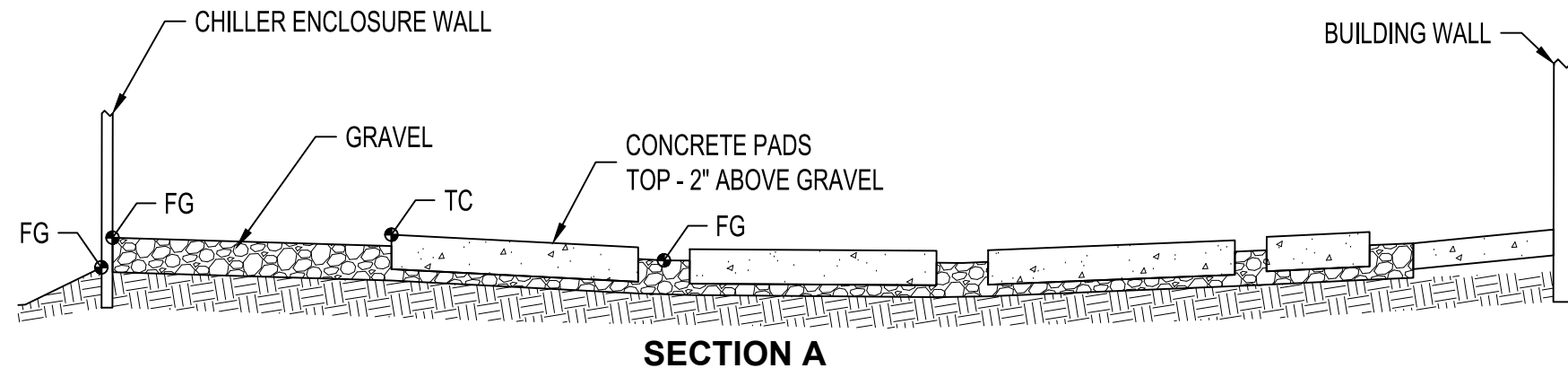
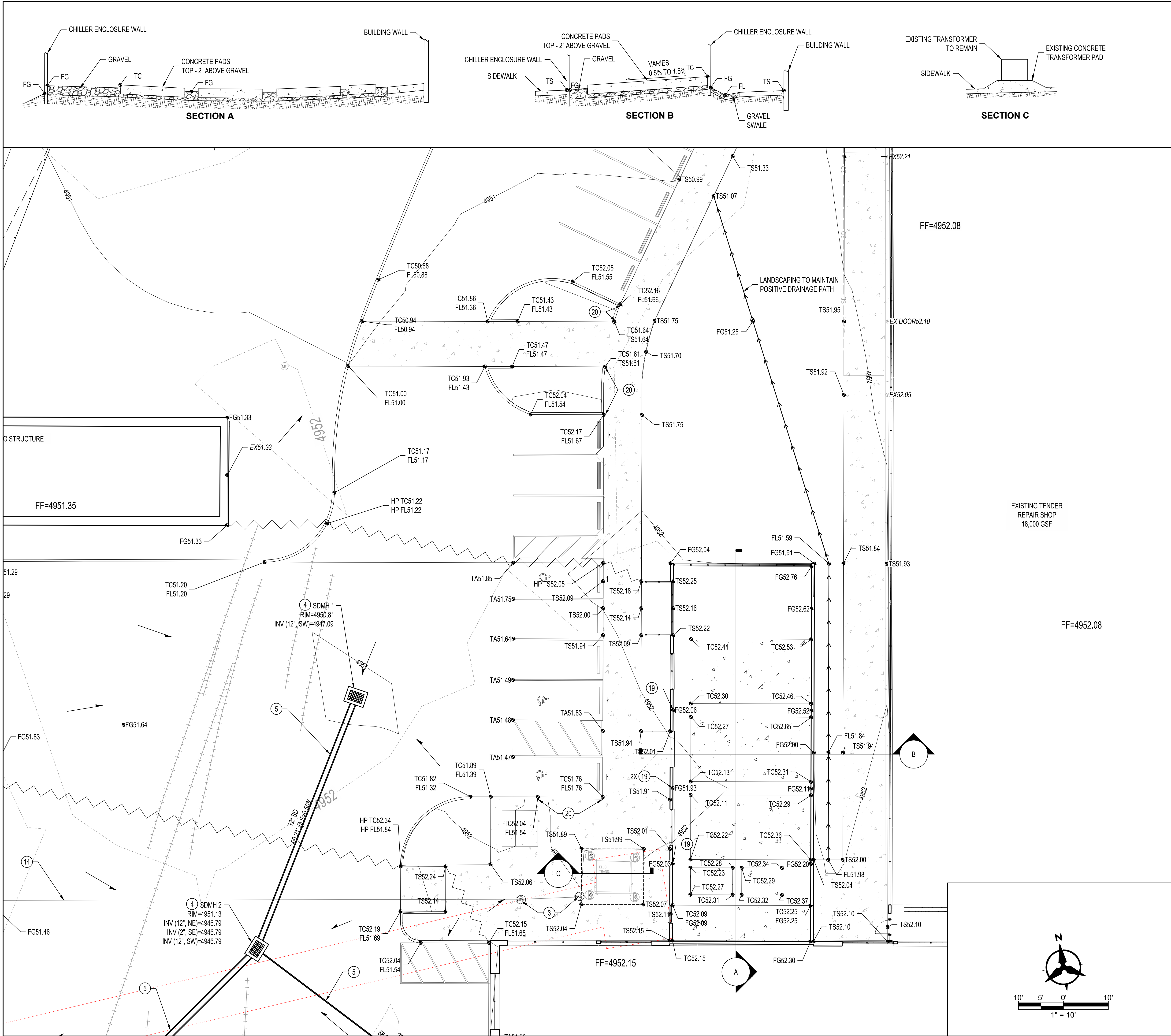
COPYRIGHT: SMPC Architects © 2023

These documents were prepared for this specific project only. SMPC Architects' liability is limited to this specific project, and does not extend to reuse of these documents for other projects.

SHEET TITLE

GRADING
PLAN

GP001.R5



GRADING KEYED NOTES

1. MATCH EXISTING
2. ADJUST RIM TO MATCH PROPOSED GRADE.
3. FIELD VERIFY EXISTING UTILITY. PROTECT IN PLACE. ADJUST RIM TO NEW GRADES. COORDINATE ANY DISCREPANCIES WITH OWNER, ENGINEER, AND ARCHITECT.
4. INSTALL STORM INLET STRUCTURE WITH 2X2 TRAFFIC RATED GRATE (NYLOPLAST OR APPROVED EQUAL).
5. HDPE (N12 OR APPROVED EQUAL) STORM DRAIN PIPE. SIZE & SLOPE PER PLAN.
6. CONTRACTOR TO POTHOLE EXISTING UTILITY TO CONFIRM SIZE, LOCATION, & INVERT. CONTACT ENGINEER WITH ANY DISCREPANCIES OR CONFLICTS WITH PROPOSED DESIGN.
7. CONNECT NEW STORM DRAIN TO EXISTING STORM DRAIN INLET WITH WATERTIGHT CONNECTION.
8. INSTALL 6" OPENING IN RETAINING WALL FOR PENETRATION OF STORM DRAIN PIPE. SEE STRUCTURAL PLANS FOR MORE INFORMATION.
9. CONTRACTOR TO MAINTAIN CAUTION DURING CONSTRUCTION AND AVOID CONFLICT WITH EXISTING SITE FEATURES (LIGHT POLES, UTILITIES, LANDSCAPING ETC.).
10. PROTECT IN PLACE.
11. EXISTING SIDEWALK TO REMAIN.
12. INSTALL 24" STORM DRAIN STRUCTURE WITH TRAFFIC RATED RIM (NYLOPLAST OR APPROVED EQUAL).
13. EXISTING SLOTTED MANHOLE ACTING AS INLET, PROTECT IN PLACE.
14. CONTRACTOR TO FIELD VERIFY EXISTING OF STORM DRAIN IN THIS LOCATION PRIOR TO CONSTRUCTION. IF PRESENT, CONTACT ENGINEER IMMEDIATELY FOR DESIGN REVISION.
15. REMOVE EXISTING MANHOLE AND CONSTRUCT NEW TYPE E MANHOLE PER COA STD DWG 2101.
16. REMOVE EXISTING 8" STORM DRAIN AND REPLACE WITH 18" HDPE (N12 OR APPROVED EQUAL) STORM DRAIN. INVERTS PER PLAN.
17. STORM DRAIN PIPE TO DAYLIGHT AT BOTTOM OF TRANSFER TABLE. DOWNSPOUT NOZZLE DETAILS PER PLUMBING PLANS.
18. RE LAY TRACKS TO MATCH FINISHED GRADE. SEE ARCHITECTURAL PLAN FOR MORE INFORMATION.
19. INSTALL TURN BLOCK FOR DRAINAGE.
20. TRANSITION FROM FLUSH CURB TO STANDARD 6" CURB.

LEGEND

- 5025 — EXISTING INDEX CONTOUR
- 5024 — EXISTING INTERMEDIATE CONTOUR
- 26.75 EXISTING GRADE SPOT ELEVATION
- 26.75 PROPOSED FINISHED GRADE SPOT ELEVATION
- TC=TOP OF CURB, FL=FLOW LINE, TS=TOP OF SIDEWALK, TOC=TOP OF CONCRETE, EX=EXISTING GRADE TO MATCH TG=TOP OF GRATE, FGH=FINISH GROUND HIGH, FGL=FINISH GROUND LOW
- DIRECTION OF FLOW
- SD — EXISTING STORM DRAIN LINE
- SD — PROPOSED STORM DRAIN LINE
- ⊙ PROPOSED STORM DRAIN MANHOLE
- ⊙ PROPOSED STORM DRAIN INLETS
- 5025 — PROPOSED INDEX CONTOUR
- 5025 — PROPOSED INTERMEDIATE CONTOUR
- WATER BLOCK
- GRADING LIMITS

NOTE TO CONTRACTOR

USE OF HDPE REQUIRES A PRE-CONSTRUCTION MEETING WITH MANUFACTURERS REPRESENTATIVE TO ENSURE PROPER INSTALLATION PRACTICES ARE UNDERSTOOD AND USED BY CONTRACTOR. CONTRACTOR SHALL NOTIFY ENGINEER, IN WRITING, THE DATE AND TIME OF THE COMPLETION OF THIS MEETING.



NEW MEXICO MEDIA ACADEMY + CNM FILM HISTORIC SHELL - 100% CONSTRUCTION DOCUMENTS ALBUQUERQUE RAIL YARDS 777 1ST ST SW, ALBUQUERQUE, NM 87102

NO	DATE	DESCRIPTION
1	06-16-2025	CHILLER YARD GRADING

DATE: 2025-6-13
PROJECT #: 20230392
DRAWN BY: DH/DO
CHECKED BY: KMK

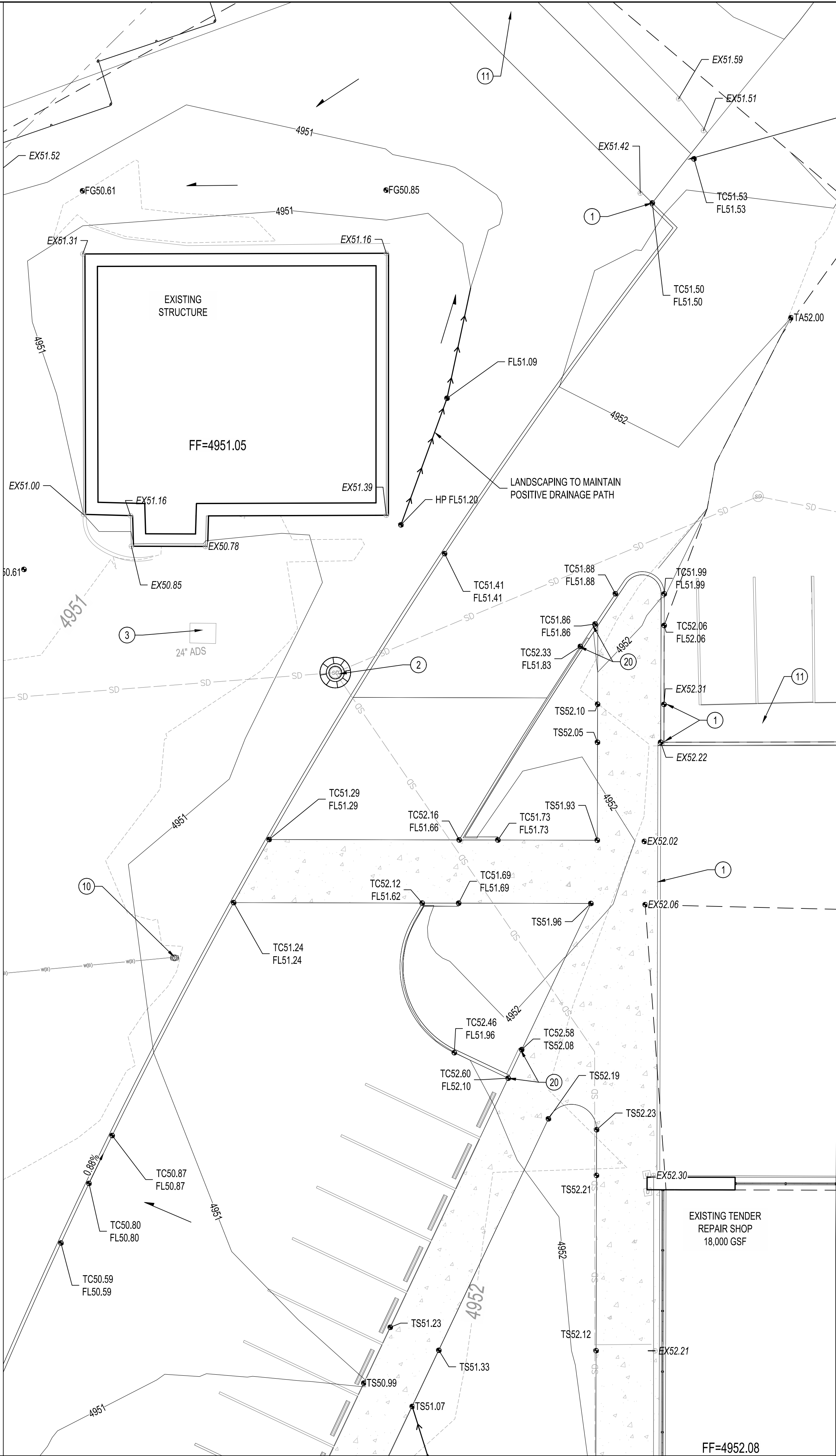
COPYRIGHT: SMPC Architects © 2023

These documents were prepared for this specific project only. SMPC Architects' liability is limited to this specific project, and does not extend to reuse of these documents for other projects.

SHEET TITLE

GRADING
PLAN

GP002.R1



GRADING KEYED NOTES

1. MATCH EXISTING
2. ADJUST RIM TO MATCH PROPOSED GRADE.
3. FIELD VERIFY EXISTING UTILITY. PROTECT IN PLACE. ADJUST RIM TO NEW GRADES. COORDINATE ANY DISCREPANCIES WITH OWNER, ENGINEER, AND ARCHITECT.
4. INSTALL STORM INLET STRUCTURE WITH 2X2 TRAFFIC RATED GRATE (NYLOPLAST OR APPROVED EQUAL).
5. HDPE (N12 OR APPROVED EQUAL) STORM DRAIN PIPE. SIZE & SLOPE PER PLAN.
6. CONTRACTOR TO POTHOLE EXISTING UTILITY TO CONFIRM SIZE, LOCATION, & INVERT. CONTACT ENGINEER WITH ANY DISCREPANCIES OR CONFLICTS WITH PROPOSED DESIGN.
7. CONNECT NEW STORM DRAIN TO EXISTING STORM DRAIN INLET WITH WATERTIGHT CONNECTION.
8. INSTALL 6" OPENING IN RETAINING WALL FOR PENETRATION OF STORM DRAIN PIPE. SEE STRUCTURAL PLANS FOR MORE INFORMATION.
9. CONTRACTOR TO MAINTAIN CAUTION DURING CONSTRUCTION AND AVOID CONFLICT WITH EXISTING SITE FEATURES (LIGHT POLES, UTILITIES, LANDSCAPING ETC.).
10. PROTECT IN PLACE.
11. EXISTING SIDEWALK TO REMAIN.
12. INSTALL 24" STORM DRAIN STRUCTURE WITH TRAFFIC RATED RIM (NYLOPLAST OR APPROVED EQUAL).
13. EXISTING SLOTTED MANHOLE ACTING AS INLET, PROTECT IN PLACE.
14. CONTRACTOR TO FIELD VERIFY EXISTING OF STORM DRAIN IN THIS LOCATION PRIOR TO CONSTRUCTION. IF PRESENT, CONTACT ENGINEER IMMEDIATELY FOR DESIGN REVISION.
15. REMOVE EXISTING MANHOLE AND CONSTRUCT NEW TYPE E MANHOLE PER COA STD DWG 2101.
16. REMOVE EXISTING 8" STORM DRAIN AND REPLACE WITH 18" HDPE (N12 OR APPROVED EQUAL) STORM DRAIN. INVERTS PER PLAN.
17. STORM DRAIN PIPE TO DAYLIGHT AT BOTTOM OF TRANSFER TABLE. DOWNSPOUT NOZZLE DETAILS PER PLUMBING PLANS.
18. RE LAY TRACKS TO MATCH FINISHED GRADE. SEE ARCHITECTURAL PLAN FOR MORE INFORMATION.
19. INSTALL TURN BLOCK FOR DRAINAGE.
20. TRANSITION FROM FLUSH CURB TO STANDARD 6" CURB.

LEGEND

- 5025 — EXISTING INDEX CONTOUR
- 5024 — EXISTING INTERMEDIATE CONTOUR
- 26.75 EXISTING GRADE SPOT ELEVATION
- 26.75 PROPOSED FINISHED GRADE SPOT ELEVATION
- TC=TOP OF CURB, FL=FLOW LINE, TS=TOP OF SIDEWALK, TOC=TOP OF CONCRETE, EX=EXISTING GRADE TO MATCH TG=TOP OF GRATE, FGH=FINISH GROUND HIGH, FGL=FINISH GROUND LOW
- DIRECTION OF FLOW
- SD — EXISTING STORM DRAIN LINE
- SD — PROPOSED STORM DRAIN LINE
- ⊙ PROPOSED STORM DRAIN MANHOLE
- ⊙ PROPOSED STORM DRAIN INLETS
- 5025 — PROPOSED INDEX CONTOUR
- 5025 — PROPOSED INTERMEDIATE CONTOUR
- WATER BLOCK
- GRADING LIMITS

NOTE TO CONTRACTOR

USE OF HDPE REQUIRES A PRE-CONSTRUCTION MEETING WITH MANUFACTURERS REPRESENTATIVE TO ENSURE PROPER INSTALLATION PRACTICES ARE UNDERSTOOD AND USED BY CONTRACTOR. CONTRACTOR SHALL NOTIFY ENGINEER, IN WRITING, THE DATE AND TIME OF THE COMPLETION OF THIS MEETING.



NEW MEXICO MEDIA ACADEMY + CNM FILM HISTORIC SHELL - 100% CONSTRUCTION DOCUMENTS ALBUQUERQUE RAIL YARDS 777 1ST ST SW, ALBUQUERQUE, NM 87102

1	06-16-2025	CHILLER YARD GRADING
NO	DATE	DESCRIPTION
DATE:	2025-6-13	
PROJECT #:	20230392	
DRAWN BY:	DH/DO	
CHECKED BY:	KMK	
COPYRIGHT:	SMPC Architects © 2023	
These documents were prepared for this specific project only. SMPC Architects' liability is limited to this specific project, and does not extend to reuse of these documents for other projects.		
SHEET TITLE		

GRADING PLAN

GP003.R1