

CITY OF ALBUQUERQUE



July 19, 2019

Don Briggs Engineering LLC
Don Briggs
5324 Oakledge Ct. NW
Albuquerque, NM 87120

Re: 915 Silver SE
Lot 20, 915 Silver Ave SW Albuquerque NM 87102
Traffic Circulation Layout
Engineer's/Architect's Stamp 07-11-2019 (K14D118)

Dear Mr. Briggs,

Based upon the information provided in your submittal received 07-15-19, the above referenced plan cannot be approved for Building Permit until the following comments are addressed:

1. Please show a vicinity map showing the location of the development in relation to streets and well known landmarks.
2. List the number of parking spaces required by the zoning code as well as the proposed number of parking spaces including bicycle and motorcycle parking.
3. Provide parking easement document.
4. Show the dimension of the on street parking.
5. Per the Development Process Manual, Chapter 27 Drafting Standards, "Standard sheets must be 24" by 36" having a margin of 2' along the left and 1" on the top and bottom".
6. A scale of 1"=20' is recommended for sites less than 5 acres.

PO Box 1293

Albuquerque

NM 87103

www.cabq.gov

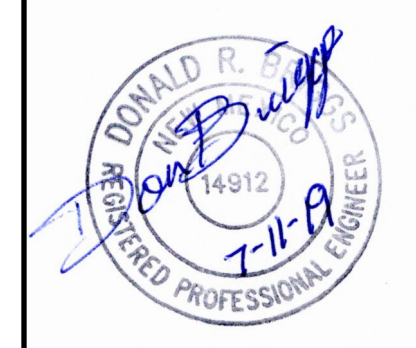
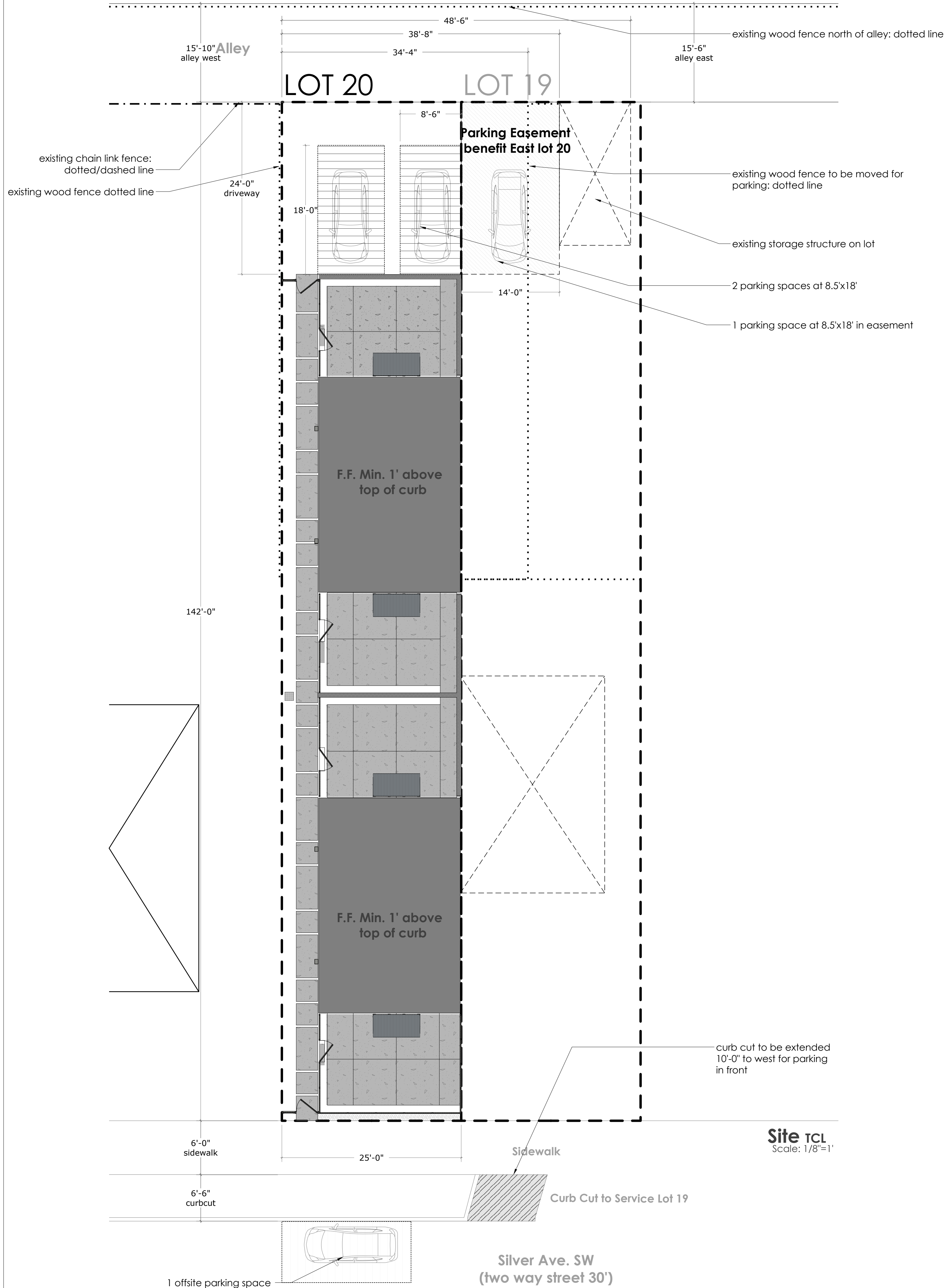
Resubmit a revised plan along with fully completed Drainage Transportation Information Sheet to front counter personnel for log in and evaluation by Transportation. PDF copies of the plans and submittal package must be emailed to PLNDRS@cabq.gov at time of resubmittal. If you have any questions, please contact me at 924-3675.

Sincerely,

A handwritten signature in black ink, appearing to read 'Mojgan Maadandar', with a long horizontal flourish extending to the right.

Mojgan Maadandar, E.I.
Associate Engineer, Planning Dept.
Development Review Services

/MM via: email
C: CO Clerk, File



DON BRIGGS
Engineering LLC
505-249-4843
donbriggsengineering@gmail.com
5524 Oakridge Ct. NW, Albuquerque, NM 87120

QUADPLEX

915 Silver Avenue SW, Lot 20, Albuquerque, NM, 87102

Revisions TCL C-201	
NO.	Remarks

Traffic Circulation Layout