

CITY OF ALBUQUERQUE



September 13, 2019

Mullen Heller Architecture
Doug Heller
1718 Central Ave SW, Suite D
Albuquerque, NM 87104

Re: Burke Bakehouse
640 Broadway Blvd SE
Traffic Circulation Layout
Engineer's/Architect's Stamp 09-05-2019 (K14D119)

Dear Heller,

Based upon the information provided in your submittal received 09-05-2019 the above referenced plan cannot be approved for Building Permit until the following comments are addressed:

1. Per the Development Process Manual, Chapter 27 Drafting Standards, "Standard sheets must be 24" by 36" having a margin of 2' along the left and 1" on the top and bottom".
2. A scale of 1"=20' is recommended for sites less than 5 acres.
3. **Parking spaces cannot be bisected by lot lines. Platting action is required.**
4. Motorcycle parking spaces shall be designated by its own conspicuously **posted upright sign**, either free-standing or wall mounted per the zoning code.
5. Per the IDO, a 6 ft. wide ADA accessible pedestrian pathway is required from the public sidewalk to the building entrances. Please clearly show this pathway and provide details.
6. Demonstrate sight distance at corner provide dimensions from back of curb to property line.

PO Box 1293

Albuquerque

NM 87103

www.cabq.gov

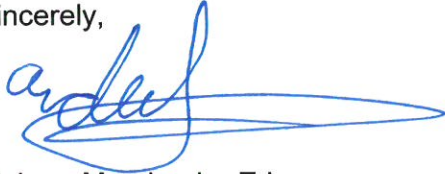
Once corrections are complete resubmit

1. The Traffic Circulation Layout
2. A Drainage Transportation Information Sheet (DTIS)
3. Send an electronic copy of your submittal to PLNDRS@cabq.gov.
4. The \$75 re-submittal fee.

for log in and evaluation by Transportation.

If you have any questions, please contact me at (505) 924-3675

Sincerely,

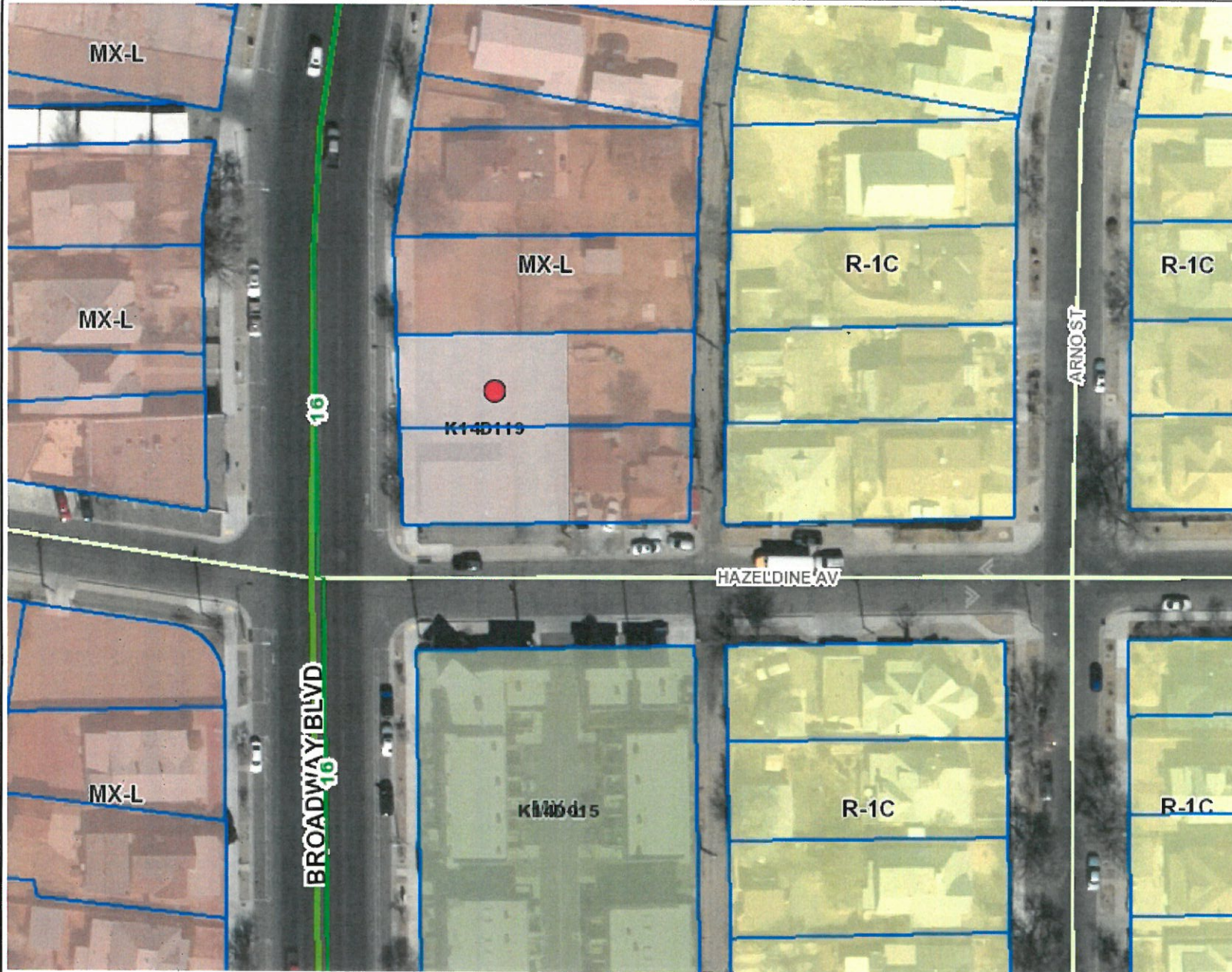


Mojgan Maadandar, E.I.
Associate Engineer, Planning Dept.
Development Review Services

\MM via: email
C: CO Clerk, File



City of Albuquerque



Legend

- Bus Routes
- City Parcels
- Primary Streets
 - Freeway
 - Principal Arterial
 - Minor Arterial
 - Local Streets
- + BN and SF Railroad
- HydroTrans
 - <Null>
 - DETENTION
 - FREE
 - FUTURE STORM DRAIN
 - NOT ASSIGNED
 - RETENTION
- IDO Zoning
 - R-A
 - R-1A
 - R-1B
 - R-1C
 - R-1D
 - R-T
 - R-MC
 - R-ML
 - R-MH
 - MX-T
 - MX-L
 - MX-M
 - MX-H
 - MX-FB-ID
 - MX-FB-FX
 - MX-FB-UD
 - NR-C
 - NR-BP
 - NR-LM
 - NR-GM
 - NR-SU
 - NR-PO-A
 - NR-PO-B
 - NR-PO-C
 - NR-PO-D
 - PD
 - PC
 - UNCL
- Municipal Limits
 - Corrales
 - Edgewood

Notes

150 0 75 150 Feet

WGS_1984_Web_Mercator_Auxiliary_Sphere
9/13/2019 © City of Albuquerque

1: 901

The City of Albuquerque ("City") provides the data on this website as a service to the public. The City makes no warranty, representation, or guaranty as to the content, accuracy, timeliness, or completeness of any of the data provided at this website. Please visit <http://www.cabq.gov/abq-data/abq-data-disclaimer-1> for more information.

THIS MAP IS NOT TO BE USED FOR NAVIGATION