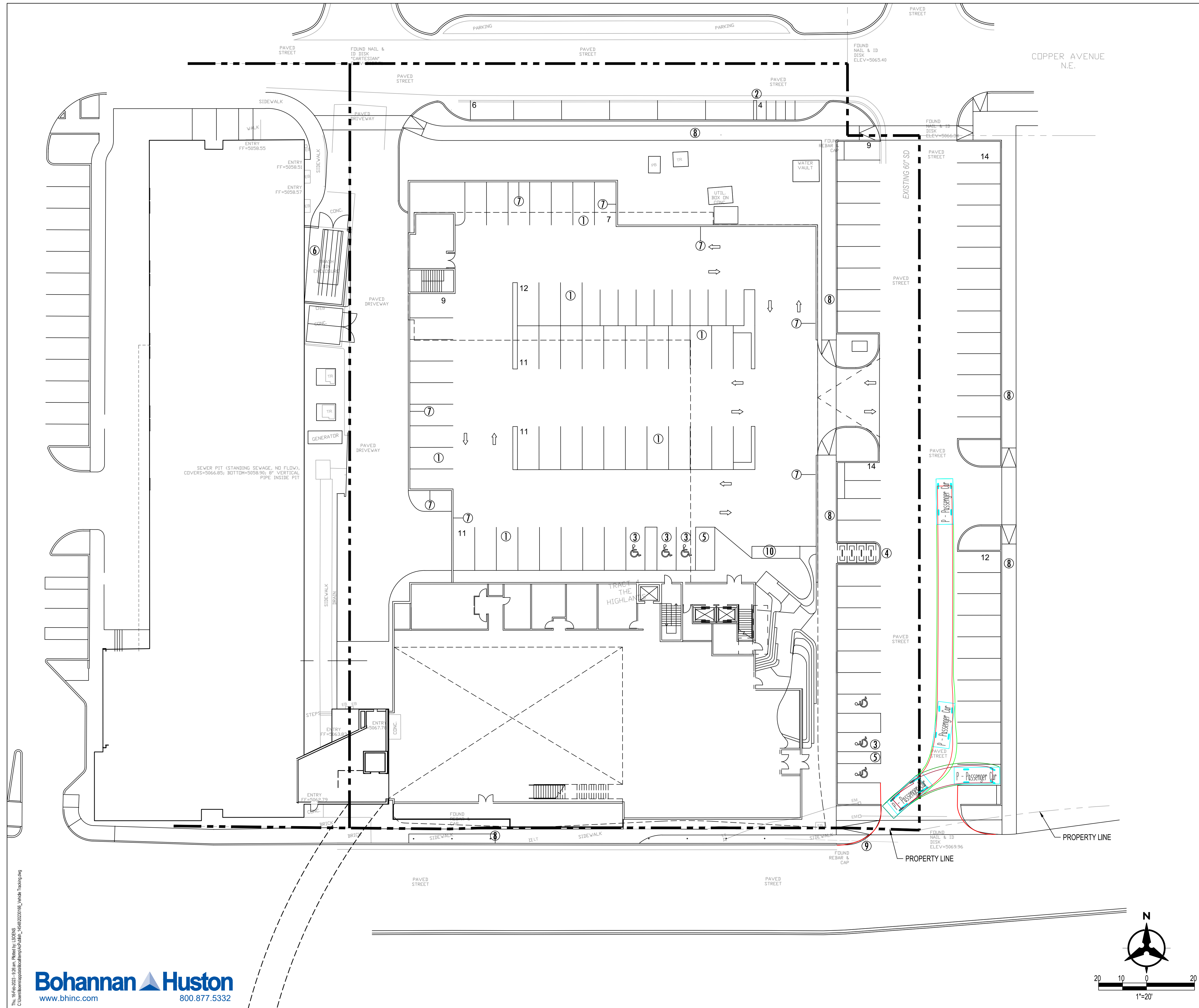
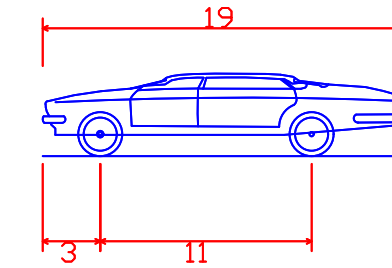


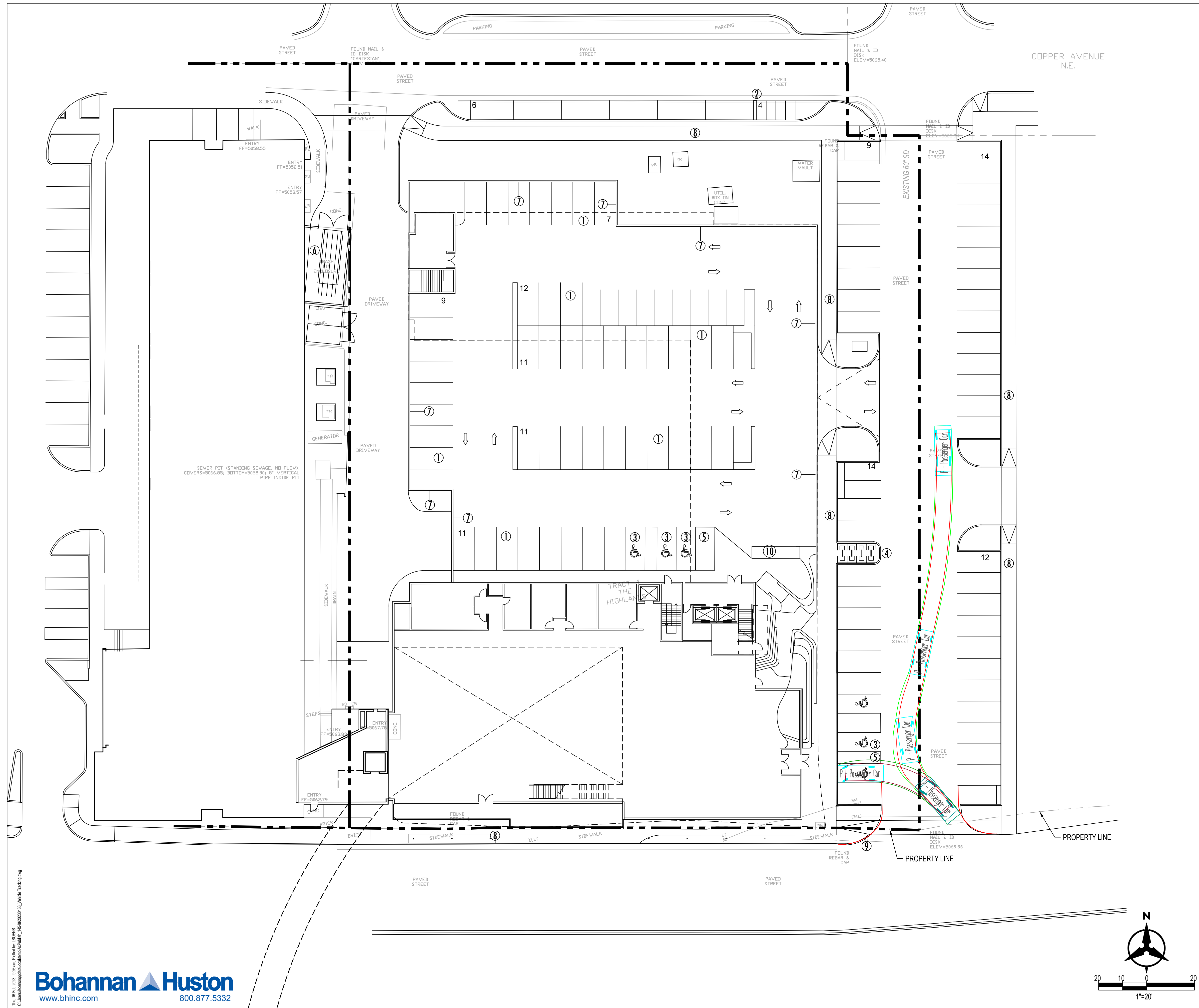
P - Passenger Car
 Overall Length 19.000ft
 Overall Width 7.000ft
 Overall Body Height 4.300ft
 Min Body Ground Clearance 1.115ft
 Track Width 6.000ft
 Lock-to-lock time 4.00s
 Max Steering Angle (Virtual) 31.60°



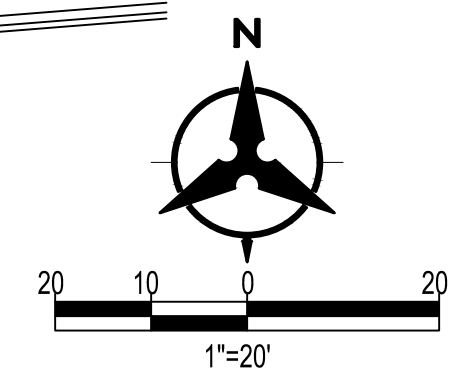
RESIDENCE INN & FOOD HALL			
VEHICLE TRACKING EXHIBIT			
DRAWN BY:	LS	DATE:	2/15/2023
CHECKED BY:	JL	BHI PROJECT NO.	20230166
		SHEET NO.	1



- P - Passenger Car
- Overall Length 19.000ft
- Overall Width 7.000ft
- Overall Body Height 4.300ft
- Min Body Ground Clearance 1.115ft
- Track Width 6.000ft
- Lock-to-lock time 4.00s
- Max Steering Angle (Virtual) 31.60°



RESIDENCE INN & FOOD HALL			
VEHICLE TRACKING EXHIBIT			
DRAWN BY:	LS	DATE:	2/15/2023
CHECKED BY:	JL	BHI PROJECT NO.	20230166
		SHEET NO.	2



Thu, 16-Feb-2023 10:26am. Plotted by: LS/ENS
 C:\Users\lsj\OneDrive\Documents\BHI\20230166_Vehicle Tracking.dwg