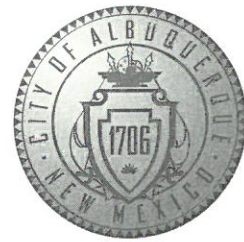


CITY OF ALBUQUERQUE



Planning Department
Suzanne Lubar, Director

Mayor Richard J. Berry

July 8, 2016

Eugenio Valdez, P.E.
Wilson & Company
4900 Lang Ave NE
Rio Rancho, New Mexico 87109

Re: Lincoln Complex Building M Renovations-Phase 1
912 Oak Street
Request for Permanent C.O. - Accepted
Engineer's Stamp dated: 11-11-15 (K15D047B)
Certification dated: 7-7-16

PO Box 1293

Dear Mr. Valdez,

Albuquerque

Based on the Certification received 7/8/2016, the above referenced is acceptable for permanent release of Certificate of Occupancy by Hydrology.

New Mexico 87103

If you have any questions, you can contact me at 924-3695 or Totten Elliott at 924-3982.

www.cabq.gov

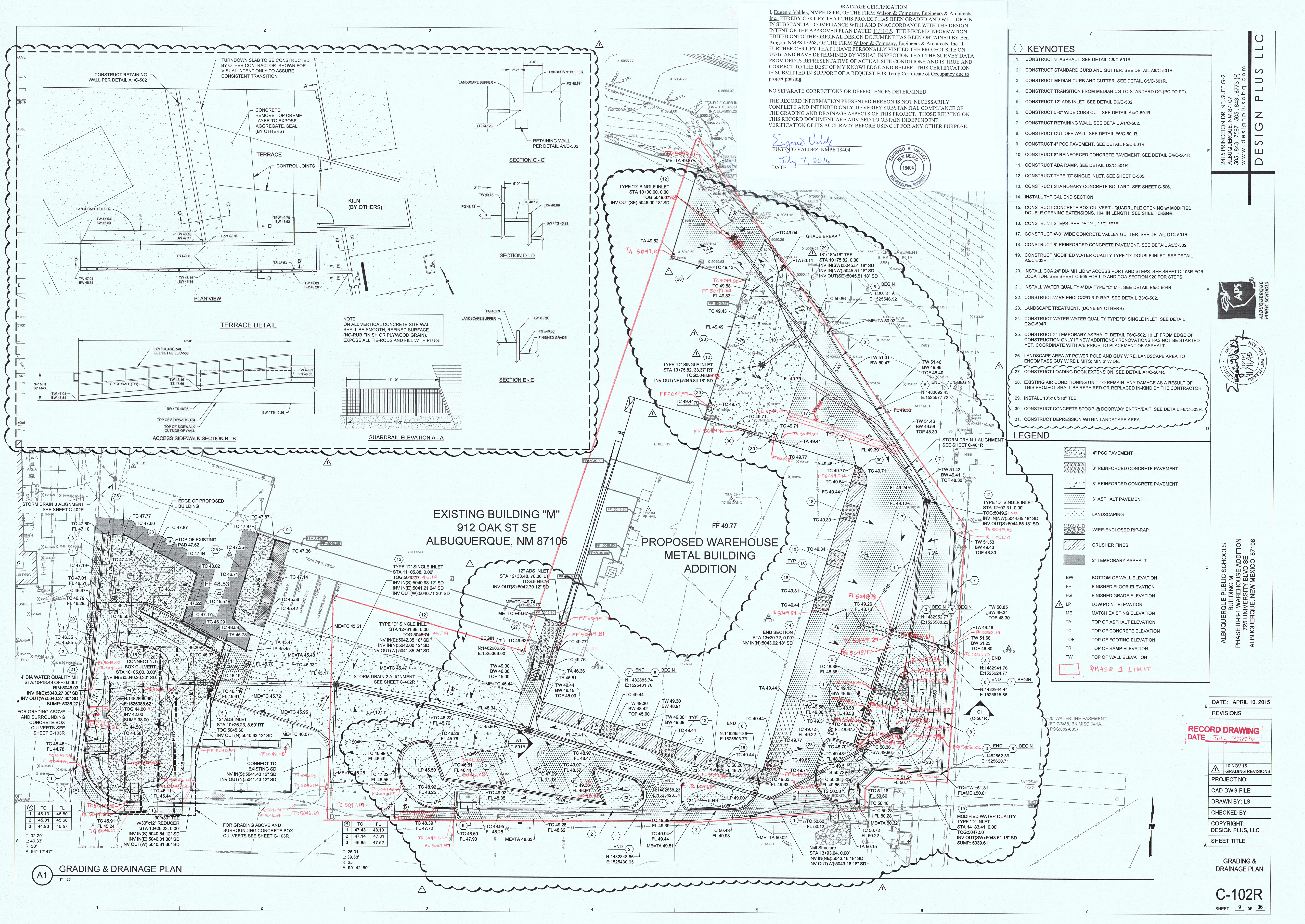
Sincerely,

Abiel Carrillo, P.E.
Principal Engineer, Planning Department
Development and Review Services

TE/AC

C: CO Clerk Cordova, Camille C.; Miranda, Rachel; Sandoval, Darlene M.; Blocker, Lois

APPROVED GRADING PLAN
HAS ENGINEER STAMP
DATE 11-10-15.
DRAINAGE REPORT IS
STAMPED 11-11-15.
AS-BUILT GRADING PLAN
HAS ENGINEER STAMP
DATE 11-11-15-ACCEPTED



DRAINAGE CERTIFICATION
I, Eugenio Valdez, NMPE 18404, OF THE FIRM Wilson & Company, Engineers & Architects, Inc., HEREBY CERTIFY THAT THIS PROJECT HAS BEEN GRADED AND WILL DRAIN IN SUBSTANTIAL COMPLIANCE WITH AND IN ACCORDANCE WITH THE DESIGN INTENT OF THE APPROVED PLAN DATED 11/11/15. THE RECORD INFORMATION EDITED ONTO THE ORIGINAL DESIGN DOCUMENT HAS BEEN OBTAINED BY Ben Aragon, NMPS 15268, OF THE FIRM Wilson & Company, Engineers & Architects, Inc. I FURTHER CERTIFY THAT I HAVE PERSONALLY VISITED THE PROJECT SITE ON 7/7/16 AND HAVE DETERMINED BY VISUAL INSPECTION THAT THE SURVEY DATA PROVIDED IS REPRESENTATIVE OF ACTUAL SITE CONDITIONS AND IS TRUE AND CORRECT TO THE BEST OF MY KNOWLEDGE AND BELIEF. THIS CERTIFICATION IS SUBMITTED IN SUPPORT OF A REQUEST FOR Temp Certificate of Occupancy due to project phasing.
NO SEPARATE CORRECTIONS OR DEFICIENCIES DETERMINED.
THE RECORD INFORMATION PRESENTED HEREON IS NOT NECESSARILY COMPLETE AND INTENDED ONLY TO VERIFY SUBSTANTIAL COMPLIANCE OF THE GRADING AND DRAINAGE ASPECTS OF THIS PROJECT. THOSE RELYING ON THIS RECORD DOCUMENT ARE ADVISED TO OBTAIN INDEPENDENT VERIFICATION OF ITS ACCURACY BEFORE USING IT FOR ANY OTHER PURPOSE.

Eugenio Valdez
EUGENIO VALDEZ, NMPE 18404
July 7, 2016
DATE



- ### KEYNOTES
1. CONSTRUCT 3" ASPHALT. SEE DETAIL C6/C-501R.
 2. CONSTRUCT STANDARD CURB AND GUTTER. SEE DETAIL A6/C-501R.
 3. CONSTRUCT MEDIAN CURB AND GUTTER. SEE DETAIL C5/C-501R.
 4. CONSTRUCT TRANSITION FROM MEDIAN CG TO STANDARD CG (PC TO PT).
 5. CONSTRUCT 12" ADS INLET. SEE DETAIL D6/C-502.
 6. CONSTRUCT 5'-0" WIDE CURB CUT. SEE DETAIL A4/C-501R.
 7. CONSTRUCT RETAINING WALL. SEE DETAIL A1/C-502.
 8. CONSTRUCT CUT-OFF WALL. SEE DETAIL F6/C-501R.
 9. CONSTRUCT 4" PCC PAVEMENT. SEE DETAIL F5/C-501R.
 10. CONSTRUCT 8" REINFORCED CONCRETE PAVEMENT. SEE DETAIL D4/C-501R.
 11. CONSTRUCT ADA RAMP. SEE DETAIL D2/C-501R.
 12. CONSTRUCT TYPE "D" SINGLE INLET. SEE SHEET C-505.
 13. CONSTRUCT STATIONARY CONCRETE BOLLARD. SEE SHEET C-506.
 14. INSTALL TYPICAL END SECTION.
 15. CONSTRUCT CONCRETE BOX CULVERT - QUADRUPLER OPENING w/ MODIFIED DOUBLE OPENING EXTENSIONS. 104' IN LENGTH; SEE SHEET C-504R.
 16. CONSTRUCT STEPS. SEE DETAIL A1/C-502R.
 17. CONSTRUCT 4'-0" WIDE CONCRETE VALLEY GUTTER. SEE DETAIL D1C-501R.
 18. CONSTRUCT 6" REINFORCED CONCRETE PAVEMENT. SEE DETAIL A3/C-502.
 19. CONSTRUCT MODIFIED WATER QUALITY TYPE "D" DOUBLE INLET. SEE DETAIL A5/C-503R.
 20. INSTALL COA 24" DIA MH LID w/ ACCESS PORT AND STEPS. SEE SHEET C-103R FOR LOCATION. SEE SHEET C-505 FOR LID AND COA SECTION 920 FOR STEPS.
 21. INSTALL WATER QUALITY 4' DIA TYPE "C" MH. SEE DETAIL E5/C-504R.
 22. CONSTRUCT WIRE ENCLOSED RIP-RAP. SEE DETAIL B3/C-502.
 23. LANDSCAPE TREATMENT. (DONE BY OTHERS)
 24. CONSTRUCT WATER QUALITY TYPE "D" SINGLE INLET. SEE DETAIL C2/C-504R.
 25. CONSTRUCT 2" TEMPORARY ASPHALT. DETAIL F6/C-502, 10 LF FROM EDGE OF CONSTRUCTION ONLY IF NEW ADDITIONS/ REPAIRATIONS HAS NOT BE STARTED YET. COORDINATE WITH A/E PROJECT FOR PLACEMENT OF ASPHALT.
 26. LANDSCAPE AREA AT POWER POLE AND GUY WIRE. LANDSCAPE AREA TO ENCOMPASS GUY WIRE LIMITS; MIN 2' WIDE.
 27. CONSTRUCT LOADING DOCK EXTENSION. SEE DETAIL A1/C-504R.
 28. EXISTING AIR CONDITIONING UNIT TO REMAIN. ANY DAMAGE AS A RESULT OF THIS PROJECT SHALL BE REPAIRED OR REPLACED IN-KIND BY THE CONTRACTOR.
 29. INSTALL 18"x18"x18" TEE.
 30. CONSTRUCT CONCRETE STOOP @ DOORWAY ENTRY/EXIT. SEE DETAIL F6/C-503R.
 31. CONSTRUCT DEPRESSION WITHIN LANDSCAPE AREA.

- ### LEGEND
- 4" PCC PAVEMENT
 - 6" REINFORCED CONCRETE PAVEMENT
 - 8" REINFORCED CONCRETE PAVEMENT
 - 3" ASPHALT PAVEMENT
 - LANDSCAPING
 - WIRE-ENCLOSED RIP-RAP
 - CRUSHER FINES
 - 2" TEMPORARY ASPHALT
 - BW BOTTOM OF WALL ELEVATION
 - FF FINISHED FLOOR ELEVATION
 - FG FINISHED GRADE ELEVATION
 - LP LOW POINT ELEVATION
 - ME MATCH EXISTING ELEVATION
 - TA TOP OF ASPHALT ELEVATION
 - TC TOP OF CONCRETE ELEVATION
 - TOF TOP OF FOOTING ELEVATION
 - TR TOP OF RAMP ELEVATION
 - TW TOP OF WALL ELEVATION
 - PHASE 1 LIMIT

2415 PRINCETON DR. NE SUITE G-2
ALBUQUERQUE, NM 87107
505.843.7387 505.843.6773 (F)
www.designplusllc.com

DESIGN PLUS LLC

ALBUQUERQUE PUBLIC SCHOOLS
BUILDING M
PHASE II-B-1 WAREHOUSE ADDITION
725 UNIVERSITY BLVD SE
ALBUQUERQUE, NEW MEXICO 87108

DATE: APRIL 10, 2015
REVISIONS
RECORD DRAWING
DATE: JUL 7, 2016

10 NOV 15
GRADING REVISIONS

PROJECT NO:

CAD DWG FILE:

DRAWN BY: LS

CHECKED BY:

COPYRIGHT:
DESIGN PLUS, LLC

SHEET TITLE

GRADING &
DRAINAGE PLAN

C-102R

SHEET 9 OF 36



City of Albuquerque

Planning Department

Development & Building Services Division

DRAINAGE AND TRANSPORTATION INFORMATION SHEET (REV 09/2015)

Project Title: _____ **Building Permit #:** _____ **City Drainage #:** _____

DRB#: _____ **EPC#:** _____ **Work Order#:** _____

Legal Description: _____

City Address: _____

Engineering Firm: _____ **Contact:** _____

Address: _____

Phone#: _____ **Fax#:** _____ **E-mail:** _____

Owner: _____ **Contact:** _____

Address: _____

Phone#: _____ **Fax#:** _____ **E-mail:** _____

Architect: _____ **Contact:** _____

Address: _____

Phone#: _____ **Fax#:** _____ **E-mail:** _____

Other Contact: _____ **Contact:** _____

Address: _____

Phone#: _____ **Fax#:** _____ **E-mail:** _____

Check all that Apply:

DEPARTMENT:

- ☐ HYDROLOGY/ DRAINAGE
☐ TRAFFIC/ TRANSPORTATION
☐ MS4/ EROSION & SEDIMENT CONTROL

TYPE OF SUBMITTAL:

- ☐ ENGINEER/ ARCHITECT CERTIFICATION
- ☐ CONCEPTUAL G & D PLAN
☐ GRADING PLAN
☐ DRAINAGE MASTER PLAN
☐ DRAINAGE REPORT
☐ CLOMR/LOMR
- ☐ TRAFFIC CIRCULATION LAYOUT (TCL)
☐ TRAFFIC IMPACT STUDY (TIS)
☐ EROSION & SEDIMENT CONTROL PLAN (ESC)
- ☐ OTHER (SPECIFY) _____

CHECK TYPE OF APPROVAL/ACCEPTANCE SOUGHT:

- ☐ BUILDING PERMIT APPROVAL
☐ CERTIFICATE OF OCCUPANCY
- ☐ PRELIMINARY PLAT APPROVAL
☐ SITE PLAN FOR SUB'D APPROVAL
☐ SITE PLAN FOR BLDG. PERMIT APPROVAL
☐ FINAL PLAT APPROVAL
☐ SIA/ RELEASE OF FINANCIAL GUARANTEE
☐ FOUNDATION PERMIT APPROVAL
☐ GRADING PERMIT APPROVAL
☐ SO-19 APPROVAL
☐ PAVING PERMIT APPROVAL
☐ GRADING/ PAD CERTIFICATION
☐ WORK ORDER APPROVAL
☐ CLOMR/LOMR
- ☐ PRE-DESIGN MEETING
☐ OTHER (SPECIFY) _____

IS THIS A RESUBMITTAL?: ☐ Yes ☐ No

DATE SUBMITTED: _____ **By:** _____

COA STAFF: _____ ELECTRONIC SUBMITTAL RECEIVED: _____