

CITY OF ALBUQUERQUE



September 7, 2016

Eugene Valdez, P.E.
Wilson & Company
4900 Lang Ave NE
Rio Rancho, New Mexico 87109

**RE: Lincoln Complex Building M Renovations: Training Center
912 Oak St SE
Request for Permanent C.O. - Accepted
Engineers Stamp Date 11/11/15 (K15D047B)
Certification Date 9-6-16**

Dear Mr. Valdez,

Based on the Certification received 9/6/2016, for the above referenced site is acceptable for a release of Certificate of Occupancy by Hydrology.

If you have any questions, please contact me at 924-3986 or Totten Elliott at 924-3982.

PO Box 1293

Sincerely,

Albuquerque

New Mexico 87103

Abiel Carrillo, P.E.
Principal Engineer, Planning Department
Development and Review Services

www.cabq.gov

TE/AC

C: Email,

Cordova, Camille C.; Miranda, Rachel; Sandoval, Darlene M.; Blocker,
Lois

WILSON & COMPANY

4900 Lang Ave NE
Albuquerque, NM 87109
505-348-4000 phone
505-348-4055 fax

Alaska
Arizona
California
Colorado
Florida
Kansas
Missouri
Nebraska
New Mexico
Oklahoma
Texas
Utah

September 6, 2016

Abiel Carrillo, P.E.
Principal Engineer, Planning Department
Development and Review Services
600 2nd St. NW, Suite 201
Albuquerque, NM 87102

RE: 912 Oak St.
Request for Permanent C.O.-Not Accepted
Engineers Stamp Date 11/11/15 (K15D047B)
Certification Date 9-1-16

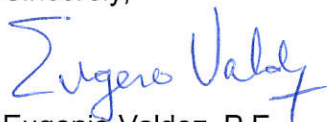
Dear Mr. Carrillo,

Attached is the revised **Lincoln Complex: Training Center** as-built sheets with certification. Revisions have been performed based on your comments from the review letter dated September 2, 2016.

The following is a written response to those comments:

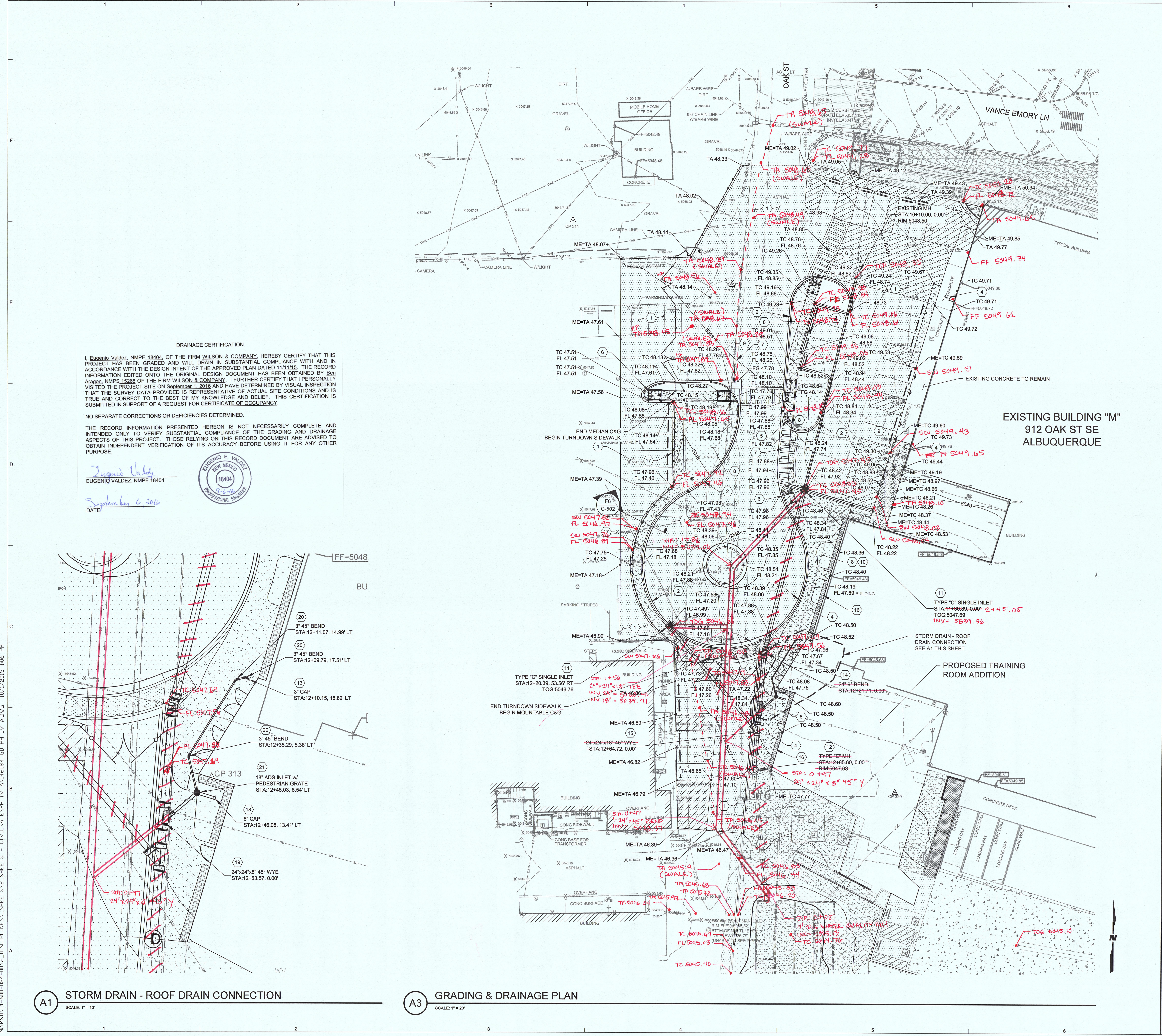
- Drawings for the complete Phase 2 were not included in the submittal. **The Phase 2 as-built drawings from the Lincoln Complex: Warehouse project have been included in the submittal.**
- The Type "E" manhole (note #12) is missing. **The storm drain within the Lincoln Complex: Training Center was modified in order to avoid unforeseen underground utilities. The revised as-built drawing shows the revised layout of the storm drain.**
- It is recommended that the swales be addressed as to not erode the pavement due to ponding that is already evident. Swales do not match approved drawing. **Swales were added after the approved drawings to channelize the runoff and prevent localized ponding. The majority of the site has minimal slope but the swales help direct runoff to the designed inlets. Because the site has been an active construction zone, sand/dirt has accumulated on site. The contractor will be advised to do a sweeping of the asphalt to prevent any ponding. APS will be advised to do continued maintenance on the swales and to look for any potential erosion.**

Sincerely,



Eugenio Valdez, P.E.
Project Engineer
Wilson & Company

Cc: File



GENERAL SHEET NOTES

- IRRIGATION PVC SLEEVES SHALL BE INSTALLED BENEATH CONCRETE CURBS. REFERENCE LANDSCAPE PLANS FOR SPECIFIC LOCATION.
- SEE SHEET C-401 FOR STORM DRAIN PLAN & PROFILE.

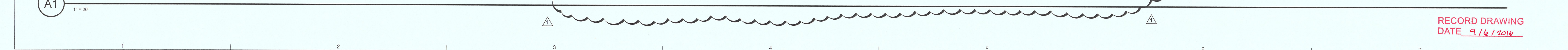
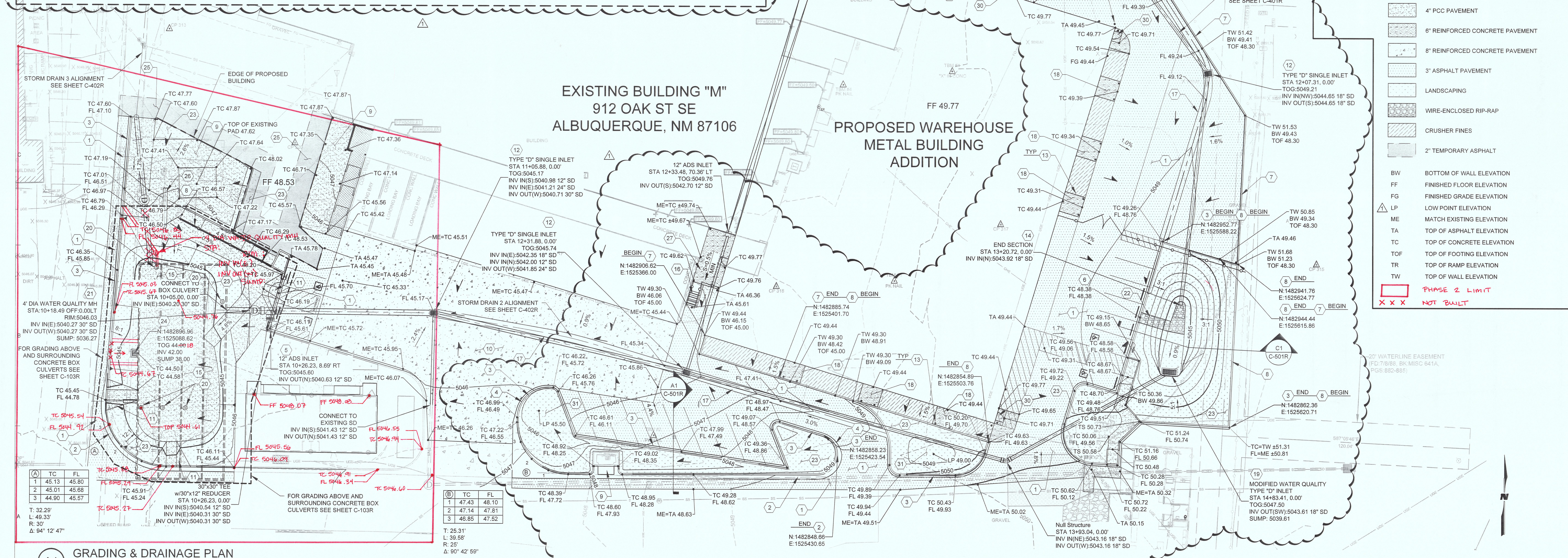
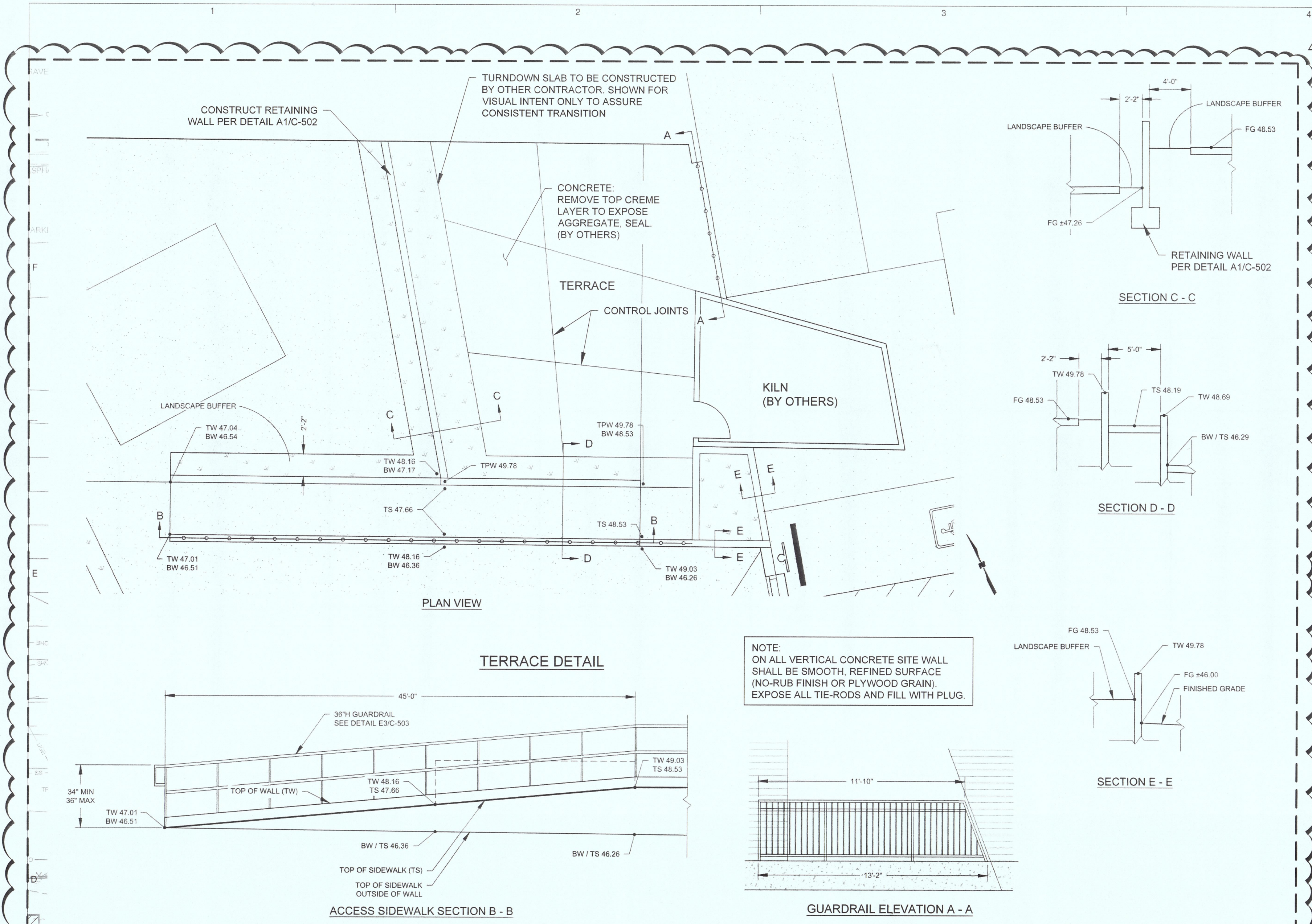
KEYNOTES

- CONSTRUCT 3" ASPHALT. SEE DETAIL A6/C-501.
- CONSTRUCT MEDIAN CURB AND GUTTER. SEE DETAIL D6/C-501.
- CONSTRUCT MOUNTABLE CURB AND GUTTER. SEE DETAIL A5/C-501.
- CONSTRUCT 4" PCC PAVEMENT. SEE DETAIL C6/C-501.
- CONSTRUCT COMBINATION ADA RAMP. SEE DETAIL A2/C-502.
- CONSTRUCT PERPENDICULAR ADA RAMP. SEE DETAIL D6/C-502.
- CONSTRUCT 6'-0" WIDE CONCRETE VALLEY GUTTER. SEE DETAIL F2/C-501.
- INSTALL LANDSCAPING. (BY OTHERS).
- CONSTRUCT 6" REINFORCED CONCRETE PAVEMENT. SEE DETAIL E3/C-501.
- CONSTRUCT TURNDOWN EDGE @ LANDSCAPE AREAS (TYP). SEE DETAIL D4/C-502.
- CONSTRUCT TYPE "C" SINGLE INLET. SEE PLAN & PROFILE SHEET C-401 & SHEET C-503.
- CONSTRUCT TYPE "E" MH. SEE PLAN & PROFILE SHEET C-401 & SHEET C-503.
- INSTALL 3" CAP. CONNECT TO ROOF DRAIN. SEE ARCHITECTURAL PLANS.
- INSTALL 24" 9" BEND. SEE PLAN & PROFILE SHEET C-401.
- INSTALL 24" x 24" x 18" WYE. SEE PLAN & PROFILE SHEET C-401.
- INSTALL RIVER ROCK. (BY OTHERS).
- CONSTRUCT 4" PCC TURNDOWN SIDEWALK. SEE DETAIL F6/C-502.
- INSTALL 8" CAP. CONNECT TO ROOF DRAIN. SEE ARCHITECTURAL PLANS.
- INSTALL 24" x 24" x 8" WYE. SEE PLAN & PROFILE SHEET C-401.
- INSTALL 3" 45" BEND. SEE PLAN & PROFILE SHEET C-401.
- INSTALL 18" ADS INLET w/ PEDESTRIAN GRATE. SEE DETAIL E1/C-502. SEE PLAN & PROFILE SHEET C-401.

LEGEND

| | |
|-----|----------------------------|
| | 4" PCC CONCRETE |
| | 6" PCC REINFORCED CONCRETE |
| | 3" ASPHALT PAVEMENT |
| | LANDSCAPING (BY OTHERS) |
| | RIVER ROCK (BY OTHERS) |
| FF | FINISHED FLOOR ELEVATION |
| FG | FINISHED GRADE ELEVATION |
| FL | FLOWLINE ELEVATION |
| ME | MATCH EXISTING ELEVATION |
| RIM | RIM ELEVATION |
| TA | TOP OF ASPHALT ELEVATION |
| TC | TOP OF CONCRETE ELEVATION |
| TOG | TOP OF GRATE ELEVATION |

/// NOT BUILT



DRAINAGE CERTIFICATION

I, **Eugenio Valdez**, NMPE 18404, OF THE FIRM WILSON & COMPANY, HEREBY CERTIFY THAT THIS PROJECT HAS BEEN GRADED AND WILL DRAIN IN SUBSTANTIAL COMPLIANCE WITH AND IN ACCORDANCE WITH THE DESIGN INTENT OF THE APPROVED PLAN DATED 11/11/15. THE RECORD INFORMATION EDITED ONTO THE ORIGINAL DESIGN DOCUMENT HAS BEEN OBTAINED BY ME PERSONALLY, AND I HAVE DETERMINED BY VISUAL INSPECTION THAT THE SURVEY DATA PROVIDED IS REPRESENTATIVE OF ACTUAL SITE CONDITIONS AND IS TRUE AND CORRECT TO THE BEST OF MY KNOWLEDGE AND BELIEF. THIS CERTIFICATION IS SUBMITTED IN SUPPORT OF A REQUEST FOR CERTIFICATE OF OCCUPANCY.

NO SEPARATE CORRECTIONS OR DEFICIENCIES DETERMINED.

THE RECORD INFORMATION PRESENTED HEREON IS NOT NECESSARILY COMPLETE AND INTENDED ONLY TO VERIFY SUBSTANTIAL COMPLIANCE OF THE GRADING AND DRAINAGE ASPECTS OF THIS PROJECT. THOSE RELYING ON THIS RECORD DOCUMENT ARE ADVISED TO OBTAIN INDEPENDENT VERIFICATION OF ITS ACCURACY BEFORE USING IT FOR ANY OTHER PURPOSE.

Eugenio Valdez
NMPE 18404
Professional Engineer
DATE: September 6, 2016

- KEYNOTES**
- CONSTRUCT 3" ASPHALT. SEE DETAIL C5/C-501R.
 - CONSTRUCT STANDARD CURB AND GUTTER. SEE DETAIL A6/C-501R.
 - CONSTRUCT MEDIAN CURB AND GUTTER. SEE DETAIL C5/C-501R.
 - CONSTRUCT TRANSITION FROM MEDIAN CG TO STANDARD CG (PC TO PT).
 - CONSTRUCT 12" ADS INLET. SEE DETAIL D6/C-502.
 - CONSTRUCT 5'-0" WIDE CURB OUT. SEE DETAIL A4/C-501R.
 - CONSTRUCT RETAINING WALL. SEE DETAIL A1/C-502.
 - CONSTRUCT CUT-OFF WALL. SEE DETAIL F6/C-501R.
 - CONSTRUCT 4" PCC PAVEMENT. SEE DETAIL F5/C-501R.
 - CONSTRUCT 8" REINFORCED CONCRETE PAVEMENT. SEE DETAIL D4/C-501R.
 - CONSTRUCT ADA RAMP. SEE DETAIL D2/C-501R.
 - CONSTRUCT TYPE "D" SINGLE INLET. SEE SHEET C-505.
 - CONSTRUCT STATIONARY CONCRETE BOLLARD. SEE SHEET C-506.
 - INSTALL TYPICAL END SECTION.
 - CONSTRUCT CONCRETE BOX CULVERT - QUADRUPLE OPENING w/ MODIFIED DOUBLE OPENING EXTENSIONS. 104" IN LENGTH. SEE SHEET C-504R.
 - CONSTRUCT STEPS. SEE DETAIL A1/C-503R.
 - CONSTRUCT 4'-0" WIDE CONCRETE VALLEY GUTTER. SEE DETAIL D1/C-501R.
 - CONSTRUCT 6" REINFORCED CONCRETE PAVEMENT. SEE DETAIL A3/C-502.
 - CONSTRUCT MODIFIED WATER QUALITY TYPE "D" DOUBLE INLET. SEE DETAIL A5/C-503R.
 - INSTALL COA 24" DIA MH LID w/ ACCESS PORT AND STEPS. SEE SHEET C-103R FOR LOCATION. SEE SHEET C-505 FOR LID AND COA SECTION 920 FOR STEPS.
 - INSTALL WATER QUALITY 4' DIA TYPE "C" MH. SEE DETAIL E5/C-504R.
 - CONSTRUCT WIRE ENCLOSED RIP-RAP. SEE DETAIL B3/C-502.
 - LANDSCAPE TREATMENT. (DONE BY OTHERS)
 - CONSTRUCT WATER QUALITY TYPE "D" SINGLE INLET. SEE DETAIL C2/C-504R.
 - CONSTRUCT 2" TEMPORARY ASPHALT. DETAIL F6/C-502. 10 LF FROM EDGE OF CONSTRUCTION ONLY IF NEW ADDITIONS / RENOVATIONS HAS NOT BE STARTED YET. COORDINATE WITH A/E PRIOR TO PLACEMENT OF ASPHALT.
 - LANDSCAPE AREA AT POWER POLE AND GUY WIRE. LANDSCAPE AREA TO ENCOMPASS GUY WIRE LIMITS. MIN 2' WIDE.
 - CONSTRUCT LOADING DOCK EXTENSION. SEE DETAIL A1/C-504R.
 - EXISTING AIR CONDITIONING UNIT TO REMAIN. ANY DAMAGE AS A RESULT OF THIS PROJECT SHALL BE REPAIRED OR REPLACED IN-KIND BY THE CONTRACTOR.
 - INSTALL 18"x18"x1" TEE.
 - CONSTRUCT CONCRETE STOOP @ DOORWAY ENTRY/EXIT. SEE DETAIL F6/C-503R.
 - CONSTRUCT DEPRESSION WITHIN LANDSCAPE AREA.

DESIGN PLUS LLC

2415 PRINCETON DR. NE. SUITE G-2
ALBUQUERQUE, NM 87107
505.843.7587 505.843.673 (F)
www.designplusllc.com

ALBUQUERQUE PUBLIC SCHOOLS

ALBUQUERQUE PUBLIC SCHOOLS
BUILDING M
PHASE III-B-1 WAREHOUSE ADDITION
725 UNIVERSITY BLVD SE
ALBUQUERQUE, NEW MEXICO 87108

DATE: APRIL 10, 2015

REVISIONS

10 NOV 15
GRADING REVISIONS

PROJECT NO:

CAD DWG FILE:

DRAWN BY: LS

CHECKED BY:

COPYRIGHT:
DESIGN PLUS, LLC

SHEET TITLE

GRADING & DRAINAGE PLAN

C-102R

SHEET 9 OF 36



City of Albuquerque

Planning Department

Development & Building Services Division

DRAINAGE AND TRANSPORTATION INFORMATION SHEET (REV 09/2015)

Project Title: _____ **Building Permit #:** _____ **City Drainage #:** _____

DRB#: _____ **EPC#:** _____ **Work Order#:** _____

Legal Description: _____

City Address: _____

Engineering Firm: _____ **Contact:** _____

Address: _____

Phone#: _____ **Fax#:** _____ **E-mail:** _____

Owner: _____ **Contact:** _____

Address: _____

Phone#: _____ **Fax#:** _____ **E-mail:** _____

Architect: _____ **Contact:** _____

Address: _____

Phone#: _____ **Fax#:** _____ **E-mail:** _____

Other Contact: _____ **Contact:** _____

Address: _____

Phone#: _____ **Fax#:** _____ **E-mail:** _____

Check all that Apply:

DEPARTMENT:

- ☐ HYDROLOGY/ DRAINAGE
☐ TRAFFIC/ TRANSPORTATION
☐ MS4/ EROSION & SEDIMENT CONTROL

TYPE OF SUBMITTAL:

- ☐ ENGINEER/ ARCHITECT CERTIFICATION
- ☐ CONCEPTUAL G & D PLAN
☐ GRADING PLAN
☐ DRAINAGE MASTER PLAN
☐ DRAINAGE REPORT
☐ CLOMR/LOMR
- ☐ TRAFFIC CIRCULATION LAYOUT (TCL)
☐ TRAFFIC IMPACT STUDY (TIS)
☐ EROSION & SEDIMENT CONTROL PLAN (ESC)
- ☐ OTHER (SPECIFY) _____

CHECK TYPE OF APPROVAL/ACCEPTANCE SOUGHT:

- ☐ BUILDING PERMIT APPROVAL
☐ CERTIFICATE OF OCCUPANCY
- ☐ PRELIMINARY PLAT APPROVAL
☐ SITE PLAN FOR SUB'D APPROVAL
☐ SITE PLAN FOR BLDG. PERMIT APPROVAL
☐ FINAL PLAT APPROVAL
☐ SIA/ RELEASE OF FINANCIAL GUARANTEE
☐ FOUNDATION PERMIT APPROVAL
☐ GRADING PERMIT APPROVAL
☐ SO-19 APPROVAL
☐ PAVING PERMIT APPROVAL
☐ GRADING/ PAD CERTIFICATION
☐ WORK ORDER APPROVAL
☐ CLOMR/LOMR
- ☐ PRE-DESIGN MEETING
☐ OTHER (SPECIFY) _____

IS THIS A RESUBMITTAL?: ☐ Yes ☐ No

DATE SUBMITTED: _____ **By:** _____

COA STAFF: _____ ELECTRONIC SUBMITTAL RECEIVED: _____