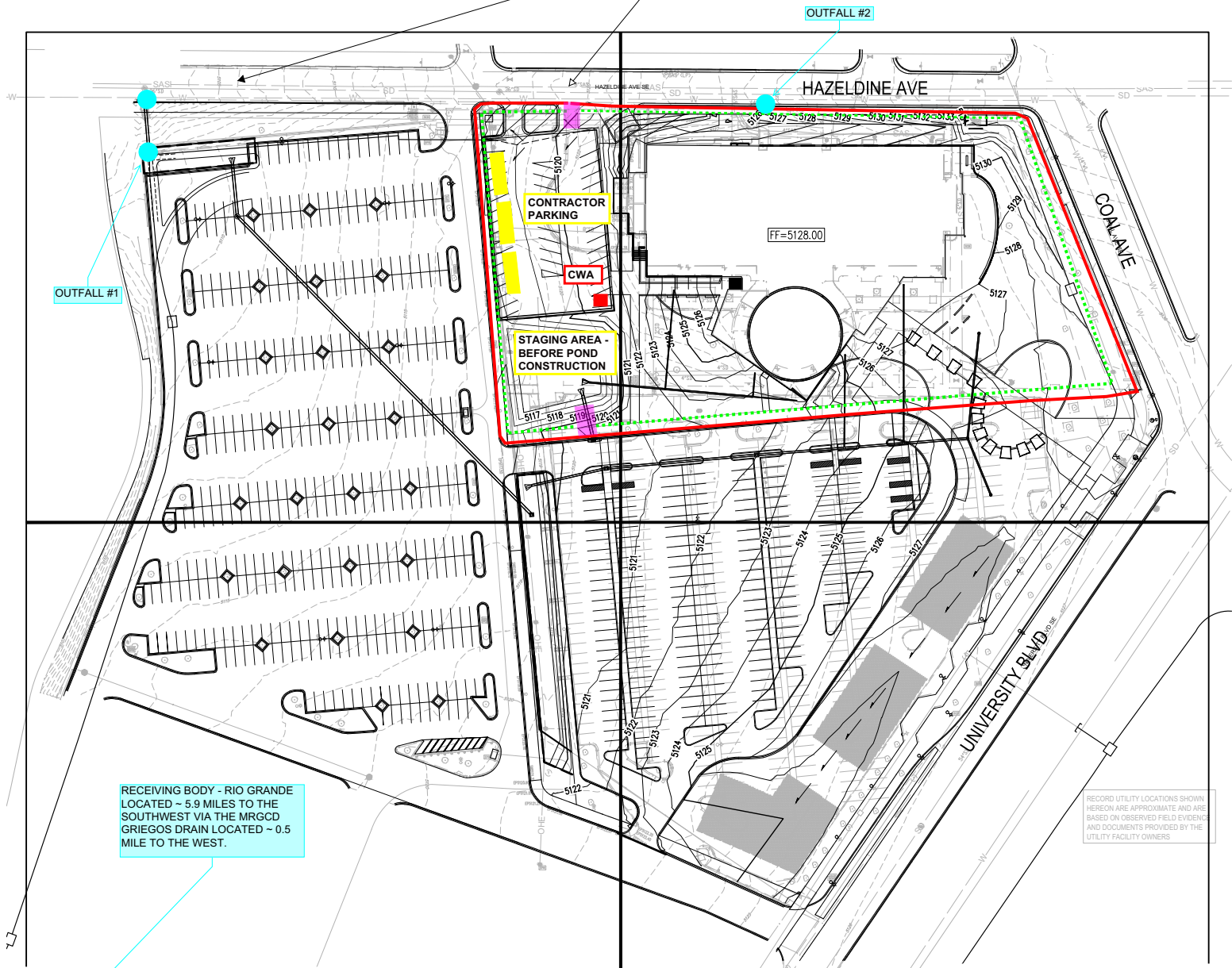


CNM SMITH BRASHER HALL AND RENOVATION EROSION AND SEDIMENT CONTROL PLAN PHASE 1 - DEMOLITION

TOTAL ACRES = 7.0
DISTURBED ACRES = 5.1
REFER TO SITE SWPPP FOR ADDITIONAL COMPLIANCE REQUIREMENTS. REFER TO ESC BMP DETAILS FOR INSTALLATION REQUIREMENTS.

WHEN WORKING IN THE CITY ROW, PREVENT DIRT FROM GETTING INTO STREET. SWEEP STREET AS NEEDED IF ANY SOIL ACCUMULATES ON CITY SURFACES DUE TO CONSTRUCTION ACTIVITIES



RECEIVING BODY - RIO GRANDE
LOCATED ~ 5.9 MILES TO THE
SOUTHWEST VIA THE MRGCD
GRIEGOS DRAIN LOCATED ~ 0.5
MILE TO THE WEST.

RECORD UTILITY LOCATIONS SHOWN
HEREON ARE APPROXIMATE AND ARE
BASED ON OBSERVED FIELD EVIDENCE
AND DOCUMENTS PROVIDED BY THE
UTILITY FACILITY OWNERS

EROSION CONTROL/ENVIRONMENTAL PROTECTION/STORM WATER POLLUTION PREVENTION PLAN WATER AND WASTEWATER GENERAL NOTES

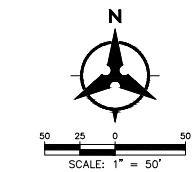
1. THE CONTRACTOR SHALL BE RESPONSIBLE FOR FULFILLING ALL NECESSARY NATIONAL POLLUTANT DISCHARGE ELIMINATION SYSTEM (NPDES) REQUIREMENTS INCLUDING, BUT NOT LIMITED TO, OBTAINING AN NPDES PERMIT PRIOR TO CONSTRUCTION, FILLING OUT THE NOTICE OF INTENT (NOI) APPLICATION, AND FILLING OUT THE NOTICE OF TERMINATION (NOT) APPLICATION. THE CONTRACTOR SHALL ALSO BE RESPONSIBLE FOR THE IMPLEMENTATION OF AND INSPECTION REPORTS FOR THE STORM WATER POLLUTION PREVENTION PLAN (SWPPP). THE CONTRACTOR SHALL SUBMIT THE SWPPP WITH THE PROPOSED CONSTRUCTION STAGING AREA AND TEMPORARY SANITARY FACILITIES CLEARLY SHOWN. ANY CHECK DAMS, SILT FENCES, OR OTHER BEST MANAGEMENT PRACTICES (BMPs) THAT ARE REQUIRED IN THE APPROVED SWPPP SHALL BE INCLUDED IN AND ARE INCIDENTAL TO THE SWPPP BID AMOUNT.
2. THE CONTRACTOR SHALL MAINTAIN A COPY OF THE APPROVED SWPPP ON-SITE AT ALL TIMES, AND SHALL COMPLY WITH THE REQUIREMENTS INDICATED ON THAT PLAN.
3. THE CONTRACTOR SHALL CONFORM TO ALL CITY, COUNTY, STATE AND FEDERAL DUST AND EROSION CONTROL REGULATIONS. THE CONTRACTOR SHALL PREPARE AND OBTAIN ANY NECESSARY DUST OR EROSION CONTROL PERMITS FROM THE REGULATORY AGENCIES.
4. THE CONTRACTOR SHALL EITHER PROMPTLY REMOVE ANY MATERIAL EXCAVATED WITHIN THE PUBLIC RIGHT-OF-WAY OR INSTALL BMPs IDENTIFIED IN THE APPROVED SWPPP TO PREVENT DISCHARGE OF EXCAVATED MATERIAL WITHIN THE PUBLIC RIGHT-OF-WAY DURING A RAIN OR WIND EVENT.
5. THE CONTRACTOR SHALL IMPLEMENT THE APPROVED SWPPP AND ENSURE THAT NO SOIL ERODES FROM THE SITE INTO PUBLIC RIGHT-OF-WAY OR ONTO PRIVATE PROPERTY.
6. THE CONTRACTOR SHALL MITIGATE EROSION OF TEMPORARY OR PERMANENT DIRT SWALES BY INSTALLING BMPs IDENTIFIED IN THE APPROVED SWPPP IN THE SWALES PERPENDICULAR TO THE DIRECTION OF FLOW, AND AT INTERVALS AS SPECIFIED IN THE SWPPP.

7. CONSTRUCTION AREAS SHALL BE WATERED FOR DUST CONTROL IN COMPLIANCE WITH GOVERNMENT ORDINANCES. THE CONTRACTOR SHALL BE RESPONSIBLE FOR LOCATING AND SUPPLYING WATER AS REQUIRED. WATERING, AS REQUIRED FOR CONSTRUCTION AND DUST CONTROL, SHALL BE CONSIDERED INCIDENTAL TO CONSTRUCTION AND NO MEASUREMENT OR PAYMENT SHALL BE MADE THEREFOR.
8. ANY AREAS DISTURBED BY CONSTRUCTION AND NOT COVERED BY LANDSCAPING OR AN IMPERVIOUS SURFACE SHALL BE REVEGETATED WITH NATIVE GRASS SEEDING. WHEN CONSTRUCTION ACTIVITIES CEASE AND EARTH DISTURBING ACTIVITIES WILL NOT RESUME WITHIN 14 DAYS, STABILIZATION MEASURES MUST BE INITIATED, UNLESS INDICATED OTHERWISE ON THESE PLANS OR ON THE LANDSCAPING PLAN. NATIVE GRASS SEEDING SHALL BE SEEDING PER SECTION 1012 OF THE NEW MEXICO STANDARD SPECIFICATIONS FOR PUBLIC WORKS CONSTRUCTION, APWA NM CHARTER, LATEST EDITION.
9. ALL WASTE PRODUCTS FROM THE CONSTRUCTION SITE, INCLUDING ITEMS DESIGNATED FOR REMOVAL, CONSTRUCTION WASTE, CONSTRUCTION EQUIPMENT WASTE PRODUCTS (OIL, GAS, TIRES, ETC.) GARBAGE, GRUBBING, EXCESS CUT MATERIAL, VEGETATIVE DEBRIS, ETC. SHALL BE APPROPRIATELY DISPOSED OF OFF-SITE AT NO ADDITIONAL COST TO THE OWNER. IT SHALL BE THE CONTRACTOR'S RESPONSIBILITY TO OBTAIN PERMITS REQUIRED TO HAUL OR DISPOSE OF WASTE PRODUCTS. IT SHALL BE THE CONTRACTOR'S RESPONSIBILITY TO ENSURE THAT THE WASTE DISPOSAL SITE COMPLIES WITH GOVERNMENT REGULATIONS REGARDING THE ENVIRONMENT, ENDANGERED SPECIES, AND ARCHAEOLOGICAL RESOURCES.
10. THE CONTRACTOR SHALL BE RESPONSIBLE FOR THE CLEANUP AND REPORTING OF SPILLS OF HAZARDOUS MATERIALS ASSOCIATED WITH THE CONSTRUCTION SITE. HAZARDOUS MATERIALS INCLUDE GASOLINE, DIESEL FUEL, MOTOR OIL, SOLVENTS, CHEMICALS, PAINTS, ETC. WHICH MAY BE A THREAT TO THE ENVIRONMENT. THE CONTRACTOR SHALL REPORT THE DISCOVERY OF PAST OR PRESENT SPILLS TO THE NEW MEXICO ENVIRONMENT DEPARTMENT EMERGENCY RESPONSE TEAM AT 505-827-9329.

11. THE CONTRACTOR SHALL COMPLY WITH ALL APPLICABLE REGULATIONS CONCERNING SURFACE AND UNDERGROUND WATER. CONTACT WITH SURFACE WATER BY CONSTRUCTION EQUIPMENT AND PERSONNEL SHALL BE MINIMIZED. EQUIPMENT MAINTENANCE AND REFUELING OPERATIONS SHALL BE PERFORMED IN AN ENVIRONMENTALLY SAFE MANNER IN COMPLIANCE WITH GOVERNMENT REGULATIONS.
12. THE CONTRACTOR SHALL COMPLY WITH ALL APPLICABLE REGULATIONS CONCERNING CONSTRUCTION NOISE AND HOURS OF OPERATION.
13. WHERE STORM INLETS ARE SUSCEPTIBLE TO INFLOW OF SILT OR DEBRIS FROM CONSTRUCTION ACTIVITIES, PROTECTION SHALL BE PROVIDED ON THEIR UPSTREAM SIDE UTILIZING BMPs IDENTIFIED IN THE APPROVED SWPPP.

- SWPPP LEGEND**
- PERMITTED AREA
 - PERIMETER BMP
 - INLET PROTECTION
 - CWA - CONCRETE WASHOUT
 - VTC - CONSTRUCTION ENTRANCE
 - SANITARY TOILETS
 - CONSTRUCTION TRAILER
 - DUMPSTER
 - SEDIMENT BASIN (USE FUTURE RETENTION POND AS BASIN, MONITOR FOR MAINTENANCE)
 - FLOW DIRECTION

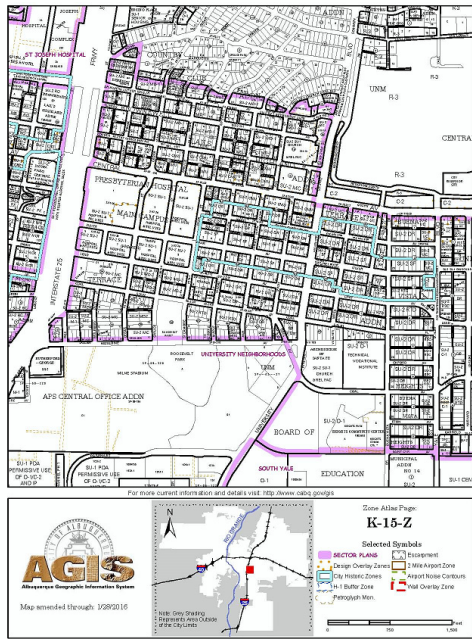
LEGEND



- PROPERTY LINE
- LIMITS OF GRADING
- EXISTING INDEX CONTOUR
- EXISTING INTERMEDIATE CONTOUR
- EXISTING GROUND SPOT ELEVATION
- PROPOSED INDEX CONTOUR
- PROPOSED INTERMEDIATE CONTOUR
- PROPOSED FINISHED GRADE SPOT ELEVATION
- TO=TOP OF CURB, FL=FLOW LINE, TS=TOP OF SIDEWALK, TH=TOP OF GRADE, FGH=FINISH GROUND HIGH, FGL=FINISH GROUND LOW
- PROPOSED CURB & GUTTER
- DIRECTION OF FLOW
- WATER BLOCK/GRADE BREAK
- PROPOSED STORM DRAIN LINE
- PROPOSED STORM DRAIN MANHOLE
- PROPOSED STORM DRAIN INLETS



505-433-3693
DATE: 3/16/16 REV. 4-27-16



fbt | architects
MAIL: 6501 Americas Plaza NE., Ste. 300 PHO: 505.883.5200
Albuquerque, NM 87110 FAX: 505.884.5390
WEB: www.fbtarch.com

CONSULTANT



CNM SMITH BRASHER HALL

50% CONSTRUCTION DOCUMENTS

717 UNIVERSITY BLVD. SE
ALBUQUERQUE, NM 87106

JANUARY 18, 2016

MARK	DATE	DESCRIPTION
ISSUE:		
DATE:		
PROJECT NO:	--	
CAD DWG FILE:	20160308P_C101.dwg	
DRAWN BY:	BFW	
CHECKED BY:	JLM	

SHEET TITLE

EROSION AND SEDIMENT CONTROL PLAN

ESC 101