

GENERAL NOTES

- A. ALL FIRE LANES ARE A MINIMUM OF 28' WIDE.  
B. ALL FIRE LANES DESIGNED TO SUPPORT THE 75,000LB FIRE APPARATUS.  
C. ALL FIRE LANES WILL BE DESIGNED TO BE LESS THAN 10% LONGITUDINAL SLOPE.  
D. SECURITY GATES (PERSONNEL AT BLDG ENTRANCES) CAN BE CONTROLLED BY KEYS OR ACCESS CODES LOCATED WITHIN KNOX BOXES.  
E. PREMISE IDENTIFICATION WILL BE ADDED PER CITY OF ALBUQUERQUE FIRE DEPARTMENT REQUIREMENTS.  
F. ACCESS AND LOADING ZONES WILL BE IDENTIFIED IN THE FIELD PER DIRECTION FROM THE CITY OF ALBUQUERQUE FIRE DEPARTMENT.  
G. VEHICLES OR OBSTRUCTIONS SHALL NOT BE LOCATED WITHIN 15' OF A FIRE HYDRANT OR 5' OF THE FDC.  
H. THERE WILL BE A TOTAL OF 13 FIRE HYDRANTS (MINIMUM) SURROUNDING EACH BUILDING ON THE SITE. PER APPENDIX C, OF IFC FOR FIRE FLOWS LESS THAN 3,375 GPM THE SPACING BETWEEN FIRE HYDRANTS CAN BE 600' AVERAGE. ACTUAL AVERAGE SPACING FOR THIS SITE IS 475'.  
I. BUILDING HEIGHT TO TOP OF PARAPET 25'.

BUILDING INFORMATION

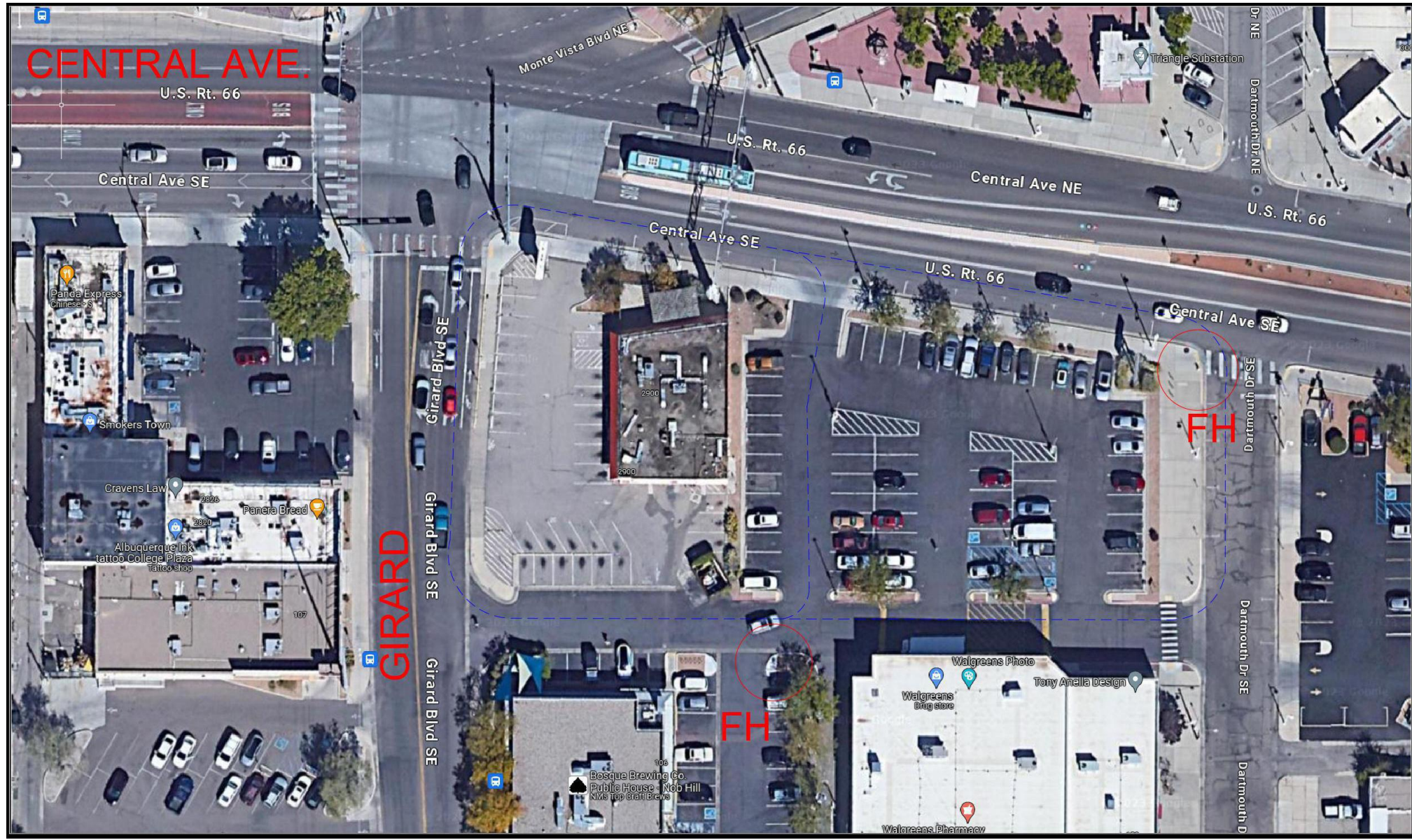
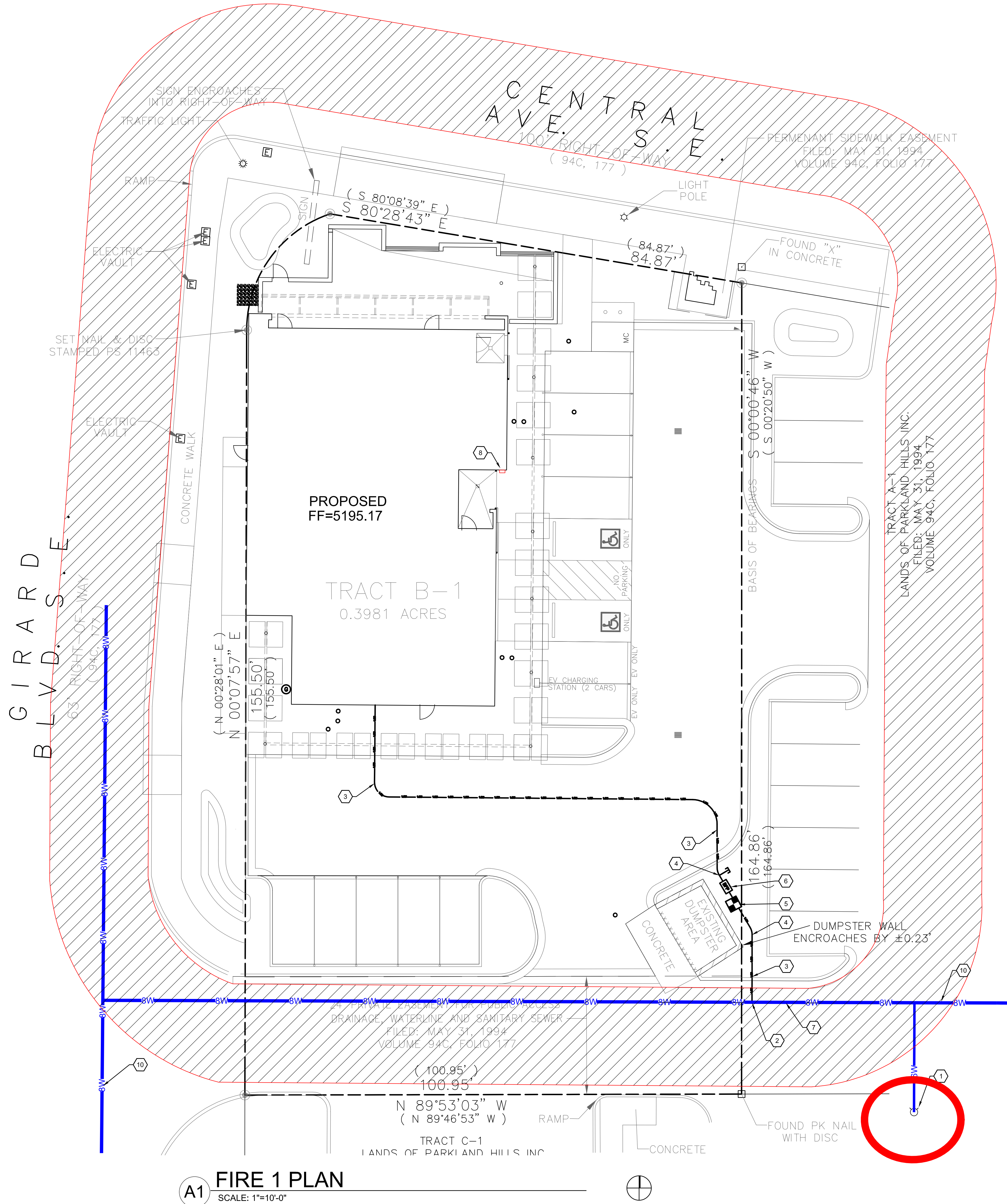
A-3 AND M-1 MIXED OCCUPANCY BUILDING. NON-SPRINKLED, TYPE II-B CONSTRUCTION. BUILDING IS 3,685 SF, PLUS ROOF TOP PATIO.  
COFFEE SHOP A-3  
MERCANTILE M-1  
INTERNATIONAL FIRE CODE 2015, APPENDIX B (TYPICAL BLDG)  
FIRE FLOW PER IFC TABLE B105.1(2) IS 1,500 GPM (NON SPRINKLED BUILDING)  
INTERNATIONAL FIRE CODE 2015, APPENDIX C  
SPACING AND NUMBER OF HYDRANTS FOR PROPOSAL BUILDING PER TABLE C102.1  
MINIMUM NUMBER OF HYDRANTS = 1  
AVERAGE SPACING BETWEEN HYDRANTS = 500'  
MAXIMUM DISTANCE FROM ANY POINT ON FIRE LANE TO HYDRANT = 250'  
PERIMETER ROAD CONTAINS 2 HYDRANTS OVER A TRAVEL LENGTH OF 994'. AVERAGE SPACING IS 497'.



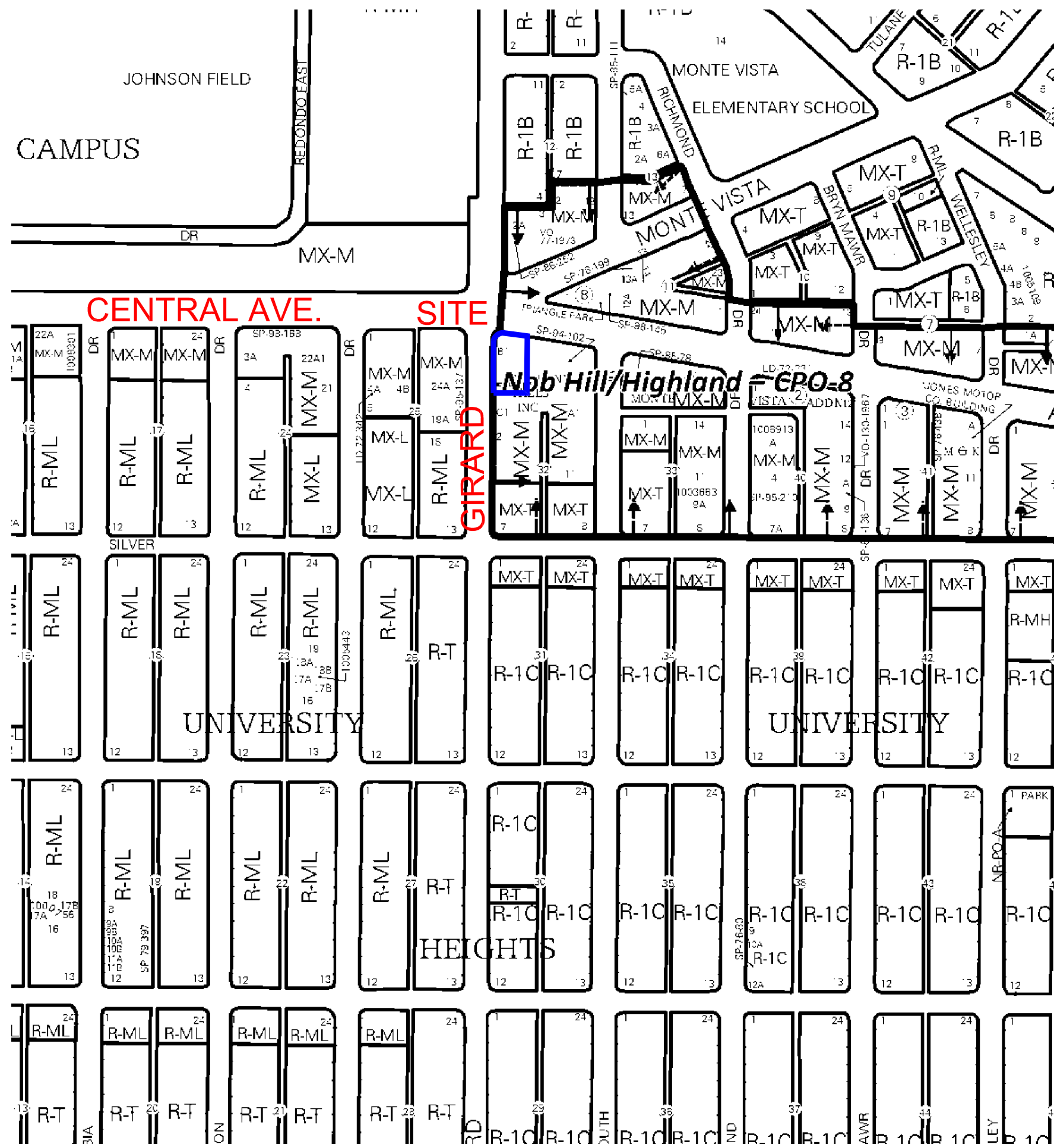
ALBUQUERQUE FIRE MARSHAL'S  
DIVISION OFFICE PLANS  
CHECKING DIVISION  
**PERMIT**  
PERMIT NUMBER: FIRE-1-23-01688  
APPROVED DATE: 11/28/23  
**APPROVED**  
THESE CONSTRUCTION DOCUMENTS WERE REVIEWED AND APPROVED BY THE ALBUQUERQUE FIRE MARSHAL'S OFFICE IN ACCORDANCE WITH THE CITY ORDINANCE, THE INTERNATIONAL FIRE CODE, AND NFPA STANDARDS. THIS PERMIT IS VALID FOR 90 DAYS. FINAL INSPECTION IS REQUIRED.  
FIRE FLOW: 1750 GPM, 1 HYDRANT, II-B



CONSULTANT



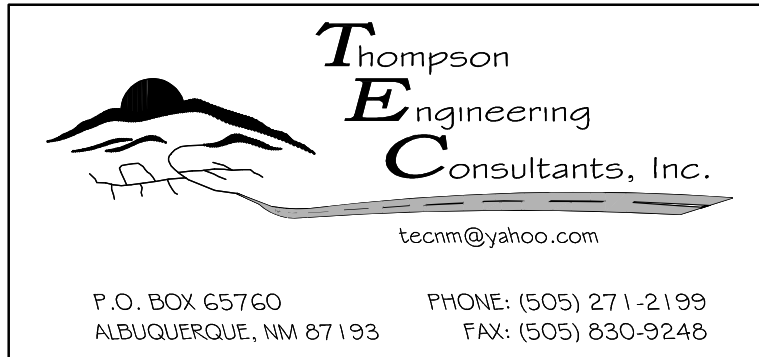
D5 AERIAL OF ACCESS ROUTES  
SCALE: NOT TO SCALE



B5 ZONE ATLAS PAGE  
SCALE: NOT TO SCALE

FIRE 1 PLAN KEYED NOTES

- EXISTING FIRE HYDRANT.
- CONNECT TO EXISTING 8" PUBLIC WATERLINE WITH 1.5" WITH CORPORATION STOP AND SERVICE LATERAL PER ABCWUA STD DWG 2363.
- 2" PEX WATER SUPPLY LINE
- 1"x1"x1" TEE IN PEX WATER SUPPLY LINE
- 1.5" WATER METER PER IN SINGLE METER BOX PER COA STD DWGS 2361 CASE 5
- 1" IRRIGATION STUB OUT. SEE LANDSCAPING IRRIGATION PLANS.
- APPROXIMATE LOCATION OF EXISTING 8" WATERLINE. FIELD VERIFY EXACT LOCATION.
- KNOX BOX.
- RED CURB WITH WHITE LETTERS "FIRE LANE NO PARKING"
- EXISTING 8" PUBLIC WATERLINE.



STAMP

PERMIT SET

PROJECT NAME  
2900 Central Project

2900 Central Ave SE  
Albuquerque, New Mexico

Parkland Hills Inc.

REVISIONS

NO.	DATE	DESCRIPTION

Copyright: Design Group

Drawn by: MTD  
Checked by: DBT  
Date: 11-27-2023  
Project number: 2594

SHEET TITLE

Fire 1 Plan

SHEET NUMBER

FIRE-1