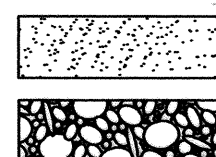


LEGEND

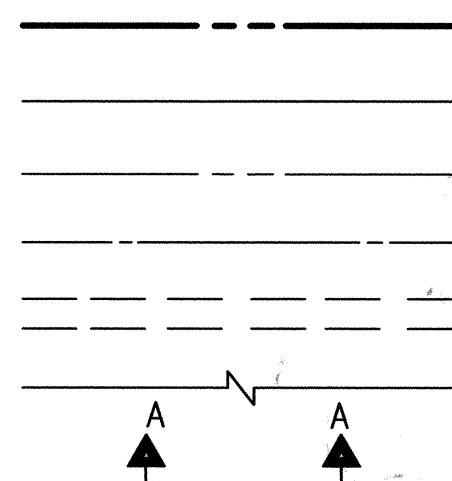
MATERIALS

CONCRETE
RIP-RAP



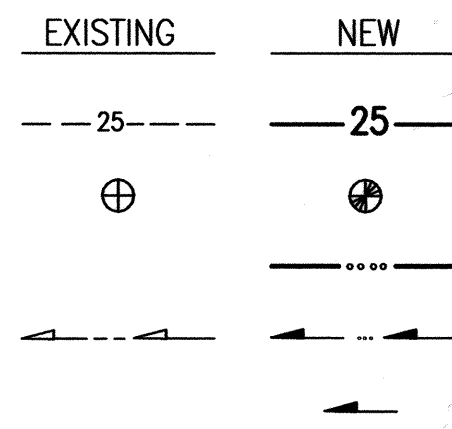
LINES

SUBDIVISION BOUNDARY
PROPERTY LINE (PLAN)
PROPERTY LINE (SECTION)
CENTERLINE
EASEMENT LINE
MATCH LINE
SECTION CUT LINE



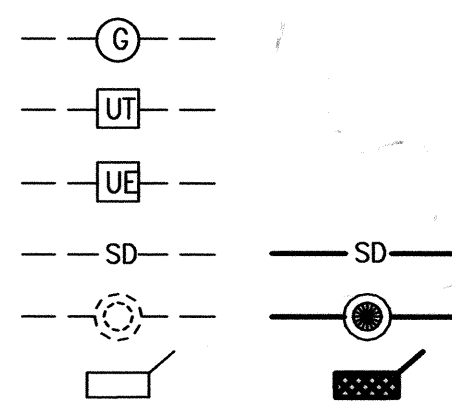
EARTHWORK

CONTOUR LINE
SPOT ELEVATION
PROJECT / PHASE BOUNDARY
FLOWLINE
DIRECTION OF FLOW



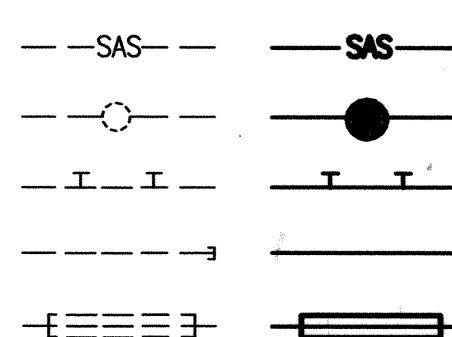
MISCELLANEOUS UTILITIES

GAS LINE
UNDERGROUND TELEPHONE
UNDERGROUND ELECTRICAL
STORM DRAIN
STORM DRAIN MANHOLE
STORM DRAIN INLET



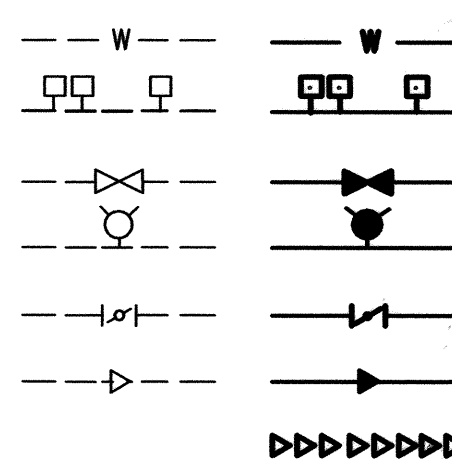
SANITARY SEWER

SANITARY SEWER LINE
SANITARY SEWER MANHOLE
SAS SERVICE CONNECTIONS
SAS CAP OR PLUG
ENCASEMENT



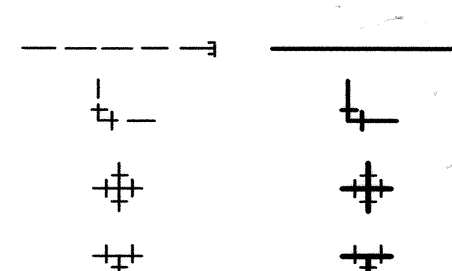
WATER

WATER LINE
WATER SERVICE CONNECTIONS
GATE VALVE
FIRE HYDRANT
BUTTERFLY VALVE
REDUCER
WATER PRESSURE ZONE BOUNDARY



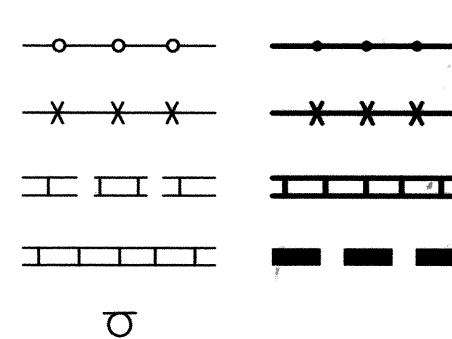
WATER FITTINGS

CAPS AND PLUGS
ELBOW
CROSS
TEE



MISCELLANEOUS

CHAINLINK FENCE
FIELD FENCE
COMMON YARD WALL
RETAINING WALL
POWER OR TELEPHONE POLE



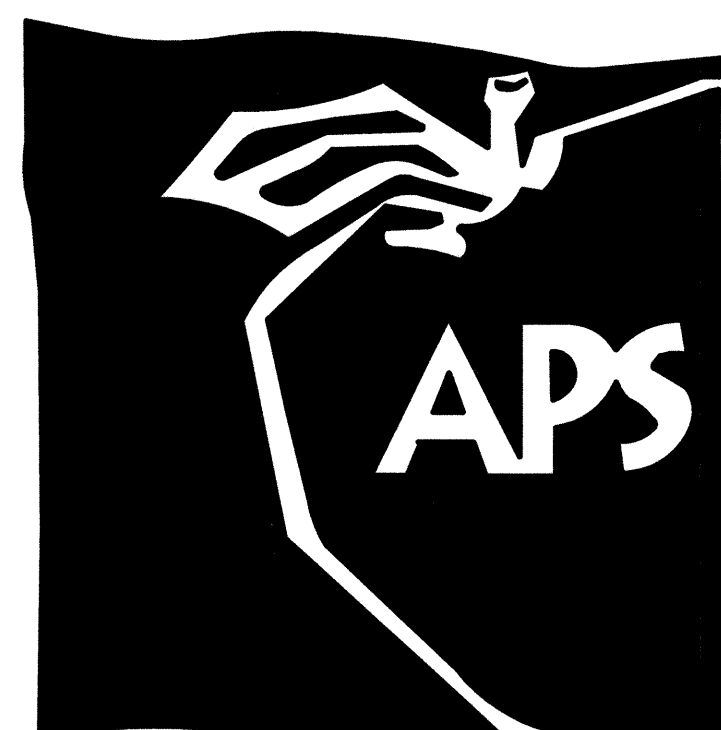
RECORD DRAWING

CONSTRUCTION PLANS

for

COAL AVENUE PEDESTRIAN MALL HIGHLAND HIGH SCHOOL

ALBUQUERQUE, NEW MEXICO
AUGUST, 2011



ENGINEER'S CERTIFICATION

I, JEFFREY G. MORTENSEN, NMPE 8547, OF THE FIRM HIGH MESA CONSULTING GROUP, HEREBY CERTIFY THAT THIS PROJECT HAS BEEN GRADED, DRAINED AND CONSTRUCTED IN SUBSTANTIAL COMPLIANCE WITH AND IN ACCORDANCE WITH THE DESIGN INTENT OF THE APPROVED PLAN DATED 08-01-2011 AND REVISED 09-07-2011. THE RECORD INFORMATION EDITED ONTO THE ORIGINAL DESIGN DOCUMENT HAS BEEN OBTAINED BY ME OR PERSONNEL UNDER MY DIRECT SUPERVISION AS SUPPLEMENTAL SITE DATA COMBINED WITH RECORD INFORMATION OBTAINED FROM THE AS-BUILT SURVEY DATED 11-23-2011 PERFORMED UNDER THE DIRECT SUPERVISION OF CHARLES G. CALA, JR., NMPS 11184, OF THE FIRM HIGH MESA CONSULTING GROUP, AND IS TRUE AND CORRECT TO THE BEST OF MY KNOWLEDGE AND BELIEF. THIS CERTIFICATION IS SUBMITTED TO DOCUMENT COMPLETION OF THOSE IMPROVEMENTS IDENTIFIED ON THE APPROVED PLAN FOR THE OWNER AND CITY OF ALBUQUERQUE TO SATISFY CONDITIONS OF GRADING APPROVAL.

THE RECORD INFORMATION PRESENTED HEREON IS NOT NECESSARILY COMPLETE AND INTENDED ONLY TO VERIFY SUBSTANTIAL COMPLIANCE OF THE GRADING AND DRAINAGE AND SPECIFIC LIMITED ASPECTS OF THIS PROJECT. THIS CERTIFICATION DOES NOT ADDRESS ADA COMPLIANCE WHICH IS BEYOND THE SCOPE OF GRADING AND DRAINAGE. THOSE RELYING ON THIS RECORD DOCUMENT ARE ADVISED TO OBTAIN INDEPENDENT VERIFICATION OF ITS ACCURACY BEFORE USING IT FOR ANY OTHER PURPOSE.

JEFFREY G. MORTENSEN, NMPE 8547
01-22-2012
DATE

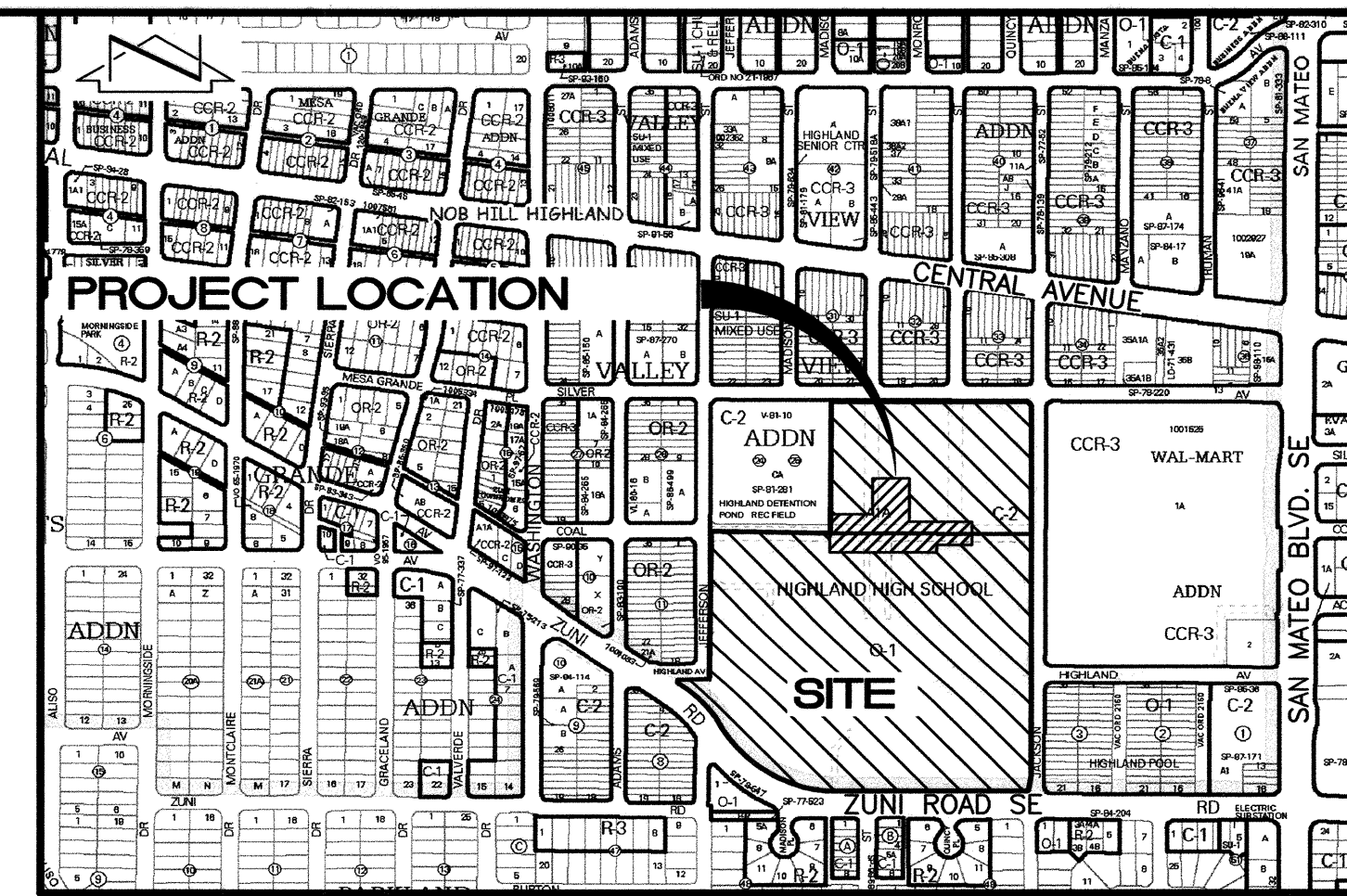


INDEX OF DRAWINGS

SHEET	DESCRIPTION
1	COVER SHEET, VICINITY MAP, GENERAL NOTES, LEGEND AND INDEX OF DRAWINGS
2	DEMOLITION PLAN
3	PAVING PLAN
4	PAVING SECTIONS AND DETAILS
5	GRADING PLAN
6	DRAINAGE PLAN AND CALCULATIONS
7	IRRIGATION PLAN
8	LANDSCAPE PLAN
STUDENT LOT	
1	IRRIGATION PLAN - STUDENT LOT
2	LANDSCAPE PLAN - STUDENT LOT



RECORD DRAWING



VICINITY MAP
SCALE: 1" = 750'

K-17

GENERAL NOTES:

- ALL WORK DETAILED ON THESE PLANS TO BE PERFORMED UNDER CONTRACT SHALL, EXCEPT AS OTHERWISE STATED OR PROVIDED FOR HEREON, BE CONSTRUCTED IN ACCORDANCE WITH THE NEW MEXICO STANDARD SPECIFICATIONS FOR PUBLIC WORKS CONSTRUCTION - 1987, PUBLISHED BY THE NEW MEXICO CHAPTER AMERICAN PUBLIC WORKS ASSOCIATION. (REVISED 12/08)
- TWO (2) WORKING DAYS PRIOR TO ANY EXCAVATION, CONTRACTOR MUST CONTACT NEW MEXICO ONE CALL SYSTEM, 260-1990, (ALBUQUERQUE AREA) 1-800-321-ALERT (2537) (STATEWIDE) FOR LOCATION OF EXISTING PUBLIC UTILITIES AND ALBUQUERQUE PUBLIC SCHOOLS OR THEIR DESIGNATED SUBSURFACE UTILITY CONSULTANT FOR APS-OWNED UTILITIES.
- IF ANY UTILITY LINES, PIPELINES, OR UNDERGROUND UTILITY LINES ARE SHOWN ON THESE DRAWINGS, THEY ARE SHOWN IN AN APPROXIMATE MANNER ONLY, AND SUCH LINES MAY EXIST WHERE NONE ARE SHOWN. IF ANY SUCH EXISTING LINES ARE SHOWN, THE LOCATION IS BASED UPON INFORMATION PROVIDED BY THE OWNER OF SAID UTILITY, AND THE INFORMATION MAY BE INCOMPLETE, OR MAY BE OBSOLETE BY THE TIME CONSTRUCTION COMMENCES. THE ENGINEER HAS CONDUCTED ONLY PRELIMINARY INVESTIGATION OF THE LOCATION, DEPTH, SIZE, OR TYPE OF EXISTING UTILITY LINES, PIPELINES, OR UNDERGROUND UTILITY LINES. THIS INVESTIGATION IS NOT CONCLUSIVE, AND MAY NOT BE COMPLETE, THEREFORE, MAKES NO REPRESENTATION PERTAINING THERETO, AND ASSUMES NO RESPONSIBILITY OR LIABILITY THEREFORE. THE CONTRACTOR SHALL INFORM ITSELF OF THE LOCATION OF ANY UTILITY LINE, PIPELINE, OR UNDERGROUND UTILITY LINE IN OR NEAR THE AREA OF THE WORK IN ADVANCE OF AND DURING EXCAVATION WORK. THE CONTRACTOR IS FULLY RESPONSIBLE FOR ANY AND ALL DAMAGE CAUSED BY ITS FAILURE TO LOCATE, IDENTIFY AND PRESERVE ANY AND ALL EXISTING UTILITIES, PIPELINES, AND UNDERGROUND UTILITY LINES. IN PLANNING AND CONDUCTING EXCAVATION, THE CONTRACTOR SHALL COMPLY WITH STATE STATUTES, MUNICIPAL AND LOCAL ORDINANCES, RULES AND REGULATIONS, IF ANY, PERTAINING TO THE LOCATION OF THESE LINES AND FACILITIES.
- SHOULD A CONFLICT EXIST BETWEEN THESE PLANS AND ACTUAL FIELD CONDITIONS, THE CONTRACTOR SHALL PROMPTLY NOTIFY THE ENGINEER IN WRITING SO THAT THE CONFLICT CAN BE RESOLVED WITH A MINIMUM AMOUNT OF DELAY FOR ALL PARTIES.
- THE CONTRACTOR SHALL MAINTAIN ACCESS TO ADJACENT PROPERTIES DURING CONSTRUCTION.
- ALL WORK ON THIS PROJECT SHALL BE PERFORMED IN ACCORDANCE WITH APPLICABLE FEDERAL, STATE AND LOCAL LAWS, RULES AND REGULATIONS CONCERNING SAFETY AND HEALTH.
- THE CONTRACTOR SHALL ENSURE THAT NO SOIL ERODES FROM THE SITE INTO PUBLIC RIGHT-OF-WAY OR ONTO PRIVATE PROPERTY.
- THE CONTRACTOR SHALL PROMPTLY CLEAN UP ANY MATERIAL EXCAVATED WITHIN THE PUBLIC RIGHT-OF-WAY SO THAT THE EXCAVATED MATERIAL IS NOT SUSCEPTIBLE TO BEING WASHED DOWN THE STREET.
- CONTRACTOR SHALL NOTIFY THE ENGINEER NOT LESS THAN SEVEN (7) DAYS PRIOR TO STARTING WORK IN ORDER THAT THE ENGINEER MAY TAKE NECESSARY MEASURES TO ENSURE THE PRESERVATION OF SURVEY MONUMENTS. CONTRACTOR SHALL NOT DISTURB PERMANENT SURVEY MONUMENTS WITHOUT THE CONSENT OF THE ENGINEER AND SHALL NOTIFY THE ENGINEER AND BEAR THE EXPENSE OF REPLACING ANY THAT MAY BE DISTURBED WITHOUT PERMISSION. REPLACEMENT SHALL BE DONE ONLY BY THE ENGINEER. WHEN A CHANGE IS MADE IN THE FINISHED ELEVATION OF THE PAVEMENT OF ANY ROADWAY IN WHICH A PERMANENT SURVEY MONUMENT IS LOCATED, CONTRACTOR SHALL, AT HIS OWN EXPENSE, ADJUST THE MONUMENT COVER TO THE NEW GRADE UNLESS OTHERWISE SPECIFIED.
- ALL PAVEMENT MARKINGS AND TRAFFIC SIGNS SHALL COMPLY WITH THE MANUAL OF UNIFORM TRAFFIC CONTROL DEVICES (MUTCD) PUBLISHED BY THE U.S. DEPARTMENT OF TRANSPORTATION FEDERAL HIGHWAY ADMINISTRATION, LATEST EDITION.
- IF THE REMOVAL OF EXISTING CURB AND GUTTER, SIDEWALK, AND/OR PAVING IS REQUIRED, THE CONTRACTOR SHALL SAWCUT AND/OR REMOVE TO THE NEAREST JOINT. WHEN ABUTTING NEW PAVEMENT TO EXISTING, THE CONTRACTOR SHALL CUT BACK THE EXISTING PAVING TO A STRAIGHT LINE IN ORDER TO REMOVE ANY BROKEN OR CRACKED PAVEMENT. CURB AND GUTTER AND/OR PAVEMENT SHOWN AS EXISTING AND NOT TO BE REMOVED UNDER THIS CONTRACT AND WHICH IS DAMAGED OR DISPLACED BY THE CONTRACTOR SHALL BE REMOVED AND REPLACED BY THE CONTRACTOR AT THE CONTRACTOR'S EXPENSE.
- A DISPOSAL SITE FOR ALL EXCESS EXCAVATION MATERIAL (CONTAMINATED OR OTHERWISE), ASPHALTIC PAVING, CONCRETE PAVING, ETC. SHALL BE OBTAINED BY THE CONTRACTOR IN COMPLIANCE WITH APPLICABLE REGULATIONS. ALL COSTS INCURRED IN OBTAINING A DISPOSAL SITE AND IN HAUL THERETO SHALL BE CONSIDERED INCIDENTAL TO CONSTRUCTION, THEREFORE, NO SEPARATE PAYMENT SHALL BE MADE.
- A BORROW SITE FOR IMPORT MATERIAL SHALL BE OBTAINED BY THE CONTRACTOR IN COMPLIANCE WITH APPLICABLE REGULATIONS. ALL COSTS INCURRED IN OBTAINING A BORROW SITE AND IN HAUL THERETO SHALL BE CONSIDERED INCIDENTAL TO CONSTRUCTION, THEREFORE, NO SEPARATE PAYMENT SHALL BE MADE.
- THE CONTRACTOR SHALL BE RESPONSIBLE FOR SAFELY OBTAINING THE REQUIRED COMPACTION. THE CONTRACTOR SHALL SELECT AND USE METHODS WHICH SHALL NOT BE INJURIOUS OR DAMAGING TO THE EXISTING FACILITIES AND STRUCTURES WHICH SURROUND THE WORK AREAS.
- THE CONTRACTOR SHALL CONFINE HIS WORK WITHIN THE CONSTRUCTION LIMITS IN ORDER TO PRESERVE THE EXISTING IMPROVEMENTS AND SO AS NOT TO INTERFERE WITH THE OPERATIONS OF THE EXISTING FACILITIES.
- THE CONTRACTOR SHALL BE RESPONSIBLE FOR SELECTING APPROPRIATE MEANS AND METHODS TO EXCAVATE AND TRENCH AND/OR INSTALL PIPE SO AS TO NOT EXCEED RIGHT-OF-WAY OR EASEMENT LIMITS, AND SO AS NOT TO INTERFERE WITH OTHER UTILITIES OR IMPROVEMENTS. THIS SHALL BE CONSIDERED INCIDENTAL TO CONSTRUCTION, THEREFORE, NO SEPARATE PAYMENT WILL BE MADE.
- THE CONTRACTOR SHALL BE RESPONSIBLE FOR PROTECTING, SUPPORTING AND REPLACING, IF DAMAGED, ALL UTILITIES ENCOUNTERED DURING CONSTRUCTION. THIS SHALL BE CONSIDERED INCIDENTAL TO CONSTRUCTION, THEREFORE, NO SEPARATE PAYMENT WILL BE MADE.
- ALL DIMENSIONS AND RADII OF CURB, CURB RETURNS, AND WALLS ARE SHOWN TO THE FACE OF CURB AND/OR WALL.
- THE CONTRACTOR SHALL NOTIFY THE OWNER 48 HOURS PRIOR TO STRIPING SO THAT LAYOUT CAN BE VERIFIED.
- PRIOR TO CONSTRUCTION, THE CONTRACTOR SHALL EXCAVATE AND VERIFY THE HORIZONTAL AND VERTICAL LOCATION OF ALL POTENTIAL OBSTRUCTIONS. SHOULD A CONFLICT EXIST, THE CONTRACTOR SHALL NOTIFY THE ENGINEER IN WRITING SO THAT THE CONFLICT CAN BE RESOLVED WITH A MINIMUM AMOUNT OF DELAY. THE CONTRACTOR SHALL BE RESPONSIBLE FOR ALL INTERPRETATIONS IT MAKES WITHOUT FIRST CONTACTING THE ENGINEER AS REQUIRED ABOVE.
- WHEN APPLICABLE, CONTRACTOR SHALL SECURE, ON BEHALF OF THE OWNER AND OPERATORS, "TOPSOIL DISTURBANCE PERMIT" FROM THE CITY AND/OR FILE A NOTICE OF INTENT (N.O.I.) WITH THE EPA PRIOR TO BEGINNING CONSTRUCTION.
- ALL FILL SHALL BE CLEAN, FREE FROM VEGETATION, DEBRIS, AND OTHER DELETERIOUS MATERIALS, AND SHALL NOT BE CONTAMINATED WITH HYDROCARBONS OR OTHER CHEMICAL CONTAMINANTS.
- ALL FILL SHALL BE COMPACTED TO A MINIMUM OF 95% ASTM D-1557 UNLESS A GREATER COMPACTION REQUIREMENT IS OTHERWISE SPECIFIED.
- CAUTION: THESE DRAWINGS DO NOT INCLUDE NECESSARY COMPONENTS FOR CONSTRUCTION SAFETY WHICH SHALL REMAIN THE RESPONSIBILITY OF THE CONTRACTOR. ALL EXCAVATION, TRENCHING AND SHORING ACTIVITIES MUST BE CARRIED-OUT IN ACCORDANCE WITH OSHA 29 CFR 1926, SUBPART P-EXCAVATIONS.

JOB NO. 2010.180.5

12357 & 8	9/11								
1-8	1/12								
REV.	SHEETS	CITY	ENGINEER	DATE	USER	DEPARTMENT	DATE	USER	DEPARTMENT
APPROVAL OF REVISIONS									



HIGH MESA Consulting Group
6010-B MIDWAY PARK BLVD. NE • ALBUQUERQUE, NEW MEXICO 87109
PHONE: 505.345.4250 • FAX: 505.345.4254 • www.highmesacg.com

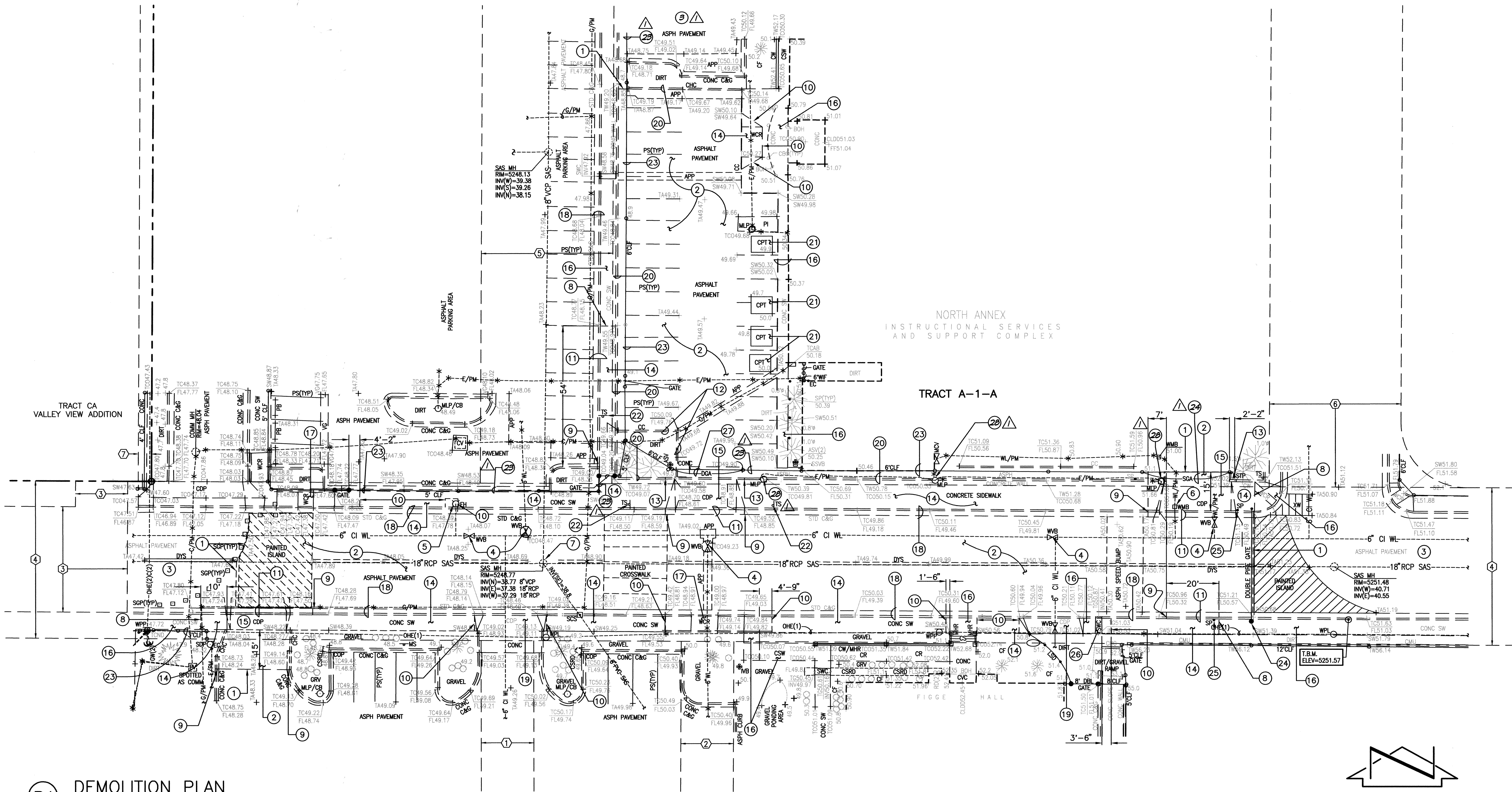
APPROVED FOR CONSTRUCTION

C.E.

SHEET 1 OF 8

EXISTING LEGEND

APP	ASPHALT PAVING PATCH
ASPH	ASPHALT
ASV	ANTI-SIPHON VALVE
BOH	BUILDING OVERHANG
C&G	CURB AND GUTTER
C/PM	COMMUNICATION LINE BY PAINT MARK
CBC	CONCRETE BUILDING COLUMN
CCP	CONCRETE CURB
CDP	CONCRETE DRIVE PAD
CF	LANDSCAPE CRUSHER FINES
CHC	CONCRETE HEADER CURB
CI	CAST IRON PIPE
CLDD	CENTERLINE DOUBLE DOOR
CLF	CHAIN LINK FENCE
CMU	CONCRETE MASONRY UNIT WALL
COMM	COMMUNICATION
CONC	CONCRETE
COP	CONCRETE CURB OPENING
CPT	CONCRETE PICNIC TABLE
CR	CONCRETE RAMPS
CS	CONCRETE STEPS
CSRD	CONCRETE AND STONE ROUNDOFF
CSW	CONCRETE SIDEWALK
CV	COMMUNICATION VAULT
CVC	COVERED CONCRETE
CW	CONCRETE WALL
CW/MHR	CONCRETE WALL WITH METAL HAND RAIL ON TOP
DBL	DOUBLE
DGA	DOUBLE GATE
DYS	PAINTED DOUBLE YELLOW STRIPE
E/PM	ELECTRIC LINE BY PAINT MARK
EC	ELECTRIC CONDUIT
EV	ELECTRIC VAULT
FF	FINISHED FLOOR ELEVATION
FH	FIRE HYDRANT
FL	FLOWLINE
G/PM	GAS LINE BY PAINT MARK
GRV	GRAVEL
GW	GUY WIRE
INV	INVERT ELEVATION
IVB	IRRIGATION VALVE BOX
LSD	LANDSCAPE DIVIDER
LST	LANDSCAPE TIMBER
MCV	METER CAN WITH VALVE
MH	MANHOLE
MHR	METAL HAND RAIL
MLP	METAL LIGHT POLE
MLP/CB	METAL LIGHT POLE WITH 2" CONCRETE BASE
MS	METAL SIGN
OHE(1)	OVERHEAD ELECTRIC (# OF LINES)
PE	CONCRETE PARKING BUMPER
PS	PAINTED PARKING STRIPE
PVC	POLYVINYL CHLORIDE PIPE
RCP	REINFORCED CONCRETE PIPE
ROD	ROOF DRAIN
SAS	SANITARY SEWER
SOS	5" CURB SCRATCH
SDP	SERVICE DROP POLE
SGA	SLIDE GATE
SOP	STEEL GUARD POST (REMOVABLE)
SP	STEEL POLE (GATE STOP)
SSVB	SMALL SPRINKLER VALVE BOX
STD	STANDARD
STP	4" PVC STAND PIPE
SW	SIDEWALK
SWC	SIDEWALK CULVERT
TA	TOP OF ASPHALT
TC	TOP OF CURB
TCAB	COMMUNICATION CABINET
TCND	COMMUNICATION CONDUIT
TCO	TOP OF CONCRETE
TO	TOP OF CRATE
TS	TOP OF TRAFFIC SIGN
TW	TOP OF WALL
TYP	TYPICAL
VCP	VITRIFIED CLAY PIPE
VQ	CONCRETE VALLEY GUTTER
WCR	CONCRETE WHEELCHAIR RAMP
WIF	WROUGHT IRON FENCE
WL	WATER LINE
WL/PM	WATER LINE BY PAINT MARK
WMB	WATER METER BOX
WPL	WOOD POWER POLE WITH LIGHT
WPP	WOOD POWER POLE
WVB	WATER VALVE BOX
XW	PAINTED CROSSTRAK
*	PAINTED UTILITY MARKER
☼	CONIFEROUS TREE
☼	DECIDUOUS TREE
○	SHRUB
○	LANDSCAPE BOULDER



B1 DEMOLITION PLAN

SCALE: 1" = 20'

BENCHMARKS

PROJECT BENCHMARK

ACS 2" BRASS DISC SET STAMPED "6-K18A ACS" SET IN SIDEWALK AT THE INTERSECTION OF CENTRAL AVENUE AND JACKSON STREET.
ELEVATION = 5249.99 FEET (NAVD 1988)

T.B.M.

A MAG NAIL SET AT BACK OF CURB, AS SHOWN ON THIS DRAWING.
ELEVATION = 5251.57 FEET (NAVD 1988)

DESIGN SURVEY NOTE:

THIS IS NOT A BOUNDARY SURVEY. DATA IS SHOWN FOR ORIENTATION ONLY. BOUNDARY INFORMATION DEPICTED BY THIS PLAN IS BASED UPON AN UNRECORDED BOUNDARY SURVEY BY HIGH MESA CONSULTING GROUP, NMPS 11184, DATED 03-30-2010. THE TOPOGRAPHIC INFORMATION DEPICTED HEREON IS BASED UPON AN UPDATED TOPOGRAPHIC AND UTILITY SURVEY PREPARED BY HIGH MESA CONSULTING GROUP, NMPS 11184, DATED 05-17-2011. (2010.166.2)

EASEMENT KEYED NOTES

① 20' PUBLIC WATERLINE EASEMENT GRANTED BY PLAT 90C-142

② 20' ABCWUA PUBLIC WATERLINE EASEMENT GRANTED BY PLAT 2008C-260

③ PRIVATE ACCESS EASEMENT GRANTED BY PLAT 2009-96 TO SERVE TRACT CA, VALLEY VIEW ADDITION. MAINTENANCE SHALL BE THE RESPONSIBILITY OF THE OWNER OF TRACT A-1-A, HIGHLAND HIGH SCHOOL. COAL AVENUE S.E. BETWEEN JEFFERSON STREET S.E. AND JACKSON STREET S.E. VACATED BY 09DRB-70050. PUBLIC EASEMENTS RETAINED (CITY OF ALBUQUERQUE PUBLIC DRAINAGE, ABCWUA PUBLIC SANITARY SEWER AND PUBLIC WATER, PUBLIC SERVICE COMPANY OF NEW MEXICO, INC.). SUBSURFACE MAINTENANCE OF THE PUBLIC DRAINAGE EASEMENT IS THE RESPONSIBILITY OF THE CITY OF ALBUQUERQUE. SURFACE MAINTENANCE OF THE RETAINED EASEMENTS IS THE RESPONSIBILITY OF THE OWNER OF TRACT A-1-A, HIGHLAND HIGH SCHOOL.

④ COAL AVENUE S.E. BETWEEN JEFFERSON STREET S.E. AND JACKSON STREET S.E. VACATED BY 09DRB-70050. PUBLIC EASEMENTS RETAINED (CITY OF ALBUQUERQUE PUBLIC DRAINAGE, ABCWUA PUBLIC SANITARY SEWER AND PUBLIC WATER, PUBLIC SERVICE COMPANY OF NEW MEXICO, INC.). SUBSURFACE MAINTENANCE OF THE PUBLIC DRAINAGE EASEMENT IS THE RESPONSIBILITY OF THE CITY OF ALBUQUERQUE. SURFACE MAINTENANCE OF THE RETAINED EASEMENTS IS THE RESPONSIBILITY OF THE OWNER OF TRACT A-1-A, HIGHLAND HIGH SCHOOL.

⑤ MONROE STREET S.E. BETWEEN SILVER AVENUE S.E. AND COAL AVENUE S.E. VACATED BY 09DRB-70050. PUBLIC EASEMENTS RETAINED (ABCWUA PUBLIC SANITARY SEWER AND PUBLIC WATER, PUBLIC SERVICE COMPANY OF NEW MEXICO, NEW MEXICO GAS COMPANY, QWEST TELECOMMUNICATIONS, AND COMCAST CABLE VISION OF NEW MEXICO, INC.). SURFACE MAINTENANCE OF THE RETAINED EASEMENTS IS THE RESPONSIBILITY OF THE OWNER OF TRACT A-1-A, HIGHLAND HIGH SCHOOL.

⑥ QUINCY STREET S.E. BETWEEN SILVER AVENUE S.E. AND COAL AVENUE S.E. VACATED BY 09DRB-70050. PUBLIC EASEMENTS RETAINED (ABCWUA PUBLIC SANITARY SEWER AND PUBLIC WATER, PUBLIC SERVICE COMPANY OF NEW MEXICO, NEW MEXICO GAS COMPANY, QWEST TELECOMMUNICATIONS, AND COMCAST CABLE VISION OF NEW MEXICO, INC.). SURFACE MAINTENANCE OF THE RETAINED EASEMENTS IS THE RESPONSIBILITY OF THE OWNER OF TRACT A-1-A, HIGHLAND HIGH SCHOOL.

⑦ 5' UTILITY EASEMENT GRANTED BY PLAT A8-102 (OFFSITE)

DEMOLITION PLAN KEYED NOTES

- NEATLY SAWCUT EXISTING ASPHALT PAVING
- REMOVE AND DISPOSE OF EXISTING ASPHALT PAVING
- EXISTING ASPHALT PAVING TO REMAIN
- EXISTING WATER VALVE BOX TO BE ADJUSTED TO GRADE
- EXISTING FIRE HYDRANT WITH CONCRETE PAD TO REMAIN
- EXISTING WATER METER BOX TO BE ADJUSTED TO GRADE
- EXISTING SANITARY SEWER MANHOLE TO BE ADJUSTED TO GRADE
- NEATLY SAWCUT EXISTING SIDEWALK AND CURB AND GUTTER
- NEATLY SAWCUT EXISTING CURB AND GUTTER
- NEATLY SAWCUT EXISTING CONCRETE SIDEWALK
- REMOVE AND DISPOSE OF EXISTING CURB AND GUTTER
- REMOVE AND DISPOSE OF EXISTING CONCRETE HEADER CURB
- NEATLY SAWCUT EXISTING HEADER CURB
- REMOVE AND DISPOSE OF EXISTING CONCRETE SIDEWALK

- REMOVE AND DISPOSE OF EXISTING CONCRETE DRIVEPAD
- EXISTING CONCRETE SIDEWALK TO REMAIN
- EXISTING WHEELCHAIR RAMP TO REMAIN
- EXISTING CURB AND GUTTER TO REMAIN
- EXISTING DRIVEPAD TO REMAIN
- EXISTING HEADER CURB TO REMAIN
- REMOVE AND SALVAGE EXISTING PICNIC TABLE
- REMOVE AND RETURN EXISTING TRAFFIC SIGN
- EXISTING CHAIN LINK FENCE TO REMAIN
- EXISTING GATE TO REMAIN
- EXISTING GATE STOP TO REMAIN
- EXISTING SIDEWALK CULVERT TO REMAIN
- REMOVE AND RETURN EXISTING GATE
- EXISTING LIGHT POLE TO REMAIN

RECORD DRAWING

DESIGNED BY	J.D.S.	DATE	9/11	BY	J.D.S.	REVISIONS	CLARIFY LIGHTING AND FENCE REMOVAL LIMITS	JOB NO.	2010.180.5
DRAWN BY	CLT/E.J.S.	DATE	12/11	BY	B.E.E.	REVISIONS	RECORD DRAWING	DATE	09-2011
APPROVED BY	J.G.M.							SHEET	2 OF 8

HIGH MESA Consulting Group
6010-B MIDWAY PARK BLVD. NE • ALBUQUERQUE, NEW MEXICO 87109
PHONE: 505.345.4250 • FAX: 505.345.4254 • www.highmesacg.com

DEMOLITION PLAN COAL AVENUE PEDESTRIAN MALL HIGHLAND HIGH SCHOOL

EXISTING LEGEND

APP	ASPHALT PAVING PATCH
ASV	ANTI-SIPHON VALVE
BOH	BUILDING OVERHANG
C&G	CURB AND GUTTER
C/PM	COMMUNICATION LINE BY PAINT MARK
CBC	CONCRETE BUILDING COLUMN
CC	CONCRETE CURB
CDP	CONCRETE DRIVE PAD
CF	LANDSCAPE CRUSHER FINES
CHC	CONCRETE HEADER CURB
CI	CAST IRON PIPE
CLDD	CENTERLINE DOUBLE DOOR
CLF	CHAIN LINK FENCE
CMU	CONCRETE MASONRY UNIT WALL
COMM	COMMUNICATION
CONC	CONCRETE
COP	CONCRETE CURB OPENING
CPT	CONCRETE PICNIC TABLE
CR	CONCRETE RAMP
CS	CONCRETE STEPS
CSRD	CONCRETE AND STONE RUNDOWN
CSW	CONCRETE SIDEWALK
CV	COMMUNICATION VAULT
CW	COVERED CONCRETE
CW/MHR	CONCRETE WALL WITH METAL HAND RAIL ON TOP
DBL	DOUBLE
DGA	DOUBLE GATE
DYS	PAINTED DOUBLE YELLOW STRIPE
E/PM	ELECTRIC LINE BY PAINT MARK
EC	ELECTRIC CONDUIT
EV	ELECTRIC VAULT
FF	FINISHED FLOOR ELEVATION
FI	FIRE HYDRANT
FL	FLOWLINE
G/PM	GAS LINE BY PAINT MARK
GRV	GRAVEL
GW	GUY WIRE
INV	INVERT ELEVATION
IVB	IRRIGATION VALVE BOX
LSD	LANDSCAPE DIVIDER
LST	LANDSCAPE TIMBER
MCV	METER CAN WITH VALVE
MHR	METAL HAND RAIL
MLP	METAL LIGHT POLE
MCP/CB	METAL LIGHT POLE WITH 2" CONCRETE BASE
MS	METAL SIGN
OHE(1)	OVERHEAD ELECTRIC (# OF LINES)
PB	CONCRETE PARKING BUMPER
PS	PAINTED PARKING STRIPE
PVC	POLYVINYL CHLORIDE PIPE
RCP	REINFORCED CONCRETE PIPE
RD	ROOF DRAIN
SAS	SANITARY SEWER
SCS	"S" CURB SCRATCH
SDP	SERVICE DROP POLE
SGA	STEEL GATE
SGP	STEEL GUARD POST (REMOVABLE)
SP	STEEL POLE (GATE STOP)
SSVB	SMALL SPRINKLER VALVE BOX
STD	STANDARD
STP	4" PVC STAND PIPE
SW	SIDEWALK
SWC	SIDEWALK CULVERT
TA	TOP OF ASPHALT
TC	TOP OF CURB
TCAB	COMMUNICATION CABINET
TCND	COMMUNICATION CONDUIT
TCO	TOP OF CONCRETE
TG	TOP OF GRATE
TS	TRAFFIC SIGN
TW	TOP OF WALL
TYP	TYPICAL
VCP	VITRIFIED CLAY PIPE
VC	CONCRETE VAULT GUTTER
WCR	CONCRETE WHEELCHAIR RAMP
WIF	WROUGHT IRON FENCE
WL	WATER LINE
WL/PM	WATER LINE BY PAINT MARK
WMB	WATER METER BOX
WPL	WOOD POWER POLE WITH LIGHT
WPP	WOOD POWER POLE
WVB	WATER VALVE BOX
XW	PAINTED CROSSWALK
*	PAINTED UTILITY MARKER
☼	CONIFEROUS TREE
☼	DECIDUOUS TREE
○	SHRUB
○	LANDSCAPE BOULDER

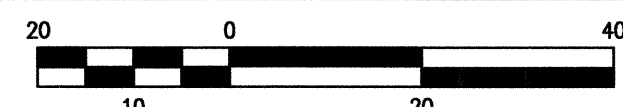
RECORD INFORMATION LEGEND

CONSTRUCT	RECORD INFORMATION (VERIFIED BY ENGINEER)
✓	AS-CONSTRUCTED = AS-DESIGNED (VERIFIED BY ENGINEER)
36" 42"	RECORD INFORMATION (VERIFIED BY ENGINEER)
+25.2	RECORD INFORMATION (VERIFIED BY ENGINEER)
28.98.42	RECORD INFORMATION (VERIFIED BY ENGINEER)
✓	AS-CONSTRUCTED = AS-DESIGNED (VERIFIED BY AS-BUILT SURVEY)
31.8	RECORD INFORMATION FROM AS-BUILT SURVEY
+26.9	RECORD INFORMATION FROM AS-BUILT SURVEY
31.25.22	RECORD INFORMATION FROM AS-BUILT SURVEY

NORTH ANNEX
INSTRUCTIONAL SERVICES
AND SUPPORT COMPLEX

TRACT A-1-A

RECORD DRAWING FOR CERTIFICATION, SEE SHEET 1



PAVING PLAN SCALE: 1" = 20'

BENCHMARKS

PROJECT BENCHMARK

ACS 2" BRASS DISC SET STAMPED "6-K18A ACS" SET IN SIDEWALK AT THE INTERSECTION OF CENTRAL AVENUE AND JACKSON STREET.
ELEVATION = 5249.99 FEET (NAVD 1988)

T.B.M.

A MAG NAIL SET AT BACK OF CURB, AS SHOWN ON THIS DRAWING.
ELEVATION = 5251.57 FEET (NAVD 1988)

DESIGN SURVEY NOTE:

THIS IS NOT A BOUNDARY SURVEY. DATA IS SHOWN FOR ORIENTATION ONLY. BOUNDARY INFORMATION DEPICTED BY THIS PLAN IS BASED UPON AN UNRECORDED BOUNDARY SURVEY BY HIGH MESA CONSULTING GROUP, NMPS 11184, DATED 03-30-2010. THE TOPOGRAPHIC INFORMATION DEPICTED HEREON IS BASED UPON AN UPDATED TOPOGRAPHIC AND UTILITY SURVEY PREPARED BY HIGH MESA CONSULTING GROUP, NMPS 11184, DATED 05-17-2011. (2010.186.2)

EASEMENT KEYED NOTES

- 20' PUBLIC WATERLINE EASEMENT GRANTED BY PLAT 90C-142
- 20' ABCWUA PUBLIC WATERLINE EASEMENT GRANTED BY PLAT 2008C-260
- PRIVATE ACCESS EASEMENT GRANTED BY PLAT 2009-96 TO SERVE TRACT CA, VALLEY VIEW ADDITION. MAINTENANCE SHALL BE THE RESPONSIBILITY OF THE OWNER OF TRACT A-1-A, HIGHLAND HIGH SCHOOL. COAL AVENUE S.E. BETWEEN JEFFERSON STREET S.E. AND JACKSON STREET S.E. VACATED BY 09DRB-70050. PUBLIC EASEMENTS RETAINED (CITY OF ALBUQUERQUE PUBLIC DRAINAGE, ABCWUA PUBLIC SANITARY SEWER AND PUBLIC WATER, PUBLIC SERVICE COMPANY OF NEW MEXICO, NEW MEXICO GAS COMPANY, QWEST TELECOMMUNICATIONS, AND COMCAST CABLE VISION OF NEW MEXICO, INC.). SUBSURFACE MAINTENANCE OF THE PUBLIC DRAINAGE EASEMENT IS THE RESPONSIBILITY OF THE CITY OF ALBUQUERQUE. SURFACE MAINTENANCE OF THE RETAINED EASEMENTS IS THE RESPONSIBILITY OF THE OWNER OF TRACT A-1-A, HIGHLAND HIGH SCHOOL.

- COAL AVENUE S.E. BETWEEN JEFFERSON STREET S.E. AND JACKSON STREET S.E. VACATED BY 09DRB-70050. PUBLIC EASEMENTS RETAINED (CITY OF ALBUQUERQUE PUBLIC DRAINAGE, ABCWUA PUBLIC SANITARY SEWER AND PUBLIC WATER, PUBLIC SERVICE COMPANY OF NEW MEXICO, NEW MEXICO GAS COMPANY, QWEST TELECOMMUNICATIONS, AND COMCAST CABLE VISION OF NEW MEXICO, INC.). SUBSURFACE MAINTENANCE OF THE PUBLIC DRAINAGE EASEMENT IS THE RESPONSIBILITY OF THE CITY OF ALBUQUERQUE. SURFACE MAINTENANCE OF THE RETAINED EASEMENTS IS THE RESPONSIBILITY OF THE OWNER OF TRACT A-1-A, HIGHLAND HIGH SCHOOL.

- MONROE STREET S.E. BETWEEN SILVER AVENUE S.E. AND COAL AVENUE S.E. VACATED BY 09DRB-70050. PUBLIC EASEMENTS RETAINED (ABCWUA PUBLIC SANITARY SEWER AND PUBLIC WATER, PUBLIC SERVICE COMPANY OF NEW MEXICO, NEW MEXICO GAS COMPANY, QWEST TELECOMMUNICATIONS, AND COMCAST CABLE VISION OF NEW MEXICO, INC.). SURFACE MAINTENANCE OF THE RETAINED EASEMENTS IS THE RESPONSIBILITY OF THE OWNER OF TRACT A-1-A, HIGHLAND HIGH SCHOOL.
- QUINCY STREET S.E. BETWEEN SILVER AVENUE S.E. AND COAL AVENUE S.E. VACATED BY 09DRB-70050. PUBLIC EASEMENTS RETAINED (ABCWUA PUBLIC SANITARY SEWER AND PUBLIC WATER, PUBLIC SERVICE COMPANY OF NEW MEXICO, NEW MEXICO GAS COMPANY, QWEST TELECOMMUNICATIONS, AND COMCAST CABLE VISION OF NEW MEXICO, INC.). SURFACE MAINTENANCE OF THE RETAINED EASEMENTS IS THE RESPONSIBILITY OF THE OWNER OF TRACT A-1-A, HIGHLAND HIGH SCHOOL.
- 5' UTILITY EASEMENT GRANTED BY PLAT A8-102 (OFFSITE)

PAVING PLAN KEYED NOTES

- CONSTRUCT 3" ASPHALT PAVEMENT PER TYPICAL SECTION, SHEET 4 (TRANSITION FROM FULL CROWN TO HALF CROWN)
- CONSTRUCT 4" CONCRETE SIDEWALK PER TYPICAL SECTION, SHEET 4
- CONSTRUCT 6" CONCRETE PAVEMENT PER TYPICAL SECTION, SHEET 4
- CONSTRUCT 6" COLORED (INTEGRAL) CONCRETE PAVEMENT PER TYPICAL SECTION, SHEET 4
- CONSTRUCT CURB AND GUTTER TRANSITION (0" TO 8") PER TYPICAL SECTION, (SIM.) SHEET 4
- CONSTRUCT CURB AND GUTTER AT ACCESS RAMP/DRIVEPAD PER TYPICAL SECTION, SHEET 4
- CONSTRUCT CONCRETE HEADER CURB PER TYPICAL SECTION, SHEET 4
- CONSTRUCT 4" CONCRETE SIDEWALK WITH INTEGRAL HEADER CURB PER TYPICAL SECTION, SHEET 4
- CONSTRUCT ADA RAMP WITH INTEGRAL HEADER CURB AT BACK OF SIDEWALK PER TYPICAL SECTION, SHEET 4
- CONSTRUCT 24" DRIVEPAD PER TYPICAL DETAIL AND SECTION, SHEET 4
- ADJUST EXISTING WATER METER BOX TO GRADE
- ADJUST EXISTING WATER VALVE BOX TO GRADE
- ADJUST EXISTING SANITARY SEWER MANHOLE TO GRADE
- PAINT 4" PAVEMENT MARKINGS WITH WHITE TRAFFIC PAINT, MIN. 2 COATS

- PAINT 4" WIDE CROSS-HATCH (2" CC) PAVEMENT MARKINGS @ 45 DEG WITH WHITE TRAFFIC PAINT, MIN. 2 COATS
- INSTALL 1 - ADA COMPLIANT HANDICAP PARKING SPACE PAVEMENT MARKING
- INSTALL 1 - ADA COMPLIANT HANDICAP PARKING SIGN (ATTACH TO FENCE)
- INSTALL 1 - ADA COMPLIANT HANDICAP PARKING SIGN WITH VAN ACCESSIBLE PLACARD (ATTACH TO FENCE)
- EXISTING METAL LIGHT POLE TO REMAIN
- INSTALL CONCRETE WHEELSTOP AT LIP OF GUTTER PER TYPICAL SECTION, SHEET 4
- REINSTALL SALVAGED PICNIC TABLE
- INSTALL 4"x24" DOUBLE LEAF CHAIN LINK GATE (NORMALLY CLOSED AND LOCKED) - FOR EMERGENCY ACCESS ONLY
- INSTALL 4" CHAIN LINK FENCE
- INSTALL 6"x6" CHAIN LINK GATE FOR PEDESTRIAN ACCESS
- INSTALL 6"x12" CHAIN LINK GATE (NORMALLY CLOSED) FOR EMERGENCY ACCESS
- NEW LANDSCAPING/CRUSHER FINES (SEE SHEETS 7 & 8)
- EXISTING FENCE TO REMAIN
- INSTALL 1 - 2" PVC CLASS 200 IRRIGATION SLEEVE
- EXISTING 2" PVC CLASS 200 IRRIGATION SLEEVE TO REMAIN
- NEW CURB AND GUTTER

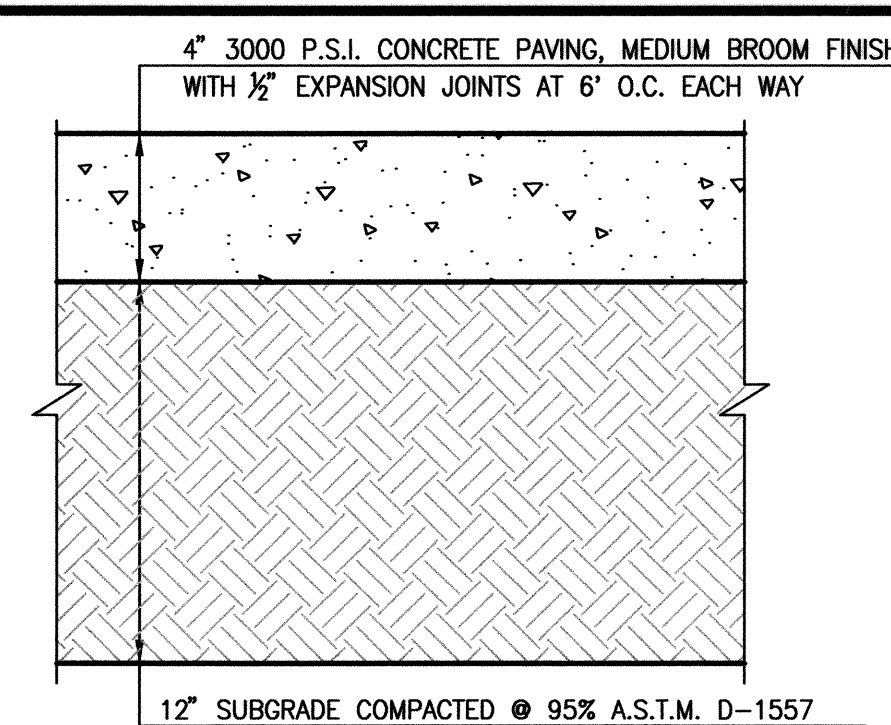
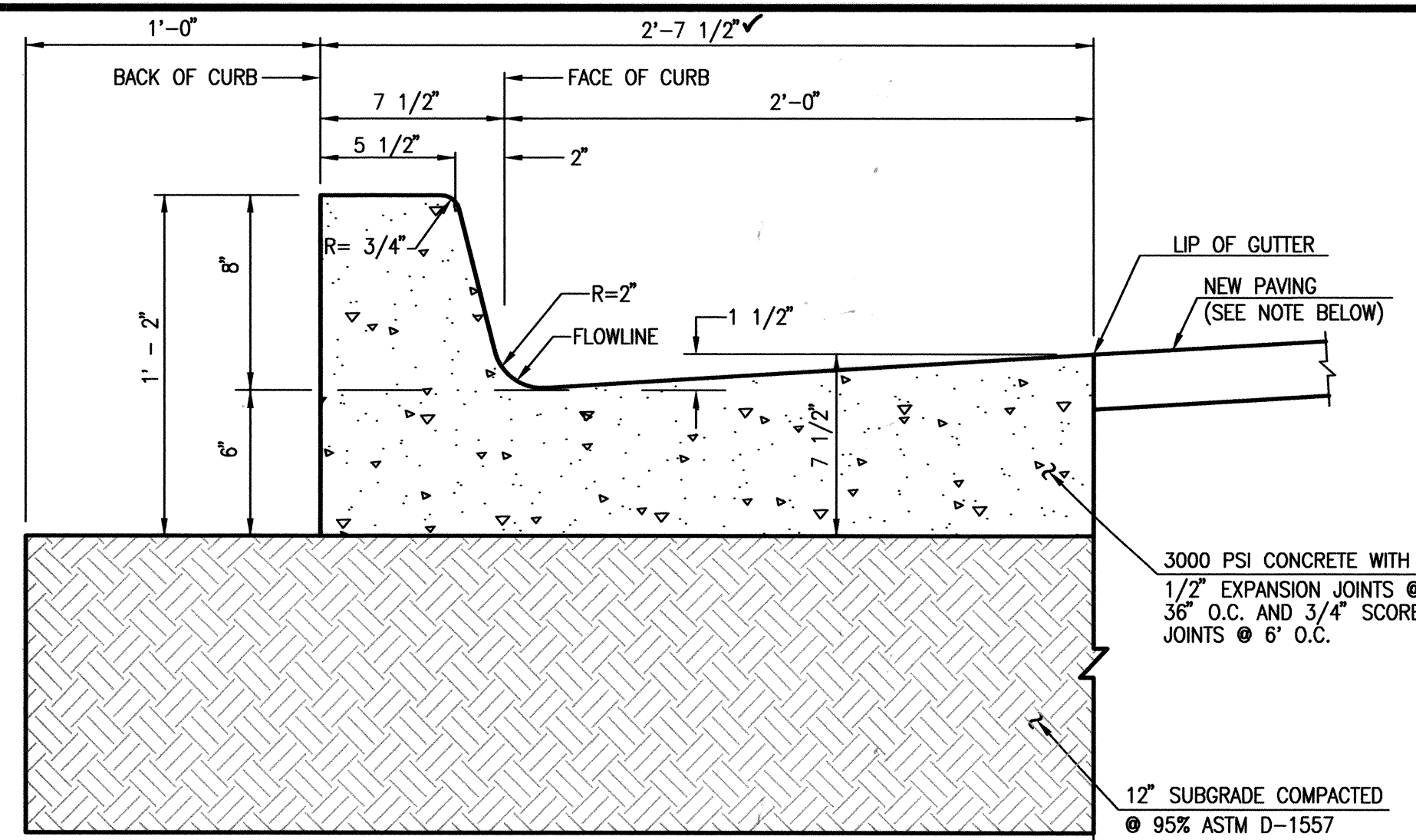
DESIGNED BY	DATE	BY	REVISIONS	JOB NO.
J.G.M./J.D.S.	9/11	J.D.S.	ADD IRRIGATION SLEEVES, CLARIFY LANDSCAPED AREAS	2010.180.5
DRAWN BY	12/11	B.E.E.	RECORD DRAWINGS AND CERTIFICATION	DATE
APPROVED BY	J.G.M.			09-2011
				SHEET 3 OF 8

HIGH MESA Consulting Group

6010-B MIDWAY PARK BLVD. NE • ALBUQUERQUE, NEW MEXICO 87109
PHONE: 505.345.4250 • FAX: 505.345.4254 • www.highmesacg.com

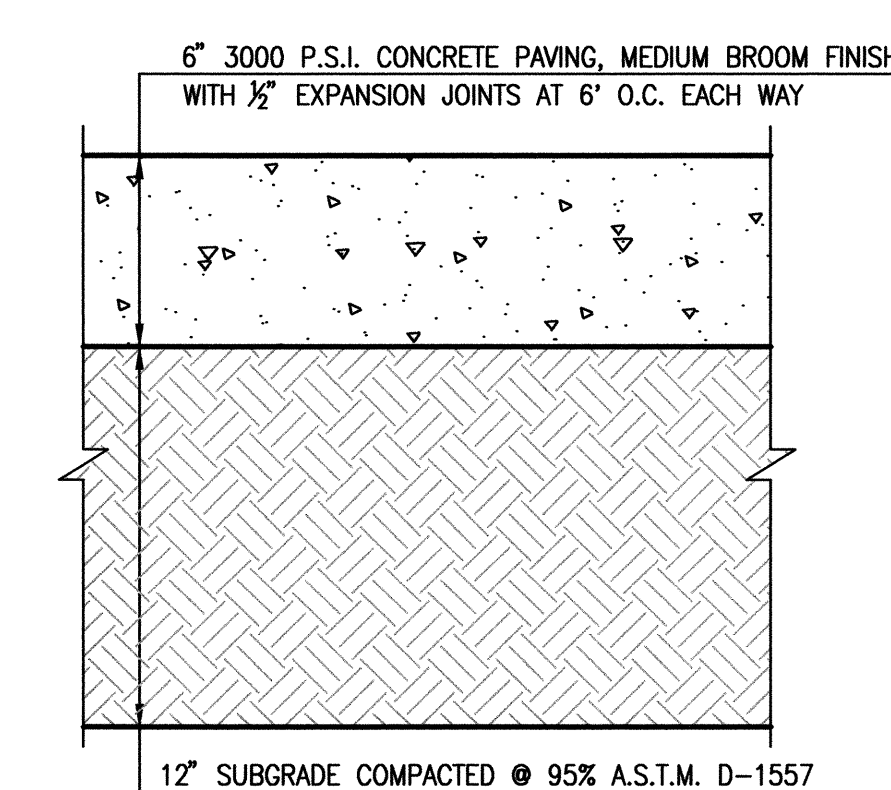
**PAVING PLAN
COAL AVENUE PEDESTRIAN MALL
HIGHLAND HIGH SCHOOL**

01-22-2012
09-07-2011
08-01-2011
JEFFREY G. MORTENSEN
NEW MEXICO
8547
REGISTERED PROFESSIONAL ENGINEER



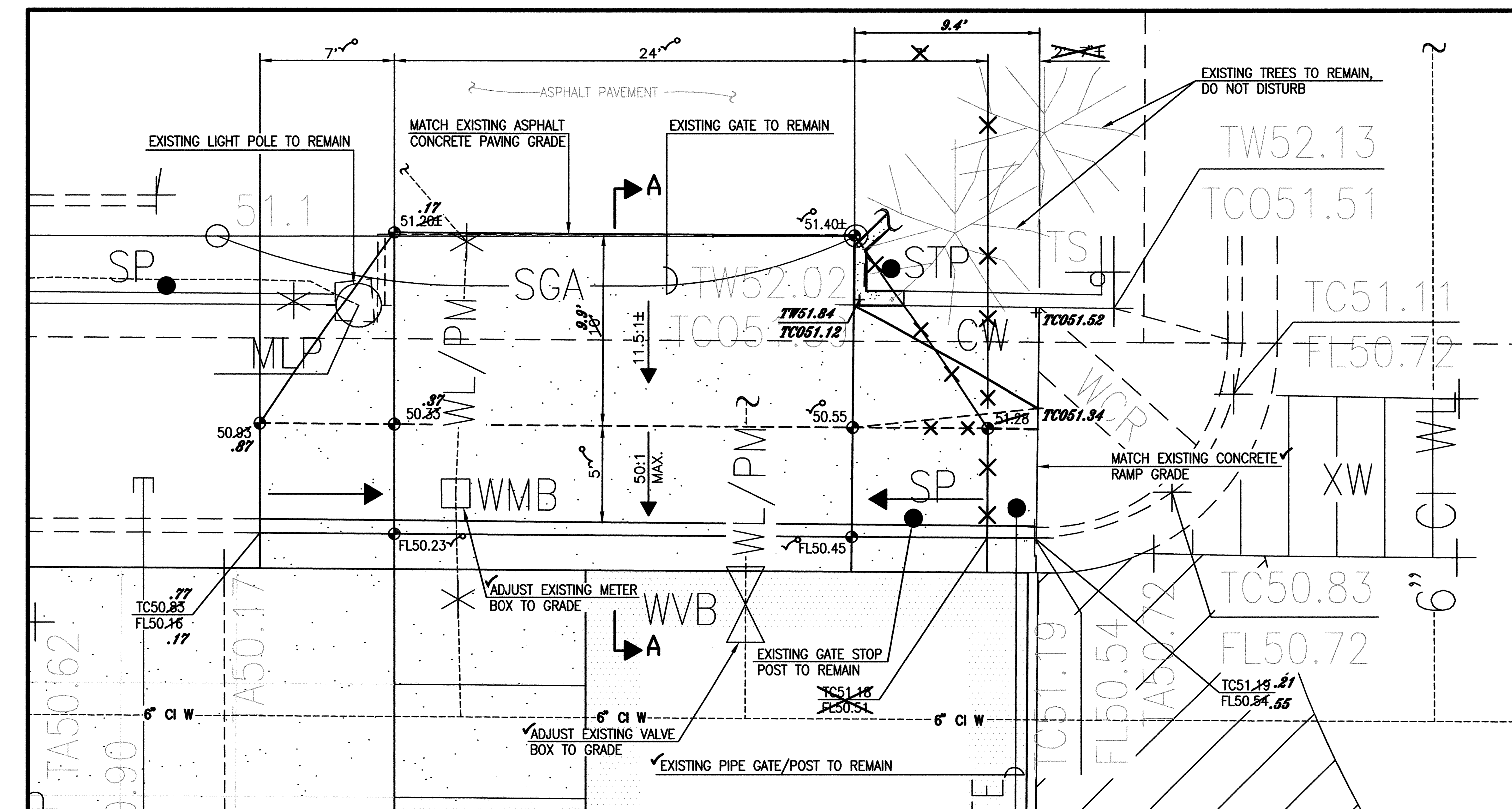
TYPICAL 4" CONCRETE SIDEWALK SECTION

SCALE: 1" = 6"



TYPICAL 6" CONCRETE PAVEMENT SECTION

SCALE: 1" = 6"



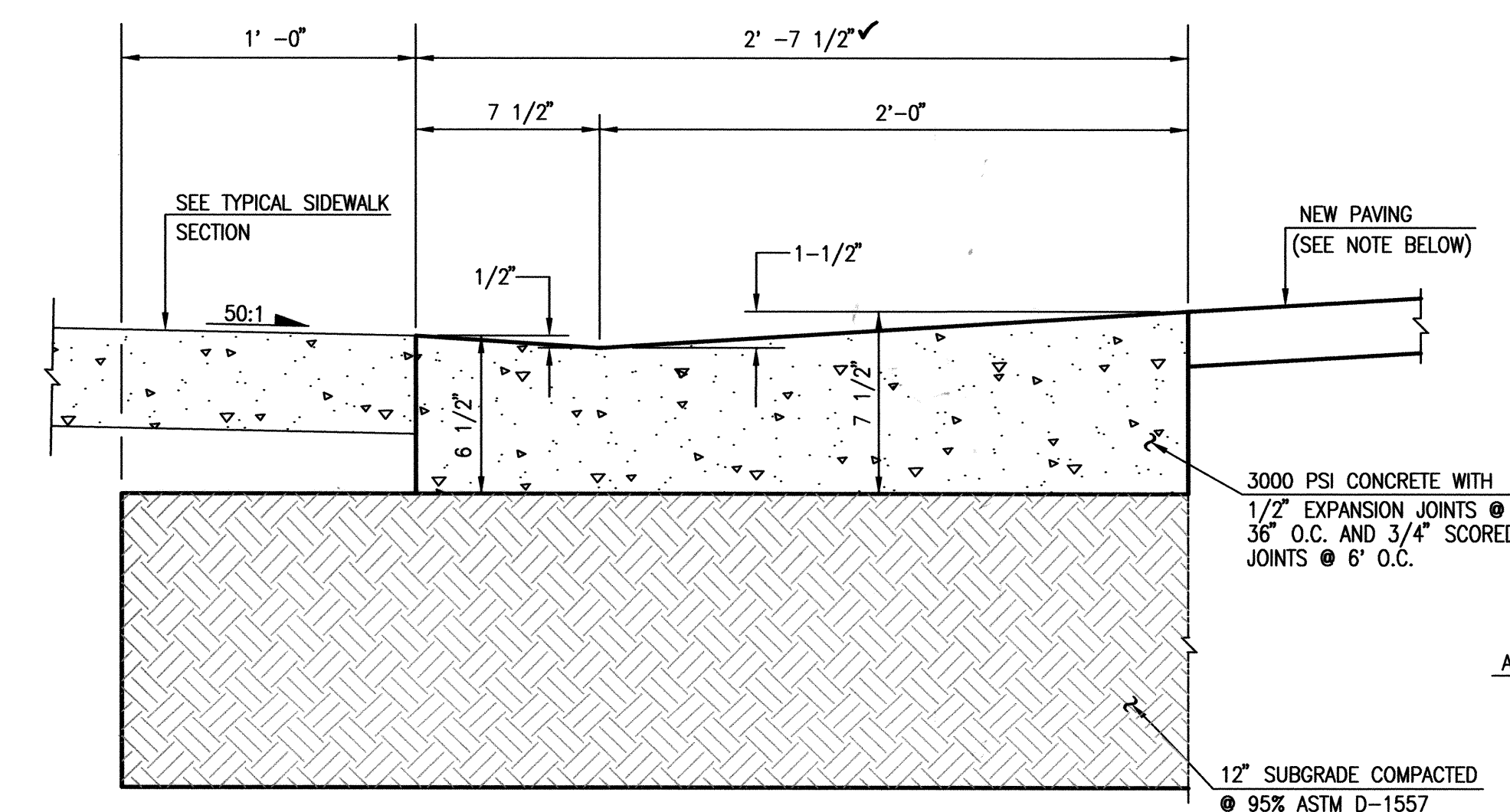
TYPICAL DRIVEPAD DETAIL

SCALE: 1" = 5'-0"

TYPICAL CURB & GUTTER SECTION

SCALE: 1" = 0'-6"

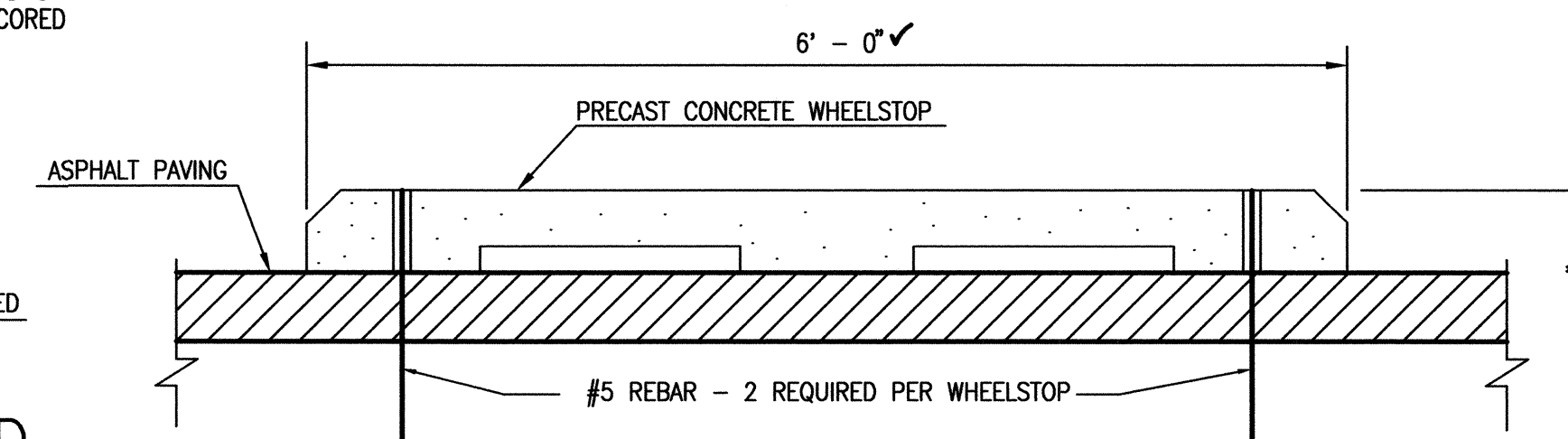
NOTE: NEW PAVING SHALL BE CONCRETE OR ASPHALT PER PAVING PLAN, SHEET 3



TYPICAL CURB & GUTTER AT ACCESS RAMP/DRIVEPAD

SCALE: 1" = 0'-6"

NOTE: NEW PAVING SHALL BE CONCRETE OR ASPHALT PER PAVING PLAN, SHEET 3

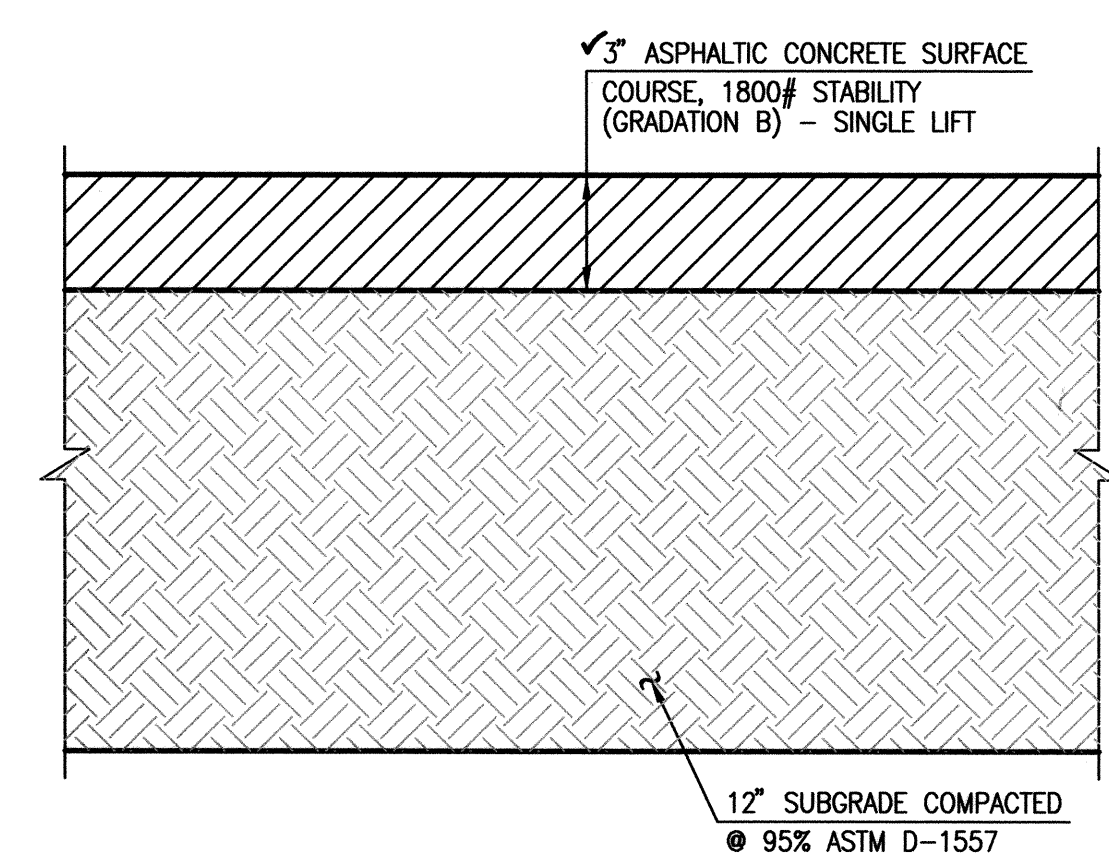


WHEEL STOP SECTION

SCALE: 1" = 1'-0"

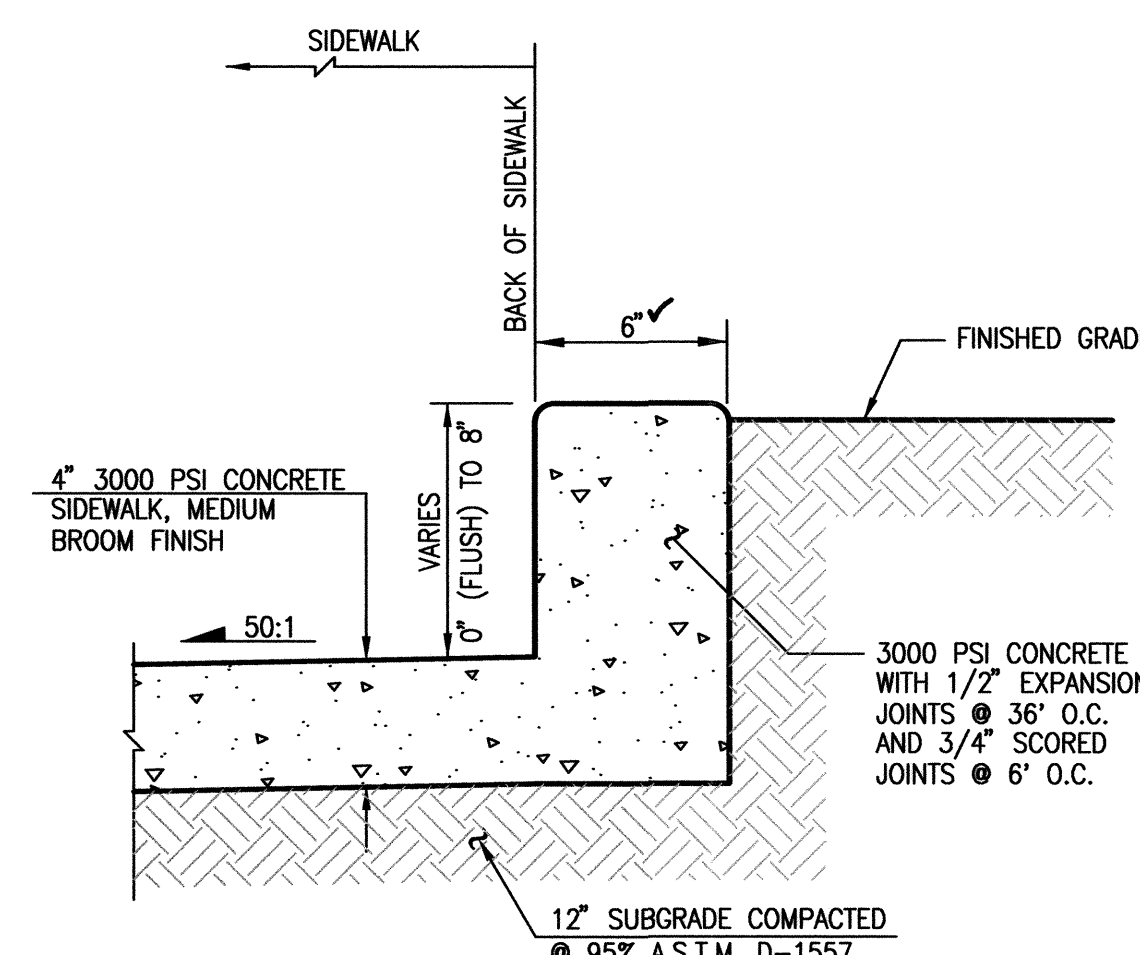
RECORD INFORMATION LEGEND

CONSTRUCT	RECORD INFORMATION (VERIFIED BY ENGINEER)
✓	AS-CONSTRUCTED = AS-DESIGNED (VERIFIED BY ENGINEER)
35' 42"	RECORD INFORMATION (VERIFIED BY ENGINEER)
+25.2	RECORD INFORMATION (VERIFIED BY ENGINEER)
28.98.42	RECORD INFORMATION (VERIFIED BY ENGINEER)
✓	AS-CONSTRUCTED = AS-DESIGNED (VERIFIED BY AS-BUILT SURVEY)
31' 31.8	RECORD INFORMATION FROM AS-BUILT SURVEY
+26.9	RECORD INFORMATION FROM AS-BUILT SURVEY
31.25.22	RECORD INFORMATION FROM AS-BUILT SURVEY



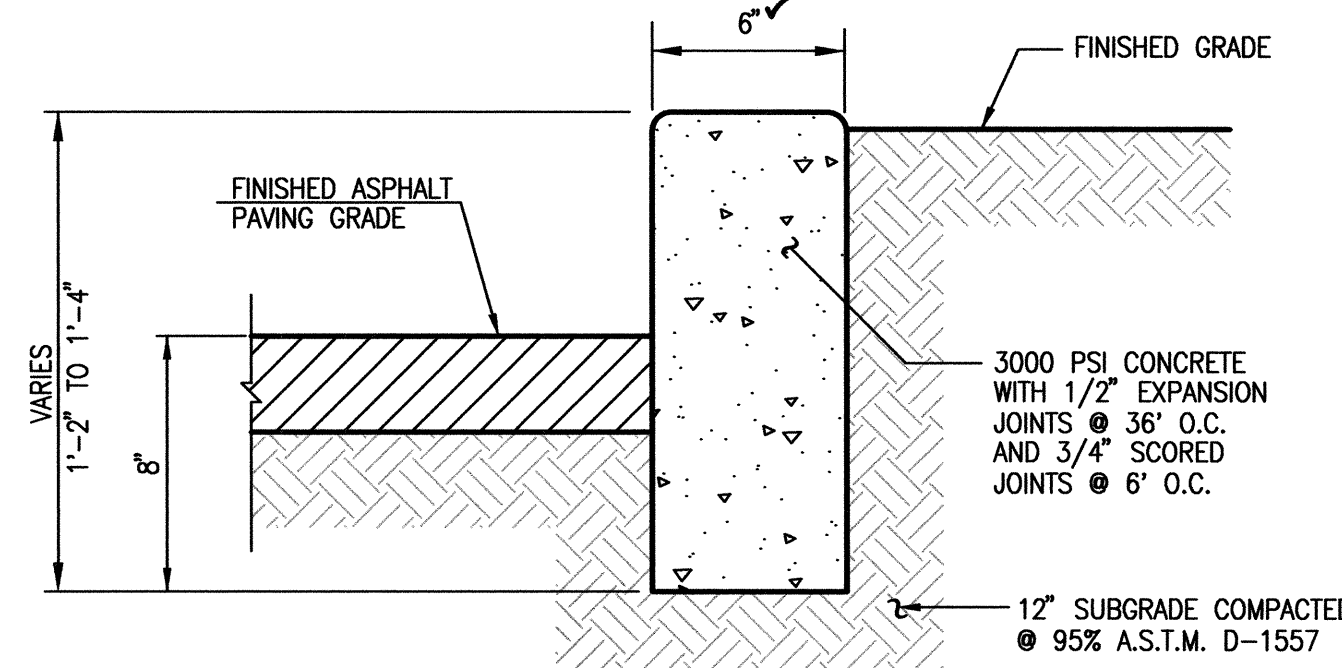
TYPICAL 3" ASPHALT PAVING SECTION

SCALE: 1" = 0' - 5"



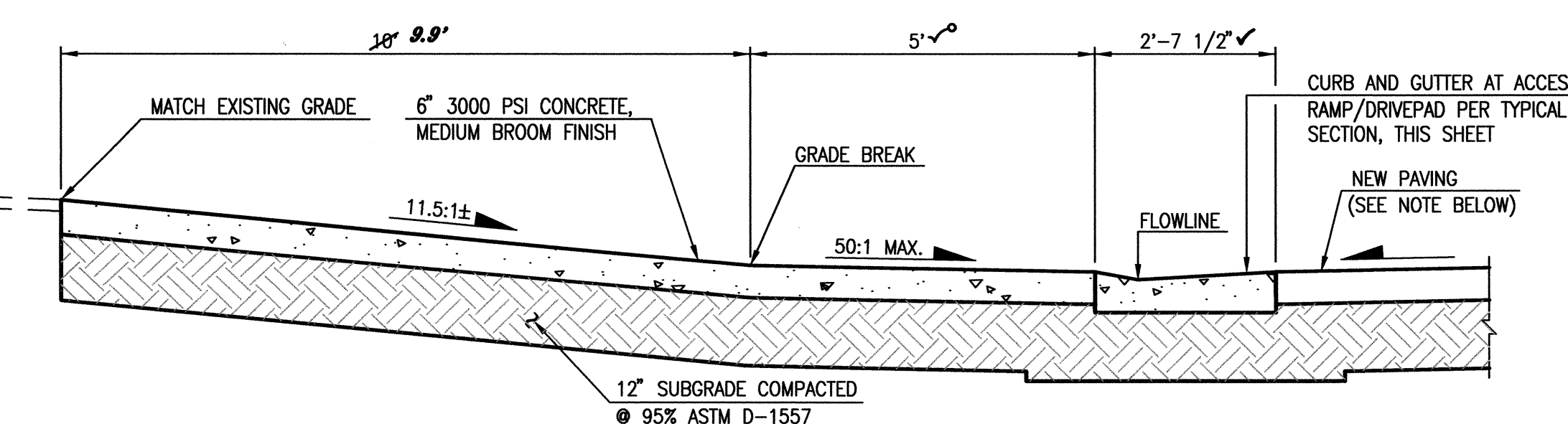
INTEGRAL HEADER CURB SECTION

SCALE: 1" = 0'-6"



HEADER CURB SECTION

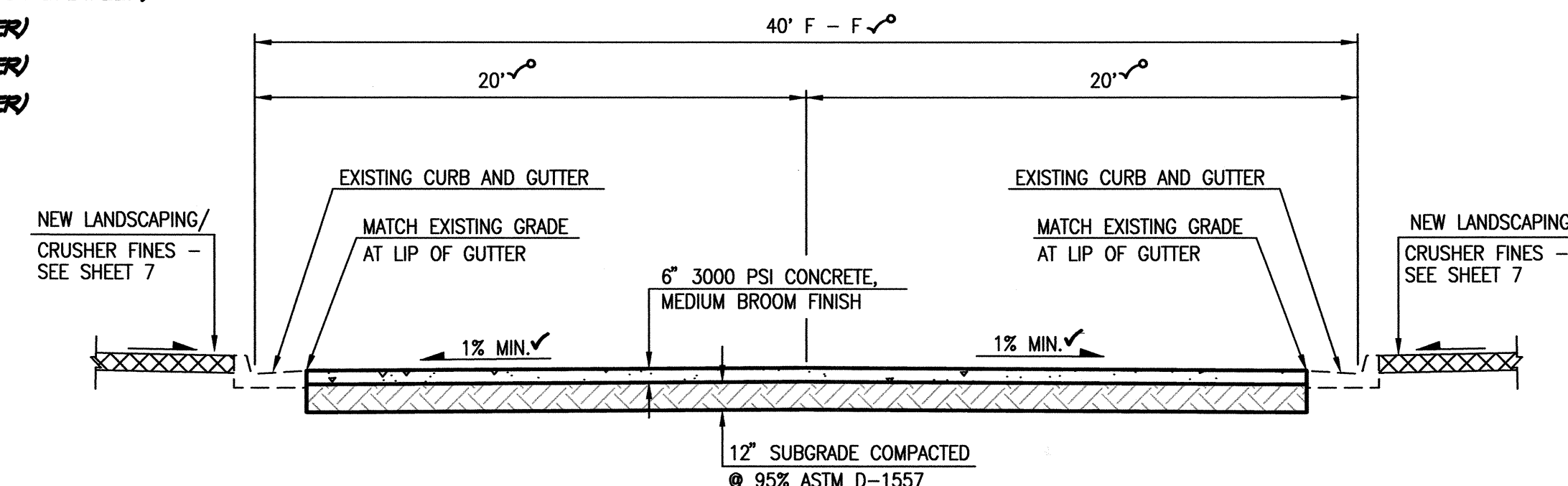
SCALE: 1" = 0'-6"



SECTION A - A

SCALE: 1" = 2'-0"

NOTE: NEW PAVING SHALL BE CONCRETE OR ASPHALT PER PAVING PLAN, SHEET 3



SECTION B - B

SCALE: 1" = 5'-0"

RECORD DRAWING FOR CERTIFICATION, SEE SHEET 1

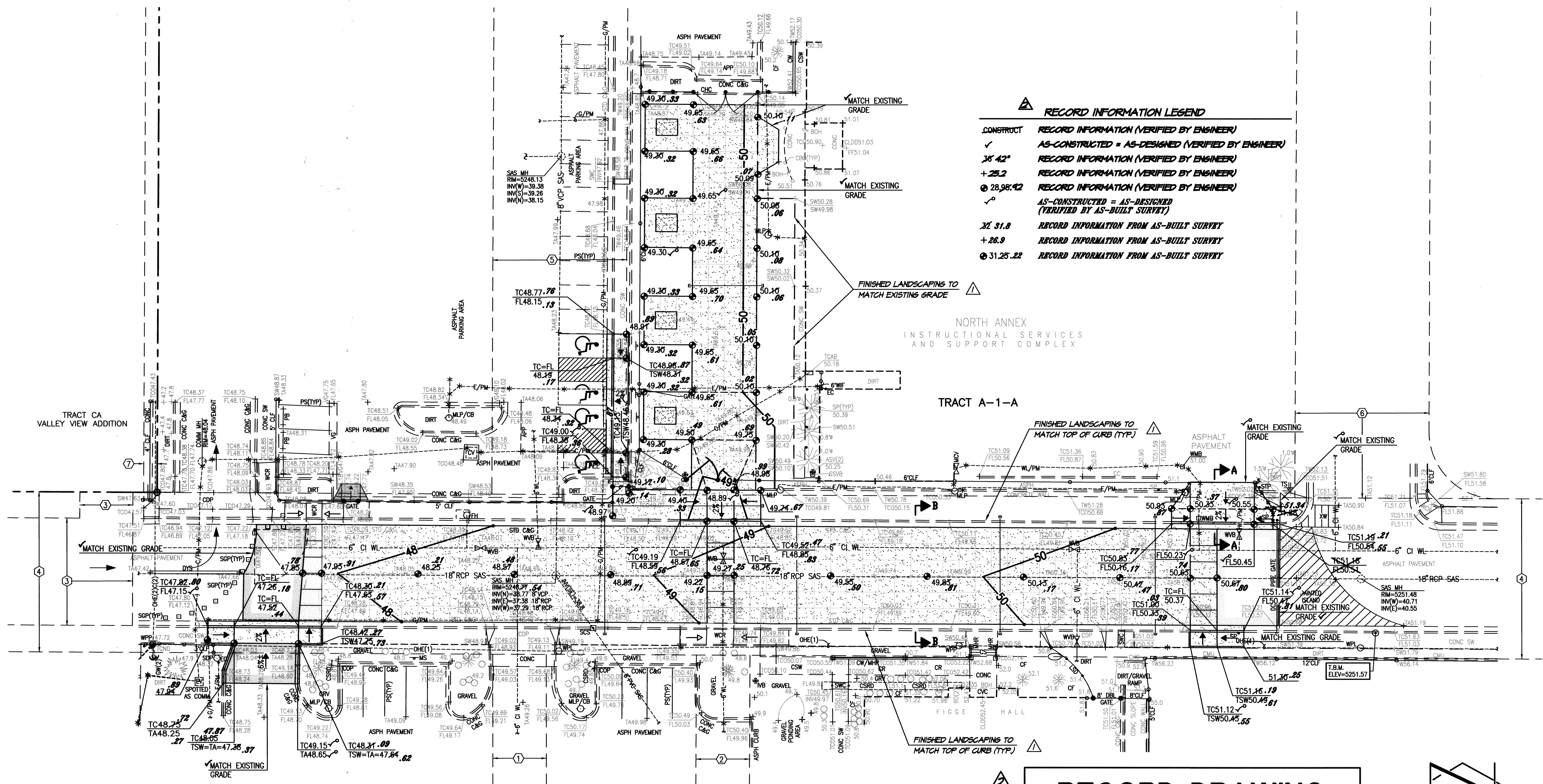
08-01-2011
JEFFREY G. MORTENSEN
REGISTERED PROFESSIONAL ENGINEER
NEW MEXICO
8547
01-22-2012

HIGH MESA Consulting Group

6010-B MIDWAY PARK BLVD. NE • ALBUQUERQUE, NEW MEXICO 87109
PHONE: 505.345.4250 • FAX: 505.345.4254 • www.highmesacg.com

**PAVING SECTIONS AND DETAILS
COAL AVENUE PEDESTRIAN MALL
HIGHLAND HIGH SCHOOL**

DESIGNED BY	J.G.M./J.D.S.	NO.	DATE	BY	J.D.S.	JOB NO.	2010.180.5
DRAWN BY	C.L.T./J.Y.R.	12/11	12/11	B.E.E.	RECORD DRAWING AND CERTIFICATION	DATE	08-2011
APPROVED BY	J.G.M.					SHEET	4 OF 8



B1 GRADING PLAN
SCALE: 1" = 20'

BENCHMARKS
PROJECT BENCHMARK
ACS 2" BRASS DISC SET STAMPED "6-K18A ACS" SET IN SIDEWALK AT THE INTERSECTION OF CENTRAL AVENUE AND JACKSON STREET.
ELEVATION = 5249.99 FEET (NAVD 1988)
T.B.M.
A MAG NAIL SET AT BACK OF CURB, AS SHOWN ON THIS DRAWING.
ELEVATION = 5251.57 FEET (NAVD 1988)

DESIGN SURVEY NOTE:
THIS IS NOT A BOUNDARY SURVEY. DATA IS SHOWN FOR ORIENTATION ONLY. BOUNDARY INFORMATION DEPICTED BY THIS PLAN IS BASED UPON AN UNRECORDED BOUNDARY SURVEY BY HIGH MESA CONSULTING GROUP, NMPS 11184, DATED 03-30-2010. THE TOPOGRAPHIC INFORMATION DEPICTED HEREON IS BASED UPON AN UPDATED TOPOGRAPHIC AND UTILITY SURVEY PREPARED BY HIGH MESA CONSULTING GROUP, NMPS 11184, DATED 05-17-2011. (2010.106.2)

- EASEMENT KEYED NOTES**
- ① 20' PUBLIC WATERLINE EASEMENT GRANTED BY PLAT 90C-142
 - ② 20' ABCWUA PUBLIC WATERLINE EASEMENT GRANTED BY PLAT 2008C-260
 - ③ PRIVATE ACCESS EASEMENT GRANTED BY PLAT 2009-96 TO SERVE TRACT CA, VALLEY VIEW ADDITION. MAINTENANCE SHALL BE THE RESPONSIBILITY OF THE OWNER OF TRACT A-1-A, HIGHLAND HIGH SCHOOL. COAL AVENUE S.E. BETWEEN JEFFERSON STREET S.E. AND JACKSON STREET S.E. VACATED BY 09DRB-70050. PUBLIC EASEMENTS RETAINED (CITY OF ALBUQUERQUE PUBLIC DRAINAGE, ABCWUA PUBLIC SANITARY SEWER AND PUBLIC WATER, PUBLIC SERVICE COMPANY OF NEW MEXICO, NEW MEXICO GAS COMPANY, QWEST TELECOMMUNICATIONS, AND COMCAST CABLE VISION OF NEW MEXICO, INC.). SUBSURFACE MAINTENANCE OF THE PUBLIC DRAINAGE EASEMENT IS THE RESPONSIBILITY OF THE CITY OF ALBUQUERQUE. SURFACE MAINTENANCE OF THE RETAINED EASEMENTS IS THE RESPONSIBILITY OF THE OWNER OF TRACT A-1-A, HIGHLAND HIGH SCHOOL.
 - ④ COAL AVENUE S.E. BETWEEN JEFFERSON STREET S.E. AND JACKSON STREET S.E. VACATED BY 09DRB-70050. PUBLIC EASEMENTS RETAINED (CITY OF ALBUQUERQUE PUBLIC DRAINAGE, ABCWUA PUBLIC SANITARY SEWER AND PUBLIC WATER, PUBLIC SERVICE COMPANY OF NEW MEXICO, NEW MEXICO GAS COMPANY, QWEST TELECOMMUNICATIONS, AND COMCAST CABLE VISION OF NEW MEXICO, INC.). SUBSURFACE MAINTENANCE OF THE PUBLIC DRAINAGE EASEMENT IS THE RESPONSIBILITY OF THE CITY OF ALBUQUERQUE. SURFACE MAINTENANCE OF THE RETAINED EASEMENTS IS THE RESPONSIBILITY OF THE OWNER OF TRACT A-1-A, HIGHLAND HIGH SCHOOL.
 - ⑤ MONROE STREET S.E. BETWEEN SILVER AVENUE S.E. AND COAL AVENUE S.E. VACATED BY 09DRB-70050. PUBLIC EASEMENTS RETAINED (ABCWUA PUBLIC SANITARY SEWER AND PUBLIC WATER, PUBLIC SERVICE COMPANY OF NEW MEXICO, NEW MEXICO GAS COMPANY, QWEST TELECOMMUNICATIONS, AND COMCAST CABLE VISION OF NEW MEXICO, INC.). SURFACE MAINTENANCE OF THE RETAINED EASEMENTS IS THE RESPONSIBILITY OF THE OWNER OF TRACT A-1-A, HIGHLAND HIGH SCHOOL.
 - ⑥ QUINCY STREET S.E. BETWEEN SILVER AVENUE S.E. AND COAL AVENUE S.E. VACATED BY 09DRB-70050. PUBLIC EASEMENTS RETAINED (ABCWUA PUBLIC SANITARY SEWER AND PUBLIC WATER, PUBLIC SERVICE COMPANY OF NEW MEXICO, NEW MEXICO GAS COMPANY, QWEST TELECOMMUNICATIONS, AND COMCAST CABLE VISION OF NEW MEXICO, INC.). SURFACE MAINTENANCE OF THE RETAINED EASEMENTS IS THE RESPONSIBILITY OF THE OWNER OF TRACT A-1-A, HIGHLAND HIGH SCHOOL.
 - ⑦ 5' UTILITY EASEMENT GRANTED BY PLAT A8-102 (OFFSITE)

RECORD DRAWING
FOR CERTIFICATION, SEE SHEET 1

DESIGN LEGEND

	PROPOSED CONCRETE		HIGH POINT
	PROPOSED COLORED CONCRETE		INVERT
	PROPOSED ASPHALT PAVING		TOP OF GRATE
	PROPOSED SPOT ELEVATION		TOP OF CURB
	EXISTING FLOWLINE ELEVATION		TOP OF ASPHALT PAVING
	PROPOSED CONTOUR		TOP OF SIDEWALK
	EXISTING CONTOUR		
	PROPOSED FLOWLINE		
	PROPOSED DIRECTION OF FLOW		
	EXISTING DIRECTION OF FLOW		
	RIGHT OF WAY LINE		
	PUBLIC EASEMENT LINE		

01-22-2012
09-07-2011
08-01-2011

JEFFREY G. MORTENSEN
REGISTERED PROFESSIONAL ENGINEER
NEW MEXICO
8547

HIGH MESA Consulting Group
6010-B MIDWAY PARK BLVD. NE • ALBUQUERQUE, NEW MEXICO 87109
PHONE: 505.345.4250 • FAX: 505.345.4254 • www.highmesacg.com

GRADING PLAN
COAL AVENUE PEDESTRIAN MALL
HIGHLAND HIGH SCHOOL

DESIGNED BY	DATE	BY	REVISIONS	JOB NO.
J.D.S.	9/11	J.D.S.	ADD LANDSCAPING NOTES	2010.180.5
DRAWN BY	12/11	B.E.E.	RECORD DRAWING AND CERTIFICATION	DATE
APPROVED BY		J.G.M.		09-2011
				SHEET 5 OF 8

DRAINAGE PLAN

I. INTRODUCTION AND EXECUTIVE SUMMARY

THIS PROJECT, LOCATED IN THE LOWER SOUTHEAST HEIGHTS OF THE ALBUQUERQUE METROPOLITAN AREA, REPRESENTS A MODIFICATION TO AN EXISTING SITE WITHIN AN INFILL AREA. THE PURPOSE OF THIS PROJECT IS TO RECONSTRUCT A PORTION OF VACATED COAL AVENUE SE BETWEEN THE NEW BUS LOOP AND PARENT DROP-OFF LANE AS A PEDESTRIAN MALL. THE NEW CONSTRUCTION WILL REPLACE EXISTING IMPERVIOUS AREA WITH CONCRETE PAVING AND LANDSCAPING THEREBY REDUCING THE AMOUNT OF RUNOFF GENERATED BY THIS PORTION OF THE HIGHLAND HIGH SCHOOL CAMPUS. THE PROPOSED PROJECT WILL ALSO IMPROVE THE HYDRAULIC CAPACITY OF VACATED COAL BY REDUCING THE HEIGHT OF THE CROWN AND BY REMOVING THE EXISTING SPEED HUMPS. THE PROPOSED DRAINAGE CONCEPT WILL BE THE CONTINUED FREE DISCHARGE TO THE HIGHLAND DETENTION POND WHILE ACCEPTING AND CONVEYING PUBLIC OFFSITE FLOWS FROM THE EAST.

THIS SUBMITTAL IS MADE IN SUPPORT OF A GRADING AND PAVING PERMIT WITHIN THE JURISDICTION OF THE CITY OF ALBUQUERQUE.

II. PROJECT DESCRIPTION

AS SHOWN BY THE VICINITY MAP, THE SCHOOL SITE IS LOCATED NEAR THE SOUTHEAST CORNER OF THE INTERSECTION OF SILVER AVENUE SE AND JACKSON STREET SE. THE CURRENT LEGAL DESCRIPTION IS TRACT A-1-A, HIGHLAND HIGH SCHOOL. AS SHOWN BY PANEL 354 OF 825 OF THE NATIONAL FLOOD INSURANCE PROGRAM FLOOD INSURANCE RATE MAPS PUBLISHED BY FEMA FOR BERNALILLO COUNTY, NEW MEXICO, SEPTEMBER 26, 2008, THIS SITE DOES NOT LIE WITHIN A DESIGNATED FLOOD HAZARD ZONE, WITH THE EXCEPTION OF A PORTION OF THE MAIN CAMPUS ALONG ZUNI ROAD SE WHICH IS IDENTIFIED AS AN AO ZONE WITH A DEPTH OF ONE (1) FOOT. THE PROPOSED CONSTRUCTION SITE, HOWEVER, DOES NOT LIE WITHIN OR ADJACENT TO THE DESIGNATED FLOOD HAZARD ZONE.

III. BACKGROUND DOCUMENTS

THE PREPARATION OF THIS PLAN RELIED UPON THE FOLLOWING DOCUMENTS:

- TOPOGRAPHIC SURVEY PREPARED BY HIGH MESA CONSULTING GROUP (NMPS 11184) DATED 05-17-2011. THIS REFERENCED SURVEY PROVIDES THE BASIS FOR THE EXISTING CONDITIONS OF THE PROJECT SITE.
- PLAT OF TRACT A-1-A, HIGHLAND HIGH SCHOOL, APPROVED BY DRB, PROJECT NUMBER 1007472, DATED 06/18/2009. THE REFERENCED PLATTING ACTION RETAINED THE VACATED COAL RIGHT-OF-WAY AS A PUBLIC DRAINAGE EASEMENT.
- PLATE K17, THE ALBUQUERQUE MASTER DRAINAGE STUDY (AMDS) PREPARED BY BOHANNAN-HUSTON FOR THE CITY OF ALBUQUERQUE DATED JANUARY, 1981. THE AMDS PROVIDES BACKGROUND INFORMATION RELATIVE TO THE CORRECTION OF FLOODING IN THE PROXIMITY OF THE HIGHLAND HIGH SCHOOL CAMPUS. IN PARTICULAR, THE COMPLETION OF THE HIGHLAND DETENTION POND HAS RELAXED DISCHARGE CONSTRAINTS THEREBY ALLOWING THE FREE DISCHARGE OF RUNOFF FROM THE HIGHLAND HIGH SCHOOL SITE.

IV. EXISTING CONDITIONS

THE PROJECT SITE CONSISTS OF THE FORMER COAL AVENUE SE BETWEEN THE NEW BUS LOOP AND THE NEW PARENT DROP-OFF LANE, BOTH CONSTRUCTED IN 2009 AND THE ENTRANCE TO THE HIGHLAND HIGH SCHOOL NORTH ANNEX. VACATED COAL CONSISTS OF A FORMER CURB AND GUTTER STREET WITH ASPHALT PAVING WITH PERIODIC SPEED HUMPS AND SIDEWALKS AT THE BACK OF CURB. THE ENTRANCE PLAZA TO THE HIGHLAND HIGH SCHOOL NORTH ANNEX CONSISTS OF A FORMER PAVED PARKING LOT NO LONGER IN USE. AT PRESENT, BOTH EXISTING FACILITIES DRAIN FROM EAST TO WEST WITH DEVELOPED RUNOFF EVENTUALLY BEING ROUTED THROUGH THE HIGHLAND DETENTION POND.

VACATED COAL AVENUE RECEIVES OFFSITE PUBLIC RUNOFF FROM THE EAST. EXCESS RUNOFF FROM JACKSON STREET SE ENTERS THE VACATED COAL AVENUE ROADWAY, A PUBLIC DRAINAGE EASEMENT FOR THE CITY OF ALBUQUERQUE. THE OFFSITE FLOWS ARE CONVEYED WEST WITHIN THE VACATED ROADWAY TO BE ROUTED THROUGH THE HIGHLAND DETENTION POND.

V. DEVELOPED CONDITIONS

THE PROPOSED CONSTRUCTION CONSISTS OF THE REMOVAL OF THE EXISTING ASPHALT PAVING AND SPEED HUMPS, AND THE CONCRETE SIDEWALKS ASSOCIATED WITH VACATED COAL AVENUE BETWEEN THE NEW BUS LOOP AND PARENT DROP-OFF LANE. THE EXISTING ASPHALT PAVING WILL BE REPLACED WITH CONCRETE PAVING AT A REDUCED (HALF) CROWN TO ENHANCE THE HYDRAULIC CAPACITY. THE SPEED HUMPS WILL NOT BE REPLACED. THE SIDEWALKS WILL BE REPLACED WITH LANDSCAPING (STREET TREES AND CRUSHER FINES) TO REDUCE IMPERVIOUSNESS. THE EXISTING CURB AND GUTTER WILL REMAIN TO DEFINE THE CHANNEL-LIKE CHARACTERISTICS OF THE FORMER PUBLIC STREET.

THE PROPOSED CONSTRUCTION ALSO CONSISTS OF THE REMOVAL OF THE EXISTING ASPHALT PAVING AT THE FRONT ENTRY TO THE NORTH ANNEX TO CREATE AN ENTRY PLAZA CONSISTING OF CONCRETE PAVING AND LANDSCAPING. THE NET RESULT WILL BE A DECREASE IN IMPERVIOUSNESS. THIS AREA WILL CONTINUE TO DRAIN FROM EAST TO WEST TOWARD THE NEW STUDENT PARKING LOT. A LANDSCAPE BUFFER WILL BE PROVIDED AT THE WEST EDGE TO PROVIDE AN AREA WHERE THE RUNOFF FROM MORE FREQUENT RAINFALL EVENTS CAN BE HARVESTED. THIS ALSO PROVIDED A DISCONNECT IN IMPERVIOUS AREA WITHIN THE HIGH SCHOOL CAMPUS.

OFFSITE FLOWS WILL CONTINUE TO BE ACCEPTED FROM JACKSON STREET SE AND CONVEYED THROUGH THE HIGH SCHOOL SITE VIA FORMER COAL AVENUE SE. BY RETAINING THE EXISTING CURB AND GUTTER AND REDUCING CROWN HEIGHT, THE CAPACITY OF THE PUBLIC DRAINAGE EASEMENT ASSOCIATED WITH THE VACATED STREET WILL BE INCREASED.

VI. GRADING PLAN

THE GRADING PLAN SHOWS 1.) EXISTING AND PROPOSED GRADES INDICATED BY SPOT ELEVATIONS AND CONTOURS AT 1'-0" INTERVALS, 2.) THE LIMIT AND CHARACTER OF THE EXISTING AND PROPOSED IMPROVEMENTS, AND 3.) CONTINUITY BETWEEN EXISTING AND PROPOSED GRADES. AS SHOWN BY THIS PLAN, THE PROPOSED GRADING WILL MAINTAIN THE CURRENT DRAINAGE PATTERN OF THE SITE WHEREBY RUNOFF FLOWS FROM EAST TO WEST, EVENTUALLY BEING ROUTED THROUGH THE HIGHLAND DETENTION POND.

VII. CALCULATIONS

THE CALCULATIONS CONTAINED HEREON ANALYZE THE EXISTING AND DEVELOPED CONDITIONS FOR THE 100-YEAR, 6-HOUR RAINFALL EVENT. THE PROCEDURE FOR 40 ACRE AND SMALLER BASINS, AS SET FORTH IN THE REVISION OF SECTION 22.2, HYDROLOGY OF THE DEVELOPMENT PROCESS MANUAL, VOLUME 2, DESIGN CRITERIA, DATED JANUARY 1993, HAS BEEN USED TO QUANTIFY THE PEAK RATE OF DISCHARGE AND VOLUME OF RUNOFF GENERATED. AS DEMONSTRATED BY THESE CALCULATIONS, THE PROPOSED IMPROVEMENTS WILL DECREASE THE PEAK RATE OF DISCHARGE AND VOLUME OF RUNOFF GENERATED BY THIS PORTION OF THE HIGHLAND HIGH SCHOOL CAMPUS. IN ADDITION, MANNING'S EQUATION FOR OPEN CHANNEL (STREET) FLOW WAS USED TO QUANTIFY THE HYDRAULIC CAPACITY OF VACATED COAL AVENUE IN THE EXISTING AND DEVELOPED CONDITIONS. AS DEMONSTRATED BY THE CALCULATIONS, REGRADING AND REPAVING THE STREET WITH A HALF-CROWN WILL INCREASE THE HYDRAULIC CAPACITY OF THE FORMER CITY STREET.

VIII. CONCLUSIONS

THE FOLLOWING CONCLUSIONS HAVE BEEN ESTABLISHED AS A RESULT OF THE EVALUATIONS CONTAINED HEREIN:

- THE PROPOSED IMPROVEMENTS WILL NOT ALTER THE EXISTING DRAINAGE PATTERNS OF THIS PORTION OF THE EXISTING HIGH SCHOOL CAMPUS
- THE PROPOSED IMPROVEMENTS WILL DECREASE THE IMPERVIOUSNESS OF THIS PORTION OF THE EXISTING HIGH SCHOOL CAMPUS
- THE PROPOSED IMPROVEMENTS WILL EFFECTIVELY REDUCE THE PEAK RATE OF DISCHARGE AND VOLUME OF RUNOFF GENERATED BY THIS PROJECT SITE
- THE PROPOSED IMPROVEMENTS WILL IMPROVE THE HYDRAULIC CAPACITY OF VACATED COAL AVENUE RETAINED AS A PUBLIC DRAINAGE EASEMENT
- THE PROPOSED IMPROVEMENTS WILL NOT BLOCK OR ADVERSELY AFFECT THE PUBLIC OFFSITE FLOWS THAT ENTER THE SITE FROM THE EAST
- THE PROPOSED IMPROVEMENTS WILL NOT ADVERSELY IMPACT DOWNSTREAM PROPERTIES OR DOWNSTREAM DRAINAGE CONDITIONS

CALCULATIONS

I. SITE CHARACTERISTICS

- A. PRECIPITATION ZONE = 2
- B. $P_{100, 6 \text{ HR}} = P_{360} = 2.35$
- C. TOTAL PROJECT AREA (A_T) = 33,470 SF
0.77 AC

D. LAND TREATMENTS

1. EXISTING LAND TREATMENT

TREATMENT	AREA (SF/AC)	%
B	640 / 0.02	3
D	32,830 / 0.75	97

2. DEVELOPED LAND TREATMENT

TREATMENT	AREA (SF/AC)	%
B	7,100 / 0.16	21
D	26,370 / 0.61	79

II. HYDROLOGY

A. EXISTING CONDITION

1. VOLUME

$$E_w = (E_A A_A + E_B A_B + E_C A_C + E_D A_D) / A_T$$
$$E_w = ((0.78 * 0.02) + (2.12 * 0.75)) / 0.77 = 2.09 \text{ IN}$$
$$V_{100, 6 \text{ HR}} = (E_w / 12) A_T = (2.09 / 12) 0.77 = 0.1341 \text{ AC-FT} = 5,840 \text{ CF}$$

2. PEAK DISCHARGE

$$Q_p = Q_{pA} A_A + Q_{pB} A_B + Q_{pC} A_C + Q_{pD} A_D$$
$$Q_p = Q_{100} = (2.28 * 0.02) + (4.70 * 0.75) = 3.6 \text{ CFS}$$

3. COAL AVENUE RUNOFF CAPACITY

- EXISTING FULL CROWN, 40' F-F STREET WIDTH

$$Q = 1.49/n * A * R^{2/3} * S^{1/2} \text{ - MANNING'S EQUATION FOR OPEN CHANNEL (STREET) FLOW}$$

$$n = 0.017$$
$$D = 0.6 \text{ FT (8" CURB FLOW DEPTH)}$$
$$A = 6.3 \text{ SF (HALF STREET WIDTH)}$$
$$P = 20.7 \text{ FT (HALF STREET WIDTH)}$$
$$R = 6.3 / 20.7 = 0.30 \text{ FT}$$
$$S = 0.0085 \text{ FT/FT}$$

$$Q = 1.49/0.017 * 6.3 * 0.30^{2/3} * 0.0085^{1/2} \text{ (HALF STREET WIDTH)}$$
$$Q = 22.8 \text{ CFS (HALF STREET WIDTH)}$$

$$2 * Q_{CAP} = 45.6 \text{ CFS (FULL STREET WIDTH)}$$

B. DEVELOPED CONDITION

1. VOLUME

$$E_w = (E_A A_A + E_B A_B + E_C A_C + E_D A_D) / A_T$$
$$E_w = ((0.78 * 0.16) + (2.12 * 0.61)) / 0.77 = 1.84 \text{ IN}$$
$$V_{100, 6 \text{ HR}} = (E_w / 12) A_T = (1.84 / 12) 0.77 = 0.1178 \text{ AC-FT} = 5,130 \text{ CF}$$

2. PEAK DISCHARGE

$$Q_p = Q_{pA} A_A + Q_{pB} A_B + Q_{pC} A_C + Q_{pD} A_D$$
$$Q_p = Q_{100} = (2.28 * 0.16) + (4.70 * 0.61) = 3.2 \text{ CFS}$$

3. COAL AVE RUNOFF CAPACITY

- DEVELOPED HALF CROWN, 40' F-F STREET WIDTH

$$Q = 1.49/n * A * R^{2/3} * S^{1/2} \text{ - MANNING'S EQUATION FOR OPEN CHANNEL (STREET) FLOW}$$

$$n = 0.017$$
$$D = 0.6 \text{ FT (8" CURB FLOW DEPTH)}$$
$$A = 8.0 \text{ SF (HALF STREET WIDTH)}$$
$$P = 20.8 \text{ FT (HALF STREET WIDTH)}$$
$$R = 8.0 / 20.8 = 0.38 \text{ FT}$$
$$S = 0.0085 \text{ FT/FT}$$

$$Q = 1.49/0.017 * 8.0 * 0.38^{2/3} * 0.0085^{1/2} \text{ (HALF STREET WIDTH)}$$
$$Q = 33.9 \text{ CFS (HALF STREET WIDTH)}$$

$$2 * Q_{CAP} = 67.8 \text{ CFS (FULL STREET WIDTH)}$$

C. COMPARISONS

1. VOLUME

$$\Delta V_{100, 6 \text{ HR}} = 5,130 - 5,840 = -710 \text{ CF (DECREASE)}$$

2. PEAK DISCHARGE

$$\Delta Q_{100} = 3.2 - 3.6 = -0.4 \text{ CFS (DECREASE)}$$

3. STREET FLOW CAPACITY

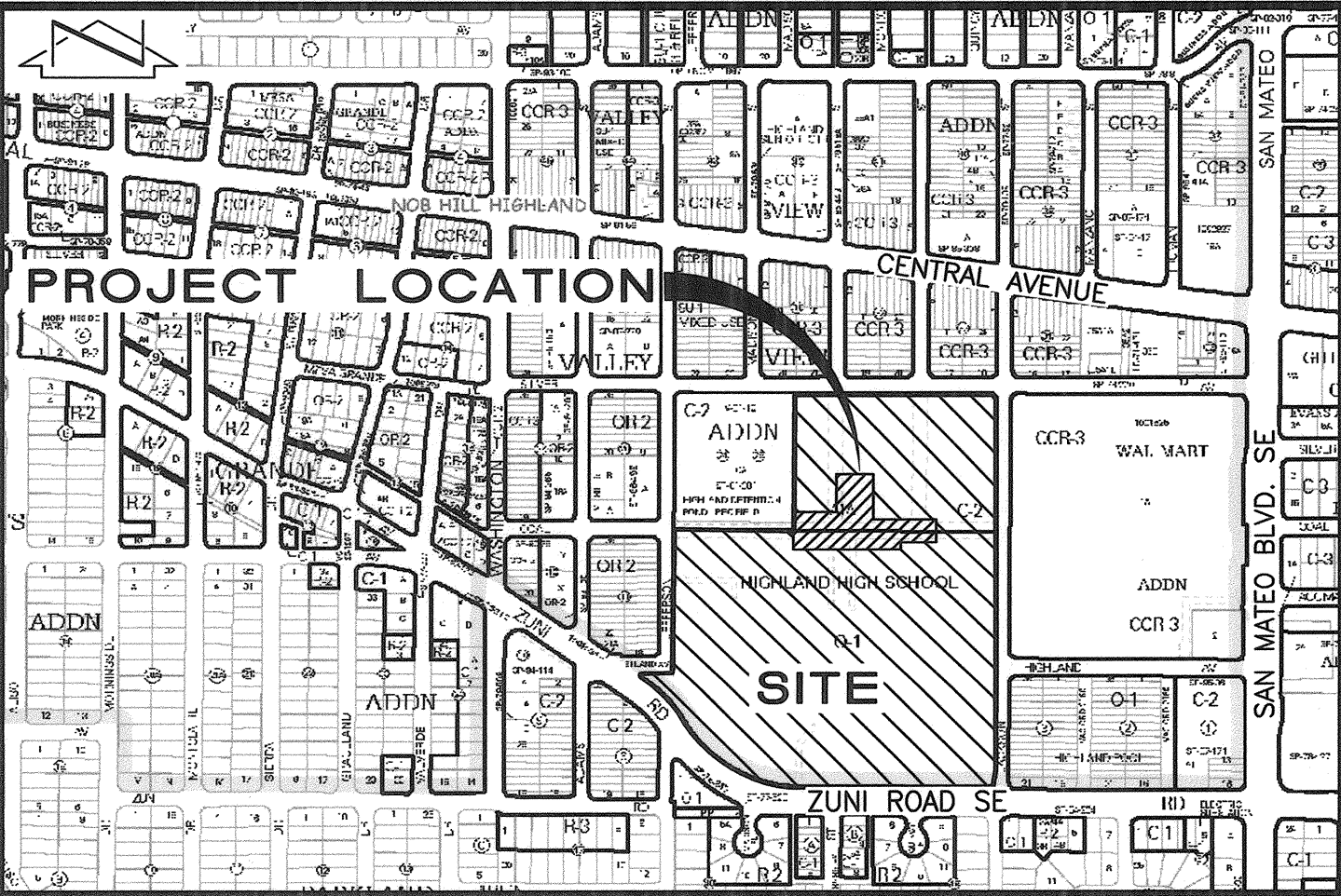
$$\Delta Q_{CAP} = 67.8 - 45.6 = 22.2 \text{ CFS (INCREASE)}$$

CONSTRUCTION NOTES

- TWO (2) WORKING DAYS PRIOR TO ANY EXCAVATION, CONTRACTOR MUST CONTACT NEW MEXICO ONE CALL SYSTEM 280-1990 (ALBUQUERQUE AREA), 1-800-321-ALERT(2537) (STATEWIDE), FOR LOCATION OF EXISTING UTILITIES AND ALBUQUERQUE PUBLIC SCHOOLS OR THEIR DESIGNATED SUBSURFACE UTILITY CONSULTANT FOR APS-OWNED UTILITIES.
- PRIOR TO CONSTRUCTION, THE CONTRACTOR SHALL EXCAVATE AND VERIFY THE HORIZONTAL AND VERTICAL LOCATION OF ALL POTENTIAL OBSTRUCTIONS. SHOULD A CONFLICT EXIST, THE CONTRACTOR SHALL NOTIFY THE ENGINEER IN WRITING SO THAT THE CONFLICT CAN BE RESOLVED WITH A MINIMUM AMOUNT OF DELAY. THE CONTRACTOR SHALL BE RESPONSIBLE FOR ALL INTERPRETATIONS IT MAKES WITHOUT FIRST CONTACTING THE ENGINEER AS REQUIRED ABOVE.
- ALL WORK ON THIS PROJECT SHALL BE PERFORMED IN ACCORDANCE WITH APPLICABLE FEDERAL, STATE AND LOCAL LAWS, RULES AND REGULATIONS CONCERNING CONSTRUCTION SAFETY AND HEALTH.
- ALL CONSTRUCTION WITHIN PUBLIC RIGHT-OF-WAY SHALL BE PERFORMED IN ACCORDANCE WITH APPLICABLE CITY OF ALBUQUERQUE STANDARDS AND PROCEDURES.
- IF ANY UTILITY LINES, PIPELINES, OR UNDERGROUND UTILITY LINES ARE SHOWN ON THESE DRAWINGS, THEY ARE SHOWN IN AN APPROXIMATE MANNER ONLY, AND SUCH LINES MAY EXIST WHERE NONE ARE SHOWN. IF ANY SUCH EXISTING LINES ARE SHOWN, THE LOCATION IS BASED UPON INFORMATION PROVIDED BY THE OWNER OF SAID UTILITY, AND THE INFORMATION MAY BE INCOMPLETE, OR MAY BE OBSOLETE BY THE TIME CONSTRUCTION COMMENCES. THE ENGINEER HAS CONDUCTED ONLY PRELIMINARY INVESTIGATION OF THE LOCATION, DEPTH, SIZE, OR TYPE OF EXISTING UTILITY LINES, PIPELINES, OR UNDERGROUND UTILITY LINES. THIS INVESTIGATION IS NOT CONCLUSIVE, AND MAY NOT BE COMPLETE. THEREFORE, MAKES NO REPRESENTATION PERTAINING THERETO, AND ASSUMES NO RESPONSIBILITY OR LIABILITY THEREFOR. THE CONTRACTOR SHALL INFORM ITSELF OF THE LOCATION OF ANY UTILITY LINE, PIPELINE, OR UNDERGROUND UTILITY LINE IN OR NEAR THE AREA OF THE WORK IN ADVANCE OF AND DURING EXCAVATION WORK. THE CONTRACTOR IS FULLY RESPONSIBLE FOR ANY AND ALL DAMAGE CAUSED BY ITS FAILURE TO LOCATE, IDENTIFY AND PRESERVE ANY AND ALL EXISTING UTILITIES, PIPELINES, AND UNDERGROUND UTILITY LINES. IN PLANNING AND CONDUCTING EXCAVATION, THE CONTRACTOR SHALL COMPLY WITH STATE STATUTES, MUNICIPAL AND LOCAL ORDINANCES, RULES AND REGULATIONS, IF ANY, PERTAINING TO THE LOCATION OF THESE LINES AND FACILITIES.
- THE DESIGN OF PLANTERS AND LANDSCAPED AREAS IS NOT PART OF THE PAVING PLAN. ALL PLANTERS AND LANDSCAPED AREAS ADJACENT TO THE BUILDING(S) SHALL BE PROVIDED WITH POSITIVE DRAINAGE TO AVOID ANY PONDING ADJACENT TO THE STRUCTURE. FOR CONSTRUCTION DETAILS, REFER TO PLANTING PLAN.

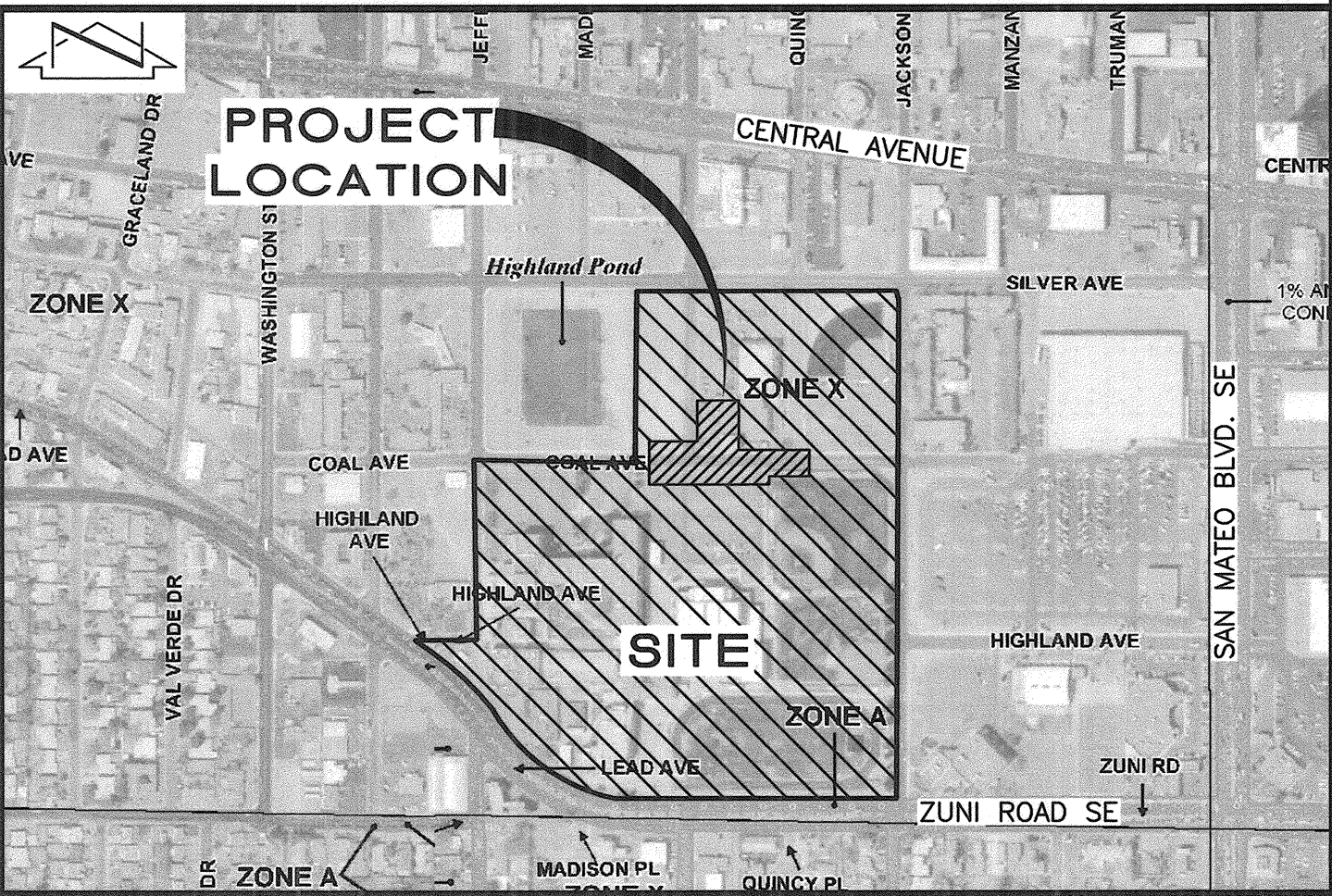
EROSION CONTROL NOTES

- THE CONTRACTOR SHALL ENSURE THAT NO SOIL ERODES FROM THE SITE INTO PUBLIC RIGHT-OF-WAY OR ONTO PRIVATE PROPERTY.
- THE CONTRACTOR SHALL PROMPTLY CLEAN UP ANY MATERIAL EXCAVATED WITHIN THE PUBLIC RIGHT-OF-WAY SO THAT THE EXCAVATED MATERIAL IS NOT SUSCEPTIBLE TO BEING WASHED DOWN THE STREET.
- WHEN APPLICABLE, CONTRACTOR SHALL SECURE "TOPSOIL DISTURBANCE PERMIT" FROM THE CITY AND/OR FILE A NOTICE OF INTENT (N.O.I.) WITH THE EPA PRIOR TO BEGINNING CONSTRUCTION.



VICINITY MAP

SCALE: 1" = 750'



F.I.R.M.

SCALE: 1" = 500'

PANELS 353 AND 354 OF 825

DATED SEPTEMBER 26, 2008

LEGAL DESCRIPTION

A PORTION OF TRACT A-1-A, HIGHLAND HIGH SCHOOL, ALBUQUERQUE, NEW MEXICO

BENCHMARKS

PROJECT BENCHMARK

ACS 2" BRASS DISC SET STAMPED "6-K18A ACS" SET IN SIDEWALK AT THE INTERSECTION OF CENTRAL AVENUE AND JACKSON STREET. ELEVATION = 5249.99 FEET (NAVD 1988)

T.B.M.

A MAG NAIL SET AT BACK OF CURB, AS SHOWN ON THIS DRAWING. ELEVATION = 5251.57 FEET (NAVD 1988)



RECORD DRAWING

01-22-2012
08-01-2011



HIGH MESA Consulting Group

6010-B MIDWAY PARK BLVD. NE • ALBUQUERQUE, NEW MEXICO 87109
PHONE: 505.345.4250 • FAX: 505.345.4254 • www.highmesacg.com

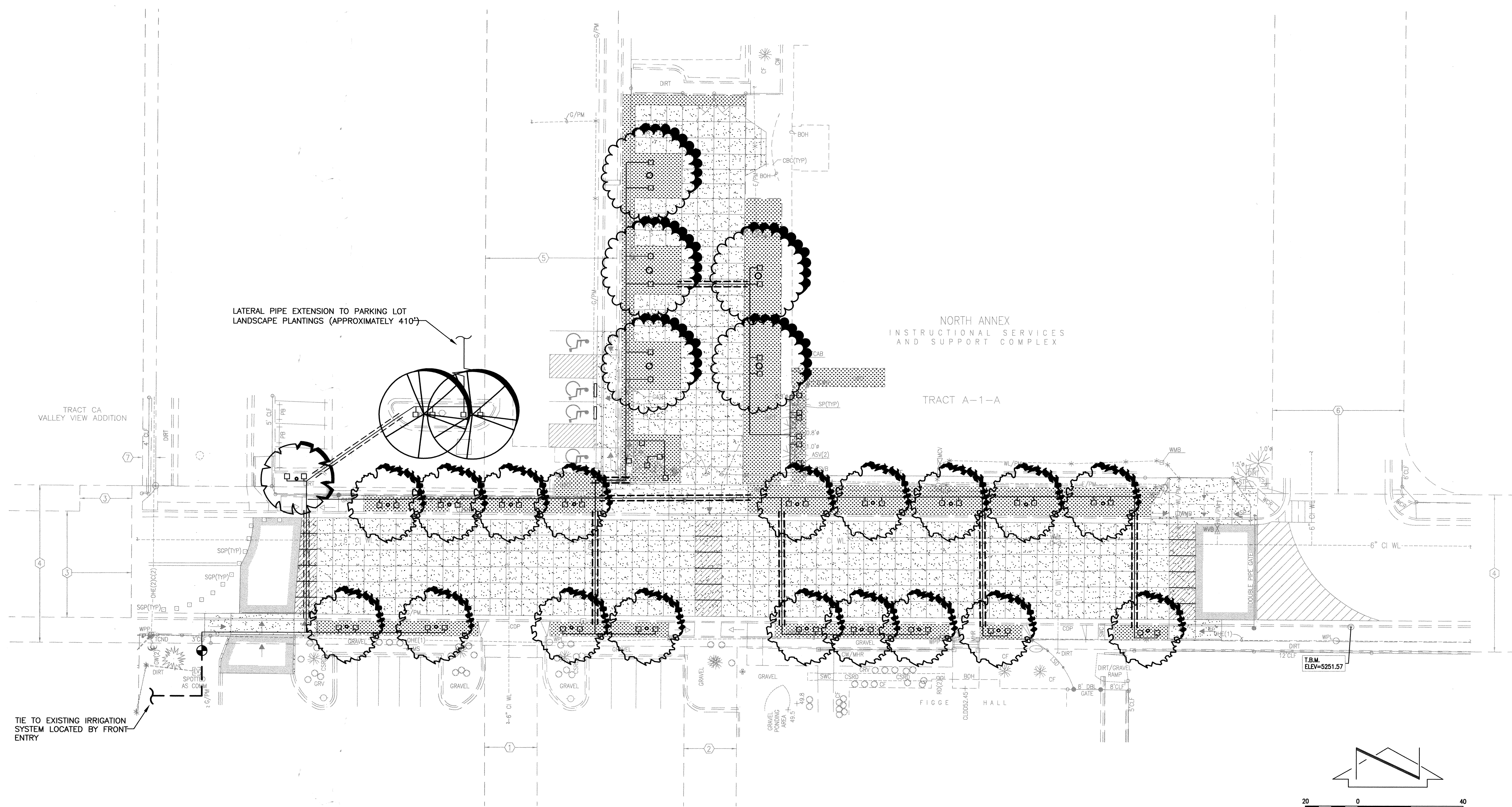
DRAINAGE PLAN AND CALCULATIONS
COAL AVENUE PEDESTRIAN MALL
HIGHLAND HIGH SCHOOL

DESIGNED BY J.D.S.

DRAWN BY C.L.T./J.Y.R.

APPROVED BY J.G.M.

REVISIONS				JOB NO.
NO.	DATE	BY		2010.180.5
1	12/11	B.E.E.	RECORD DRAWING	DATE 08-2011
				SHEET 6 OF 8



IRRIGATION LEGEND

SYMBOL	DESCRIPTION
---	SCHEDULE 40 PVC LATERAL PIPE
---	NEW 2" SCHEDULE 40 PVC MAINLINE
---	EXISTING CLASS 200 PVC PIPE SLEEVE
---	NEW CLASS 200 PVC PIPE SLEEVE
□	RAINBIRD 1400 SERIES BUBBLER (.50 GPM)
⊕	NEW 2" WEATHERMATIC REMOTE CONTROL VALVE

EASEMENT KEYED NOTES

- ① 20' PUBLIC WATERLINE EASEMENT GRANTED BY PLAT 90C-142
- ② 20' ABCWUA PUBLIC WATERLINE EASEMENT GRANTED BY PLAT 2008C-260
- ③ PRIVATE ACCESS EASEMENT GRANTED BY PLAT 2009-96 TO SERVE TRACT CA, VALLEY VIEW ADDITION. MAINTENANCE SHALL BE THE RESPONSIBILITY OF THE OWNER OF TRACT A-1-A, HIGHLAND HIGH SCHOOL. COAL AVENUE S.E. BETWEEN JEFFERSON STREET S.E. AND JACKSON STREET S.E. VACATED BY 09DRB-70050. PUBLIC EASEMENTS RETAINED (CITY OF ALBUQUERQUE PUBLIC DRAINAGE, ABCWUA PUBLIC SANITARY SEWER AND PUBLIC WATER, PUBLIC SERVICE COMPANY OF NEW MEXICO, NEW MEXICO GAS COMPANY, QWEST TELECOMMUNICATIONS, AND COMCAST CABLE VISION OF NEW MEXICO, INC.). SUBSURFACE MAINTENANCE OF THE PUBLIC DRAINAGE EASEMENT IS THE RESPONSIBILITY OF THE CITY OF ALBUQUERQUE. SURFACE MAINTENANCE OF THE RETAINED EASEMENTS IS THE RESPONSIBILITY OF THE OWNER OF TRACT A-1-A, HIGHLAND HIGH SCHOOL.
- ④ COAL AVENUE S.E. BETWEEN JEFFERSON STREET S.E. AND JACKSON STREET S.E. VACATED BY 09DRB-70050. PUBLIC EASEMENTS RETAINED (CITY OF ALBUQUERQUE PUBLIC DRAINAGE, ABCWUA PUBLIC SANITARY SEWER AND PUBLIC WATER, PUBLIC SERVICE COMPANY OF NEW MEXICO, NEW MEXICO GAS COMPANY, QWEST TELECOMMUNICATIONS, AND COMCAST CABLE VISION OF NEW MEXICO, INC.). SUBSURFACE MAINTENANCE OF THE PUBLIC DRAINAGE EASEMENT IS THE RESPONSIBILITY OF THE CITY OF ALBUQUERQUE. SURFACE MAINTENANCE OF THE RETAINED EASEMENTS IS THE RESPONSIBILITY OF THE OWNER OF TRACT A-1-A, HIGHLAND HIGH SCHOOL.
- ⑤ MONROE STREET S.E. BETWEEN SILVER AVENUE S.E. AND COAL AVENUE S.E. VACATED BY 09DRB-70050. PUBLIC EASEMENTS RETAINED (ABCWUA PUBLIC SANITARY SEWER AND PUBLIC WATER, PUBLIC SERVICE COMPANY OF NEW MEXICO, NEW MEXICO GAS COMPANY, QWEST TELECOMMUNICATIONS, AND COMCAST CABLE VISION OF NEW MEXICO, INC.). SURFACE MAINTENANCE OF THE RETAINED EASEMENTS IS THE RESPONSIBILITY OF THE OWNER OF TRACT A-1-A, HIGHLAND HIGH SCHOOL.
- ⑥ QUINCY STREET S.E. BETWEEN SILVER AVENUE S.E. AND COAL AVENUE S.E. VACATED BY 09DRB-70050. PUBLIC EASEMENTS RETAINED (ABCWUA PUBLIC SANITARY SEWER AND PUBLIC WATER, PUBLIC SERVICE COMPANY OF NEW MEXICO, NEW MEXICO GAS COMPANY, QWEST TELECOMMUNICATIONS, AND COMCAST CABLE VISION OF NEW MEXICO, INC.). SURFACE MAINTENANCE OF THE RETAINED EASEMENTS IS THE RESPONSIBILITY OF THE OWNER OF TRACT A-1-A, HIGHLAND HIGH SCHOOL.
- ⑦ 5' UTILITY EASEMENT GRANTED BY PLAT A8-102 (OFFSITE)



RECORD DRAWING

**WESTWIND LANDSCAPE
CONSTRUCTION INC.**

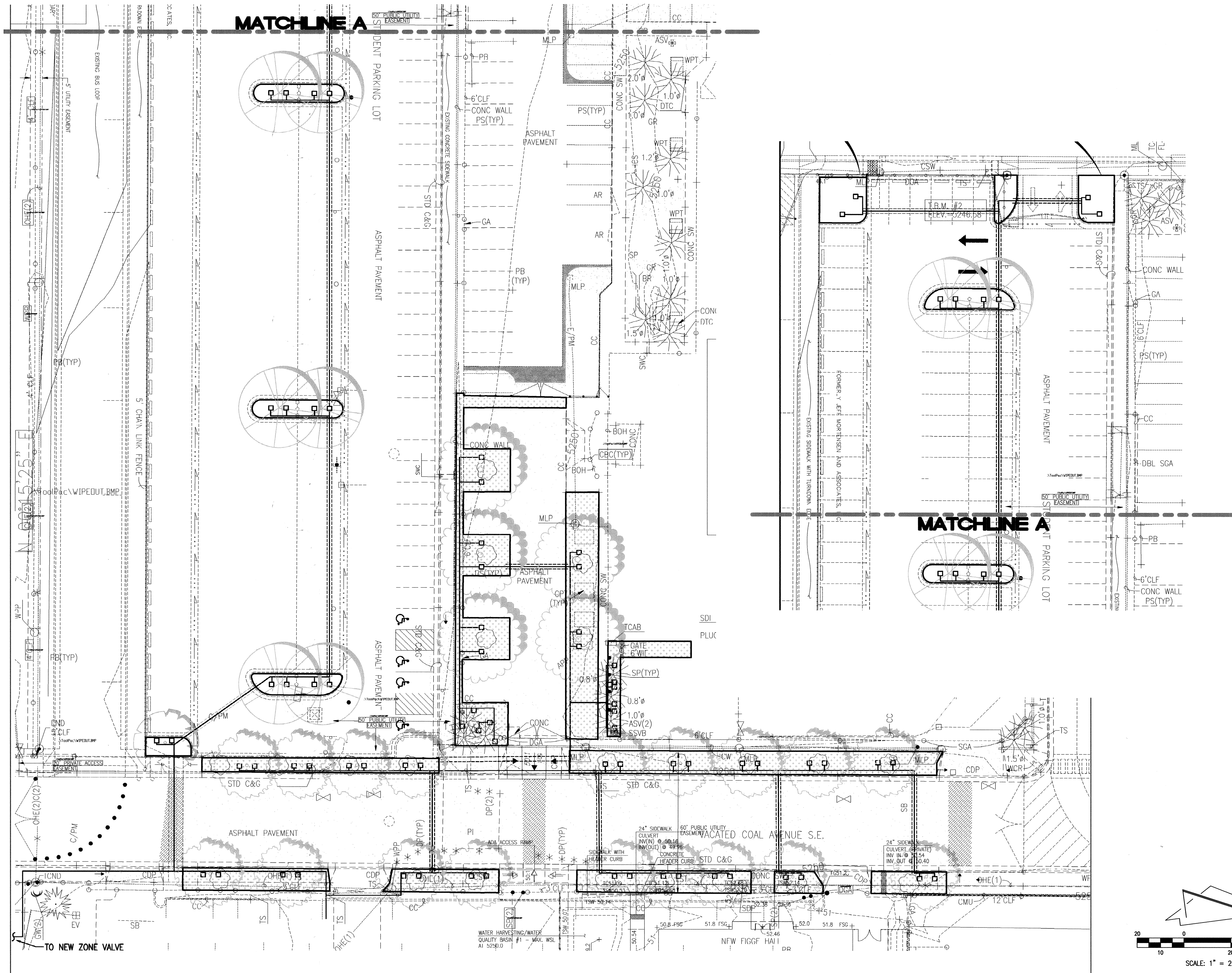
2739 VASSAR PLACE, NE
ALBUQUERQUE, NM 87107
PHONE: 505-881-8925
FAX: 505-883-7052

HIGH MESA Consulting Group

6010-B MIDWAY PARK BLVD. NE • ALBUQUERQUE, NEW MEXICO 87109
PHONE: 505.345.4250 • FAX: 505.345.4254 • www.highmesacg.com

**IRRIGATION PLAN
COAL AVENUE PEDESTRIAN MALL
HIGHLAND HIGH SCHOOL**

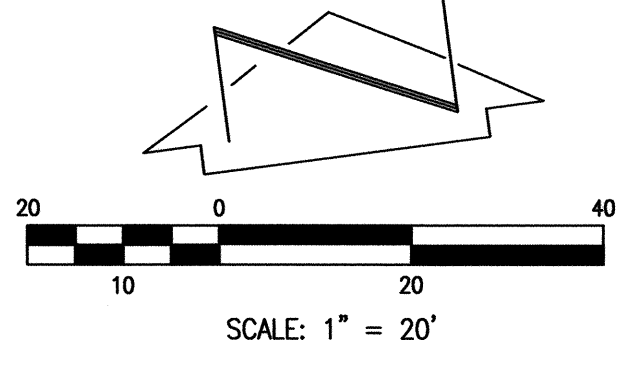
DESIGNED BY	DATE	BY	REVISIONS	JOB NO.
W.L.C.I.	4/11	J.D.S.	ADD THIS SHEET	2010.180.5
DRAWN BY	4/12	B.E.E.	RECORD DRAWING	DATE
APPROVED BY				09-2011
				SHEET 7 OF 8



IRRIGATION LEGEND	
SYMBOL	DESCRIPTION
	SCHEDULE 40 PVC LATERAL PIPE
	EXISTING CLASS 200 PVC PIPE SLEEVE
	NEW CLASS 200 PVC PIPE SLEEVE
	RAINBIRD 1400 SERIES BUBBLER (.50 GPM)

IRRIGATION RECORD DRAWING
WESTWIND LANDSCAPE CONSTRUCTION
2739 VASSAR PLACE, N.E.
ALBUQUERQUE, NM 87109
(505) 881-8925
DATE OF INSTALLATION
JANUARY 2012

RECORD DRAWING



WESTWIND LANDSCAPE CONSTRUCTION INC.
2739 VASSAR PLACE, NE
ALBUQUERQUE, NM 87107
PHONE: 505-881-8925
FAX: 505-883-7052

**IRRIGATION PLAN - STUDENT LOT
COAL AVENUE PEDESTRIAN MALL
HIGHLAND HIGH SCHOOL**

DESIGNED BY	W.L.C.I.	NO.	DATE	BY	REVISIONS	JOB NO.
DRAWN BY	W.L.C.I.	1/12	B.E.E.	RECORD DRAWING		2010.180.5
APPROVED BY	W.L.C.I.					DATE 01-2012
						SHEET 1 OF 2

File Path: P:\VIA 2010\180.5\180.5-2\180.5-2.dwg | Plot Date: 01-19-2012
File Name: 101805-IRR-R2.DWG | Plot Time: 4:32 pm

HIGH MESA Consulting Group
6010-B MIDWAY PARK BLVD. NE • ALBUQUERQUE, NEW MEXICO 87109
PHONE: 505.345.4250 • FAX: 505.345.4254 • www.highmesacg.com

