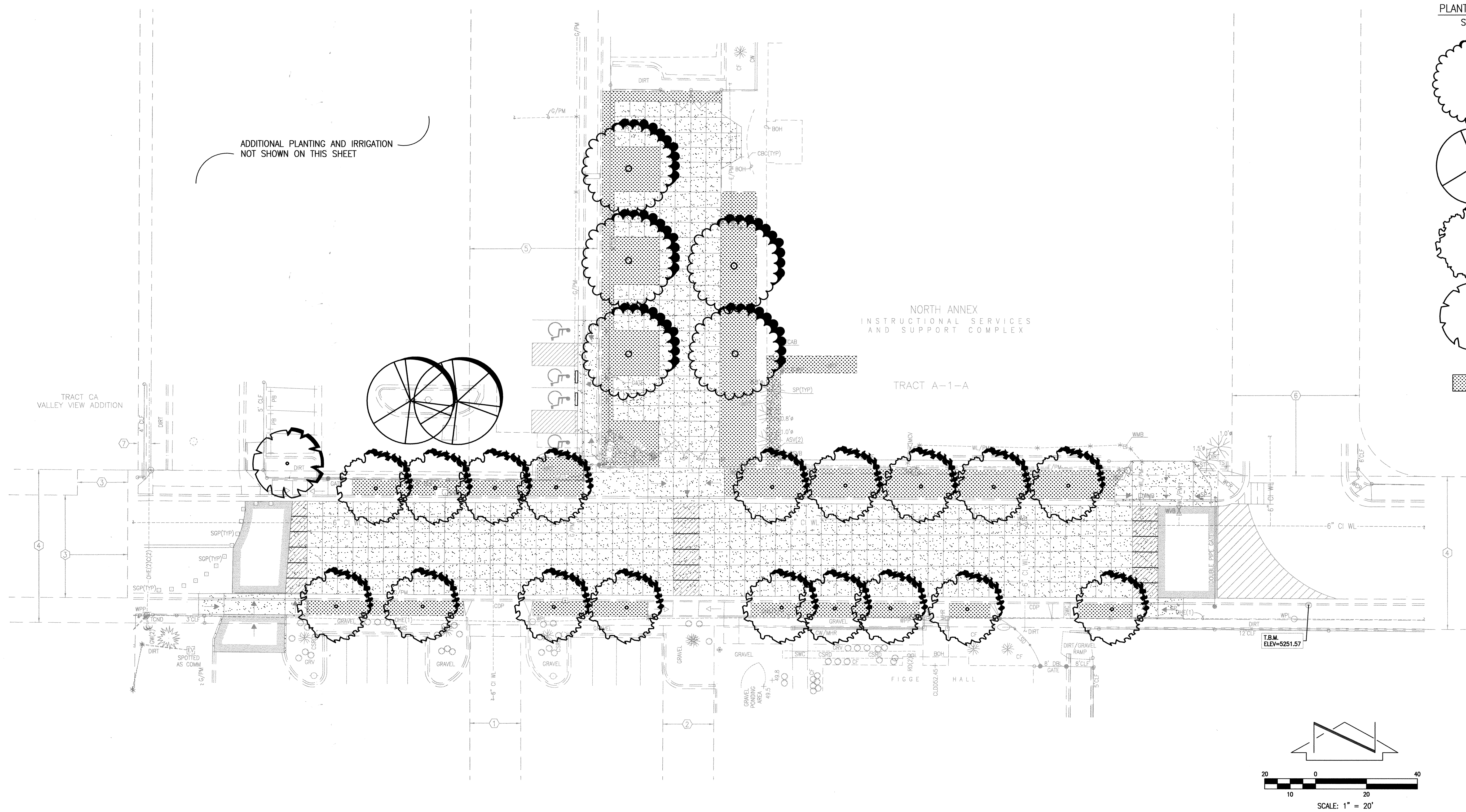


PLANT LIST			
SYMBOL	COMMON NAME BOTANICAL NAME	QTY	SIZE
	AUTUMN PURPLE ASH FRAXINUS AMERICANA	5	2-1/2" CAL
	FRAXINUS PENNSYLVANICA URBANITE ASH	8	2" CAL
	IMPERIAL HONEYLOCUST GLEDITSIA TRIACANTHOS	18	2-1/2" CAL
	CELTIS OCCIDENTALIS COMMON HACKBERRY	3	2-1/2" CAL
	CRUSHER FINES		



# EASEMENT KEYED NOTES

- 20' PUBLIC WATERLINE EASEMENT GRANTED BY PLAT 90C-142
- 20' ABCWUA PUBLIC WATERLINE EASEMENT GRANTED BY PLAT 2008C-260
- PRIVATE ACCESS EASEMENT GRANTED BY PLAT 2009-96 TO SERVE TRACT CA, VALLEY VIEW ADDITION. MAINTENANCE SHALL BE THE RESPONSIBILITY OF THE OWNER OF TRACT A-1-A, HIGHLAND HIGH SCHOOL. COAL AVENUE S.E. BETWEEN JEFFERSON STREET S.E. AND JACKSON STREET S.E. VACATED BY 09DRB-70050. PUBLIC EASEMENTS RETAINED (CITY OF ALBUQUERQUE PUBLIC DRAINAGE, ABCWUA PUBLIC SANITARY SEWER AND PUBLIC WATER, PUBLIC SERVICE COMPANY OF NEW MEXICO, NEW MEXICO GAS COMPANY, QWEST TELECOMMUNICATIONS, AND COMCAST CABLE VISION OF NEW MEXICO, INC.). SUBSURFACE MAINTENANCE OF THE PUBLIC DRAINAGE EASEMENT IS THE RESPONSIBILITY OF THE CITY OF ALBUQUERQUE. SURFACE MAINTENANCE OF THE RETAINED EASEMENTS IS THE RESPONSIBILITY OF THE OWNER OF TRACT A-1-A, HIGHLAND HIGH SCHOOL.
- COAL AVENUE S.E. BETWEEN JEFFERSON STREET S.E. AND JACKSON STREET S.E. VACATED BY 09DRB-70050. PUBLIC EASEMENTS RETAINED (CITY OF ALBUQUERQUE PUBLIC DRAINAGE, ABCWUA PUBLIC SANITARY SEWER AND PUBLIC WATER, PUBLIC SERVICE COMPANY OF NEW MEXICO, NEW MEXICO GAS COMPANY, QWEST TELECOMMUNICATIONS, AND COMCAST CABLE VISION OF NEW MEXICO, INC.). SUBSURFACE MAINTENANCE OF THE PUBLIC DRAINAGE EASEMENT IS THE RESPONSIBILITY OF THE CITY OF ALBUQUERQUE. SURFACE MAINTENANCE OF THE RETAINED EASEMENTS IS THE RESPONSIBILITY OF THE OWNER OF TRACT A-1-A, HIGHLAND HIGH SCHOOL.
- MONROE STREET S.E. BETWEEN SILVER AVENUE S.E. AND COAL AVENUE S.E. VACATED BY 09DRB-70050. PUBLIC EASEMENTS RETAINED (ABCWUA PUBLIC SANITARY SEWER AND PUBLIC WATER, PUBLIC SERVICE COMPANY OF NEW MEXICO, NEW MEXICO GAS COMPANY, QWEST TELECOMMUNICATIONS, AND COMCAST CABLE VISION OF NEW MEXICO, INC.). SURFACE MAINTENANCE OF THE RETAINED EASEMENTS IS THE RESPONSIBILITY OF THE OWNER OF TRACT A-1-A, HIGHLAND HIGH SCHOOL.
- QUINCY STREET S.E. BETWEEN SILVER AVENUE S.E. AND COAL AVENUE S.E. VACATED BY 09DRB-70050. PUBLIC EASEMENTS RETAINED (ABCWUA PUBLIC SANITARY SEWER AND PUBLIC WATER, PUBLIC SERVICE COMPANY OF NEW MEXICO, NEW MEXICO GAS COMPANY, QWEST TELECOMMUNICATIONS, AND COMCAST CABLE VISION OF NEW MEXICO, INC.). SURFACE MAINTENANCE OF THE RETAINED EASEMENTS IS THE RESPONSIBILITY OF THE OWNER OF TRACT A-1-A, HIGHLAND HIGH SCHOOL.
- 5' UTILITY EASEMENT GRANTED BY PLAT A8-102 (OFFSITE)

**RECORD DRAWING**

**WESTWIND LANDSCAPE CONSTRUCTION INC.**  
2739 VASSAR PLACE, NE  
ALBUQUERQUE, NM 87107  
PHONE: 505-881-8925  
FAX: 505-883-7052

DESIGNED BY	W.L.C.I.	DATE	BY	REVISIONS	JOB NO.
DRAWN BY	W.L.C.I.	9/11	J.D.S.	ADD THIS SHEET	2010.180.5
APPROVED BY	W.L.C.I.	1/12	B.E.E.	RECORD DRAWING	DATE 09-2011
					SHEET 8 OF 8

File Path: P:\WA\2010\1805\1805-R-2\Plot Date: 01-18-2012  
File Name: 101805\_Sht\_82.DWG Plot Time: 08:15 am

**HIGH MESA Consulting Group**  
6010-B MIDWAY PARK BLVD. NE • ALBUQUERQUE, NEW MEXICO 87109  
PHONE: 505.345.4250 • FAX: 505.345.4254 • www.highmesacg.com

**LANDSCAPE PLAN**  
**COAL AVENUE PEDESTRIAN MALL**  
**HIGHLAND HIGH SCHOOL**