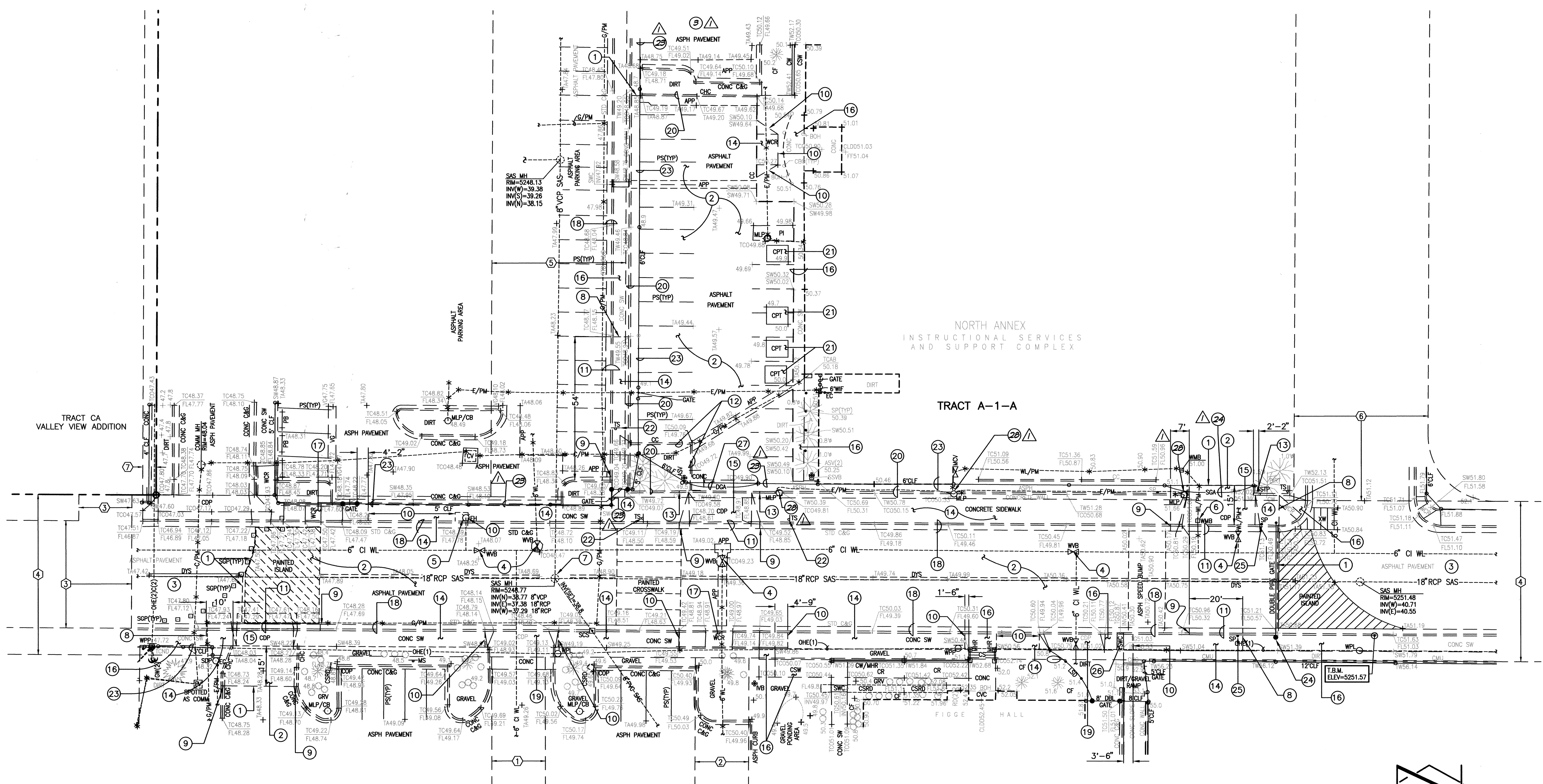


EXISTING LEGEND

- APP ASPHALT PAVING PATCH
- ASPH ASPHALT
- ASV ANTI-SIPHON VALVE
- BOH BUILDING OVERHANG
- C&G CURB AND GUTTER
- C/PM COMMUNICATION LINE BY PAINT MARK
- CBC CONCRETE BUILDING COLUMN
- CC CONCRETE CURB
- CDP CONCRETE DRIVE PAD
- CF LANDSCAPE CRUSHER FINES
- CHC CONCRETE HEADER CURB
- CI CAST IRON PIPE
- CLDD CENTERLINE DOUBLE DOOR
- CLF CHAIN LINK FENCE
- CMU CONCRETE MASONRY UNIT WALL
- COMM COMMUNICATION
- CONC CONCRETE
- COP CONCRETE CURB OPENING
- CPT CONCRETE PICNIC TABLE
- CR CONCRETE RAMP
- CS CONCRETE STEPS
- CSR CONCRETE AND STONE ROUNDOWN
- CSW CONCRETE SIDEWALK
- CV CONCRETE VALUET
- CVC COVERED CONCRETE
- CW CONCRETE WALL
- CW/MHR CONCRETE WALL WITH METAL HAND RAIL ON TOP
- DBL DOUBLE GATE
- DGA PAINTED DOUBLE YELLOW STRIPE
- DYS ELECTRIC LINE BY PAINT MARK
- E/PM ELECTRIC CONDUIT
- EV ELECTRIC VALVE
- FF FINISHED FLOOR ELEVATION
- FH FIRE HYDRANT
- FL FLOWLINE
- G/PM GAS LINE BY PAINT MARK
- GRV GRAVEL
- GW GUY WIRE
- INV INVERT ELEVATION
- IVB IRRIGATION VALVE BOX
- LSD LANDSCAPE DIVIDER
- LST LANDSCAPE STRIPE
- MCV METER CAN WITH VALVE
- MH MANHOLE
- MHR METAL HAND RAIL
- MLP METAL LIGHT POLE WITH 2" CONCRETE BASE
- MLP/CB METAL SIGN
- MS OVERHEAD ELECTRIC (# OF LINES)
- OHE(1) CONCRETE PARKING BUMPER
- PB PAINTED PARKING STRIPE
- PS POLYVINYL CHLORIDE PIPE
- RCP REINFORCED CONCRETE PIPE
- RD ROOF DRAIN
- SAS SANITARY SEWER
- SCS 5" CURB SCRATCH
- SDP SERVICE DROP POLE
- SGA SLIDE GATE
- SOP STEEL GUARD POST (REMOVABLE)
- SP STEEL POLE (GATE STOP)
- SSVB SMALL SPRINKLER VALVE BOX
- STD STANDARD
- STP 4" PVC STAND PIPE
- SW SIDEWALK
- SWC SIDEWALK CULVERT
- TA TOP OF ASPHALT
- TCB TOP OF CURB
- TCM COMMUNICATION CABINET
- TCO COMMUNICATION CONDUIT
- TCO TOP OF CONCRETE
- TOG TOP OF GRATE
- TS TRAFFIC SIGN
- TW TOP OF WALL
- TYP TYPICAL
- VCP VITRIFIED CLAY PIPE
- VGV CONCRETE VALLEY GUTTER
- WCR CONCRETE WHEELCHAIR RAMP
- WIF WROUGHT IRON FENCE
- WL WATER LINE
- WL/PM WATER LINE BY PAINT MARK
- WMB WATER METER BOX
- WPL WOOD POWER POLE WITH LIGHT
- WPP WOOD POWER POLE
- WVB WATER VALVE BOX
- XW PAINTED CROSSWALK
- * WATER PAINTED UTILITY MARKER
- ☼ CONIFEROUS TREE
- ☼ DECIDUOUS TREE
- SHRUB
- LANDSCAPE BOULDER



B1 DEMOLITION PLAN
SCALE: 1" = 20'

BENCHMARKS

PROJECT BENCHMARK
ACS 2" BRASS DISC SET STAMPED "6-K18A ACS" SET IN SIDEWALK AT THE INTERSECTION OF CENTRAL AVENUE AND JACKSON STREET.
ELEVATION = 5249.99 FEET (NAVD 1988)

T.B.M.
A MAG NAIL SET AT BACK OF CURB, AS SHOWN ON THIS DRAWING.
ELEVATION = 5251.57 FEET (NAVD 1988)

DESIGN SURVEY NOTE:

THIS IS NOT A BOUNDARY SURVEY. DATA IS SHOWN FOR ORIENTATION ONLY. BOUNDARY INFORMATION DEPICTED BY THIS PLAN IS BASED UPON AN UNRECORDED BOUNDARY SURVEY BY HIGH MESA CONSULTING GROUP, NMPS 11184, DATED 03-30-2010. THE TOPOGRAPHIC INFORMATION DEPICTED HEREON IS BASED UPON AN UPDATED TOPOGRAPHIC AND UTILITY SURVEY PREPARED BY HIGH MESA CONSULTING GROUP, NMPS 11184, DATED 05-17-2011. (2010.166.2)

EASEMENT KEYED NOTES

- ① 20' PUBLIC WATERLINE EASEMENT GRANTED BY PLAT 90C-142
- ② 20' ABCWUA PUBLIC WATERLINE EASEMENT GRANTED BY PLAT 2008C-260
- ③ PRIVATE ACCESS EASEMENT GRANTED BY PLAT 2009-96 TO SERVE TRACT CA, VALLEY VIEW ADDITION. MAINTENANCE SHALL BE THE RESPONSIBILITY OF THE OWNER OF TRACT A-1-A, HIGHLAND HIGH SCHOOL. COAL AVENUE S.E. BETWEEN JEFFERSON STREET S.E. AND JACKSON STREET S.E. VACATED BY 09DRB-70050. PUBLIC EASEMENTS RETAINED (CITY OF ALBUQUERQUE PUBLIC DRAINAGE, ABCWUA PUBLIC SANITARY SEWER AND PUBLIC WATER, PUBLIC SERVICE COMPANY OF NEW MEXICO, NEW MEXICO GAS COMPANY, QWEST TELECOMMUNICATIONS, AND COMCAST CABLE VISION OF NEW MEXICO, INC.). SUBSURFACE MAINTENANCE OF THE PUBLIC DRAINAGE EASEMENT IS THE RESPONSIBILITY OF THE CITY OF ALBUQUERQUE. SURFACE MAINTENANCE OF THE RETAINED EASEMENTS IS THE RESPONSIBILITY OF THE OWNER OF TRACT A-1-A, HIGHLAND HIGH SCHOOL.
- ④ COAL AVENUE S.E. BETWEEN JEFFERSON STREET S.E. AND JACKSON STREET S.E. VACATED BY 09DRB-70050. PUBLIC EASEMENTS RETAINED (CITY OF ALBUQUERQUE PUBLIC DRAINAGE, ABCWUA PUBLIC SANITARY SEWER AND PUBLIC WATER, PUBLIC SERVICE COMPANY OF NEW MEXICO, NEW MEXICO GAS COMPANY, QWEST TELECOMMUNICATIONS, AND COMCAST CABLE VISION OF NEW MEXICO, INC.). SUBSURFACE MAINTENANCE OF THE PUBLIC DRAINAGE EASEMENT IS THE RESPONSIBILITY OF THE CITY OF ALBUQUERQUE. SURFACE MAINTENANCE OF THE RETAINED EASEMENTS IS THE RESPONSIBILITY OF THE OWNER OF TRACT A-1-A, HIGHLAND HIGH SCHOOL.
- ⑤ MONROE STREET S.E. BETWEEN SILVER AVENUE S.E. AND COAL AVENUE S.E. VACATED BY 09DRB-70050. PUBLIC EASEMENTS RETAINED (ABCWUA PUBLIC SANITARY SEWER AND PUBLIC WATER, PUBLIC SERVICE COMPANY OF NEW MEXICO, NEW MEXICO GAS COMPANY, QWEST TELECOMMUNICATIONS, AND COMCAST CABLE VISION OF NEW MEXICO, INC.). SURFACE MAINTENANCE OF THE RETAINED EASEMENTS IS THE RESPONSIBILITY OF THE OWNER OF TRACT A-1-A, HIGHLAND HIGH SCHOOL.
- ⑥ QUINCY STREET S.E. BETWEEN SILVER AVENUE S.E. AND COAL AVENUE S.E. VACATED BY 09DRB-70050. PUBLIC EASEMENTS RETAINED (ABCWUA PUBLIC SANITARY SEWER AND PUBLIC WATER, PUBLIC SERVICE COMPANY OF NEW MEXICO, NEW MEXICO GAS COMPANY, QWEST TELECOMMUNICATIONS, AND COMCAST CABLE VISION OF NEW MEXICO, INC.). SURFACE MAINTENANCE OF THE RETAINED EASEMENTS IS THE RESPONSIBILITY OF THE OWNER OF TRACT A-1-A, HIGHLAND HIGH SCHOOL.
- ⑦ 5' UTILITY EASEMENT GRANTED BY PLAT A8-102 (OFFSITE)

DEMOLITION PLAN KEYED NOTES

- ① NEATLY SAWCUT EXISTING ASPHALT PAVING
- ② REMOVE AND DISPOSE OF EXISTING ASPHALT PAVING
- ③ EXISTING ASPHALT PAVING TO REMAIN
- ④ EXISTING WATER VALVE BOX TO BE ADJUSTED TO GRADE
- ⑤ EXISTING FIRE HYDRANT WITH CONCRETE PAD TO REMAIN
- ⑥ EXISTING WATER METER BOX TO BE ADJUSTED TO GRADE
- ⑦ EXISTING SANITARY SEWER MANHOLE TO BE ADJUSTED TO GRADE
- ⑧ NEATLY SAWCUT EXISTING SIDEWALK AND CURB AND GUTTER
- ⑨ NEATLY SAWCUT EXISTING CURB AND GUTTER
- ⑩ NEATLY SAWCUT EXISTING CONCRETE SIDEWALK
- ⑪ REMOVE AND DISPOSE OF EXISTING CURB AND GUTTER
- ⑫ REMOVE AND DISPOSE OF EXISTING CONCRETE HEADER CURB
- ⑬ NEATLY SAWCUT EXISTING HEADER CURB
- ⑭ REMOVE AND DISPOSE OF EXISTING CONCRETE SIDEWALK
- ⑮ REMOVE AND DISPOSE OF EXISTING CONCRETE DRIVEPAD
- ⑯ EXISTING CONCRETE SIDEWALK TO REMAIN
- ⑰ EXISTING WHEELCHAIR RAMP TO REMAIN
- ⑱ EXISTING CURB AND GUTTER TO REMAIN
- ⑲ EXISTING DRIVEPAD TO REMAIN
- ⑳ EXISTING HEADER CURB TO REMAIN
- ㉑ REMOVE AND SALVAGE EXISTING PICNIC TABLE
- ㉒ REMOVE AND RETURN EXISTING TRAFFIC SIGN
- ㉓ EXISTING CHAIN LINK FENCE TO REMAIN
- ㉔ EXISTING GATE TO REMAIN
- ㉕ EXISTING GATE STOP TO REMAIN
- ㉖ EXISTING SIDEWALK CULVERT TO REMAIN
- ㉗ REMOVE AND RETURN EXISTING GATE
- ㉘ EXISTING LIGHT POLE TO REMAIN

RECORD DRAWING

DESIGNED BY	J.D.S.	DATE	9/11	BY	J.D.S.	REVISIONS	CLARIFY LIGHTING AND FENCE REMOVAL LIMITS	JOB NO.	2010.180.5
DRAWN BY	CLT./E.J.S.	DATE	12/11	BY	B.E.E.	REVISIONS	RECORD DRAWING	DATE	09-2011
APPROVED BY	J.G.M.							SHEET	2 OF 8

File Path: E:\DATA\2010\180.180.5\B-1.dwg Plot Date: 12-21-2011 File Name: 101805-SH-RZ.DWG Plot Time: 3:09 pm

HIGH MESA Consulting Group
6010-B MIDWAY PARK BLVD. NE • ALBUQUERQUE, NEW MEXICO 87109
PHONE: 505.345.4250 • FAX: 505.345.4254 • www.highmesacg.com

DEMOLITION PLAN
COAL AVENUE PEDESTRIAN MALL
HIGHLAND HIGH SCHOOL

08-9-2011
01-22-2012
J. G. MORTENSEN
REGISTERED PROFESSIONAL ENGINEER
8547
09-07-2011