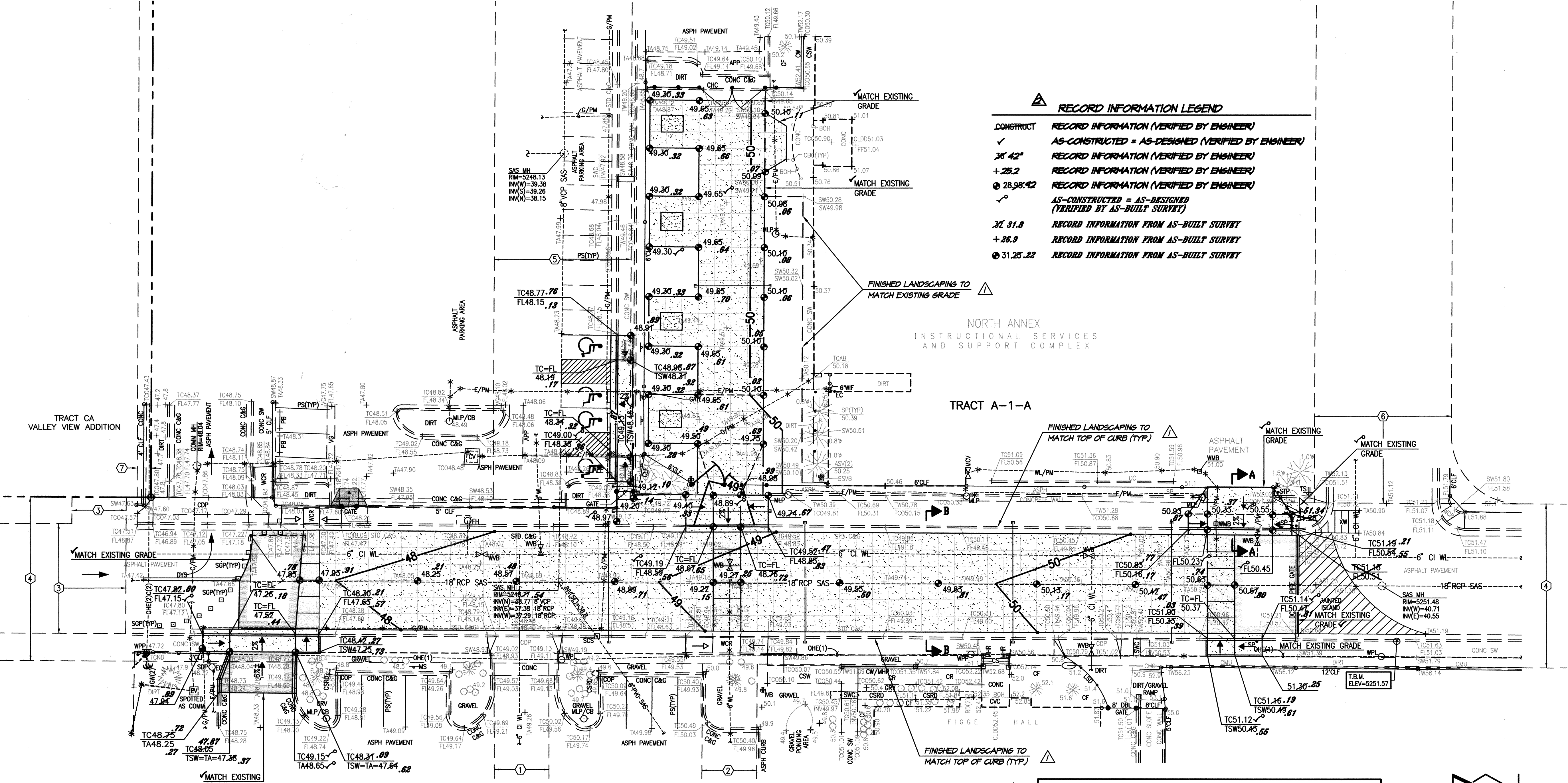


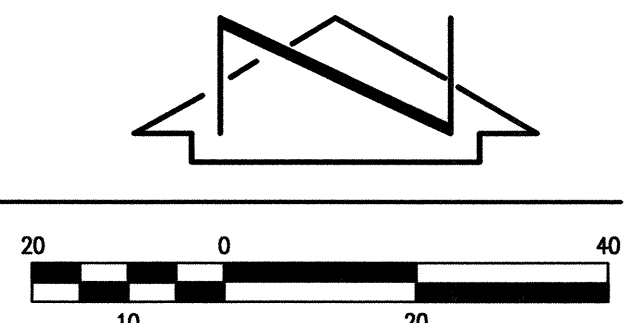
EXISTING LEGEND

APP	ASPHALT PAVING PATCH
ASPH	ASPHALT
ASV	ANTI-SIPHON VALVE
BOH	BUILDING OVERHANG
C&G	CURB AND GUTTER
C/PM	COMMUNICATION LINE BY PAINT MARK
CBC	CONCRETE BUILDING COLUMN
CC	CONCRETE CURB
CDP	CONCRETE DRIVE PAD
CF	LANDSCAPE CRUSHER FINES
CHC	CONCRETE HEADER CURB
CI	CAST IRON PIPE
CLDD	CENTERLINE DOUBLE DOOR
CLF	CHAIN LINK FENCE
CMU	CONCRETE MASONRY UNIT WALL
COMM	COMMUNICATION
CONC	CONCRETE
COP	CONCRETE CURB OPENING
CPT	CONCRETE PICNIC TABLE
CR	CONCRETE RAMP
CSRD	CONCRETE AND STONE RUNDOWN
CSW	CONCRETE SIDEWALK
CV	COMMUNICATION VAULT
CVC	COVERED CONCRETE
CW	CONCRETE WALL
CW/MHR	CONCRETE WALL WITH METAL HAND RAIL ON TOP
DBL	DOUBLE
DGA	DOUBLE GATE
DYS	PAINTED DOUBLE YELLOW STRIPE
E/PM	ELECTRIC LINE BY PAINT MARK
EC	ELECTRIC CONDUIT
EV	ELECTRIC VAULT
FF	FINISHED FLOOR ELEVATION
FH	FIRE HYDRANT
FL	FLOWLINE
G/PM	GAS LINE BY PAINT MARK
GRV	GRAVEL
GW	GUY WIRE
INV	INVERT ELEVATION
IVB	IRRIGATION VALVE BOX
LSO	LANDSCAPE DIVIDER
LST	LANDSCAPE TIMBER
MCV	METER CAN WITH VALVE
MH	MANHOLE
MHR	METAL HAND RAIL
M/LP	METAL LIGHT POLE
M/PCB	METAL LIGHT POLE WITH 2" CONCRETE BASE
MS	METAL SIGN
ONE(1)	OVERHEAD ELECTRIC (# OF LINES)
PS	CONCRETE PARKING BUMPER
PB	PAINTED PARKING STRIPE
PVC	POLYVINYL CHLORIDE PIPE
RCP	REINFORCED CONCRETE PIPE
RD	ROOF DRAIN
SAS	SANITARY SEWER
SCS	"S" CURB SCRATCH
SDP	SERVICE DROP POLE
SGA	SLIDE GATE
SGP	STEEL GUARD POST (REMOVABLE)
SP	STEEL POLE (GATE STOP)
SSVB	SMALL SPRINKLER VALVE BOX
STP	STANDARD
SW	4" PVC STAND PIPE
SWC	SIDEWALK CURBULT
TA	TOP OF ASPHALT
TC	TOP OF CURB
TCAB	COMMUNICATION CABINET
TCND	J.G. COMMUNICATION CONDUIT
TCO	TOP OF CONCRETE
TOG	TOP OF GRATE
TS	TRAFFIC SIGN
TW	TOP OF WALL
TYP	TYPICAL
VCP	VITRIFIED CLAY PIPE
VG	CONCRETE VALLEY GUTTER
WCR	CONCRETE WHEELCHAIR RAMP
WLF	WROUGHT IRON FENCE
WL	WATER LINE
WL/PM	WATER LINE BY PAINT MARK
WMB	WOOD METER BOX
WPL	WOOD POWER POLE WITH LIGHT
WVP	WOOD VALVE BOX
XW	PAINTED CROSSWALK
*	PAINTED UTILITY MARKER
☼	CONFEROUS TREE
☼	DECIDUOUS TREE
○	SHRUB
○	LANDSCAPE BOULDER



B1 GRADING PLAN
SCALE: 1" = 20'

RECORD DRAWING
FOR CERTIFICATION, SEE SHEET 1



BENCHMARKS
PROJECT BENCHMARK
ACS 2" BRASS DISC SET STAMPED "6-K18A ACS" SET IN SIDEWALK AT THE INTERSECTION OF CENTRAL AVENUE AND JACKSON STREET.
ELEVATION = 5249.99 FEET (NAVD 1988)

T.B.M.
A MAG NAIL SET AT BACK OF CURB, AS SHOWN ON THIS DRAWING.
ELEVATION = 5251.57 FEET (NAVD 1988)

DESIGN SURVEY NOTE:
THIS IS NOT A BOUNDARY SURVEY. DATA IS SHOWN FOR ORIENTATION ONLY. BOUNDARY INFORMATION DEPICTED BY THIS PLAN IS BASED UPON AN UNRECORDED BOUNDARY SURVEY BY HIGH MESA CONSULTING GROUP, NMPS 11184, DATED 03-30-2010. THE TOPOGRAPHIC INFORMATION DEPICTED HEREON IS BASED UPON AN UPDATED TOPOGRAPHIC AND UTILITY SURVEY PREPARED BY HIGH MESA CONSULTING GROUP, NMPS 11184, DATED 05-17-2011. (2010.106.2)

- EASEMENT KEYED NOTES**
- ① 20' PUBLIC WATERLINE EASEMENT GRANTED BY PLAT 90C-142
 - ② 20' ABCWUA PUBLIC WATERLINE EASEMENT GRANTED BY PLAT 2008C-260
 - ③ PRIVATE ACCESS EASEMENT GRANTED BY PLAT 2009-96 TO SERVE TRACT CA, VALLEY VIEW ADDITION. MAINTENANCE SHALL BE THE RESPONSIBILITY OF THE OWNER OF TRACT A-1-A, HIGHLAND HIGH SCHOOL. COAL AVENUE S.E. BETWEEN JEFFERSON STREET S.E. AND JACKSON STREET S.E. VACATED BY 09DRB-70050. PUBLIC EASEMENTS RETAINED (CITY OF ALBUQUERQUE PUBLIC DRAINAGE, ABCWUA PUBLIC SANITARY SEWER AND PUBLIC WATER, PUBLIC SERVICE COMPANY OF NEW MEXICO, NEW MEXICO GAS COMPANY, QWEST TELECOMMUNICATIONS, AND COMCAST CABLE VISION OF NEW MEXICO, INC.). SUBSURFACE MAINTENANCE OF THE PUBLIC DRAINAGE EASEMENT IS THE RESPONSIBILITY OF THE CITY OF ALBUQUERQUE. SURFACE MAINTENANCE OF THE RETAINED EASEMENTS IS THE RESPONSIBILITY OF THE OWNER OF TRACT A-1-A, HIGHLAND HIGH SCHOOL.
 - ④ COAL AVENUE S.E. BETWEEN JEFFERSON STREET S.E. AND JACKSON STREET S.E. VACATED BY 09DRB-70050. PUBLIC EASEMENTS RETAINED (CITY OF ALBUQUERQUE PUBLIC DRAINAGE, ABCWUA PUBLIC SANITARY SEWER AND PUBLIC WATER, PUBLIC SERVICE COMPANY OF NEW MEXICO, NEW MEXICO GAS COMPANY, QWEST TELECOMMUNICATIONS, AND COMCAST CABLE VISION OF NEW MEXICO, INC.). SUBSURFACE MAINTENANCE OF THE PUBLIC DRAINAGE EASEMENT IS THE RESPONSIBILITY OF THE CITY OF ALBUQUERQUE. SURFACE MAINTENANCE OF THE RETAINED EASEMENTS IS THE RESPONSIBILITY OF THE OWNER OF TRACT A-1-A, HIGHLAND HIGH SCHOOL.
 - ⑤ MONROE STREET S.E. BETWEEN SILVER AVENUE S.E. AND COAL AVENUE S.E. VACATED BY 09DRB-70050. PUBLIC EASEMENTS RETAINED (ABCWUA PUBLIC SANITARY SEWER AND PUBLIC WATER, PUBLIC SERVICE COMPANY OF NEW MEXICO, NEW MEXICO GAS COMPANY, QWEST TELECOMMUNICATIONS, AND COMCAST CABLE VISION OF NEW MEXICO, INC.). SURFACE MAINTENANCE OF THE RETAINED EASEMENTS IS THE RESPONSIBILITY OF THE OWNER OF TRACT A-1-A, HIGHLAND HIGH SCHOOL.
 - ⑥ QUINCY STREET S.E. BETWEEN SILVER AVENUE S.E. AND COAL AVENUE S.E. VACATED BY 09DRB-70050. PUBLIC EASEMENTS RETAINED (ABCWUA PUBLIC SANITARY SEWER AND PUBLIC WATER, PUBLIC SERVICE COMPANY OF NEW MEXICO, NEW MEXICO GAS COMPANY, QWEST TELECOMMUNICATIONS, AND COMCAST CABLE VISION OF NEW MEXICO, INC.). SURFACE MAINTENANCE OF THE RETAINED EASEMENTS IS THE RESPONSIBILITY OF THE OWNER OF TRACT A-1-A, HIGHLAND HIGH SCHOOL.
 - ⑦ 5' UTILITY EASEMENT GRANTED BY PLAT A8-102 (OFFSITE)

DESIGN LEGEND

	PROPOSED CONCRETE		HIGH POINT
	PROPOSED COLORED CONCRETE	INV	INVERT
	PROPOSED ASPHALT PAVING	TC	TOP OF CURB
	PROPOSED SPOT ELEVATION	TA	TOP OF ASPHALT PAVEMENT
	EXISTING FLOWLINE ELEVATION	TSW	TOP OF SIDEWALK
	PROPOSED CONTOUR		
	EXISTING CONTOUR		
	PROPOSED FLOWLINE		
	PROPOSED DIRECTION OF FLOW		
	EXISTING DIRECTION OF FLOW		
	RIGHT OF WAY LINE		
	PUBLIC EASEMENT LINE		

01-22-2012
09-07-2011
08-21-2011

JEFFREY G. MORTENSEN
REGISTERED PROFESSIONAL ENGINEER
NEW MEXICO
8547

HIGH MESA Consulting Group
6010-B MIDWAY PARK BLVD. NE • ALBUQUERQUE, NEW MEXICO 87109
PHONE: 505.345.4250 • FAX: 505.345.4254 • www.highmesacg.com

GRADING PLAN
COAL AVENUE PEDESTRIAN MALL
HIGHLAND HIGH SCHOOL

DESIGNED BY	DATE	BY	REVISIONS	JOB NO.
J.D.S.	9/11	J.D.S.	ADD LANDSCAPING NOTES	2010.180.5
CLT./E.J.S./J.V.R.	12/11	B.E.E.	RECORD DRAWING AND CERTIFICATION	DATE 09-2011
J.G.M.				SHEET 5 OF 8