

GENERAL NOTES

- A. COORDINATE WORK WITH SITE PLANS, ARCHITECTURAL PLANS, UTILITIES DRAWINGS, MECHANICAL, PLUMBING, ELECTRICAL, DWGS.
- B. SEE COVER SHEET AND SHEET AS-101D FOR GENERAL NOTES AND ENVIRONMENTAL NOTES.
- C. SEE SHEET AS-101-D FOR GENERAL SITE INFORMATION AND EXISTING CONDITIONS/DEMOLITION WORK. UTILITIES ARE SHOWN IN APPROXIMATE LOCATION ONLY. SEE V-101 FOR SURVEY.
- D. CONTRACTOR MUST VERIFY EXISTING CONDITIONS AND EXACT LOCATIONS WITH APPROPRIATE PUBLIC UTILITIES BEFORE COMMENCING WORK.
- E. AT EXTERIOR SITE UTILITIES WORK: SAWCUT TRENCHES, INSTALL WORK, COMPACT TO 90% MIN. AND REPLACE W/ ASPHALT/ CONCRETE, MATCH EXISTING. COORDINATE THIS WORK WITH MECHANICAL, PLUMBING & ELECTRICAL. ALL TRENCHES WILL BE REQUIRED TO HAVE NEW PAVEMENT MATERIAL INSTALLED OVER TRENCH UNLESS OTHERWISE INDICATED.
- F. SEE GEOTECHNICAL INVESTIGATION REPORT AND RECOMMENDATIONS FOR SITE WORK. (IN PROJECT MANUAL.)
- G. SEE CIVIL, MECHANICAL AND ELECTRICAL DRAWINGS FOR ADDITIONAL SITE INFORMATION AND FOR UNDERGROUND IMPROVEMENTS / WORK ITEMS.
- H. STAKING AND BUILDING LAYOUT IS THE RESPONSIBILITY OF THE GENERAL CONTRACTOR.
- I. PATCH ASPHALT AT NEW TRENCHES. SEE MECHANICAL/ELECTRICAL.
- J. COMPLY W/ ALL CITY OF ALBUQUERQUE REQUIREMENTS FOR TRAFFIC CONTROL, STREET CLOSURE, WORKING WITHIN THE CITY RIGHT-OF-WAY, ETC.
- K. AT PARKING SPACES, PAINT OUT OLD STRIPING AS REQUIRED TO ALLOW FOR NEW PARKING CONFIGURATION. RESTRIPE ASPHALT AS INDICATED.
- L. NEW GRADES ARE TO 'MATCH' TRANSITION INTO EXISTING GRADES / EXISTING ASPHALT. AS REQUIRED GRIND EXISTING ASPHALT TO TRANSITION THE NEW CONCRETE IN A SMOOTH AND LEVEL TRANSITION.
- M. REINFORCE ALL EXTERIOR CONCRETE SIDEWALKS / FLAT WORK WITH 6x6 / 10-10 WELDED WIRE MESH, FLAT SHEETS ONLY. INSTALL ON CHAIRS CENTERED IN SLAB. INSTALL OVER 95% MINIMUM COMPACTED GRADE.
- N. ALL NEW CONCRETE TO HAVE MINIMUM COMPRESSIVE STRENGTH OF 4000 PSI, AIR ENTRAINED, AT EXTERIOR LOCATIONS.
- O. AT SITE IMPROVEMENTS AND BELOW NEW PAVING: COMPACT SUBGRADE TO A MINIMUM OF 95% COMPACTION.

KEYED NOTES

- 01100.03 DASHED LINE INDICATES ROOF ABOVE.
- 03200.13 CONCRETE DRIVEPAD PER CITY OF ALBUQUERQUE STANDARD SPECIFICATION. REFER TO CITY STANDARD DETAIL 2425.
- 03200.14 CONCRETE CURB AND GUTTER PER CITY OF ALBUQUERQUE STANDARD SPECIFICATION. REFER TO CITY STANDARD DETAIL 2415A.
- 03200.15 CONCRETE SIDEWALK PER CITY OF ALBUQUERQUE STANDARD SPECIFICATION. REFER TO CITY STANDARD DETAIL 2430.
- 03400.01 6'-0" X 9" X 6 1/2" PRECAST CONCRETE WHEEL STOP. PROVIDE (2) 18" LONG NO.4 REBAR STAKES AT EACH WHEEL STOP. CENTER/ LOCATE WHEEL STOPS WITHIN THE PARKING SPACE AS INDICATED.
- 10100.01 EXISTING MONUMENT SIGN ON POSTS. TO REMAIN. BOTTOM OF SIGN @ 8' - 4" ABOVE EXISTING ASPHALT SURFACE.
- 10100.04 MOTORCYCLE PARKING SIGN. ALUMINUM OR FIBERGLASS PLATE: SIGN FIELD IS WHITE. SIGN LETTERING AND BORDERS ARE GREEN. SEE DETAIL. LOCATE SIGN CENTERED ON PARKING SPACE.
- 10100.05 ADA ACCESSIBLE PARKING SIGN. ALUMINUM OR FIBERGLASS PLATE: SIGN FIELD IS WHITE, SIGN LETTERING AND BORDERS ARE BLUE. SEE DETAIL. LOCATE SIGN CENTERED ON PARKING SPACE.
- 32100.01 EXISTING ASPHALT PAVING, TO REMAIN.
- 32100.03 PROVIDE AND INSTALL PARKING STRIPING, HANDICAP SYMBOL (36" X 36") AND HANDICAP STRIPING. PROVIDE 6" WIDE X 2'-0" O.C. DIAGONAL PAINT STRIPING. SEE INDICATED LAYOUT. PROVIDE THE WORDS "NO PARKING" IN CAPITAL LETTERS, 1'-0" HIGH LETTERS X 2" WIDE STRIPES LOCATED SO AS TO BE CLOSE TO WHERE ADJACENT VEHICLE'S REAR TIRES WOULD BE PARKED. WHITE PARKING LINES AT REGULAR SPACE, AND BLUE COLOR AT HANDICAPPED SPACES AND ACCESS AISLE.
- 32100.04 PROVIDE 6" WIDE PAINT STRIPING, TYPICAL. SEE INDICATED LAYOUT.
- 32100.05 PROVIDE 12" WIDE PAINT STRIPING. SEE INDICATED LAYOUT.
- 32100.07 PROVIDE/ INSTALL ADHESIVE APPLIED DETECTABLE WARNING STRIP WITH TRUNCATED DOMES. 24" DEPTH X 5' WIDTH OF WALKING SURFACE. TRUNCATED DOMES PROVIDED PER ANSI SECTION 705.5.

LEGEND

- OHE EXISTING OVERHEAD ELECTRICAL, TO REMAIN.
- NEW FENCE W/ STEEL POSTS.
- EXISTING CONCRETE SIDEWALK TO REMAIN.
- NEW CONCRETE SIDEWALK.

LEE GAMESKY ARCHITECTS P.C.

2412 MILES ROAD SE
ALBUQUERQUE, NM 87106
505.842.8865 FAX 842.1693
lee@lganm.com

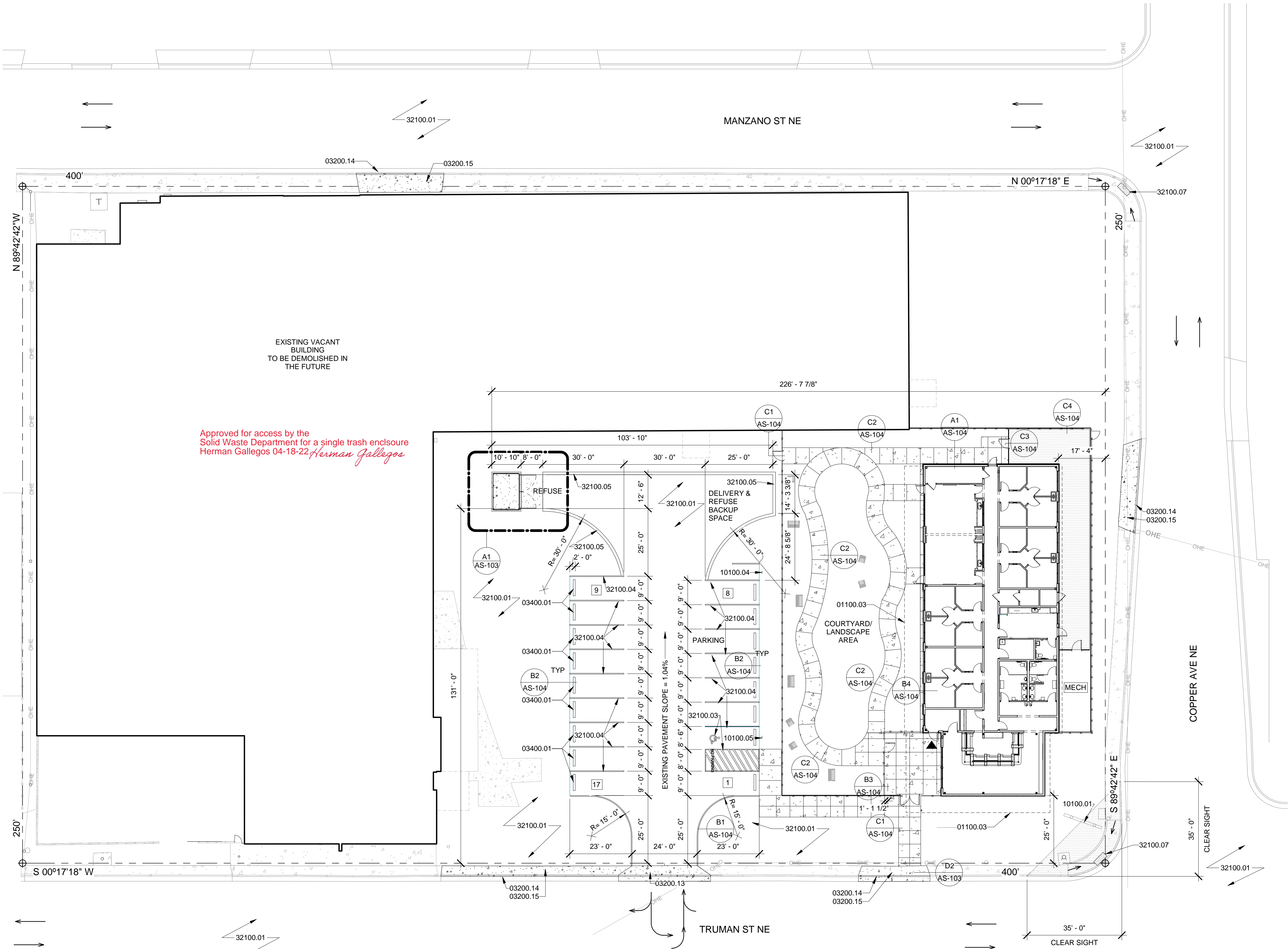
STATE OF NEW MEXICO
LEE D. GAMESKY
No. 193672
REGISTERED ARCHITECT

FNHC BEHAVIORAL HEALTH OUTPATIENT CLINIC
5110 COPPER AVE. NE, ALBUQUERQUE, NEW MEXICO

PROJECT ARCHITECT: LEE GAMESKY, AIA	Project #: 21-01-FNCH
Date: 4.14.2022	

SITE PLAN • REFUSE ENCLOSURE LAYOUT

By: File:	Sheet: 09 Of: AS-101R
--------------	--------------------------



SITE PLAN • REFUSE ENCLOSURE LAYOUT

1" = 20'-0"

