

Product information presented here reflects conditions at time of publication. Consult factory regarding discrepancies or inconsistencies.



**PUMP COMPANY**

Zoeller Family of Water Solutions™

MAIL TO: P.O. BOX 16347 • Louisville, KY 40256-0347  
SHIP TO: 3649 Cane Run Road • Louisville, KY 40211-1961  
(502) 778-2731 • 1 (800) 928-PUMP • FAX (502) 774-3624

visit our web site:  
[www.zoeller.com](http://www.zoeller.com)

## COMPARE THESE FEATURES

- Float-operated, submersible (NEMA 6) 2-pole mechanical switch
- Durable cast construction, ASTM class 25 cast iron, switch case, and pump housing
- Cast iron base on 267, 268
- Engineered plastic base on 266
- Non-clogging vortex impeller design  
Engineered plastic impeller with metal inserts on models 266, 267 & 268 (1 PH) model 267 available with cast iron impeller option (cast iron impeller standard on 3 PH models.)
- Not effected by materials normally found in drainage and sewage sumps
- Stainless steel screws, bolts, handle, guard, and arm and seal assembly
- UL listed 3-wire neoprene cord and plug  
10 ft. cord standard for automatic  
15 ft. cord standard for nonautomatic
- Square ring & gasket - neoprene
- Motor - 266/267/268 Series - ½ HP 60 Hz, 1725 RPM, oil-filled, hermetically sealed, automatic reset thermal overload protected (1 PH only)
- Oil-lubricated bearings
- Carbon and ceramic shaft seal
- Passes 2" spherical solids
- 2" NPT discharge
- Model 268 contains combination 2" NPT female and 3" NPT male discharge
- On point - 12"; Off point - 4" (automatic units)
- Corrosion-resistant powder coated epoxy finish

## ALL MODELS ARE COMPLETELY SUBMERSIBLE HERMETICALLY SEALED

Watertight - dust tight

**Note:** The sizing of effluent systems normally requires variable level float(s) controls and properly sized basins to achieve required pumping cycles or dosing timers with nonautomatic pumps.

\* May be used in those states where codes do not restrict solids size in effluent systems.

\*\* See back page for UL & CSA listings.

## 266 - 267 - 268 Series

(For Pump Prefix Identification see News & Views 0052)

# "WASTE-MATE"

SUBMERSIBLE

## SEWAGE/\*EFFLUENT PUMP

OR DEWATERING PUMP

2" NPT DISCHARGE

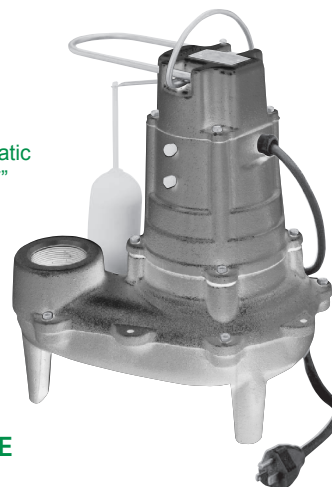


Tested to UL  
Standard UL778



Certified to CSA  
Standard C22.2 No. 108

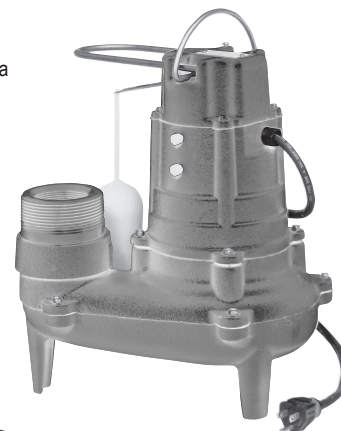
Automatic  
"267"



## FEATURES AVAILABLE

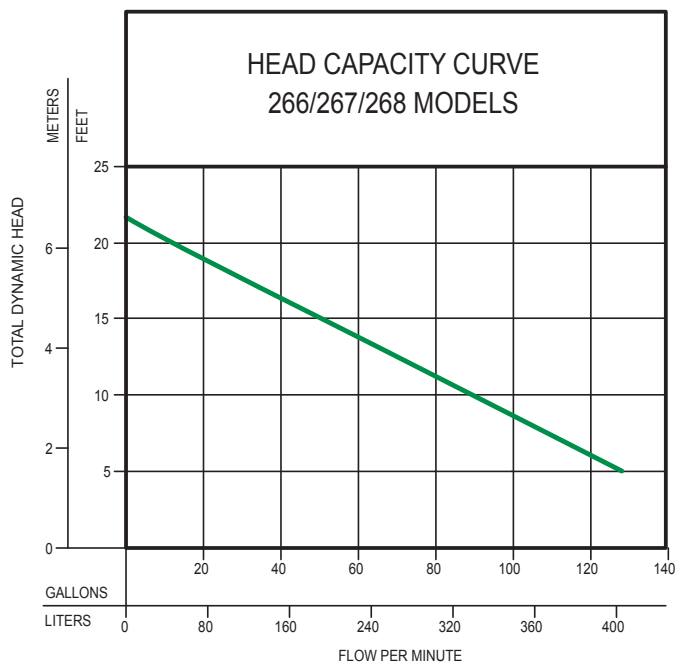
- Automatic
- Nonautomatic (for variable level systems)
- 2" NPT discharge (2" & 3" Model 268)
- ½ HP, 1 Ph, 115V, 200-208V, or 230V
- Passes 2" spherical solids
- BN and BE267 pumps available packaged with a piggyback variable level float switch
- ½ HP, 3 Ph, 200-208V, 230V, or 460V

Automatic  
"268"



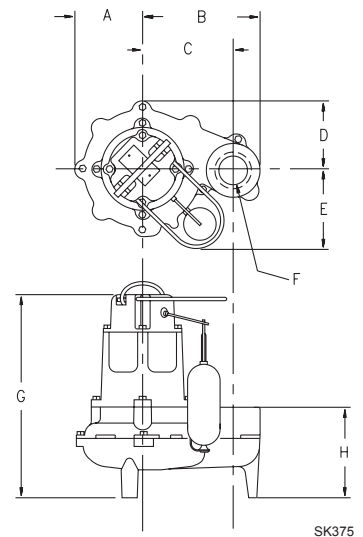
Nonautomatic  
"267"  
for variable  
level systems





### TOTAL DYNAMIC HEAD/FLOW PER MINUTE SEWAGE AND DEWATERING

MODEL		266/267/268	
Feet	Meters	Gal.	Liters
5	1.5	128	484
10	3.0	89	337
15	4.6	50	189
20	6.1	10	38
Shut-off Head:		21.5 ft.(6.6m)	



013225B

SK375

MODEL	A	B	C	D	E	F	G	H
266	4-3/4	8-5/16	6-13/32	4-3/4	6-15/32	2" NPT	14-1/32	6-3/32
267	4-3/4	8-5/16	6-13/32	4-3/4	6-15/32	2" NPT	14-9/32	6-11/32
268	4-3/4	8-13/32	6-13/32	4-3/4	6-15/32	2 7/32" NPT	14-1/32	8-13/32

013225A

## CONSULT FACTORY FOR SPECIAL APPLICATIONS

266 MODELS				Control Selection		Listings	
Model	Volts-Ph	Mode	Amps	Simplex	Duplex	CSA	UL
M266	115	1	Auto	10.4	1	Y	Y
** BN266	115	1	Auto	10.4	**	Y	Y
N266	115	1	Non	10.4	2 or 3	Y	Y
D266	230	1	Auto	5.5	1	Y	Y
E266	230	1	Non	5.5	2 or 3	Y	Y
** BE266	230	1	Auto	5.5	**	Y	Y
* H266	200-208	1	Auto	6.2	1	Y	N
* I266	200-208	1	Non	6.2	3	Y	N
* J266	200-208	3	Non	2.6	3	Y	Y
* F266	230	3	Non	2.6	3	Y	Y
* G266	460	3	Non	1.5	3	Y	N

- Minimum recommended basin size (Small load applications)  
Simplex - 18" x 30"  
Duplex - 30" x 36"
- High water alarms available

#### Standard All Models -

- 266 - Weight 41 lbs. ½ HP
- 267 - Weight 47.5 lbs. ½ HP
- 268 - Weight 51 lbs. ½ HP

**Caution:** Maximum temperature of sewage or dewatering must be limited to 130°F (54°C). For over 130°F (54°C) special quotation required.

- For "M" and "D" models, the approximate gallons pumped out per cycle are:

Tank Diameter	Gallons Pumped
18" Simplex	8 Gallons
24" Simplex	15 Gallons
30" Duplex	22 Gallons
36" Duplex	33 Gallons
48" Duplex	60 Gallons

267 MODELS				Control Selection		Listings	
Model	Volts-Ph	Mode	Amps	Simplex	Duplex	CSA	UL
M267	115	1	Auto	10.4	1	Y	Y
** BN267	115	1	Auto	10.4	**	Y	Y
N267	115	1	Non	10.4	2 or 3	Y	Y
D267	230	1	Auto	5.5	1	Y	Y
E267	230	1	Non	5.5	2 or 3	Y	Y
** BE267	230	1	Auto	5.5	**	Y	Y
* H267	200-208	1	Auto	6.2	1	Y	N
* I267	200-208	1	Non	6.2	3	Y	N
* J267	200-208	3	Non	2.6	3	Y	Y
* F267	230	3	Non	2.6	3	Y	Y
* G267	460	3	Non	1.5	3	Y	N

268 MODELS				Control Selection		Listings	
Model	Volts-Ph	Mode	Amps	Simplex	Duplex	CSA	UL
M268	115	1	Auto	10.4	1	Y	Y
** BN268	115	1	Auto	10.4	**	Y	Y
N268	115	1	Non	10.4	2 or 3	Y	Y
D268	230	1	Auto	5.5	1	Y	Y
E268	230	1	Non	5.5	2 or 3	Y	Y
** BE268	230	1	Auto	5.5	**	Y	Y
* H268	200-208	1	Auto	6.2	1	Y	N
* I268	200-208	1	Non	6.2	3	Y	N
* J268	200-208	3	Non	2.6	3	Y	Y
* F268	230	3	Non	2.6	3	Y	Y
* G268	460	3	Non	1.5	3	Y	N

\*No molded plug

\*\*Single piggyback switch included

For information on additional Zoeller products refer to catalog on Simplex Panels, FM1596; Piggyback Variable Level Switches, FM0477; Electrical Alternator, FM0486; Mechanical Alternator, FM0495; Sump/ Sewage Basins, FM0487; Single Phase Alarm Systems, FM0732; Watertight Junction Boxes, FM1597; and Disconnect & Rail Systems, FM0787.

#### CAUTION

All installation of controls, protection devices and wiring should be done by a qualified licensed electrician. All electrical and safety codes should be followed including the most recent National Electrical Code (NEC) and the Occupational Safety and Health Act (OSHA).

## RESERVE POWERED DESIGN

For unusual conditions a reserve safety factor is engineered into the design of every Zoeller pump.

© Copyright 2013 Zoeller Co. All rights reserved.