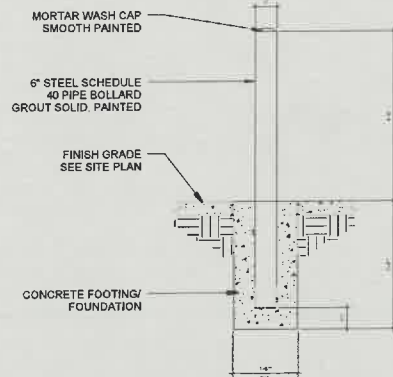


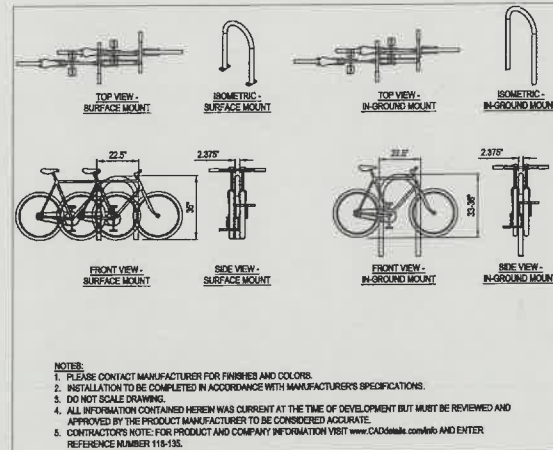
ALL WHEELCHAIR RAMPS LOCATED
WITHIN THE PUBLIC RIGHT OF WAY
MUST HAVE TRUNCATED DOMES.



ADA STANDARDS
A1.1 1/4" = 1'-0"



BOLLARD DETAIL
A1.1 1/2" = 1'-0"

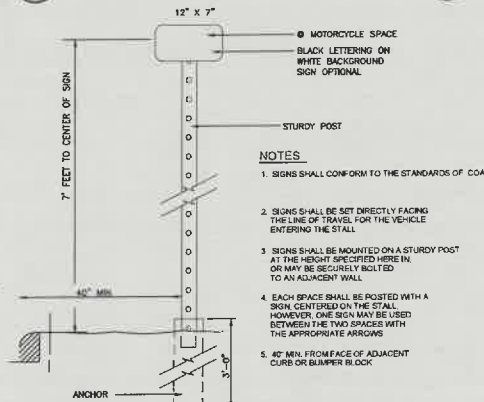


BIKE RACK DETAIL
A1.1 NTS

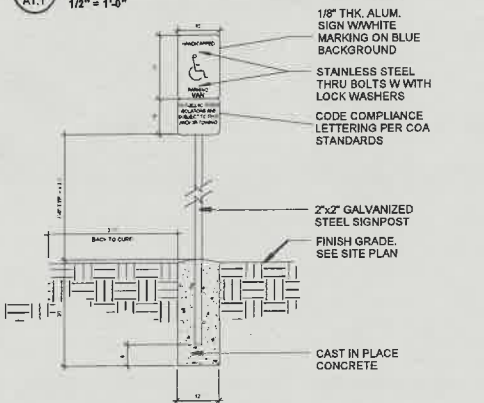
TRAFFIC CIRCULATION LAYOUT APPROVED



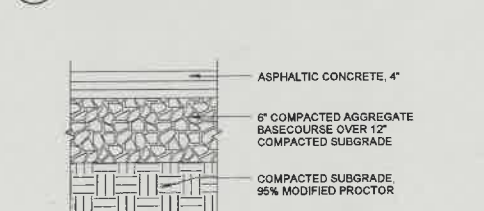
SIDWALK DETAIL
A1.1 3/4" = 1'-0"



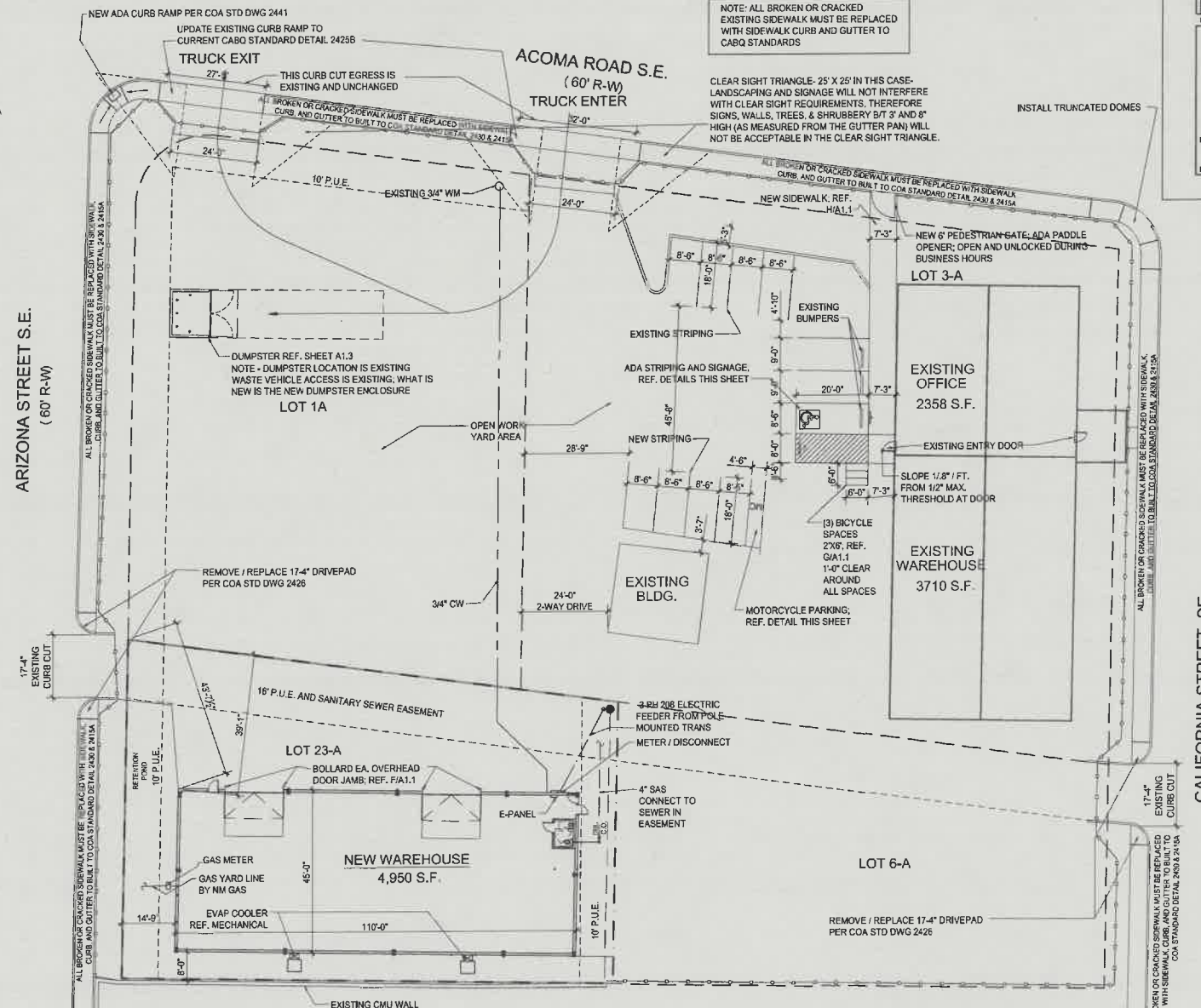
MOTORCYCLE SIGN
A1.1 1/2" = 1'-0"



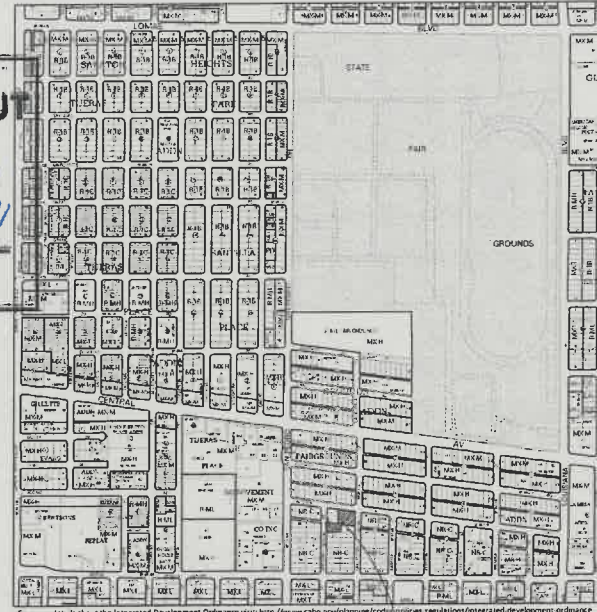
ADA SIGNAGE
A1.1 1/2" = 1'-0"



ASPHALT PAVING
A1.1 1 1/2" = 1'-0"



SITE PLAN
A1.1 1" = 20'-0"



PROJECT LOCATION

LEGAL DESCRIPTION

LOT 23A
FAIRGROUNDS ADDN
ALBUQUERQUE, NEW MEXICO
BERNALILLO COUNTY

SITE DATA

ZONING: NR-C
ZONE ATLAS: K-18
SITE SIZE: 11,310 SQ. FT. (26 AC.)
BUILDING SIZE / % OF SITE: 4,950 SQ. FT. / 43.8%
UPC: 101805731104840216

PARKING CALCULATIONS

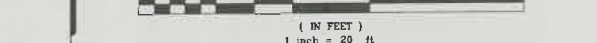
OFFICE
AREA: 2,358 S.F.
PARKING CALCULATIONS:
1 SPACE / 2,358 / 1000 X 3.5 9 SPACES

WAREHOUSING
EXISTING AREA: 3,710 S.F.
NEW AREA: 4,950 S.F.
TOTAL AREA: 8,660 S.F.
PARKING CALCULATIONS:
NO PARKING REQUIRED PER 14-16-5, TABLE 5-5-1

TOTAL STANDARD PARKING PROVIDED = 10 SPACES
TOTAL H.C. PARKING REQUIRED = 1 SPACE
TOTAL H.C. PARKING PROVIDED = 1 SPACE

TOTAL MOTORCYCLE SPACES REQUIRED = 1 SPACE
TOTAL MOTORCYCLE SPACES PROVIDED = 1 SPACE

TOTAL PARKING PROVIDED = 11 SPACES
TOTAL PARKING REQUIRED = 9 SPACES



Joseph F. Simmons, Jr., ala
nm lic 002890
p.o. box 67408
albuq. n.m. 87193-7408
ph 505.480.4796
jfs@simmonsarchitecture.com



U.S. ELECTRICAL CORP.
314 ARIZONA ST. SE
ALBUQUERQUE, NM 87108
BERNALILLO COUNTY

JOB NUMBER
USE-001
DATE
6.9.21
REVISIONS
9.20.21

DESIGNED & DRAWN BY
JFS

**A1.1
TCL**

K18-D092A

CITY OF ALBUQUERQUE

Planning Department
Brennon Williams, Director



Mayor Timothy M. Keller

September 29, 2021

Joseph F. Simons, RA
Simons Architecture
PO BOX 67408
Albuquerque, NM 87107

Re: US Electrical Corporation
314 Arizona St SE
Traffic Circulation Layout
Architect's Stamp 09-20-2021 (K18-D092A)

Dear Mr. Simons,

The TCL submittal received 09-28-2021 is approved for Building Permit with. A copy of the stamped and signed plan will be needed for each of the building permit plans. Please keep the original to be used for certification of the site for final C.O. for Transportation.

When the site construction is completed and an inspection for Certificate of Occupancy (C.O.) is requested, use the original City stamped approved TCL for certification. Redline any minor changes and adjustments that were made in the field. A NM registered architect or engineer must stamp, sign, and date the certification TCL along with indicating that the development was built in "substantial compliance" with the TCL. Submit this certification, the TCL, and a completed Drainage and Transportation Information Sheet to front counter personnel for log in and evaluation by Transportation.

Once verification of certification is completed and approved, notification will be made to Building Safety to issue Final C.O. To confirm that a final C.O. has been issued, call Building Safety at 924-3690.

Sincerely,

Nilo Salgado-Fernandez, P.E.
Senior Traffic Engineer, Planning Dept.
Development Review Services

C: CO Clerk, File