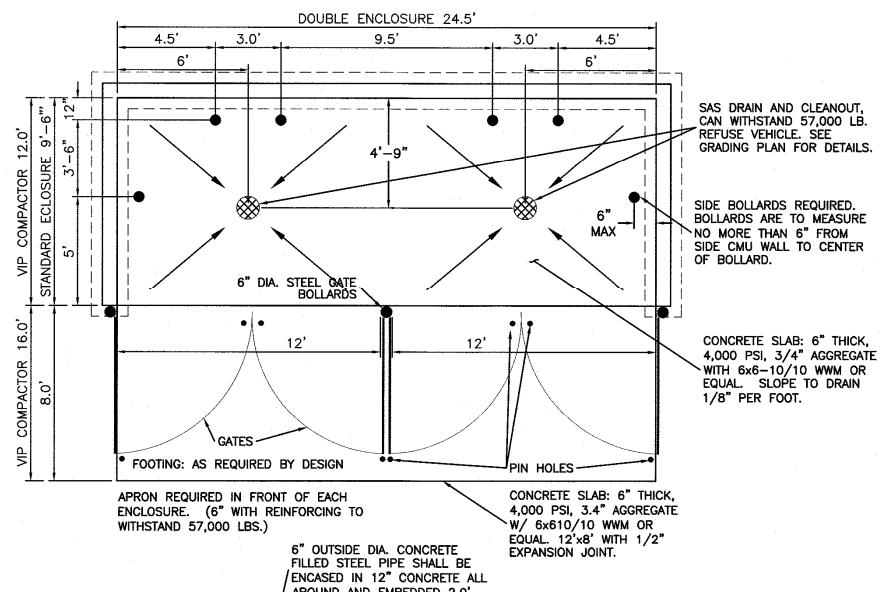
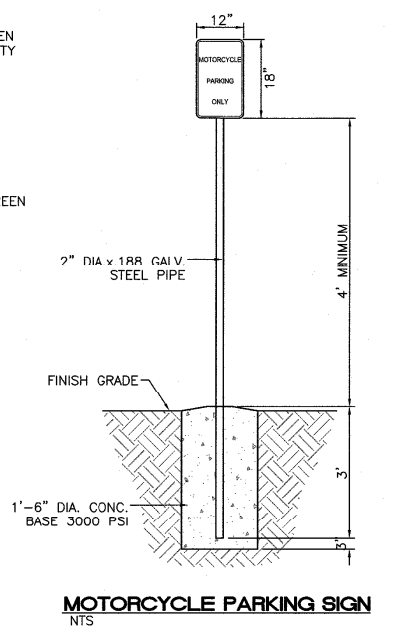
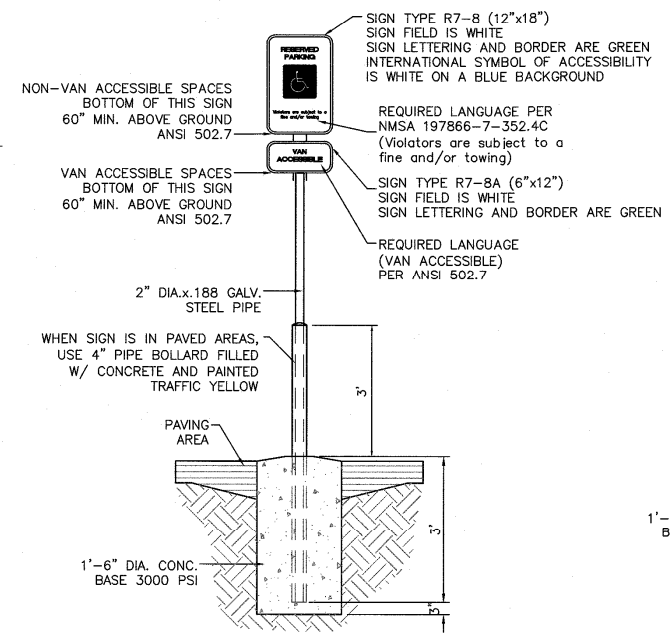
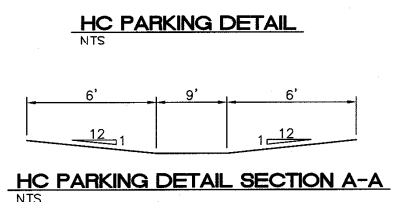
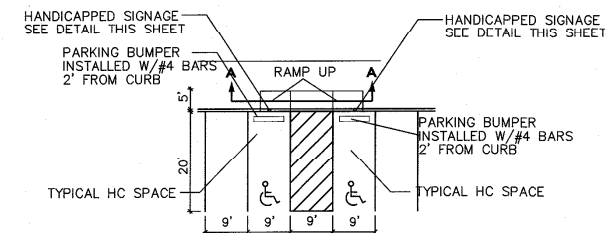
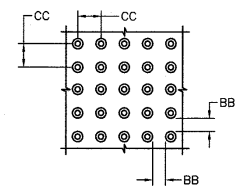
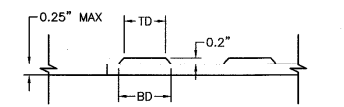
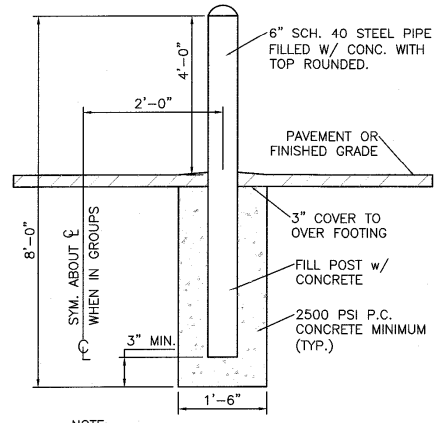
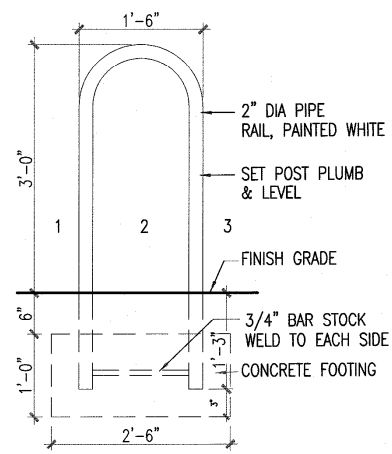
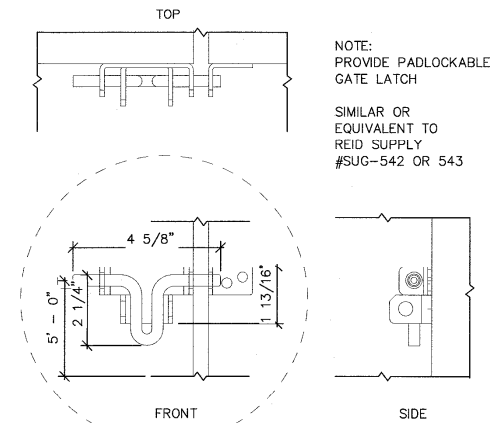
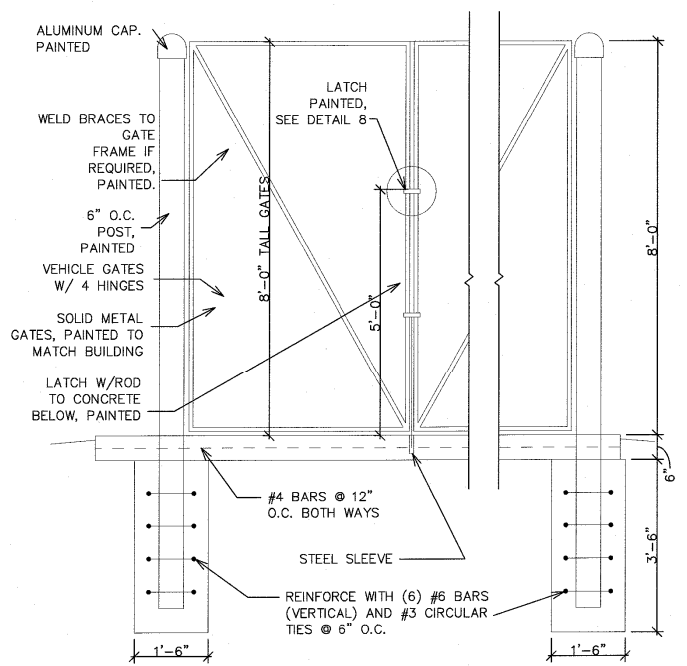


- NOTES:**
1. THE SURFACE OF RAMP AND SIDES SHALL HAVE A TRANSVERSE BROOMED SURFACE TEXTURE ROUGHER THAN THE SURROUNDING SIDEWALK.
 2. CONSTRUCT PER A.D.A. STANDARDS.



- NOTE:**
1. THESE ARE THE MINIMUM REQUIREMENTS FOR TRASH ENCLOSURES. DESIGNS MAY VARY TO FIT THE SELECTED ENCLOSURE.
 2. SOLID WASTE IS TO PROVIDE ALL INSPECTIONS ON THE TRASH ENCLOSURE SUCH AS PRE-POUR FOR SLAB AND APRON, BOND BEAM, BOLLARD, AND FINAL INSPECTION WILL BE CONTINGENT FOR SOLID WASTE SIGN OFF FOR FINAL CO.



TRAFFIC CIRCULATION LAYOUT APPROVED

September 29, 2020

Jeanne Wolfenbarger

CD SET

	MAVERIK STORE #NM-98th ST AND BLUEWATER RD	DRAWN BY pm
	CONSTRUCTION DETAILS	DATE 4-10-2020
	TERRA WEST, LLC 5571 MIDWAY PARK PL NE ALBUQUERQUE, NEW MEXICO 87109 (505) 858-3100 www.terrawestllc.com	DRAWING 2018086-SP
		SP-2