



- 1 COVER SHEET
- 2 BEST MANAGEMENT PRACTICES
- 3 BEST MANAGEMENT PRACTICES
- 4 TEMPORARY SEDIMENT & EROSION CONTROL PLAN (TESCP)
- 5 FINAL STABILIZATION PLAN



No	Revision Item	Date



Design | Comply | Restore

TINY HOME VILLAGE & AIC
—ALBUQUERQUE, BERNALILLO COUNTY, NM

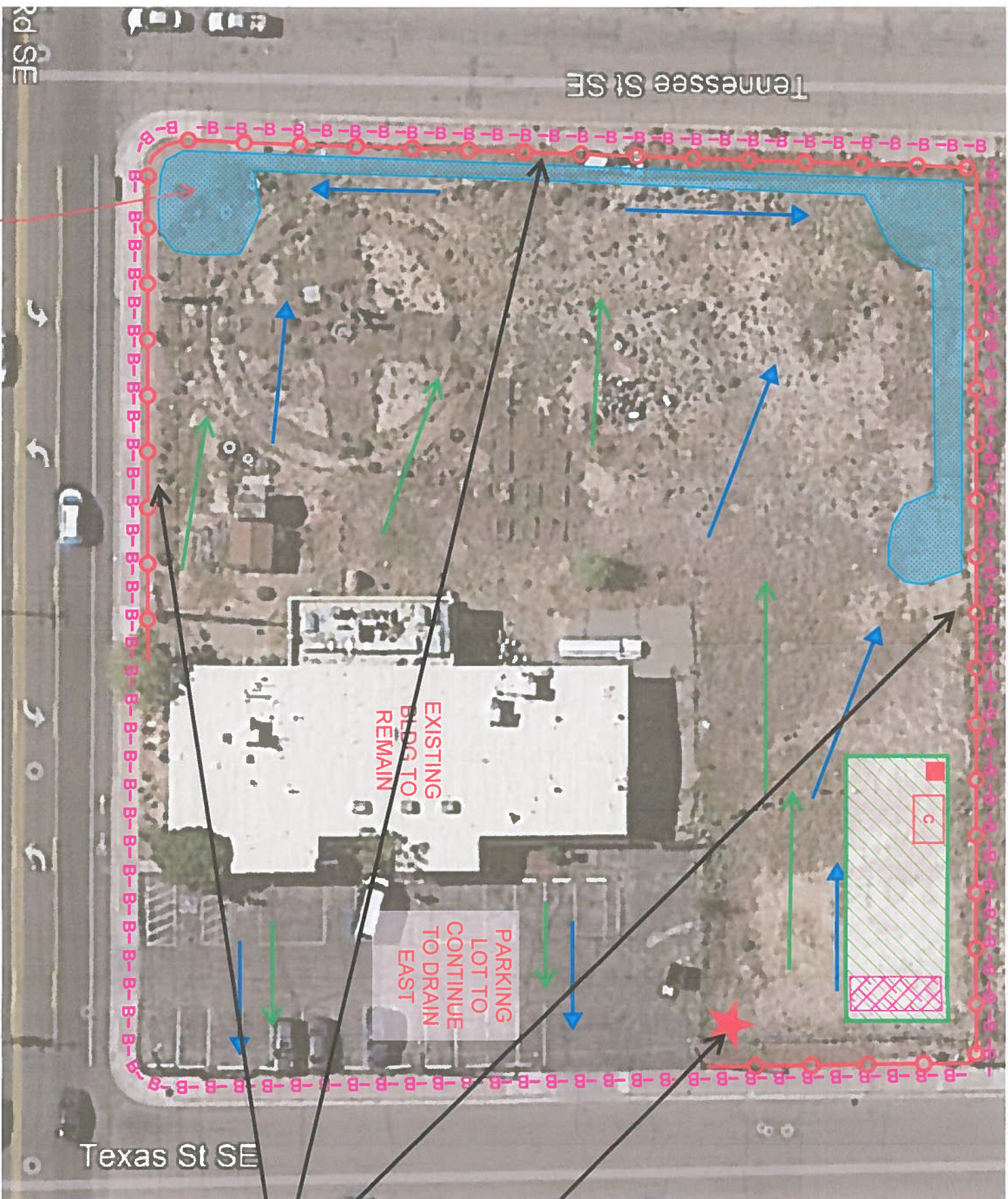
COVER SHEET

S. FETTER

1

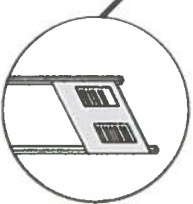
JANUARY 7, 2020





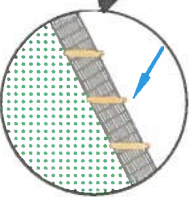
NTS:
SEE GRADING AND DRAINAGE PLAN
FOR STORMWATER RETENTION
POND DIMENSIONS AND CAPACITY.

1. SPOIL PILE PROTECTION MEASURES ARE APPLIED AS NEEDED AND ONLY IF A SPOIL PILE EXISTS.
2. PARKING AND STAGING AREAS ARE LOCATED OFF SITE IF NOT INDICATED ON THIS DRAWING SET. BMP'S WILL BE PLACED IF AREAS ARE DISTURBED.
3. ITEMS SHOWN IN THE LEGEND ARE INCLUDED SO THAT ALTERNATIVE BMP'S MAY BE INCORPORATED INTO THE PROJECT AFTER THE INITIAL SET UP. SOME BMP'S SHOWN ARE AVAILABLE BUT NOT NECESSARILY UTILIZED AT THE ONSET OF CONSTRUCTION.
4. NATURAL BUFFER WILL BE USED AS THE INITIAL BMP WHEN APPROPRIATE.
5. WATTLES AND/OR SILT FENCE ARE ONLY REQUIRED IF THERE IS NO 50 FOOT SECTION OF UNDISTURBED VEGETATION.
6. RECEIVING WATER = EMBUDO CHANNEL
7. GPS COORDINATES = 35.073385, -106.556709
8. DISTURBED AREA = 1.75
9. ENDANGERED SPECIES = RIO GRANDE SILVERY MINNOW & YELLOW BILLED CUCKOO, 5.7 MILES WEST
10. NPDES ID = NMR1002OK



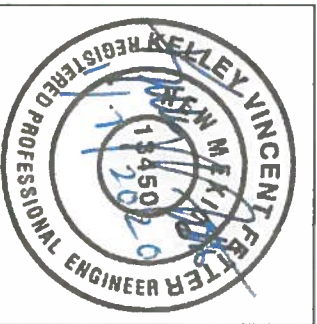
NPDES PERMITTING

IMPLEMENTATION	BMP INSTALL	BMP REMOVE
FINAL STABILIZATION		



SILT FENCE

IMPLEMENTATION	BMP INSTALL	BMP REMOVE
FINAL STABILIZATION		



LEGEND

- POST - CONSTRUCTION FLOW
- PRE - CONSTRUCTION FLOW
- SILT FENCE
- WATTLE OR SOCK
- SPOILS PILE PROTECTION
- EARTHEN BERM
- INLET PROTECTION
- NATURAL BUFFER
- PARKING AND STAGING AREA
- CONCRETE WASHOUT
- STABILIZED CONSTRUCTION ENTRANCE
- VEGETATIVE STABILIZATION
- ENDANGERED/THREATENED SPECIES
- CHEMICAL STORAGE
- TEMP TOILET
- LOCATION FOR PUBLIC NOTIFICATION OF NPDES
- PROJECT BOUNDARY
- DISTURBED AREA
- PROJECT AND DISTURBED BOUNDARY
- CHECK DAM
- PARKING AND STAGING AREA, CHEMICAL STORAGE AND CONCRETE WASHOUT IN APPROXIMATE LOCATION. THESE AREAS ARE TO REMAIN TOGETHER IF MOVED. AREAS CAN BE MOVED AFTER START OF CONSTRUCTION.

No	Revision	Item	Date



Design | Comply | Restore

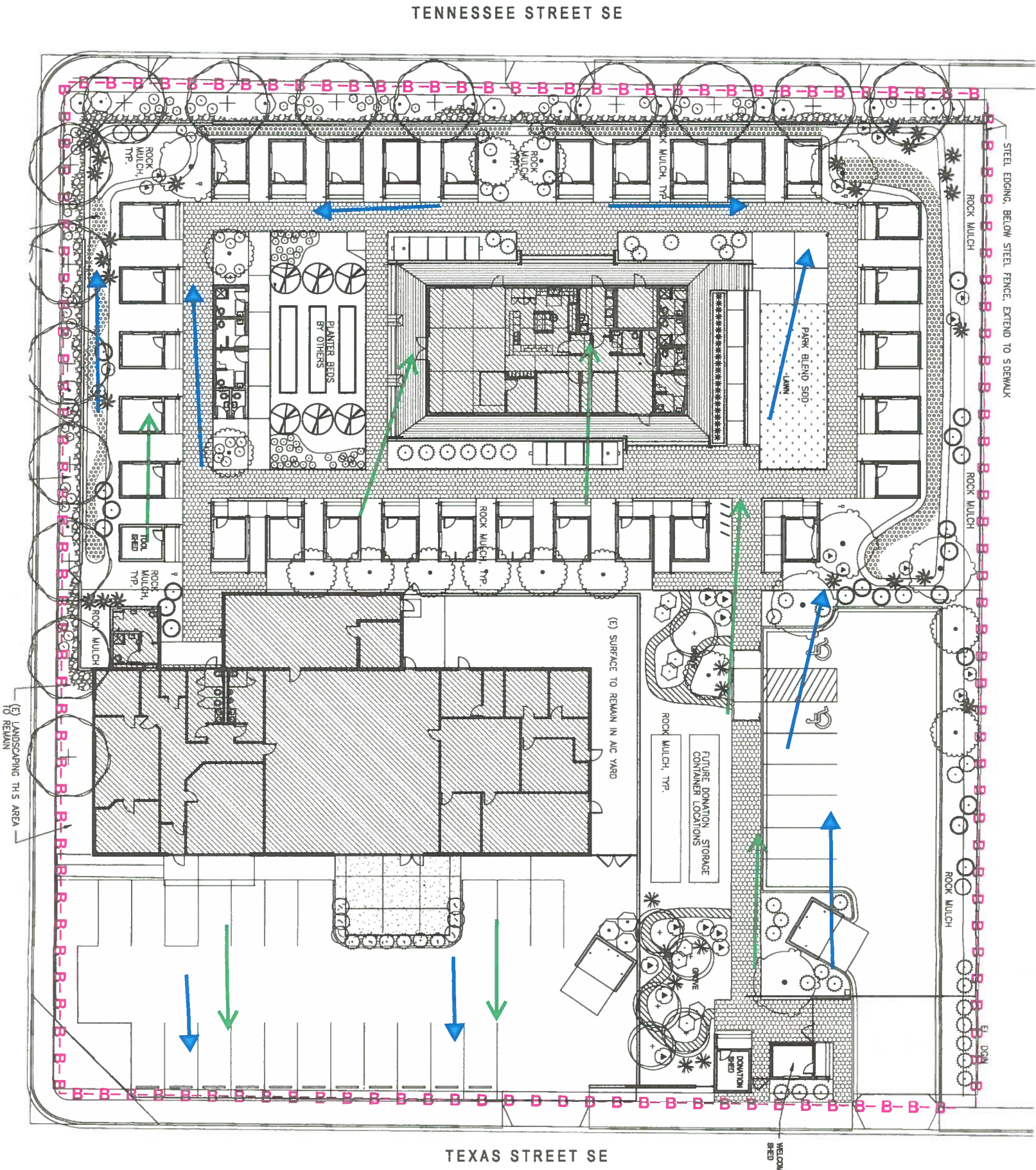
TINY HOME VILLAGE & AIC
ALBUQUERQUE, BERNALILLO COUNTY, NM

TEMPORARY SEDIMENT & EROSION CONTROL PLAN

S. FETTER

JANUARY 7, 2020

4



- 1. SPOIL PILE PROTECTION MEASURES ARE APPLIED AS NEEDED AND ONLY IF A SPOIL PILE EXISTS.
- 2. PARKING AND STAGING AREAS ARE LOCATED OFF SITE IF NOT INDICATED ON THIS DRAWING SET. BMP'S WILL BE PLACED IF AREAS ARE DISTURBED.
- 3. ITEMS SHOWN IN THE LEGEND ARE INCLUDED SO THAT ALTERNATIVE BMP'S MAY BE INCORPORATED INTO THE PROJECT AFTER THE INITIAL SET UP. SOME BMP'S SHOWN ARE AVAILABLE BUT NOT NECESSARILY UTILIZED AT THE ONSET OF CONSTRUCTION.
- 4. NATURAL BUFFER WILL BE USED AS THE INITIAL BMP WHEN APPROPRIATE.
- 5. WATTLES AND/OR SILT FENCE ARE ONLY REQUIRED IF THERE IS NO 50 FOOT SECTION OF UNDISTURBED VEGETATION.
- 6. RECEIVING WATER = EMBUDO CHANNEL
- 7. GPS COORDINATES = 35.073365, -106.556709
- 8. DISTURBED AREA = 1.75
- 9. ENDANGERED SPECIES = RIO GRANDE SILVERY MINNOW & YELLOW BILLED CUCKOO; 5.7 MILES WEST
- 10. NPDES ID = NMR10020K

HATCH LEGEND

BASE COURSE, 3" OVER COMPACTED SUBGRADE, USE 1" MILD STEEL FOR EDGING.

IRRIGATED PARK BLEND

SEEDING TURF

ROCK MULCH THROUGHOUT U.N.O., 3" AMARETTO BROWN FROM NM TRAVERTINE, INC. OVER WEED BARRIER FABRIC

CRUSHER FINE (GRAY) PATH WITHIN 1" ROCK MULCH BORDER (OLD TOWN BROWN)

4"-8" CRUSHED RIP RAP AMARETTO BROWN FROM NM TRAVERTINE, INC.

8"+ CRUSHED RIP RAP AMARETTO BROWN FROM NM TRAVERTINE, INC.

LEGEND

POST - CONSTRUCTION FLOW

PRE - CONSTRUCTION FLOW

ITEMS	NAME	SIZE/DEPTH
	"SHADEMASTER" HONEY LOCUST	
	DESERT WILLOW	
	CHINESE PISTACHE	2" CAL BAR
	FRUIT TREE	MAX TO BE DETERMINED
	NEW MEXICO OLIVE	24" BOX

SHRUBS		
	YUCCA BACCATA	
	TURPENTINE BUSH	

BLACK STALE MIX		
	FRAGRANT SUMAC	
	CHAMAEDA	
	SOTOL	
	PRICKLY PEAR	

SUPERSCALE MIX		
	YUCCA GLAUCA	
	TL TORO* MULLENBERG GRASS	1 GAL
	PRICKLY PEAR	

GRASSES		
	"TALLONE ARROW" GRASS	PLANT ON GRID 12" O.C.
	TL TORO* MULLENBERG GRASS	
	MULDENBERG GRASS	

PERENNIAL MIX (GENERALLY GRASS)		
	MIX OF HERBS/EDIBLE TO BE SELECTED	



Design | Comply | Restore



TINY HOME VILLAGE & AIC
ALBUQUERQUE, BERNALILLO COUNTY, NM

FINAL STABILIZATION

S. FETTER

JANUARY 7, 2020