

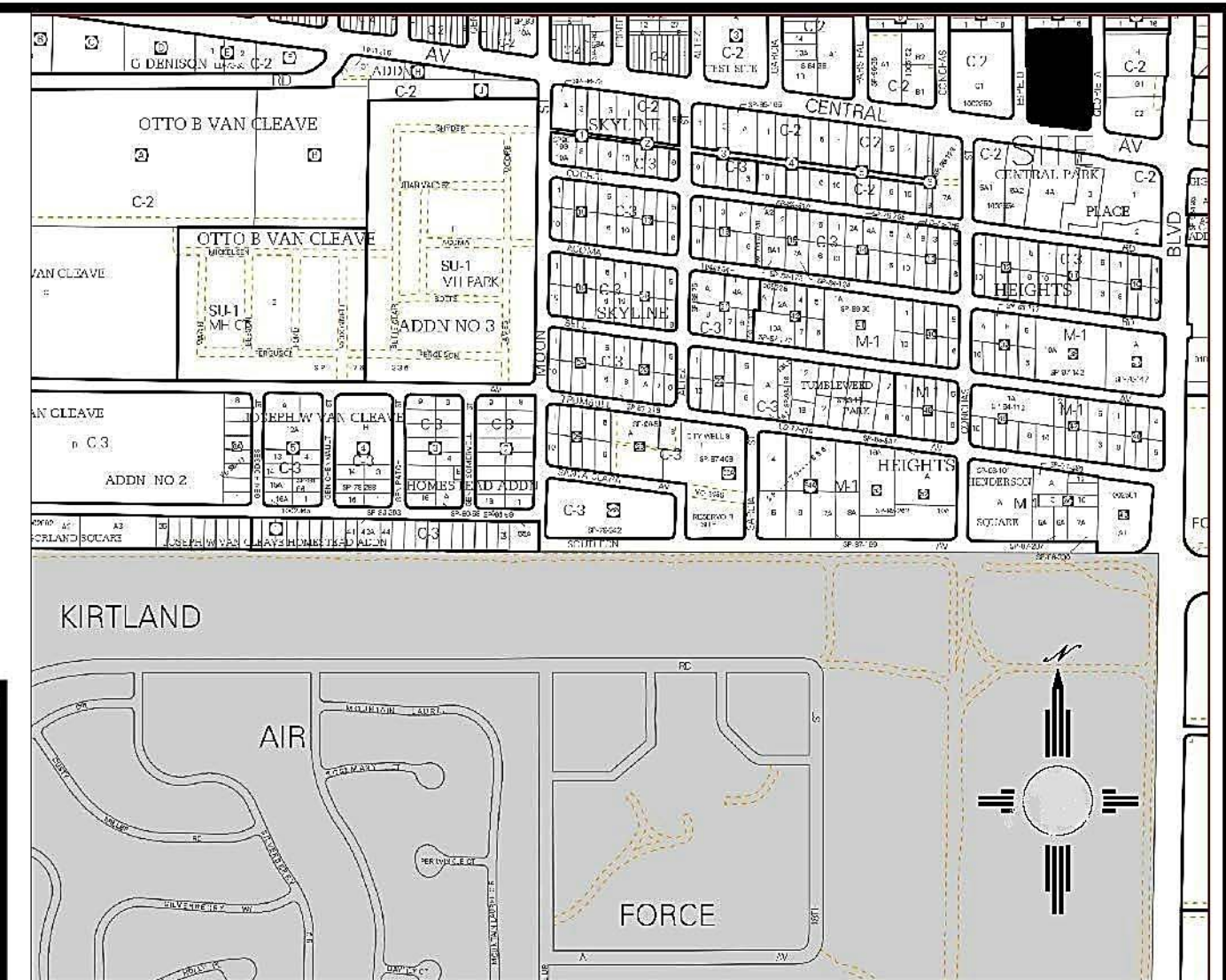
EROSION CONTROL NOTES:

1. CONTRACTOR IS RESPONSIBLE FOR OBTAINING A TOPSOIL DISTURBANCE PERMIT PRIOR TO BEGINNING WORK.
2. CONTRACTOR IS RESPONSIBLE FOR MAINTAINING RUN-OFF ON SITE DURING CONSTRUCTION.
3. CONTRACTOR IS RESPONSIBLE FOR CLEANING ALL SEDIMENT THAT GETS INTO EXISTING RIGHT-OF-WAY.
4. REPAIR OF DAMAGED FACILITIES AND CLEANUP OF SEDIMENT ACCUMULATIONS ON ADJACENT PROPERTIES AND IN PUBLIC FACILITIES IS THE RESPONSIBILITY OF THE CONTRACTOR.
5. ALL EXPOSED EARTH SURFACES MUST BE PROTECTED FROM WIND AND WATER EROSION PRIOR TO FINAL (CITY) ACCEPTANCE OF ANY PROJECT.

Legend

Erosion Sediment Control Plan

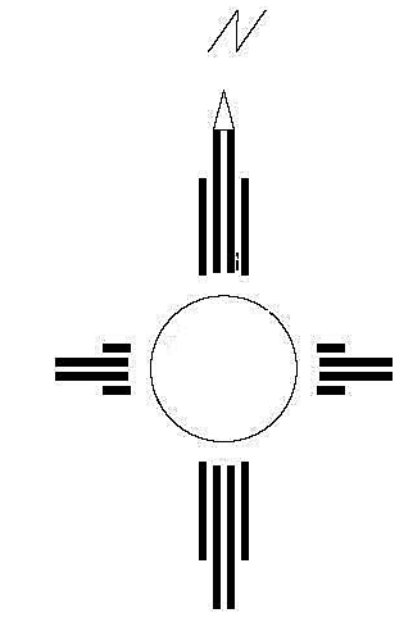
- Project Perimeter & Disturbed Area
- Pre Flow & Post Flow
- Outfall
- Retention Pond
- Stabilized Construction Entrance
- Posting Sign
- Staging Area
- Silt Fence
- Trash Receptacle
- Chemical Toilet
- Concrete Washout
- Construction Trailer
- Existing Fence



Glorieta Street NE
(60' R/W)

Espejo Street NE
(60' R/W)

Central Ave



GRAPHIC SCALE

SCALE: 1"=20'

ACS Monument "4_L22"
NAD:1983 CENTRAL ZONE
X=1663610.492
Y=1480509.445
Z=5586.425' (NAVD 1988)
G-C=0.999643379
Mapping Angle=-0°08'50.94"



Erosion Sediment Control Plan

East Central Gateway Plaza

Receiving Waters: Rio Grande 7.1 miles to the West.

Impairments to the Rio Grande.
Pathogens, PCBs, PCB in fish tissue, gross alpha, dissolved oxygen

Date: 6/30/2014