

CITY OF ALBUQUERQUE

Planning Department
Brennon Williams, Director



Mayor Timothy M. Keller

January 28, 2020

J. Graeme Means, P.E.
High Mesa Consulting Group
6010 B Midway Park Blvd NE
Albuquerque, NM 87109

RE: **International District Library**
7667 Central NE
Revised Grading and Drainage Plan Stamp Date: 1/23/20
Hydrology File: K19D005

Dear Mr. Means,

Based on the submittal received on 1/23/20, this project is re-approved for Building Permit.

PO Box 1293

Prior to Certificate of Occupancy (For Information):

Albuquerque

1. Engineer's Certification, per the DPM Chapter 22.7: *Engineer's Certification Checklist For Non-Subdivision* is required.
2. The public work order will need to be closed out and accepted by the City, unless a financial guarantee has been posted.

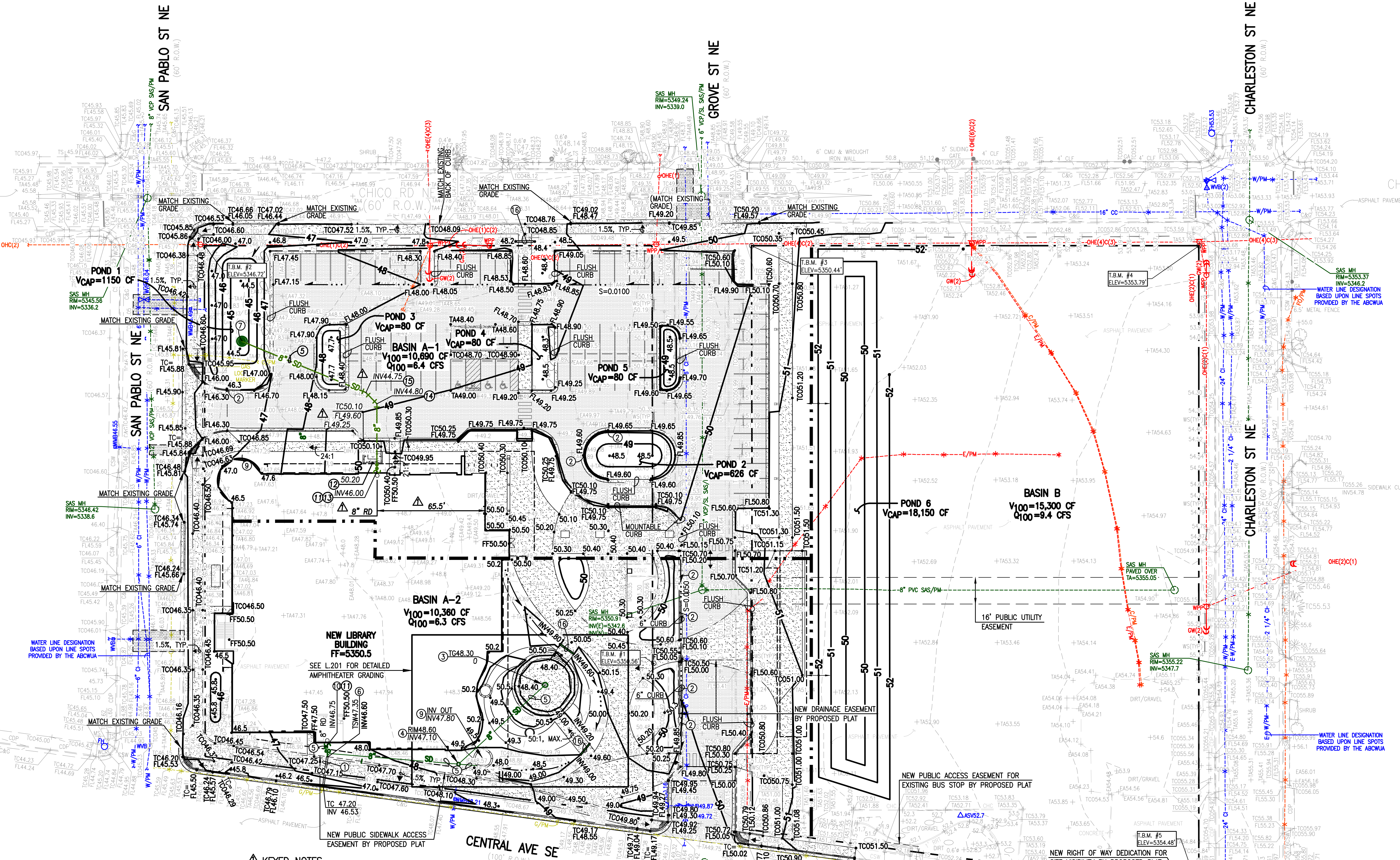
NM 87103

If you have any questions, please contact me at 924-3695 or dpeterson@cabq.gov.

www.cabq.gov

Sincerely,

Dana Peterson, P.E.
Senior Engineer, Planning Dept.
Development Review Services



KEYED NOTES

- NEW 24" SIDEWALK CULVERT PER COA STD DWG 2236 (BY SEPARATE WORK ORDER)
- NEW 12" CURB OPENING, SEE SHEET C100
- INSTALL 18" NYLOPLAST STORM INLET PER TYPICAL SECTION, SHEET C104
- INSTALL 24" NYLOPLAST STORM INLET WITH OIL/DEBRIS/WATER SEPARATOR (ENVIROHOOD 583AG041 OR APPROVED SUBSTITUTE), SHEET C104
- INSTALL 8" PVC SDR-35 STORM DRAIN @ $S=0.0065$
- CONNECT 8"x8" 90° WYE; CONNECT 8" PVC STORM DRAIN TO BACK OF SIDEWALK CULVERT
- CONSTRUCT 12" NYLOPLAST STORM INLET (BUBBLER) WITH OPEN BOTTOM AND 12" GRAVEL SUMP PER TYP. SECTION, SHEET C103, RIM 45.0, INV 42.0
- INSTALL 8" PVC STORM DRAIN @ $S=0.0300$
- NEW SPLASH POND WATER FEATURE (BASE BID), NEW "WATER FEATURE" CISTERN WITH PIPE OUTLET (ALTERNATE #1), SEE LANDSCAPING PLAN
- CONNECT 8" STORM DRAIN TO 8" ROOF DRAIN @ BUILDING, EXTEND 8" STORM DRAIN TO BACK OF SIDEWALK CULVERT
- CONSTRUCT DOUBLE CLEANOUTS @ CONNECTION TO BUILDING
- NEW "ROLL-OFF" REFUSE PAD, SEE ARCHI SITE PLAN
- CONNECT 8" STORM DRAIN TO 8" ROOF DRAIN @ BUILDING, CONSTRUCT DOUBLE CLEANOUTS @ BUILDING
- INSTALL 8" PVC SDR-35 45° BEND
- INSTALL 8" PVC SDR-35 22½° BEND
- CONSTRUCT 24" SIDEWALK CULVERT PER TYPICAL SECTION, SHEET C103

CONSTRUCTION NOTES

SEE SHEET C001 FOR CONSTRUCTION NOTES

LEGEND

SEE SHEET C001 FOR LEGEND

NOTE:

THIS IS NOT A BOUNDARY SURVEY OR A RIGHT OF WAY SURVEY. APPARENT PROPERTY CORNERS, RIGHT OF WAY LINES OR PROPERTY LINES AS SHOWN ARE DERIVED FROM A BOUNDARY SURVEY PREPARED BY HIGH MESA CONSULTING GROUP, NMPS 11184, DATED 04/30/2018 (2018.017.1). THE TOPOGRAPHIC INFORMATION DEPICTED HEREON IS BASED UPON THE "TOPOGRAPHIC AND UTILITY SURVEY" PREPARED BY HIGH MESA CONSULTING GROUP, NMPS NO. 11184, DATED 04/30/2018 (2018.017.1).

TEMPORARY BENCHMARK #1 (T.B.M.)

A MAG NAIL IN ASPHALT PAVEMENT, AS SHOWN ON THIS SHEET. ELEVATION = 5350.56 FEET (NAVD 1988)

TEMPORARY BENCHMARK #2 (T.B.M.)

A MAG NAIL W/WASHER STAMPED "CARTESIAN SURVEYS PLS 14271" ALSO BEING THE NORTH WEST PROPERTY CORNER OF BLOCK 2, AS SHOWN ON THIS SHEET. ELEVATION = 5346.72 FEET (NAVD 1988)

TEMPORARY BENCHMARK #3 (T.B.M.)

A MAG NAIL W/WASHER STAMPED "CARTESIAN SURVEYS PLS 14271" ALSO BEING THE NORTH WEST PROPERTY CORNER OF BLOCK 3, AS SHOWN ON THIS SHEET. ELEVATION = 5350.44 FEET (NAVD 1988)

TEMPORARY BENCHMARK #4 (T.B.M.)

A MAG NAIL W/WASHER STAMPED "CARTESIAN SURVEYS PLS 14271" ALSO BEING THE NORTH EAST PROPERTY CORNER OF BLOCK 3, AS SHOWN ON THIS SHEET. ELEVATION = 5353.79 FEET (NAVD 1988)

TEMPORARY BENCHMARK #5 (T.B.M.)

A MAG NAIL W/WASHER STAMPED "CARTESIAN SURVEYS PLS 14271" ALSO BEING THE SOUTH EAST PROPERTY CORNER OF BLOCK 3, AS SHOWN ON THIS SHEET. ELEVATION = 5354.48 FEET (NAVD 1988)



RMKM ARCHITECTURE, PC

400 Gold Ave SW Studio 1100 Albuquerque, NM 87102 505.243.5454 www.rmkmarch.com

HIGH MESA Consulting Group

6010-B Midway Park Blvd. NE • Albuquerque, New Mexico 87109
Phone: 505.345.4250 • Fax: 505.345.4254 • www.highmesacg.com

| NO. | ISSUE | DATE |
|--|--|-----------------------|
| 1 | ROOF DRAIN TIE-IN RELOCATION | 01/2020 |
| PROJECT | CITY OF ALBUQUERQUE | SCALE 1" = 30' |
| INTERNATIONAL DISTRICT LIBRARY (IDL) | RMKM PROJECT NO. 9225.74 COA 1706 RMKM | PROJECT MANAGER PM |
| 7667 CENTRAL AVE NE | MODELED BY RMKM | |
| SHEET TITLE GRADING PLAN | | |
| DESIGN PHASE 100% CONSTRUCTION DOCUMENTS 11 DECEMBER, 2019 | | |
| SHEET NUMBER | | |



2017.066.1

C101

12/11/2019 1/23/2020
Copyright © RMKM Architecture, P.C. 2018