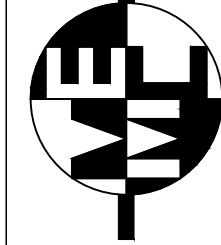
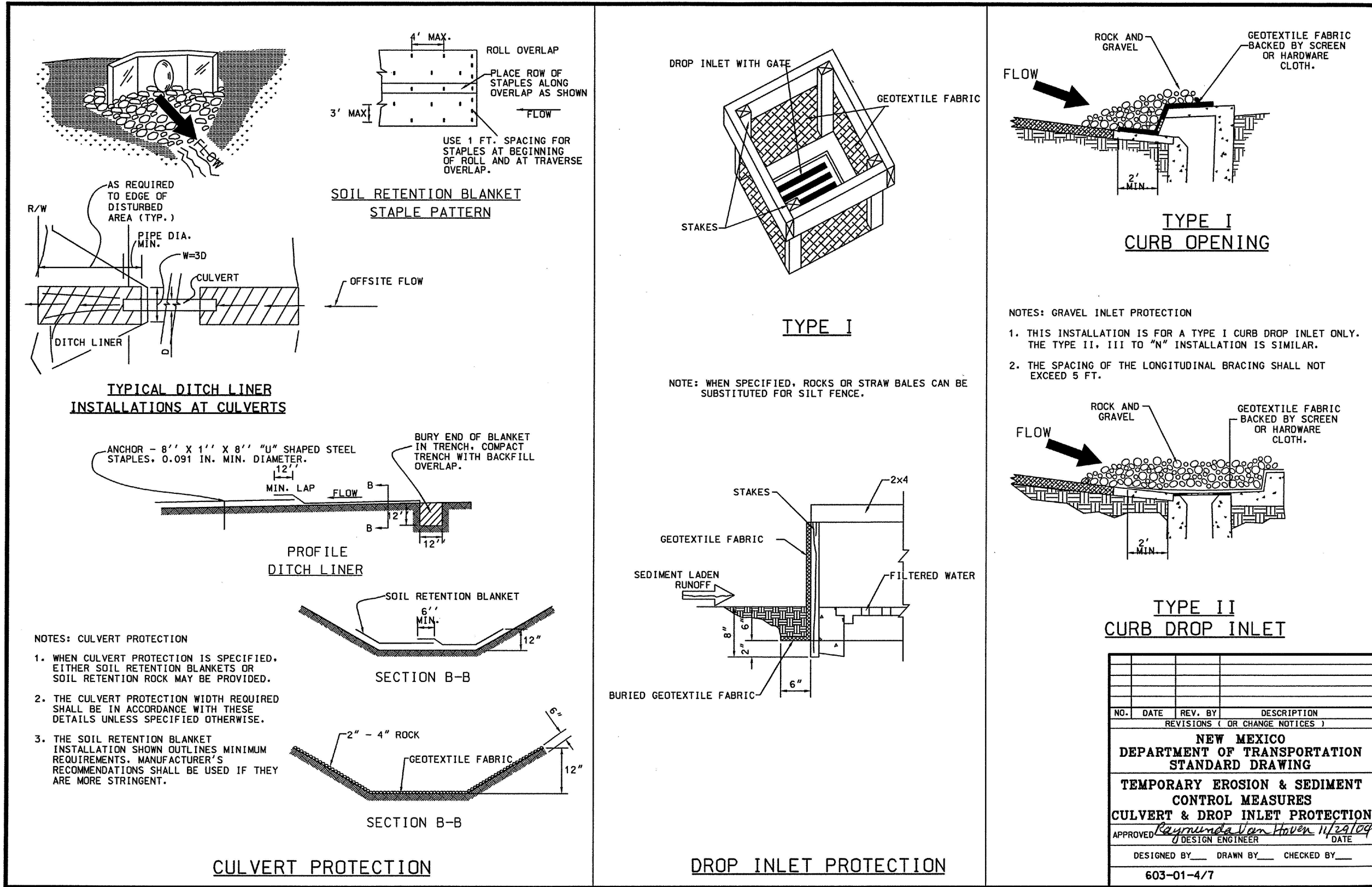
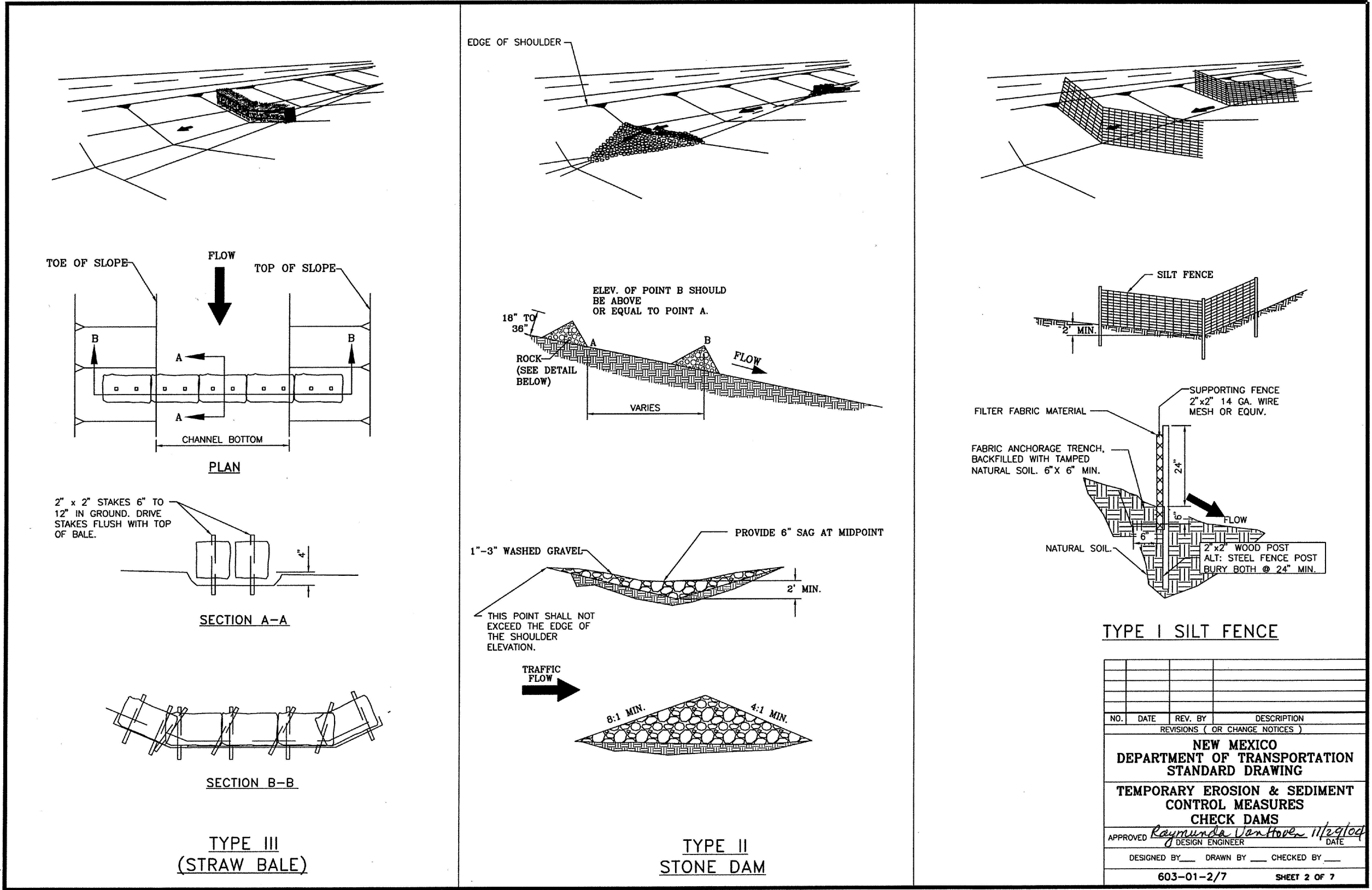


T:\Clients\Genesis KC Development\copper point\acad\sheet\Temp Erosion Sed. Plan_C-103.dwg, 11/17/2016 10:09:46 AM, DWG To PDF.pc3



MILLER ENGINEERING CONSULTANTS
Engineers • Planners

3500 COMANCHE, NE
BUIL. DING. F.
ALBUQUERQUE, NM 87107
(505)888.7500
(505)888.3800 (FAX)
WWW.MECNM.COM

| | | | |
|----------|-----|-------|----------|
| Designed | JMJ | Job # | 16-026 |
| Drawn | RA | File | C-103B |
| Checked | VAM | Date | 10-11-16 |

Engineers Stamp

NEW MEXICO

BERNALILLO COUNTY

DAVITA ALBUQUERQUE II

CITY OF ALBUQUERQUE, NEW MEXICO

TEMPORARY EROSION SEDIMENT
CONTROL DETAILS

| Date | Revision | Description |
|------|----------|-------------|
| | | |
| | | |
| | | |
| | | |
| | | |
| | | |
| | | |
| | | |
| | | |

Davita
at
Albuquerque II
10500 Copper Point Way NE
Albuquerque, New Mexico

SHEET NO.

C-103B