

# CITY OF ALBUQUERQUE



May 3, 2016

Rich Braun  
Studio SW Architects  
2101 Mountain Rd., NW  
Albuquerque, NM 87104

**Re: Manzano HS – Athletic Complex**  
**12200 Lomas Blvd., NE**  
**Traffic Circulation Layout**  
Engineer's/Architect's Stamp dated 4-25-16 (K22-D020)

Dear Mr. Braun,

The TCL submittal received 4-25-16 is approved for Building Permit. A copy of the stamped and signed plan will be needed for each of the building permit plans. Please keep the original to be used for certification of the site for final C.O. for Transportation.

When the site construction is completed and a Certificate of Occupancy (C.O.) is requested, use the original City stamped approved TCL for certification. Redline any minor changes and adjustments that were made in the field. A NM registered architect or engineer must stamp, sign, and date the certification TCL along with indicating that the development was built in "substantial compliance" with the TCL. Submit this certification TCL with a completed Drainage and Transportation Information Sheet to front counter personnel for log in and evaluation by Transportation.

Once verification of certification is completed and approved, notification will be made to Building Safety to issue Final C.O. To confirm that a final C.O. has been issued, call Building Safety at 924-3690.

Sincerely,

Racquel M. Michel, P.E.  
Traffic Engineer, Planning Dept.  
Development Review Services

\gs    via: email  
C:    File



# City of Albuquerque

Planning Department

Development & Building Services Division

## DRAINAGE AND TRANSPORTATION INFORMATION SHEET (REV 1/2016)

Project Title: MANZANO HS Building Permit #: 201690757 Hydrology File #: K22D020  
DRB#: N/A EPC#: N/A Work Order#: \_\_\_\_\_  
Legal Description: LOT MANZANO HIGH SCHOOL / UNPLATTE LANDS OF APS / ZONE R-1  
City Address: 12200 LOMAS BLVD, NE PAGE K-22

Applicant: STUDIO SW ARCHITECTS Contact: SAIGE COX / RICH BRAUN  
Address: 2101 MOUNTAIN RD NW / APO NM / 87104  
Phone#: 505-843-9639 Fax#: 505-843-9639 E-mail: SCOX@STUDIOSWARCH.COM  
Other Contact: APS Contact: DEVIN CANNADY  
Address: 915 OAK / APO  
Phone#: 505-200-1673 Fax#: \_\_\_\_\_ E-mail: DEVIN.CANNADY@APS.EDU

Check all that Apply:

### DEPARTMENT:

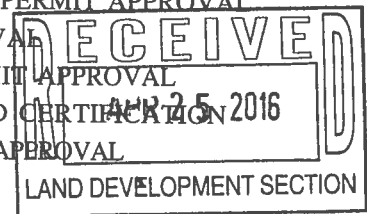
- ☐ HYDROLOGY/ DRAINAGE  
☒ TRAFFIC/ TRANSPORTATION  
☐ MS4/ EROSION & SEDIMENT CONTROL

### TYPE OF SUBMITTAL:

- ☐ AS-BUILT CERTIFICATION  
☐ CONCEPTUAL G & D PLAN  
☐ GRADING PLAN  
☐ DRAINAGE MASTER PLAN  
☐ DRAINAGE REPORT  
☐ CLOMR/LOMR  
☒ TRAFFIC CIRCULATION LAYOUT (TCL)  
☐ TRAFFIC IMPACT STUDY (TIS)  
☐ NEIGHBORHOOD IMPACT ASSESMENT (NIA)  
☐ EROSION & SEDIMENT CONTROL PLAN (ESC)  
☐ OTHER (SPECIFY) \_\_\_\_\_

### TYPE OF APPROVAL/ACCEPTANCE SOUGHT:

- ☒ BUILDING PERMIT APPROVAL  
☐ CERTIFICATE OF OCCUPANCY  
☐ GRADING/ESC PERMIT APPROVAL  
☐ PRELIMINARY PLAT APPROVAL  
☐ SITE PLAN FOR SUB'D APPROVAL  
☐ SITE PLAN FOR BLDG. PERMIT APPROVAL  
☐ FINAL PLAT APPROVAL  
☐ SIA/ RELEASE OF FINANCIAL GUARANTEE  
☐ FOUNDATION PERMIT APPROVAL  
☐ SO-19 APPROVAL  
☐ PAVING PERMIT APPROVAL  
☐ GRADING/ PAD CERTIFICATION  
☐ WORK ORDER APPROVAL  
☐ CLOMR/LOMR LAND DEVELOPMENT SECTION



☐ PRE-DESIGN MEETING?

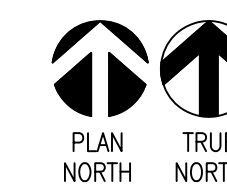
☐ OTHER (SPECIFY) \_\_\_\_\_

IS THIS A RESUBMITTAL?: ☐ Yes ☒ No

DATE SUBMITTED: 4-25-16 By: RDR

COA STAFF: ELECTRONIC SUBMITTAL RECEIVED: \_\_\_\_\_

FEE RECEIVED: \_\_\_\_\_



f. N/A

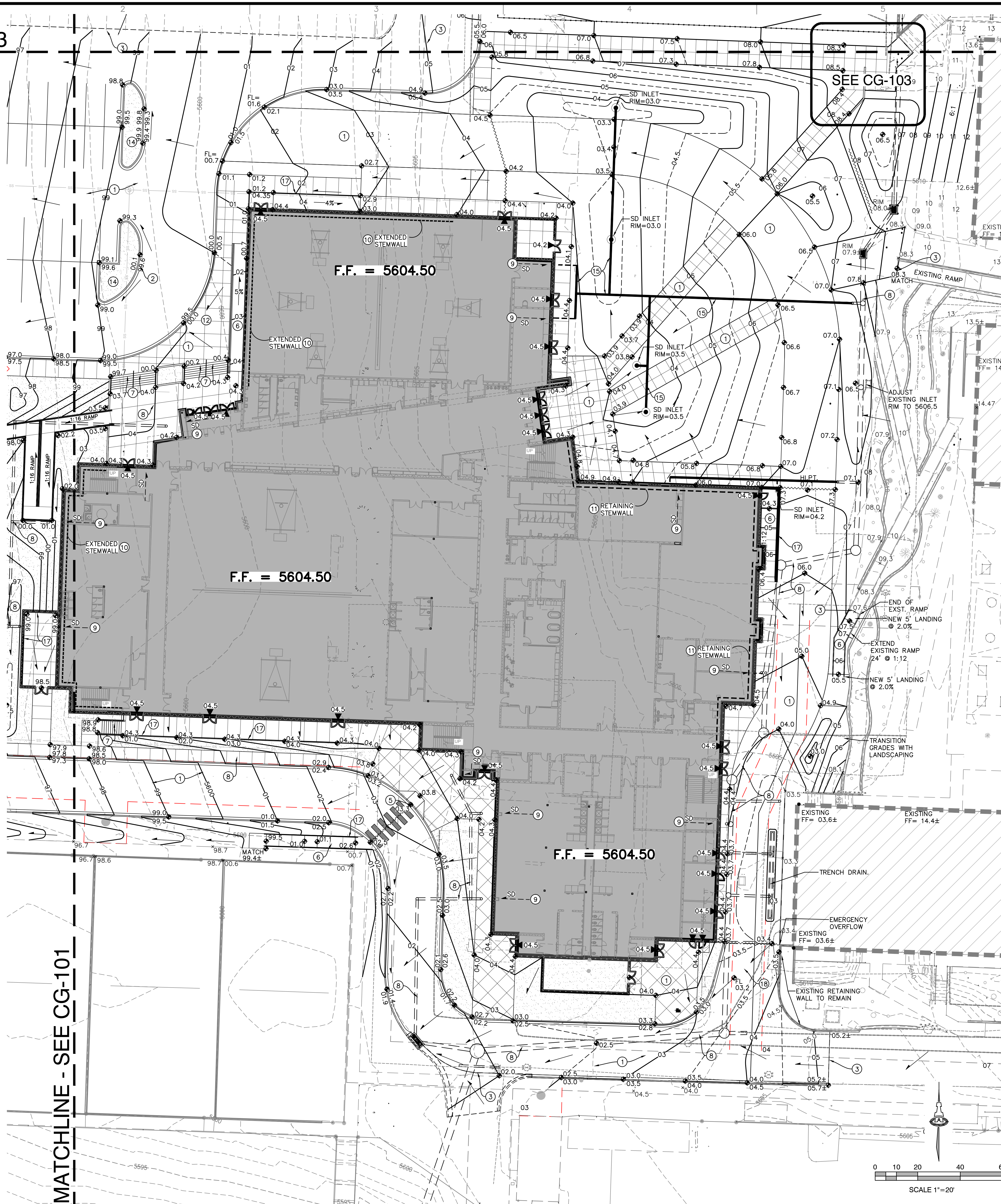


**A6 VICINITY MAP**  
N.T.S.

NT:

MATCHLINE - SEE CG-103

MATCHLINE - SEE CG-101



### KEYED NOTES

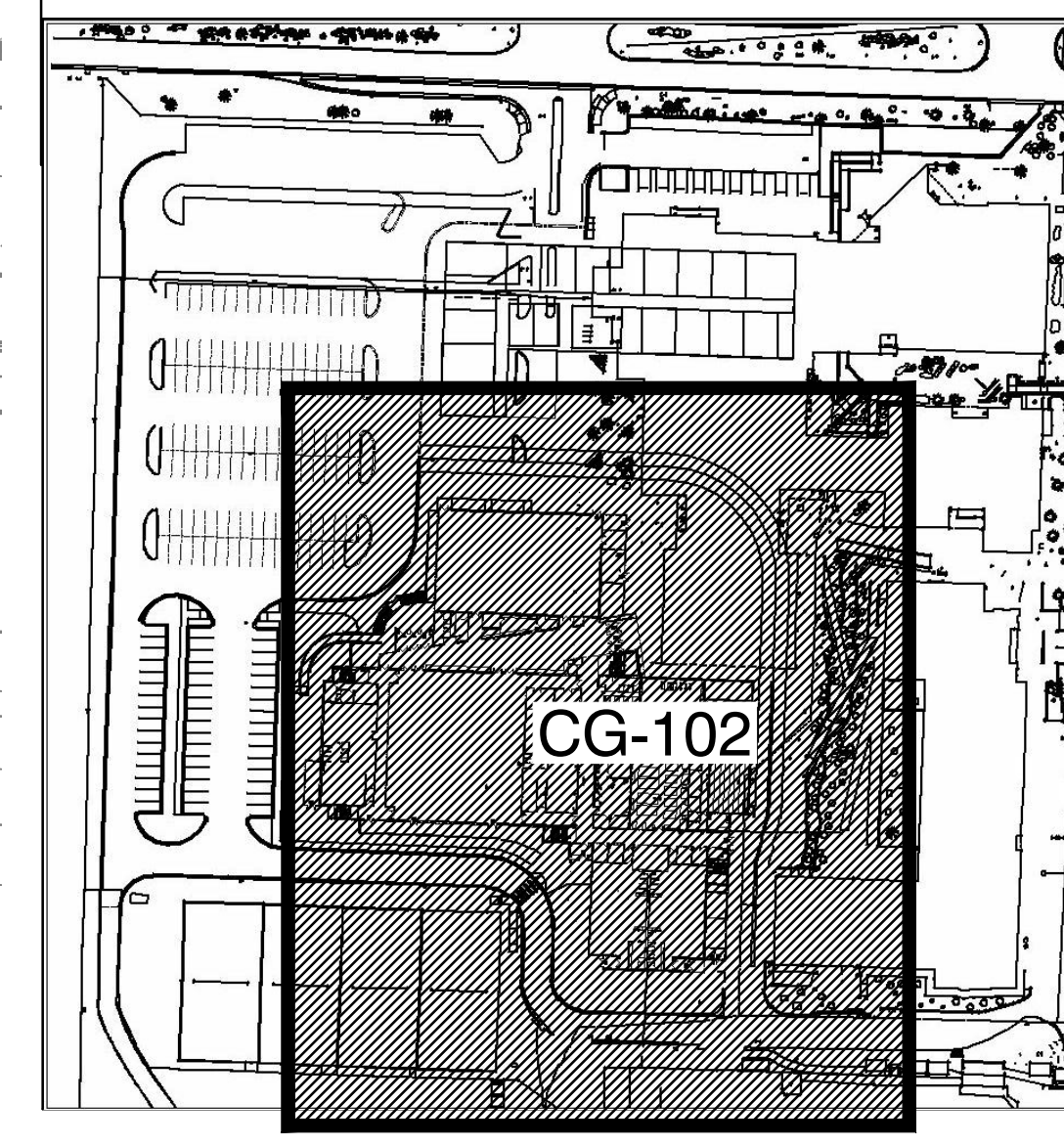
THE FOLLOWING KEYED NOTES ARE FOR USE ON SHEETS CG-101, CG-102 AND CG-103. NOT ALL NOTES ARE REFERENCED ON EACH SHEET.

1. CONSTRUCT NEW PAVEMENT, CURB AND GUTTER, SIDEWALKS AT ELEVATIONS SHOWN. SEE PAVING PLAN (CP-101) FOR ADDITIONAL INFORMATION.
2. TO ENSURE READABILITY, NOT ALL PAVEMENT SPOT ELEVATIONS SHOW ADJACENT TOP OF CURB / TOP OF WALK ELEVATION. TEXT SHOWN WITHIN FLOWLINE REPRESENTS FLOWLINE ELEVATION. ADD 0.5' TYPICAL FOR TOP OF ADJACENT CURB OR WALK ELEVATIONS UNLESS NOTED.
3. TRANSITIONS BETWEEN NEW AND EXISTING PAVEMENT SHALL BE SMOOTH.
4. SLOPE WITHIN HANDICAP PARKING AREA TO MEET ADA REQUIREMENTS. MAX. SLOPE = 2% IN ANY DIRECTION.
5. CONSTRUCT 1:12 (MAX.) SIDEWALK RAMP. SEE SHEET CP-501 PAVING DETAILS. TOP OF ASPHALT TO BE FLUSH WITH TOP OF CONCRETE EDGE FOR ADA COMPLIANCE.
6. SITE PEDESTRIAN ACCESS RAMP (1:12 MAX.) WITH RETAINING WALLS. SEE ARCHITECTURAL.
7. SITE EXTERIOR STAIRS/STEPS. SEE ARCHITECTURAL.
8. PORTION OF SITE STORM DRAIN SYSTEM TO BE INSTALLED PRIOR TO THIS PROJECT UNDER SEPARATE CONTRACT (BY OTHERS) SEE CG-501 FOR ADDITIONAL INFORMATION.
9. PROPOSED ROOF DISCHARGE LOCATION. SEE CG-501 FOR CONTINUATION.
10. CONSTRUCT EXTENDED STEM WALL TO ACHIEVE GRADE DIFFERENCE. SEE ARCHITECTURAL.
11. CONSTRUCT RETAINING STEM WALL TO ACHIEVE GRADE DIFFERENCE. SEE ARCHITECTURAL.
12. ONE-HALF FOOT DESIGN CONTOURS (0.5' INCREMENTS) SHOWN DASHED TO CLARIFY GRADING CONCEPT. SEE LEGEND FOR ADDITIONAL INFORMATION.
13. INSTALL COBBLE EROSION PROTECTION THIS AREA. NOTE: PER A.P.S. STANDARDS, ALL ROCK EROSION PROTECTION WITHIN THE SCHOOL SITE IS TO BE 6" AVG. DIA. ROUNDED ROCK EMBEDDED IN CONCRETE. NO LOOSE COBBLE SWALES OR EROSION PROTECTION SHALL BE ALLOWED ON A.P.S. DISTRICT PROPERTIES.
14. TYPICAL FOR LANDSCAPE: DEPRESS LANDSCAPING TO PROVIDE SHALLOW WATER HARVESTING BASIN. NOTE: NO WATER HARVESTING SHALL OCCUR WITHIN 10' OF BUILDINGS.
15. CONSTRUCT SITE STORM DRAIN SYSTEM THIS AREA AS PART OF PHASE II (FOLLOWING THE REMOVAL OF THE EXISTING GYM BUILDING.) SEE CG-501 FOR ADDITIONAL INFORMATION.
16. PROVIDE 18" WIDE OPENING IN CURB AT FLOWLINE ELEVATION SHOWN. SEE CG-501 FOR DETAIL.
17. CONSTRUCT SITE RETAINING WALL TO ACHIEVE REQUIRED GRADE DIFFERENCE AT ELEVATIONS SHOWN. SEE ARCHITECTURAL FOR ADDITIONAL INFORMATION INCLUDING GUARDRAILS WHERE REQUIRED.
18. CONSTRUCT 2' WIDE CONCRETE ALLEY GUTTER AT ELEVATIONS SHOWN.
19. CONSTRUCT 8" HIGH HEADER CURB TO DEFLECT UPSTREAM FLOW SOUTH TO PROPOSED POND. SEE ENLARGED DETAIL THIS SHEET FOR ADDITIONAL INFORMATION.

### LEGEND

- EXISTING CONTOUR
- PROPOSED 1' CONTOUR
- - - PROPOSED 0.5' CONTOUR
- 3.8 PROPOSED SPOT ELEVATION
- FLOW ARROW
- FF = 5604.50 FINISH FLOOR ELEVATION
- INV= INVERT ELEVATION
- FL= FLOWLINE ELEVATION
- - - - - PROPOSED STORM DRAIN
- ~~~~~ PROPOSED GRADE BREAK

### SITE KEY



**STUDIO**

**SW**

**ARCHITECTS**

STUDIO SOUTHWEST ARCHITECTS, INC.  
2101 Mountain Rd. NW, Albuquerque, NM 87104  
505.843.9639 fax 505.843.9683  
Web Site: [www.studioswarch.com](http://www.studioswarch.com)  
E-Mail: [mail@studioswarch.com](mailto:mail@studioswarch.com)

CONSULTANTS

**ISAACSON & ARFMAN, P.A.**  
Consulting Engineering Associates  
128 Monroe Street N.E.  
Albuquerque, New Mexico 87108  
Ph. 505-268-8828 [www.isacn.com](http://www.isacn.com)  
2091 CG-101.dwg Mar 30, 2016

Architect Engineer

**MANZANO HIGH SCHOOL GYMNASIUM**  
LOMAS BLVD  
ALBUQUERQUE, NM

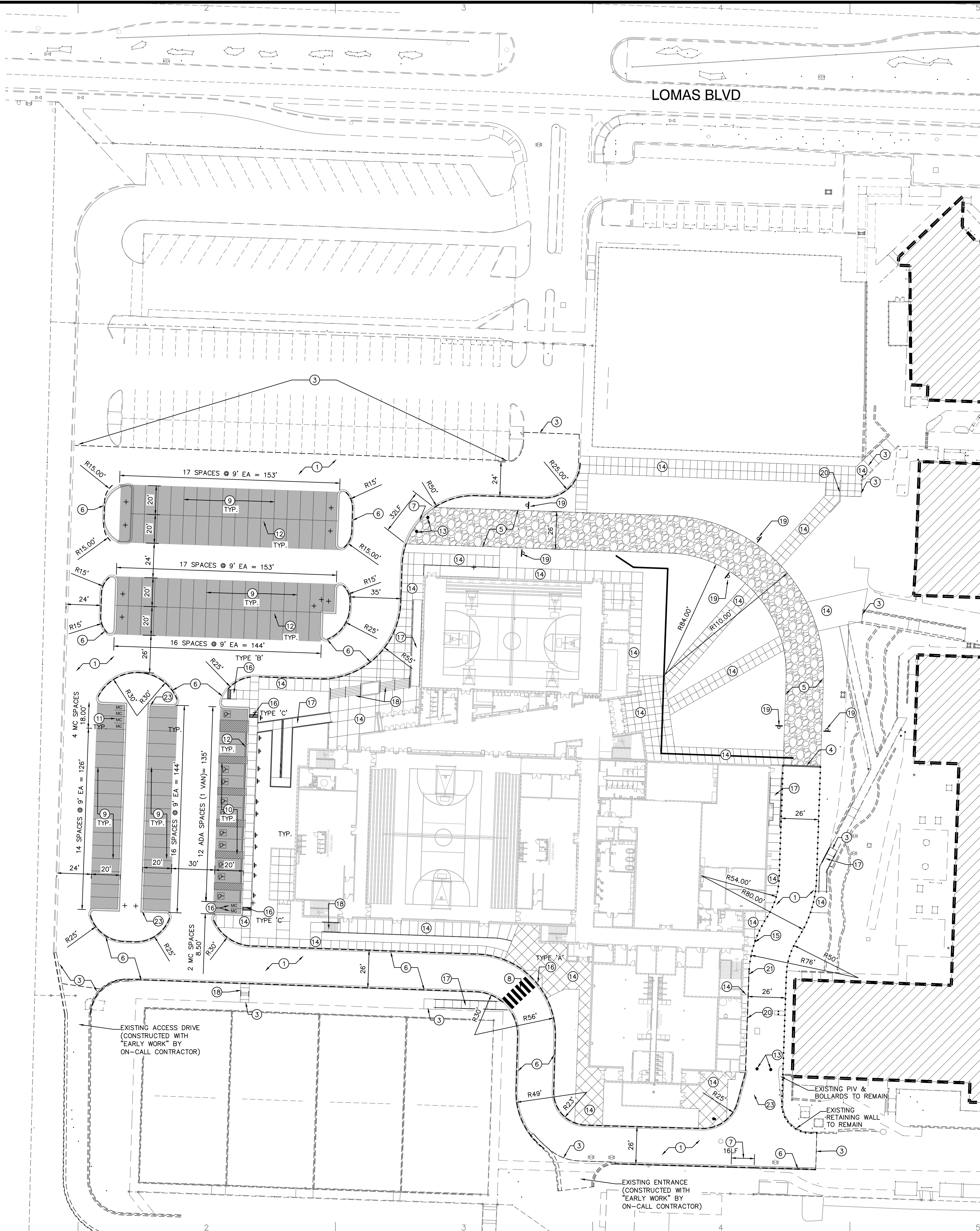
Key Plan

MARK	DATE	DESCRIPTION
ISSUE:		PERMIT
PROJECT NO:		1401
CAD DWG FILE:		
DRAWN BY:		ANW
CHECKED BY:		APRIL 1, 2016
DATE:		

SHEET TITLE

**GRADING AND DRAINAGE PLAN**  
2 OF 3

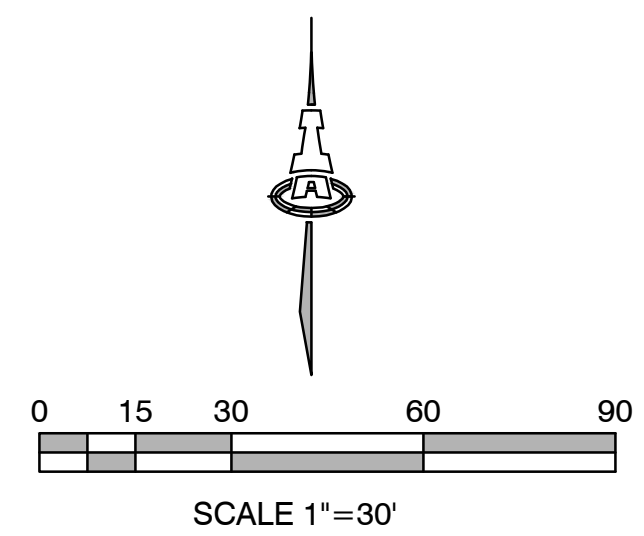
**CG-102**



- ### KEYED NOTES
- SEE SHEET CG-501 FOR GENERAL PAVING NOTES
1. CONSTRUCT HEAVY DUTY PAVING PER SECTION ON SHEET CP-501 (DRIVE AISLES - UNSHADED).
  2. CONSTRUCT LIGHT DUTY PAVING PER SECTION ON SHEET CP-501 (PARKING AREAS - SHOWN SHADED );
  3. PROVIDE SMOOTH TRANSITION BETWEEN NEW AND EXISTING ASPHALT / CURB / WALK.
  4. CONSTRUCT CONCRETE CUT-OFF WALL AT END OF ASPHALT PAVING; BEGIN AGGREGATE BASE COURSE PAVING. SEE DETAIL ON SHEET CP-501
  5. CONSTRUCT AGGREGATE BASE COURSE PAVING PER SECTION ON SHEET CP-501 --- PHASE II.
  6. CONSTRUCT MEDIAN CURB & GUTTER PER DETAIL ON SHEET CP-501.
  7. CONSTRUCT MOUNTABLE MEDIAN CURB (LENGTH PER PLAN) PER DETAIL ON SHEET CP-501. TRANSITION FROM MEDIAN CURB TO MOUNTABLE MEDIAN CURB OVER 5' EACH SIDE.
  8. INSTALL 24" WIDE, 10' LONG WHITE CROSSING STRIPES @ 4' O.C.
  9. INSTALL WHITE STRIPING PER DETAIL ON SHEET AS-501.
  10. INSTALL BLUE STRIPING AND HANDICAP SYMBOLS AND SIGNAGE PER DETAIL ON SHEET AS-501.
  11. PAINT WORD "MC" IN WHITE.
  12. INSTALL PARKING BUMPER PER DETAIL ON SHEET AS-501.
  13. INSTALL 2-EA REMOVABLE GUARD POSTS PER COA STD DWG #2250.
  14. CONSTRUCT 4" THICK PCC SIDEWALK WITH BROOM FINISH. PROVIDE WITH CONTROL AND EXPANSION JOINTS AS SHOWN SEE DETAIL ON SHEET CP-501.
  15. CONCRETE FLUSH WITH PAVEMENT.
  16. CONSTRUCT ADA CURB RAMP (TYPE A, B OR C PER PLAN) WITH TRUNCATED DOMES PER DETAILS ON SHEET CP-501.
  17. CONSTRUCT ADA COMPLIANT PEDESTRIAN RAMP. SEE AS-501 AND AS-502.
  18. CONSTRUCT STAIRS WITH HANDRAIL. SEE AS-501 AND AS-502.
  19. INSTALL "NO PARKING FIRE LANE" SIGN ON POST.
  20. INSTALL 8" HIGH HEADER CURB PER DETAIL ON SHEET CP-501.
  21. TRANSITION HEADER CURB FROM 8" HIGH TO 0".
  22. 2' VALLEY GUTTER PER DETAIL ON SHEET CP-501.
  23. 18" WIDE CURB OPENING PER DETAIL ON SHEET CG-501.

### FIRE LANE MARKINGS LEGEND

- ..... NEW 6" WIDE RED STRIPE IN RED TRAFFIC PAINT W/ ALTERNATING TEXT "NO PARKING" AND "FIRE LANE" STENCILED IN WHITE TRAFFIC PAINT @ 10' O.C.
- PAINT FACE AND TOP OF CURB RED, AND PAINT WHITE STENCILED LETTERING "NO PARKING" AND "FIRE LANE" AT 30' O.C.



# STUDIO

## SW ARCHITECTS

STUDIO SOUTHWEST ARCHITECTS, INC.  
2101 Mountain Rd. NW, Albuquerque, NM 87104  
505.843.9639 fax 505.843.9683  
Web Site: [www.studioswarch.com](http://www.studioswarch.com)  
E-Mail: [mail@studioswarch.com](mailto:mail@studioswarch.com)

© 2009, Studio Southwest Architects, Inc.  
Duplication or reproduction by any means without the express written consent of Studio Southwest Architects, Inc. is a violation of Federal and international law. The information contained on this document is the intellectual property of Studio Southwest, Inc. and all rights thereto are Reserved. For exceptions, refer to the Owner-Architect Agreement.

CONSULTANTS

**ISAACSON & ARFMAN, P.A.**  
Consulting Engineering Associates  
128 Monroe Street N.E.  
Albuquerque, New Mexico 87108  
Ph. 505-268-8828 [www.iacivil.com](http://www.iacivil.com)  
2091 CP-101.dwg Mar 30, 2016

Architect Engineer

### MANZANO HIGH SCHOOL GYMNASIUM

LOMAS BLVD  
ALBUQUERQUE, NM

Key Plan

NTS

MARK	DATE	DESCRIPTION
ISSUE:		PERMIT
PROJECT NO:		1401
CAD DWG FILE:		2091 CP-101.dwg
DRAWN BY:		JTS
CHECKED BY:		ANW
DATE:		APRIL 1, 2016

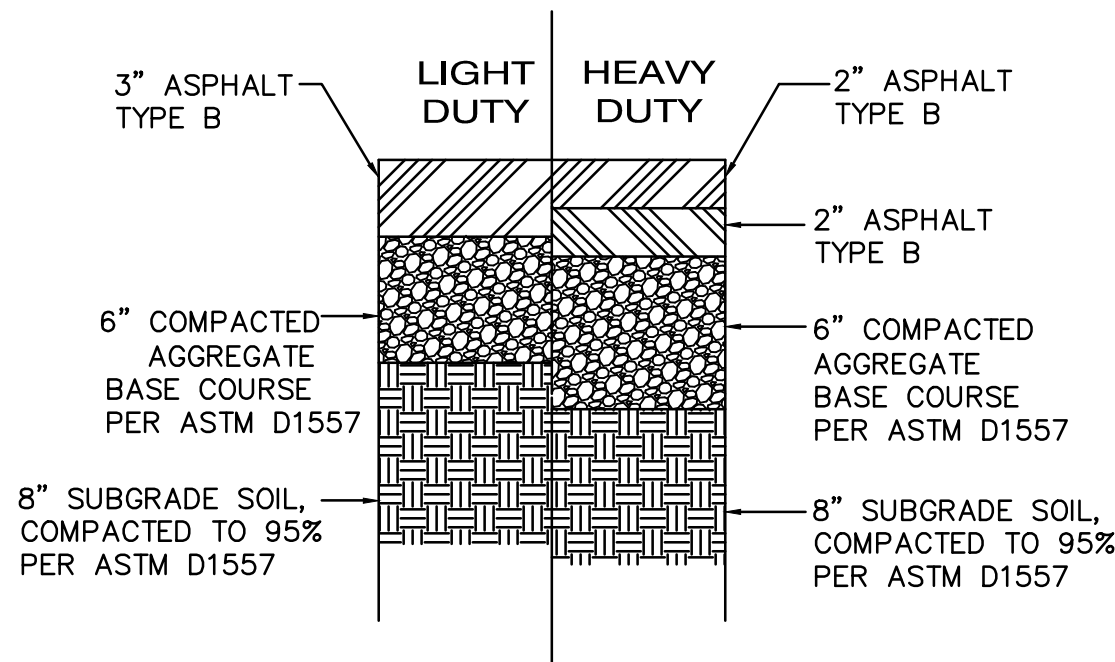
SHEET TITLE

## PAVING PLAN

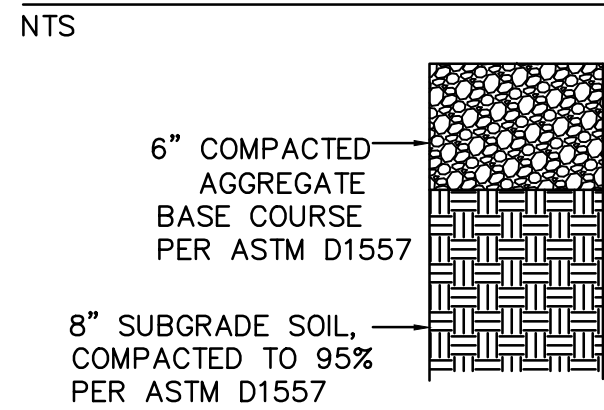
# CP-101

## GENERAL PAVING NOTES

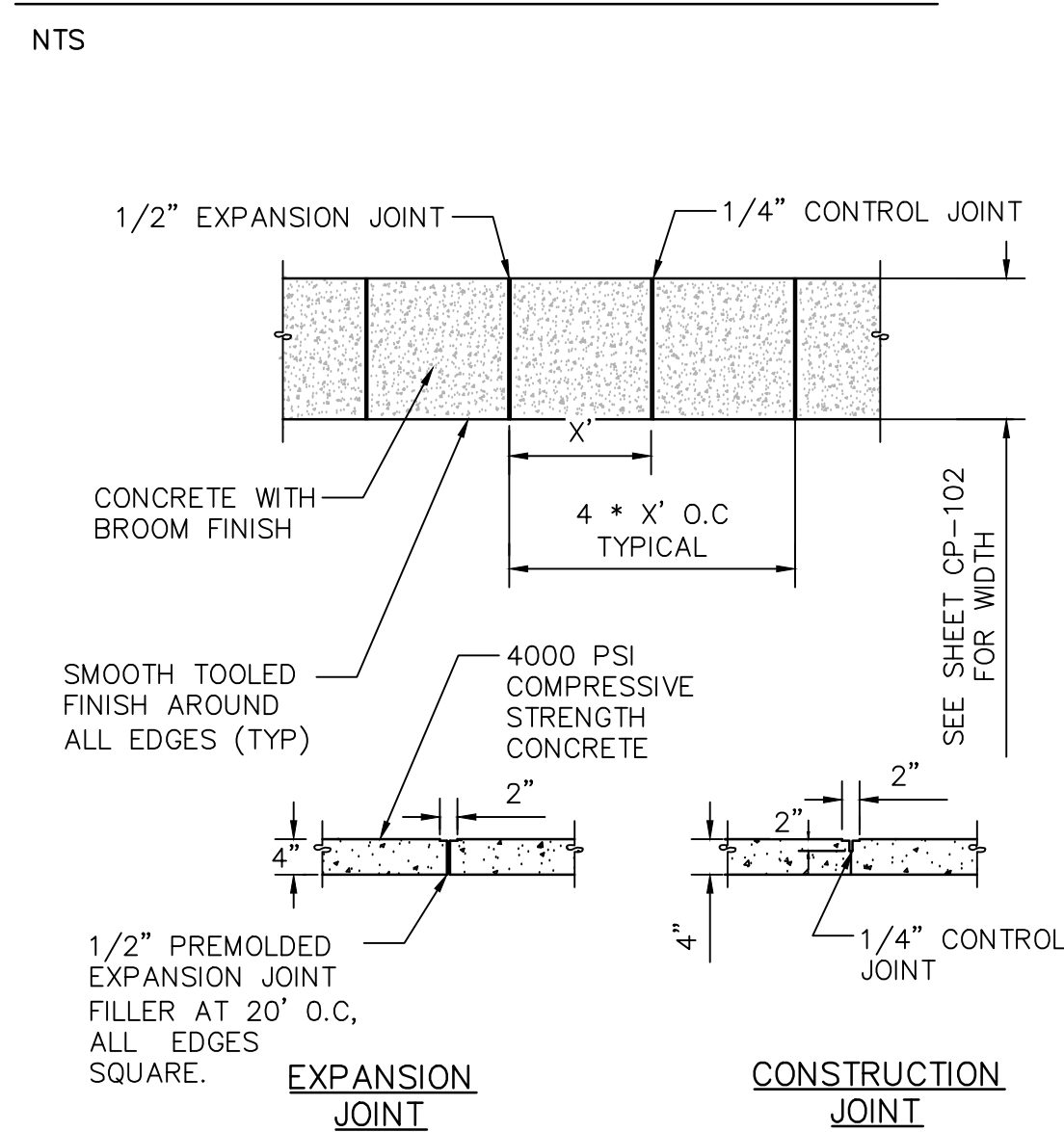
- A. SEE SHEET CG-101 FOR GRADES.
- B. SEE ARCHITECTURAL FOR DEMOLITION PLAN.
- C. ALL WORK DETAILED ON THESE PLANS TO BE PERFORMED UNDER CONTRACT SHALL, EXCEPT AS OTHERWISE STATED OR PROVIDED FOR HEREON, BE CONSTRUCTED IN ACCORDANCE WITH THE CURRENT EDITION OF THE CITY OF ALBUQUERQUE STANDARD SPECIFICATIONS FOR PUBLIC WORKS (COA SPEC.).
- D. NO WORK SHALL BE PERFORMED WITHOUT THE APPROPRIATE PERMITS, AS ISSUED BY LOCAL, STATE, OR FEDERAL AUTHORITIES. THE CONTRACTOR IS SOLELY RESPONSIBLE FOR OBTAINING PERMITS.
- E. THE CONTRACTOR SHALL BE SOLELY RESPONSIBLE FOR SITE SAFETY.
- F. THE CONTRACTOR SHALL BE RESPONSIBLE FOR THE COMPLETE INSTALLATION OF ALL WORK RELATED TO PROPOSED PAVING SHOWN ON THIS PLAN INCLUDING: ASPHALT AND OR CONCRETE PAVING, CURBS, GUTTERS, SIDEWALKS, RAMPS, PAVEMENT MARKINGS AND SIGNAGE. ANY WORK NOT ACCEPTED BY THE ARCHITECT OR ENGINEER DUE TO IMPROPER WORKMANSHIP OR LACK OF PROPER COORDINATION SHALL BE REMOVED AND CORRECTLY INSTALLED AT THE CONTRACTOR'S EXPENSE, AS DIRECTED.
- G. VIBRATORY COMPACTION SHALL NOT BE USED OVER IN-PLACE UTILITIES.
- H. EXISTING UTILITY LINES ARE SHOWN IN AN APPROXIMATE MANNER ONLY AND MAY BE INCOMPLETE OR OBSOLETE. SUCH LINES MAY OR MAY NOT EXIST WHERE SHOWN OR NOT SHOWN. CONTRACTOR SHALL CONTACT NM-811 FOR UTILITY LINE SPOTS TWO WORKING DAYS PRIOR TO CONDUCTING SITE FIELD WORK. CONTRACTOR SHALL FIELD VERIFY AND LOCATE ALL UTILITIES PRIOR TO COMMENCEMENT OF ANY CONSTRUCTION. CONTRACTOR IS FULLY RESPONSIBLE FOR ANY AND ALL DAMAGE CAUSED BY ITS FAILURE TO LOCATE, IDENTIFY AND PRESERVE ANY AND ALL EXISTING UTILITIES, PIPELINES, AND UNDERGROUND UTILITY LINES. THE CONTRACTOR SHALL BE RESPONSIBLE FOR COORDINATION OF NECESSARY DRY UTILITY ADJUSTMENTS.
- I. CONTRACTOR SHALL OBTAIN ALL REQUIRED INSPECTIONS OF THE WORK. CONTRACTOR SHALL REGULARLY UPDATE OWNER AND ARCHITECT REGARDING THE STATUS OF THE INSPECTIONS.
- J. ALL PAVING, INCLUDING ASPHALT PAVEMENT, CONCRETE PAVEMENT, CURBS, GUTTERS, SIDEWALKS, AND RAMPS SHALL BE CONSTRUCTED IN ACCORDANCE WITH COA SPEC. SECTION 300.
- K. ALL PAVEMENT MARKINGS AND SIGNAGE SHALL BE INSTALLED IN ACCORDANCE WITH THE MANUAL OF UNIFORM TRAFFIC CONTROL DEVICES (MUTCD), CURRENT EDITION, AND COA SPEC. SECTION 400.
- L. CONSTRUCTION ACTIVITY SHALL BE LIMITED TO THE PROPERTY AND/OR PROJECT LIMITS. ANY DAMAGE TO ADJACENT STRUCTURES RESULTING FROM THE CONSTRUCTION PROCESS SHALL BE REPAIRED OR REPLACED AT THE CONTRACTOR'S EXPENSE. CONTRACTOR SHALL BE RESPONSIBLE FOR DOCUMENTING EXISTING CONDITIONS PRIOR TO CONSTRUCTION.
- M. CONSTRUCTION EQUIPMENT SHALL NOT OBSTRUCT DRIVEWAYS. EQUIPMENT SHALL ONLY OBSTRUCT DESIGNATED TRAFFIC LANES IF APPROPRIATE BARRICADING PERMITS HAVE BEEN OBTAINED. THE CONTRACTOR SHALL NOT STORE ANY EQUIPMENT OR MATERIAL IN THE RIGHT-OF-WAY.
- N. THE CONTRACTOR SHALL PROVIDE A CONSTRUCTION TRAFFIC CONTROL AND SIGNING PLAN THAT CONFORMS TO THE LATEST EDITION OF THE "MANUAL OF UNIFORM TRAFFIC CONTROL DEVICES" (MUTCD) AND LOCAL REQUIREMENTS. THE CONTRACTOR SHALL OBTAIN BARRICADING PERMITS FROM THE APPROPRIATE AUTHORITIES PRIOR TO ANY CONSTRUCTION WORK ON OR ADJACENT TO EXISTING STREETS.
- O. THE CONTRACTOR SHALL MAINTAIN ALL BARRICADING AND CONSTRUCTION SIGNING AT ALL TIMES. THE CONTRACTOR SHALL VERIFY THE PROPER LOCATION OF ALL BARRICADING AT THE END AND BEGINNING OF EACH DAY.
- P. SOIL TESTING AND INSPECTION SERVICES DURING PAVING OPERATIONS ARE REQUIRED. CONTRACTOR SHALL ALLOW TESTING LABS TO INSPECT AND APPROVE COMPACTED SUBGRADES, BACKFILL, AND FILL LAYERS BEFORE FURTHER CONSTRUCTION WORK IS DONE. SHOULD COMPACTION TESTS INDICATE INADEQUATE DENSITY, CONTRACTOR SHALL PROVIDE ADDITIONAL COMPACTION AND TESTING AT THE CONTRACTOR'S SOLE EXPENSE.
- Q. CONTRACTOR SHALL PROVIDE ALL OTHER CONSTRUCTION STAKING. CONTRACTOR SHALL LOCATE AND PRESERVE ALL BOUNDARY CORNERS AND REPLACE ANY LOST OR DISTURBED CORNERS AT CONTRACTOR'S SOLE EXPENSE. PROPERTY CORNERS SHALL ONLY BE RESET BY A REGISTERED LAND SURVEYOR.
- R. ALL PAVEMENT INSTALLATION WORK SHALL BE CONSTRUCTED IN ACCORDANCE WITH THE GEOTECHNICAL REPORT, WHICH WILL BE PROVIDED BY THE OWNER OR ARCHITECT. ALL OTHER WORK SHALL, UNLESS OTHERWISE NOTED IN THE PLANS, BE CONSTRUCTED IN ACCORDANCE WITH THE COA STANDARD SPECIFICATIONS FOR PUBLIC WORK.
- S. ADJUST ANY RIMS OR COVERS OF EXISTING UTILITY FEATURES AS NECESSARY TO MATCH NEW GRADES. RIMS AND COVERS IN PAVED AREAS SHALL BE HS-25 TRAFFIC RATED.
- T. FIVE WORKING DAYS PRIOR TO ANY EXCAVATION, THE CONTRACTOR MUST CONTACT NEW MEXICO ONE CALL SYSTEM (811) FOR LOCATION OF EXISTING UTILITIES.
- U. ALL FACE OF CURB RADII ARE 3' UNLESS OTHERWISE DIMENSIONED.



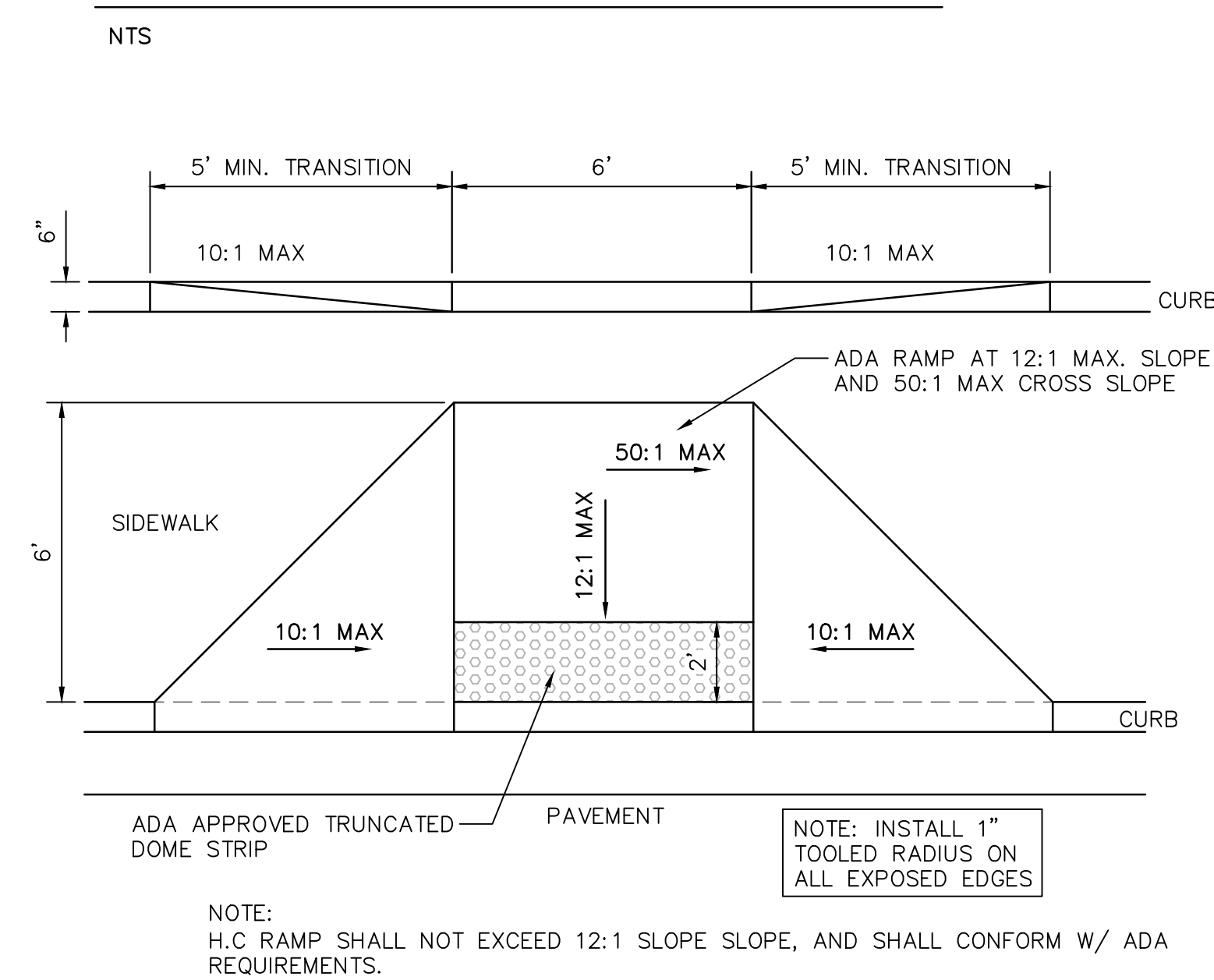
## ASPHALT PAVING SECTIONS



## AGGREGATE BASE COURSE SECTION

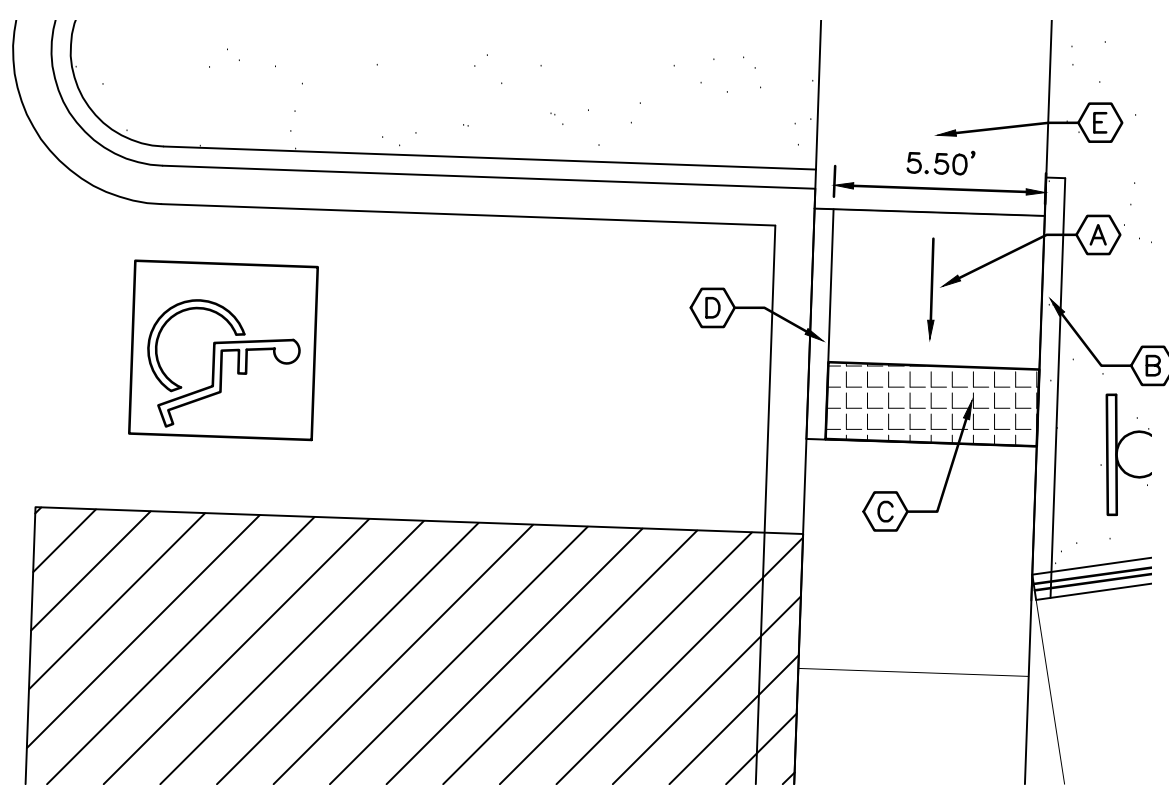


## TYPICAL SIDEWALK



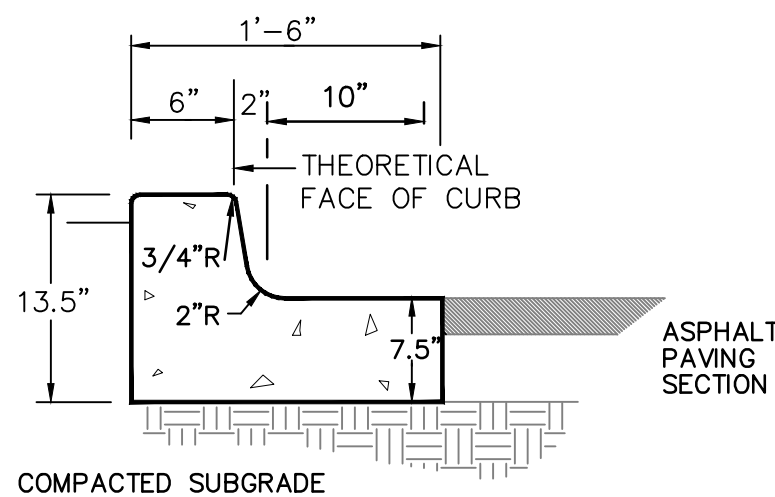
## ADA RAMP - TYPE 'A'

NTS



## ADA RAMP - TYPE 'C'

1"=5'

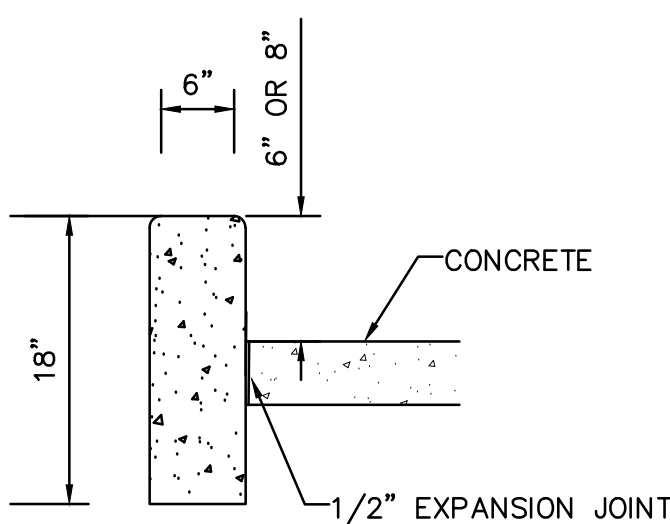


## MEDIAN CURB AND GUTTER

NTS

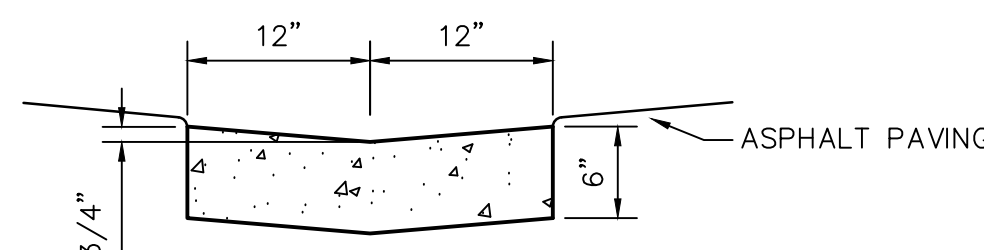
### GENERAL NOTES FOR MEDIAN AND HEADER CURB:

- 3000 PSI CONCRETE.
- PROVIDE CONTRACTION JOINTS @ 10' O.C. MAX. SAWED OR TOOLED 1" DEEP AT ALL FINISH FACES.
- PROVIDE 1/2" EXPANSION JOINTS @ CURB RETURNS AND MIN. 100' SPACING BETWEEN RETURNS.
- EDGES SHOULD BE REMOVED WITH 3/8" EDGING TOOL.



## HEADER CURB

NTS

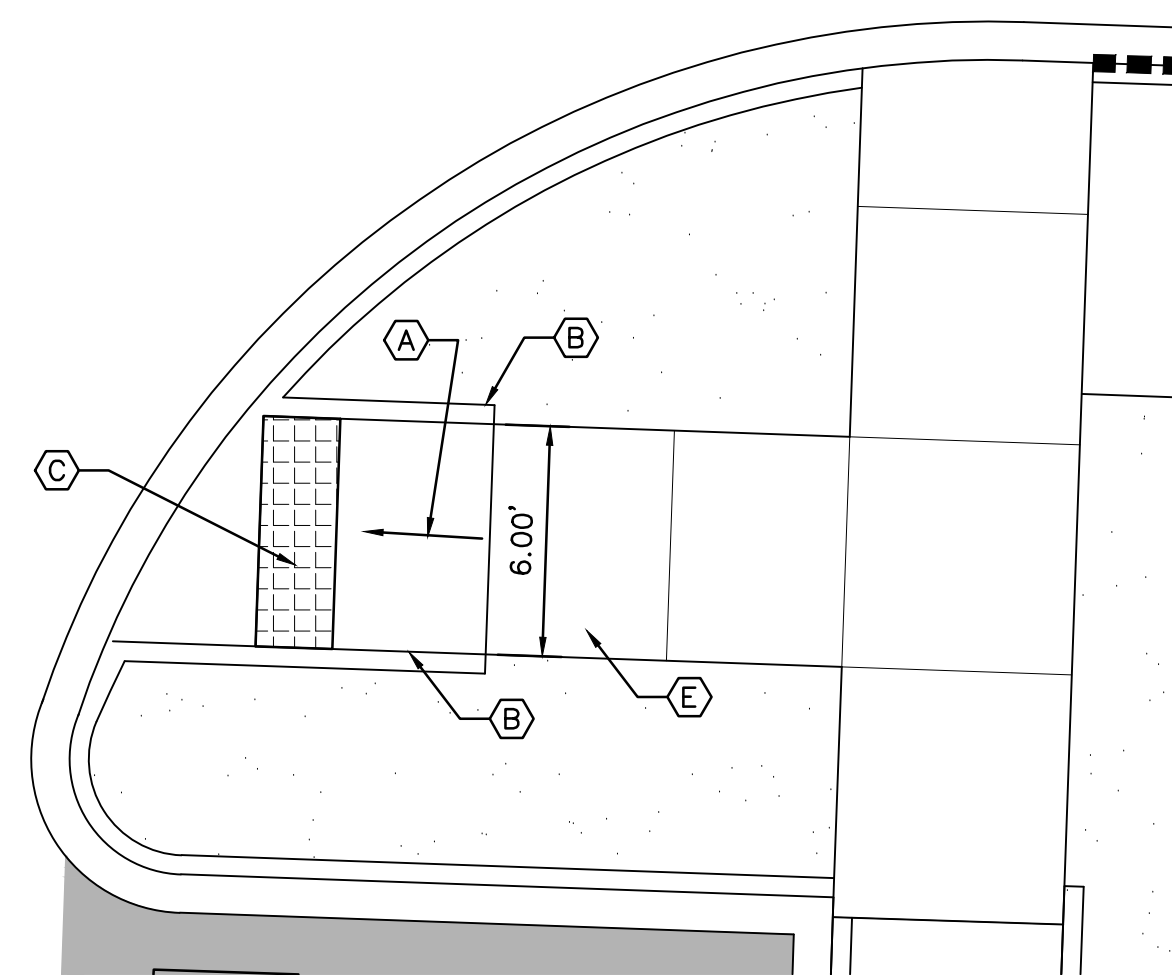


### GENERAL NOTES

- EDGES SHALL BE SHAPED WITH A 3/8" EDGING TOOL.
- CONSTRUCTION CONTROL JOINTS AT 6' O.C. MAX.
- 1/2" EXPANSION JOINTS 48' O.C., CURB RETURNS AND EACH SIDE OF DRIVES.
- EDGE OF ASPHALT PAVING TO BE 1/2" ABOVE EDGE OF CONCRETE (TYP).

## ALLEY GUTTER

NTS



## ADA RAMP - TYPE 'B'

1"=5'

### GENERAL NOTES

- RAMPS AND TRUNCATED DOMES SHALL BE PER ADA ACCESSIBILITY GUIDELINES (ADAAG).
- PAYMENT FOR TRUNCATED DOMES IS INCIDENTAL TO ADA ACCESSIBLE RAMP PAYMENT ITEM.

### ADA RAMP KEYED NOTES

- PCC RAMP AT 12:1 MAX. SLOPE AND 50:1 MAX CROSS SLOPE.
- 6" HEADER CURB.
- TRUNCATED DOMES, 2" DEEP.
- TRANSITION CURB FROM 6" TO 0" THROUGH RAMP.
- 5'X5' MIN. LANDING AREA AT MAX 2% CROSS SLOPE.

## KEYED NOTES



STUDIO SOUTHWEST ARCHITECTS, INC.  
2101 Mountain Rd. NW, Albuquerque, NM 87104  
505.843.9639 fax 505.843.9683  
Web Site: [www.studioswarch.com](http://www.studioswarch.com)  
E-Mail: [mail@studioswarch.com](mailto:mail@studioswarch.com)

© 2009, Studio Southwest Architects, Inc.  
Duplication or reproduction by any means without the express written consent of Studio Southwest Architects, Inc. is a violation of Federal and international law. The information contained on this document is the intellectual property of Studio Southwest, Inc. and all rights therein are Reserved. For exceptions, refer to the Owner-Architect Agreement.

### CONSULTANTS

ISAACSON & AREMAN, P.A.  
Consulting Engineering Associates

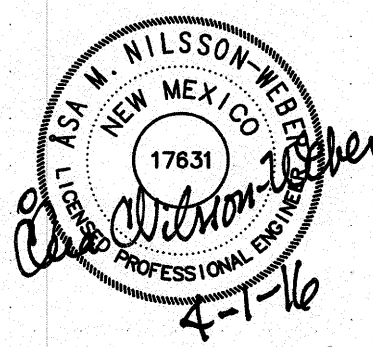
128 Monroe Street N.E.  
Albuquerque, New Mexico 87108  
Ph. 505-268-8828 [www.iacivil.com](http://www.iacivil.com)

2091 CP-101.dwg

Mar 30, 2016

Architect

Engineer



MANZANO HIGH  
SCHOOL  
GYMNASIUM  
LOMAS BLVD  
ALBUQUERQUE, NM

### Key Plan

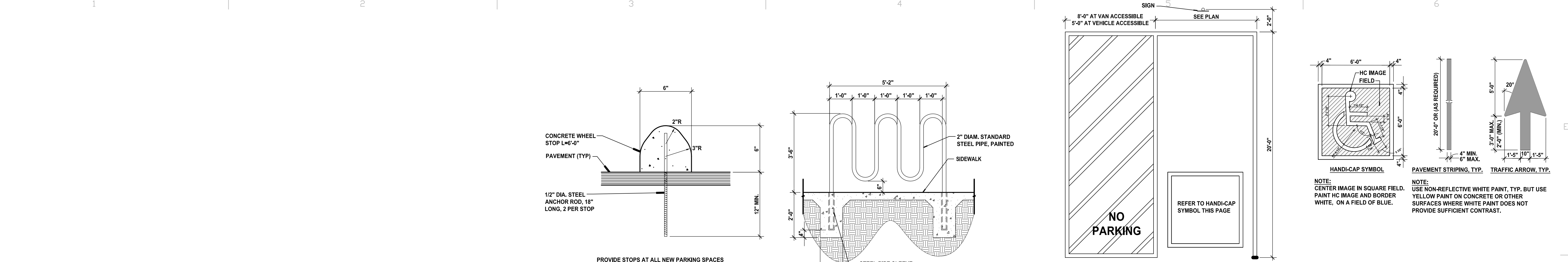
MARK	DATE	DESCRIPTION
ISSUE:	PERMIT	
PROJECT NO:	1401	
CAD DWG FILE:	2091 CP-101.dwg	
DRAWN BY:	JTS	
CHECKED BY:	ANW	
DATE:	APRIL 1, 2016	

### SHEET TITLE

PAVING NOTES AND  
DETAILS

CP-501

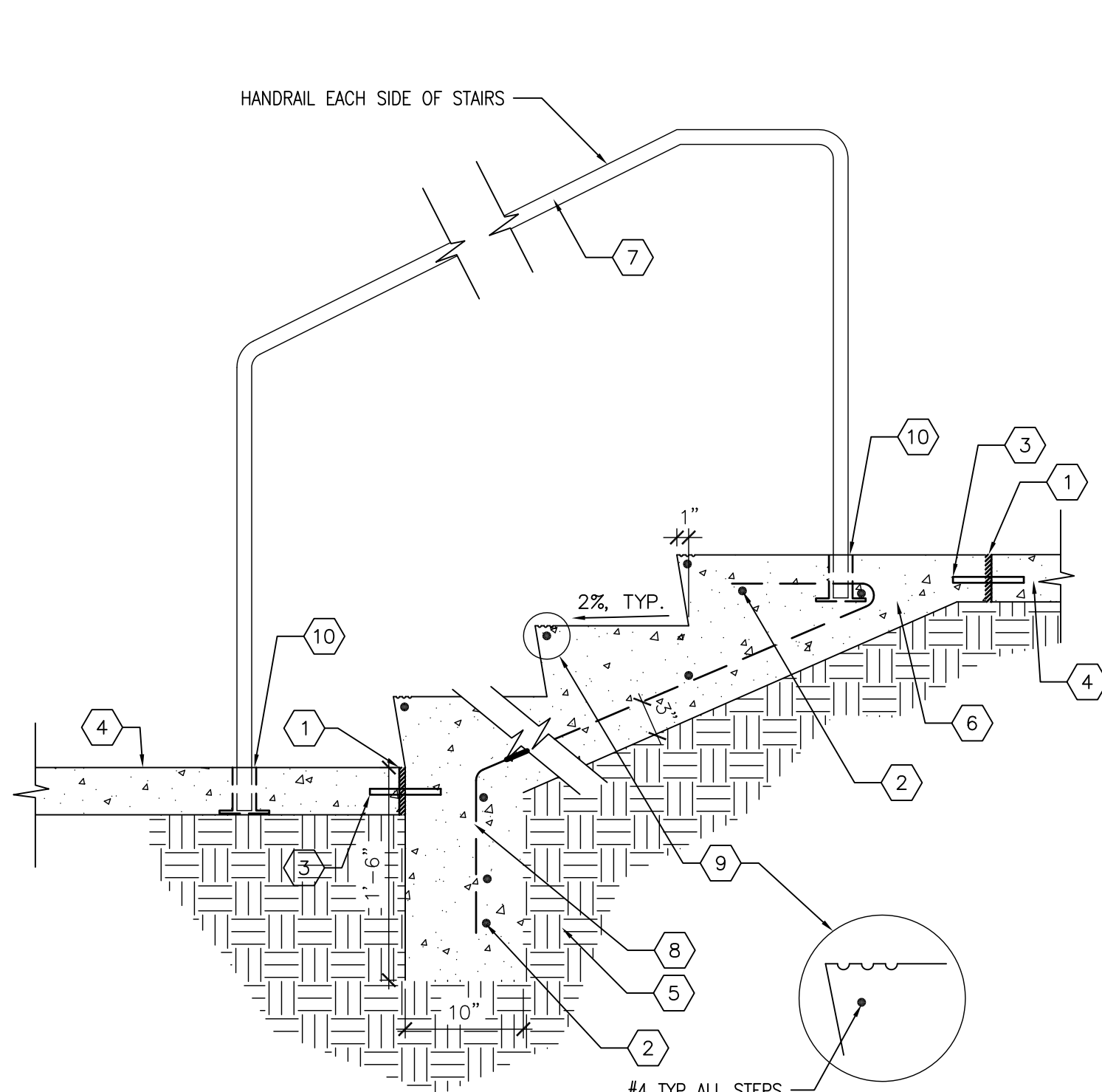




E3 CONCRETE WHEEL STOP  
N.T.S.

E4 BIKE RACK DETAIL  
1/2"=1'-0"

E5 TRAFFIC STRIPING  
SCALE: 1/4"=1'-0"



C3 GUARDRAIL ELEVATION  
SCALE: 1"=1'-0"

C5 HANDRAIL ELEVATION  
SCALE: 1"=1'-0"

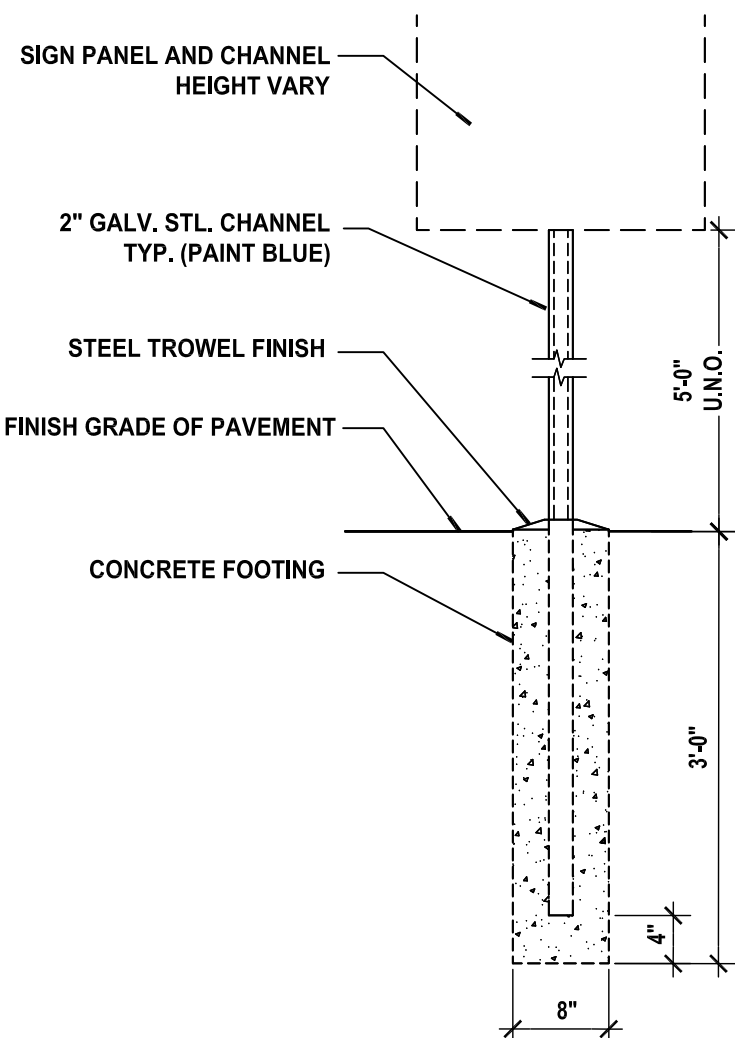
KEYED NOTES

1. EXPANSION JOINT.
2. 2 - #4 REBAR CONT.
3. #4 SMOOTH DOWEL AT 12" O.C.
4. ADJACENT WALK OR AS SHOWN ON PLAN.
5. 95% COMPACTED SUBGRADE.
6. 3000 PSI CONCRETE
7. 1 1/2" DIAMETER STEEL PIPE.
8. #4 REBAR @ 12" O.C. EACH WAY.
9. 1/4" TOOL JOINT, 3 EA. @ NOSE OF THREAD (TYP.) SEE ENLARGEMENT.
10. GROUT VERTICAL SUPPORT INTO 4" RECESSED PIPE SLEEVE WITH NON-SHRINK GROUT.

GENERAL NOTES

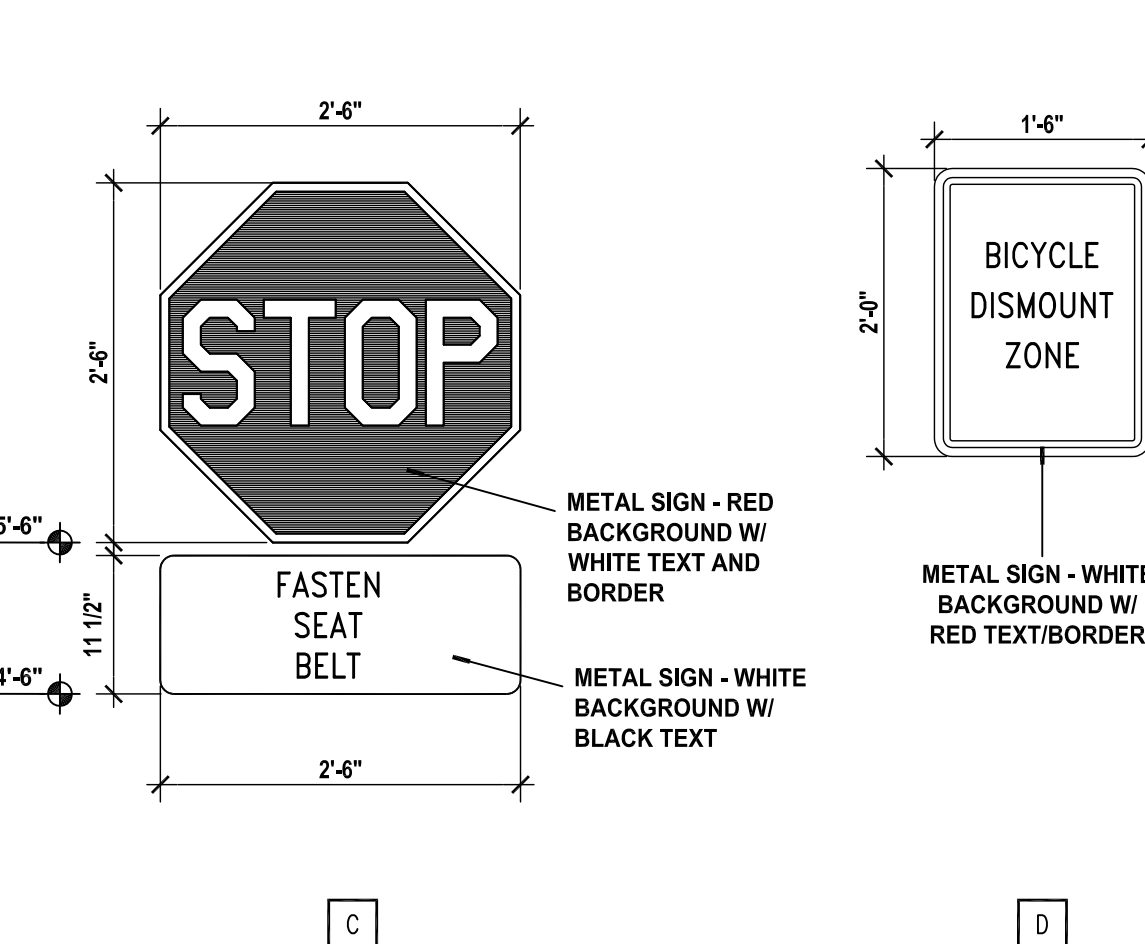
- A. WELD AND GRIND SMOOTH ALL JOINTS. PRIME PIPE COMPLETELY WITH RED OXIDE PRIMER AND FINISH WITH TWO COATS OF EXTERIOR FLAT LATEX PAINT, COLOR TO BE SELECTED BY ARCHITECT.
- B. RISER HEIGHTS ARE TO BE OF EQUAL SPACING.
- C. RAIL SHALL BE 1 1/2" CLEAR FROM ALL VERTICAL SURFACES.
- D. CONTRACTOR SHALL PROVIDE SHOP DRAWINGS FOR REVIEW PRIOR TO FABRICATION.

B1 STAIRS WITH HANDRAIL  
SCALE: 1"=1'-0"

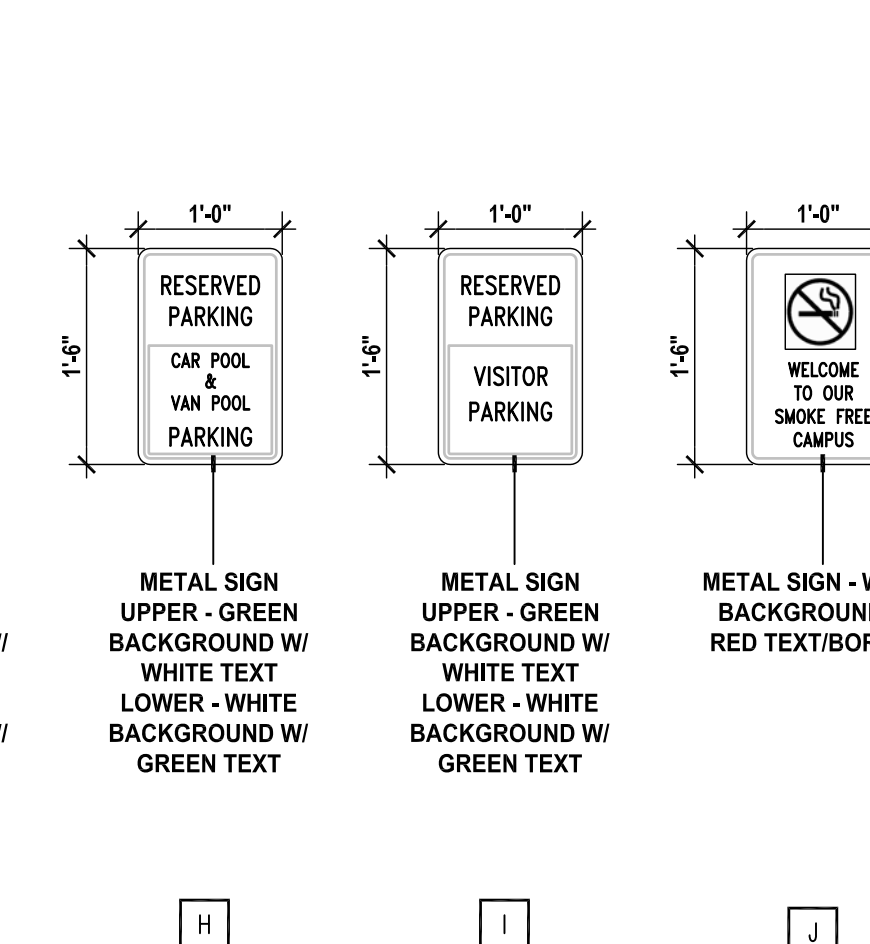


NOTE:  
1. FABRICATE ALL SIGN PANELS OF 1060 ALUMINUM  
2. POST MOUNT: USE NON-CORROSIVE 3/8" MACHINE BOLTS WITH WASHERS, 2 PER SIGN

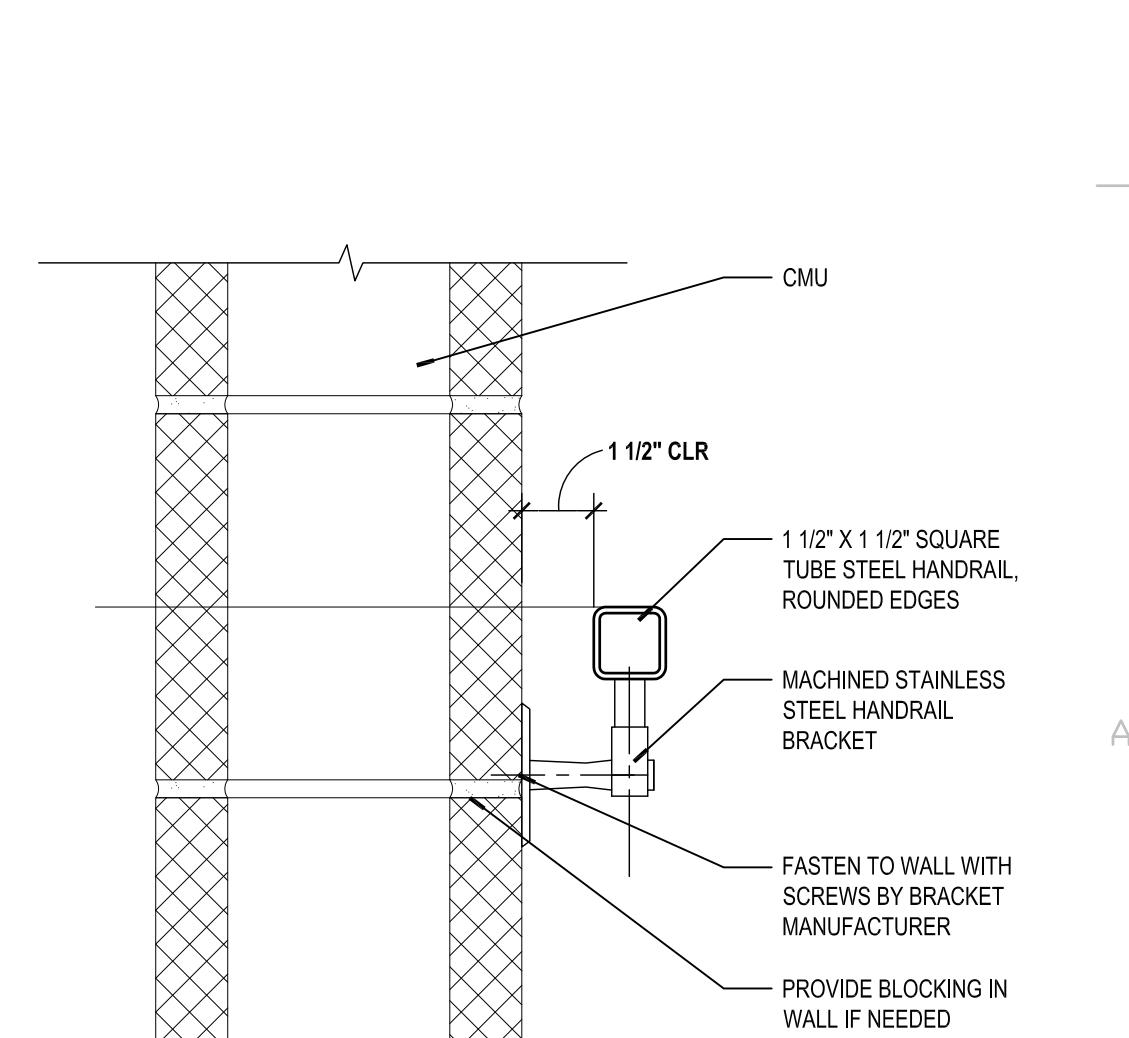
B3 RAMP W/ CURB  
SCALE: 1"=1'-0"



B4 RAMP W/ CURB @ WALL  
SCALE: 1"=1'-0"



B6 RAMP GUARDRAIL - HORIZ SECTI  
SCALE: 1"=1'-0"



A1 SITE SIGNS MOUNTING DETAIL  
SCALE: 3/4"=1'-0"



A2 PARKING/SITE SIGNS ELEVATION TYPES  
SCALE: 3/4"=1'-0"



**STUDIO**  
**SW**  
**ARCHITECTS**

STUDIO SOUTHWEST ARCHITECTS, INC.  
2101 Mountain Rd. NW, Albuquerque, NM 87104  
505.843.9639 fax 505.843.9663  
Web Site: www.studioswarch.com  
E-Mail: mail@studioswarch.com

© 2009, Studio Southwest Architects, Inc.  
Duplication or reproduction by any means without the express written consent of Studio Southwest Architects, Inc. is a violation of Federal and International law. The information contained on this document is the intellectual property of Studio Southwest, Inc. and all rights thereto are Reserved. For exceptions, refer to the Owner-Architect Agreement.

CONSULTANTS

Architect Engineer

RICHARD T. BRAUN  
NO. 1597  
REGISTERED ARCHITECT

MANZANO HIGH SCHOOL  
ATHLETIC COMPLEX

12200 LOMAS BLVD., NE  
ALBUQUERQUE, NM  
87112

Key Plan		
NTS		
MARK	DATE	PERMIT COMMENTS
4/19/2016		PERMIT
ISSUE:	PROJECT NO: 1401	
CAD DWG FILE:	1401AS-501.DWG	
DRAWN BY:	CSC	
CHECKED BY:	RTB	
DATE:	APRIL 1, 2016	

SHEET TITLE

SITE PLAN DETAILS

**AS-501**