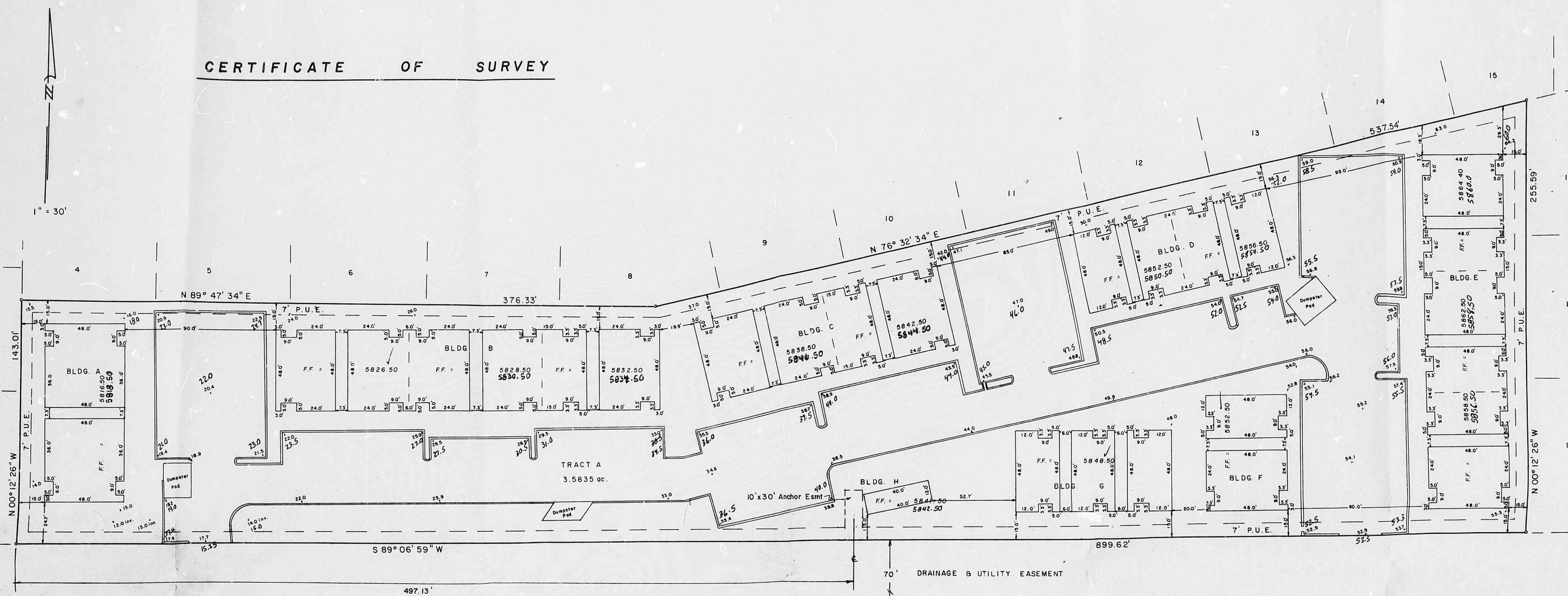


# CERTIFICATE OF SURVEY



COPPER

AVENUE

N.E.

B.M.T.C. 5853.05  
South Curb

## LEGAL DESCRIPTION

Tract "A" in Block numbered Seven (7) of CITY VIEW ESTATES, Unit "C" a Subdivision of the City of Albuquerque, New Mexico, as the same is shown and designated on the corrected and amended plat thereof, filed in the office of the County Clerk of Bernalillo County, New Mexico on the 21st day of May 1973.

## SURVEYOR'S CERTIFICATE

I, Franklin E. Wilson, licensed under the laws of the State of New Mexico, do hereby certify that this plat was prepared by me or under my direction from notes of an actual field survey, that the plat hereon is a true, accurate and correct representation of the improvements as determined by survey, the lines and dimensions of said property being as indicated by the plat, the size, location and type of buildings and structures on the property being shown hereon and being located within the boundaries of the property, the set backs from property lines being the distances indicated; and based upon the plat and documentation provided, there are no encroachments, easements, conflicts, or protrusions, except as shown, noted or described on this survey.

*Franklin E. Wilson*  
Franklin E. Wilson, N.M.L.S. #6446

5/10/82  
Date

PREPARED BY:  
SOUTHWEST SURVEYING CO., INC.  
215 Marble N.W.  
Albuquerque, New Mexico 87102  
247-4444



## SURVEYOR'S NOTE

Tract A in Block 7 of CITY VIEW ESTATES, Unit "C" was originally designated as Tract B-2, Block 7 of the plat of CITY VIEW ESTATES, Unit B, C & D, filed in the office of the County Clerk of Bernalillo County, New Mexico on July 9, 1971.

Amended to show elevations.

9/13/82  
Date

292-5155 Day Lm. 80

T 10 N, R 4 E, Sec. 23

CITY OF ALBUQUERQUE  
THIS MICROIMAGE IS THE BEST  
POSSIBLE REPRODUCTION DUE  
TO THE POOR QUALITY OF THE  
ORIGINAL DOCUMENT

D  
24

C  
20

B  
16

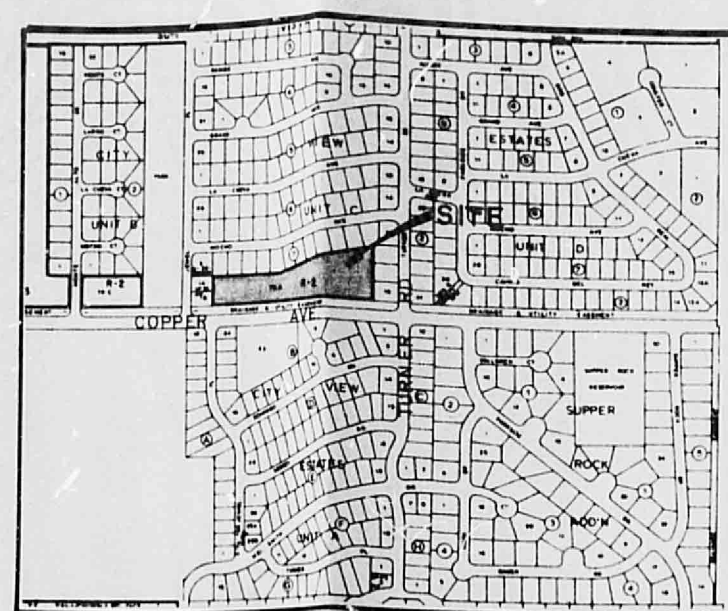
A  
12

CITY OF ALBUQUERQUE

C

D

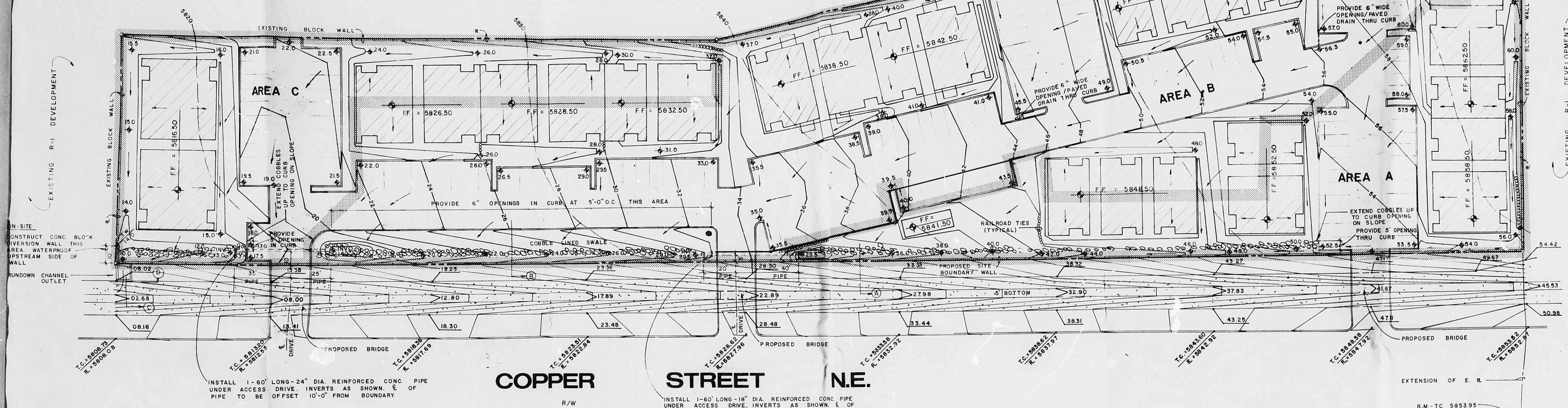
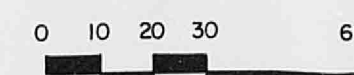




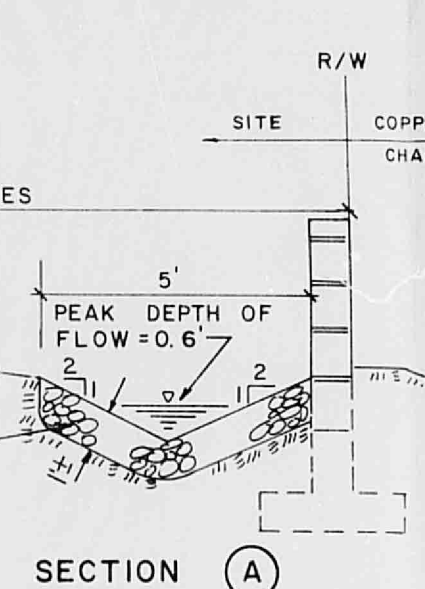
VICINITY MAP - L-23

- LEGEND**
- 12.7 EXISTING SPOT ELEVATION
  - EXISTING CONTOUR (10' INTERVALS)
  - 12.7 PROPOSED SPOT ELEVATION
  - PROPOSED FINISHED CONTOUR
  - SURFACE FLOW DIRECTION
  - DRAINAGE BOUNDARY
  - COBBLE LINED SWALE

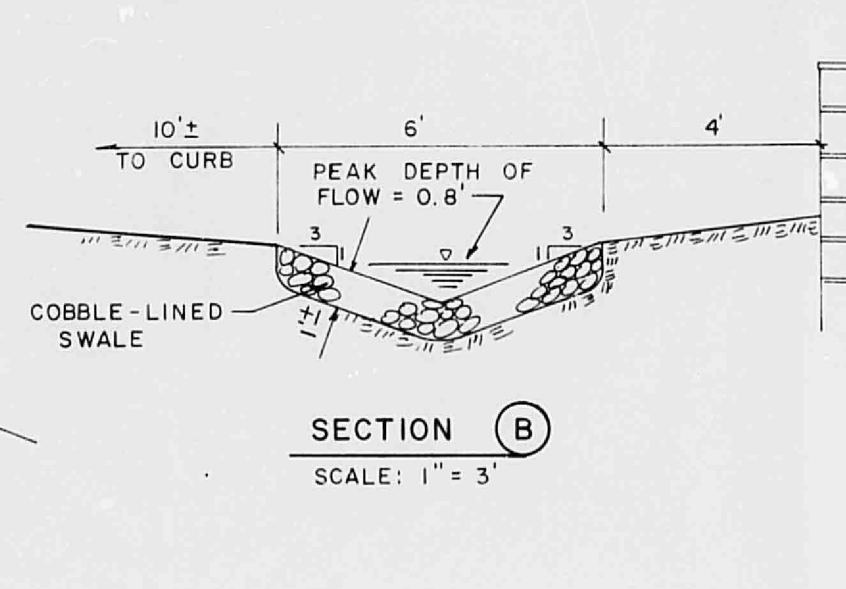
APPROVED FOR DRAINAGE  
9-29-82  
DATE  
30/6/82  
TITLE  
ENGINEER'S SEAL  
THIS REVISION IS  
APPROVED FOR BY  
R-1



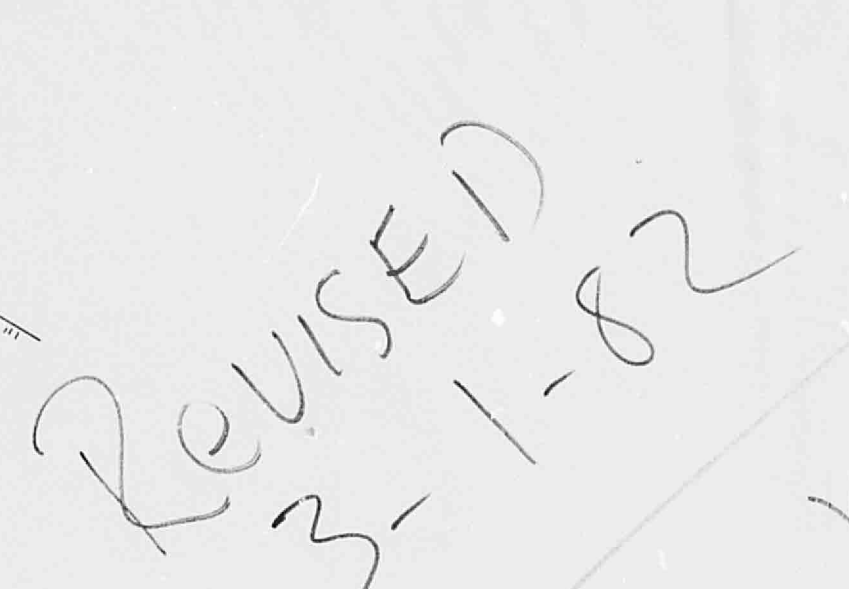
**COPPER STREET N.E.**



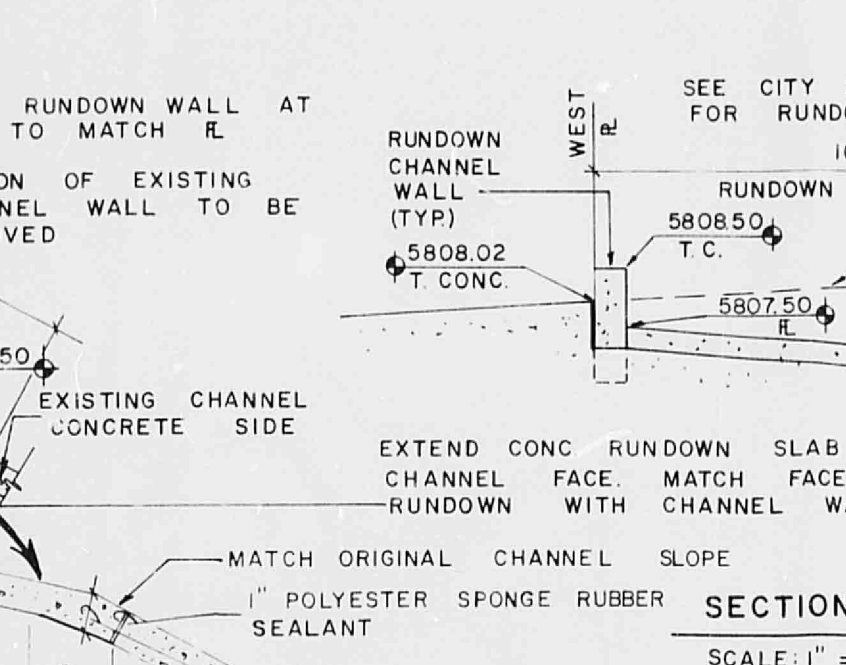
SECTION A  
SCALE: 1" = 3'



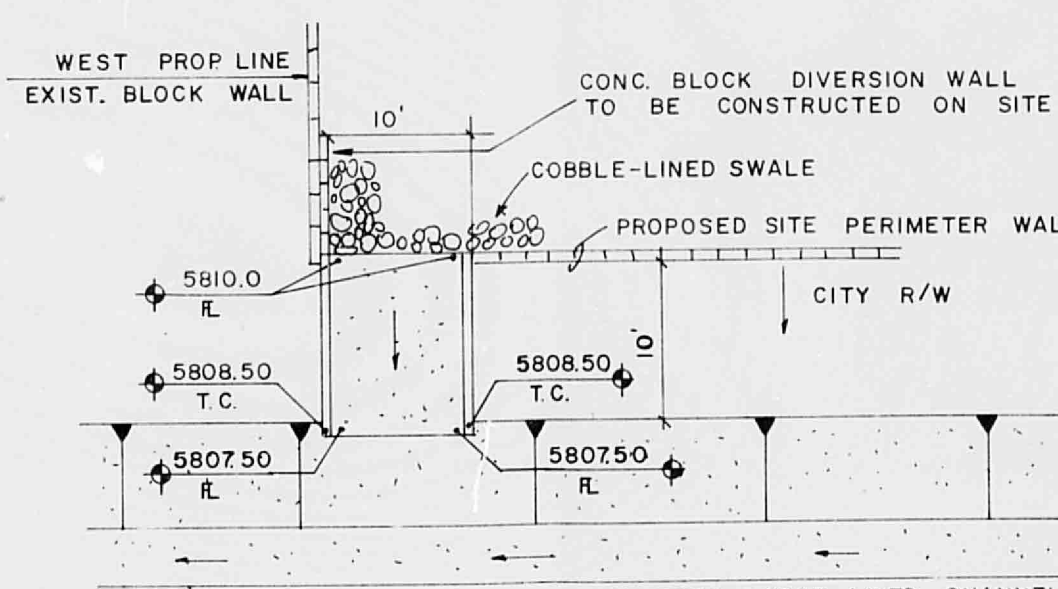
SECTION B  
SCALE: 1" = 3'



SECTION C  
SCALE: 1" = 3'



SECTION D  
SCALE: 1" = 3'



CHANNEL OUTLET PLAN

**GENERAL INFORMATION**  
This revised grading and drainage plan updates the original drainage report prepared in March, 1980, which used inflow/outflow control ponds. At the time of the original report, the City of Albuquerque had not been constructed. In the intervening 1 1/2 years, the channel was completed, but the site was not. Due to the present existence of this channel, the site drainage concept is being revised, and a pre-design meeting with the City Engineers Office 1/5/82, to allow free discharge of the site into the channel.

**CALCULATIONS**  
Area A: Drainage of this area accumulates in a lined swale located along the south side of the site for discharge into Area B through a pipe located under the easel access street.  
Peak Rate:  $Q_{100} = (0.74)(5.4)(0.78 \text{ Ac.}) = 3 \text{ cfs}$   
Pipe Size: 18" dia. 10' long, entrance type - groove end projecting, 18" diameter pipe's capacity = 7 cfs. 3 cfs from Area A, 4 cfs from Area B.  
Capacity of swale:  $Q = 3.1, n = 0.030, s = 0.035, Q = 3 \text{ cfs}$ , depth of flow = 0.6'.

Area B: Drainage of this area accumulates and combines with flow from Area A in a lined swale located along the south side of the site for discharge into Area C through a pipe located under the westerly access street.  
Peak Rate:  $Q_{100} = (0.74)(5.4)(2.96 \text{ Ac.}) = 12 \text{ cfs}$   
Pipe Size: 24" dia. 10' long, entrance type - groove end projecting, 24" diameter pipe's capacity = 14 cfs. 12 cfs from Area A and B, 2 cfs from Area C.  
Capacity of swale:  $Q = 3.1, n = 0.030, s = 0.030, Q = 12 \text{ cfs}$ , depth of flow = 0.9'.

Area C: Drainage of this area combines with flow from Areas A and B for free discharge into the Copper Street Channel.  
Combined A, B, & C Flow:  
 $Q_{100} = (0.74)(5.4)(3.58 \text{ Ac.}) = 14 \text{ cfs}$   
Capacity of swale:  $Q = 3.1, n = 0.035, s = 0.020, Q = 14 \text{ cfs}$ , depth of flow = 0.9'.

**RECOMMENDATIONS**  
1. Construct revised drainage improvements on-site as shown:  
a. Install 1 - 60' long 18" diameter reinforced concrete pipe under middle access drive, at inverts shown.  
b. Install 1 - 60' long 24" diameter reinforced concrete pipe under west access drive, at inverts shown.  
c. Line drainage swale along south side of site with large cobble, to cross sections shown.  
d. Construct concrete block diversion wall adjacent to existing wall at downstream entrance of concrete rundown to channel, as shown.  
e. Construct concrete drainage rundown into existing Copper Street Channel, per Std. City Drawing #K-10.

Special Order #19 Documents to be submitted with plan.



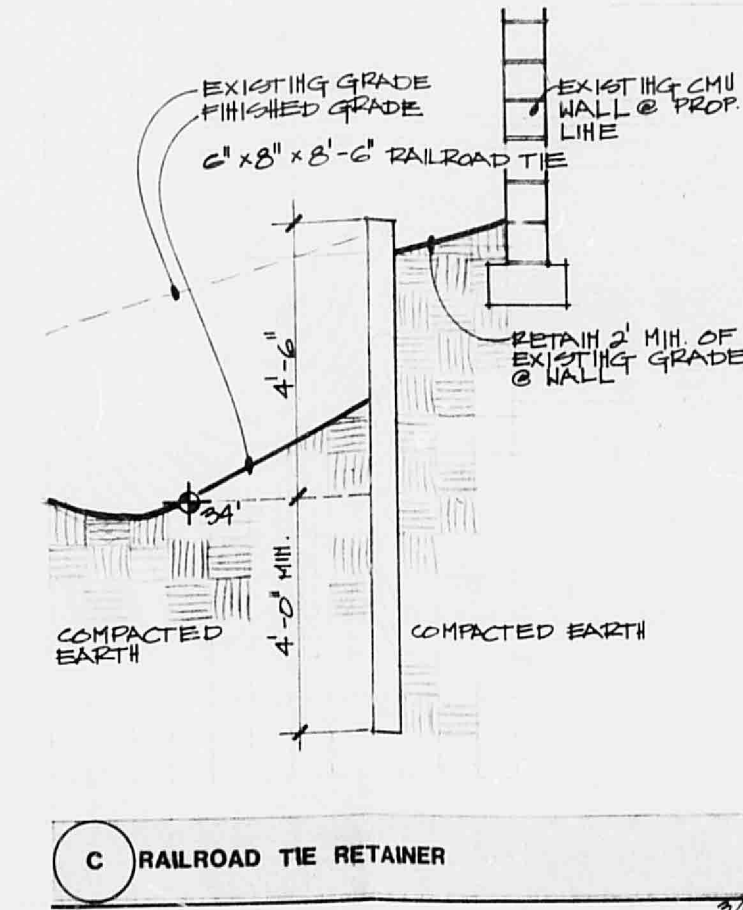
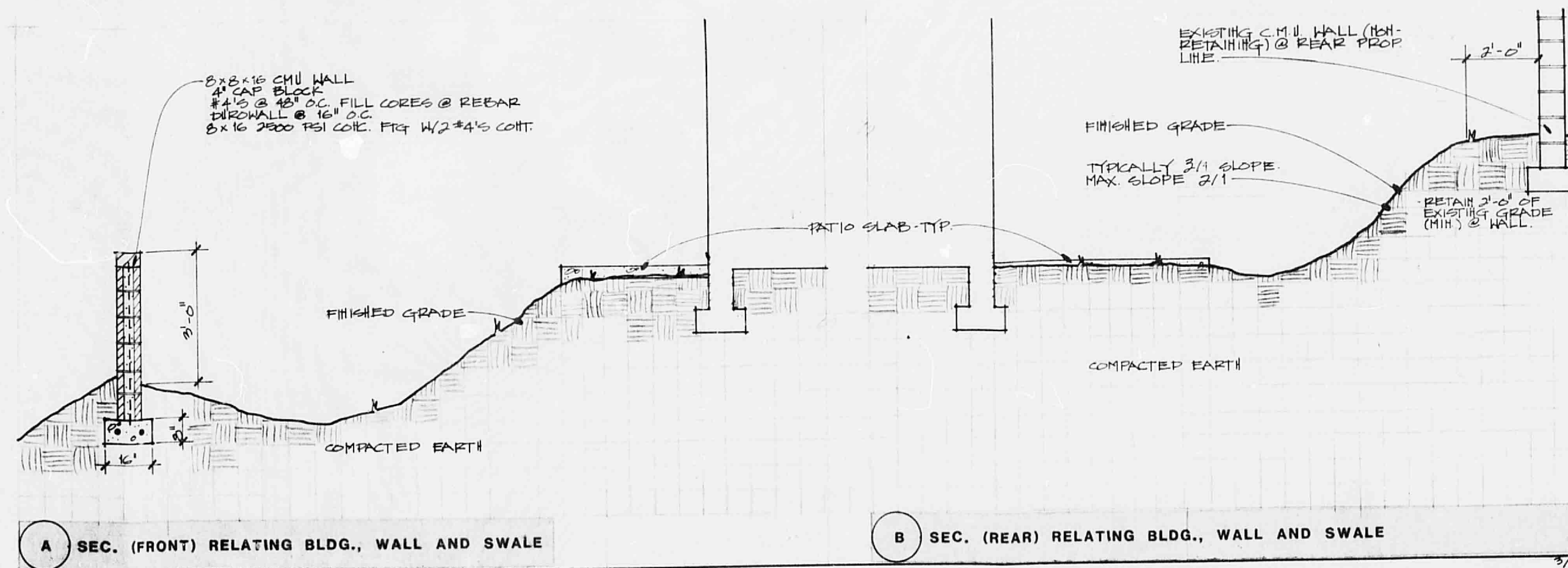
CITY OF ALBUQUERQUE  
THIS MICROFILM IS THE BEST  
POSSIBLE REPRODUCTION DUE  
TO THE POOR QUALITY OF THE  
ORIGINAL DOCUMENT

**GRADING/DRAINAGE PLAN for  
Copper Street Apartments**

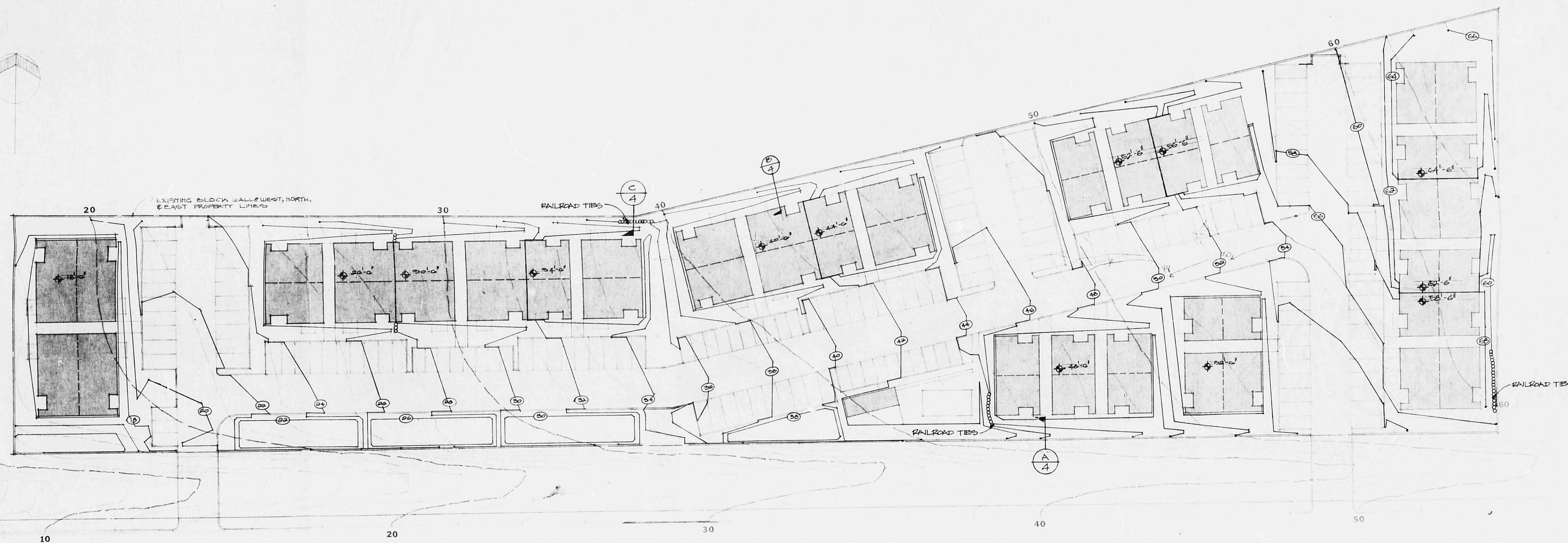
ALBUQUERQUE  
NEW MEXICO

K23-D8A





# NOTES



COPPER NE

GRADING PLAN

14225 COPPER ST. N.E.

<p>STATE OF NEW MEXICO</p> <p>Notary Public</p> <p>James C. Lewis</p> <p>Notary Public</p>	<p>SCHLEGEL AND LEWIS ARCHITECTS</p> <p>14225 COPPER ST. N.E.</p> <p>ALBUQUERQUE, N.M.</p>
<p>RECEIVED</p> <p>NOV 5 0 1982</p>	<p>COPPER ST. APARTMENTS</p> <p>4</p> <p>3/4/80</p> <p>REV 12/15/81</p>

CITY OF ALBUQUERQUE  
THIS MICROFILME IS THE BEST  
POSSIBLE REPRODUCTION DUE  
TO THE POOR QUALITY OF THE  
ORIGINAL DOCUMENT

D  
24

C  
20

B  
16

A  
12

CITY OF ALBUQUERQUE

C

D