



RE 27, DATE 3-27-02, LSP

CITY OF ALBUQUERQUE
This microimage is certified to be a complete and accurate copy of the original as it appears in the files of the Public Works Department and was created in the normal course of business.

The photographic process used meets the Basic Microfilm Standards of the National Micrographics Association (ANSI Z39.48-1997)

Chris J. [Signature]
DIRECTOR

PLAN SHOT TWICE
ONCE ON LIGHT
ONCE ON DARK

CITY OF ALBUQUERQUE
THIS MICROIMAGE IS THE BEST POSSIBLE REPRODUCTION DUE TO THE POOR QUALITY OF THE ORIGINAL DOCUMENT.

Robert Duran
NOTARY PUBLIC
OFFICIAL SEAL
Robert Duran
NOTARY PUBLIC
Albuquerque, NM

PLANS/PLATS ON FILE
FILE DESC: **L9/D21**

PLANS/PLATS **7**



PLAN SHOT TWICE
 ONCE ON LIGHT
 ONCE ON DARK

CITY OF ALBUQUERQUE
 THIS MICROIMAGE IS THE BEST
 POSSIBLE REPRODUCTION DUE
 TO THE POOR QUALITY OF THE
 ORIGINAL DOCUMENT.

R# 27 DATE 3-27-62 OP LRP

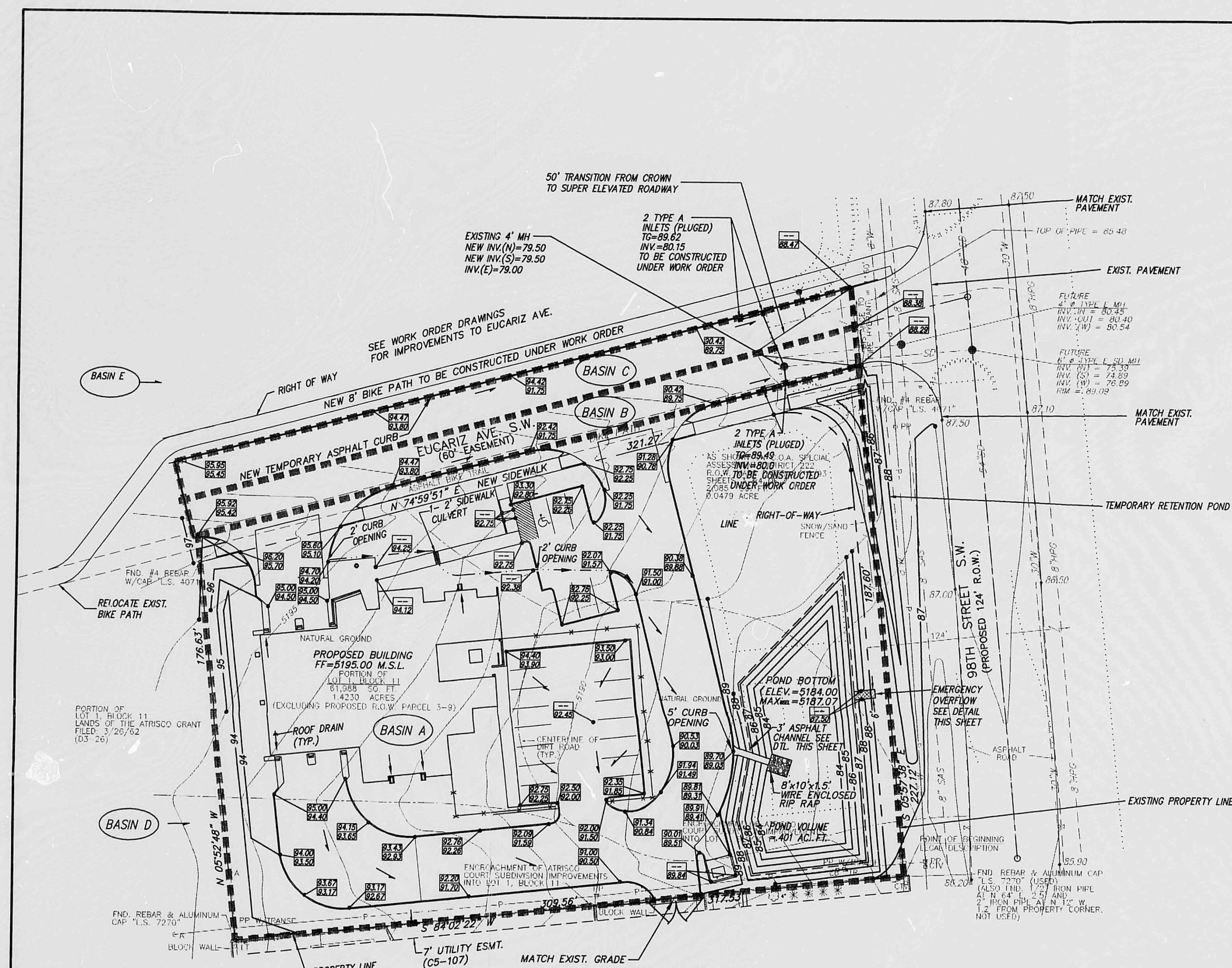
CITY OF ALBUQUERQUE
 This microimage is certified
 to be a complete and accurate
 copy of the original as it
 appears in the files of the
 Public Works Department
 and was created in the normal
 course of business.

The photographic process used
 meets the Basic Microfilm
 Standards of the National
 Micrographics Association
 (MS115-1977)

Chris. Ashury
 DIRECTOR

Robert Dwan
 NOTARY PUBLIC

NOTARIAL SEAL
 Robert Dwan
 Notary Public
 State of New Mexico
 My Comm. Expires 11/15/92



DRAINAGE CALCULATIONS

ZONE=1
 $P_{max}=1.87$
 $P_{min}=2.20$
 $P_{avg}=2.66$
 $D_t=0.033$ HR
 $T_p=0.133$ HR

PROPOSED CONDITION

BASIN A-ENTIRE SITE
 AREA=.002223 SQ. MI.
 TYPE "A"= 08.0%
 TYPE "B"= 10.0%
 TYPE "C"= 12.0%
 TYPE "D"= 70.0%
 $Q_{100}=5.27$ CFS
 $V_{100}=1882$ ACRE FEET

$Q_{curb\ opening}=2.9 \times L \times H^{1.49}=2.9 \times (2) \times (.67)^{1.49}=7.89$ CFS

Emergency overflow capacity= $2.9 \times L \times H^{1.49}=2.9 \times (6) \times (.15)^{1.49}=6.15$ CFS

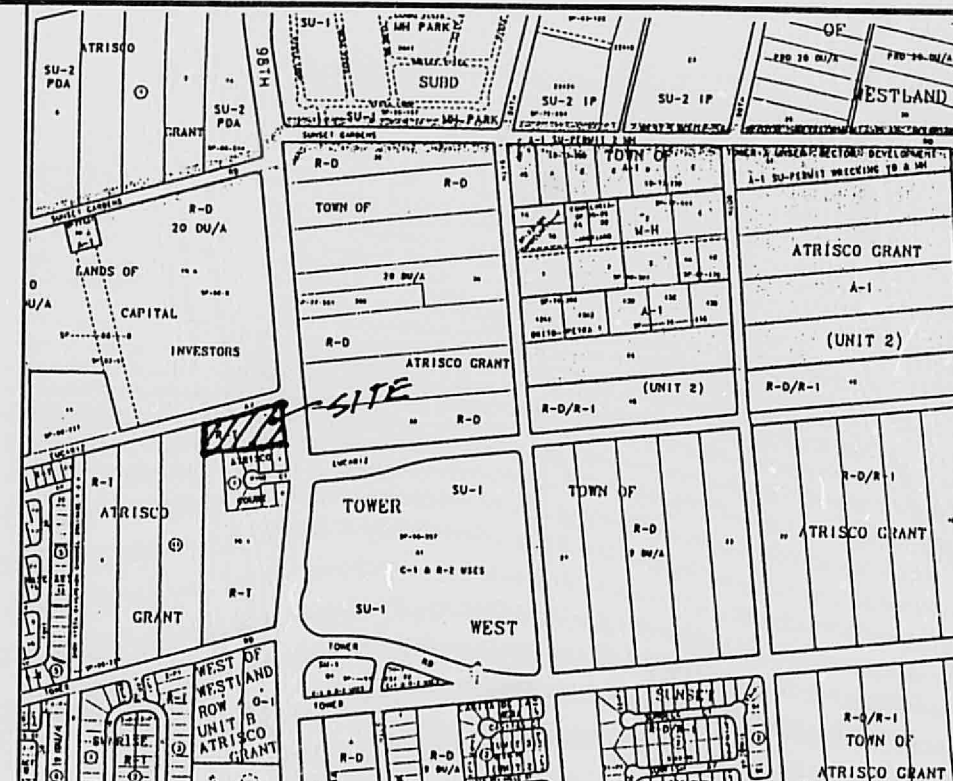
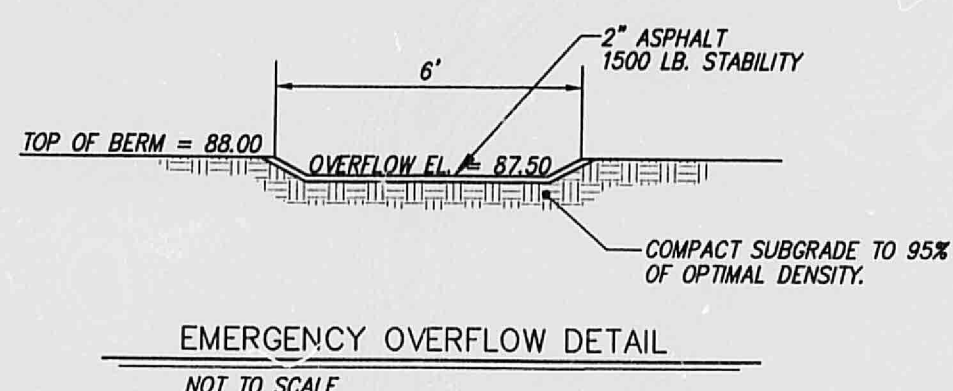
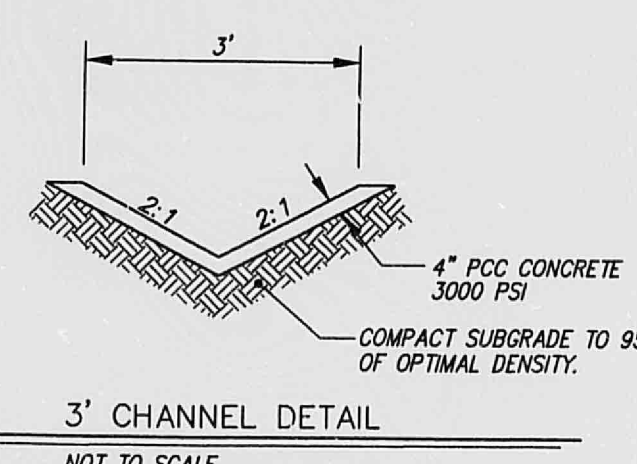
BASIN B & C-IMPROVED PORTION OF EUCARIZ
 AREA=.000390 SQ. MI.
 TYPE "A"= 00.0%
 TYPE "B"= 00.0%
 TYPE "C"= 00.0%
 TYPE "D"= 100.0%
 $Q_{100}=1.10$ CFS
 $V_{100}=.0408$ ACRE FEET
 $V_{100-100} = V_{100} + A_s(P_s - P_{100})/12$
 $=.0408 + 2496(3.67 - 2.2)/12=.071$ ACRE FEET
 $V_{100-100}=.072$ ACRE FEET

BASIN D-UPSTREAM BETWEEN SITE AND SNOW HEIGHTS CHANNEL
 AREA=.00188 SQ. MI.
 TYPE "A"= 100.0%
 TYPE "B"= 00.0%
 TYPE "C"= 00.0%
 TYPE "D"= 00.0%
 $Q_{100}=1.57$ CFS
 $V_{100}=.0440$ ACRE FEET

ONSITE PONDING REQUIREMENTS
 $Q_{100}=.1882 + 0.440=.2322$ ACRE FEET
 $V_{100-100} = V_{100} + A_s(P_s - P_{100})/12$
 $=.2322 + 1.24(3.67 - 2.2)/12=.3841$ ACRE FEET
 $V_{100-100}=.401$ ACRE FEET

BASIN E-FLOWS IMPACTING EUCARIZ
 $Q_{100-100}=.34$ CFS (AS DEFINED WITHIN THE TOWER/SAGE DRAINAGE MASTER PLAN)
 $Q_{100-100}=.339$ CFS

THIS EXISTING SITE IS UNDEVELOPED. THE PROPOSED IMPROVEMENTS WILL FACILITATE THE USAGE OF THE SITE AS A FIRE STATION. THIS SITE IS LOCATED WITHIN THE TOWER/SAGE MASTER DRAINAGE PLAN. THE SITE IS BOUND ON THE EAST BY 98TH STREET WHICH IS PART OF THE ANTICIPATED SAD222. THE SITE DRAINAGE PLAN CONFORMS TO MASTER DRAINAGE PLAN AND INCORPORATES THE ANTICIPATED IMPROVEMENT OF THE SAD222. ONCE THE SAD IMPROVEMENTS OCCUR, THE RETENTION POND WILL BE MODIFIED TO A SMALLER DETENTION POND WITH A CONTROLLED DISCHARGE. DUE TO THE FUNCTION OF THE SITE AS A FIRE STATION, A FULL PAVEMENT SECTION ON EUCARIZ IS REQUIRED. THE FULL PAVEMENT HAS THE CAPACITY TO CONVEY 40 CM AND THE APPROPRIATE INLETS AND STORM DRAIN PIPE WILL BE CONSTRUCTED FOR THE FULL SECTION. THE INTERIM CONDITION REQUIRES THE COVERING OF THESE INLETS AND RETAINING THE FLOW GENERATED FROM THE IMPROVEMENTS TO EUCARIZ WITHIN THE 98TH STREET FUTURE RIGHT OF WAY.



ASC BENCHMARK

THE STATION IS LOCATED 5 MILES WEST OF DOWNTOWN ALBUQUERQUE, ON THE 98TH STREET, OVERPASS AT U.S. INTERSTATE HIGHWAY 40 (I-40).
 TO REACH THE STATION FROM THE INTERSECTION OF STATE ROAD 448 (COORS RD., N) AND CENTRAL AVE., GO WEST ON CENTRAL AVE., 1.9 MILE TO 98TH STREET, THEN GO NORTH ON 98TH STREET, 0.90 MILE TO THE SOUTH END OF BRIDGE CROSSING I-40, AND THE STATION ON THE LEFT.
 STATION MARK IS A STANDARD NMHC BRASS TABLET, STAMPED "1-40-228", SET 0.5' BELOW THE PAVEMENT.
 $X=351650.01$ $Y=1486656.52$ ELEVATION=5299.42

LEGAL DESCRIPTION

PORTION OF LOT 1, BLOCK 11 LANDS OF THE ATRISCO GRANT ALBUQUERQUE, BERNALILLO COUNTY, NEW MEXICO.

LEGEND

- PROPOSED TOP OF CURB AND FLOW LINE SPOT ELEVATION
- PROPERTY LINE
- PROPOSED CURB
- EXISTING CURB
- FUTURE CURB
- PROPOSED CONTOUR
- EXISTING CONTOUR
- FF=5194.25 M.S.L. FINISH FLOOR ELEVATION
- PROPOSED FLOW ARROW
- DRAINAGE BASIN BOUNDARY

NOTES

- SITE DOES NOT LIE IN A 100 YR. FLOOD ZONE.
- CONTRACTOR MUST OBTAIN A TOPSOIL DISTURBANCE PERMIT FROM THE ENVIRONMENTAL HEALTH DIVISION PRIOR TO CONSTRUCTION.
- CITY OF ALBUQUERQUE STANDARD SPECIFICATIONS FOR PUBLIC WORKS CONSTRUCTION, LATEST EDITION SHALL GOVERN ALL WORK.
- THE CONTRACTOR SHALL CONFORM TO ALL CITY, COUNTY, STATE AND FEDERAL DUST CONTROL MEASURES AND REQUIREMENTS AND WILL BE RESPONSIBLE FOR PREPARING AND OBTAINING ALL NECESSARY APPLICATIONS AND APPROVALS.
- THE CONTRACTOR SHALL ENSURE THAT NO SOIL ERODES FROM THE LOTS INTO PUBLIC RIGHT-OF-WAY. THIS CAN BE ACHIEVED BY CONSTRUCTION TEMPORARY BERMS AND METTING THE SOIL TO KEEP IT FROM BLOWING.
- CONTRACTOR TO REMOVE ALL ASPHALT, CURB & GUTTER, INLETS, DRAINLINE, GAS SERVICE LINE, CONCRETE BASES, AND FENCING WITHIN THE PROPERTY LINES BEFORE GRADING THE SITE.
- COORDINATE LOCATION OF OVERFLOW WITH TREES (ON SHEET 1).
- STORM DRAIN AND STREET IMPROVEMENTS FOR INFORMATION ONLY SEE WORK ORDER DRAWINGS FOR DETAIL.
- ALL WORK WITHIN RIGHT OF WAY TO BE CONSTRUCTED BY WORK ORDER PLANS.

FIRE STATION NO. 14 GRADING AND DRAINAGE PLAN

dmj MARK GOODWIN & ASSOCIATES, P.A.
 CONSULTING ENGINEERS
 P.O. BOX 90606
 ALBUQUERQUE, NEW MEXICO 87199
 (505)828-2200, FAX (505)797-9539

Designed: DPS Drawn: WLV, BLN Checked: DMG
 Scale: 1" = 30' Date: 4-28-99 Job: 97061 Sheet 2 of 2

CITY OF ALBUQUERQUE
 THIS MICROIMAGE IS THE BEST POSSIBLE REPRODUCTION DUE TO THE POOR QUALITY OF THE ORIGINAL DOCUMENT.

R# 27 DATE 3-27-02 OF EDP

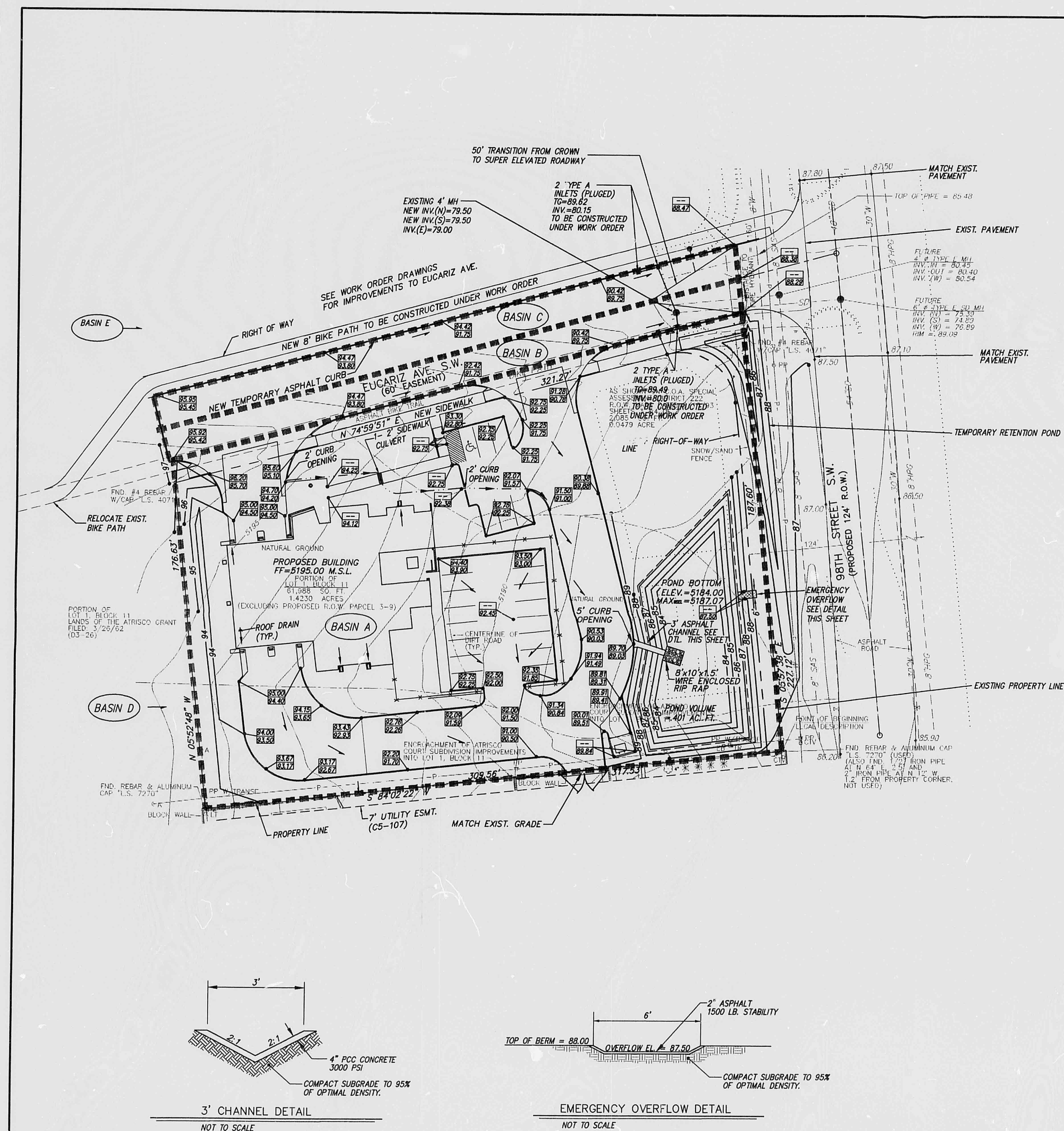
CITY OF ALBUQUERQUE
 This microimage is certified to be a complete and accurate copy of the original as it appears in the files of the Public Works Department and was created in the normal course of business.

The photographic process used meets the Basic Microfilm Standards of the National Micrographics Association (MS115-1977)

Chris. Kelly 11/15/02
 DIRECTOR

Roberto Duran
 NOTARY PUBLIC

OFFICIAL SEAL
 Roberto Duran
 NOTARY PUBLIC
 STATE OF NEW MEXICO
 My Comm. Expires 11/15/02



Drainage Calculations

ZONE=1
 $P_{100}=1.87$
 $P_{100}=2.20$
 $P_{100}=2.66$
 $D_t=0.033$ HR
 $T_r=0.133$ HR

Proposed Condition

Basin A-Entire Site
 AREA=0.00390 SQ. MI.
 TYPE "A" = 0.00%
 TYPE "B" = 0.00%
 TYPE "C" = 0.00%
 TYPE "D" = 100.0%
 $Q_{100} = 5.27$ CFS
 $V_{100} = .1882$ ACRE FEET

$Q_{curb\ opening} = 2.9L^{1.49}H^{1.49} = 2.9(2)(.67)^{1.49} = 7.89$ CFS

Emergency overflow capacity = $2.9L^{1.49}H^{1.49} = 2.9(6)(5)^{1.49} = 6.15$ CFS

Basin B & C-Improved Portion of Eucariz
 AREA=0.00390 SQ. MI.
 TYPE "A" = 0.00%
 TYPE "B" = 0.00%
 TYPE "C" = 0.00%
 TYPE "D" = 100.0%
 $Q_{100} = 1.10$ CFS
 $V_{100-100} = V_{100} + A_0(P_{100} - P_{100})/12$
 $= .0408 + 2496(3.67 - 2.2)/12 = .071$ ACRE FEET
 $V_{100-100} = .072$ ACRE FEET

Basin D-Upstream Between Site and Snow Heights Channel
 AREA=0.00390 SQ. MI.
 TYPE "A" = 100.0%
 TYPE "B" = 0.00%
 TYPE "C" = 0.00%
 TYPE "D" = 0.00%
 $Q_{100} = 1.57$ CFS
 $V_{100} = .0440$ ACRE FEET

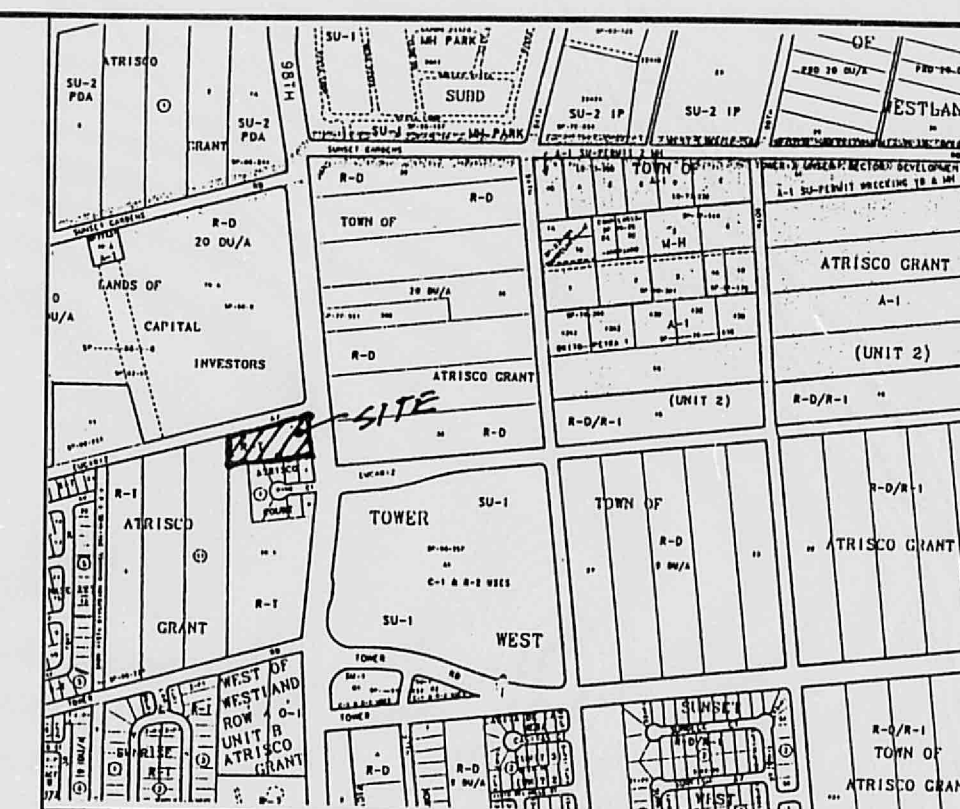
Onsite Ponding Requirements

$Q_{100} = .1882 + .0440 = .2322$ ACRE FEET
 $V_{100-100} = V_{100} + A_0(P_{100} - P_{100})/12$
 $= .2322 + 1.24(3.67 - 2.2)/12 = .3841$ ACRE FEET
 $V_{100-100} = .401$ ACRE FEET

Basin E-Flows Impacting Eucariz

$Q_{curb\ opening} = 34$ CFS (AS DEFINED WITHIN THE TOWER/SAGE DRAINAGE MASTER PLAN)
 $Q_{curb\ opening} = 8.39$ CFS

THIS EXISTING SITE IS UNDEVELOPED. THE PROPOSED IMPROVEMENTS WILL FACILITATE THE USAGE OF THE SITE AS A FIRE STATION. THIS SITE IS LOCATED WITHIN THE TOWER/SAGE MASTER DRAINAGE PLAN. THE SITE IS BOUND ON THE EAST BY 98TH STREET WHICH IS PART OF THE ANTICIPATED IMPROVEMENT OF THE SADD22. THE SITE DRAINAGE PLAN CONFORMS TO THE MASTER DRAINAGE PLAN AND INCORPORATES THE ANTICIPATED IMPROVEMENT OF THE SADD22. ONCE THE SADD IMPROVEMENTS OCCUR, THE RETENTION POND WILL BE MODIFIED TO A SMALLER DETENTION POND WITH A CONTROLLED DISCHARGE. DUE TO THE FUNCTION OF THE SITE AS A FIRE STATION, A FULL PAVEMENT SECTION ON EUCARIZ IS REQUIRED. THE FULL PAVEMENT HAS THE CAPACITY TO CONVEY 40 CFS AND THE APPROPRIATE INLETS AND STORM DRAIN PIPE WILL BE CONSTRUCTED FOR THE FULL SECTION. THE INTERIM CONDITION REQUIRES THE COVERING OF THESE INLETS AND RETAINING THE FLOW GENERATED FROM THE IMPROVEMENTS TO EUCARIZ WITHIN THE 98TH STREET FUTURE RIGHT OF WAY.



Vicinity Map

ASC Benchmark

THE STATION IS LOCATED 5 MILES WEST OF DOWNTOWN ALBUQUERQUE, ON THE 98TH STREET, OVERPASS AT U.S. INTERSTATE HIGHWAY 40 (I-40).

TO REACH THE STATION FROM THE INTERSECTION OF STATE ROAD 448, (CORSOS RD., N) AND CENTRAL AVE., GO WEST ON CENTRAL AVE., 1.9 MILE TO 98TH STREET, THEN GO NORTH ON 98TH STREET, 0.90 MILE TO THE SOUTH END OF BRIDGE CROSSING I-40, AND THE STATION ON THE LEFT.

STATION MARK IS A STANDARD NMHC BRASS TABLET, STAMPED "1-40-228", SET 0.5' BELOW THE PAVEMENT.

X=351650.01 Y=1486656.52 ELEVATION=5289.42

Legal Description

PORTION OF LOT 1, BLOCK 11 LANDS OF THE ATRISCO GRANT ALBUQUERQUE, BERNALILLO COUNTY, NEW MEXICO.

Legend

- PROPOSED TOP OF CURB AND FLOW LINE SPOT ELEVATION
- PROPERTY LINE
- PROPOSED CURB
- EXISTING CURB
- FUTURE CURB
- PROPOSED CONTOUR
- EXISTING CONTOUR
- FF=5194.25 M.S.L. FINISH FLOOR ELEVATION
- PROPOSED FLOW ARROW
- DRAINAGE BASIN BOUNDARY

Notes

1. SITE DOES NOT LIE IN A 100 YR. FLOOD ZONE.
2. CONTRACTOR MUST OBTAIN A TOPSOIL DISTURBANCE PERMIT FROM THE ENVIRONMENTAL HEALTH DIVISION PRIOR TO CONSTRUCTION.
3. CITY OF ALBUQUERQUE STANDARD SPECIFICATIONS FOR PUBLIC WORKS CONSTRUCTION, LATEST EDITION SHALL GOVERN ALL WORK.
4. THE CONTRACTOR SHALL CONFORM TO ALL CITY, COUNTY, STATE AND FEDERAL DUST CONTROL MEASURES AND REQUIREMENTS AND WILL BE RESPONSIBLE FOR PREPARING AND OBTAINING ALL NECESSARY APPLICATIONS AND APPROVALS.
5. THE CONTRACTOR SHALL ENSURE THAT NO SOIL ERODES FROM THE LOTS INTO PUBLIC RIGHT-OF-WAY. THIS CAN BE ACHIEVED BY CONSTRUCTION TEMPORARY BERMS AND NETTING THE SOIL TO KEEP IT FROM BLOWING.
6. CONTRACTOR TO REMOVE ALL ASPHALT, CURB & GUTTER, INLETS, DRAINAGE, GAS SERVICE LINE, CONCRETE BASES, AND FENCING WITHIN THE PROPERTY LINES BEFORE GRADING THE SITE.
7. COORDINATE LOCATION OF OVERFLOW WITH TREES (ON SHEET 1).
8. STORM DRAIN AND STREET IMPROVEMENTS FOR INFORMATION ONLY SEE WORK ORDER DRAWINGS FOR DETAIL.
9. ALL WORK WITHIN RIGHT OF WAY TO BE CONSTRUCTED BY WORK ORDER PLANS.

Fire Station No. 14 Grading and Drainage Plan

MARK GOODWIN & ASSOCIATES, P.A.
 CONSULTING ENGINEERS
 P.O. BOX 90606
 ALBUQUERQUE, NEW MEXICO 87199
 (505)828-2200, FAX (505)797-9539

Designed: DPS Drawn: M.V. BLN Checked: DMG
 Scale: 1" = 30' Date: 4-28-98 Job: 97061 Sheet 2 of 2

CITY OF ALBUQUERQUE
 THIS MICROIMAGE IS THE BEST POSSIBLE REPRODUCTION DUE TO THE POOR QUALITY OF THE ORIGINAL DOCUMENT.

DATE: 3-27-02 BY: EGP

CITY OF ALBUQUERQUE

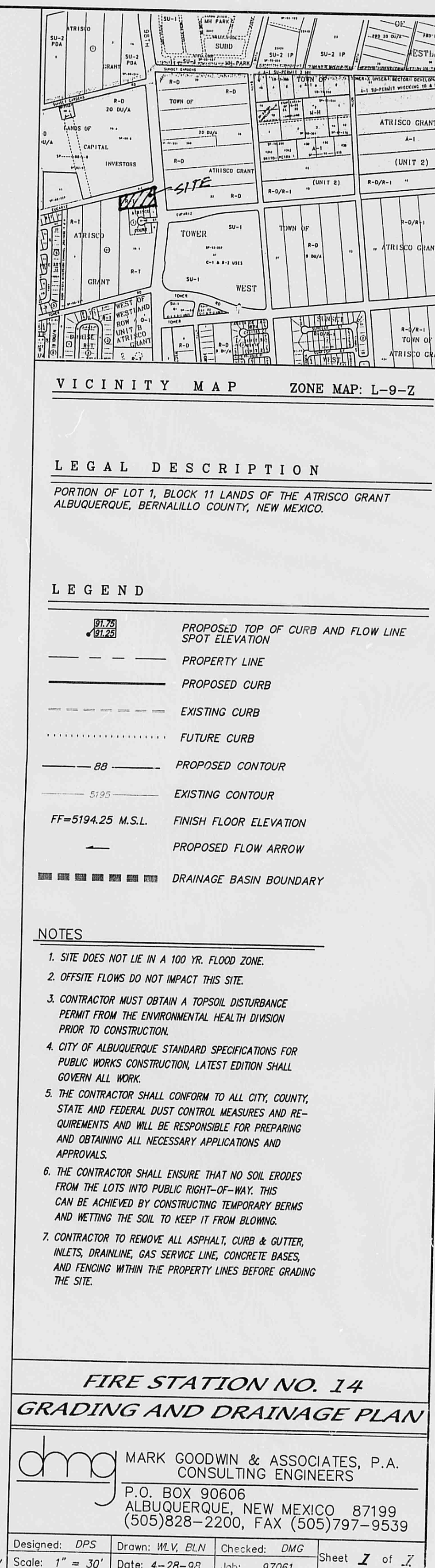
This microimage is certified to be a complete and accurate copy of the original as it appears in the files of the Public Works Department and was created in the normal course of business.

The photographic process used meets the Basic Microfilm Standards of the National Micrographics Association (MS115-1977)

DIRECTOR

NOTARY PUBLIC

OFFICIAL SEAL
 Roberta Duran
 STATE OF NEW MEXICO
 4/16/02



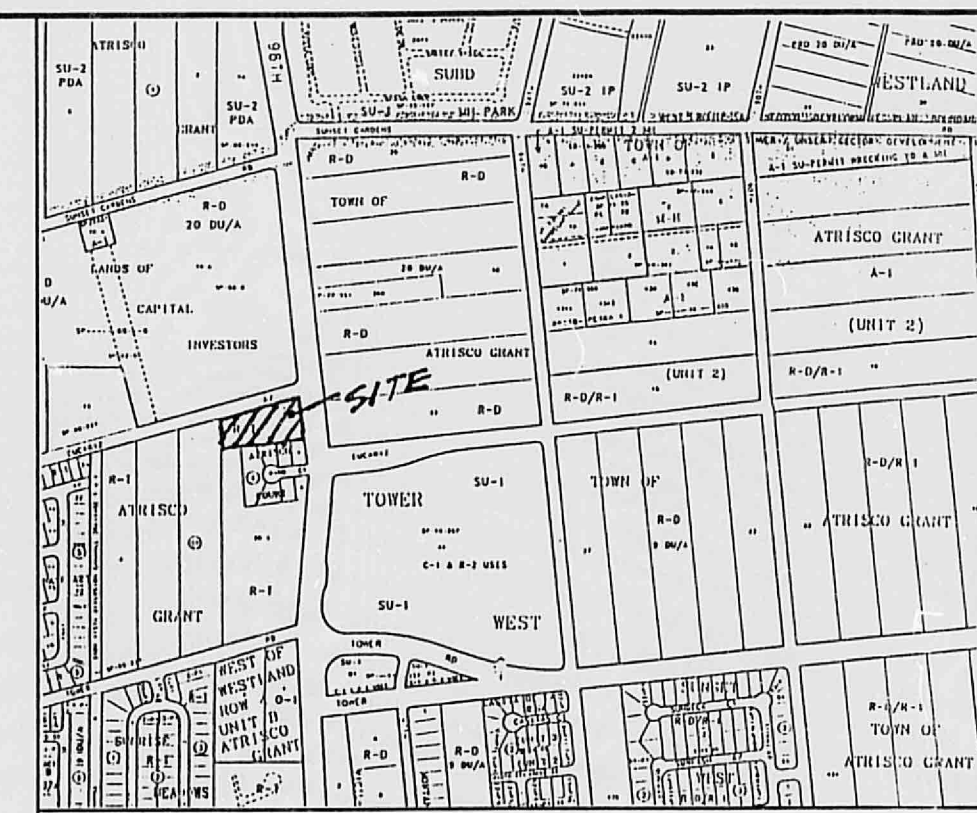
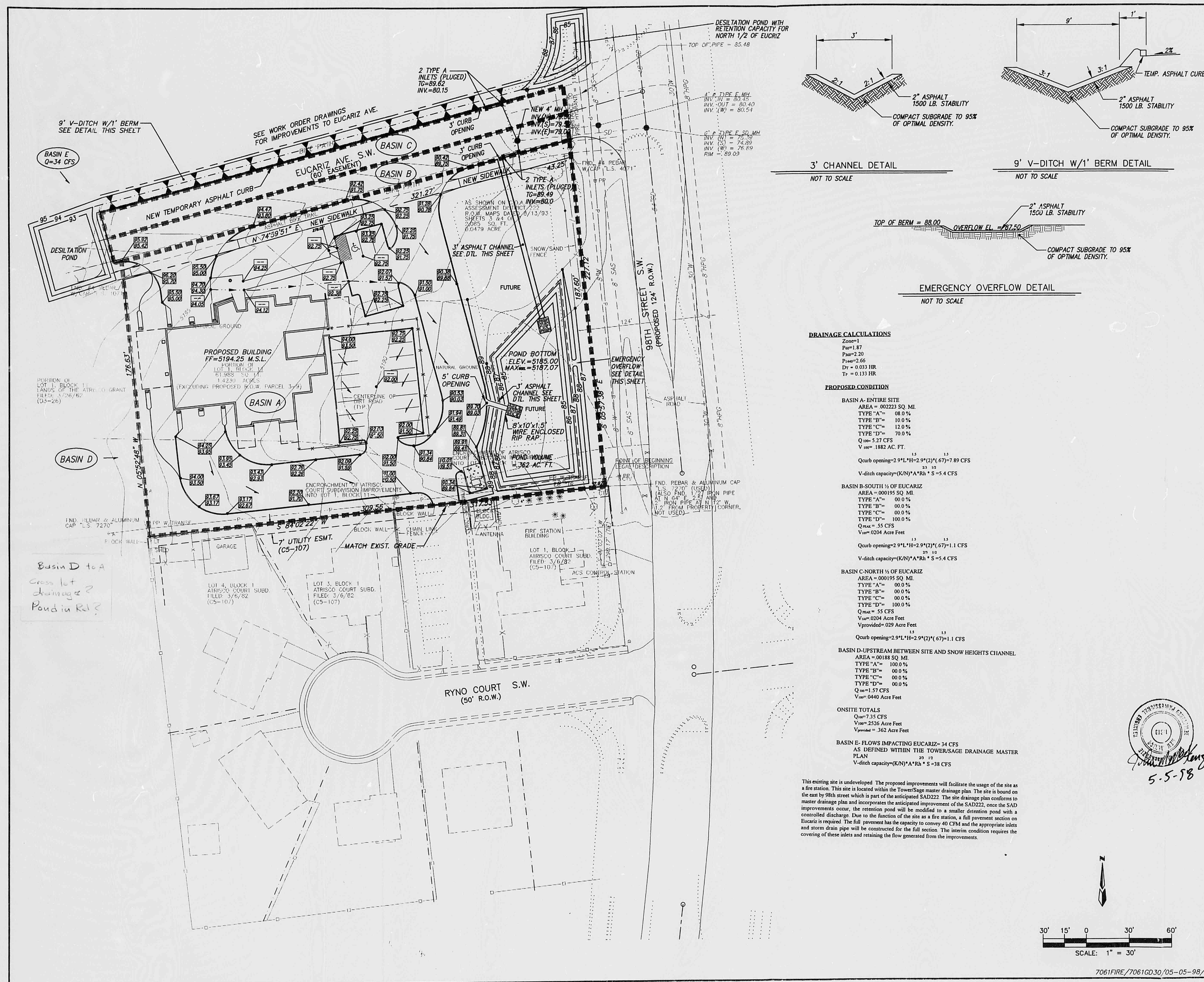
RE 27 DATE 3-27-02 EPD
 CITY OF ALBUQUERQUE
 This microfilm is certified to be a complete and accurate copy of the original as it appears in the files of the Public Works Department and was created in the normal course of business.
 The photographic process used meets the Basic Microfilm Standards of the National Micrographics Association (MS115-1977)

 DIRECTOR

Roberta Duran

 NOTARY PUBLIC

OFFICIAL SEAL
 Roberta Duran
 NOTARY PUBLIC
 STATE OF TEXAS
 06/02/12



LEGAL DESCRIPTION

PORTION OF LOT 1, BLOCK 11 LANDS OF THE ATISCO GRANT ALBUQUERQUE, BERNALILLO COUNTY, NEW MEXICO.

LEGEND

- PROPOSED TOP OF CURB AND FLOW LINE SPOT ELEVATION
- PROPERTY LINE
- PROPOSED CURB
- EXISTING CURB
- FUTURE CURB
- PROPOSED CONTOUR
- EXISTING CONTOUR
- FF=5194.25 M.S.L. FINISH FLOOR ELEVATION
- PROPOSED FLOW ARROW
- DRAINAGE BASIN BOUNDARY

NOTES

1. SITE DOES NOT LIE IN A 100 YR. FLOOD ZONE.
2. OFFSITE FLOWS DO NOT IMPACT THIS SITE.
3. CONTRACTOR MUST OBTAIN A TOPSOIL DISTURBANCE PERMIT FROM THE ENVIRONMENTAL HEALTH DIVISION PRIOR TO CONSTRUCTION.
4. CITY OF ALBUQUERQUE STANDARD SPECIFICATIONS FOR PUBLIC WORKS CONSTRUCTION, LATEST EDITION SHALL GOVERN ALL WORK.
5. THE CONTRACTOR SHALL CONFORM TO ALL CITY, COUNTY, STATE AND FEDERAL DUST CONTROL MEASURES AND REQUIREMENTS AND WILL BE RESPONSIBLE FOR PREPARING AND OBTAINING ALL NECESSARY APPLICATIONS AND APPROVALS.
6. THE CONTRACTOR SHALL ENSURE THAT NO SOIL ERODES FROM THE LOTS INTO PUBLIC RIGHT-OF-WAY. THIS CAN BE ACHIEVED BY CONSTRUCTING TEMPORARY BERMS AND METTING THE SOIL TO KEEP IT FROM BLOWING.
7. CONTRACTOR TO REMOVE ALL ASPHALT, CURB & GUTTER, INLETS, DRAINAGE, GAS SERVICE LINE, CONCRETE BASES, AND FENCING WITHIN THE PROPERTY LINES BEFORE GRADING THE SITE.

FIRE STATION NO. 14

GRADING AND DRAINAGE PLAN

dmg MARK GOODWIN & ASSOCIATES, P.A.
CONSULTING ENGINEERS
P.O. BOX 90606
ALBUQUERQUE, NEW MEXICO 87199
(505)828-2200, FAX (505)797-9539

Designed: DPS Drawn: WLV, BLN Checked: DMG Sheet 1 of 1
Scale: 1" = 30' Date: 4-28-98 Job: 97061

CITY OF ALBUQUERQUE
THIS MICROIMAGE IS THE BEST POSSIBLE REPRODUCTION DUE TO THE POOR QUALITY OF THE ORIGINAL DOCUMENT.

Re: 07 DATE 3-27-02 OF EOP

CITY OF ALBUQUERQUE

This microimage is certified to be a complete and accurate copy of the original as it appears in the files of the Public Works Department and was created in the normal course of business.

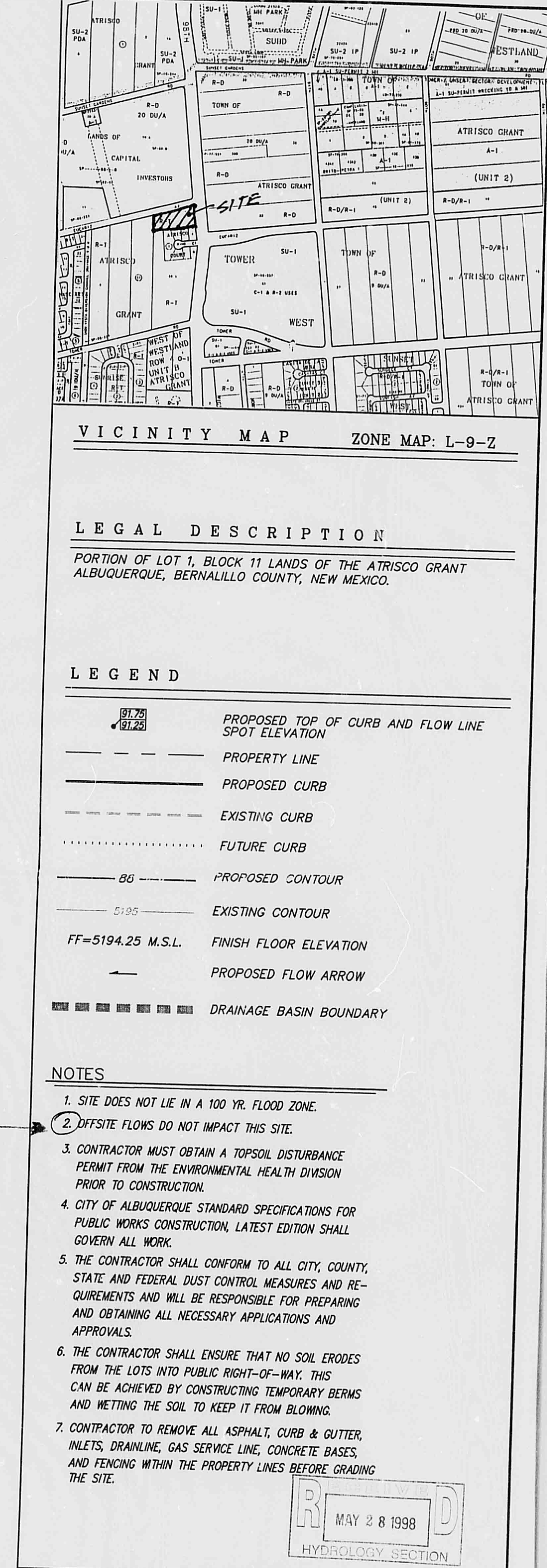
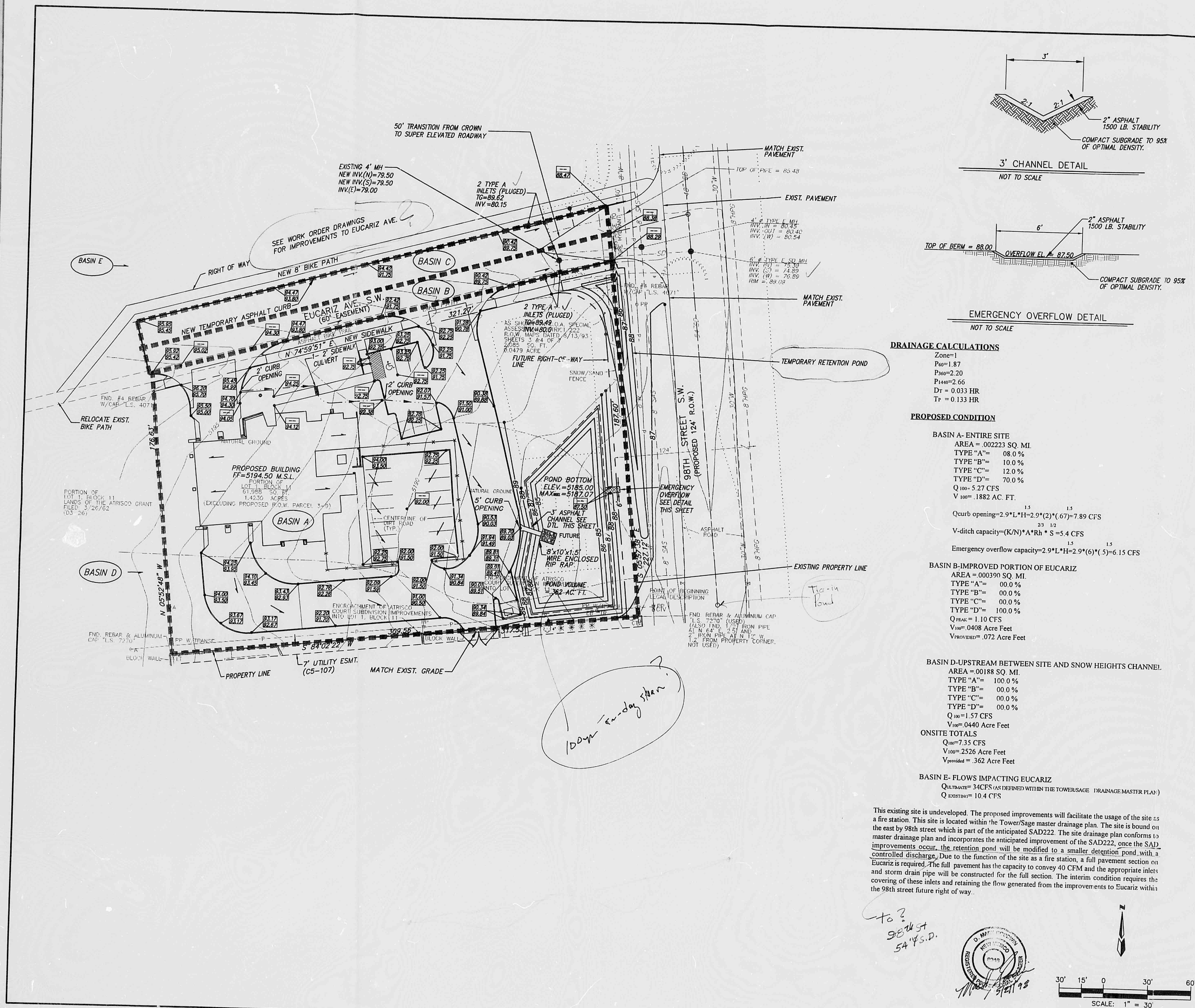
The photographic process used meets the Basic Microfilm Standards of the National Micrographics Association (MS115-1977)

Roberta Duran
DIRECTOR

Roberta Duran
NOTARY PUBLIC

OFFICIAL SEAL
Roberta Duran
NOTARY PUBLIC
STATE OF NEW MEXICO
4/1/02

CITY OF ALBUQUERQUE



FIRE STATION NO. 14
GRADING AND DRAINAGE PLAN

dmg MARK GOODWIN & ASSOCIATES, P.A.
CONSULTING ENGINEERS
P.O. BOX 90606
ALBUQUERQUE, NEW MEXICO 87199
(505)828-2200, FAX (505)797-9539

Designed: DPS Drawn: M.V., R.N. Checked: DMG
Scale: 1" = 30' Date: 4-28-98 Job: 97061 Sheet 2 of 2

CITY OF ALBUQUERQUE
THIS MICROIMAGE IS THE BEST POSSIBLE REPRODUCTION DUE TO THE POOR QUALITY OF THE ORIGINAL DOCUMENT.

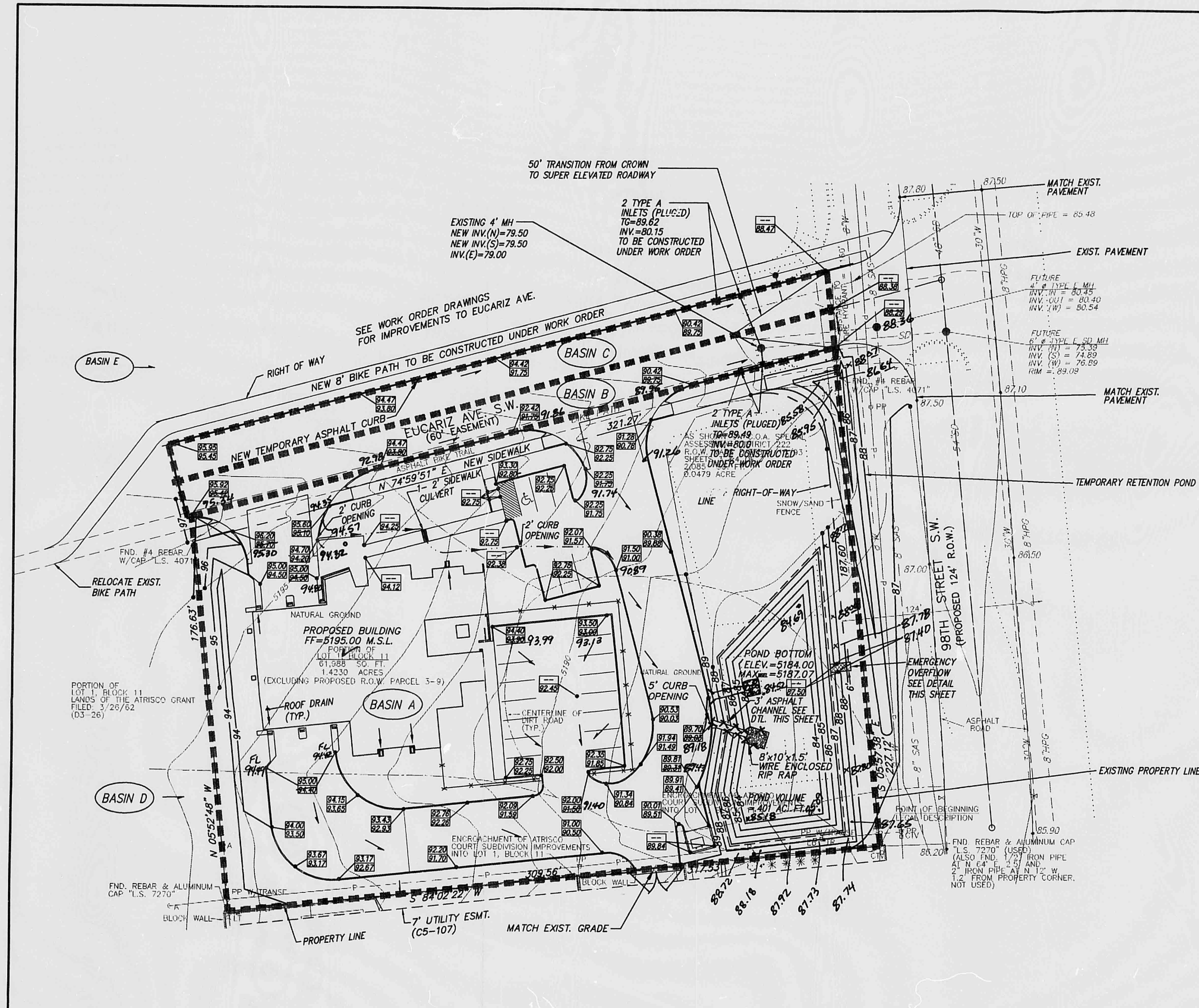
R# 27 DATE 3-27-02 OF EDP

CITY OF ALBUQUERQUE
This microimage is certified to be a complete and accurate copy of the original as it appears in the files of the Public Works Department and was created in the normal course of business.

The photographic process used meets the Basic Microfilm Standards of the National Micrographics Association (MS115-1977)

Chris Kelly
DIRECTOR

Roberta Duran
NOTARY PUBLIC
OFFICIAL SEAL
Roberta Duran
NOTARY PUBLIC
STATE OF NEW MEXICO
4/10/98



DRAINAGE CALCULATIONS

ZONE=1
 $P_{100}=1.87$
 $P_{50}=2.20$
 $P_{30}=2.68$
 $D=0.033$ HR
 $T=0.133$ HR

PROPOSED CONDITION

BASIN A-ENTIRE SITE
 AREA=0.02223 SQ. MI.
 TYPE "A"= 08.0%
 TYPE "B"= 10.0%
 TYPE "C"= 12.0%
 TYPE "D"= 70.0%
 $Q_{100}=5.27$ CFS
 $V_{100}=1.882$ ACRE FEET
 Ocurb opening=2.9'x1.5'=2.9'(2)'(6.7)=7.89 CFS
 Emergency overflow capacity=2.9'x1.5'x2.9'(6.7)=6.15 CFS

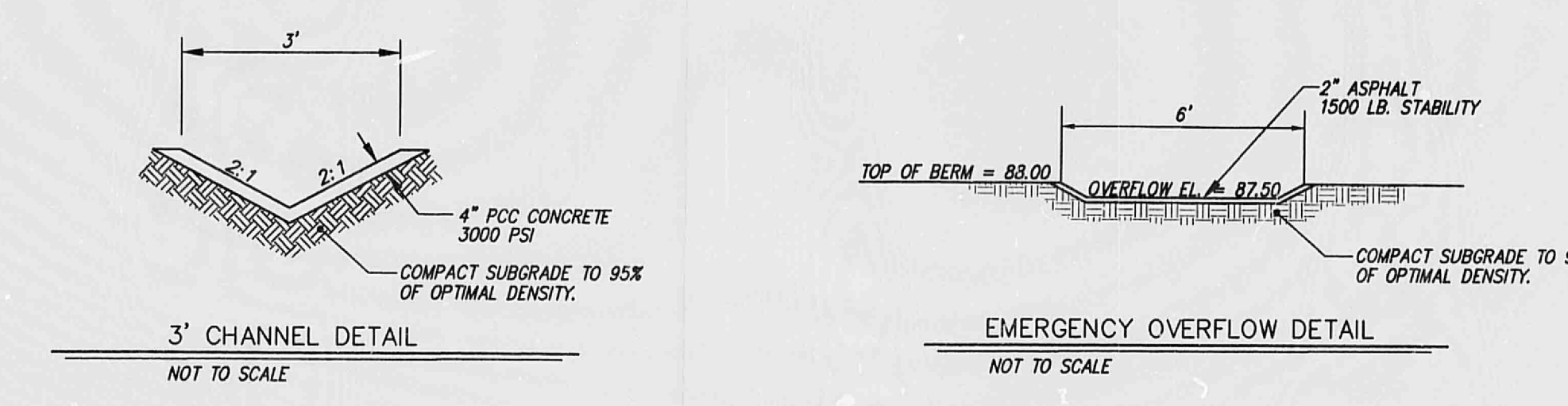
BASIN B & C-IMPROVED PORTION OF EUCARIZ
 AREA=0.00390 SQ. MI.
 TYPE "A"= 00.0%
 TYPE "B"= 00.0%
 TYPE "C"= 00.0%
 TYPE "D"= 100.0%
 $Q_{100}=1.10$ CFS
 $V_{100}=0.408$ ACRE FEET
 $V_{100} = V_{100} + A_s(P_{100}-P_{50})/12$
 $=0.408+2.496(3.67-2.2)/12=.071$ ACRE FEET
 $V_{100}=.072$ ACRE FEET

BASIN D-UPSTREAM BETWEEN SITE AND SNOW HEIGHTS CHANNEL
 AREA=0.0189 SQ. MI.
 TYPE "A"= 100.0%
 TYPE "B"= 00.0%
 TYPE "C"= 00.0%
 TYPE "D"= 00.0%
 $Q_{100}=1.57$ CFS
 $V_{100}=0.440$ ACRE FEET

ONSITE PONDING REQUIREMENTS
 $Q_{100}=1.882+0.440=2.322$ ACRE FEET
 $V_{100} = V_{100} + A_s(P_{100}-P_{50})/12$
 $=2.322+1.24(3.67-2.2)/12=.384$ ACRE FEET
 $V_{100}=.401$ ACRE FEET

BASIN E-FLOWS IMPACTING EUCARIZ
 $Q_{100}=34$ CFS (AS DEFINED WITHIN THE TOWER/SAFE DRAINAGE MASTER PLAN)
 $Q_{500}=8.39$ CFS

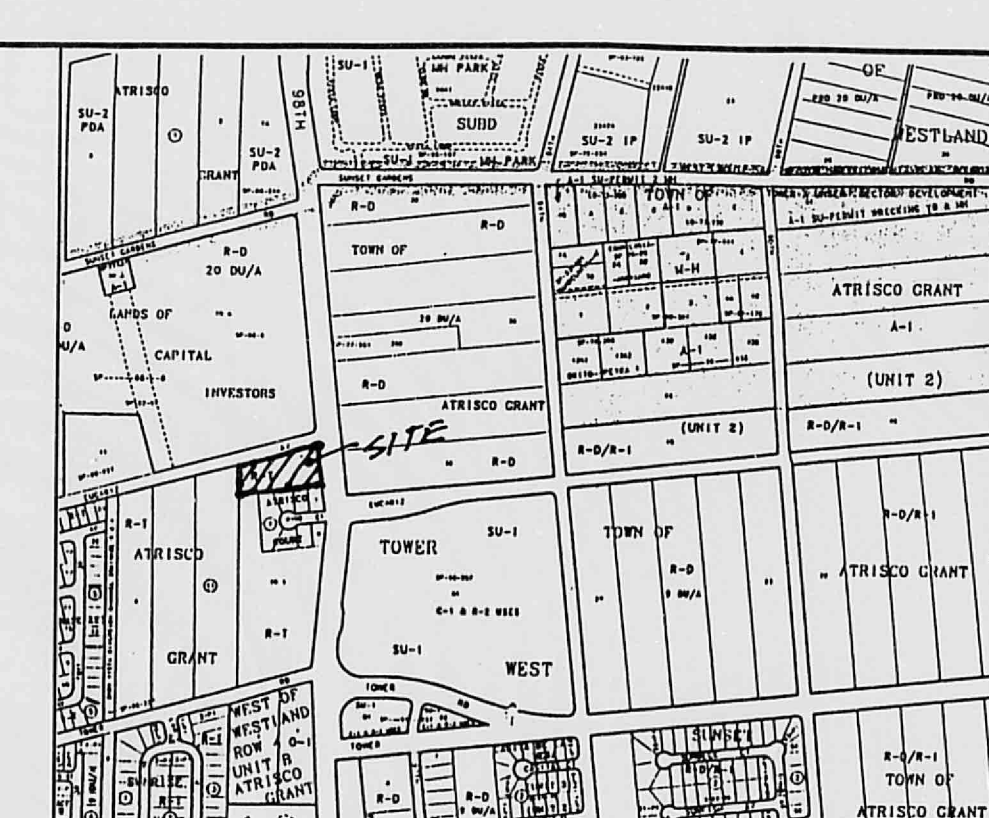
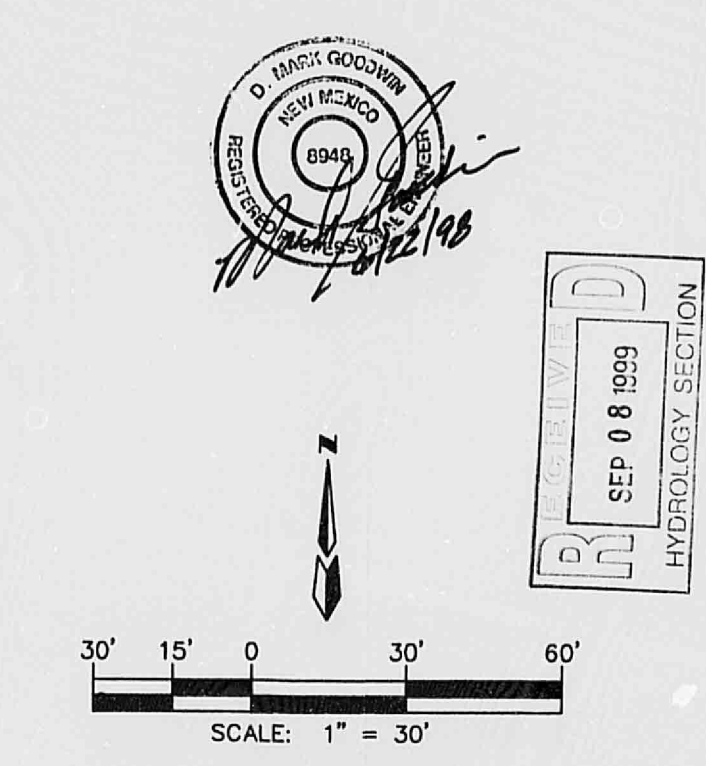
THIS EXISTING SITE IS UNDEVELOPED. THE PROPOSED IMPROVEMENTS WILL FACILITATE THE USAGE OF THE SITE AS A FIRE STATION. THIS SITE IS LOCATED WITHIN THE TOWER/SAFE MASTER DRAINAGE PLAN. THE SITE IS BOUND ON THE EAST BY 98TH STREET WHICH IS PART OF THE ANTICIPATED SADD22. THE SITE DRAINAGE PLAN CONFORMS TO MASTER DRAINAGE PLAN AND INCORPORATES THE ANTICIPATED IMPROVEMENT OF THE SADD22. ONCE THE SADD IMPROVEMENTS OCCUR, THE RETENTION POND WILL BE MODIFIED TO A SMALLER DETENTION POND WITH A CONTROLLED DISCHARGE. DUE TO THE FUNCTION OF THE SITE AS A FIRE STATION, A FULL PAVEMENT SECTION ON EUCARIZ IS REQUIRED. THE FULL PAVEMENT HAS THE CAPACITY TO CONVEY 40 CFS AND THE APPROPRIATE INLETS AND STORM DRAIN PIPE WILL BE CONSTRUCTED FOR THE FULL SECTION. THE INTERIM CONDITION REQUIRES THE COVERING OF THESE INLETS AND RETAINING THE FLOW GENERATED FROM THE IMPROVEMENTS TO EUCARIZ WITHIN THE 98TH STREET FUTURE RIGHT OF WAY.



RECORD DRAWING

I hereby certify that the information contained on this drawing has been revised in accordance with information furnished by the contractor, Farnco, Inc., and by the surveyor, Albuquerque Surveying, Inc., and reflects the construction as actually accomplished. This plan as constructed is in substantial compliance with the Approved Plan.

John M. Mackenzie
John M. Mackenzie
NMPE 11619



VICINITY MAP

ZONE MAP: L-9-Z

ASC BENCHMARK

THE STATION IS LOCATED 5 MILES WEST OF DOWNTOWN ALBUQUERQUE, ON THE 98TH STREET, OVERPASS AT U.S. INTERSTATE HIGHWAY 40 (I-40).

TO REACH THE STATION FROM THE INTERSECTION OF STATE ROAD 448 (COORS RD., N) AND CENTRAL AVE., GO WEST ON CENTRAL AVE., 1.9 MILE TO 98TH STREET, THEN GO NORTH ON 98TH STREET, 0.90 MILE TO THE SOUTH END OF BRIDGE CROSSING I-40, AND THE STATION ON THE LEFT.

STATION MARK IS A STANDARD INMASH BRASS TABLET, STAMPED "I-40-228", SET 0.5' BELOW THE PAVEMENT.

X=351650.01 Y=1486656.52 ELEVATION=5299.42

LEGAL DESCRIPTION

PORTION OF LOT 1, BLOCK 11 LANDS OF THE ATRISCO GRANT ALBUQUERQUE, BERNALILLO COUNTY, NEW MEXICO.

LEGEND

- PROPOSED TOP OF CURB AND FLOW LINE SPOT ELEVATION (Revised, As-built Elev.)
- PROPERTY LINE
- PROPOSED CURB
- EXISTING CURB
- FUTURE CURB
- PROPOSED CONTOUR
- EXISTING CONTOUR
- FF=5194.25 M.S.L. FINISH FLOOR ELEVATION
- PROPOSED FLOW ARROW
- DRAINAGE BASIN BOUNDARY

NOTES

1. SITE DOES NOT LIE IN A 100 YR. FLOOD ZONE.
2. CONTRACTOR MUST OBTAIN A TOPSOIL DISTURBANCE PERMIT FROM THE ENVIRONMENTAL HEALTH DIVISION PRIOR TO CONSTRUCTION.
3. CITY OF ALBUQUERQUE STANDARD SPECIFICATIONS FOR PUBLIC WORKS CONSTRUCTION, LATEST EDITION SHALL GOVERN ALL WORK.
4. THE CONTRACTOR SHALL CONFORM TO ALL CITY, COUNTY, STATE AND FEDERAL DUST CONTROL MEASURES AND REQUIREMENTS AND WILL BE RESPONSIBLE FOR PREPARING AND OBTAINING ALL NECESSARY APPLICATIONS AND APPROVALS.
5. THE CONTRACTOR SHALL ENSURE THAT NO SOIL ERODES FROM THE LOTS INTO PUBLIC RIGHT-OF-WAY. THIS CAN BE ACHIEVED BY CONSTRUCTION TEMPORARY BERMS AND NETTING THE SOIL TO KEEP IT FROM BLOWING.
6. CONTRACTOR TO REMOVE ALL ASPHALT, CURB & GUTTER, INLETS, DRAINAGE, GAS SERVICE LINE, CONCRETE BASES, AND FENCING WITHIN THE PROPERTY LINES BEFORE GRADING THE SITE.
7. COORDINATE LOCATION OF OVERFLOW WITH TREES (ON SHEET 1).
8. STORM DRAIN AND STREET IMPROVEMENTS FOR INFORMATION ONLY SEE WORK ORDER DRAWINGS FOR DETAIL.
9. ALL WORK WITHIN RIGHT OF WAY TO BE CONSTRUCTED BY WORK ORDER PLANS.

FIRE STATION NO. 14

GRADING AND DRAINAGE PLAN

dmg MARK GOODWIN & ASSOCIATES, P.A.
CONSULTING ENGINEERS
P.O. BOX 90606
ALBUQUERQUE, NEW MEXICO 87199
(505)828-2200, FAX (505)797-9539

Designed: DPS Drawn: M.V. BLN Checked: DMG
Scale: 1" = 30' Date: 4-28-98 Job: 97061 Sheet 1 of 1

CITY OF ALBUQUERQUE

THIS MICROIMAGE IS THE BEST POSSIBLE REPRODUCTION DUE TO THE POOR QUALITY OF THE ORIGINAL DOCUMENT.

RE 27 DATE 3-27-02 OF EDP

CITY OF ALBUQUERQUE

This microimage is certified to be a complete and accurate copy of the original as it appears in the files of the Public Works Department and was created in the normal course of business.

The photographic process used meets the Basic Microfilm Standards of the National Micrographics Association (ANSI Z39.18-1997)

Roberta Duran
NOTARY PUBLIC

OFFICIAL SEAL
Roberta Duran
NOTARY PUBLIC
STATE OF NEW MEXICO