

CITY OF ALBUQUERQUE



February 8, 2016

Dave Puritz
NCA Architects
1306 Rio Grande Blvd., NW
Albuquerque, NM 87104

**Re: Catholic Charities
2010 Bridge Blvd., SW
Traffic Circulation Layout**
Engineer's/Architect's Stamp dated 2-2-16 (L12-D012)

Dear Mr. Puritz,

Based upon the information provided in your submittal received 2-5-16, the above referenced plan cannot be approved for Building Permit until the following comments are addressed:

1. The van wheelchair accessible spaces must include an 8-foot wide access aisle; all other aisles should be 5 feet in width. This is in accordance with the federal Americans with Disabilities Act - Accessibility Guidelines, which supersedes COA Codes. The federal guidelines are being incorporated into the Development Process Manual (DPM).
2. All ADA access aisles shall have the words "**NO PARKING**" in capital letters, each of which shall be at least one foot high and at least two inches wide, placed at the rear of the parking space so as to be close to where an adjacent vehicle's rear tire would be placed. (66-1-4.1.B NMSA 1978)
3. Please include two copies of the traffic circulation layout at the next submittal.

Resubmit acceptable package along with fully completed Drainage Transportation Information Sheet to front counter personnel for log in and evaluation by Transportation. If you have any questions, please contact Gary Sandoval (505) 924-3675 or me at 924-3991.

Sincerely,

Racquel M. Michel, P.E.
Traffic Engineer, Planning Dept.
Development Review Services

\gs via: email
C: CO Clerk, File



City of Albuquerque

Planning Department
Development & Building Services Division

DRAINAGE AND TRANSPORTATION INFORMATION SHEET (REV 09/2015)

Project Title: CATHOLIC CHARITIES Building Permit #: _____ City Drainage #: L12D012
 DRB#: _____ EPC#: _____ Work Order#: _____
 Legal Description: PLAT OF LOT 1-A CASA DE CORAZON
 City Address: 2010 BRIDGE BLVD SW 87105 PH: 247-0442
 Engineering Firm: _____ Contact: _____
 Address: _____
 Phone#: _____ Fax#: _____ E-mail: _____
 Owner: CATHOLIC CHARITIES Contact: BETH CHAVEZ
 Address: 3301 CANDELARIA RD NE ABQ, 87107
 Phone#: 505-724-4670 Fax#: _____ E-mail: chavezb@ccastnm.org
 Architect: NCA ARCHITECTS Contact: DAVE PURITZ
 Address: 1306 RIO GRANDE BLVD NW, ABQ 87104
 Phone#: 505-255-6400 Fax#: _____ E-mail: dpuritz@nca-architects.com
 Other Contact: _____ Contact: _____
 Address: _____
 Phone#: _____ Fax#: _____ E-mail: _____

Check all that Apply:

DEPARTMENT:

☐ HYDROLOGY/ DRAINAGE
☒ TRAFFIC/ TRANSPORTATION
☐ MS4/ EROSION & SEDIMENT CONTROL

TYPE OF SUBMITTAL:

☐ ENGINEER/ ARCHITECT CERTIFICATION
☐ CONCEPTUAL G & D PLAN
☐ GRADING PLAN
☐ DRAINAGE MASTER PLAN
☐ DRAINAGE REPORT
☐ CLOMR/LOMR
☒ TRAFFIC CIRCULATION LAYOUT (TCL)
☐ TRAFFIC IMPACT STUDY (TIS)
☐ EROSION & SEDIMENT CONTROL PLAN (ESC)
☐ OTHER (SPECIFY) _____

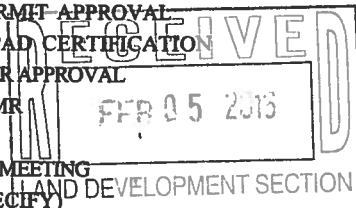
IS THIS A RESUBMITTAL? ☒ Yes ☐ No

DATE SUBMITTED: 1/19/16

By: [Signature]

CHECK TYPE OF APPROVAL/ACCEPTANCE SOUGHT:

☐ BUILDING PERMIT APPROVAL
☐ CERTIFICATE OF OCCUPANCY
☐ PRELIMINARY PLAT APPROVAL
☐ SITE PLAN FOR SUB'D APPROVAL
☐ SITE PLAN FOR BLDG. PERMIT APPROVAL
☐ FINAL PLAT APPROVAL
☐ SIA/ RELEASE OF FINANCIAL GUARANTEE
☐ FOUNDATION PERMIT APPROVAL
☐ GRADING PERMIT APPROVAL
☐ SO-19 APPROVAL
☐ PAVING PERMIT APPROVAL
☐ GRADING/ PAD CERTIFICATION
☐ WORK ORDER APPROVAL
☐ CLOMR/LOMR
☐ PRE-DESIGN MEETING
☐ OTHER (SPECIFY) _____

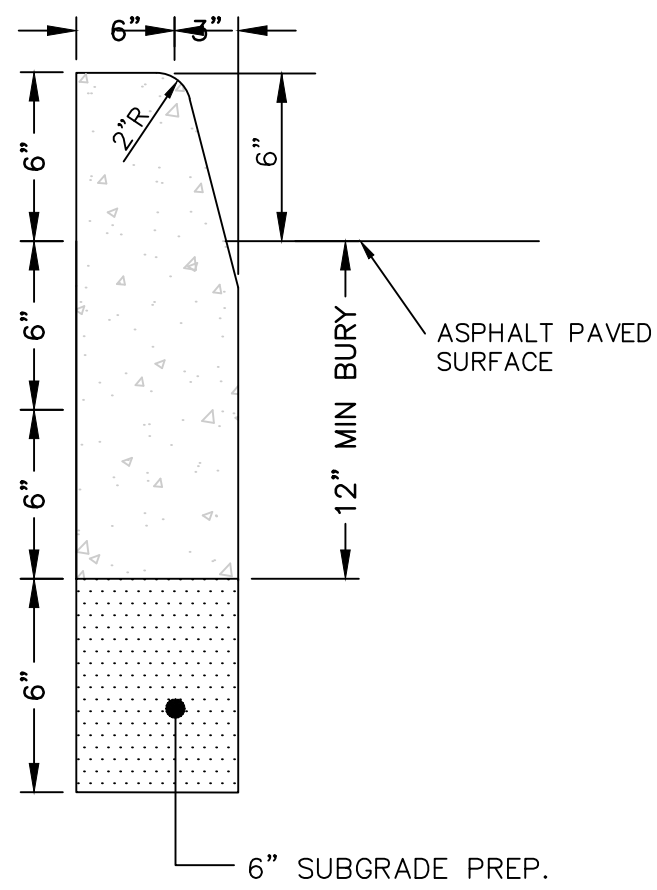


COA STAFF: _____ ELECTRONIC SUBMITTAL RECEIVED: _____

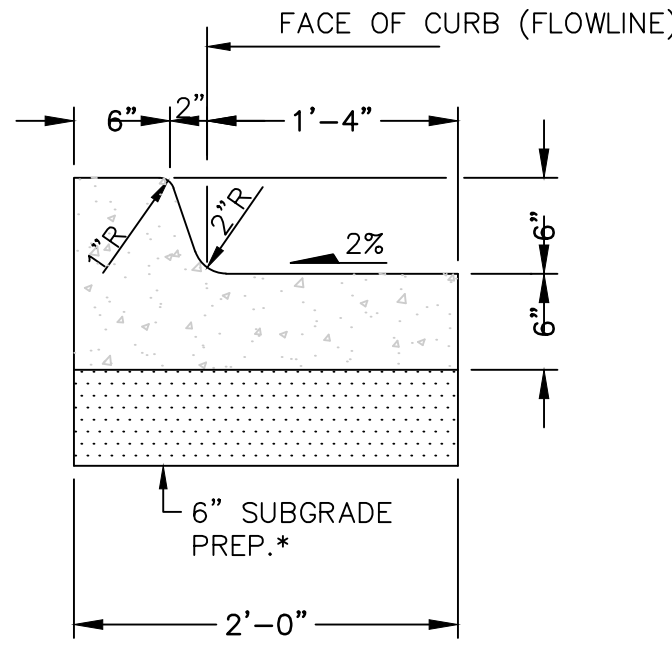
RE-SUBMITTED 2/05/16

Arch Stamp 2-2-16

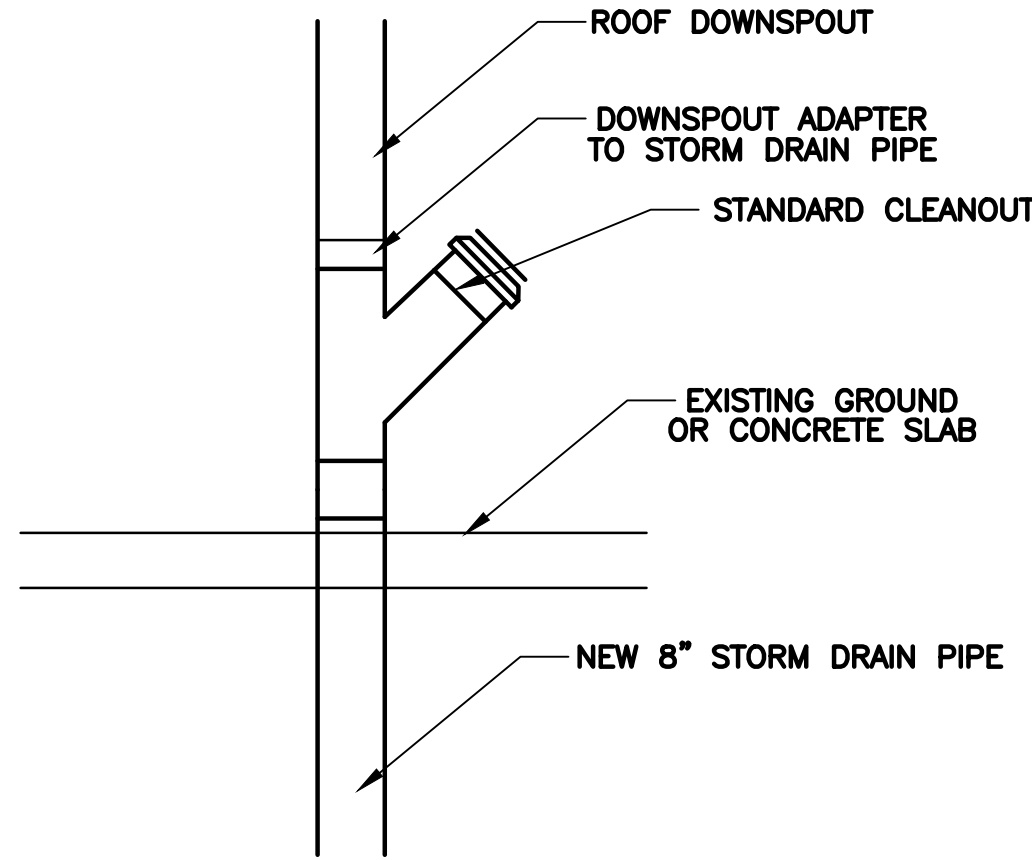
T:\Projects\NCA\Architectural\Drawings\15-010 GRADING PLAN REV.dwg, C-501 MISC. DETAILS, 11/11/2015 2:27:59 PM, jjaquez, l.



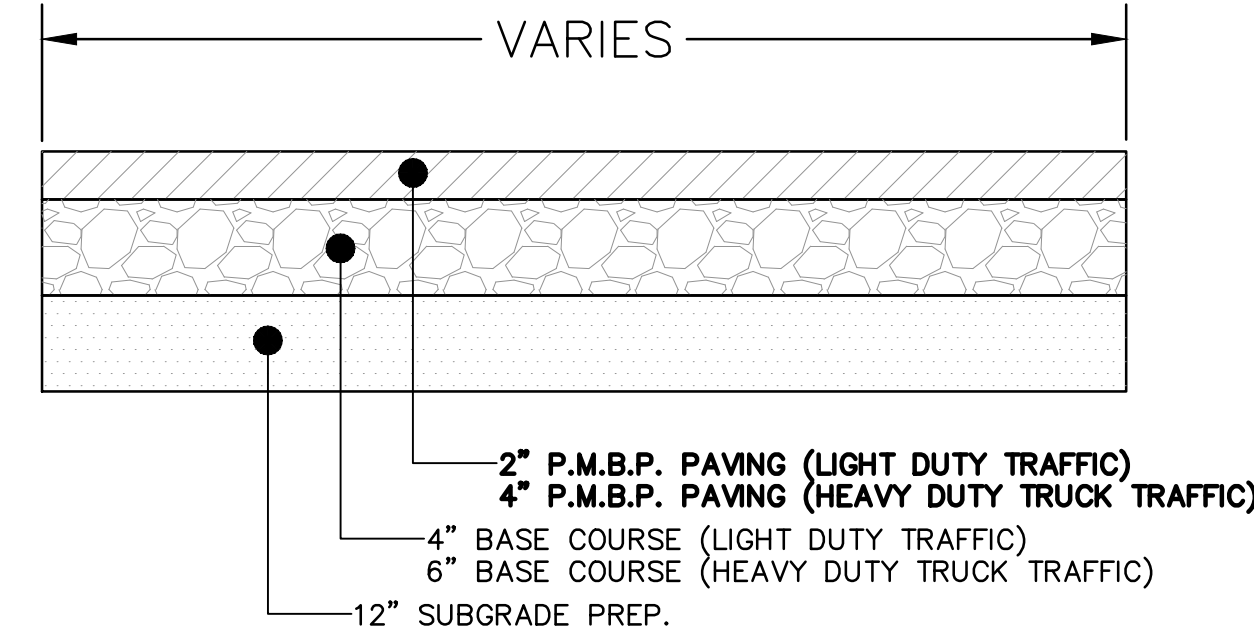
D1 HEADER CURB DETAIL
SCALE: NOT TO SCALE



D2 TYPICAL CURB AND GUTTER SECTION
SCALE: NOT TO SCALE

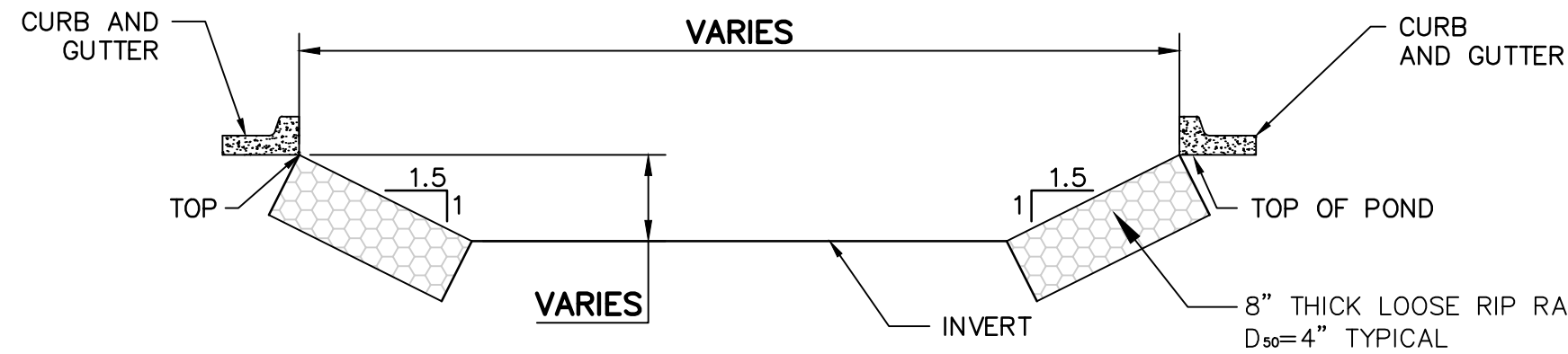


D3 DOWNSPOUT CLEANOUT DETAIL
SCALE: NOT TO SCALE

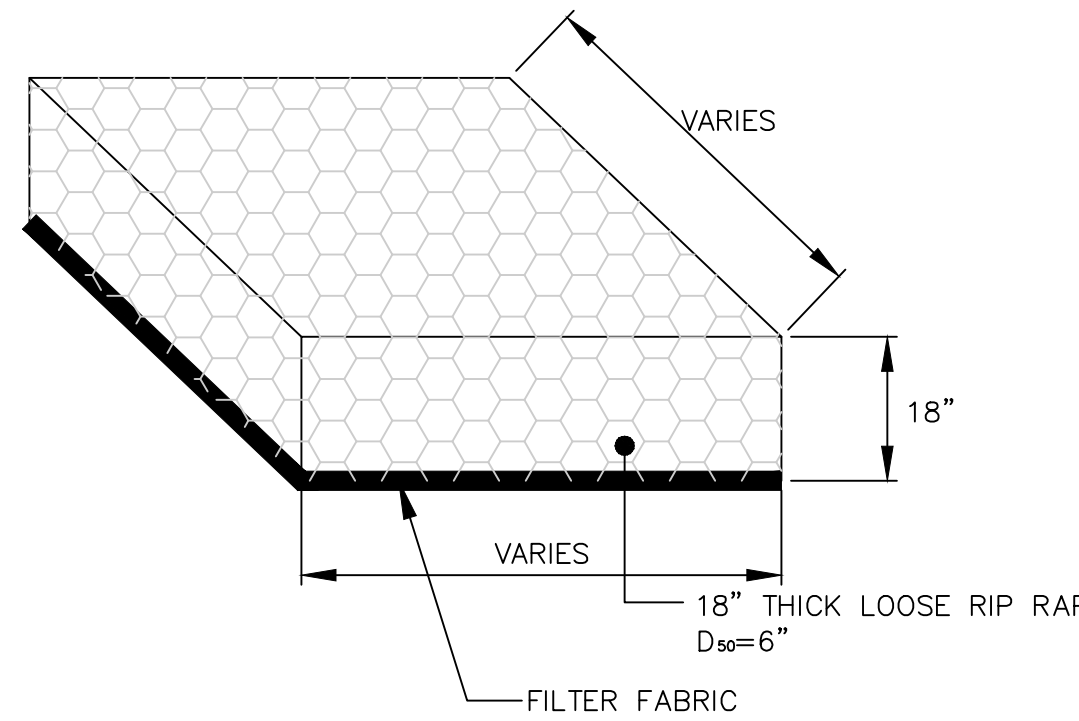


D4 TYPICAL ASPHALT PAVING DETAIL
SCALE: NOT TO SCALE

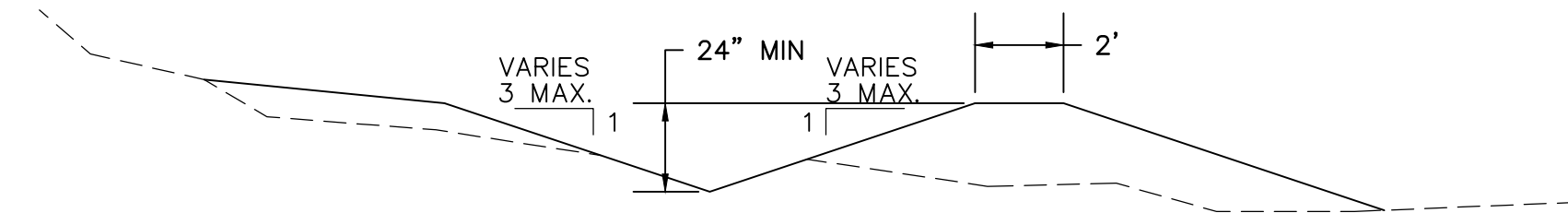
GEOTECH INFORMATION:
THE PAVEMENT SECTION THICKNESS
INDICATED ON THE TYPICAL SECTIONS,
WERE PROVIDED BY:
AMEC FOSTER WHEELER ENVIRONMENT AND INFRASTRUCTURE, INC.
8519 JEFFERSON N.E.
ALBUQUERQUE, NM 87109
DATED: MAY 21, 2015
TITLE: CATHOLIC CHARITIES NEW BRIDGE STREET LEARNING
AND ADMINISTRATIVE BUILDING 2010 AND 2012 BRIDGE STREET



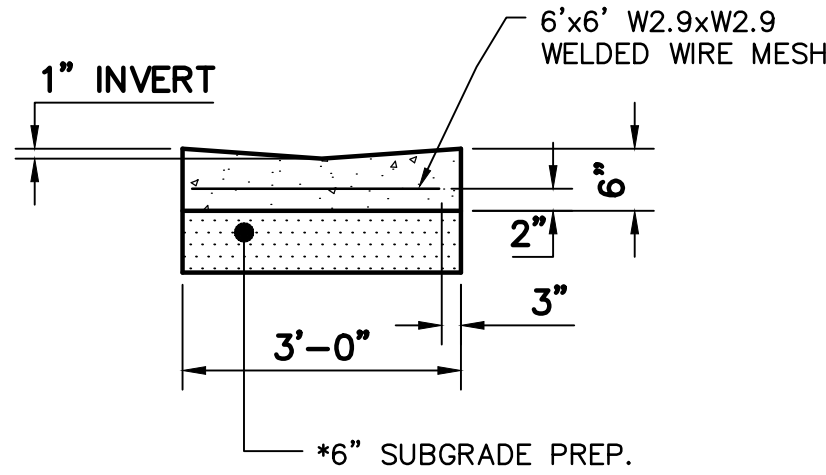
C1 TYPICAL WATER HARVESTING AREA DETAIL
SCALE: NOT TO SCALE



D1 CLASS 'B' RIP RAP PAD DETAIL
SCALE: NOT TO SCALE
SEE PLANS FOR SHAPE AND DIMENSIONS

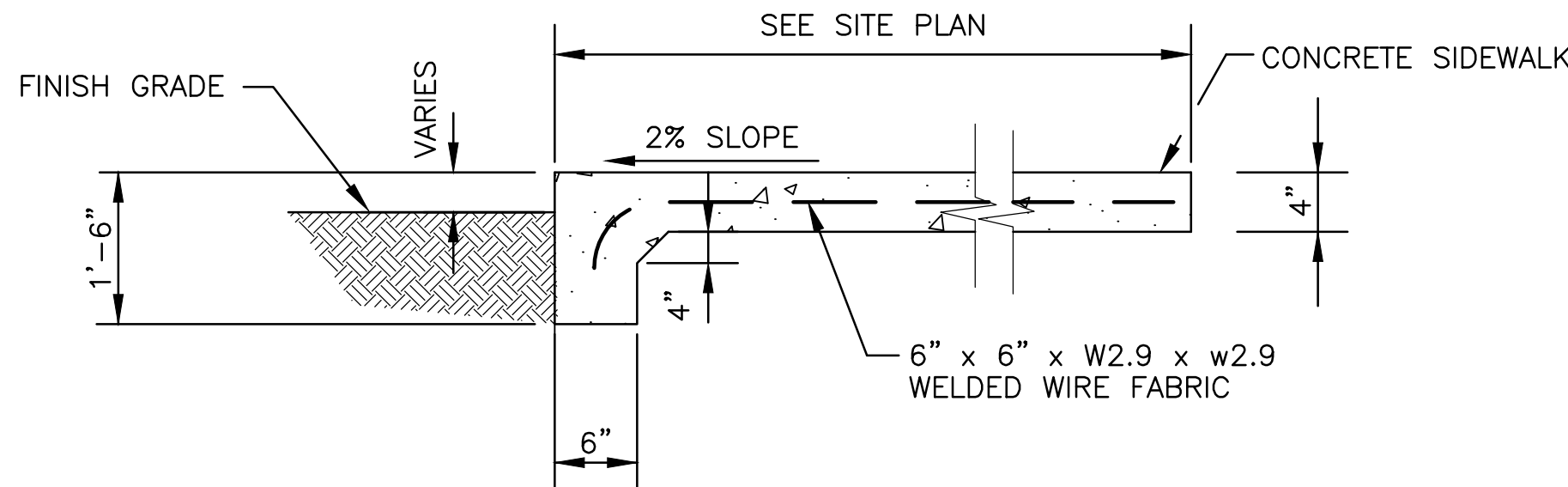


D2 EARTHENED SWALE DETAIL
SCALE: NOT TO SCALE

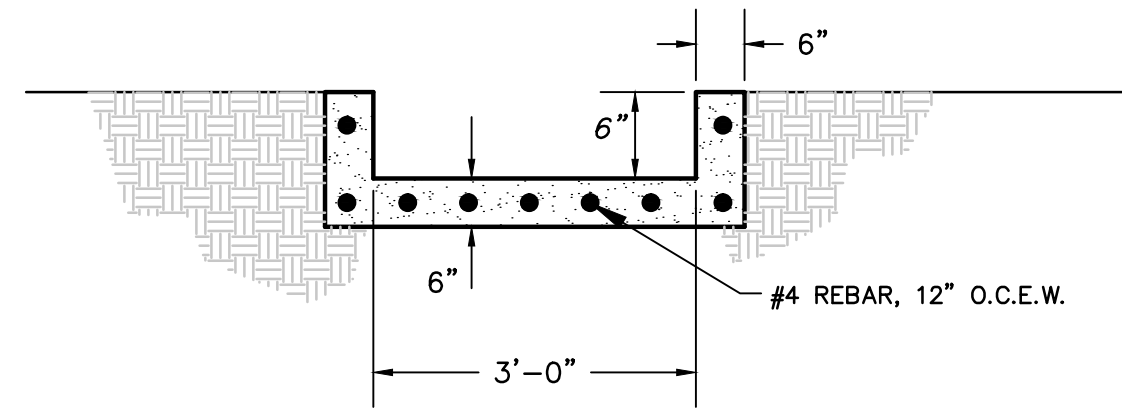


B1 6"x36" CONCRETE VALLEY GUTTER DETAIL
SCALE: NOT TO SCALE

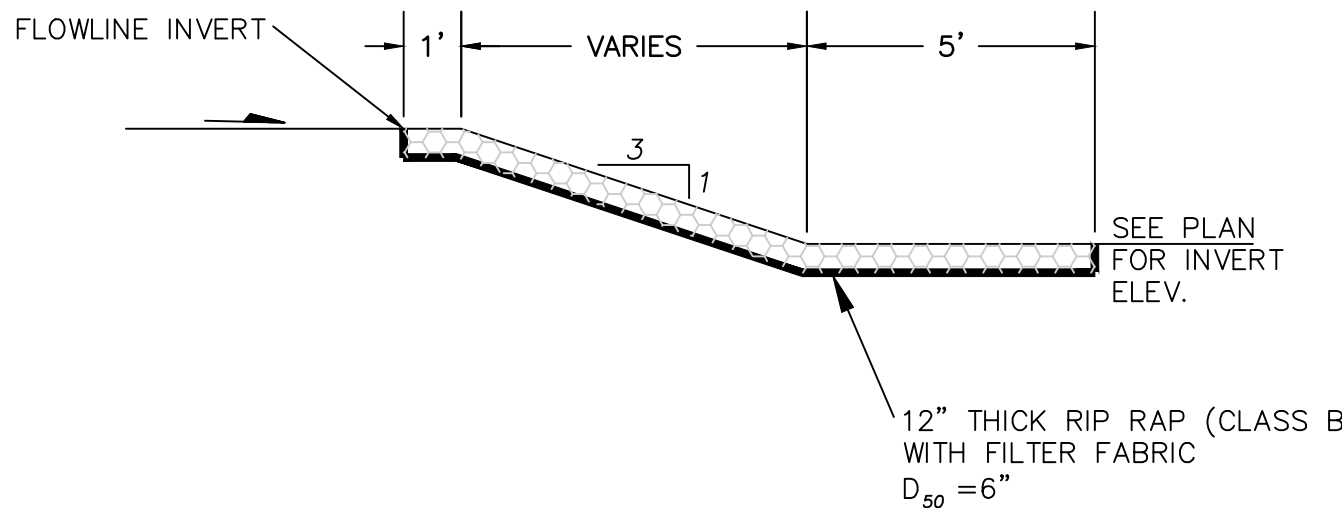
* 6" SUBGRADE PREP. SHALL BE CONSIDERED INCIDENTAL TO ITEM NO. 609636, CONCRETE VALLEY GUTTER - 6"x36" AND NO SEPERATE MEASUREMENT OR PAYMENT WILL BE MADE FOR THE WORK.



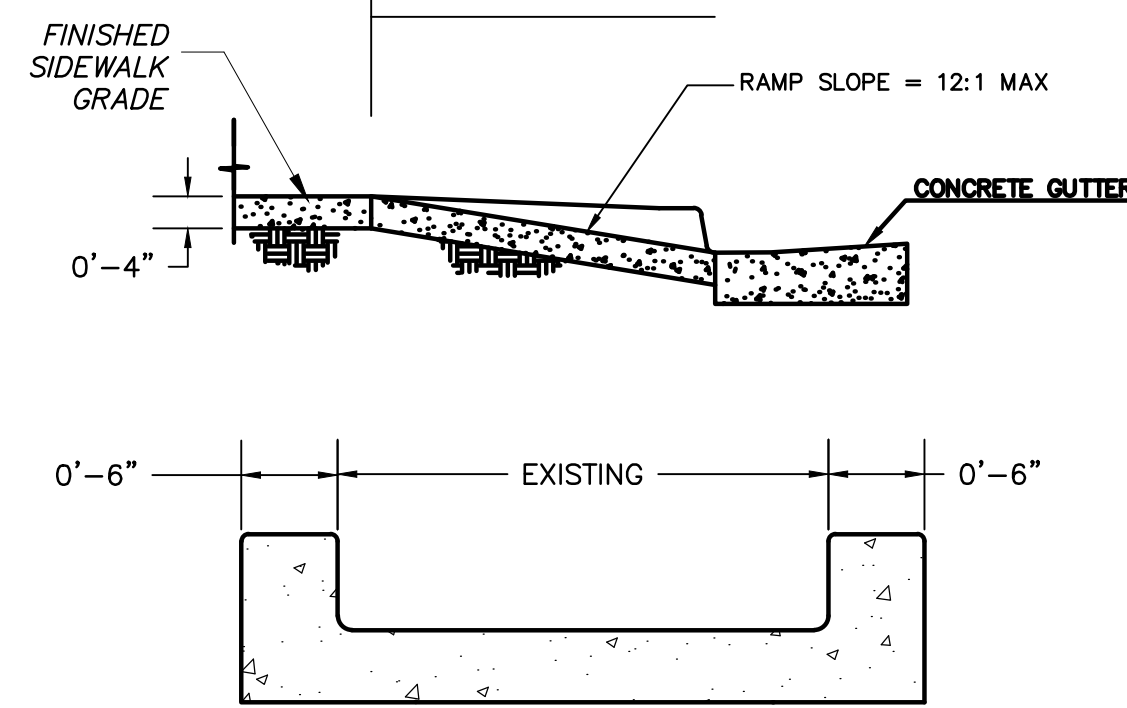
A1 TYPICAL TURNDOWN SIDEWALK DETAIL
SCALE: NOT TO SCALE



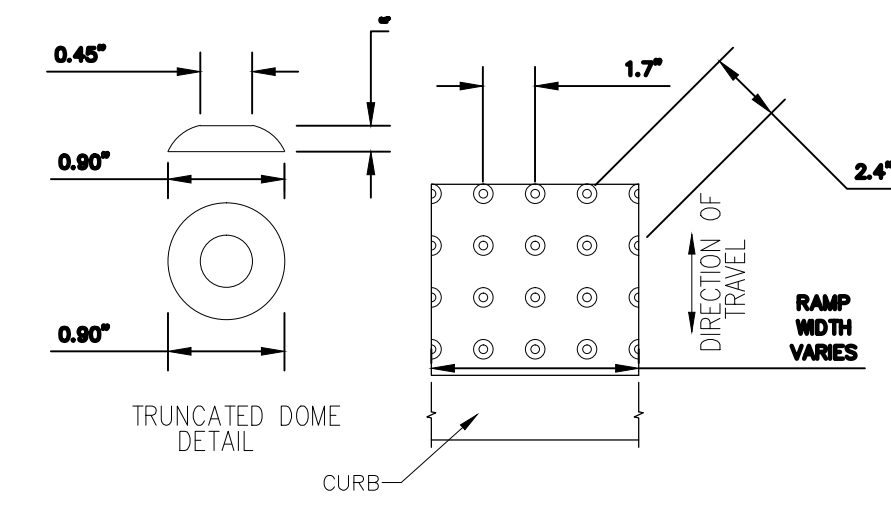
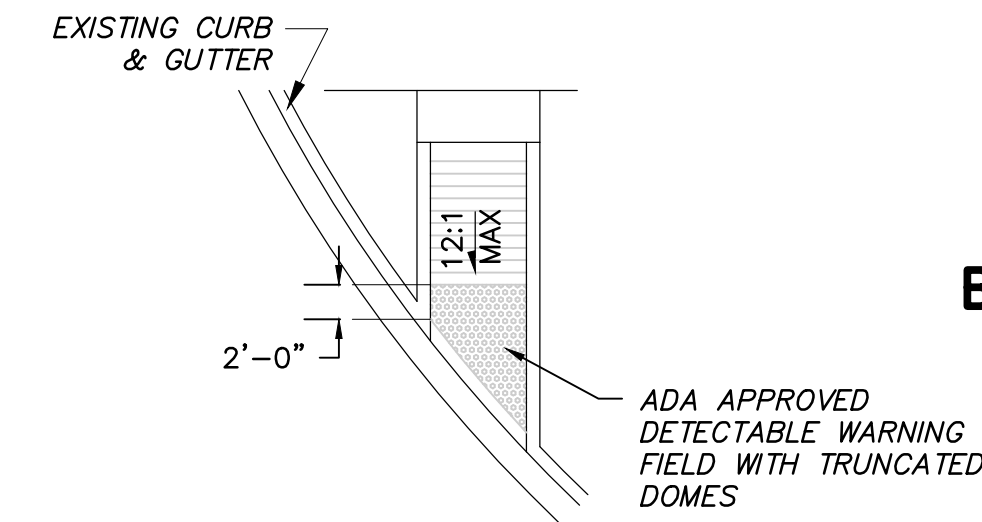
B2 CONCRETE CHANNEL DETAIL
SCALE: NOT TO SCALE



A3 RIP RAP RUNDOWN DETAIL TYPE "A"
SCALE: NOT TO SCALE



B4 HANDICAP RAMP DETAIL
SCALE: NOT TO SCALE



A5 DETECTABLE WARNING PATTERN
SCALE: NOT TO SCALE

ME MILLER ENGINEERING CONSULTANTS
Engineers • Planners
3500 COMANCHE, NE
BUILDING F
ALBUQUERQUE, NM 87107
(505)888-7500
(505)888-3800 (FAX)
WWW.MECNM.COM

NCA
ARCHITECTS - PLANNERS - AIA

1306 RIO GRANDE BLVD NW
ALBUQUERQUE, NM 87104
505-255-6400 505-268-6954 FAX
WWW.NCA-ARCHITECTS.COM

ARCHITECT

CONSULTANT



PROJECT TITLE

CATHOLIC
CHARITIES

ALBUQUERQUE
NEW MEXICO

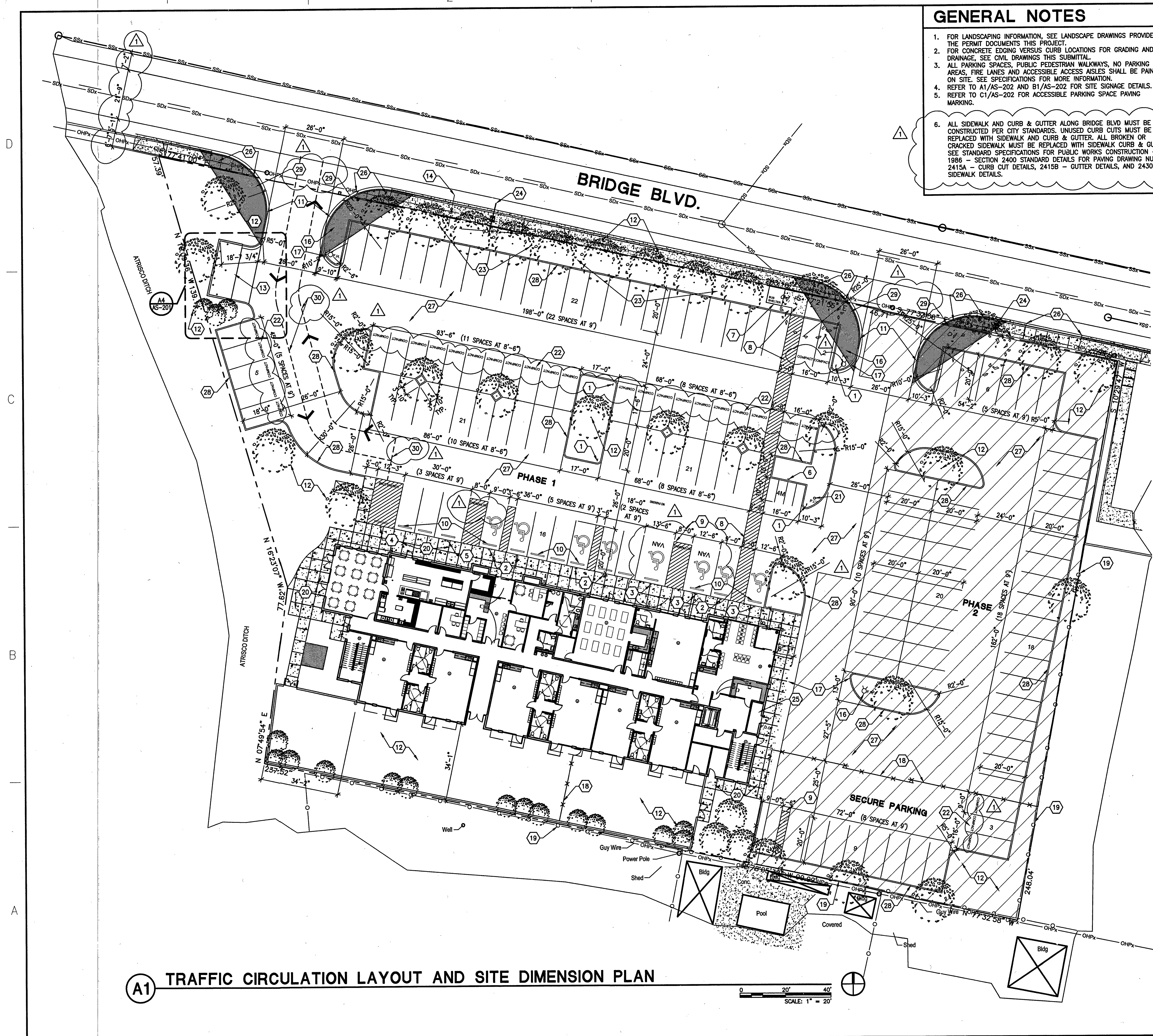
REVISIONS:

MK	DATE	DESCRIPTION
DRAWN BY:	XX	CHECKED BY:
PROJECT NUMBER:	MYO	
A14.23		
DATE:		
11/11/2015		
SHEET TITLE:		

MISCELLANEOUS
DETAILS

SHEET NO:

C-501



- ### GENERAL NOTES
1. FOR LANDSCAPING INFORMATION, SEE LANDSCAPE DRAWINGS PROVIDED IN THE PERMIT DOCUMENTS THIS PROJECT.
 2. FOR CONCRETE EDGING VERSUS CURB LOCATIONS FOR GRADING AND DRAINAGE, SEE CIVIL DRAWINGS THIS SUBMITTAL.
 3. ALL PARKING SPACES, PUBLIC PEDESTRIAN WALKWAYS, NO PARKING AREAS, FIRE LANES AND ACCESSIBLE ACCESS AISLES SHALL BE PAINTED ON SITE. SEE SPECIFICATIONS FOR MORE INFORMATION.
 4. REFER TO A1/AS-202 FOR SITE SIGNAGE DETAILS.
 5. REFER TO C1/AS-202 FOR ACCESSIBLE PARKING SPACE PAVING MARKING.
 6. ALL SIDEWALK AND CURB & GUTTER ALONG BRIDGE BLVD MUST BE CONSTRUCTED PER CITY STANDARDS. UNPAVED CURB CUTS MUST BE REPLACED WITH SIDEWALK AND CURB & GUTTER. ALL BROKEN OR CRACKED SIDEWALK MUST BE REPLACED WITH SIDEWALK CURB & GUTTER. SEE STANDARD SPECIFICATIONS FOR PUBLIC WORKS CONSTRUCTION - 1986 - SECTION 2400 STANDARD DETAILS FOR PAVING DRAWING NUMBER 2415A - CURB CUT DETAILS, 2415B - GUTTER DETAILS, AND 2430 - SIDEWALK DETAILS.

- ### SITE INFORMATION
1. LEGAL DESCRIPTION: LOT 1, LAND DIVISION PLAT OF TRACT 148-A1-A1-A1-A1, TRACT 148A1A1A1A1, TRACT 147B2A, TRACT 148A1B AND TRACT 147B1 M.R.G.C.D. MAP NO. 42.
 2. DEVELOPMENT TYPE: BUSINESS (DAYCARE, CLASSROOM, BUSINESS OFC).
 3. SIZE: 2.16 ACRES.
 4. PARKING: SEE SUMMARY THIS SHEET.
 5. EXECUTIVE SUMMARY:
 - 5.1. GENERAL PROJECT LOCATION - SOUTH ATRISCO NEIGHBORHOOD, SOUTH OF BRIDGE BLVD SW, EAST OF ANTHONY LANE SW.
 - 5.2. DEVELOPMENT CONCEPT - REMOVE EXISTING BUILDING, PROVIDE NEW 3 STORY BUILDING AND OFF STREET PARKING.
 - 5.3. TRAFFIC CIRCULATION CONCEPT - INTERNAL SITE.
 - 5.4. IMPACT ON ADJACENT SITES - NONE.
 - 5.5. TRAFFIC IMPACT STUDIES - NONE REQUIRED.
 - 5.6. VARIANCES - NONE REQUIRED.

- ### KEYED NOTES
1. PEDESTRIAN CROSSING SIGN.
 2. HANDICAPPED PARKING SIGN.
 3. HANDICAPPED VAN PARKING SIGN.
 4. NO PARKING, TEMPORARY LOADING ZONE SIGN.
 5. VAN PARKING FOR DAYCARE SIGN.
 6. MOTOR CYCLE PARKING SIGN.
 7. BUS SHELTER.
 8. PEDESTRIAN WALKWAY TO BUILDING.
 9. ACCESSIBLE ACCESS AISLE.
 10. 6' CONCRETE WHEEL STOP AT PARKING/CONCRETE WALKWAY, SEE DETAIL D1/AS-202 - TYPICAL.
 11. CONCRETE CURB AND GUTTER.
 12. LANDSCAPING - SEE LANDSCAPE DRAWINGS IN PERMIT DOCUMENTS.
 13. DUAL DUMPSTER PAD AND SCREEN.
 14. GAS AT PROPERTY LINE.
 15. WATER METER.
 16. FIRE HYDRANT.
 17. FIRE LANE.
 18. SECURITY FENCING AND GATE TO TIE TO EXISTING FENCE AT PERIMETER.
 19. EXISTING FENCING TO REMAIN.
 20. NEW CONCRETE WALKWAY.
 21. POST INDICATOR VALVE (PIV) FOR FIRE DEPARTMENT.
 22. COMPACT PARKING SPACE.
 23. SITE WATER RETENTION AREA - SEE CIVIL.
 24. WATER METER.
 25. FIRE RISER ROOM.
 26. CONCRETE SIDE WALK, GUTTER & RAMP - SEE CIVIL.
 27. ASPHALT PAVING - SEE CIVIL.
 28. CONCRETE CURB - SEE CIVIL.
 29. PROVIDE CLEAR SIGHT AT THESE LOCATIONS. SEE CITY DEVELOPMENT PROCESS MANUAL CHAPTER 23 SECTION 3 PART D.5 FOR SIGHT DISTANCE EXHIBIT.
 30. DELIVERY VEHICLE ROUTE WITH MIN. 25'-0" RADIUS PROVIDED.

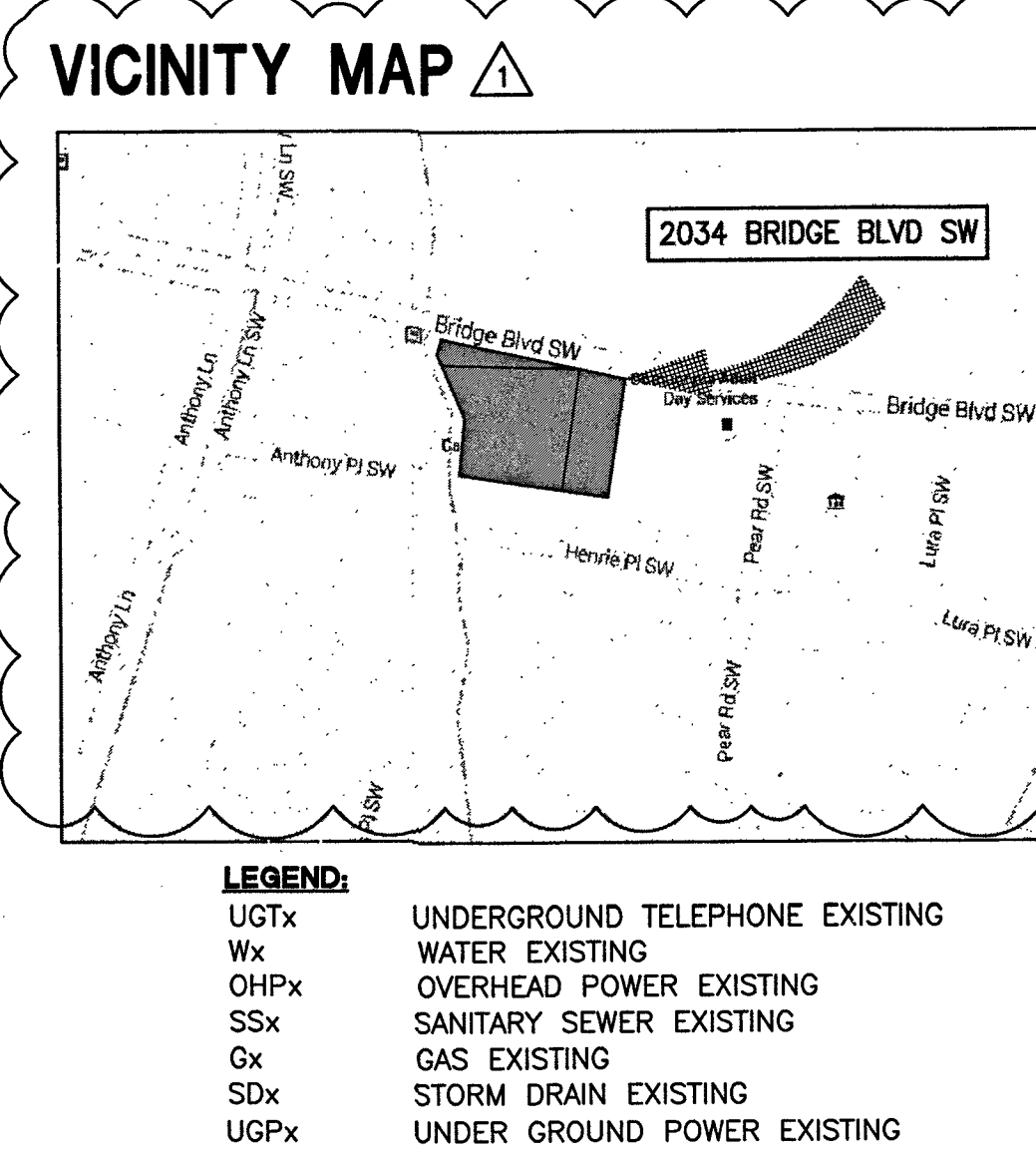
PARKING SUMMARY

NOTE: PARKING CALCULATIONS PERFORMED IN ACCORDANCE WITH 2014 NEW MEXICO ADMINISTRATIVE CODE, IBC 2009, ALBUQUERQUE CODE OF ORDINANCES AND ALBUQUERQUE DEVELOPMENT PROCESS MANUAL 2015.

PARKING SPACE: A STANDARD SPACE IS 8'-6"x18", COMPACT OR "C" SIZE IS SMALLER THAN THE STANDARD BUT MEETS THE MINIMUM REQUIREMENTS. COMPACT SPACES MAY TAKE UP A 1/3 OF THE TOTAL PARKING COUNT AND BE AT LEAST 8' IN WIDTH AND 15' IN LENGTH (14.16.1.5).

CHILD CARE	7,650 SF LEASABLE / 500 =	17 SPACES REQUIRED
ADULT LEARNING CENTER	6 CLASSROOMS X 25 SEATS = 150 / 2 =	75 SPACES REQUIRED
1 COMPUTER LAB X 30 = 30 / 2 =		15 SPACES REQUIRED
1 SM. COMPUTER LAB X 10 = 10 / 2 =		5 SPACES REQUIRED
ADMINISTRATION	9,994 SF / 300 =	33 SPACES REQUIRED
TOTAL PARKING REQUIRED		145 SPACES REQUIRED
PARKING REDUCTIONS		
10% BUS ROUTE		-14 SPACES
5% BUS SHELTER		-07 SPACES
TOTAL PARKING REDUCTION		-21 SPACES
TOTAL PARKING REQUIRED INCLUDING REDUCTIONS		124 SPACES REQUIRED
		143 SPACES PROVIDED

ACCESSIBLE PARKING SPACES
(IBC 2009 - CHAPTER 11 - SECTION 06 - TABLE 1106.1)
TOTAL PARKING SPACES: 101-300
8 HANDICAPPED PARKING SPACES ARE REQUIRED, 8 ARE PROVIDED.
4 MOTORCYCLE PARKING SPACE ARE REQUIRED, 4 ARE PROVIDED.



A1 TRAFFIC CIRCULATION LAYOUT AND SITE DIMENSION PLAN

1308 RIO GRANDE BLVD NW
ALBUQUERQUE, NM 87104
505-255-6400 505-268-6954 FAX
WWW.NCA-ARCHITECTS.COM

ARCHITECT

CONSULTANT

PROJECT TITLE

CATHOLIC CHARITIES

ALBUQUERQUE
NEW MEXICO

REVISIONS:

1	1/25/16	TCL COMMENTS
MK	DATE	DESCRIPTION

DRAWN BY: CHECKED BY:

DP	BC
----	----

PROJECT NUMBER:

A14.23

DATE:

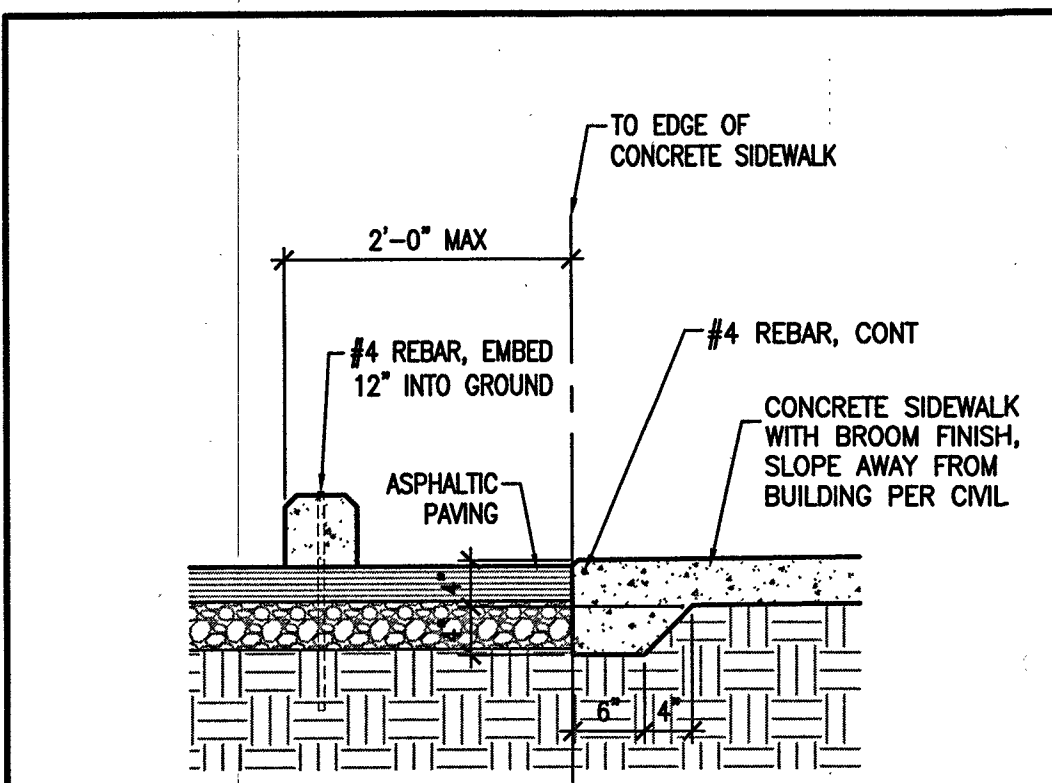
JANUARY 7, 2016

SHEET TITLE:

TRAFFIC CIRCULATION LAYOUT AND SITE DIMENSION PLAN

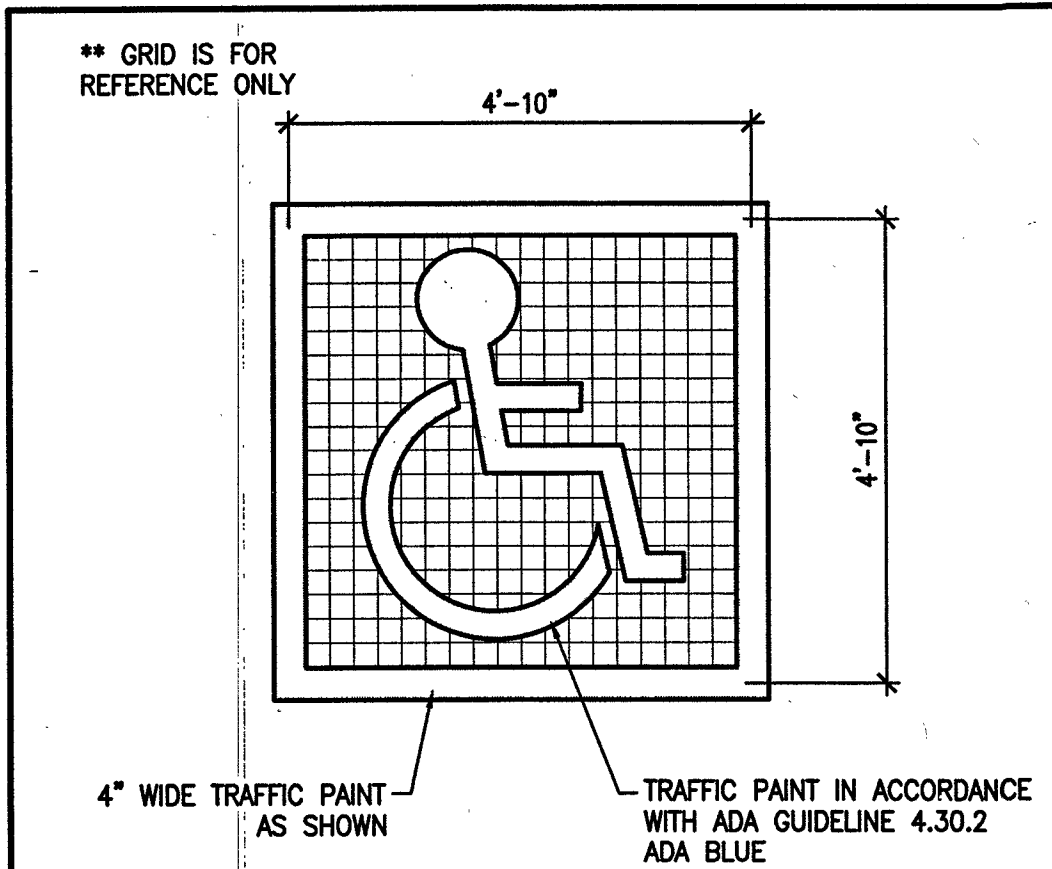
SHEET NO.:

AS-201



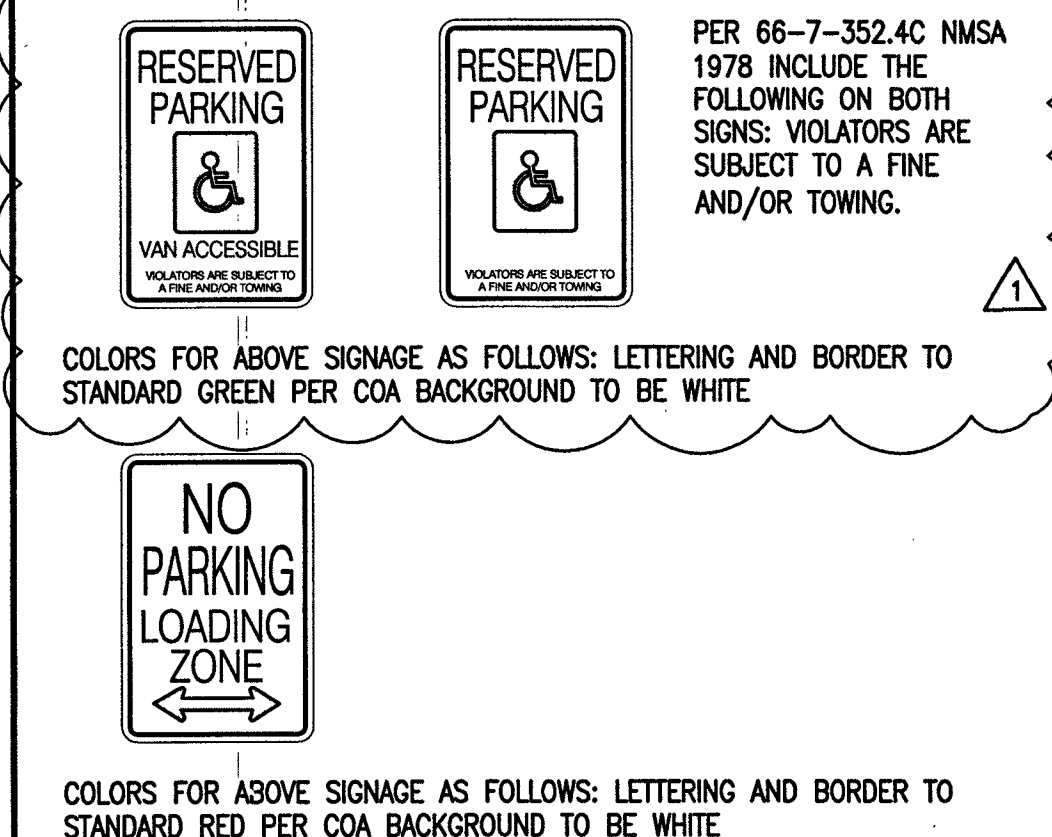
D1 PARKING BUMPER

SCALE: 3/4"=1'-0"



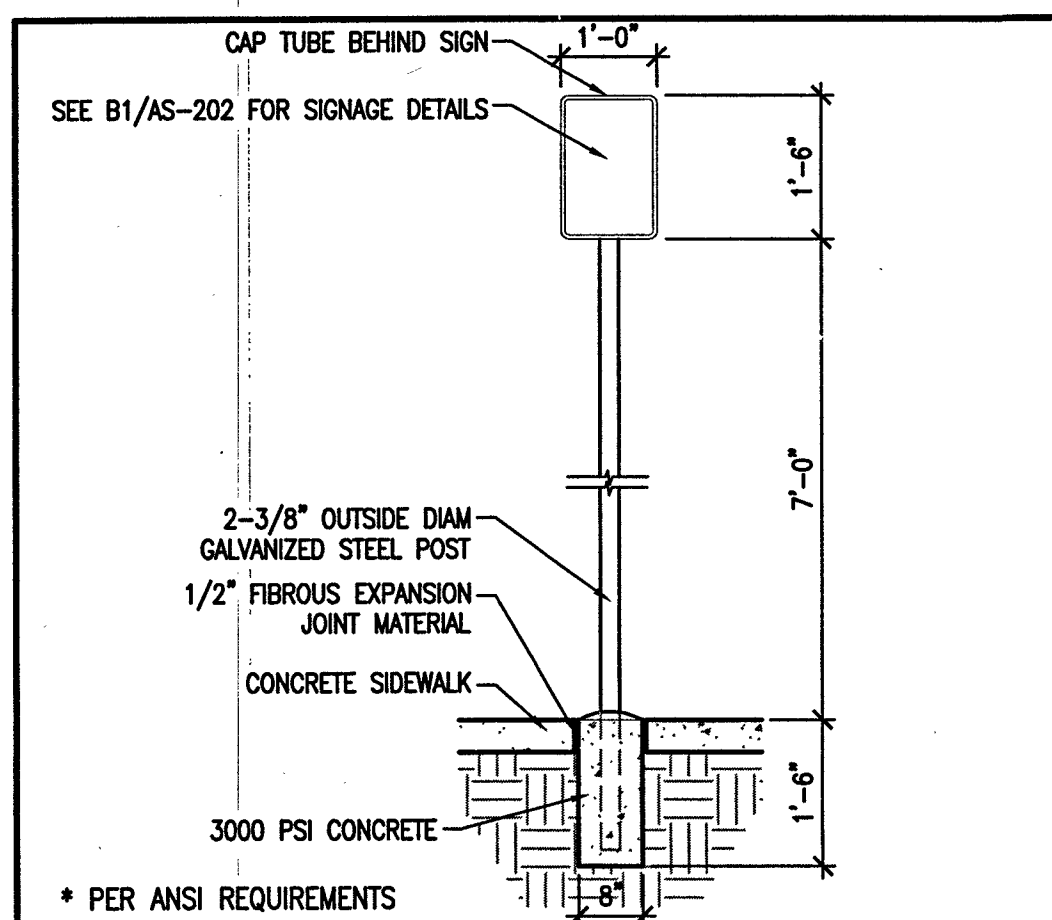
C1 ACCESSIBLE PARKING PAINTED SYMBOL

SCALE: 1/2"=1'-0"



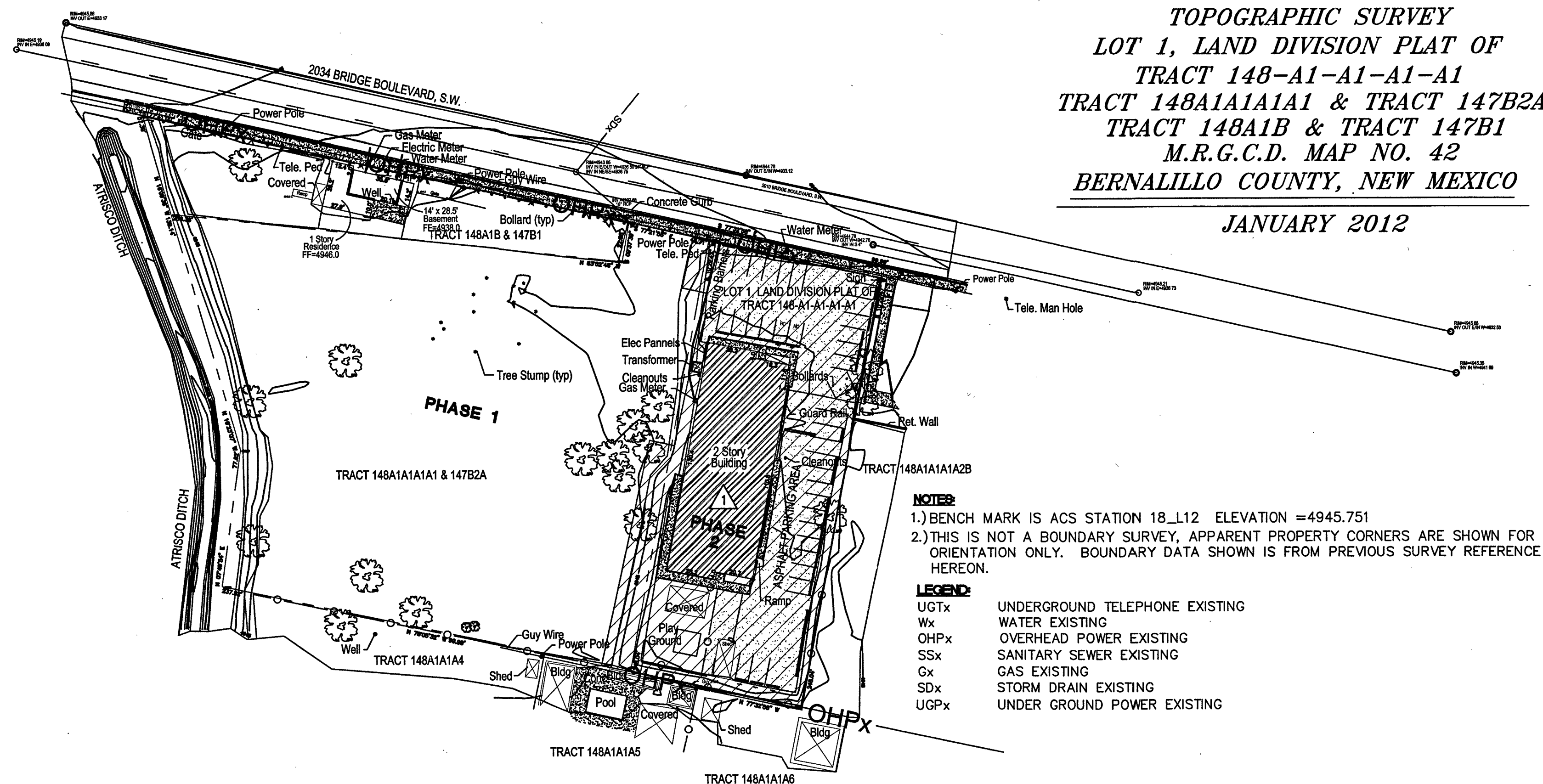
B1 PARKING SIGNAGE DETAILS

SCALE: 1/2"=1'-0"



A1 PARKING SIGNAGE

SCALE: 1/2"=1'-0"



TOPOGRAPHIC SURVEY
LOT 1, LAND DIVISION PLAT OF
TRACT 148-A1-A1-A1-A1
TRACT 148A1A1A1 & TRACT 147B2A
TRACT 148A1B & TRACT 147B1
M.R.G.C.D. MAP NO. 42
BERNALILLO COUNTY, NEW MEXICO

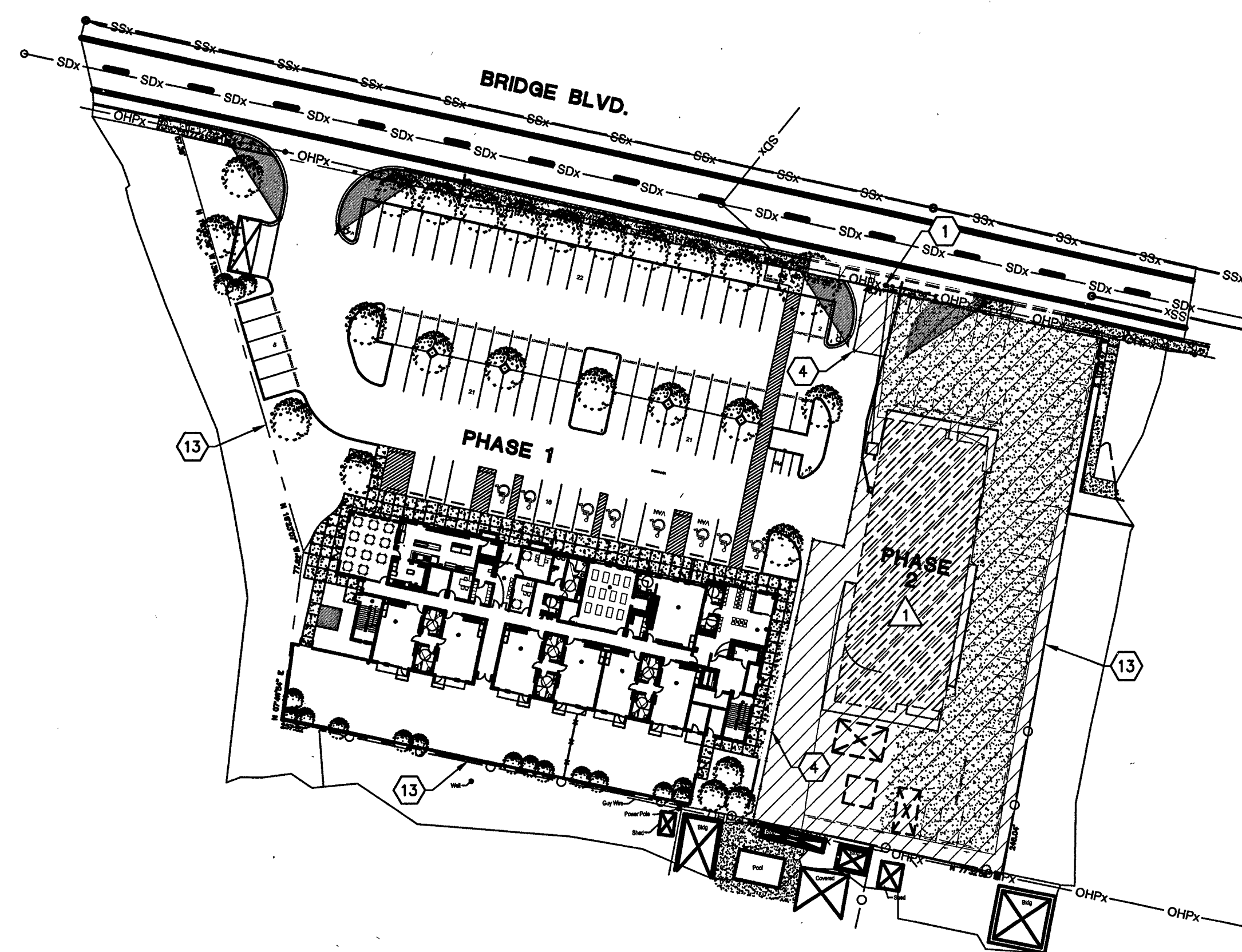
JANUARY 2012

NOTES:
1.) BENCH MARK IS ACS STATION 18.L12 ELEVATION = 4945.751
2.) THIS IS NOT A BOUNDARY SURVEY, APPARENT PROPERTY CORNERS ARE SHOWN FOR ORIENTATION ONLY. BOUNDARY DATA SHOWN IS FROM PREVIOUS SURVEY REFERENCE HEREON.

LEGEND:
UGTx UNDERGROUND TELEPHONE EXISTING
Wx WATER EXISTING
OHPx OVERHEAD POWER EXISTING
SSx SANITARY SEWER EXISTING
Gx GAS EXISTING
SDx STORM DRAIN EXISTING
UGPx UNDER GROUND POWER EXISTING

C2 SITE PLAN - EXISTING CONDITIONS

0 50' 100'
SCALE: 1" = 50'



A2 SITE PLAN - PHASING

0 50' 100'
SCALE: 1" = 50'

A4 ENLARGED SITE PLAN - DUMPSTER ENCLOSURE

0 4' 8' 16'
SCALE: 1/8" = 1'-0"

GENERAL NOTES

- PROJECT PHASING HAS BEEN IMPLEMENTED TO MAINTAIN ACCESS TO POWER ON-SITE. PHASE 2 WILL KEEP AN EXISTING POWER POLE AND ELECTRICAL CONNECTION TO THE EXISTING BUILDING. ONCE PHASE 1 IS COMPLETED PHASE 2 WILL BEGIN AND POWER WILL BE REROUTED TO THE SITE FROM A NEW POWER POLE.
- PHASE 1 PROJECT SCOPE: CONSTRUCTION OF NEW 3-STORY BUILDING (INCLUDING UTILITY CONNECTIONS) AND NORTH PARKING LOT.
- PHASE 2 PROJECT SCOPE: DEMOLITION OF EXISTING BUILDING AND EXISTING PARKING LOT. CONSTRUCTION OF EAST PARKING LOT.

KEYED NOTES

- EXISTING POWER POLE TO REMAIN DURING PHASE 1 CONSTRUCTION.
- EXISTING TRANSFORMER TO REMAIN DURING PHASE 1 CONSTRUCTION.
- EXISTING ELECTRIC PANELS TO REMAIN DURING PHASE 1 CONSTRUCTION.
- TEMPORARY SITE FENCING TO SEPARATE PHASE 1 AND PHASE 2 CONSTRUCTION.
- 6'-0" HIGH CMU WALL AT DUMPSTER ENCLOSURE, SEE STRUCTURAL DRAWINGS.
- 6" CONCRETE FILLED STEEL PIPE BOLLARD WITH MINIMUM 2'-0" EMBED.
- LANDSCAPED AREA, SEE LANDSCAPE DRAWINGS.
- 6" THICK CONCRETE APRON.
- 6" THICK CONCRETE SLAB, SLOPE TO DRAIN 1/8" PER FOOT.
- SITE DRAIN.
- ASPHALT PAVING, SEE CIVIL DRAWINGS.
- PROPOSED 3-STORY BUILDING.
- PROPERTY LINE.
- CURB AND GUTTER, SEE CIVIL DRAWINGS.
- PLANTER CURB, SEE CIVIL DRAWINGS.

NCA
ARCHITECTS - PLANNERS - AIA

1306 RIO GRANDE BLVD NW
ALBUQUERQUE, NM 87104
505-255-6400 505-268-6954 FAX
WWW.NCA-ARCHITECTS.COM

ARCHITECT

STATE OF NEW MEXICO
ROBERT SALVANI
NO. 1055
7.2.10

CONSULTANT

PROJECT TITLE

Catholic Charities
CATHOLIC CHARITIES

ALBUQUERQUE
NEW MEXICO

REVISIONS:

1 1/25/16 TCL COMMENTS
MK DATE DESCRIPTION

DRAWN BY: CHECKED BY:
DP BC

PROJECT NUMBER:
A14.23

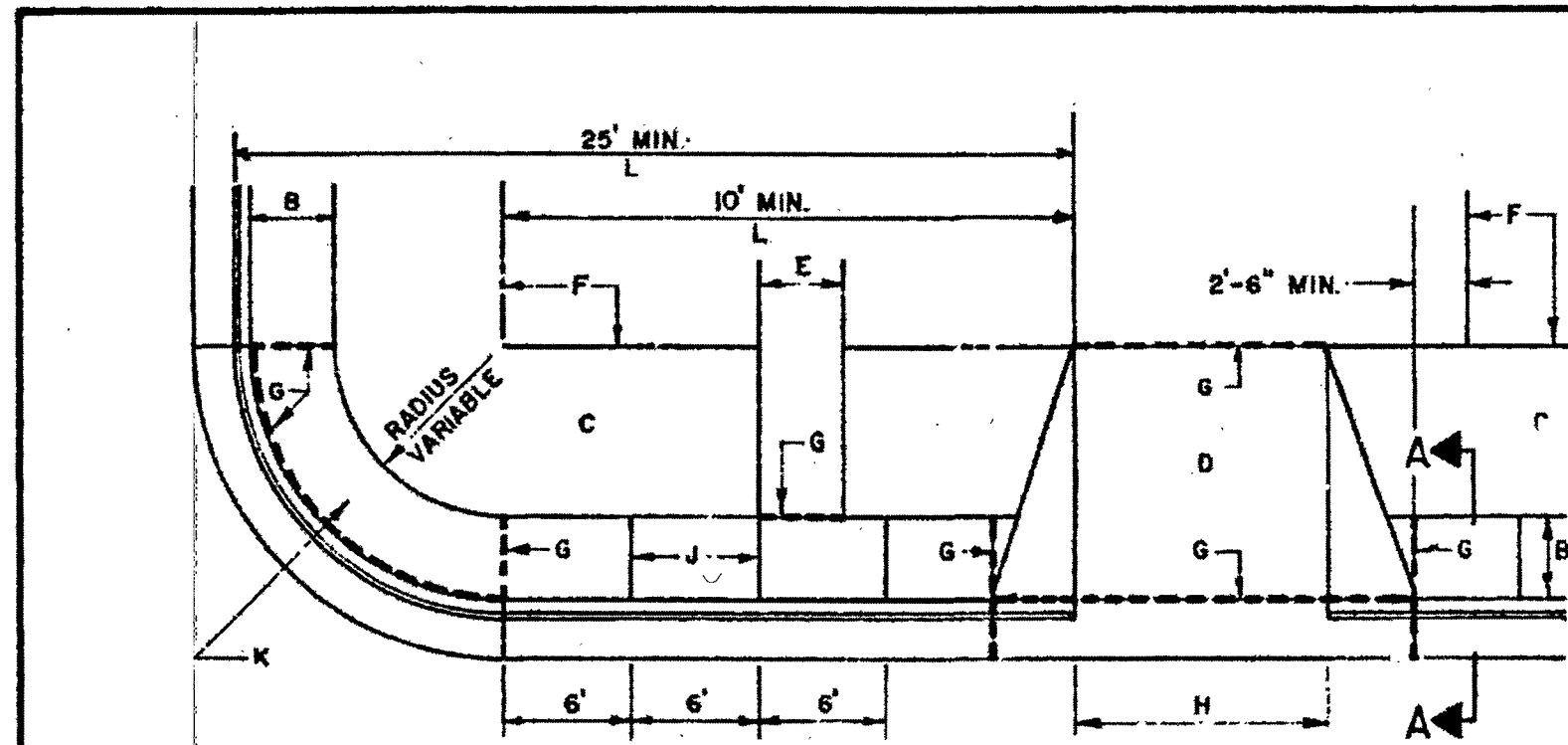
DATE:
JANUARY 7, 2016

SHEET TITLE:

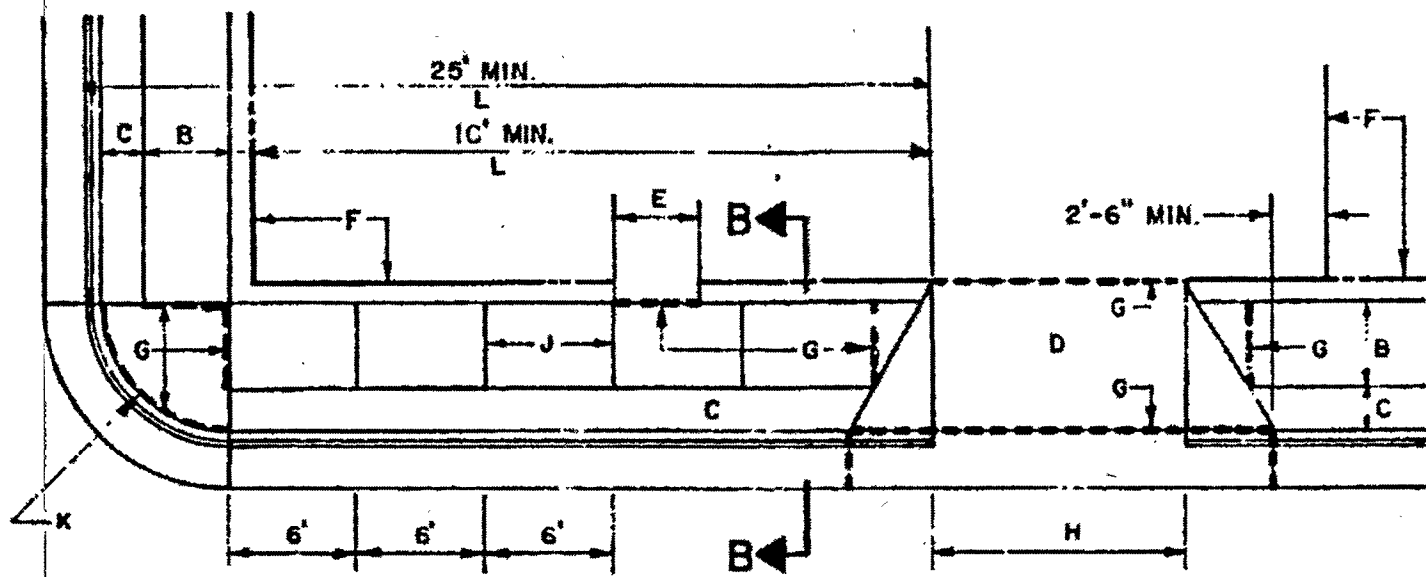
ARCHITECTURAL
SITE
PHASING PLAN

SHEET NO:

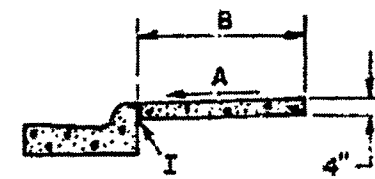
AS-202



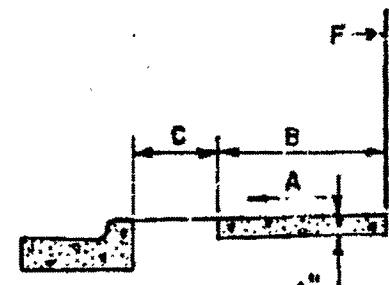
PLAN
CURB TYPE SIDEWALK



PLAN
OFFSET TYPE SIDEWALK



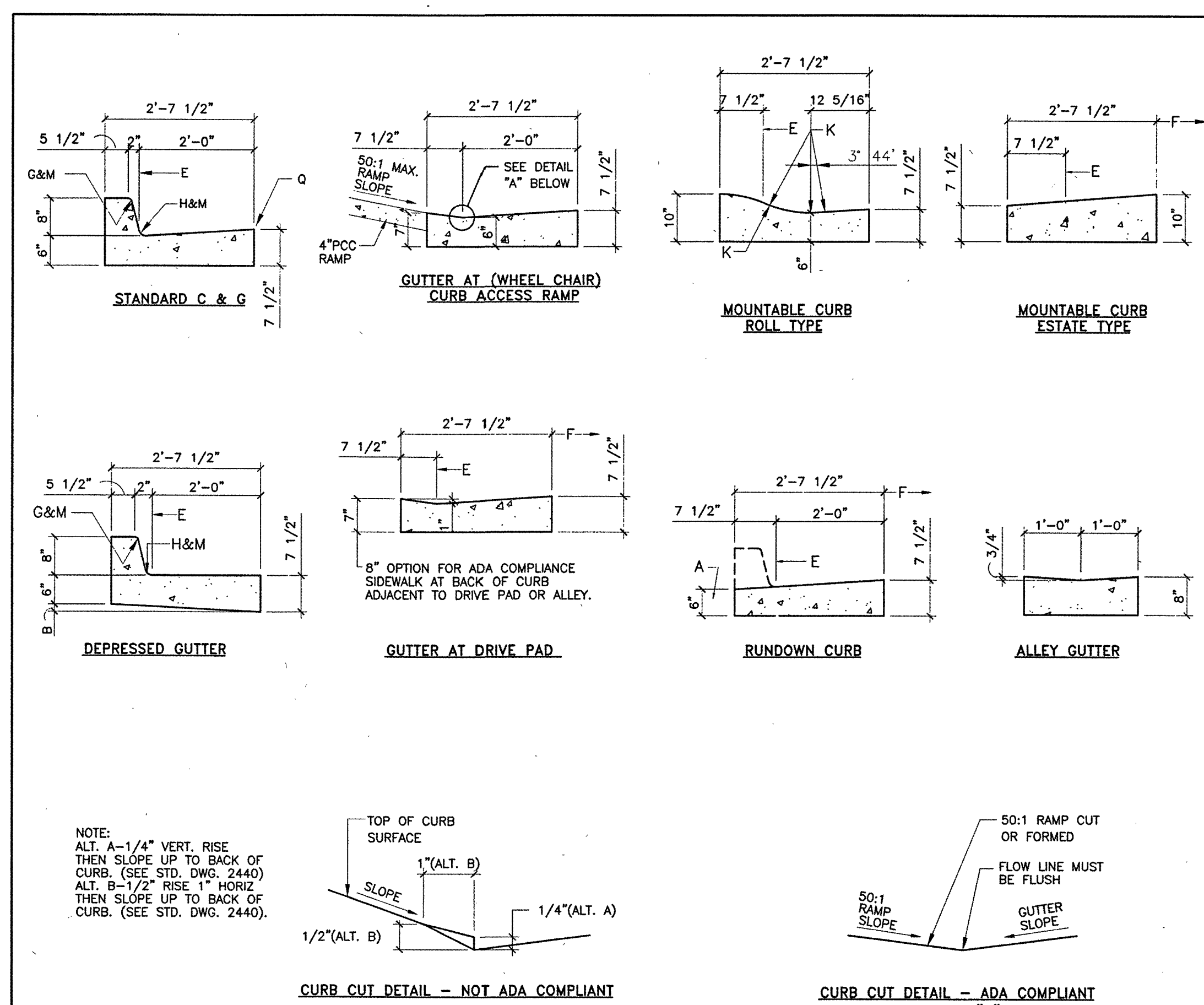
SECTION A-A



SECTION B-B

- GENERAL NOTES**
- DEVIATIONS FROM THESE STANDARDS SHALL BE SUBMITTED TO THE CITY ENGINEER AND/OR CITY TRAFFIC ENGINEER FOR APPROVAL PRIOR TO CONSTRUCTION.
 - SUBGRADE UNDER SIDEWALKS AND DRIVEPADS SHALL BE COMPACTED IN ACCORDANCE WITH SECTION 301.
- CONSTRUCTION NOTES**
- SLOPE 1(VERTICAL) TO 50(HORIZONTAL).
 - SIDEWALK WIDTHS SHALL BE IN ACCORDANCE WITH CHAPTER 23 OF THE DEVELOPMENT PROCESS MANUAL.
 - SETBACK TO BE DETERMINED BY AVAILABLE RIGHT-OF-WAY. SEE CHAPTER 23 OF DEVELOPMENT PROCESS MANUAL.
 - SEE DRIVEPAD DETAIL, DWG 2425.
 - WALKWAY VARIABLE.
 - PROPERTY LINE.
 - 8" EXPANSION JOINTS WHERE SIDEWALK OR DRIVEPAD ADJUTS BUILDINGS, FENCES, WALLS OR OTHER IMMOVABLE OBJECTS.
 - 12 FT. MIN. 22 FT. MAX. - RESIDENTIAL.
12 FT. MIN., 25 FT. MAX. - LIGHT COMMERCIAL.
20 FT. MIN., 35 FT. MAX. - HEAVY COMMERCIAL.
 - CONTRACTION JOINTS.
 - FOR CURB ACCESS RAMPS, SEE DWGS 2440 & 2441.
 - CHECK DIMENSION FROM BOTH PROPERTY LINE AND FLOW LINE. USE 1W AREAS WHERE DRIVEPAD IS FARTHEST FROM INTERSECTION.

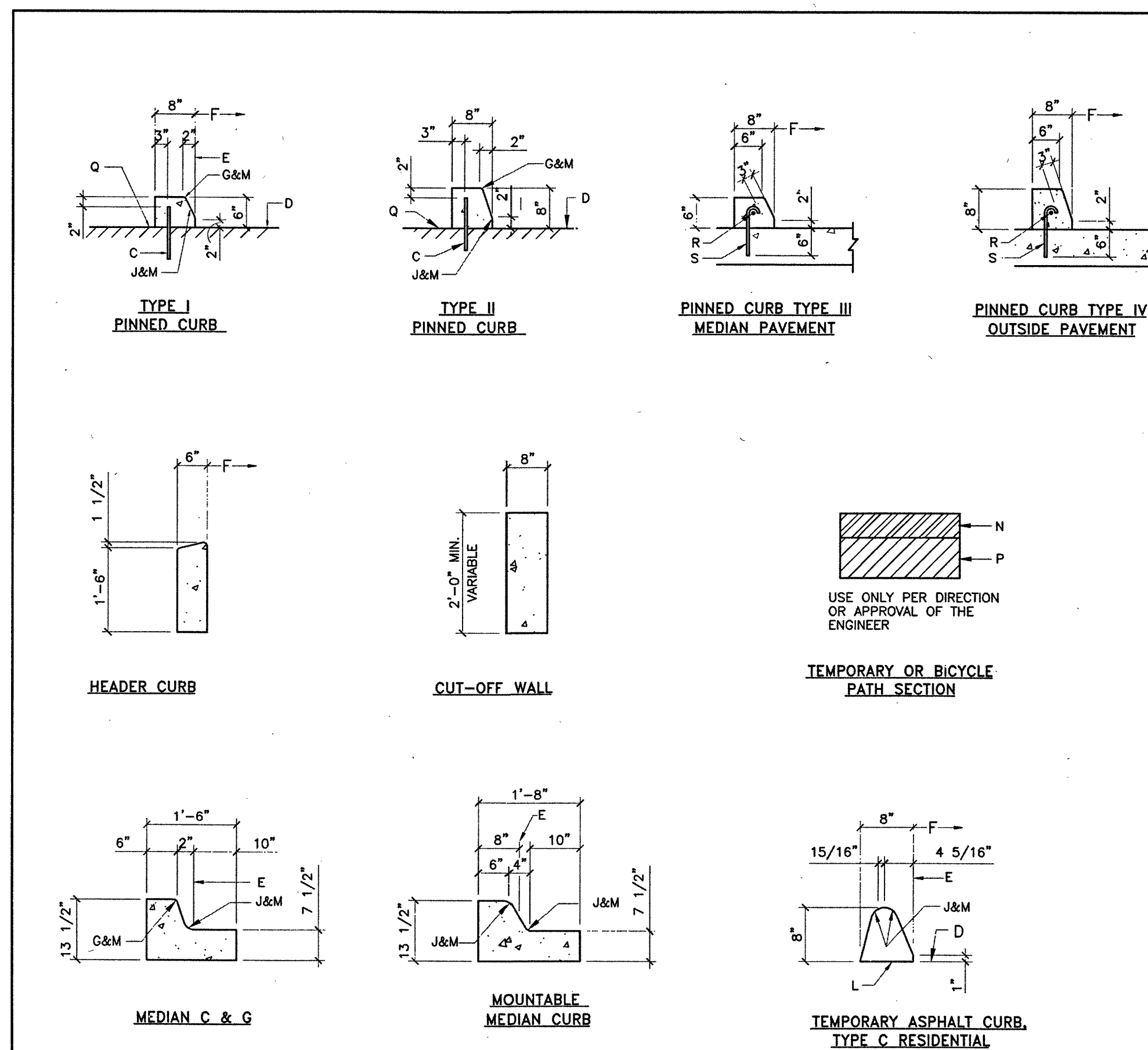
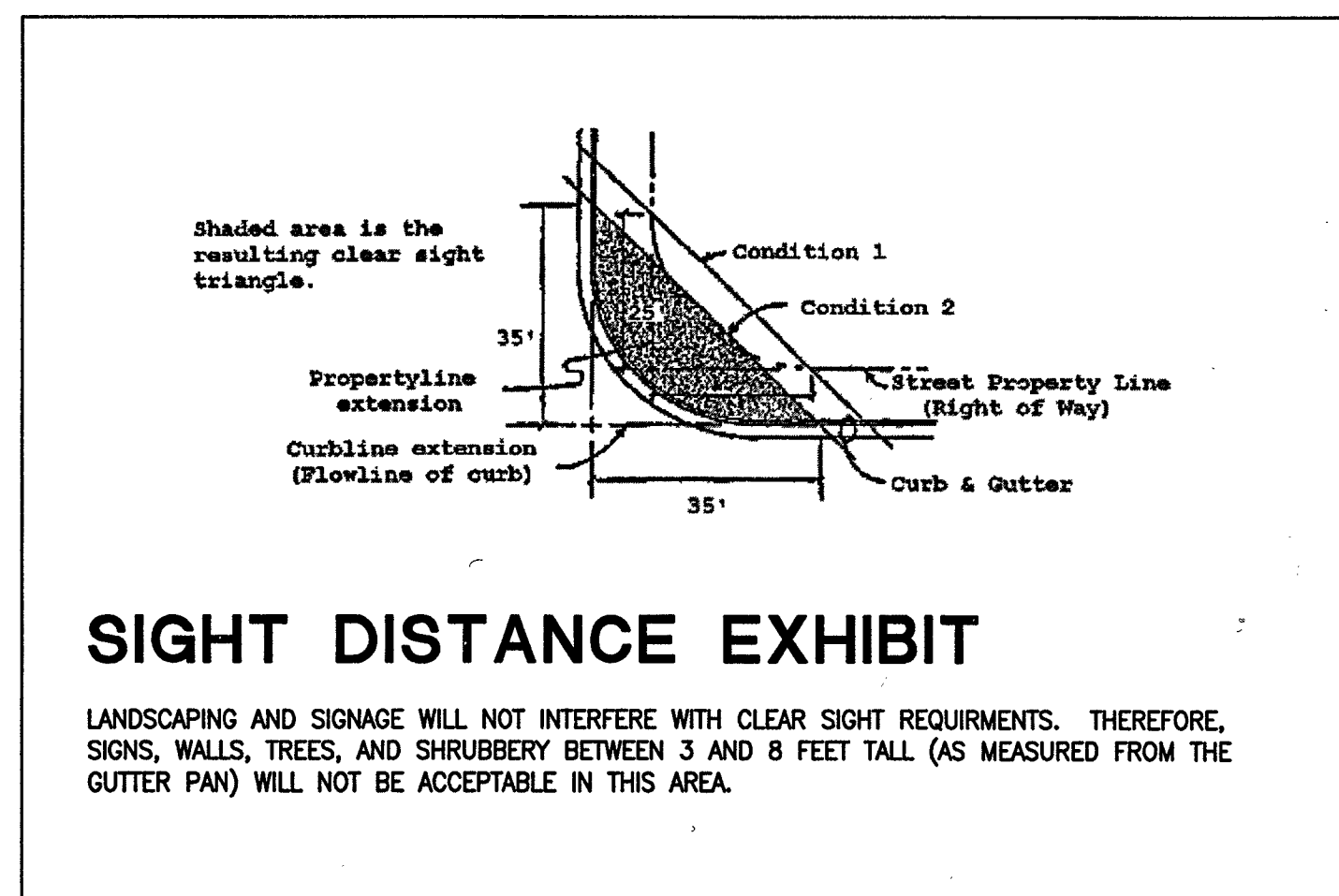
REVISIONS	CITY OF ALBUQUERQUE
11/14/91	PAVING
4/12/94	SIDEWALK DETAILS
	DWG. 2430
	AUG. 1984



- GENERAL NOTES:**
- CURB, GUTTER AND CUT-OFF WALL WILL BE CONSTRUCTED OF PORTLAND CEMENT CONCRETE (PCC).
 - FOR STANDARD AND MEDIAN C&G ADJACENT TO ASPHALT CONCRETE (AC) PAVEMENT, PROVIDE CONTRACTION JOINTS AT 12' MAX. SPACING. CONTRACTION JOINTS SHALL BE EITHER SAWED OR TOOLED A MINIMUM OF 1" DEEP AT FINISHED FACES. 1/2" EXPANSION JOINTS TO BE INSTALLED AT CURB RETURNS AND AT A MAXIMUM SPACING OF 200' BETWEEN CURB RETURNS AND SEPARATELY CONSTRUCTED DRIVEWAYS.
 - FOR ALL OTHER C & G CUT-OFF WALL PROVIDE CONTRACTION JOINTS AT 10' MAX SPACING, 1/2" EXP. JTS. AT CURB RETURNS & AT A MAXIMUM SPACING OF 100' BETWEEN CURB RETURNS & EACH SIDE OF SEPARATELY CONSTRUCTED DRIVEWAYS. CONTRACTION JOINTS SHALL BE EITHER SAWED OR TOOLED A MINIMUM OF 1" DEEP AT ALL FINISHED FACES. REINFORCEMENT SHALL NOT BE USED IN CUT-OFF WALLS.
 - FOR C & G CONSTRUCTED WITH PCC PAVEMENT, CONTRACTION JOINTS AND EXPANSION JOINTS SHALL BE THE SAME AS THE PAVEMENT JOINTS.
 - ALL EDGES SHALL BE EDGED WITH A 3/8" RADIUS EDGING TOOL.
 - STANDARD C & G SHALL BE USED FOR NEW CONSTRUCTION UNLESS OTHERWISE AUTHORIZED BY THE CITY ENGINEER.
 - REMOVE & REPLACE PAVEMENT 1" WIDE ADJACENT TO LIP OF GUTTER WHEN CONSTRUCTING C & G ADJACENT TO EXISTING AC PAVEMENT.
 - 1/4" ISOLATION JOINT SHALL BE PLACED BETWEEN SIDEWALK AND C & G WHEN CAST ADJACENT TO EACH OTHER.
 - ADA = AMERICANS WITH DISABILITY ACT.

CONSTRUCTION NOTES:
SEE COA DRAWING 2415B

REVISIONS	CITY OF ALBUQUERQUE
9/91	PAVING
11/14/91	CURB AND GUTTER &
12/15/92	CURB CUT DETAILS
3/30/94	DWG. 2415A
	JANUARY 2003



- CONSTRUCTION NOTES**
- REQ. CONC. CHANNEL LINING, OR CUT-OFF WALL, PROVIDE 1/4" EXP JOINT BETWEEN BACK OF CURB & CHANNEL LINING AND/OR WALL.
 - VARIABLE, DEPRESS AS NEEDED.
 - DRIVE NO. 4 PINS 18" DEEP IN HOLES DRILLED @ 2" O.C. IN EXISTING PAVEMENT, SEAL WITH EPOXY.
 - EXISTING ASPHALT CONCRETE (AC) OR PORTLAND CEMENT CONCRETE (PCC) PAVEMENT.
 - THEORETICAL FACE OF CURB OR FLOWLINE.
 - TRAFFIC SIDE.
 - 3/4" RADIUS.
 - 1-1/2" RADIUS.
 - 2" RADIUS.
 - 24" RADIUS.
 - TACK COAT.
 - DIMENSIONS AT ROUNDED CORNERS MEASURED TO INTERSECTION OF STRAIGHT LINES.
 - 4" AC: MAJOR LOCAL OR BETTER (SP-III)
3" AC: LOCAL RESIDENTIAL STREET (TYPE C)
2" AC: BICYCLE PATH (TYPE B, RESIDENTIAL)
 - 8" SCARIFIED AND COMPACTED SUBGRADE. 95% MINIMUM COMPACTION PER SECTION 301.
 - AC PAVEMENT.
 - #4 CONT. BETWEEN JOINTS 3" COVER AT JOINTS.
 - #3 PINS @ 3'-0" O.C. W/STD. HOOK.

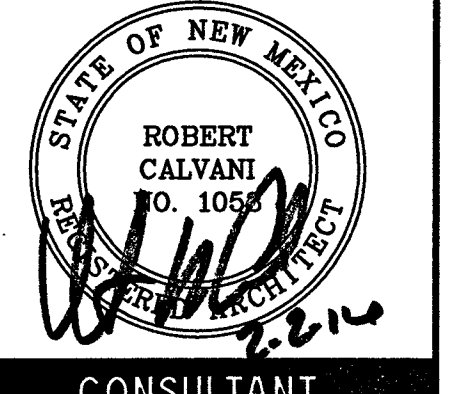
GENERAL NOTES
SEE COA DRAWING 2415A

REVISIONS	CITY OF ALBUQUERQUE
9/91	PAVING
11/14/91	CURB AND GUTTER &
12/15/92	TEMPORARY PAVING SECTION
3/30/94	DWG. 2415B
	JANUARY 2003

NCA
ARCHITECTS - PLANNERS - AIA

1308 RIO GRANDE BLVD NW
ALBUQUERQUE, NM 87104
505-255-6400 505-268-6954 FAX
WWW.NCA-ARCHITECTS.COM

ARCHITECT



PROJECT TITLE

Catholic Charities
CATHOLIC CHARITIES

ALBUQUERQUE
NEW MEXICO

REVISIONS:

1	1/25/16	TCL COMMENTS
MK	DATE	DESCRIPTION

DRAWN BY: CHECKED BY:

LW DP

PROJECT NUMBER:

A14.23

DATE:

JANUARY 7, 2016

SHEET TITLE:

REFERENCE
DETAILS

SHEET NO:

AS-203