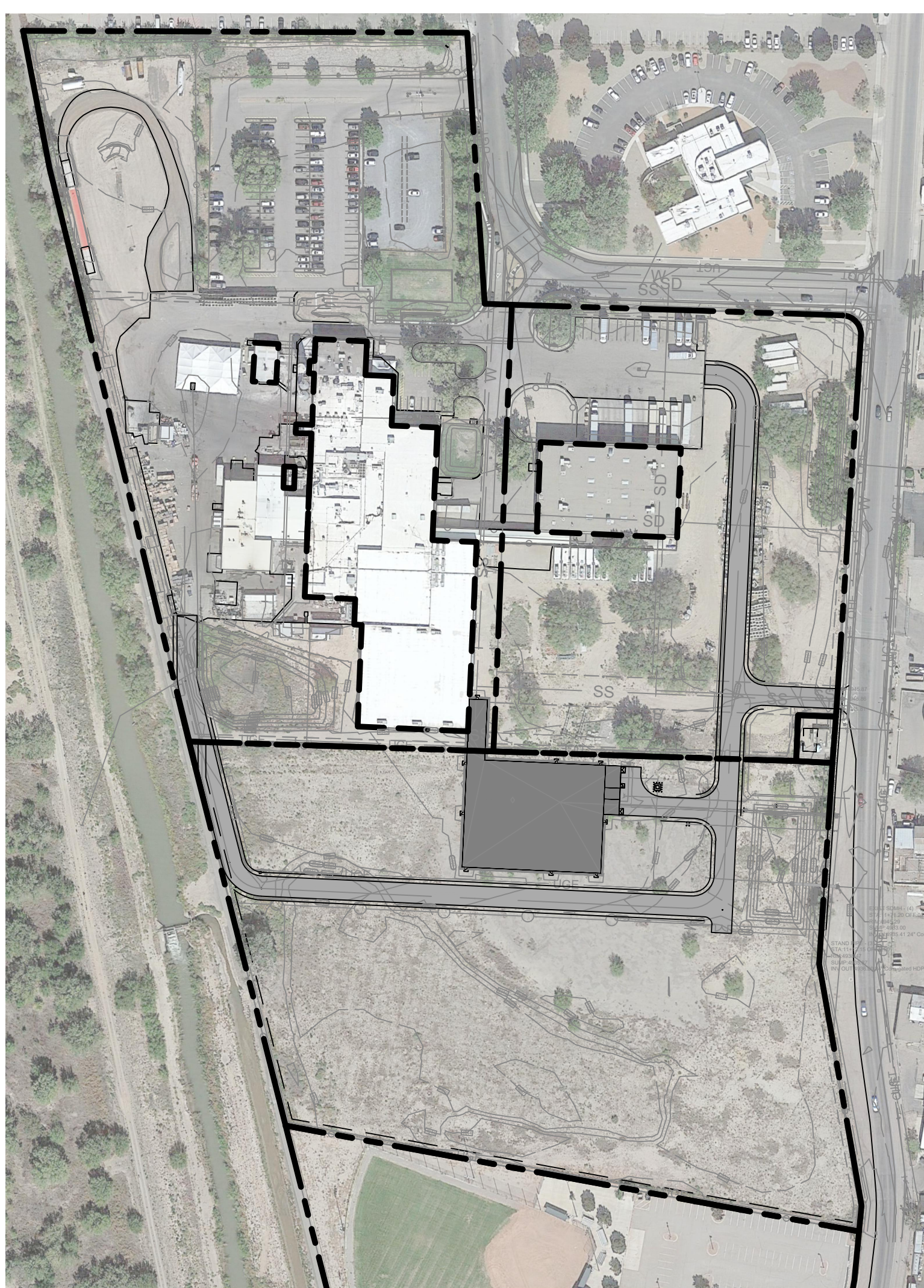


A1 LANDSCAPE PLAN  
SCALE: 1"=40'-0"



A1 KEY MAP  
SCALE: 1"=150'-0"



GENERAL LANDSCAPE NOTES

**IRRIGATION**  
IRRIGATION SYSTEM STANDARDS OUTLINED IN THE WATER CONSERVATION LANDSCAPING AND WATER WASTE ORDINANCE SHALL BE STRICTLY ADHERED TO. A FULLY AUTOMATED IRRIGATION SYSTEM WILL BE USED TO IRRIGATE TREE, SHRUB AND GROUND COVER PLANTING AREAS. THE IRRIGATION SYSTEM SHALL BE DESIGNED TO ISOLATE PLANT MATERIAL ACCORDING TO SOLAR EXPOSURE AND WILL BE SET UP BY PLANT ZONES ACCORDING TO WATER REQUIREMENTS. THE TREES WILL BE PROVIDED WITH (6) 2 GPH EMITTERS, WITH THE ABILITY TO BE EXPANDED TO ACCOMMODATE THE GROWTH OF THE TREE. SHRUBS AND GROUND COVERS WILL BE PROVIDED WITH (2) 1 GPH EMITTERS. TREES, SHRUBS AND GROUND COVERS WILL BE GROUPED ON THE SAME VALVE.

**RESPONSIBILITY OF MAINTENANCE**  
MAINTENANCE OF ALL PLANTING AND IRRIGATION, INCLUDING THOSE WITHIN THE PUBLIC R.O.W., SHALL BE THE RESPONSIBILITY OF THE PROPERTY OWNER.

**METHOD FOR COMPLYING WITH WATER CONSERVATION ORDINANCE**  
THE PLANT PALETTE IS PREDOMINANTLY COMPRISED OF PLANTS WITH LOW TO MEDIUM WATER USE REQUIREMENTS, THEREBY MINIMIZING IRRIGATION NEEDS WHILE ENSURING THE VIABILITY OF THE PLANTS.

**PNM COORDINATION**  
COORDINATION WITH PNM'S NEW SERVICE DELIVERY DEPARTMENT IS NECESSARY REGARDING PROPOSED TREE LOCATION AND HEIGHT, SIGN LOCATION AND HEIGHT, AND LIGHTING HEIGHT IN ORDER TO ENSURE SUFFICIENT SAFETY CLEARANCES.

SCREENING WILL BE DESIGNED TO ALLOW FOR ACCESS TO ELECTRIC UTILITIES. IT IS NECESSARY TO PROVIDE ADEQUATE CLEARANCE OF TEN FEET IN FRONT AND AT LEAST 5 FEET ON THE REMAINING THREE SIDES SURROUNDING ALL GROUND-MOUNTED EQUIPMENT FOR SAFE OPERATION, MAINTENANCE AND REPAIR PURPOSES.

**CLEAR SIGHT DISTANCE:**  
LANDSCAPING AND SIGNAGE WILL NOT INTERFERE WITH CLEAR SIGHT REQUIREMENTS. THEREFORE, SIGNS, WALLS, TREES, AND SHRUBBERY BETWEEN 3 AND 8 FEET TALL (AS MEASURED FROM THE GUTTER PAN) WILL NOT BE ACCEPTABLE IN THE AREA.

LANDSCAPE AREA COVERAGE	
TOTAL SITE AREA (3.91 AC.):	170,102 SF
BUILDING AREA:	- 28,289 SF
NET AREA	141,813 SF

REQUIRED LANDSCAPE AREA (15% OF NET AREA):	21,272 SF
PROVIDED LANDSCAPE AREA	
PROPOSED LANDSCAPE (EXCLUDING FOOD SAFETY ZONE, PONDING AREA AND REVEGETATION AREAS)	21,278 SF (15%)

**LANDSCAPE LIVE VEGETATIVE COVERAGE**  
LANDSCAPE COVERAGE REQUIREMENTS SPECIFY TREE CANOPIES AND GROUND-LEVEL PLANTS SHALL COVER A MINIMUM OF 75%. A MINIMUM OF 25% SHALL BE PROVIDED AS GROUND-LEVEL PLANTS (SHRUBS, GRASSES, ETC.) OF THE REQUIRED VEGETATIVE COVERAGE.

REQUIRED LIVE VEGETATIVE MATERIAL COVERAGE (75%)	15,959 SF
PROVIDED LIVE VEGETATIVE MATERIAL COVERAGE (76%)	16,194 SF
REQUIRED GROUND-LEVEL PLANT COVERAGE (25%)	3,990 SF
PROVIDED GROUND-LEVEL PLANT COVERAGE (25%)	4,026 SF

**STREET TREES**  
STREET TREE REQUIREMENTS SPECIFY THE SPACING BETWEEN STREET TREES, WITHIN THE PUBLIC RIGHT-OF-WAY, SHALL BE INSTALLED AT A FREQUENCY OF 30 FEET PER LINEAR FOOT OF STREET FRONTAGE. NEW STREET TREES SHALL BE PLANTED ALONG 2ND STREET.

2ND STREET: 217 LF / 30 FEET PER TREE =	
- REQUIRED TREES: 7	
- PROVIDED: 8 TREES	

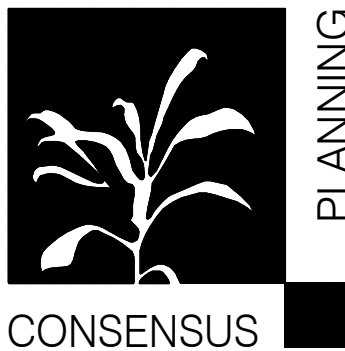
PLANT LEGEND

QTY.	SYMBOL	SCIENTIFIC NAME COMMON NAME (WATER USE)	SIZE	MATURE SIZE
<b>TREES</b>				
5		CHILOPSIS LINEARIS DESERT WILLOW 'BUBBA' (RW)	24"-BOX	20' HT. X 25' SPR.
4		FRAXINUS ANGUSTIFOLIA OXYCARPA RAYWOOD ASH (M)	2.5" B&B	35' HT. X 25' SPR.
2		PINUS NIGRA AUSTRIAN PINE (M)	6' HT.	35' HT. X 25' SPR.
14		FRAXINUS ANGUSTIFOLIA OXYCARPA RAYWOOD ASH (M+)	2.5" B&B	35' HT. X 25' SPR.
<b>SHRUBS AND GROUND COVERS</b>				
40		CARYOPTERIS CLANDONENSIS DARK KNIGHT BLUE MIST SPIREA (M)	5-GAL	3' HT. X 4' SPR.
40		RHUS TRILOBATA THREE-LEAF SUMAC (L)	5-GAL	6' HT. X 6' SPR.
30		SPOROBOLUS WRIGHTII GIANT SACATON (L)	5-GAL	5' HT. X 5' SPR.
23		PYRACANTHA COCCINEA FIRETHORN (M)	5-GAL	10' HT X 10' SPR.
<b>MULCHES AND BOULDERS</b>				
21,278 SF		3/8" AMARETTO BROWN CRUSHED GRAVEL 3" DEPTH OVER FILTER FABRIC WITH STEEL EDGING		
76,413 SF		REVEGETATION AREAS SHALL BE HYDROMULCH APPLICATION PER COA SPECIFICATION SECTION 1012. LIMITS OF RE-VEGETATED SEEDING SHOWN ON PLANS IS SCHEMATIC. CONTRACTOR SHALL APPLY REVEGETATED SEED TO LIMIT OF DISTURBANCE. SANDY SOILS MIX (20 LBS. PLS PER ACRE TOTAL)		
12,696 SF		REVEGETATIVE SEEDING WITH 1"-4" ROCK OVER DIRT		

NOTE: POND TREATMENT TO COMPLY WITH EPA CGP 2.2.14b

GENERAL LANDSCAPE NOTES

- PRIOR TO BEGINNING WORK ON THE PROJECT, THE LANDSCAPE CONTRACTOR SHALL REVIEW THE PROJECT IN THE FIELD WITH THE OWNER'S REPRESENTATIVE. IF DISCREPANCIES OCCUR BETWEEN THE DRAWINGS AND THE SITE, THE LANDSCAPE CONTRACTOR SHALL NOTIFY THE OWNER'S REPRESENTATIVE FOR CLARIFICATION PRIOR TO PROCEEDING ON THAT PORTION OF WORK.
- IT IS THE LANDSCAPE CONTRACTOR'S RESPONSIBILITY TO LOCATE ALL UNDERGROUND UTILITIES PRIOR TO COMMENCEMENT OF PLANTING OPERATIONS.
- ALL PLANTING AREAS ARE TO HAVE WEEDS AND COMPETITIVE VEGETATION REMOVED PRIOR TO PREPARATION FOR PLANTING.
- THE OWNER'S REPRESENTATIVE SHALL APPROVE ALL PLANT MATERIAL PRIOR TO PLANTING. IN ADDITION, THE OWNER REPRESENTATIVE RESERVES THE RIGHT TO REFUSE ANY PLANT MATERIAL DEEMED UNACCEPTABLE. THE OWNER'S REPRESENTATIVE IS TO APPROVE ANY AND ALL SUBSTITUTIONS.
- FILTER FABRIC TO BE DEWITT PRO-5 WEED CONTROL, OR EQUAL.
- PLANT QUANTITIES ARE PROVIDED FOR CONTRACTOR'S CONVENIENCE ONLY, PLANS SHALL TAKE PRECEDENCE.



Landscape Architecture  
Urban Design  
Planning Services

302 EIGHTH ST. NW  
Albuquerque, NM 87102  
Phone (505) 764-9801  
Fax (505) 842-5495

REVISIONS	
Description	
#	Date

Project Name: **BUENO FOODS**

ALBUQUERQUE, NEW MEXICO

Landscape Architect's Seal:  
  
EPC SUBMITTAL

Designed By: KP

Drawn By: KP

Checked By: CG

Date: 8/9/21

Project No:

Sheet Title:

LANDSCAPE  
PLAN  
  
L101