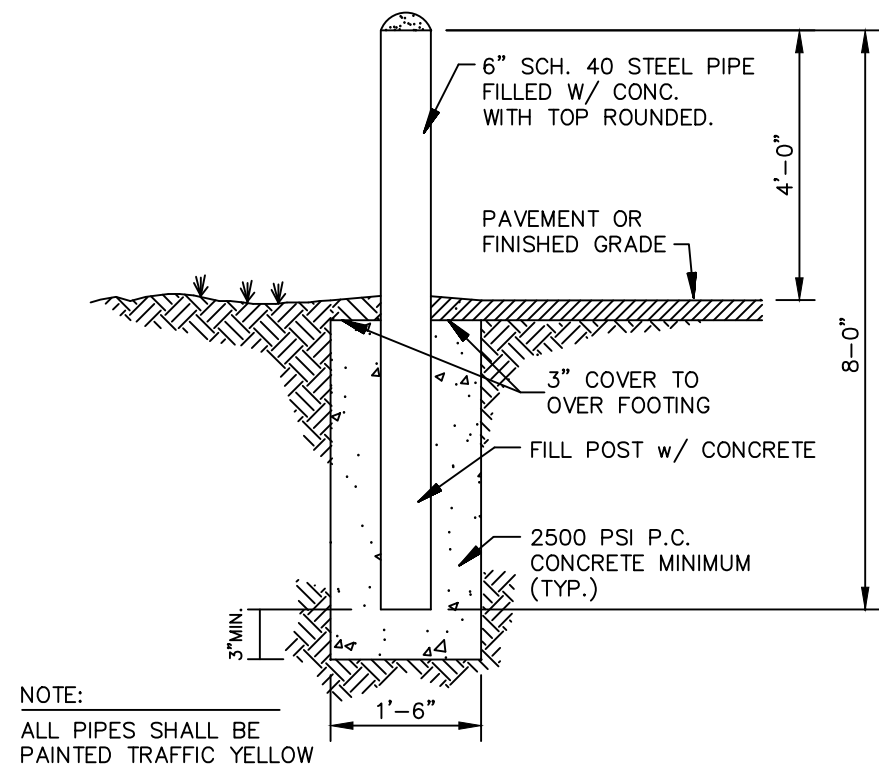


Notes:
1 Finish: Powder Coated - Color per Architect to Complement Building
2 Installation must be completed in accordance with specifications
3 For more product and company information please visit www.urbanracks.com

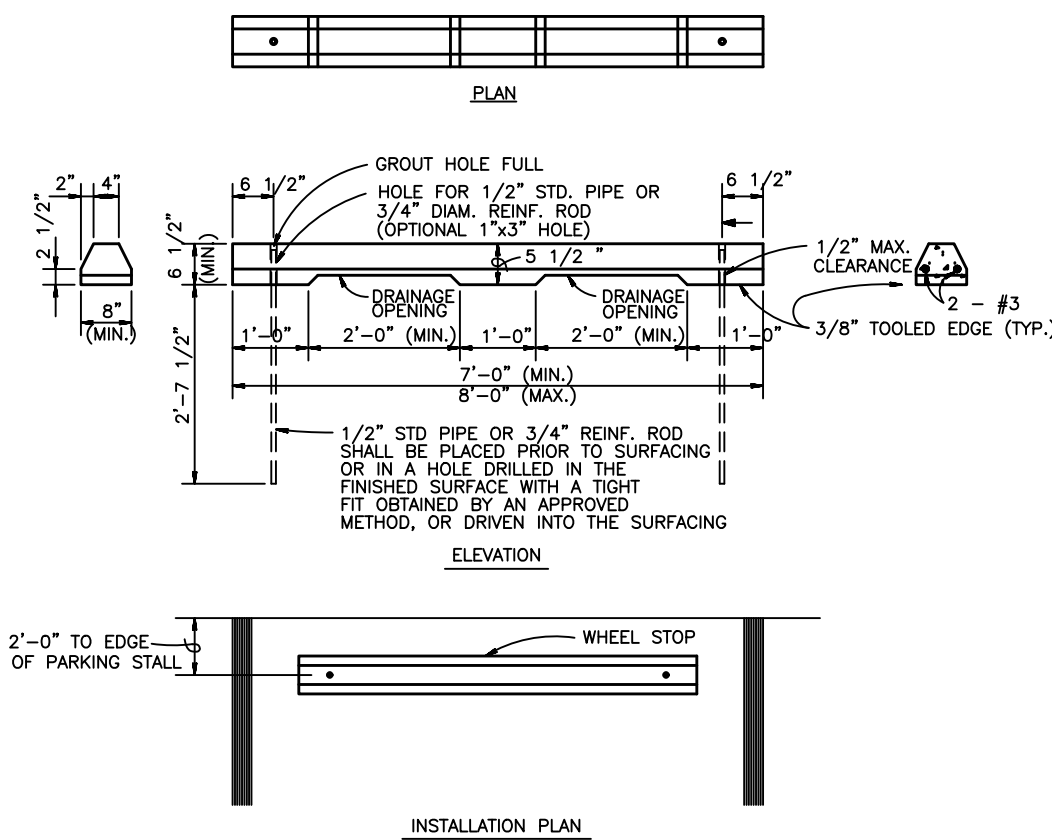
Urban Rack (UB-1000-STD)

NTS



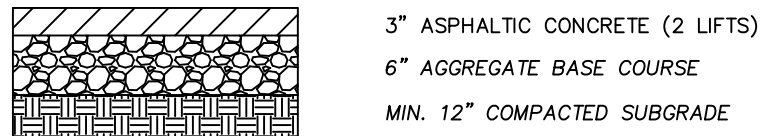
Pipe Bollard Detail

NTS



Precast Concrete Wheel Stop

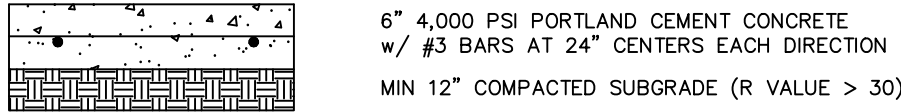
NTS



NOTES:
1. ASPHALT PAVEMENT, BASE COURSE, AND SUBGRADE SHALL MEET THE SPECIFICATIONS OF THE NMDOT 2014 SPECIFICATIONS FOR HIGHWAY AND BRIDGE CONSTRUCTION.
2. ASPHALT PAVEMENT SHALL BE SP-III PER NMDOT SPEC SECTION 423.
3. AGGREGATE BASE COURSE SHOULD BE TYPE 1 PER NMDOT SPEC SECTION 303.
4. SUBGRADE SHALL BE COMPACTED TO A MINIMUM OF 95% MAXIMUM DRY DENSITY AT OPTIMUM MOISTURE CONTENT (+/- 3%) AS DETERMINED BY ASTM D-1557.
5. ALL FILL BELOW SUBGRADE SHALL EXHIBIT A MINIMUM R-VALUE OF 45.

Asphalt Pavement Section

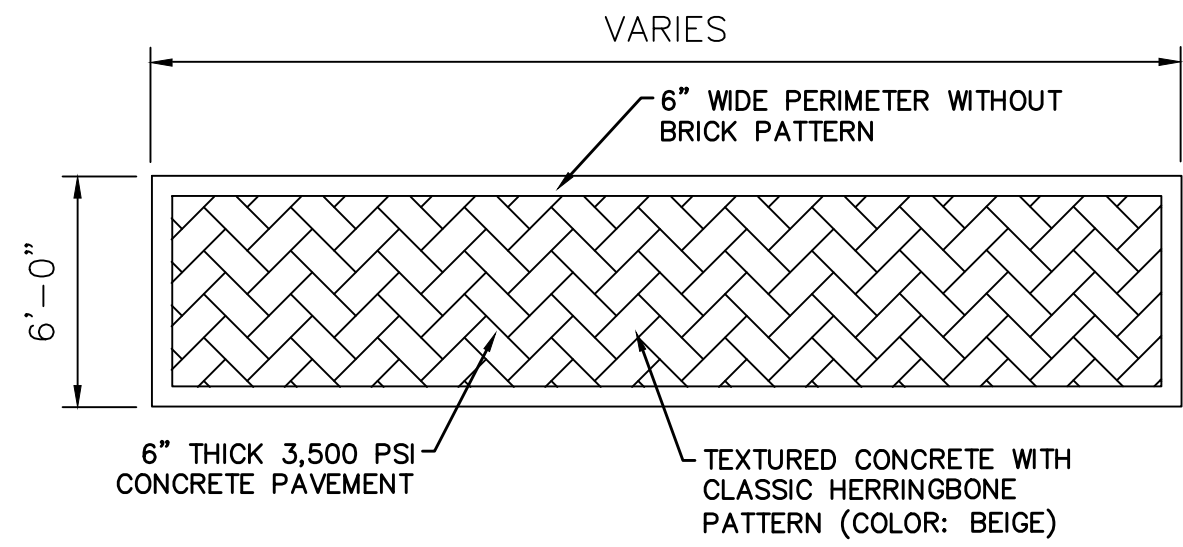
N.T.S.



NOTE: REFERENCE ACI 330R-01 "DESIGN AND CONSTRUCTION OF CONCRETE PARKING LOTS" FOR ADDITIONAL REQUIREMENTS OF CONSTRUCTION AND LOAD TRANSFER JOINT SPACING.

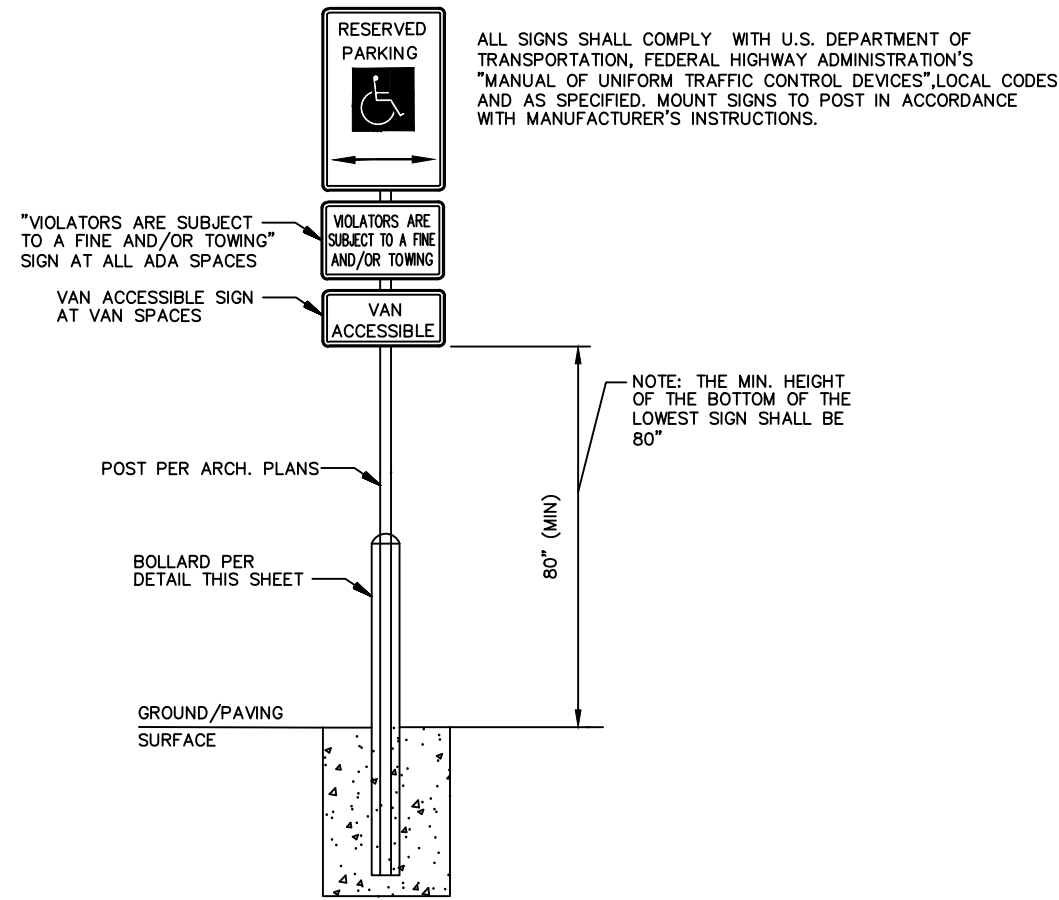
Concrete Pavement Section

N.T.S.



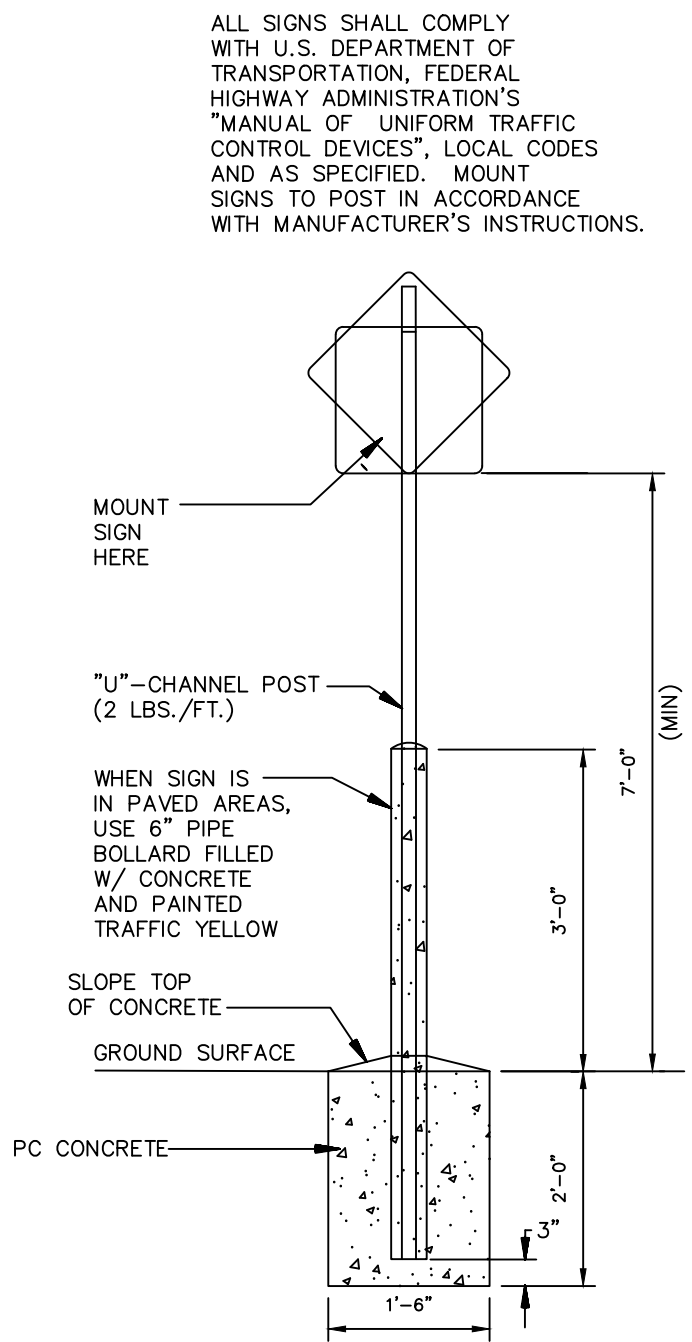
Textured Pavement Detail

NTS



H/C Sign Detail

NTS



Standard Sign Base

NTS



Wooten Engineering
1005 21st St SE, Suite 13
Rio Rancho, N.M. 87124
Phone: (505) 980-3560

NOTE: DRAWINGS ARE NOT TO SCALE IF SHEET IS PLOTTED ON 11" x 17"

THESE PLANS ARE CONFIDENTIAL PROPERTY OF INSPIRE BRANDS, UNDER RESTRICTED ACCESS.

dunkin'

ARCHIS ARCHITECTS
4700 LINCOLN RD NE, SUITE 102 D
ALBUQUERQUE, NEW MEXICO 87109
(505) 998-7717
www.archisarchitects.com



SET REVISIONS	NO	DESCRIPTION	DATE	SCALE	DRAWN	CKD	APPD
	1						
	2						
	3						
	4						
	5						
	6						
	7						
	8						
	9						

DUNKIN RESTAURANT 310 AVENIDA CESAR CHAVEZ SW ALBUQUERQUE NM. 87102	SITE DETAILS	
---	--------------	--

C1.2

04142023