

CITY OF ALBUQUERQUE



January 3, 2017

Richard J. Berry, Mayor

J. Graeme Means, P.E.
High Mesa Consulting Group
6010-B Midway Park Blvd SE
Albuquerque, NM 87102

**RE: Good 2 Go: Broadway
Grading Plan**
Engineer's Stamp Date 12-6-2016 (File: L14D022)

5 1-31-17

Dear Mr. Means:

Based upon the information provided in your submittal received 12-6-2016, the above referenced Grading Plan is approved for Building Permit.

Please attach a copy of this approved plan in the construction sets when submitting for the building permit. Prior to Certificate of Occupancy (CO) release, Engineer Certification per the DPM checklist will be required.

If you have any questions, you can contact me at 924-3986.

Sincerely,

Abiel Carrillo, P.E.
Principal Engineer, Planning Department
Development Review Services

MA/AC

PO Box 1293

Albuquerque

New Mexico 87103

www.cabq.gov

CITY OF ALBUQUERQUE



January 3, 2017

Richard J. Berry, Mayor

J. Graeme Means, P.E.
High Mesa Consulting Group
6010-B Midway Park Blvd SE
Albuquerque, NM 87102

**RE: Good 2 Go: Broadway
Grading Plan
Engineer's Stamp Date 12-6-2016 (File: L14D022)**

Dear Mr. Means:

Based upon the information provided in your submittal received 12-6-2016, the above referenced Grading Plan is approved for Building Permit.

Please attach a copy of this approved plan in the construction sets when submitting for the building permit. Prior to Certificate of Occupancy (CO) release, Engineer Certification per the DPM checklist will be required.

If you have any questions, you can contact me at 924-3986.

Sincerely,

Abiel Carrillo, P.E.
Principal Engineer, Planning Department
Development Review Services

MA/AC

PO Box 1293

Albuquerque

New Mexico 87103

www.cabq.gov



City of Albuquerque

Planning Department

Development & Building Services Division

DRAINAGE AND TRANSPORTATION INFORMATION SHEET (REV 10/2015)

Project Title: _____ **Building Permit #:** _____ **Hydrology File #:** _____

DRB#: _____ **EPC#:** _____ **Work Order#:** _____

Legal Description: _____

City Address: _____

Applicant: _____ **Contact:** _____

Address: _____

Phone#: _____ **Fax#:** _____ **E-mail:** _____

Other Contact: _____ **Contact:** _____

Address: _____

Phone#: _____ **Fax#:** _____ **E-mail:** _____

Check all that Apply:

DEPARTMENT:

- ☐ HYDROLOGY/ DRAINAGE
☐ TRAFFIC/ TRANSPORTATION
☐ MS4/ EROSION & SEDIMENT CONTROL

TYPE OF SUBMITTAL:

- ☐ ENGINEER/ARCHITECT CERTIFICATION

☐ CONCEPTUAL G & D PLAN
☐ GRADING PLAN
☐ DRAINAGE MASTER PLAN
☐ DRAINAGE REPORT
☐ CLOMR/LOMR

☐ TRAFFIC CIRCULATION LAYOUT (TCL)
☐ TRAFFIC IMPACT STUDY (TIS)
☐ EROSION & SEDIMENT CONTROL PLAN (ESC)

☐ OTHER (SPECIFY) _____

TYPE OF APPROVAL/ACCEPTANCE SOUGHT:

- ☐ BUILDING PERMIT APPROVAL
☐ CERTIFICATE OF OCCUPANCY

☐ PRELIMINARY PLAT APPROVAL
☐ SITE PLAN FOR SUB'D APPROVAL
☐ SITE PLAN FOR BLDG. PERMIT APPROVAL
☐ FINAL PLAT APPROVAL

☐ SIA/ RELEASE OF FINANCIAL GUARANTEE
☐ FOUNDATION PERMIT APPROVAL
☐ GRADING PERMIT APPROVAL
☐ SO-19 APPROVAL
☐ PAVING PERMIT APPROVAL
☐ GRADING/ PAD CERTIFICATION
☐ WORK ORDER APPROVAL
☐ CLOMR/LOMR

PRE-DESIGN MEETING?

☐ OTHER (SPECIFY) _____

IS THIS A RESUBMITTAL?: ☐ Yes ☐ No

DATE SUBMITTED: _____ By: _____

COA STAFF: _____ ELECTRONIC SUBMITTAL RECEIVED: _____

COA PARKING CALCULATIONS

CITY OF ALBUQUERQUE ZONING CODE: REQUIRED OFF STREET PARKING VEHICLE PARKING:
TOTAL BUILDING SF = 4,898; $4,898/200 = 24.49 \approx 25$ SPACES REQUIRED. THIS SITE QUALIFIES FOR 10% TRANSIT REDUCTION OF 2 SPACES AFTER THE REDUCTION THE AMOUNT OF SPACES REQUIRED EQUALS 23.
PARKING SPACES PROVIDED: 26 SPACES
BICYCLE PARKING:
ONE BICYCLE SPACE IS REQUIRED FOR EVERY 20 SPACES.
PARKING SPACE PROVIDED: 2 SPACES
MOTORCYCLE PARKING:
20 REQUIRED VEHICLE SPACES REQUIRES A MIN. OF 1 MOTORCYCLE PARKING SPACE.
PARKING SPACES PROVIDED: 1 SPACE
ACCESSIBLE PARKING:
23 REQUIRED VEHICLE SPACES REQUIRE A MIN. OF 1 ACCESSIBLE PARKING SPACE.
PARKING SPACES PROVIDED: 2 SPACES

PAVING KEYED NOTES

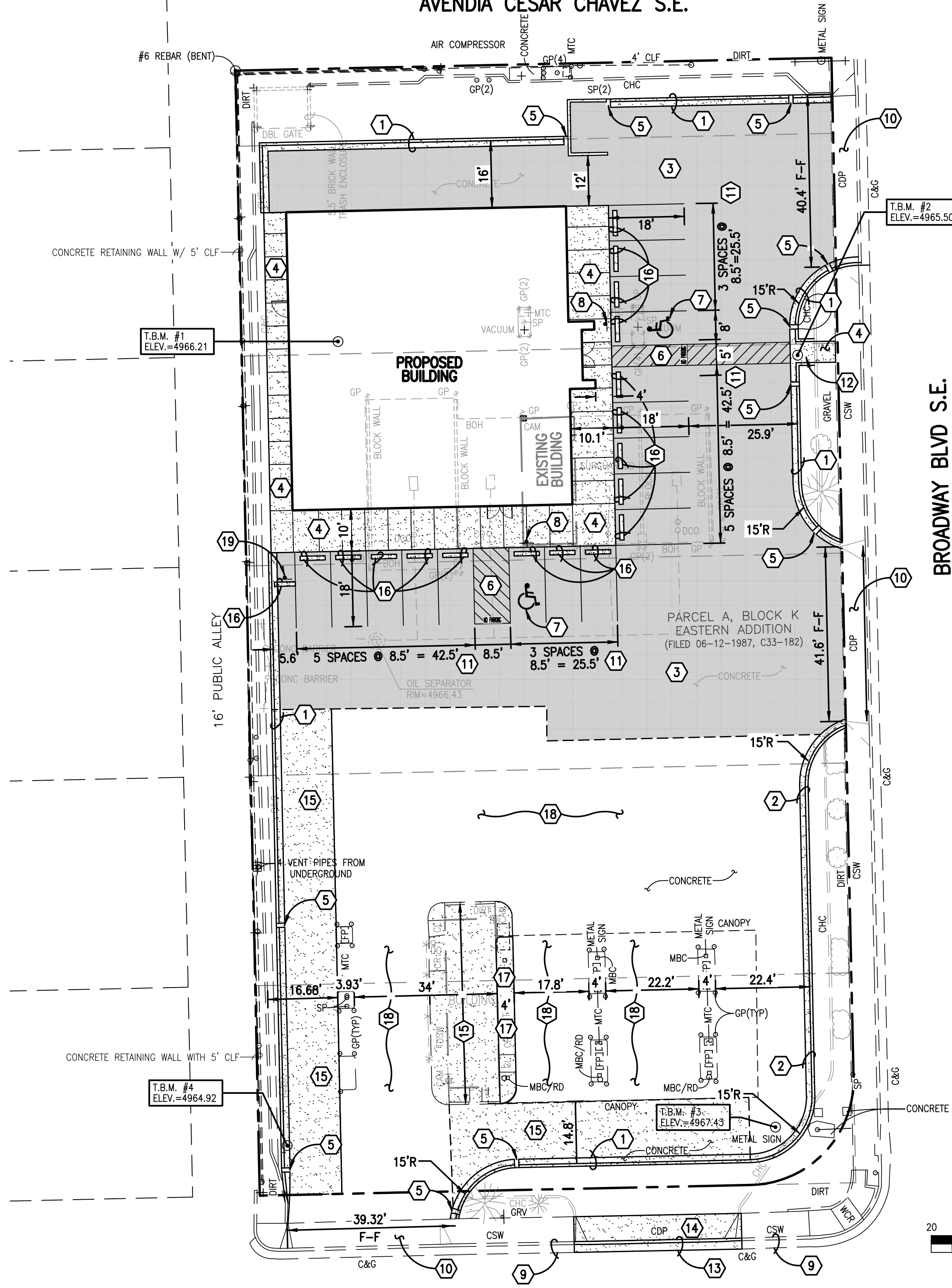
- 1 CONSTRUCT STANDARD CURB AND GUTTER PER TYPICAL SECTION, SHEET C3.1
- 2 CONSTRUCT DEPRESSED CURB AND GUTTER PER TYPICAL SECTION, SHEET C3.1
- 3 CONSTRUCT NEW ASPHALT PAVEMENT PER TYPICAL SECTION, SHEET C3.1
- 4 CONSTRUCT CONCRETE SIDEWALK PER TYPICAL SECTION, SHEET C3.1
- 5 CONSTRUCT 12" CURB OPENING FOR WATER HARVESTING AND FIRST FLUSH CAPTURE AND OVERFLOW RELEASE
- 6 PAINT 4" WIDE CROSS HATCH (2" CO) PAVEMENT MARKINGS @ 45 DEG WITH "NO PARKING" STENCILED AS SHOWN WITH BLUE TRAFFIC PAINT, MIN 2 COATS TYPICAL
- 7 INSTALL 1-ADA COMPLIANT ACCESSIBLE PARKING SPACE PAVEMENT MARKING WITH BLUE TRAFFIC PAINT, MIN 2 COATS, TYPICAL
- 8 INSTALL 1- ADA COMPLIANT ACCESSIBLE PARKING SIGN WITH LANGUAGE "VIOLATORS ARE SUBJECT TO A FINE AND/OR TOWING".
- 9 EXISTING CURB TO REMAIN
- 10 EXISTING SIDEWALK AND DRIVEPAD TO REMAIN
- 11 PAINT 4" PAVEMENT MARKING WITH WHITE TRAFFIC PAINT, MINIMUM 2 COATS, TYPICAL
- 12 CONSTRUCT ADA RAMP PER TYPICAL SECTION, SHEET C3.1
- 13 CONSTRUCT STANDARD CURB AND GUTTER PER COA STD DWG 2415
- 14 CONSTRUCT CONCRETE SIDEWALK PER COA STD DWG 2430

- 15 CONSTRUCT CONCRETE PAVEMENT PER TYPICAL SECTION, SHEET C3.1
- 16 INSTALL CONCRETE WHEEL STOP PER TYPICAL SECTION, SHEET C3.1
- 17 CONSTRUCT DOUBLE TURNDOWN SIDEWALK, PER TYPICAL SECTION, SHEET C3.1
- 18 EXISTING CONCRETE TO REMAIN
- 19 INSTALL 1 - "MOTORCYCLE PARKING ONLY" SIGN

DEMOLITION KEYED NOTES

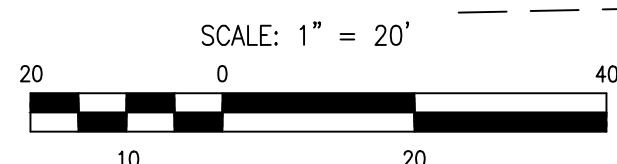
- 1 NEATLY SAW CUT, REMOVE, AND DISPOSE OF EXISTING CONCRETE PAVING
- 2 NEATLY SAW CUT, REMOVE, AND DISPOSE OF EXISTING CURB AND GUTTER
- 3 NEATLY SAW CUT EXISTING ASPHALT PAVEMENT
- 4 REMOVE AND DISPOSE OF EXISTING CURB AND GUTTER
- 5 REMOVE AND DISPOSE OF EXISTING CURB
- 6 REMOVE AND DISPOSE OF EXISTING ASPHALT PAVING
- 7 REMOVE AND DISPOSE OF EXISTING CONCRETE PAVING
- 8 REMOVE AND DISPOSE OF EXISTING BUILDING
- 9 REMOVE AND DISPOSE OF EXISTING BLOCK WALL
- 10 REMOVE AND DISPOSE OF EXISTING SEWER LINE
- 11 REMOVE AND DISPOSE OF EXISTING STORM DRAIN LINE AND INLET
- 12 REMOVE AND DISPOSE OF EXISTING SIDE WALK
- 13 REMOVE AND DISPOSE OF EXISTING GUARD POSTS
- 14 REMOVE AND DISPOSE OF EXISTING CONCRETE BARRIERS
- 15 REMOVE AND DISPOSE OF EXISTING OIL SEPARATOR
- 16 EXISTING METAL LIGHT POLE TO REMAIN
- 17 EXISTING POWER POLE TO REMAIN
- 18 EXISTING FENCE TO REMAIN
- 19 EXISTING RETAINING WALL TO REMAIN
- 20 EXISTING CURB AND GUTTER TO REMAIN
- 21 EXISTING TREE TO REMAIN
- 22 EXISTING CONCRETE PAVEMENT TO REMAIN
- 23 EXISTING GAS TANKS TO REMAIN
- 24 EXISTING CANOPY AND COLUMNS TO REMAIN
- 25 EXISTING GUARD POSTS TO REMAIN
- 26 EXISTING HOT BOX TO REMAIN
- 27 EXISTING SIDEWALK AND DRIVE PAD TO REMAIN
- 28 REMOVE AND SALVAGE EXISTING DUMPSTER FOR RELOCATION
- 29 REMOVE AND DISPOSE OF EXISTING SIDEWALK AND DRIVEPAD
- 30 EXISTING FUEL PUMP ISLAND TO REMAIN
- 31 EXISTING SANITARY SEWER LINE REMAIN

AVENDIA CESAR CHAVEZ S.E.

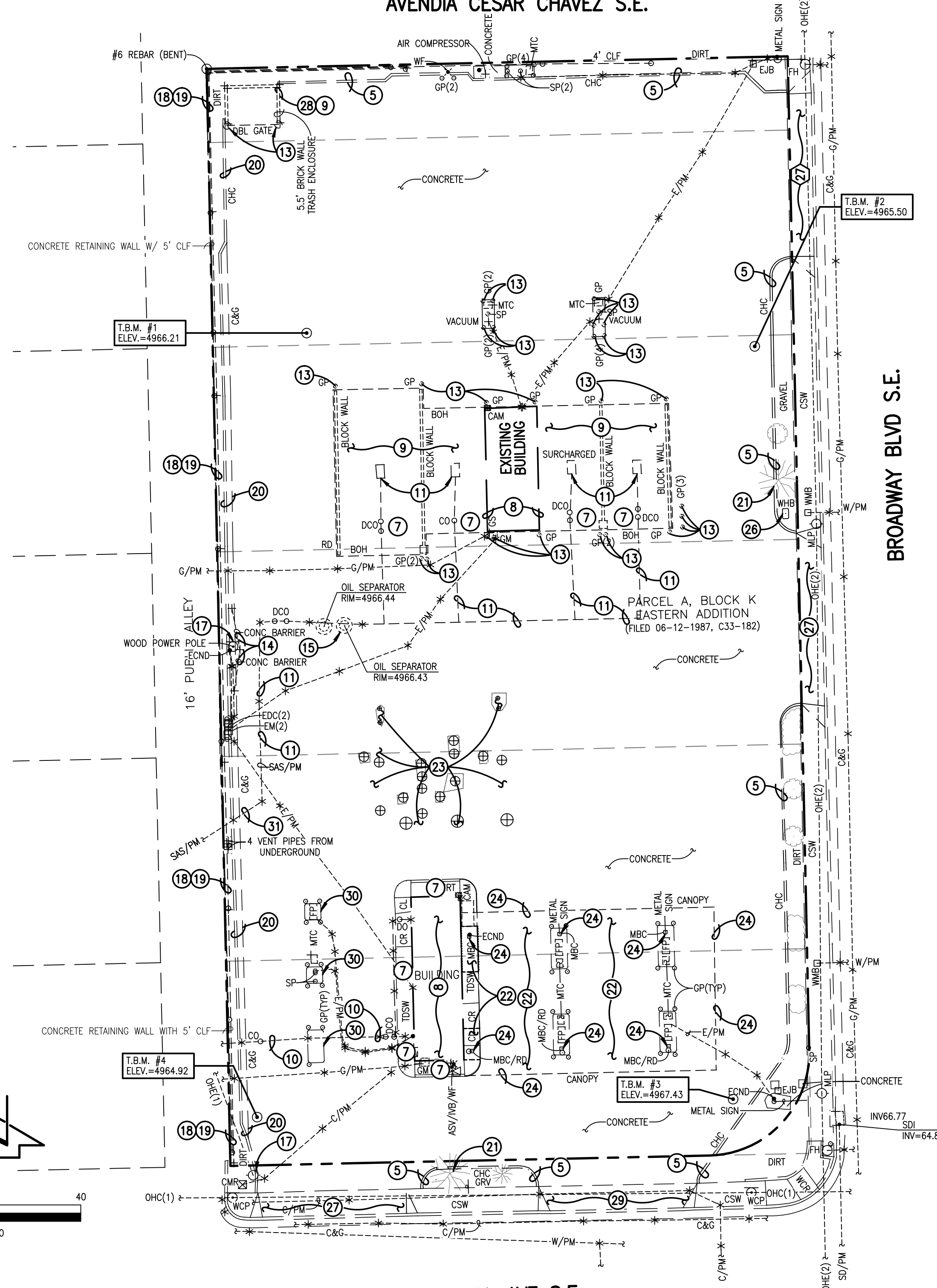


PAVING PLAN

TRUMBULL AVE S.E.

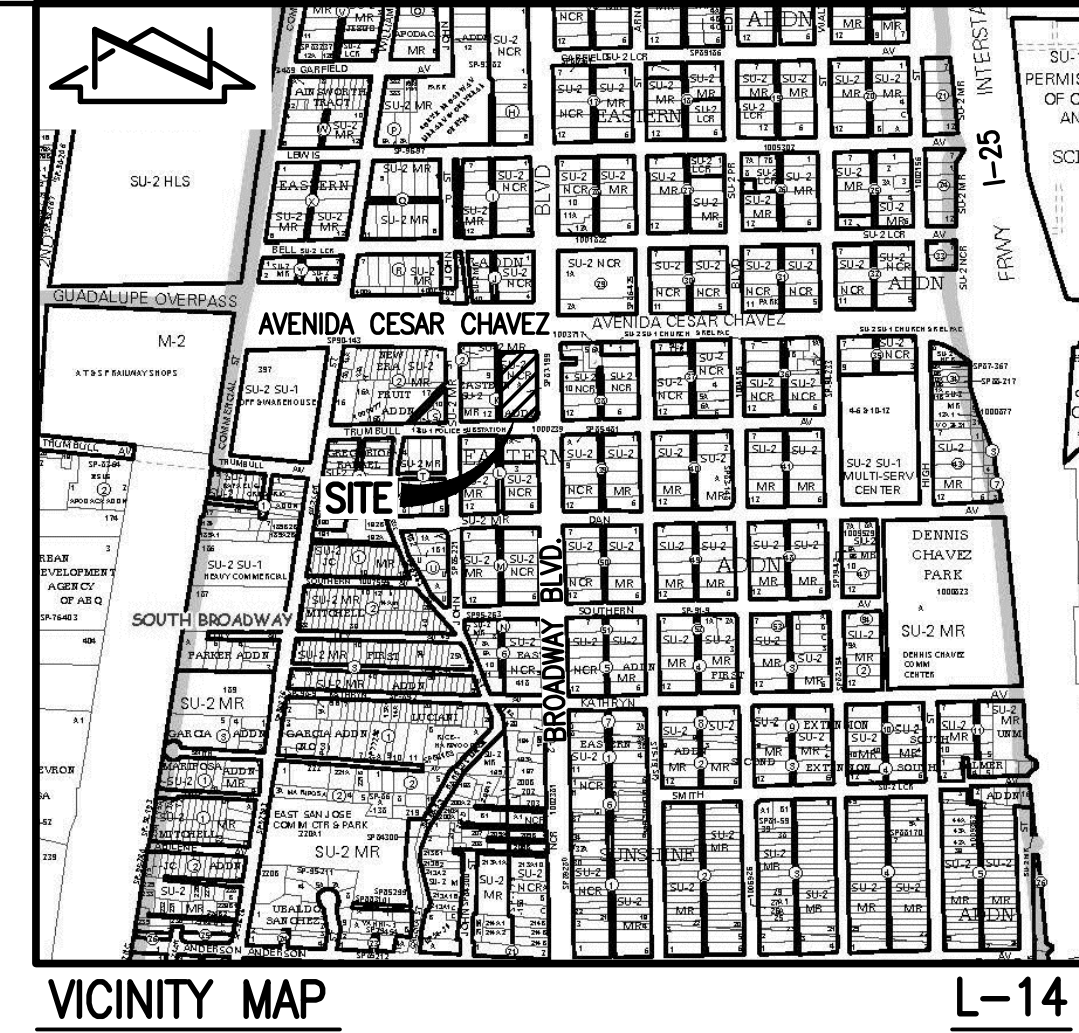


AVENDIA CESAR CHAVEZ S.E.



DEMOLITION PLAN

TRUMBULL AVE S.E.



LEGEND

C&G	CURB AND GUTTER
CAM	CAMERA
CHC	CONCRETE HEADER CURB
CLD	CENTERLINE OF DOOR
CLF	CHAINLINK FENCE
CONC	CONCRETE
CSW	CONCRETE SIDEWALK
GP	STEEL GUARD POST
GRV	GRAVEL
MBC	10"x10" METAL BUILDING COLUMN
MC	METAL COLUMN
MLP	METAL LIGHT POLE
MTC	METAL TRASH CAN
RD	ROOF DRAIN
RR	RIVER ROCK
SW	SIDEWALK
TDSW	TURNDOWN SIDEWALK
TYP	TYPICAL
WCP	WOOD COMMUNICATIONS POLE
WCR	WHEELCHAIR RAMP
*	PAINTED UTILITY MARKER
1.2"	DIAMETER OF TREE
(Tree symbol)	DECIDUOUS TREE
(Small tree symbol)	SMALL DECIDUOUS TREE
(Shrub symbol)	SHRUB
(Group of shrub symbol)	GROUP OF SHRUBS

DESIGN LEGEND:

(Dashed line)	RIGHT OF WAY LINE
(Dashed line with cross-ticks)	PUBLIC EASEMENT LINE
(Line with cross-ticks)	HIGH POINT / DIVIDE
(Patterned box)	PROPOSED CONCRETE
(Patterned box)	PROPOSED ASPHALT PAVING

PROJECT BENCHMARK

AGRS 3 1/4" ALUMINUM DISC STAMPED "12-L14 1987", SET FLUSH WITH TOP OF THE WEST CURB, APPROXIMATELY 70 FEET NORTH OF THE INTERSECTION OF THIRD STREET SW. AND SECOND STREET SW.
NORTHING: 1,480,971.075 (GRID)
EASTING: 1,520,049.232 (GRID)
ELEVATION = 4947.708 FEET (NAVD 1988)
1"/CF = 1.000316270

TEMPORARY BENCHMARK #1 (T.B.M.)

A CHISELED "+" SCRIBED IN CONCRETE NEAR THE NORTHWEST CORNER OF THE CARWASH, AS SHOWN ON THIS SHEET.
ELEVATION = 4966.21 FEET (NAVD 1988)

TEMPORARY BENCHMARK #2 (T.B.M.)

A CHISELED "+" SCRIBED IN CONCRETE NEAR THE NORTHEAST CORNER OF THE CARWASH, AS SHOWN ON THIS SHEET.
ELEVATION = 4965.50 FEET (NAVD 1988)

TEMPORARY BENCHMARK #3 (T.B.M.)

A MAG NAIL SET IN CONCRETE JOINT AT THE SOUTHEAST CORNER OF THE SITE, AS SHOWN ON THIS SHEET.
ELEVATION = 4967.43 FEET (NAVD 1988)

TEMPORARY BENCHMARK #4 (T.B.M.)

A CHISELED "+" SCRIBED IN CONCRETE AT THE SOUTHWEST CORNER OF THE SITE, AS SHOWN ON THIS SHEET.
ELEVATION = 4964.92 FEET (NAVD 1988)

2016.042.1

HIGH MESA Consulting Group

6010-B MIDWAY PARK BLVD. NE • ALBUQUERQUE, NEW MEXICO 87109
PHONE: 505.345.4250 • FAX: 505.345.4254 • www.highmesacg.com



12-5-2016

nbwarchitects p.a.
ARCHITECTURE / PLANNING / INTERIORS
SCOTT L. NELSON, A.I.A. KEVIN R. BOOBY, A.I.A. JAMES H. WYATT, A.I.A.

NEW BUILDING FOR:
GOOD 2 GO CONVENIENCE STORE
ALBUQUERQUE NO. 309
ALBUQUERQUE, NEW MEXICO

PROPOSED PAVING PLAN

PROJECT:

REVISIONS

PROJECT NO.
16031
DATE:
DECEMBER 2016
DRAWN BY:
J. Y. R.
CHECKED BY:
R. J. C.

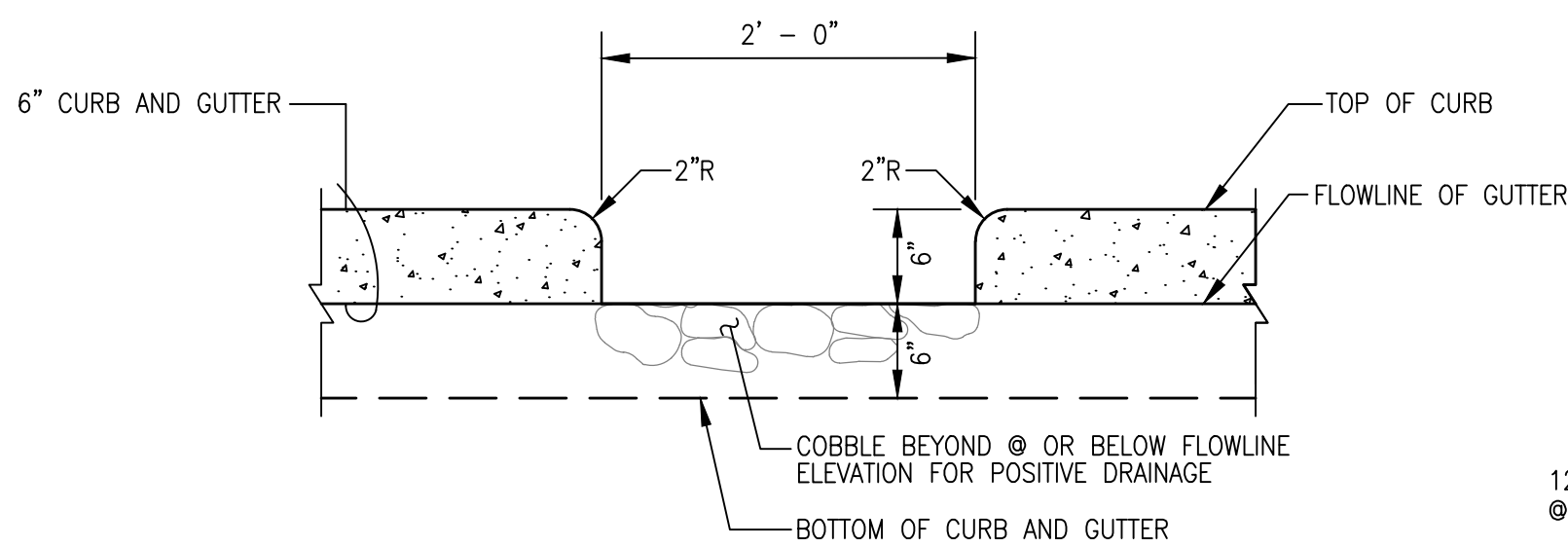
DRAWING NO.:

C1.2

NOTE:

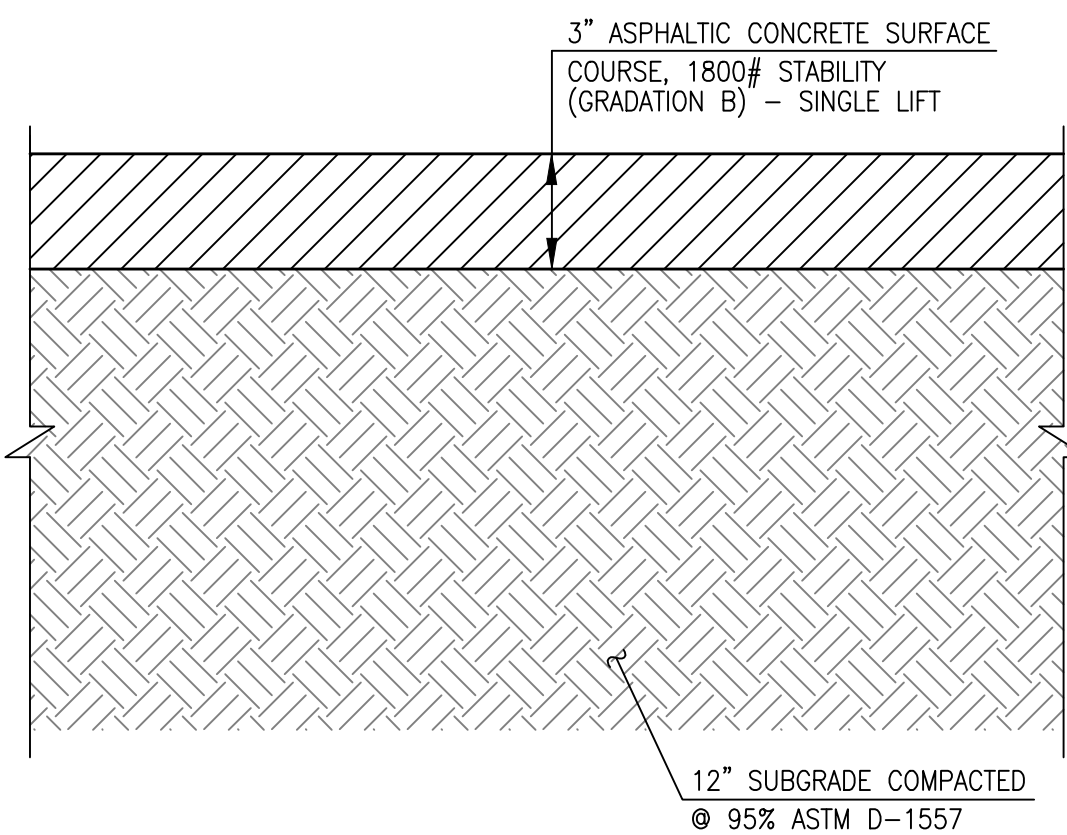
THIS IS NOT A BOUNDARY SURVEY; DATA IS SHOWN FOR ORIENTATION ONLY.
THE TOPOGRAPHIC AND UTILITY INFORMATION DEPICTED HEREON IS BASED UPON THE TOPOGRAPHIC AND UTILITY SURVEY PREPARED BY HIGH MESA CONSULTING GROUP, NMPS NO. 15075, DATED 08/19/2016 (2016.039.1).

File Path: P:\DATA\2016\2016.0421\DWG\16031.DWG Plot Date: 12-05-2016
File Name: 160421-C3.1.DWG Plot Time: 10:36 am



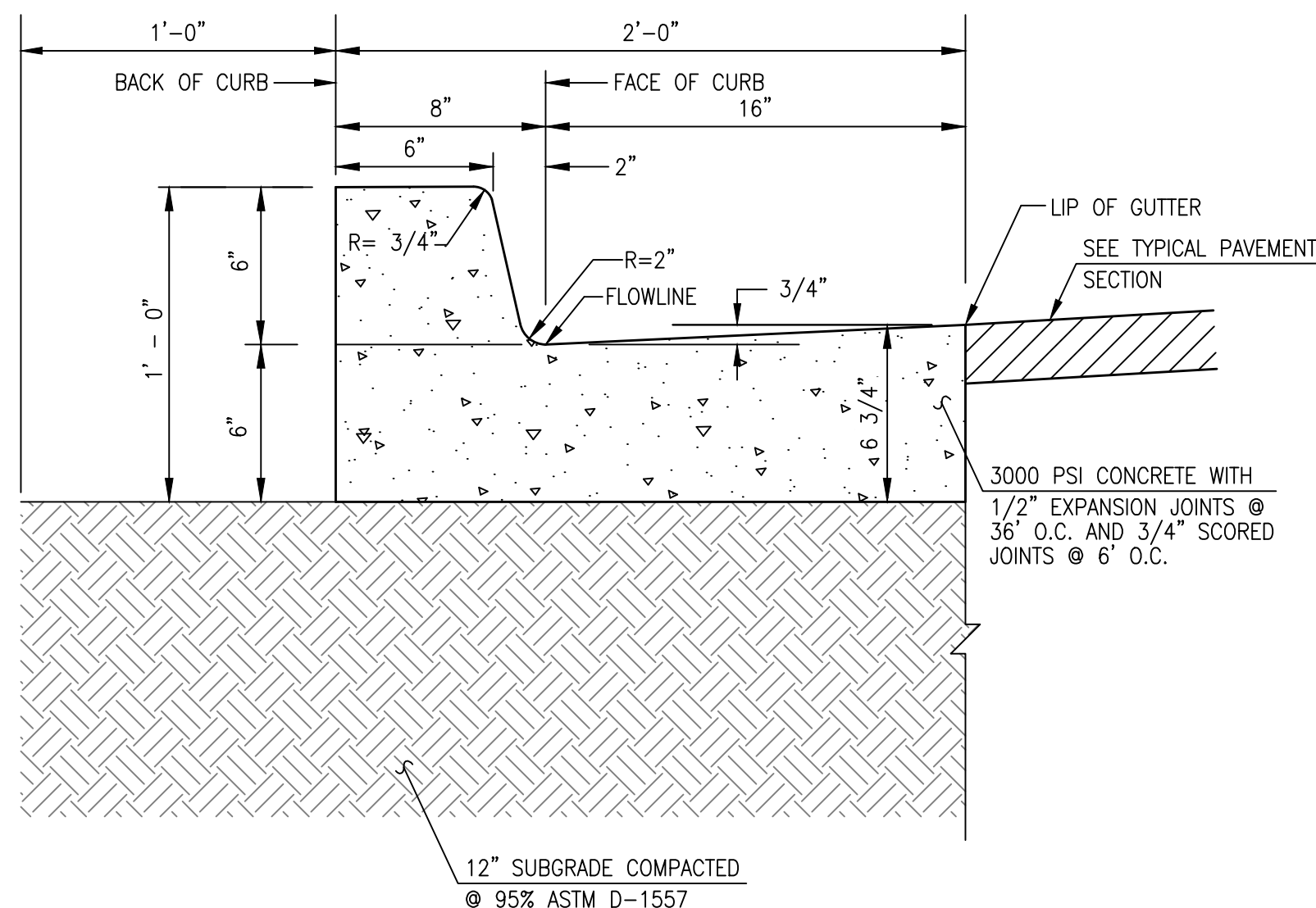
CURB CUT SECTION

SCALE: 1" = 1'-0"



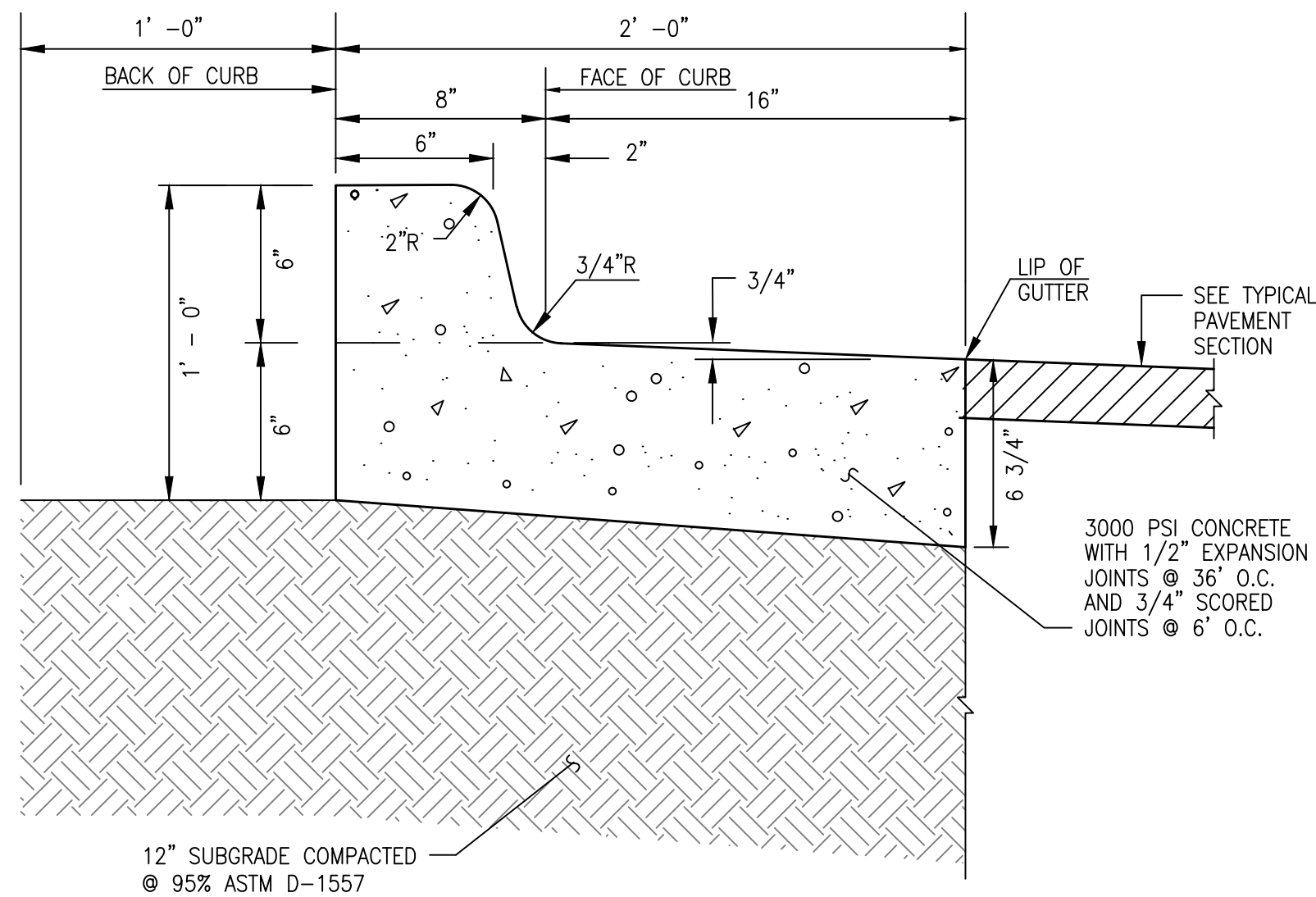
TYPICAL 3" ASPHALT PAVING SECTION
(VEHICULAR TRAFFIC AREAS)

SCALE: 1" = 5'



TYPICAL SIX-INCH CURB & GUTTER

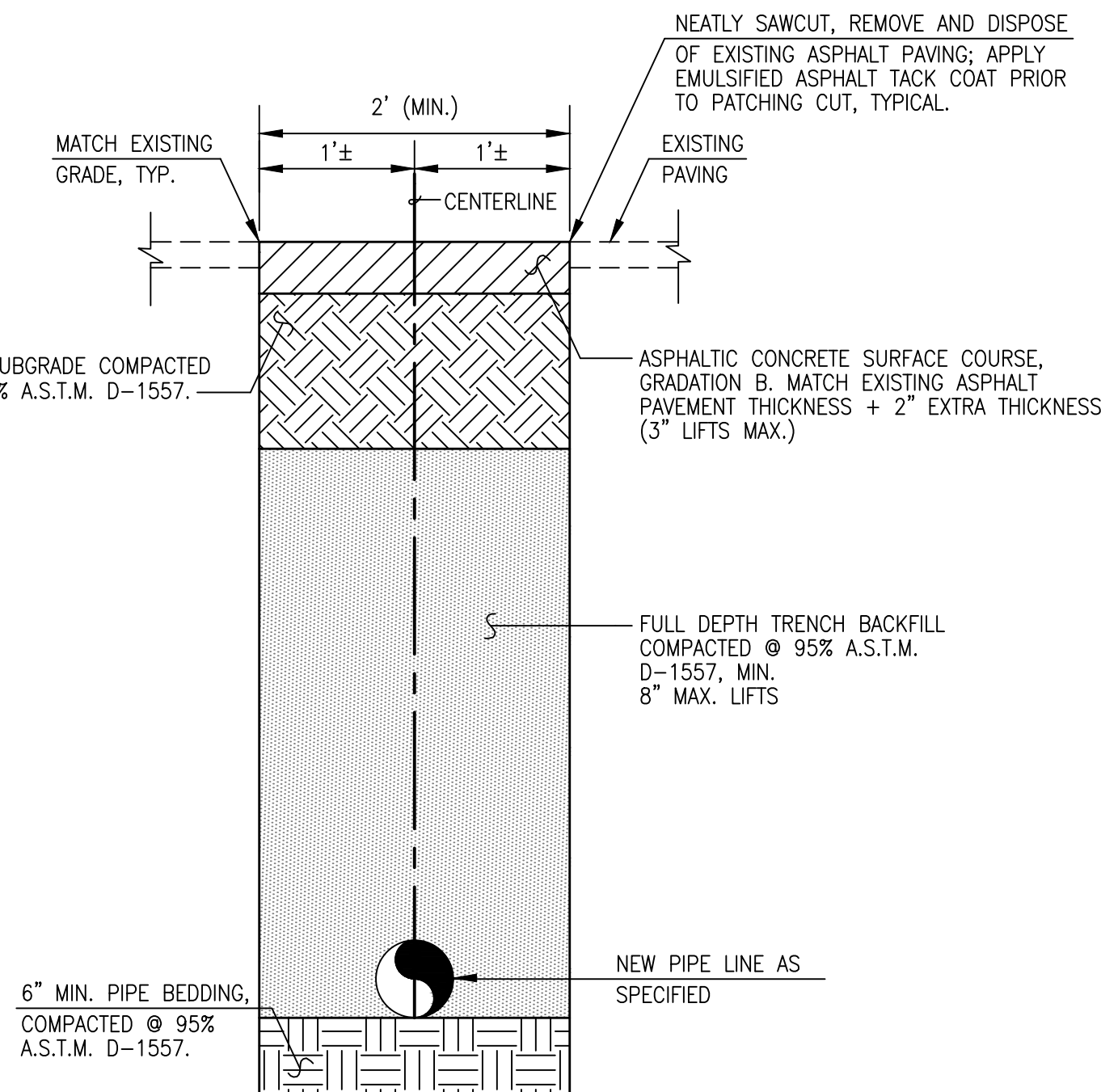
SCALE: 1" = 0'-6"



TYPICAL SIX-INCH DEPRESSED CURB AND GUTTER

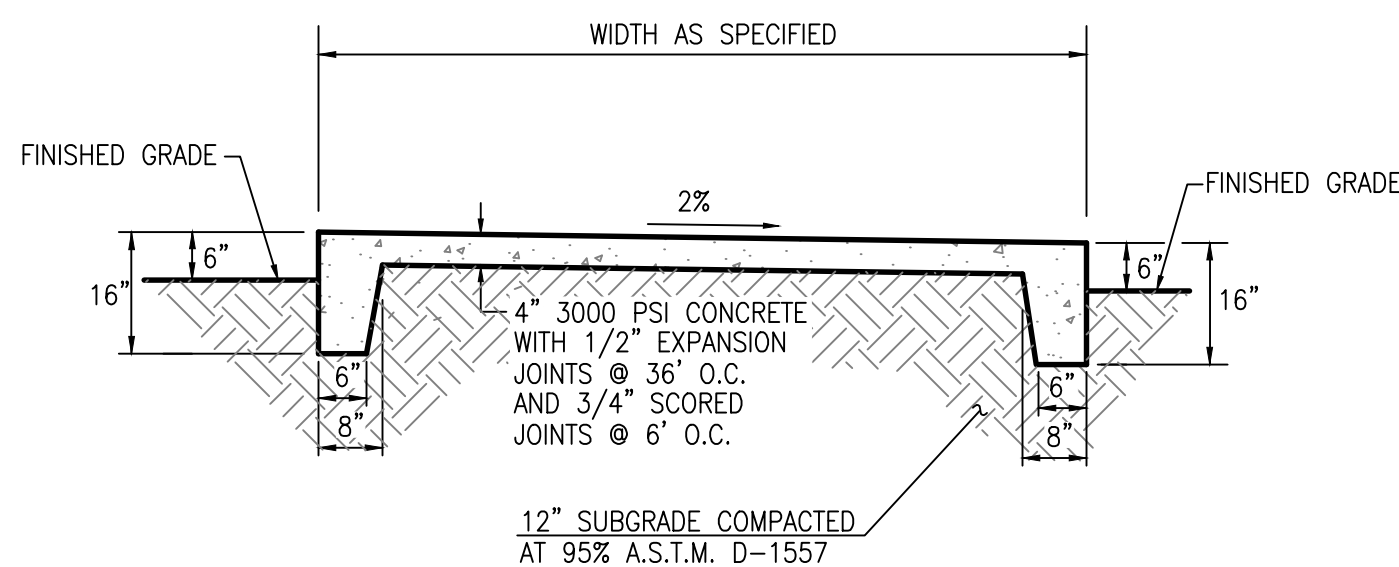
SCALE: 1" = 0'-6"

NOTE: USE THIS SECTION FOR CASES WHERE PAVING SLOPES AWAY FROM FACE OF CURB



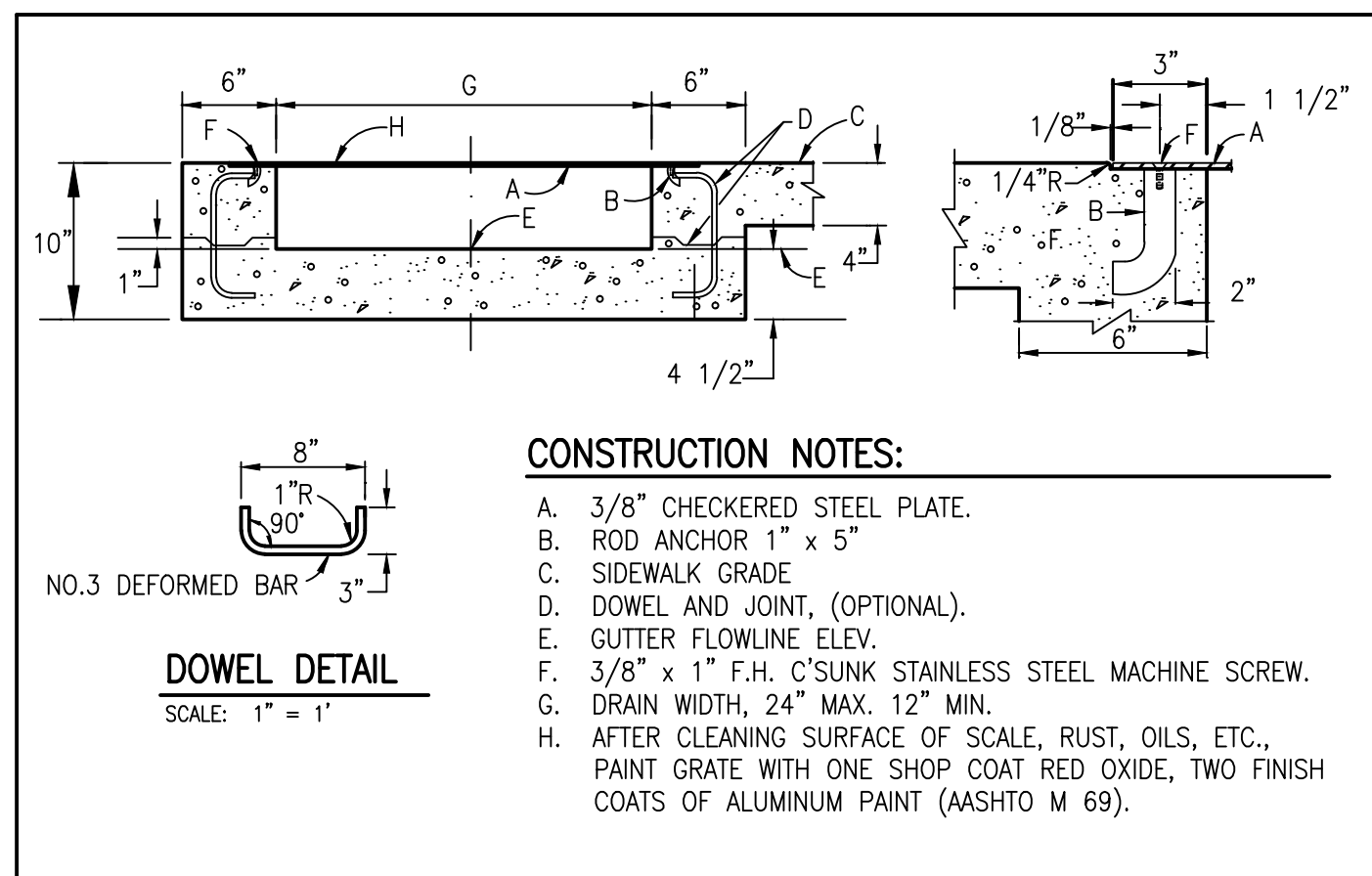
TYPICAL PRIVATE PAVING UTILITY CUT AND PAVEMENT REPLACEMENT SECTION

SCALE: 1"=1'



TYPICAL DOUBLE TURNDOWN SIDEWALK SECTION

SCALE: 1" = 2'-0"

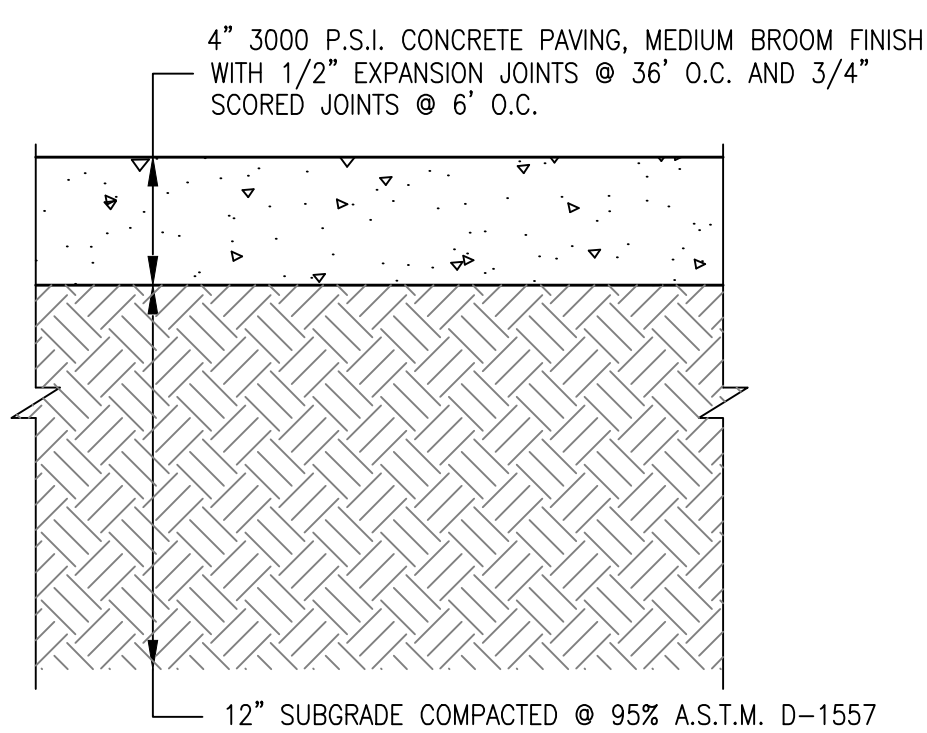


SIDEWALK CULVERT SECTION

SCALE: 1" = 2'

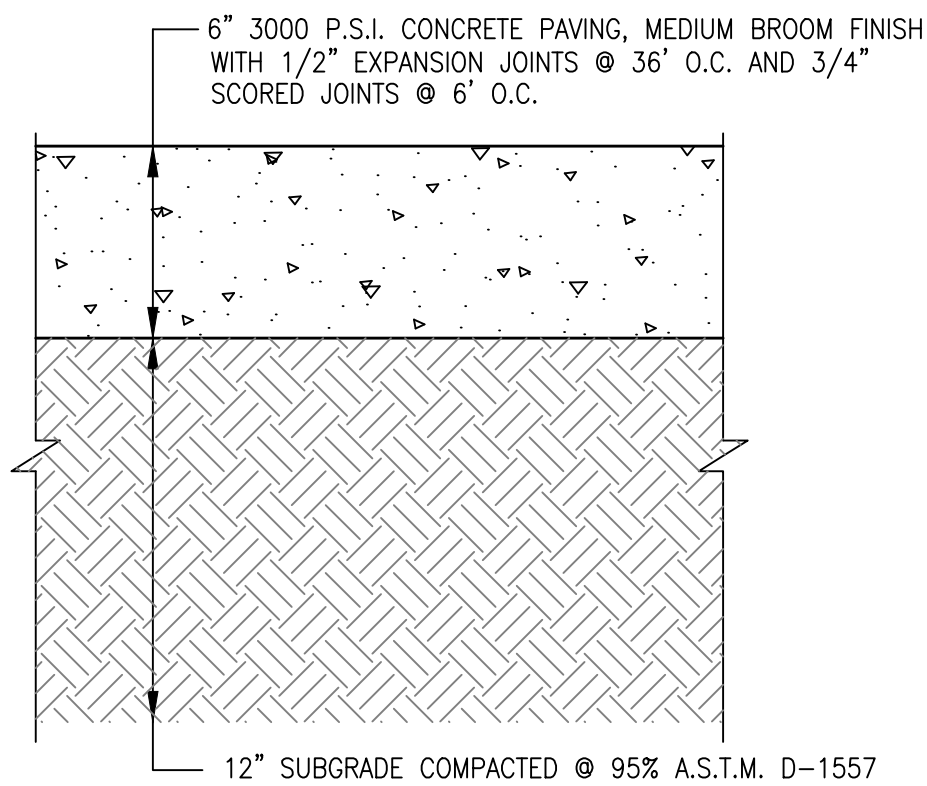
CONSTRUCTION NOTES:

- 3/8" CHECKERED STEEL PLATE.
- ROD ANCHOR 1" x 5"
- SIDEWALK GRADE.
- DOWEL AND JOINT, (OPTIONAL).
- GUTTER FLOWLINE, ELEV.
- 3/8" x 1" F.H. C'SUNK STAINLESS STEEL MACHINE SCREW.
- DRAIN WIDTH, 24" MAX. 12" MIN.
- AFTER CLEANING SURFACE OF SCALE, RUST, OILS, ETC., PAINT GRATE WITH ONE SHOP COAT RED OXIDE, TWO FINISH COATS OF ALUMINUM PAINT (AASHTO M 69).



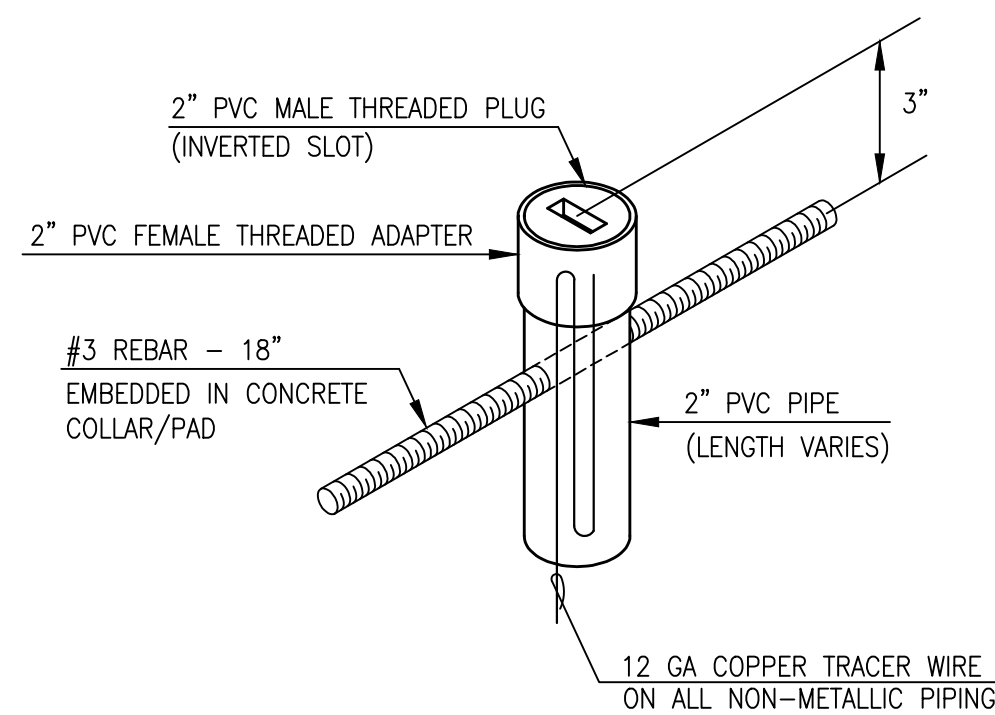
TYPICAL CONCRETE SIDEWALK SECTION

SCALE: 1" = 6"



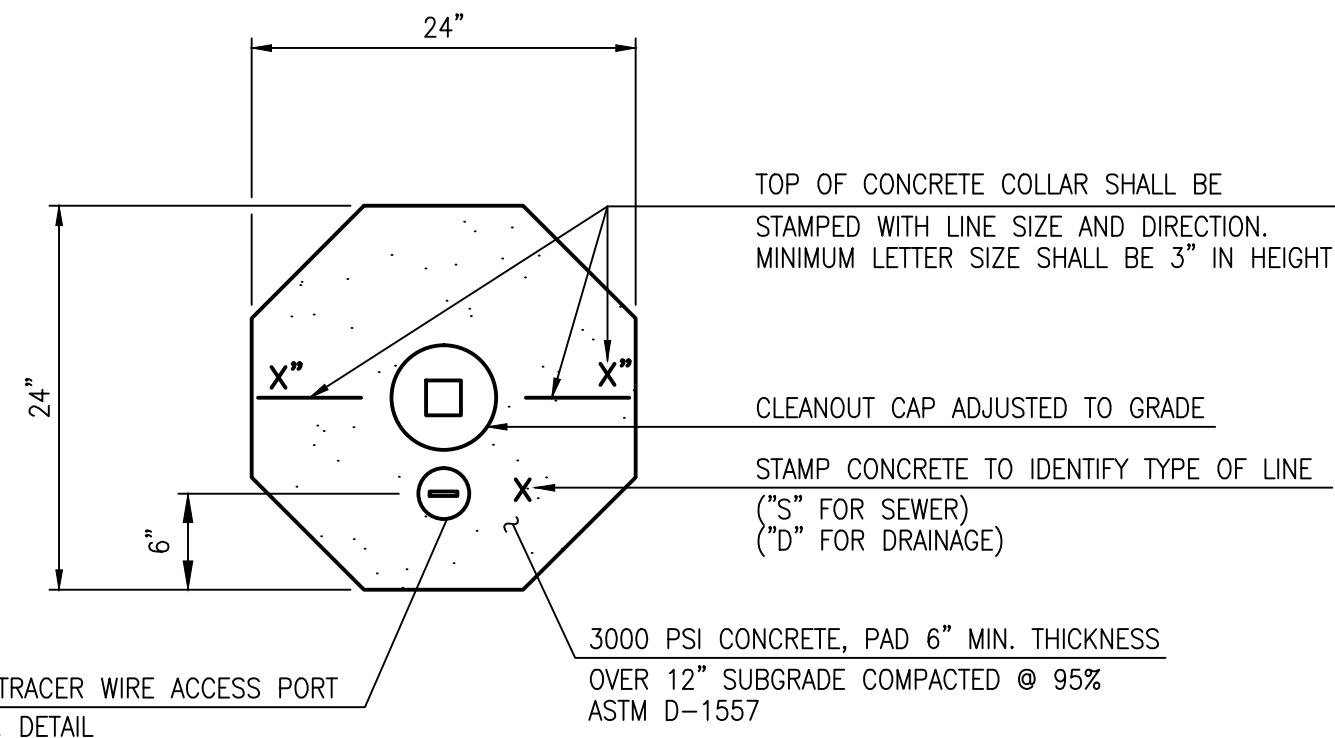
TYPICAL CONCRETE PAVEMENT SECTION

SCALE: 1" = 6"



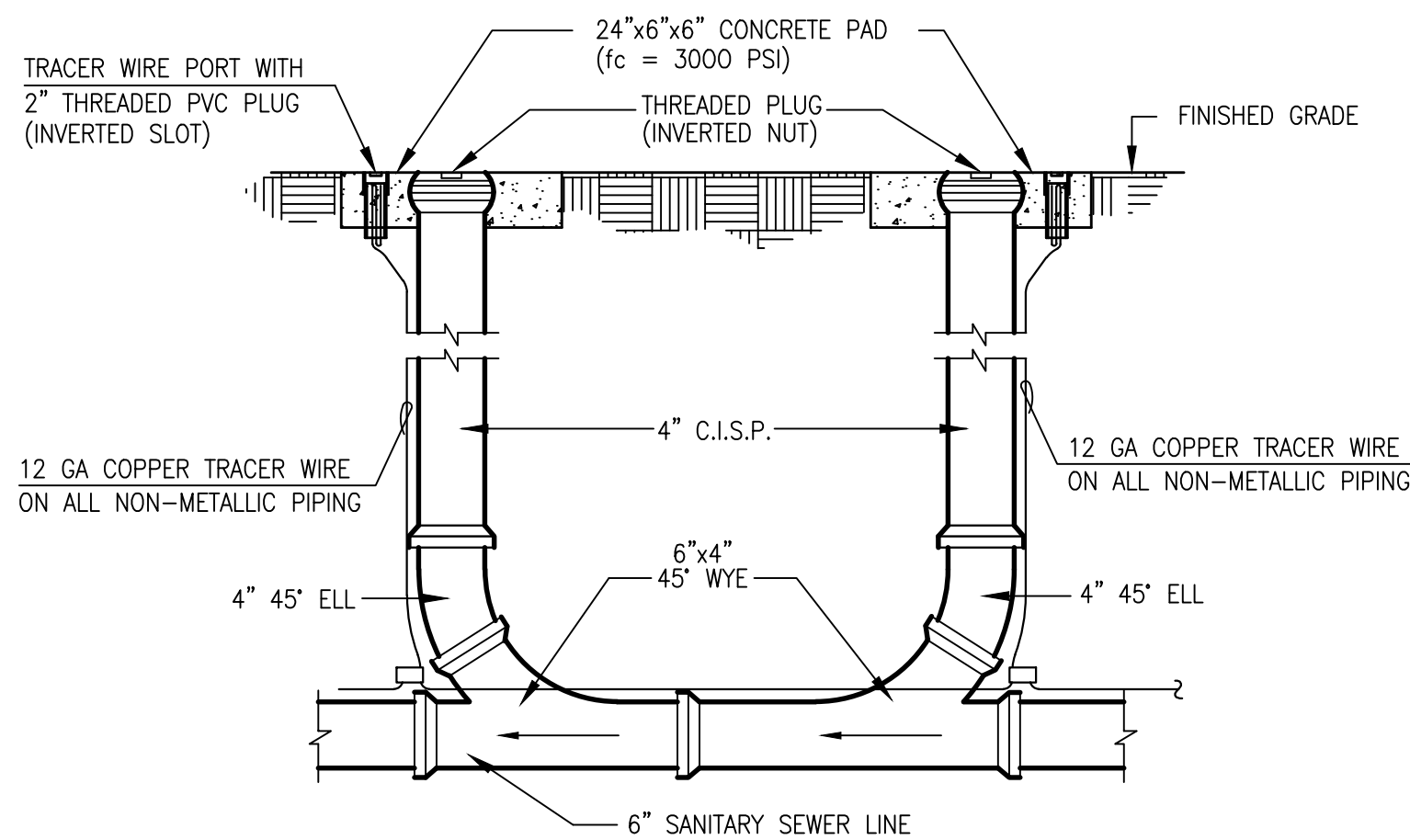
TYPICAL TRACER WIRE ACCESS PORT

NOT TO SCALE



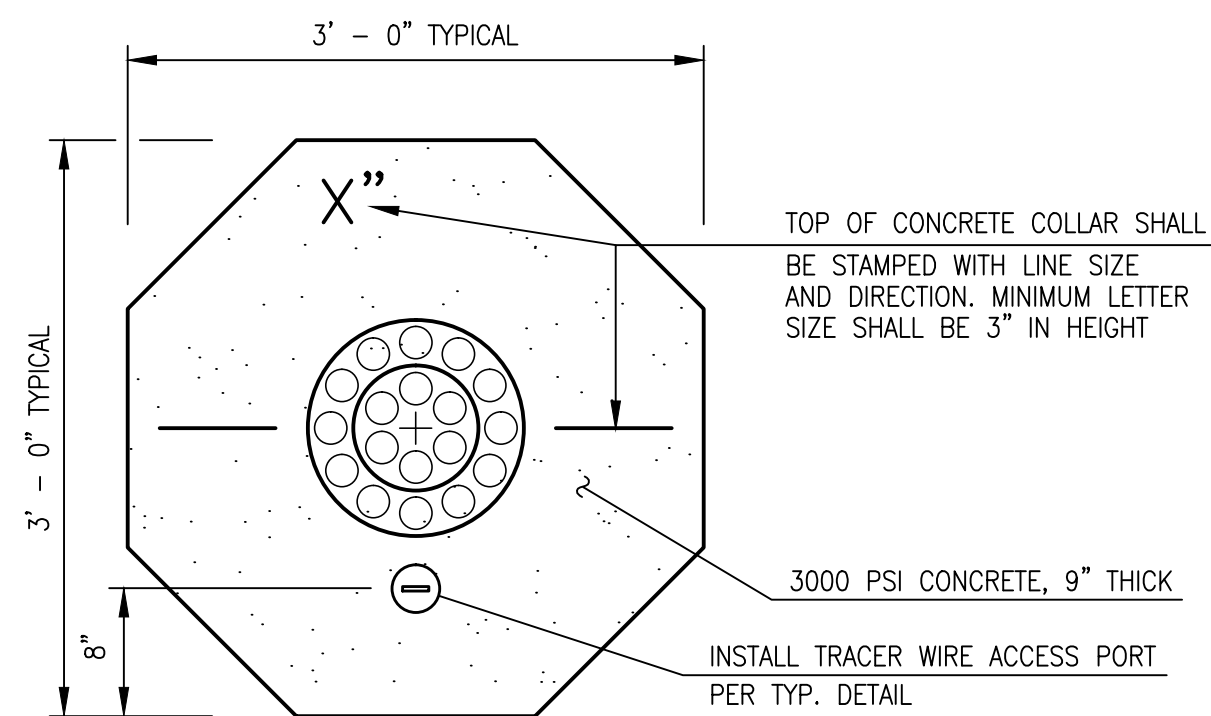
TYPICAL CLEANOUT COLLAR DETAIL

SCALE: 1" = 1'



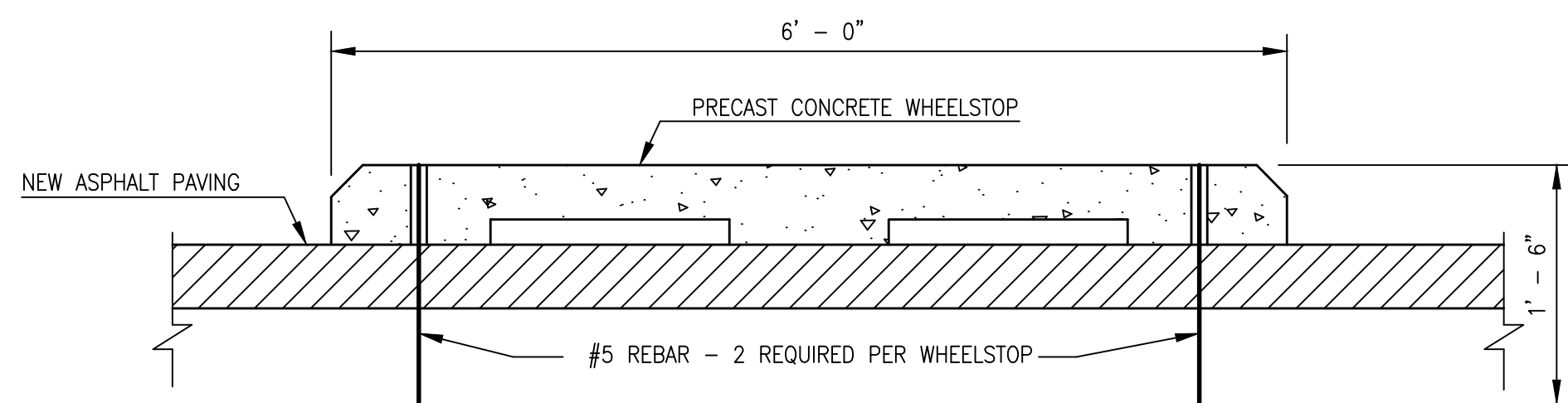
TYPICAL DOUBLE CLEANOUT SECTION

NOT TO SCALE



TYPICAL WATER VALVE BOX COLLAR DETAIL

SCALE: 1" = 1'



WHEELSTOP SECTION

SCALE: 1" = 1'-0"



12-5-2016

nbwarchitects p.a.
ARCHITECTURE / PLANNING / INTERIORS
SCOTT L. NIELSON, A.I.A. KEVIN R. BOOBY, A.I.A. JAMES H. WYATT, A.I.A.
900 JOHN HENRY PARKWAY, P.O. BOX 2212 - NORTH PALMS, IDAHO 83403-2212
(208) 208-522-8778 (208) 222-8705 (208) 222-8706 (208) 222-8707 (208) 222-8708 (208) 222-8709 (208) 222-8710 (208) 222-8711 (208) 222-8712 (208) 222-8713 (208) 222-8714 (208) 222-8715 (208) 222-8716 (208) 222-8717 (208) 222-8718 (208) 222-8719 (208) 222-8720 (208) 222-8721 (208) 222-8722 (208) 222-8723 (208) 222-8724 (208) 222-8725 (208) 222-8726 (208) 222-8727 (208) 222-8728 (208) 222-8729 (208) 222-8730 (208) 222-8731 (208) 222-8732 (208) 222-8733 (208) 222-8734 (208) 222-8735 (208) 222-8736 (208) 222-8737 (208) 222-8738 (208) 222-8739 (208) 222-8740 (208) 222-8741 (208) 222-8742 (208) 222-8743 (208) 222-8744 (208) 222-8745 (208) 222-8746 (208) 222-8747 (208) 222-8748 (208) 222-8749 (208) 222-8750 (208) 222-8751 (208) 222-8752 (208) 222-8753 (208) 222-8754 (208) 222-8755 (208) 222-8756 (208) 222-8757 (208) 222-8758 (208) 222-8759 (208) 222-8760 (208) 222-8761 (208) 222-8762 (208) 222-8763 (208) 222-8764 (208) 222-8765 (208) 222-8766 (208) 222-8767 (208) 222-8768 (208) 222-8769 (208) 222-8770 (208) 222-8771 (208) 222-8772 (208) 222-8773 (208) 222-8774 (208) 222-8775 (208) 222-8776 (208) 222-8777 (208) 222-8778 (208) 222-8779 (208) 222-8780 (208) 222-8781 (208) 222-8782 (208) 222-8783 (208) 222-8784 (208) 222-8785 (208) 222-8786 (208) 222-8787 (208) 222-8788 (208) 222-8789 (208) 222-8790 (208) 222-8791 (208) 222-8792 (208) 222-8793 (208) 222-8794 (208) 222-8795 (208) 222-8796 (208) 222-8797 (208) 222-8798 (208) 222-8799 (208) 222-8800 (208) 222-8801 (208) 222-8802 (208) 222-8803 (208) 222-8804 (208) 222-8805 (208) 222-8806 (208) 222-8807 (208) 222-8808 (208) 222-8809 (208) 222-8810 (208) 222-8811 (208) 222-8812 (208) 222-8813 (208) 222-8814 (208) 222-8815 (208) 222-8816 (208) 222-8817 (208) 222-8818 (208) 222-8819 (208) 222-8820 (208) 222-8821 (208) 222-8822 (208) 222-8823 (208) 222-8824 (208) 222-8825 (208) 222-8826 (208) 222-8827 (208) 222-8828 (208) 222-8829 (208) 222-8830 (208) 222-8831 (208) 222-8832 (208) 222-8833 (208) 222-8834 (208) 222-8835 (208) 222-8836 (208) 222-8837 (208) 222-8838 (208) 222-8839 (208) 222-8840 (208) 222-8841 (208) 222-8842 (208) 222-8843 (208) 222-8844 (208) 222-8845 (208) 222-8846 (208) 222-8847 (208) 222-8848 (208) 222-8849 (208) 222-8850 (208) 222-8851 (208) 222-8852 (208) 222-8853 (208) 222-8854 (208) 222-8855 (208) 222-8856 (208) 222-8857 (208) 222-8858 (208) 222-8859 (208) 222-8860 (208) 222-8861 (208) 222-8862 (208) 222-8863 (208) 222-8864 (208) 222-8865 (208) 222-8866 (208) 222-8867 (208) 222-8868 (208) 222-8869 (208) 222-8870 (208) 222-8871 (208) 222-8872 (208) 222-8873 (208) 222-8874 (208) 222-8875 (208) 222-8876 (208) 222-8877 (208) 222-8878 (208) 222-8879 (208) 222-8880 (208) 222-8881 (208) 222-8882 (208) 222-8883 (208) 222-8884 (208) 222-8885 (208) 222-8886 (208) 222-8887 (208) 222-8888 (208) 222-8889 (208) 222-8890 (208) 222-8891 (208) 222-8892 (208) 222-8893 (208) 222-8894 (208) 222-8895 (208) 222-8896 (208) 222-8897 (208) 222-8898 (208) 222-8899 (208) 222-8900 (208) 222-8901 (208) 222-8902 (208) 222-8903 (208) 222-8904 (208) 222-8905 (208) 222-8906 (208) 222-8907 (208) 222-8908 (208) 222-8909 (208) 222-8910 (208) 222-8911 (208) 222-8912 (208) 222-8913 (208) 222-8914 (208) 222-8915 (208) 222-8916 (208) 222-8917 (208) 222-8918 (208) 222-8919 (208) 222-8920 (208) 222-8921 (208) 222-8922 (208) 222-8923 (208) 222-8924 (208) 222-8925 (208) 222-8926 (208) 222-8927 (208) 222-8928 (208) 222-8929 (208) 222-8930 (208) 222-8931 (208) 222-8932 (208) 222-8933 (208) 222-8934 (208) 222-8935 (208) 222-8936 (208) 222-8937 (208) 222-8938 (208) 222-8939 (208) 222-8940 (208) 222-8941 (208) 222-8942 (208) 222-8943 (208) 222-8944 (208) 222-8945 (208) 222-8946 (208) 222-8947 (208) 222-8948 (208) 222-8949 (208) 222-8950 (208) 222-8951 (208) 222-8952 (208) 222-8953 (208) 222-8954 (208) 222-8955 (208) 222-8956 (208) 222-8957 (208) 222-8958 (208) 222-8959 (208) 222-8960 (208) 222-8961 (208) 222-8962 (208) 222-8963 (208) 222-8964 (208) 222-8965 (208) 222-8966 (208) 222-8967 (208) 222-8968 (208) 222-8969 (208) 222-8970 (208) 222-8971 (208) 222-8972 (208) 222-8973 (208) 222-8974 (208) 222-8975 (208) 222-8976 (208) 222-8977 (208) 222-8978 (208) 222-8979 (208) 222-8980 (208) 222-8981 (208) 222-8982 (208) 222-8983 (208) 222-8984 (208) 222-8985 (208) 222-8986 (208) 222-8987 (208) 222-8988 (208) 222-8989 (208) 222-8990 (208) 222-8991 (208) 222-8992 (208) 222-8993 (208) 222-8994 (208) 222-8995 (208) 222-8996 (208) 222-8997 (208) 222-8998 (208) 222-8999 (208) 222-9000 (208) 222-9001 (208) 222-9002 (208) 222-9003 (208) 222-9004 (208) 222-9005 (208) 222-9006 (208) 222-9007 (208) 222-9008 (208) 222-9009 (208) 222-9010 (208) 222-9011 (208) 222-9012 (208) 222-9013 (208) 222-9014 (208) 222-9015 (208) 222-9016 (208) 222-9017 (208) 222-9018 (208) 222-9019 (208) 222-9020 (208) 222-9021 (208) 222-9022 (208) 222-9023 (208) 222-9024 (208) 222-9025 (208) 222-9026 (208) 222-9027 (208) 222-9028 (208) 222-9029 (208) 222-9030 (208) 222-9031 (208) 222-9032 (208) 222-9033 (208) 222-9034 (208) 222-9035 (208) 222-9036 (208) 222-9037 (208) 222-9038 (208) 222-9039 (208) 222-9040 (208) 222-9041 (208) 222-9042 (208) 222-9043 (208) 222-9044 (208) 222-9045 (208) 222-9046 (208) 222-9047 (208) 222-9048 (208) 222-9049 (208) 222-9050 (208) 222-9051 (208) 222-9052 (208) 222-9053 (208) 222-9054 (208) 222-9055 (208) 222-9056 (208) 222-9057 (208) 222-9058 (208) 222-9059 (208) 222-9060 (208) 222-9061 (208) 222-9062 (208) 222-9063 (208) 222-9064 (208) 222-9065 (208) 222-9066 (208) 222-9067 (208) 222-9068 (208) 222-9069 (208) 222-9070 (208) 222-9071 (208) 222-9072 (208) 222-9073 (208) 222-9074 (208) 222-9075 (208) 222-9076 (208) 222-9077 (208) 222-9078 (208) 222-9079 (208) 222-9080 (208) 222-9081 (208) 222-9082 (208) 222-9083 (208) 222-9084 (208) 222-9085 (208) 222-9086 (208) 222-9087 (208) 222-9088 (208) 222-9089 (208) 222-9090 (208) 222-9091 (208) 222-9092 (208) 222-9093 (208) 222-9094 (208) 222-9095 (208) 222-9096 (208) 222-9097 (208) 222-9098 (208) 222-9099 (208) 222-9100 (208) 222-9101 (208) 222-9102 (208) 222-9103 (208) 222-9104 (208) 222-9105 (208) 222-9106 (208) 222-9107 (208) 222-9108 (208) 222-9109 (208) 222-9110 (208) 222-9111 (208) 222-9112 (208) 222-9113 (208) 222-9114 (208) 222-9115 (208) 222-9116 (208) 222-9117 (208) 222-9118 (208) 222-9119 (208) 222-9120 (208) 222-9121 (208) 222-9122 (208) 222-9123 (208) 222-9124 (208) 222-9125 (208) 222-9126 (208) 222-9127 (208) 222-9128 (208) 222-9129 (208) 222-9130 (208) 222-9131 (208) 222-9132 (208) 222-9133 (208) 222-9134 (208) 222-9135 (208) 222-9136 (208) 222-9137 (208) 222-9138 (208) 222-9139 (208) 222-9140 (208) 222-9141 (208) 222-9142 (208) 222-9143 (208) 222-9144 (208) 222-9145 (208) 222-9146 (208) 222-9147 (208) 222-9148 (208) 222-9149 (208) 222-9150 (208) 222-9151 (208) 222-9152 (208) 222-9153 (208) 222-9154 (208) 222-9155 (208) 222-9156 (208) 222-9157 (208) 222-9158 (208) 222-9159 (208) 222-9160 (208) 222-9161 (208) 222-9162 (208) 222-9163 (208) 222-9164 (208) 222-9165 (208) 222-9166 (208) 222-9167 (208) 222-9168 (208) 222-9169 (208) 222-9170 (208) 222-9171 (208) 222-9172 (208) 222-9173 (208) 222-9174 (208) 222-9175 (208) 222-9176 (208) 222-9177 (208) 222-9178 (208) 222-9179 (208) 222-9180 (208) 222-9181 (208) 222-9182 (208) 222-9183 (208) 222-9184 (208) 222-9185 (208) 222-9186 (208) 222-9187 (208) 222-9188 (208) 222-9189 (208) 222-9190 (208) 222-9191 (208) 222-9192 (208) 222-9193 (208) 222-9194 (208) 222-9195 (208) 222-9196 (208) 222-9197 (208) 222-9198 (208) 222-9199 (208) 222-9200 (208) 222-9201 (208) 222-9202 (208) 222-9203 (208) 222-9204 (208) 222-9205 (208) 222-9206 (208) 222-9207 (208) 222-9208 (208) 222-9209 (208) 222-9210 (208) 222-9211 (208) 222-9212 (208) 222-9213 (208) 222-9214 (208) 222-9215 (208) 222-9216 (208) 222-9217 (208) 222-9218 (208) 222-9219 (208) 222-9220 (208) 222-9221 (208) 222-9222 (208) 222-9223 (208) 222-9224 (208) 222-9225 (208) 222-9226 (208) 222-9227 (208) 222-9228 (208) 222-9229 (208) 222-9230 (208) 222-9231 (208) 222-9232 (208) 222-9233 (208) 222-9234 (208) 222-9235 (208) 222-9236 (208) 222-9237 (208) 222-9238 (208) 222-9239 (208) 222-9240 (208) 222-9241 (208) 222-9242 (208) 222-9243 (208) 222-9244 (208) 222-9245 (208) 222-9246 (208) 222-9247 (208) 222-9248 (208) 222-9249 (208) 222-9250 (208) 222-9251 (208) 222-9252 (208) 222-9253 (208) 222-9254 (208) 222-9255 (208) 222-9256 (208) 222-9257 (208) 222-9258 (208) 222-9259 (208) 222-9260 (208) 222-9261 (208) 222-9262 (208) 222-9263 (208) 222-9264 (208) 222-9265 (208) 222-9266 (208) 222-9267 (208) 222-9268 (208) 222-9269 (208) 222-9270 (208) 222-9271 (208) 222-9272 (208) 222-9273 (208) 222-9274 (208) 222-9275 (208) 222-9276 (208) 222-9277 (208) 222-9278 (208) 222-9279 (208) 222-9280 (208) 222-9281 (208) 222-9282 (208) 222-9283 (208) 222-9284 (208) 222-9285 (208) 222-9286 (208) 222-9287 (208) 222-9288 (208) 222-9289 (208) 222-9290 (208) 222-9291 (208) 222-9292 (208) 222-9293 (208) 222-9294 (208) 222-9295 (208) 222-9296 (208) 222-9297 (208) 222-9298 (208) 222-9299 (208) 222-9300 (208) 222-9301 (208) 222-9302 (208) 222-9303 (208) 222-9304 (208) 222-9305 (208) 222-9306 (208) 222-9307 (208) 222-9308 (208) 222-9309 (208) 222-9310 (208) 222-9311 (208) 222-9312 (208) 222-9313 (208) 222-9314 (208) 222-9315 (208) 222-9316 (208) 222-9317 (208) 222-9318 (208) 222-9319 (208) 222-9320 (208) 222-9321 (208) 222-9322 (208) 222-9323 (208) 222-9324 (208) 222-9325 (208) 222-9326 (208) 222-9327 (208) 222-9328 (208) 222-9329 (208) 222-9330 (208) 222-9331 (208) 222-9332 (208) 222-933