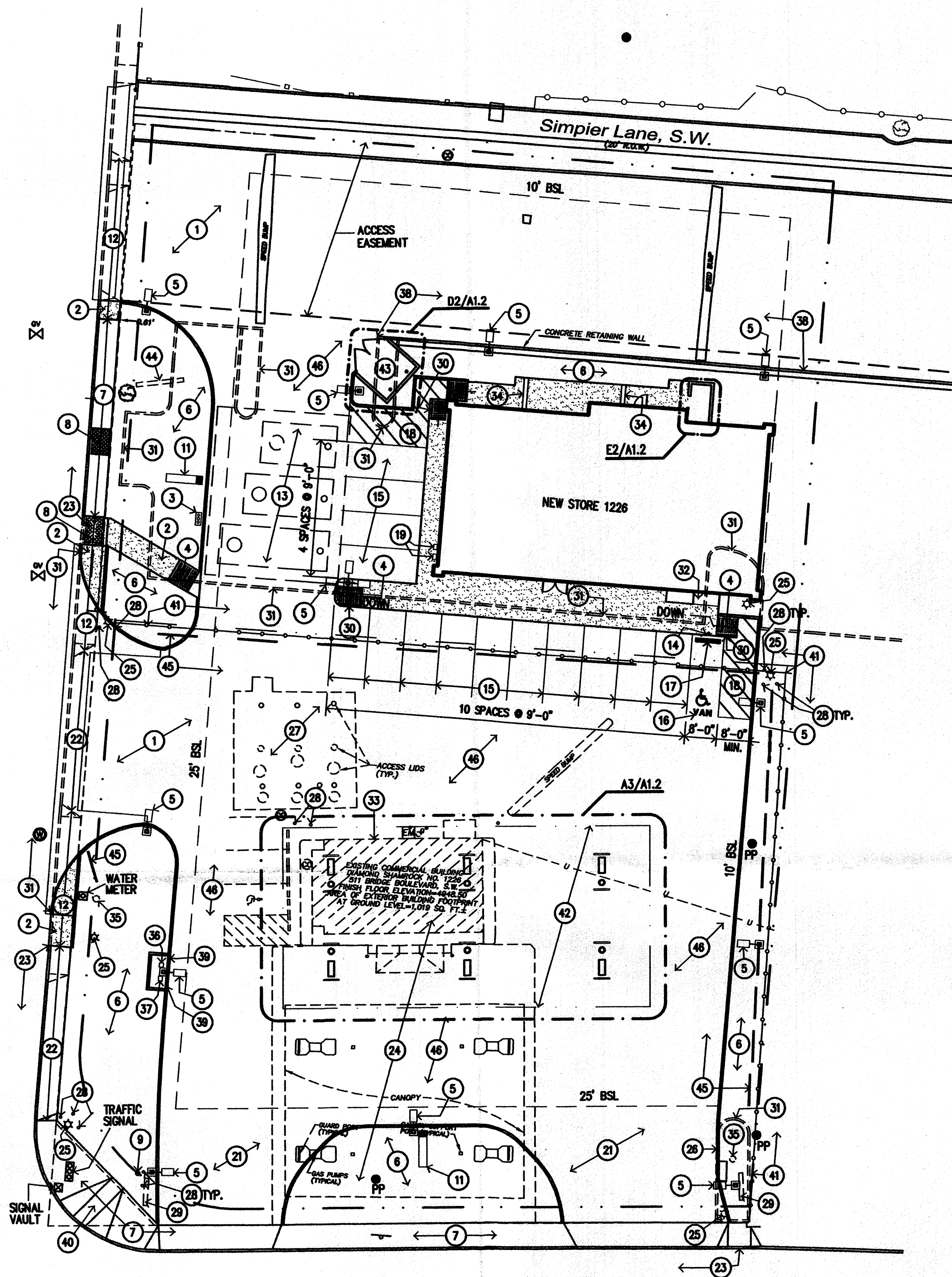


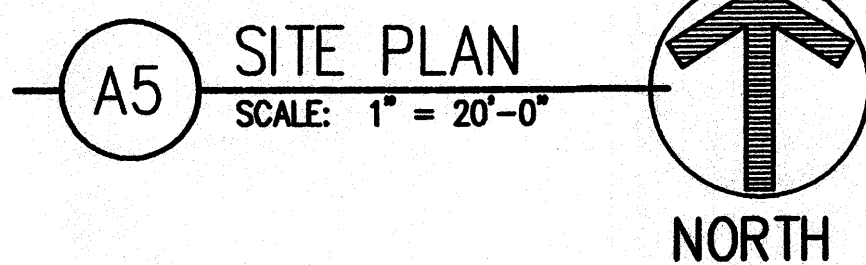
1
2
3
4
5
6

A B C D E F G

8th Street, S.W.
(10' R.O.W. - TYPICAL)



Bridge Boulevard, S.W.
(10' R.O.W. - TYPICAL)



HAZARDOUS MATERIALS NOTES:

H1 Materials contained in the existing building and canopy have been identified as containing asbestos. Asbestos-containing materials (ACM) will be abated by the Owner prior to construction.

GENERAL SITE NOTES

- G1 The existing store will remain open for business during the initial phases of construction. Coordinate phasing, scheduling, and details of site access and security with VEC Area Engineer prior to construction.
- G2 The extent of demolition work is shown on the drawings. It is not possible to show required demolition, remodeling and patching in every detail. The Contractor shall visit the site to determine the extent of demolition and remodeling work, and to familiarize himself with the conditions under which the work shall be performed. No additional compensation will be allowed for work shown or required as a result of work shown, or for patching required as a result of new work or demolition.
- G3 See Civil for additional site demolition and construction requirements.
- G4 Provide chainlink construction fence as needed to restrict public access to the site. Remove fence upon completion of the work.
- G5 Demolition includes removal and disposal of demolished materials. Contractor shall provide dumpster or other suitable means of disposal of demolished materials and construction debris. Dumpster shall be placed in a location approved by the Owner.
- G6 All demolished materials shall be the property of the Contractor and shall be removed from the site and disposed of properly.
- G7 Repair, at no extra cost to the Owner, damage caused to adjacent areas, materials and equipment by demolition and new construction operations.
- G8 Where plumbing items are indicated to be removed, properly terminate all supply, waste and vent lines. Water supply lines shall be removed back to nearest branch line.
- G9 Where electrical devices area shown to be removed, properly terminate all wiring.
- G10 "Paint" means to paint the indicated object using Jones Blair #4400-001 Valero Medium Gray, unless noted otherwise.
- G11 Coating system shall be as specified in VEC standard point specifications "Point Specifications - Valero Image Paint Program."
- G12 Painting includes proper preparation of substrate surface to receive coating. Coordinate additional painting requirements with VEC Area Engineer and coating system manufacturer.

KEYED NOTES

- 1 New concrete paving and driveway aprons per Civil.
- 2 New concrete sidewalk per Civil.
- 3 New vent stacks. Verify location with VEC Area Engineer. Paint.
- 4 New ADA compliant ramp at a maximum of 1:12 slope. Provide grooves in surface of ramp that are 3/4" wide, 1/4" deep and 2-3/4" o.c. Stain ramp contrasting color, using Lithochrome Chemstain Classic, as manufactured by L.M. Scofield, Terra Cotta color. See Civil for other details of construction.
- 5 New area light per Civil. Contractor to provide utility extensions and concrete base. VEC will furnish new prefinished light fixture and 20-foot pole for installation by Contractor.
- 6 Landscape area. See Landscape Plan.
- 7 Sidewalk to remain.
- 8 Metal access cover to remain.
- 9 Existing compressed air device to be removed.
- 10 New concrete curb per Civil.
- 11 New price/ID sign. Paint steel structure, P-1.
- 12 Sidewalk to be removed.
- 13 New underground fuel tanks in new tank excavation by Owner's Fuel System Contractor.
- 14 "Van" accessible parking sign centered in front of accessible parking space, see Civil.
- 15 Stripe new parking spaces per Civil. Provide 4" wide stripes using traffic marking paint, yellow color.
- 16 Accessible handicap parking symbol painted on pavement, white color. One to be "Van" accessible.
- 17 Precast concrete wheelstop.
- 18 Stripe using traffic marking paint 4" side diagonal stripes at 24" o.c., yellow color.
- 19 Public pay telephones. One to be handicap accessible.
- 20 New vent stacks. Paint concrete base and vent pipes.
- 21 Driveway apron to remain.
- 22 Driveway apron to be removed.
- 23 Existing concrete curb to remain.
- 24 Demolish existing store building, surrounding walks, canopies, columns and pump islands. Remove structure completely, including surrounding paving, curbs, walks and bollards. Remove foundation to minimum 12" below finish grade. Properly terminate all utilities.
- 25 Remove light pole, concrete footing and underground components.
- 26 Public pay telephone to be removed by Owners vendor. GC to remove concrete pad, bollards, and utilities.
- 27 Underground fuel tanks to be removed by VEC/Fuel System Contractor.
- 28 Remove metal bollard and footing, typical.
- 29 Demolish existing price ID sign. Remove footings to minimum 12" below finish grade. Terminate utilities.
- 30 Minimum 2" high concrete edge protection, painted yellow.
- 31 Remove concrete curb.
- 32 New ice merchandiser.
- 33 Remove vents stacks, footing and underground components.
- 34 Sidewalk trench drain per Civil.
- 35 Remove concrete base.
- 36 Exterior trash can.
- 37 Air/water station.
- 38 Existing retaining wall to remain.
- 39 Steel pipe bollard per Civil. Paint.
- 40 Curb ramp to remain.
- 41 Remove fence.
- 42 New Canopy.
- 43 New dumpster enclosure.
- 44 Billboard sign to be removed.
- 45 Remove wheelstop, typical.
- 46 Remove all paving.

GENERAL NOTE:
CONTRACTOR TO VERIFY ALL EXISTING CONDITIONS WITH VEC AREA ENGINEER PRIOR TO CONSTRUCTION