

LEGAL DESCRIPTION

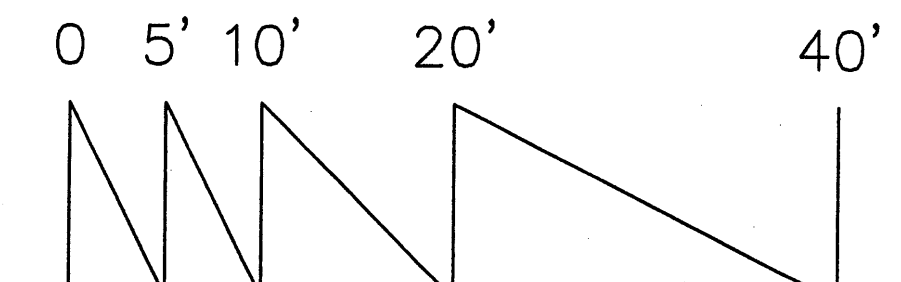
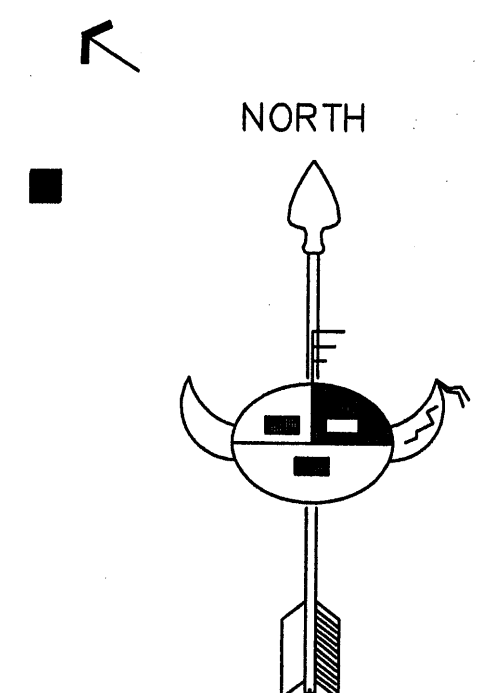
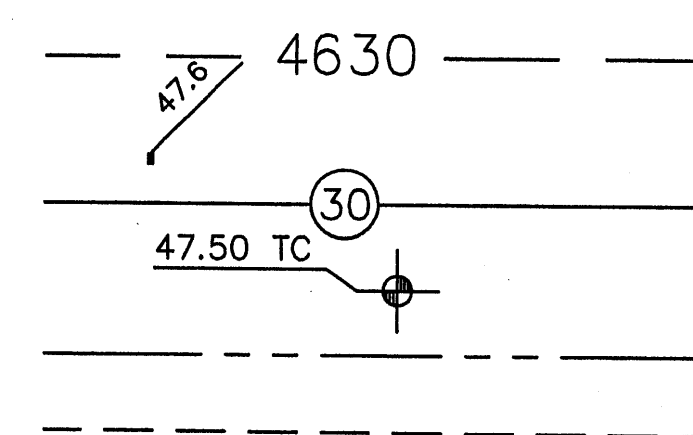
LOT 4, BLOCK 2 N.J. SANCHEZ ADDITION
CITY OF ALBUQUERQUE, BERNALILLO COUNTY, NEW MEXICO

BENCHMARK

C.O.A. BENCHMARK "10-L14"
LOCATED AT THE INTERSECTION OF THIRD STREET S.W. AND BRIDGE BLVD. S.W.
ON THE SOUTHEAST QUADRANT
ELEVATION: 4951.924 NAVD29

SYMBOL LEGEND

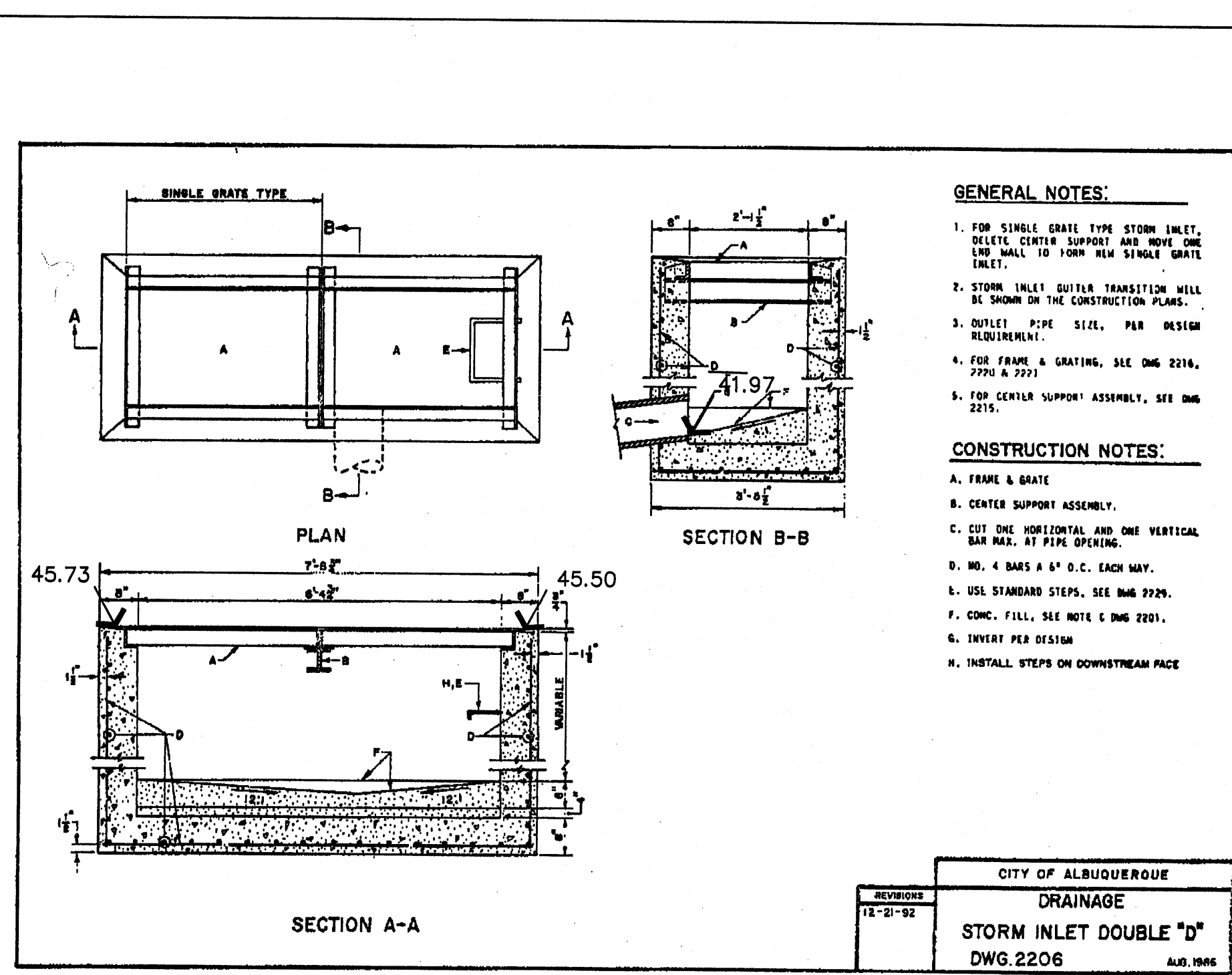
EXISTING CONTOUR
EXISTING SPOT ELEVATION
DESIGN CONTOUR
PROPOSED SPOT ELEVATION
PROPERTY LINE
EASEMENT LINE
FLOW DIRECTION
EXISTING SPOT ELEVATION
DOWN SPOUT



NOTICE TO CONTRACTORS

1. An excavation/barricade permit will be required before beginning any work within City, County, or Village right-of-way. An approved copy of these plans must be submitted at the time of application for these permits.
2. All work detailed on these plans to be done, except as otherwise stated or provided hereon, will be constructed in accordance with "City of Albuquerque Interim Standard Specification for Public Works Construction, 1986," latest revision.
3. Two working days prior to any excavation, the contractor must contact New Mexico One Call System, Inc., 260-1990, for location of existing utilities.
4. Prior to construction, the contractor will excavate and verify the horizontal and vertical locations of all construction. Should a conflict exist, the contractor minimum amount of delay.
5. The contractor will be responsible for coordinating the water shutoff with the Water Division seven (7) working days prior to construction.
6. The contractor will be responsible for performing soil density tests as required by the City of Albuquerque.

APPROVALS FOR	NAME	DATE	TITLE OF PROJECT:
HYDROLOGY			1600 3RD STREET S.W.
ACCEPTANCE: CONSTRUCTION INSPECTOR			



GENERAL NOTES:

1. FOR SINGLE GRATE TYPE STORM INLET, DELETE CENTER SUPPORT AND MOVE ONE END WALL TO FORM NEW SINGLE GRATE INLET.
2. STORM INLET OUTLET TRANSITION WILL BE SHOWN ON THE CONSTRUCTION PLANS.
3. OUTLET PIPE SIZE, PER DESIGN REQUIREMENTS.
4. FOR FRAME & GRATING, SEE DWG 2206, 2207 & 2208.
5. FOR CENTER SUPPORT ASSEMBLY, SEE DWG 2209.

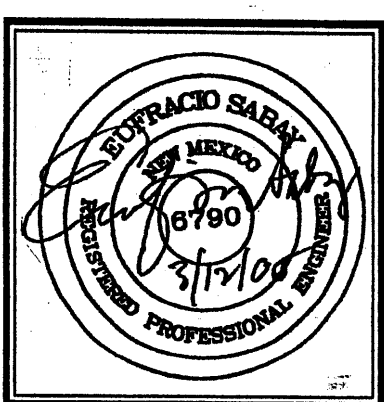
CONSTRUCTION NOTES:

- A. FRAME & GRATE
- B. CENTER SUPPORT ASSEMBLY
- C. CUT ONE HORIZONTAL AND ONE VERTICAL BAR MAX. AT PIPE OPENING.
- D. NO. 4 BARS 8" O.C. EACH WAY.
- E. USE STANDARD STEPS, SEE DWG 2209.
- F. CONC. FILL, SEE NOTE C DWG 2201.
- G. INVERT PER DESIGN
- H. INSTALL STEPS ON DOWNSTREAM FACE

CITY OF ALBUQUERQUE
DRAINAGE
STORM INLET DOUBLE "D"
DWG. 2206
AUG. 1996

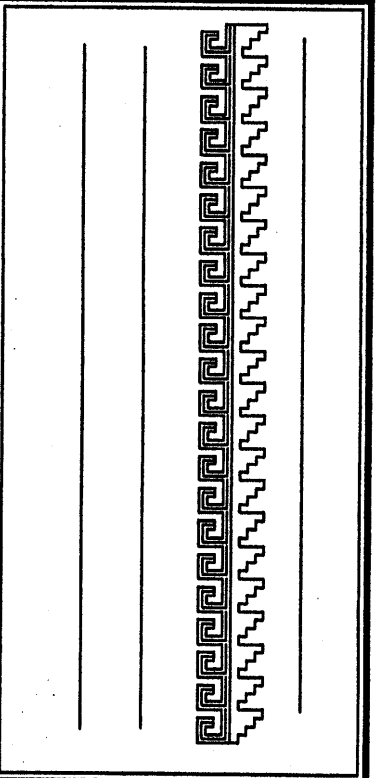
DRAINAGE FACILITIES WITHIN PUBLIC RIGHT-OF-WAY

Scale 1"=10'-0"



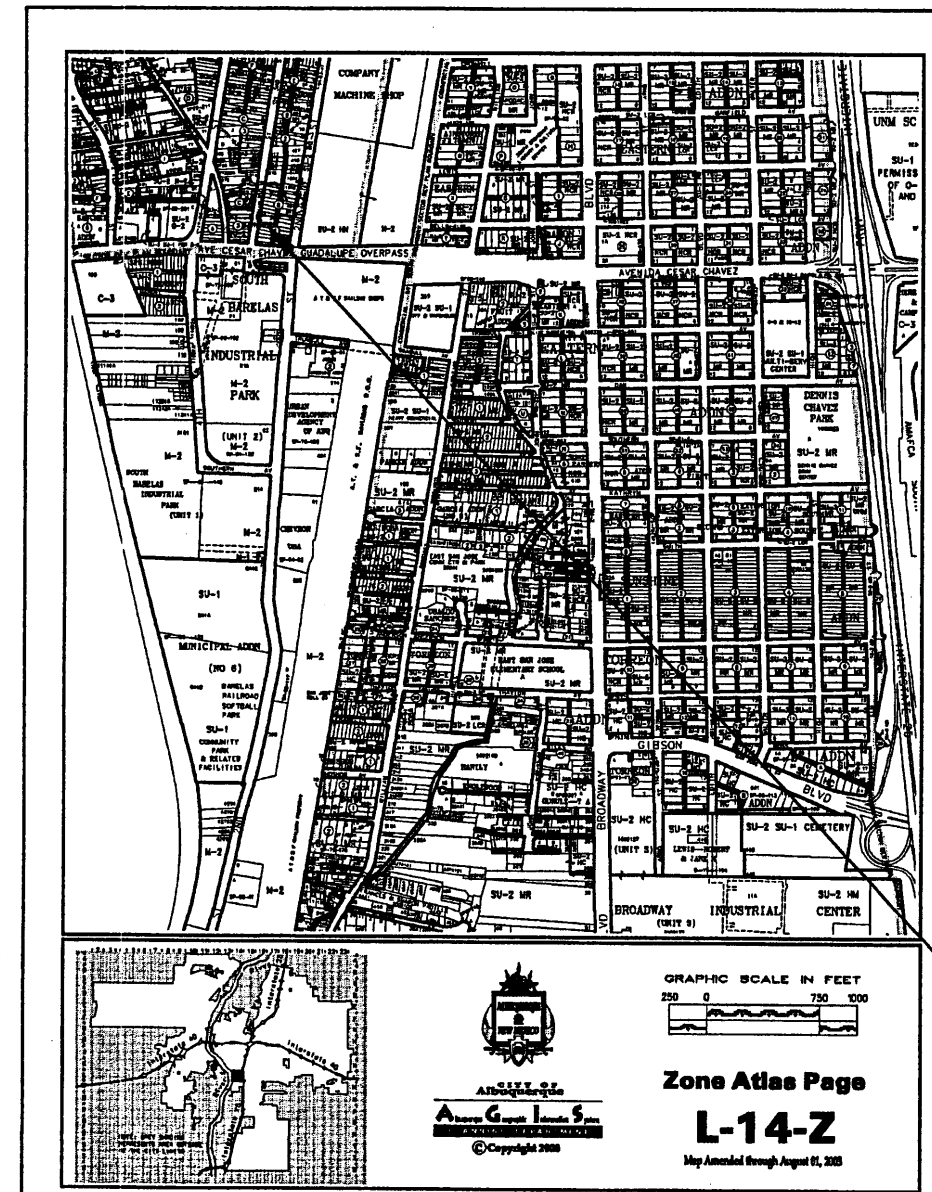
JOB NO:	XXXXXX
DATE:	MARCH 2006
REVISIONS	

Sheet Title
DRAINAGE FACILITIES WITHIN PUBLIC RIGHT-OF-WAY
Drawn By: HTH/BJM
Checked By:

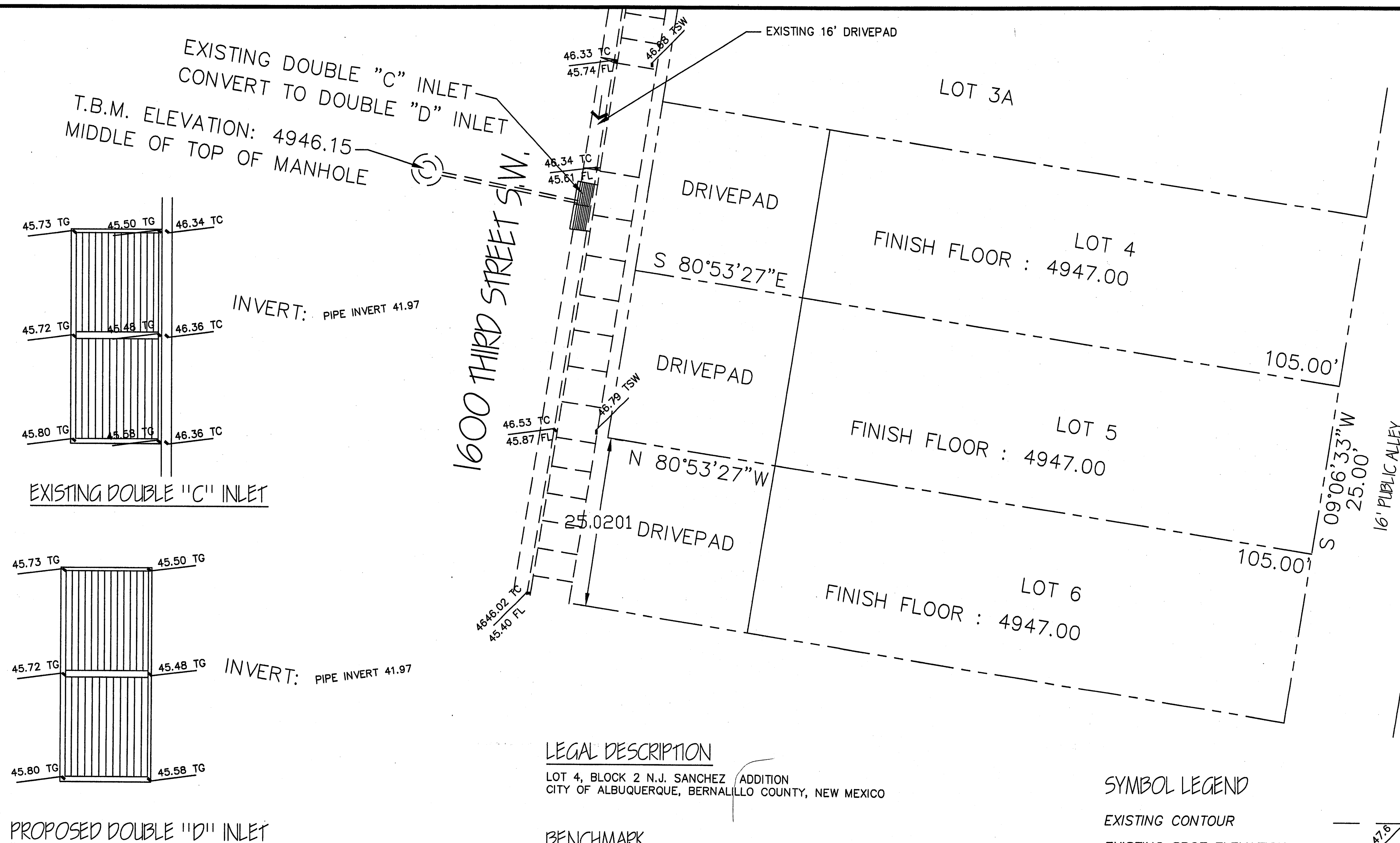
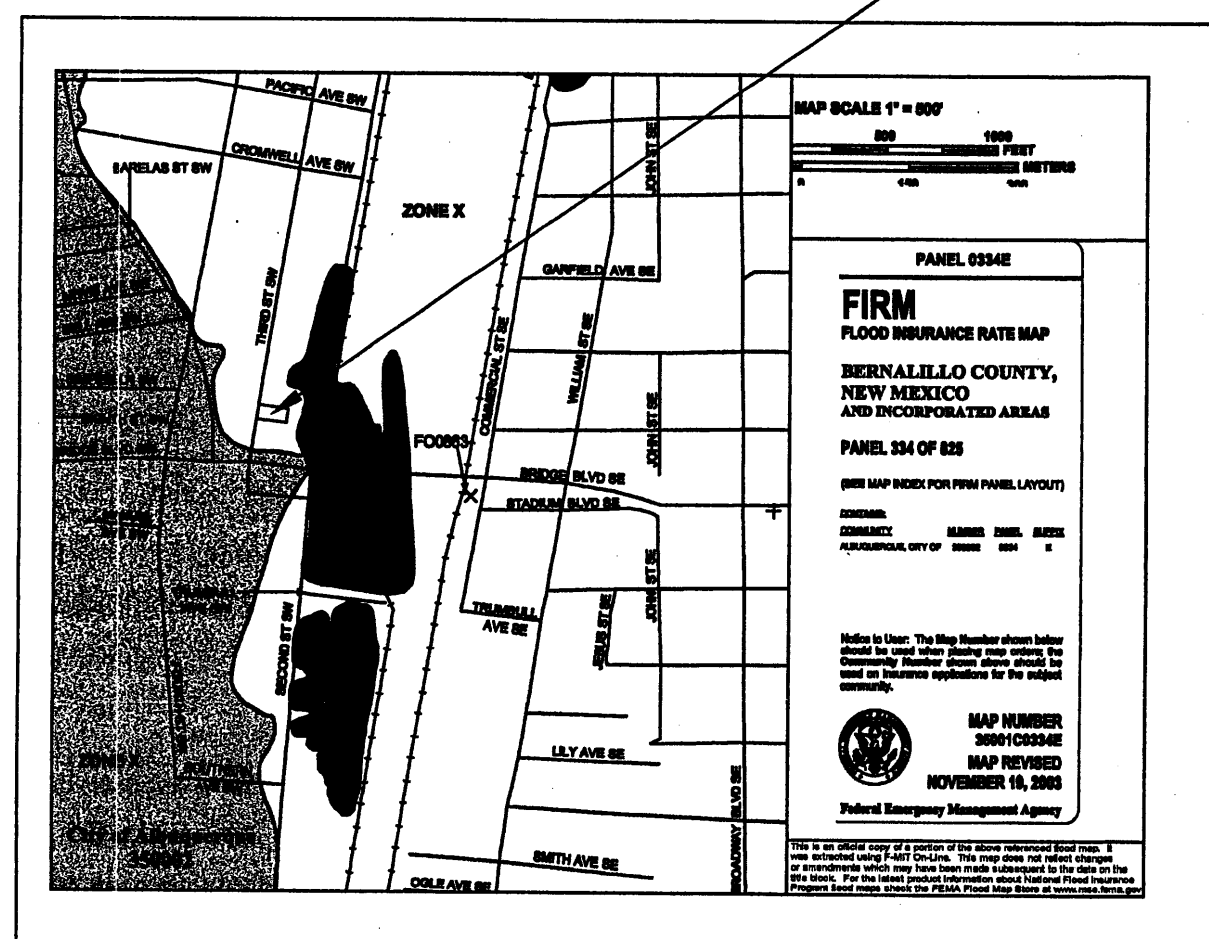


Project Name
ALAN VIGIL TOWNHOUSE
1600 THIRD STREET S.W.
ALBUQUERQUE, NEW MEXICO

SHEET NO.
5019



SITE LOCATION



LEGAL DESCRIPTION

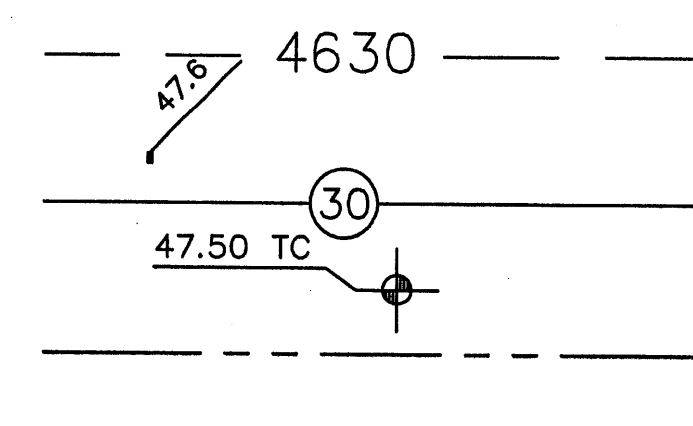
LOT 4, BLOCK 2 N.J. SANCHEZ ADDITION
CITY OF ALBUQUERQUE, BERNALILLO COUNTY, NEW MEXICO

BENCHMARK

C.O.A. BENCHMARK "10-L14"
LOCATED AT THE INTERSECTION OF THIRD STREET S.W. AND BRIDGE BLVD. S.W.
ON THE SOUTHEAST QUADRANT
ELEVATION: 4951.924 NAVD29

SYMBOL LEGEND

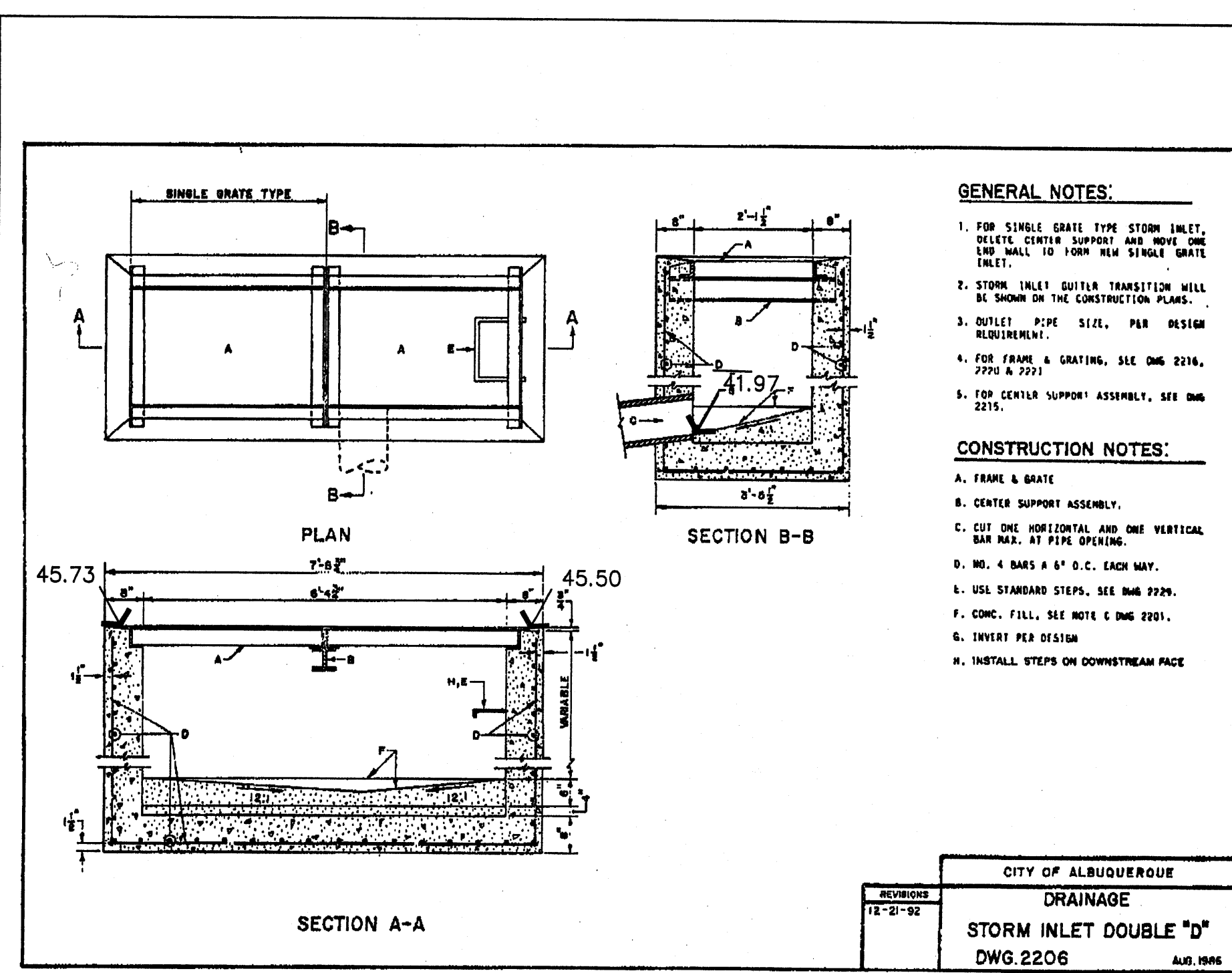
- EXISTING CONTOUR
- EXISTING SPOT ELEVATION
- DESIGN CONTOUR
- PROPOSED SPOT ELEVATION
- PROPERTY LINE
- EASEMENT LINE
- FLOW DIRECTION
- EXISTING SPOT ELEVATION
- DOWN SPOUT



NOTICE TO CONTRACTORS

1. An excavation/barricade permit will be required before beginning any work within City, County, or Village right-of-way. An approved copy of these plans must be submitted at the time of application for these permits.
2. All work detailed on these plans to be done, except as otherwise stated or provided hereon, will be constructed in accordance with "City of Albuquerque Interim Standard Specification for Public Works Construction, 1986," latest revision.
3. Two working days prior to any excavation, the contractor must contact New Mexico One Call System, Inc., 260-1990, for location of existing utilities.
4. Prior to construction, the contractor will excavate and verify the horizontal and vertical locations of all construction. Should a conflict exist, the contractor minimum amount of delay.
5. The contractor will be responsible for coordinating the water shutoff with the Water Division seven (7) working days prior to construction.
6. The contractor will be responsible for performing soil density tests as required by the City of Albuquerque.

APPROVALS FOR	NAME	DATE	TITLE OF PROJECT:
HYDROLOGY			1600 3RD STREET S.W.
ACCEPTANCE: CONSTRUCTION INSPECTOR			



GENERAL NOTES:

1. FOR SINGLE GRATE TYPE STORM INLET, CHECK CENTER SUPPORT AND MAKE ONE END HALL TO FOUR HALL SINGLE GRATE INLET.
2. STORM INLET GRATE TRANSITION WILL BE SHOWN ON THE CONSTRUCTION PLANS.
3. OUTLET PIPE SIZE, PER DESIGN RECOMMENDATION.
4. FOR FRAME & GRATING, SEE DWG 2206, 2207 & 2208.
5. FOR CENTER SUPPORT ASSEMBLY, SEE DWG 2209.

CONSTRUCTION NOTES:

- A. FRAME & GRATE
- B. CENTER SUPPORT ASSEMBLY
- C. CUT ONE HORIZONTAL AND ONE VERTICAL BAR MAX. AT PIPE OPENING
- D. NO. 4 BARS @ 6" O.C. EACH WAY
- E. USE STANDARD STEPS, SEE DWG 2209
- F. CONC. FILL, SEE NOTE E DWG 2201
- G. INVERT PER DESIGN
- H. INSTALL STEPS ON DOWNSTREAM FACE

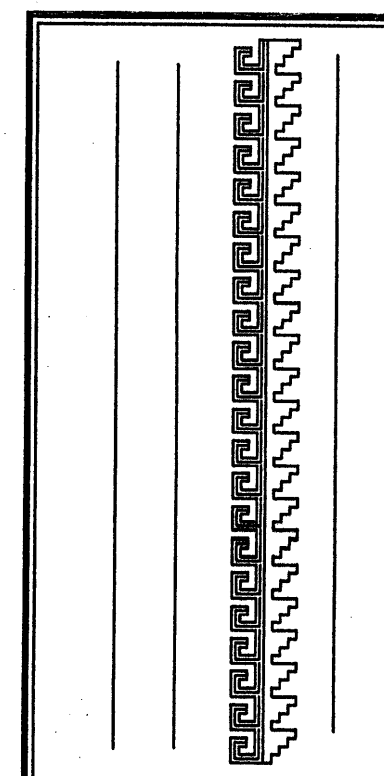
DRAINAGE FACILITIES WITHIN PUBLIC RIGHT-OF-WAY

Scale 1"=10'-0"



JOB NO:	XXXXXX
DATE:	MARCH 2006
REVISIONS	

Sheet Title	DRAINAGE FACILITIES WITHIN PUBLIC RIGHT-OF-WAY
Drawn By:	HTH/BUM
Checked By:	



Project Name
ALAN VIGIL TOWNHOUSE
1600 THIRD STREET S.W.
ALBUQUERQUE, NEW MEXICO

SHEET NO.
5019