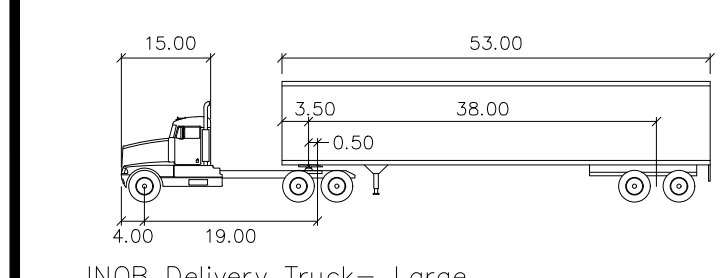
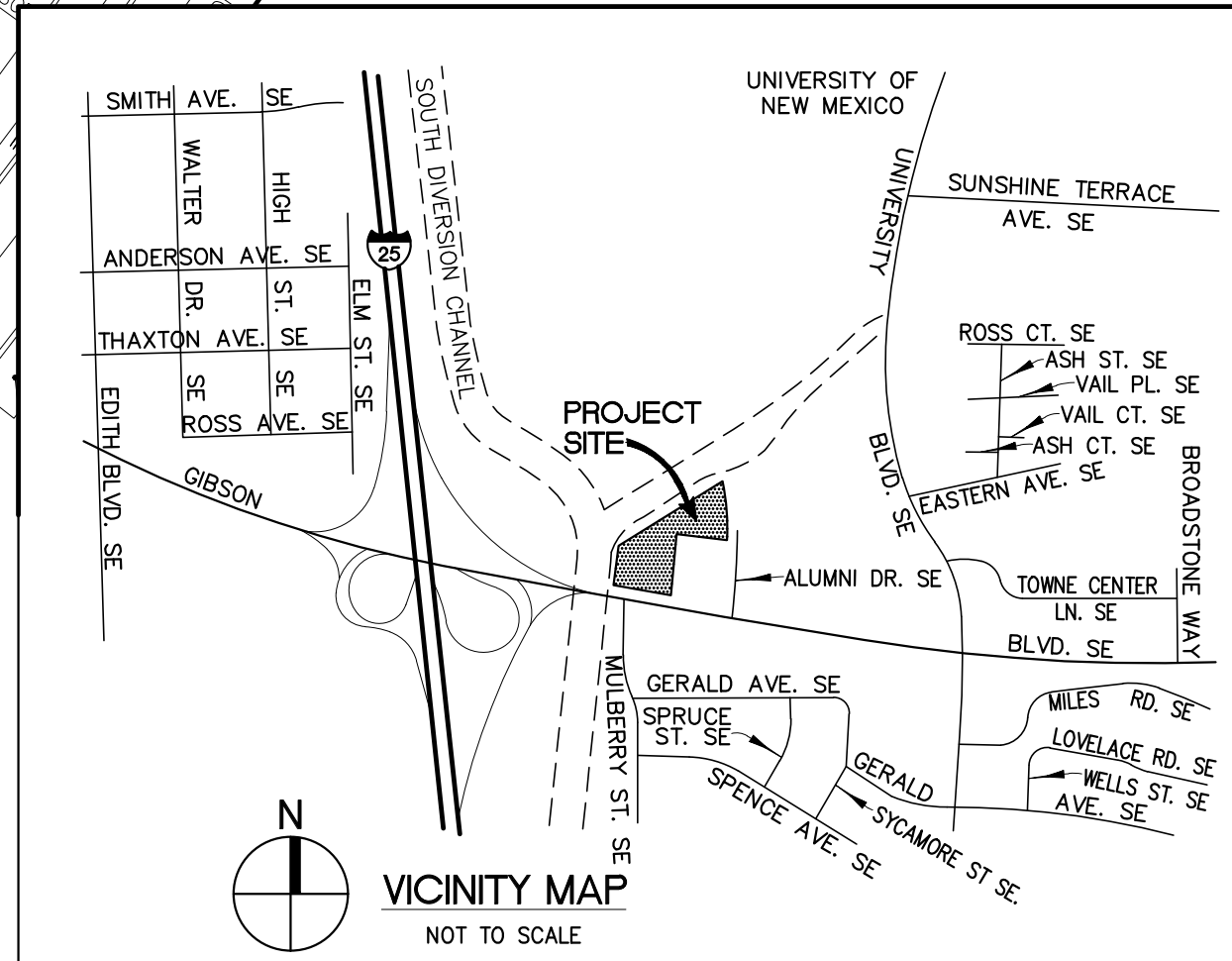


Approved for access by the Solid Waste Department.
 All containers must be made accessible for pick up
 between the hours of 5AM and 8PM.
 Reviewer: ADRIAN MAREZ
 Date: 2-6-26

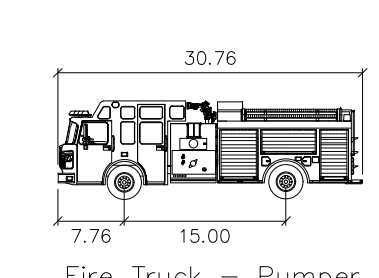


INOB Delivery Truck - Large

Tractor Width	: 8.00	Lock to Lock Time	: 6.0
Trailer Width	: 3.50	Steering Angle	: 25.4
Tractor Track	: 8.00	Articulating Angle	: 75.0
Trailer Track	: 6.50		

LEGEND

- AutoTURN GENERATED BODY ENVELOPE
- PATH OF TRAVEL FOR AN IN-N-OUT BURGER DELIVERY TRUCK.

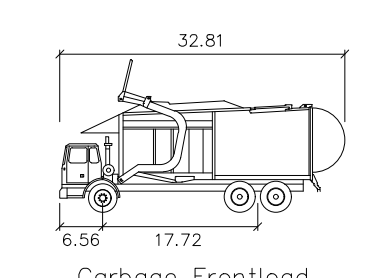


Fire Truck - Pumper

Width	: 7.76	Lock to Lock Time	: 8.00
Track	: 15.00	Steering Angle	: 35.9

LEGEND

- AutoTURN GENERATED BODY ENVELOPE
- PATH OF TRAVEL FOR A PUMPER FIRE TRUCK.



Garbage Frontload

Width	: 6.56	Lock to Lock Time	: 8.53
Track	: 17.72	Steering Angle	: 27.7

LEGEND

- AutoTURN GENERATED BODY ENVELOPE
- PATH OF TRAVEL FOR A FRONT LOAD SOLID WASTE TRUCK.

IN-N-OUT BURGER

DEVELOPER:
 IN-N-OUT BURGER
 13502 HAMBURGER LANE
 BALDWIN PARK, CA 91706
 CONTACT: TODD SMITH
 PHONE: 626 813-5399
 CONTACT: DANIEL POCUIS
 PHONE: 626 813-8275

Underground Service Alert

Call: Toll Free
811
 TWO WORKING DAYS
 BEFORE YOU DIG

REVISIONS

▲	
▲	
▲	
▲	
▲	

APOGEE PROJECT NO. _____

Apogee
 Architectural Partners
 A Spill Company
 16775 ADDISON ROAD, SUITE 350
 ADDISON, TX 75001
 PH: (469) 980-2322

CIVIL ENGINEER:
MSI ENGINEERING, INC.
 CIVIL ENGINEERS AND LAND SURVEYORS SPECIALIZING IN SITE DEVELOPMENT
 301 NORTH SAN DIMAS AVENUE, SAN DIMAS, CA. 91773
 (909) 305-2395 FAX (909) 305-2397

Aaron D. Pellow
 AARON D. PELLOW R.C.E. 27112

01-28-2026
 DATE

IN-N-OUT BURGER
 NWQ GIBSON BOULEVARD SE
 AND ALUMNI DRIVE SE
 ALBUQUERQUE, NM 87106

TRAFFIC CIRCULATION PLAN

1 OF 2

