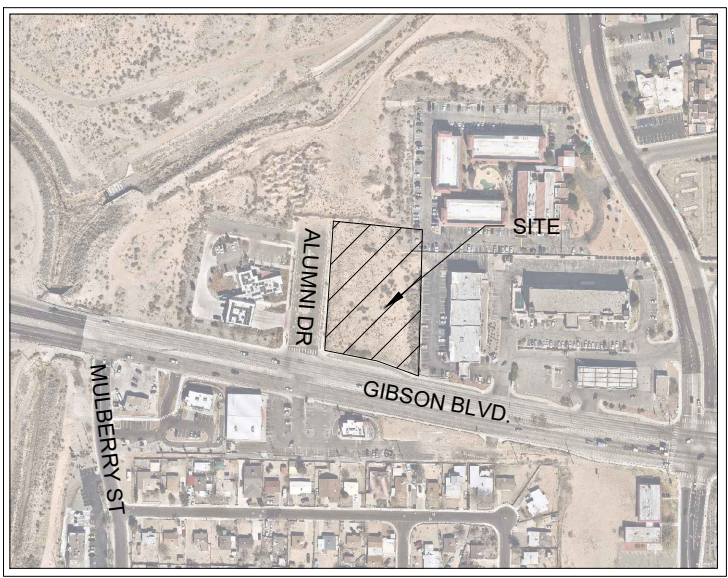
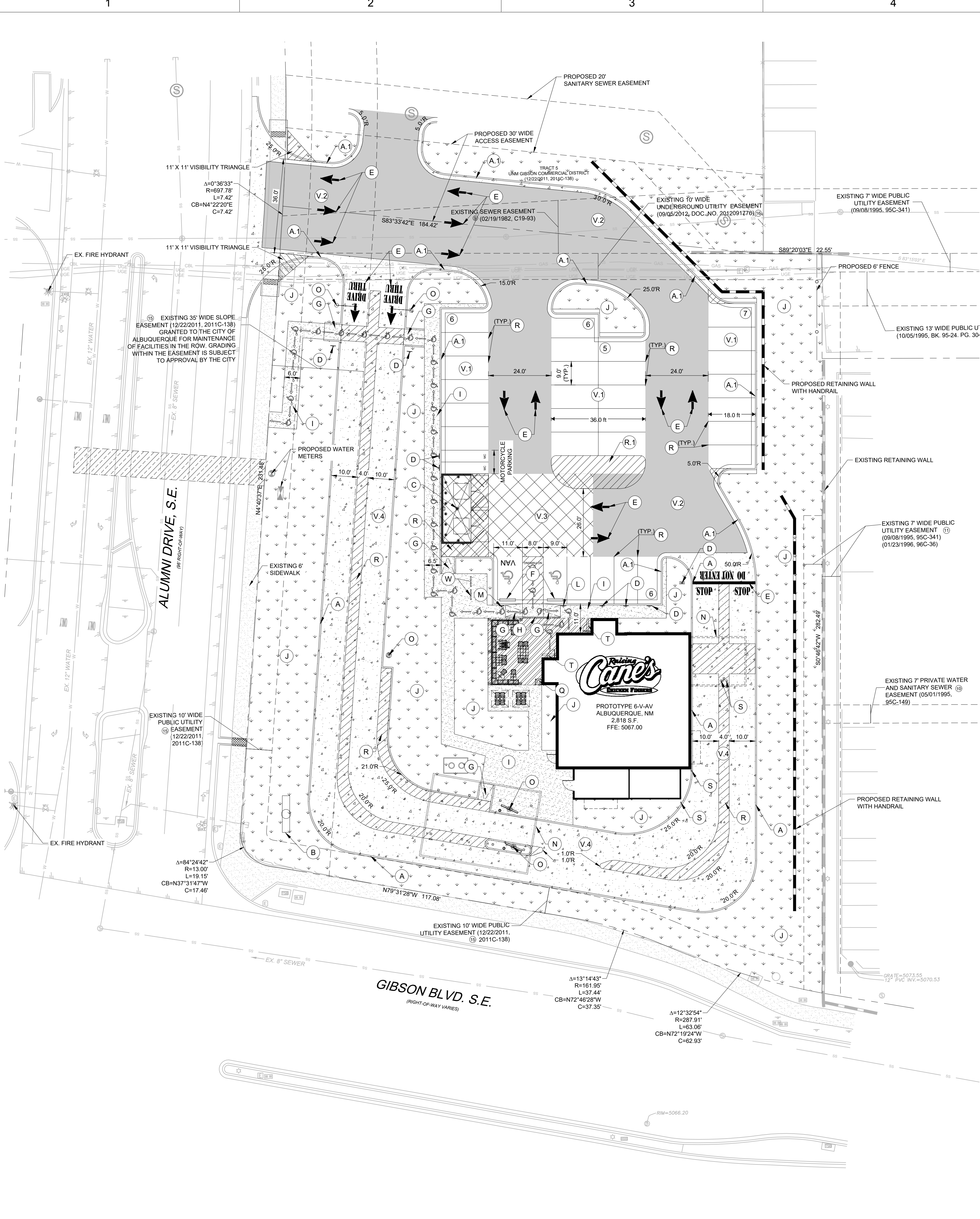
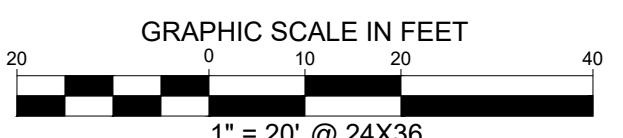
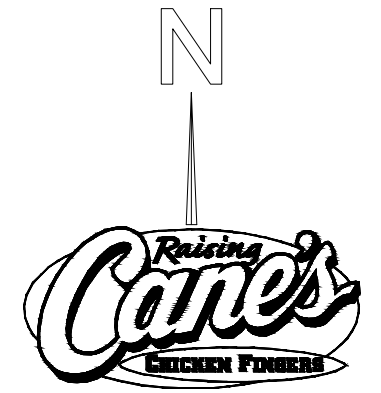


This document, together with the concepts and designs presented herein, as an instrument of service, is intended only for the specific purpose and client for which it was prepared. Reuse of and improper reliance on this document without written authorization and adaptation by Kinkley-Horn and Associates, Inc. shall be without liability to Kinkley-Horn and Associates, Inc.



VICINITY MAP
N.T.S.
ZONE ATLAS: L-15-Z



LEGEND

- PROPERTY LINE
- ADJACENT PROPERTY LINE
- PROPOSED RETAINING WALL
- EXISTING RETAINING WALL
- PROPOSED CONCRETE CURB
- EXISTING CURB
- PROPOSED PARKING COUNT
- LIGHT DUTY ASPHALT PAVEMENT. REFERENCE PAVEMENT DETAILS.
- MEDIUM DUTY ASPHALT PAVEMENT. REFERENCE PAVEMENT DETAILS.
- HEAVY DUTY CONCRETE PAVEMENT. PAVEMENT SHALL BE INTEGRALLY COLORED WITH #860 GRAPHITE (IRON OXIDE) OR EQUAL. REFERENCE PAVEMENT DETAILS.
- MEDIUM DUTY CONCRETE PAVEMENT. PAVEMENT SHALL BE INTEGRALLY COLORED WITH #860 GRAPHITE (IRON OXIDE) OR EQUAL. REFERENCE PAVEMENT DETAILS.
- PROPOSED CONCRETE SIDEWALK
- PROPOSED LANDSCAPE AREA. REFERENCE LANDSCAPE PLANS FOR PLANTING DETAILS.
- PROPOSED PATIO PAVEMENT. REFERENCE ARCHITECTURAL PLANS FOR DETAILS.
- PROP. ROW PAVEMENT PER CITY OF ALBUQUERQUE REQUIREMENTS.
- ACCESSIBLE ROUTE (LOCATION PURPOSES ONLY, DO NOT PAINT)

SITE KEYNOTES

- INTEGRAL CURB. SEE DETAIL SHEET C8.0
- 6" CURB & GUTTER. REFER TO CITY OF ALBUQUERQUE STANDARD DETAILS.
- PROPOSED CANE'S MONUMENT SIGN LOCATION. REFER TO SIGNAGE PLAN FOR DETAILS.
- RECYCLING/TRASH DUMPSTER LOCATION. REFER TO ARCHITECTURAL PLANS FOR DETAILS OF SCREENING, GATES, BOLLARDS AND MASONRY.
- SITE DIRECTIONAL SIGN. REFERENCE SHEET C5.2 - STRIPING AND SIGNAGE PLAN FOR TYPE.
- DIRECTIONAL PAVEMENT MARKING. REFERENCE SHEET C5.2 - STRIPING AND SIGNAGE PLAN.
- WHEEL STOPS. SEE DETAIL SHEET C8.0.
- BARRIER FREE RAMP. SEE CONSTRUCTION DETAILS C8.0.
- HANDRAIL. REFER TO ARCHITECTURAL DETAILS.
- CONCRETE SIDEWALK. SEE DETAIL SHEET C8.0.
- LANDSCAPE AREA. REFERENCE LANDSCAPE PLANS.
- NOT USED.
- ACCESSIBLE PARKING SIGN REFERENCE SHEET C5.2 - STRIPING AND SIGNAGE PLAN.
- VAN ACCESSIBLE PARKING SIGN REFERENCE SHEET C5.2 - STRIPING AND SIGNAGE PLAN.
- PROPOSED CANOPY. REFER TO ARCHITECTURAL SITE DETAILS.
- DRIVE THRU ORDER BOARD, PRE-ORDER BOARD OR HEIGHT DETECTOR. REFER TO ARCHITECTURAL PLANS FOR DETAILS.
- NOT USED.
- TRASH PAD. REFER TO ARCHITECTURAL SITE DETAILS.
- PAVEMENT STRIPING. REFERENCE SHEET C5.2 - STRIPING AND SIGNAGE PLAN.
- PROPOSED STRIPED AREA FOR TRASH AND DELIVERY TRUCKS. 4" SOLID WHITE STRIPING AT 45 DEGREES AT 2' ON CENTER.
- PROPOSED BOLLARD. REFER TO ARCHITECTURE PLANS FOR DETAILS.
- BUSINESS NAME TILES. REFER TO ARCHITECTURAL PLANS FOR DETAILS.
- NOT USED.
- LIGHT DUTY ASPHALT PAVEMENT. SEE SHEET C8.0 - CONSTRUCTION DETAILS.
- MEDIUM DUTY ASPHALT PAVEMENT. SEE SHEET C8.0 - CONSTRUCTION DETAILS.
- HEAVY DUTY CONCRETE PAVEMENT. PAVEMENT SHALL BE INTEGRALLY COLORED WITH #860 GRAPHITE (IRON OXIDE) OR EQUAL. REFERENCE PAVEMENT DETAILS.
- MEDIUM DUTY CONCRETE PAVEMENT. PAVEMENT SHALL BE INTEGRALLY COLORED WITH #860 GRAPHITE (IRON OXIDE) OR EQUAL. REFERENCE PAVEMENT DETAILS.
- BICYCLE RACKS PARKING RACK. REFER TO ARCHITECTURAL PLANS FOR DETAILS.

PARKING / SITE DATA

TRACT 3 UNM GIBSON COMMERCIAL DISTRICT		
EXISTING ZONING	MODERATE INTENSITY (MX-M)	
PROPOSED USE	RESTAURANT W/ DRIVE-THRU	
LOT AREA	56,465 SF / 1.30 AC	
BUILDING AREA	2,818 SF	
FINISHED FLOOR ELEVATION	5067 FT	
PAVEMENT AREA	33,133 SF	
	REQUIRED	PROVIDED
TOTAL PARKING	28 SPACES	30 SPACES
ACCESSIBLE	2 SPACES	2 SPACES
MOTORCYCLE	2 SPACES	2 SPACES
BICYCLE	3 SPACES	3 SPACES
DRIVE-THRU STACKING	12 SPACES	42 SPACES
BUILDING HEIGHT	48' MAX	23.5'
LOT COVERAGE	90% MAX	5.0%
OPEN SPACE	10% MIN	36.3%
PARKING REQUIRED FOR DRIVE-THRU RESTAURANT IS 1 SPACE PER 3 PERSONS NORMALLY ACCOMMODATED		

SITE NOTES

- ALL WORK AND MATERIALS SHALL COMPLY WITH ALL CITY/COUNTY REGULATIONS AND CODES AND O.S.H.A. STANDARDS.
- CONTRACTOR SHALL REFER TO THE ARCHITECTURAL/MEP PLANS FOR SITE LIGHTING & ELECTRICAL PLAN.
- REFERENCE ARCHITECTURAL PLANS FOR DUMPSTER ENCLOSURE DETAILS.
- EXISTING STRUCTURES AND OR UTILITIES WITHIN CONSTRUCTION LIMITS ARE TO BE ABANDONED, REMOVED OR RELOCATED AS NECESSARY.
- SITE BOUNDARY, TOPOGRAPHY, UTILITY AND ROAD INFORMATION TAKEN FROM A SURVEY BY PRECISION SURVEYS, INC. DATED AUGUST 2022.
- ALL PROPOSED PAVING IN CITY R.O.W. AND EASEMENTS TO CONFORM TO CITY STANDARDS.
- PER FEMA MAP NUMBER 35001C0342G DATED SEPTEMBER 26, 2008, THIS SITE IS NOT WITHIN A FLOODPLAIN.
- BUILDING IS NOT FIRE SPRINKLED.
- CITY OF ALBUQUERQUE SOLID WASTE DEPARTMENT IS NOT TO BE HELD LIABLE FOR ANY DAMAGE TO THE ASPHALT PAVEMENT.

DIMENSION NOTES

- ALL CURB RADII ARE TO BE 10' OR 2' UNLESS OTHERWISE NOTED.
- ALL DIMENSIONS ARE TO FACE OF CURB UNLESS OTHERWISE NOTED.
- ALL CURBS SHALL BE 6" STANDARD EXCEPT WHERE OTHERWISE NOTED ON PLANS.
- REFERENCE LANDSCAPE PLANS FOR PROPOSED BUFFERS, SCREENING, AND PLANTING.

BENCHMARKS

BM 1 - A.G.R.S. MONUMENT "24 L16" STANDARD C.O.A. METALLIC DISC
NEW MEXICO STATE PLAN COORDINATES (CENTRAL ZONE-N.A.D. 1983)
N = 1,476,869.02 AND E = 1,529,133.22
ELEV. = 5191.306

CP 1 - SET CP - NO. 5 REBAR WITH PINK PLASTIC CAP "PS 11993"
N = 1,476,978.77 AND E = 1,525,820.52
ELEV. = 5075.26



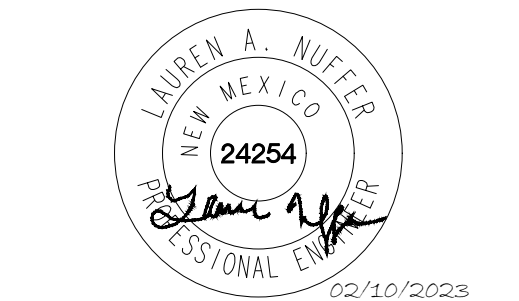
Store:
Gibson & Alumni
Albuquerque, NM
Restaurant #RC972
P6-V-AV

Professional of Record: KEN MCCrackEN

Ken McCracken,
Architect

Architecture • Program Management • Permitting

1101 Central Expressway South
Suite 100
Allen, TX 75013
CONTACT: BARRY GUTTRIDGE
(214) 227-2633
BGUTTRIDGE@PMDGNC.COM



Prototype : P6-V-AV 2022-1.0 RELEASE

Prototype Issue Date: 09.22.2022

Kitchen Issue Date: --

Design Bulletin Updates: --

Date Issued: Bulletin Number: --

REVISIONS:

	09/12/2022	SOLID WASTE REVIEW
1	11/30/2022	UNMA SUBMITTAL
2		
3		
4		
5		
6		
7		
8		
9		

Sheet Title:
SITE KEYNOTE PLAN

Date: 02/10/2023

Project Number: KH #069313462

Drawn By: JCG/LHD

Sheet Number:

C5.0