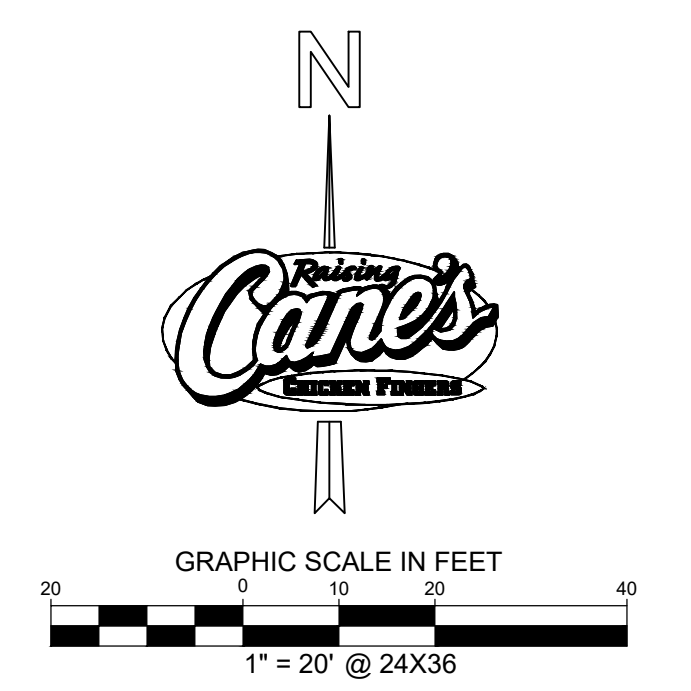
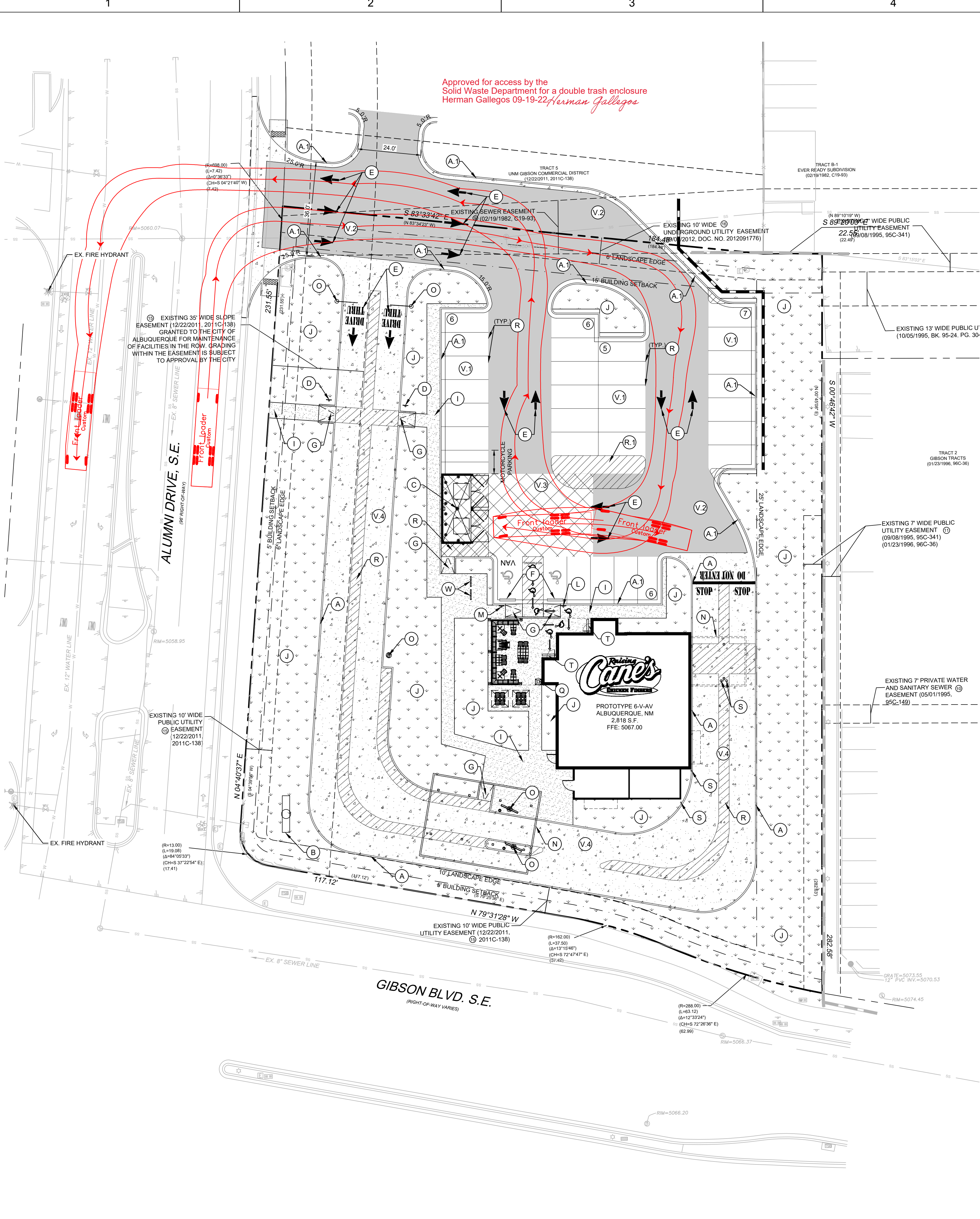


This document, together with the concepts and designs presented herein, is intended only for the specific purpose and client for which it was prepared. Reuse of and improper reliance on this document without written authorization and adaptation by Kimley-Horn and Associates, Inc. shall be without liability to Kimley-Horn and Associates, Inc.



SITE KEYNOTES

A	INTEGRAL CURB. SEE DETAIL SHEET C8.0
A.1	6" CURB & GUTTER. REFER TO ALBUQUERQUE CITY DETAILS.
B	PROPOSED CANE'S MONUMENT SIGN LOCATION. REFER TO SIGNAGE PLAN FOR DETAILS.
C	RECYCLING/TRASH DUMPSTER LOCATION. REFER TO ARCHITECTURAL PLANS FOR DETAILS OF SCREENING, GATES, BOLLARDS AND MASONRY
D	SITE DIRECTIONAL SIGN. REFERENCE SHEET C5.2 - STRIPING AND SIGNAGE PLAN FOR TYPE.
E	DIRECTIONAL PAVEMENT MARKING. REFERENCE SHEET C5.2 - STRIPING AND SIGNAGE PLAN.
F	WHEEL STOPS. SEE DETAIL SHEET C8.0.
G	BARRIER FREE RAMP. SEE CONSTRUCTION DETAILS C8.0.
H	NOT USED.
I	CONCRETE SIDEWALK. SEE DETAIL SHEET C8.0.
J	LANDSCAPE AREA. REFERENCE LANDSCAPE PLANS.
K	NOT USED.
L	ACCESSIBLE STRIPING SIGN REFERENCE SHEET C5.2 - STRIPING AND SIGNAGE PLAN.
M	VAN ACCESSIBLE PARKING SIGN REFERENCE SHEET C5.2 - STRIPING AND SIGNAGE PLAN.
N	PROPOSED CANOPY. REFER TO ARCHITECTURAL SITE DETAILS.
O	DRIVE THRU ORDER BOARD, PRE-ORDER BOARD OR HEIGHT DETECTOR. REFER TO ARCHITECTURAL PLANS FOR DETAILS.
P	NOT USED.
Q	TRASH PAD. REFER TO ARCHITECTURAL SITE DETAILS.
R	PAVEMENT STRIPING. REFERENCE SHEET C5.2 - STRIPING AND SIGNAGE PLAN.
R.1	PROPOSED STRIPED AREA FOR TRASH AND DELIVERY TRUCKS. 4" SOLID WHITE STRIPING AT 45 DEGREES AT 2' ON CENTER.
S	PROPOSED BOLLARD. REFER TO ARCHITECTURE PLANS FOR DETAILS.
T	BUSINESS NAME TILES. REFER TO ARCHITECTURAL PLANS FOR DETAILS.
U	NOT USED.
V.1	LIGHT DUTY ASPHALT PAVT. SEE SHEET C8.0 - CONSTRUCTION DETAILS.
V.2	MEDIUM DUTY ASPHALT PAVT. SEE SHEET C8.0 - CONSTRUCTION DETAILS.
V.3	HEAVY DUTY CONCRETE PAVT. SEE SHEET C8.0 - CONSTRUCTION DETAILS.
V.4	INTEGRAL COLORED 860 GRAPHITE (IRON OXIDE) STANDARD DUTY CONCRETE PAVEMENT.
W	BICYCLE RACKS PARKING RACK. REFER TO ARCHITECTURAL PLANS FOR DETAILS.

LEGEND

	PROPERTY LINE
	ADJACENT PROPERTY LINE
	PROPOSED CONCRETE CURB
	EXISTING CURB
	PROPOSED PARKING COUNT
	LIGHT DUTY ASPHALT PAVEMENT. REFERENCE PAVEMENT DETAILS.
	MEDIUM DUTY ASPHALT PAVEMENT. REFERENCE PAVEMENT DETAILS.
	HEAVY DUTY CONCRETE PAVEMENT. REFERENCE PAVEMENT DETAILS.
	INTEGRAL COLORED 860 GRAPHITE (IRON OXIDE) STANDARD DUTY CONCRETE PAVEMENT
	PROPOSED SIDEWALK PAVEMENT. SEE CONSTRUCTION DETAILS.
	PROPOSED LANDSCAPE AREA. REFERENCE LANDSCAPE PLANS FOR PLANTING DETAILS.
	ACCESSIBLE ROUTE (LOCATION PURPOSES ONLY, DO NOT PAINT)

PARKING / SITE DATA

TRACT 3	
UNM GIBSON COMMERCIAL DISTRICT	
EXISTING ZONING	MODERATE INTENSITY (MX-M)
PROPOSED USE	RESTAURANT W/ DRIVE-THRU
LOT AREA	56,465 SF / 1.29 AC
BUILDING AREA	2,818 SF
FINISHED FLOOR ELEVATION	5067 FT
PAVEMENT AREA	35,398 SF
TOTAL PARKING	REQUIRED: 28 SPACES, PROVIDED: 30 SPACES
ACCESSIBLE	2 SPACES
MOTORCYCLE	2 SPACES
BICYCLE	3 SPACES
DRIVE-THRU STACKING	12 SPACES
BUILDING HEIGHT	48' MAX, 23.5'
LOT COVERAGE	90% MAX, 5.0%
OPEN SPACE	10% MIN, 35.2%

PARKING REQUIRED FOR DRIVE-THRU RESTAURANT IS 1 SPACE PER 3 PERSONS NORMALLY ACCOMMODATED

- ### SITE NOTES
- ALL WORK AND MATERIALS SHALL COMPLY WITH ALL CITY/COUNTY REGULATIONS AND CODES AND O.S.H.A. STANDARDS.
 - CONTRACTOR SHALL REFER TO THE ARCHITECTURAL/MEP PLANS FOR SITE LIGHTING & ELECTRICAL PLAN.
 - REFERENCE ARCHITECTURAL PLANS FOR DUMPSTER ENCLOSURE DETAILS.
 - EXISTING STRUCTURES AND OR UTILITIES WITHIN CONSTRUCTION LIMITS ARE TO BE ABANDONED, REMOVED OR RELOCATED AS NECESSARY.
 - SITE BOUNDARY, TOPOGRAPHY, UTILITY AND ROAD INFORMATION TAKEN FROM A SURVEY BY PRECISION SURVEYS, INC. DATED AUGUST 2022.
 - ALL PROPOSED PAVING IN CITY R.O.W. AND EASEMENTS TO CONFORM TO CITY STANDARDS.
 - PER FEMA MAP NUMBER 35001C0342G DATED SEPTEMBER 26, 2008, THIS SITE IS NOT WITHIN A FLOODPLAIN.
 - BUILDING IS NOT FIRE SPRINKLED.
 - CITY OF ALBUQUERQUE SOLID WASTE DEPARTMENT IS NOT TO BE HELD LIABLE FOR ANY DAMAGE TO THE ASPHALT PAVEMENT.

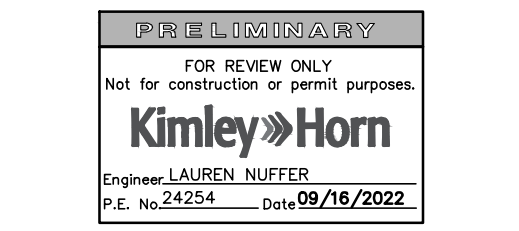
BENCHMARKS

BM 1 - A.G.R.S. MONUMENT 74, 1.16" STANDARD C.O.A. METALLIC DISC
NEW MEXICO STATE PLAN COORDINATES (CENTRAL ZONE-N.A.D. 1983)
N=1,476,869.02 AND E=1,529,133.22
ELEV. = 5191.306



Store:
**NEC OF GIBSON BLVD
AND ALUMNI DR
ALBUQUERQUE
NM, 87106**

Professional of Record: NAME
**PM
DESIGN**
Architectural
Solutions Group
1101 Central Expressway South
Suite 100
Allen, TX 75013
CONTACT: EVERETT FIELDS
(469) 619-1164
EFIELDS@PMDGNC.COM



Prototype: P6-V-AV
Prototype Issue Date: --
Design Bulletin Updates: --
Date Issued: -- Bulletin Number: --

80% REVIEW SET

REVISIONS:

1	
2	
3	
4	
5	
6	
7	
8	
9	

Sheet Title:
**SOLID WASTE
PLAN**
Date: 09/16/2022
Project Number: 069313462
Drawn By: LHD

Sheet Number:

C5.4

