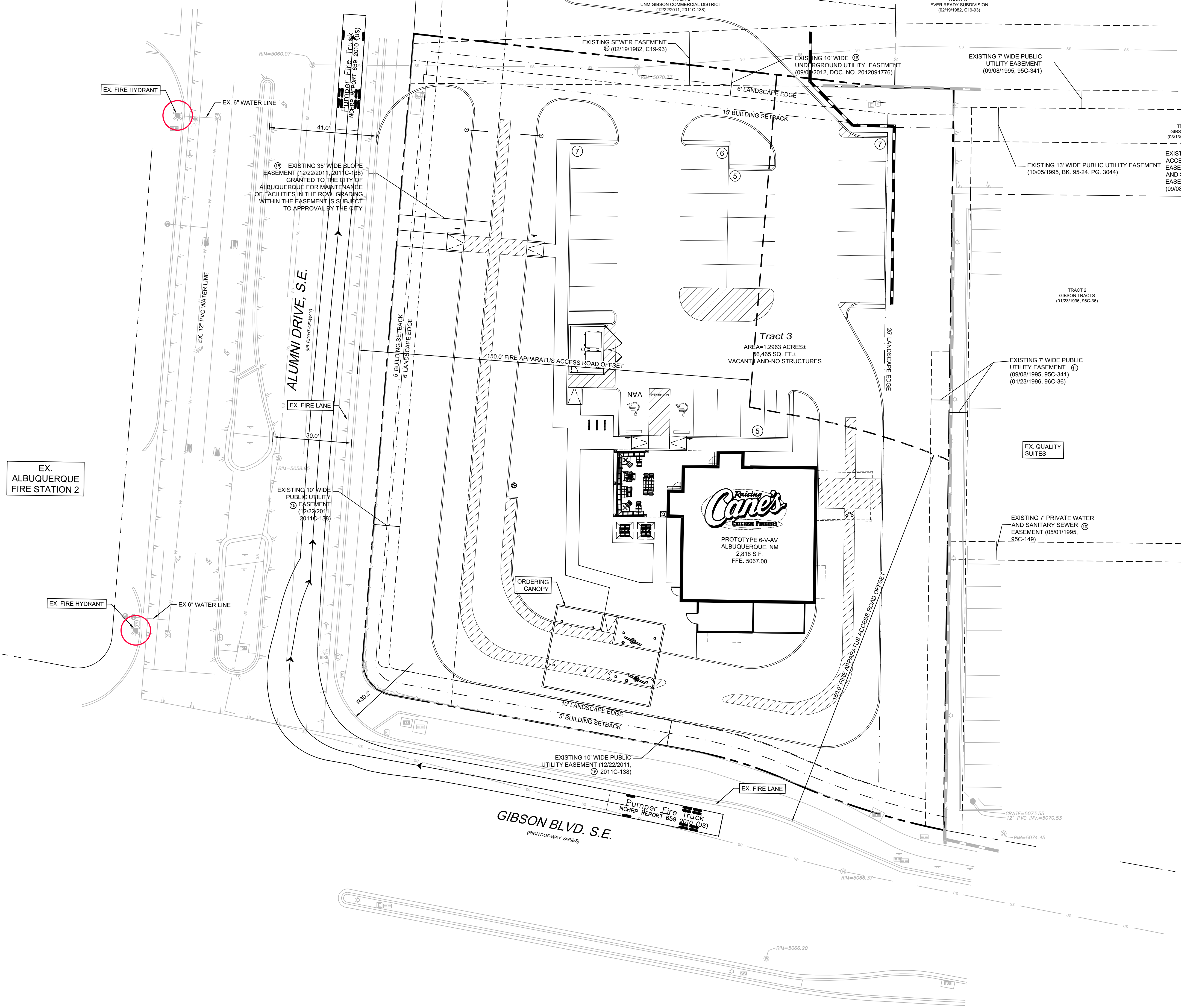


This document, together with the concepts and designs presented herein, as an instrument of service, is intended only for the specific purpose and client for which it was prepared. Reuse of and improper reliance on this document without written authorization and adaptation by Kinley-Horn and Associates, Inc. shall be without liability to Kinley-Horn and Associates, Inc.

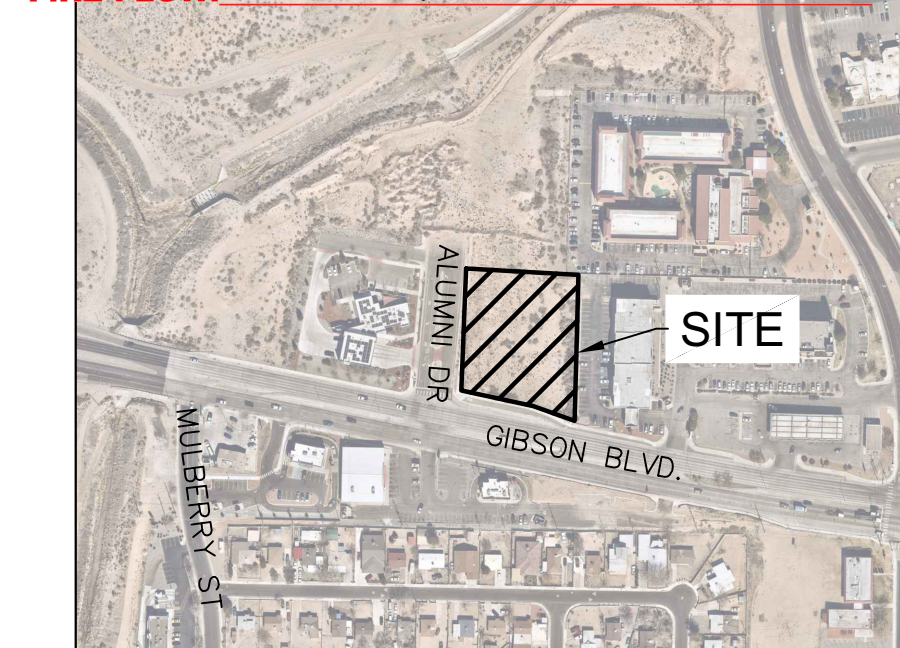
1 2 3 4 5 6

A B C D



ALBUQUERQUE FIRE MARSHAL'S  
DIVISION OFFICE PLANS  
CHECKING DIVISION  
**PERMIT**  
PERMIT NUMBER: FP-22-011533  
APPROVED DATE: 09/09/22  
**APPROVED**

THESE CONSTRUCTION DOCUMENTS HAVE BEEN REVIEWED AND APPROVED BY THE ALBUQUERQUE FIRE MARSHAL'S OFFICE. THESE DOCUMENTS COMPLY WITH THE CITY ORDINANCE, THE INTERNATIONAL FIRE-CODE AND NFPA STANDARDS. THIS PERMIT IS VALID FOR 180 DAYS. FINAL INSPECTION IS REQUIRED.  
**FIRE FLOW: 1500 GPM 1 Fire Hydrant**



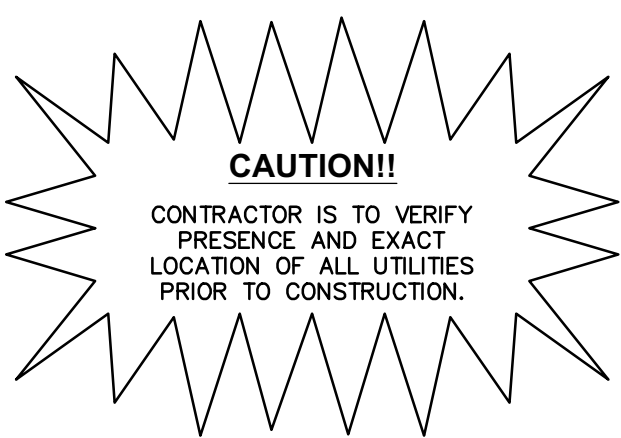
VICINITY MAP  
NOT TO SCALE

### FIRE ONE LEGEND

- PROPERTY LINE
- EXISTING WATER LINE

### FIRE ONE NOTES

- BUILDING AREA: 2,818 SF  
- BUILDING TYPE: V-B - NOT FIRE SPRINKLED  
- OCCUPANCY CLASSIFICATION: B - BUSINESS GROUP  
- STRUCTURE HEIGHT: 23'-6"  
- FIRE FLOW: 1,500 GPM FOR 2 HOURS PER IFC 2015 TABLE B105.1 (2)
- HYDRANTS:  
- MIN. NUMBER OF HYDRANTS: 1  
- MAX. HYDRANT SPACING: 500 FT  
- MAX. DISTANCE FROM STREET OR FRONTAGE TO FIRE HYDRANT: 250 FT
- THE PARKING SURFACE SHALL BE CAPABLE OF SUPPORTING AN IMPOSED LOAD OF A FIRE APPARATUS WEIGHING 75,000 LBS.
- THE MINIMUM DRIVE AISLE WIDTH WILL BE AS SHOWN.
- BUILDING SHALL HAVE APPROVED ADDRESS NUMBERS OR BUILDING IDENTIFICATION PLACED IN A POSITION PLAINLY LEGIBLE AND VISIBLE FROM THE STREET.
- ALL DRIVING SURFACES SHALL NOT EXCEED 10 PERCENT IN GRADE.
- ALL FIRE HYDRANT SUPPLY LINES THAT BRANCH OFF OF THE WATER LINES SHALL BE 6" DIA. UNLESS OTHERWISE NOTED ON THE PLANS.
- WORK SHALL BE IN ACCORDANCE WITH THE APPROVED CONSTRUCTION DOCUMENTS, AND ANY CHANGES MADE DURING CONSTRUCTION THAT ARE NOT IN COMPLIANCE WITH THE APPROVED CONSTRUCTION DOCUMENTS. APPROVED WET STAMPED SHOP DRAWING SHALL BE ONSITE FOR INSPECTIONS.



Store:  
**NEC OF GIBSON BLVD  
AND ALUMNI DR  
ALBUQUERQUE  
NM, 87106**

Professional of Record: NAME  
**PM  
DESIGN**  
Architectural  
Solutions Group  
1101 Central Expressway South  
Suite 100  
Allen, TX 75013  
CONTACT: EVERETT FIELDS  
(469) 619-1164  
EFIELDS@PMDGNC.COM



Prototype :	P6-V-AV
Prototype Issue Date:	--
Design Bulletin Updates:	--
Date Issued:	Bulletin Number:
--	--

**80% REVIEW SET**

REVISIONS:	
1	
2	
3	
4	
5	
6	
7	
8	
9	

Sheet Title:  
**FIRE 1 PLAN**  
Date: 8/30/2022  
Project Number: 069313462  
Drawn By: JCG  
Sheet Number:

F1P