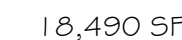


SCALE: 1 inch = 40 ft.



AREA COVERAGE:
 AREA 1.52 AC or 66,211.2 SF
 AREA (Building Envelope) - 4,228 SF
 NET AREA 61,983.2 SF @ 15% = 9,297.48 SF REQUIRED
 33,189.5 ± SF AS SHOWN

LANDSCAPE COVERAGE:
LANDSCAPE COVERAGE - TREE CANOPIES & PLANTS SHALL COVER A MIN. OF 75%
WITH A MIN. 25% OF GROUND-LEVEL PLANTS (SHRUBS, ORNAMENTAL GRASSES, ETC.)
9,297.48 SF @ 75% = 6,973.11 SF REQUIRED
TREE CANOPY ON-SITE COVERAGE 25,082 SF AS SHOWN
GROUND-LEVEL PLANT COVERAGE 5,268 SF AS SHOWN

LANDSCAPE TURF:
NO MORE THAN 10% OF REQUIRED LANDSCAPE AREAS SHALL BE TURF GRASS SPECIES REQUIRING IRRIGATION FOR SURVIVAL AFTER FIRST 2 GROWING SEASONS.
NO TURF GRASS PROPOSED AS SHOWN

PARKING LOT AREA:
AT LEAST 10% OF PARKING LOT AREA WITH 50 OR FEWER PARKING SPACES SHALL BE LANDSCAPED
TOTAL PARKING AREA (-STACKING LANES) 4992 SF @ 10% = 499 SF REQUIRED
PARKING LANDSCAPE AREA: 774 SF AS SHOWN

PARKING LOT TREES:
ONE TREE PER 10 SPACES REQUIRED
22 TOTAL PARKING SPACES/ 10 = 2.2 TREES REQUIRED 3 TREES AS SHOWN

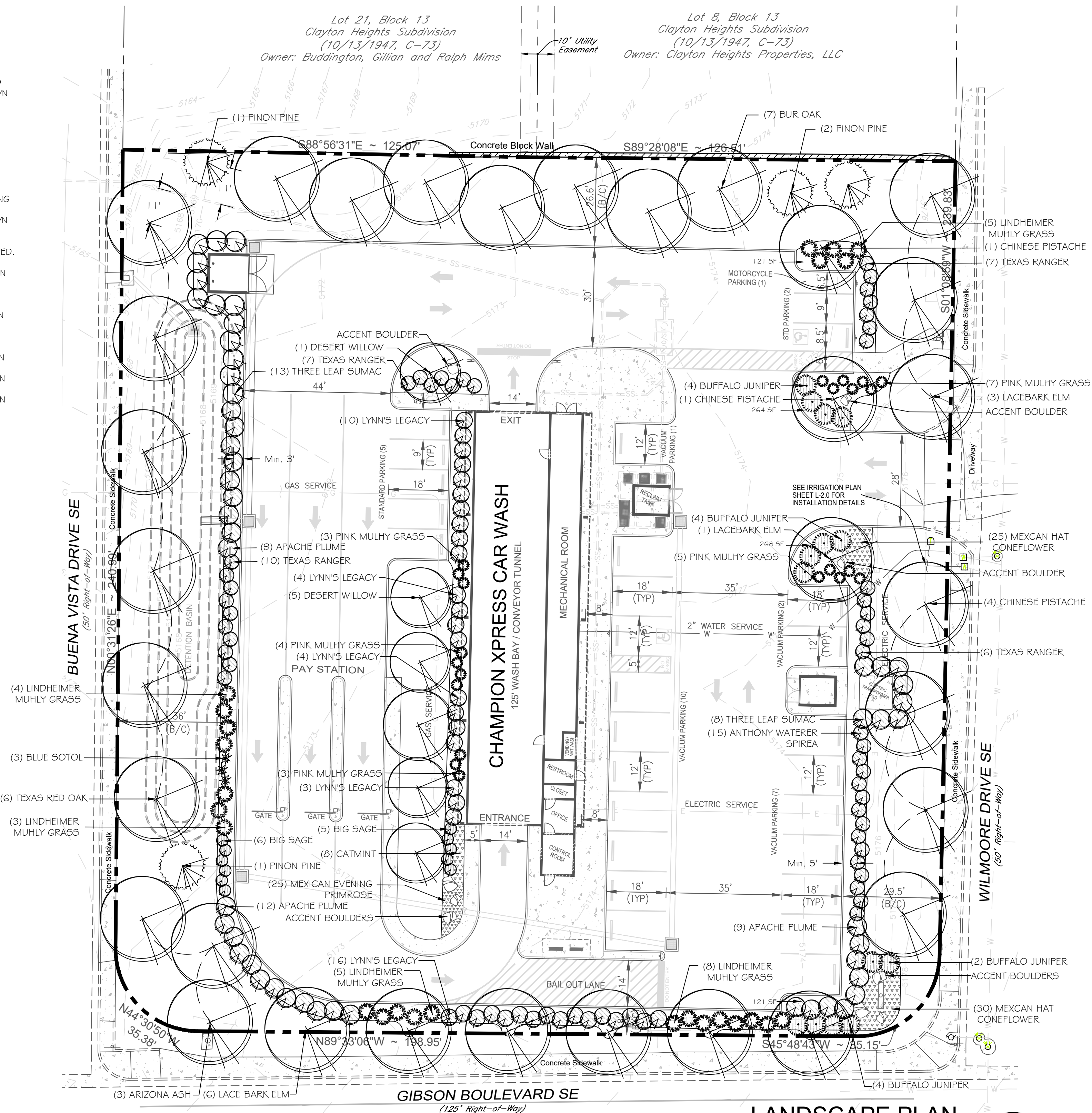
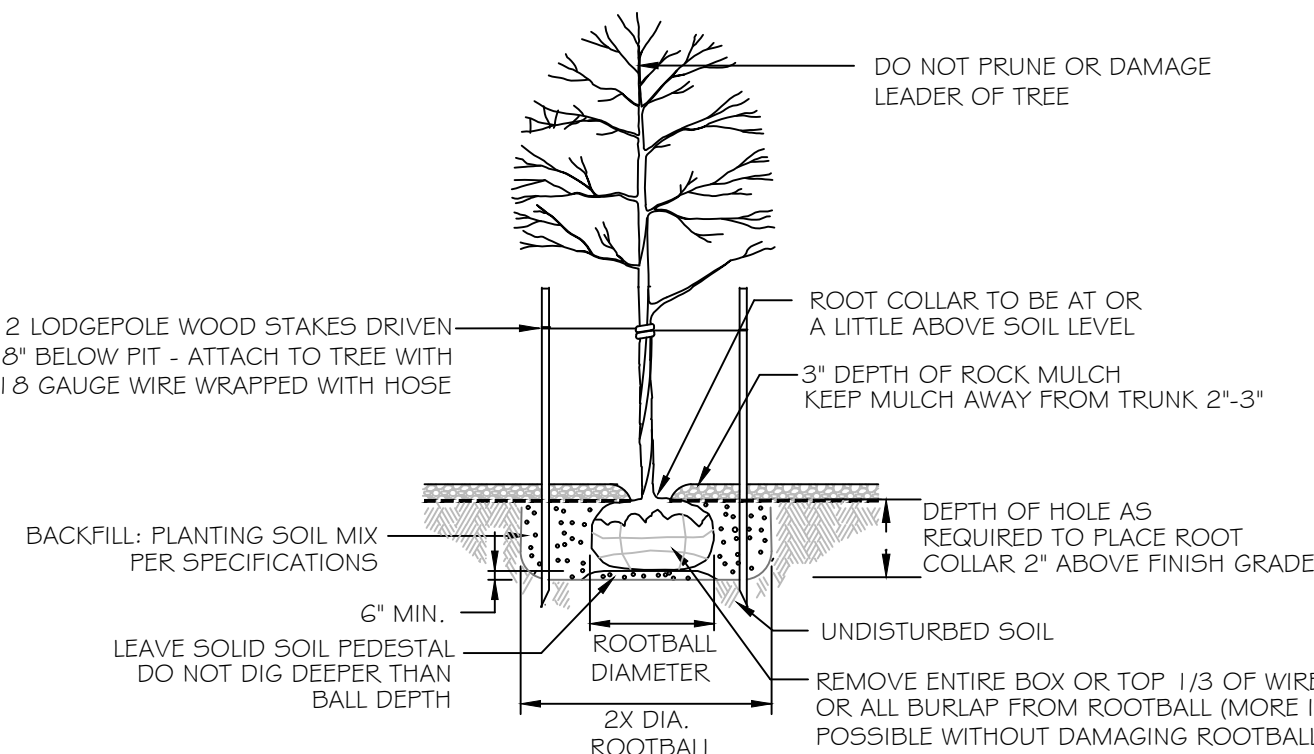
STREET TREES:
ONE TREE PER 35 LF REQUIRED
BUENA VISTA DRIVE 258.68 LF / 35 = 7.39 or 8 TREES REQUIRED 6 TREES AS SHOWN

GIBSON BOULEVARD SE 234.22 LF / 35 = 6.69 or 7 TREES REQUIRED 2 TREES AS SHOWN

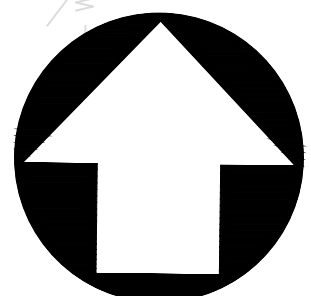
WILMOORE DRIVE SE 257.41 LF / 35 = 7.35 or 8 TREES REQUIRED 2 TREES AS SHOWN

QTY.	PLANT NAME	WATER USE	MINIMUM INSTALLED SIZE	MATURE HEIGHT/ SPREAD	MATURE COVERAGE EACH
	SHADE TREES				
6	DESERT WILLOW - <i>Chilopsis linearis</i> 'Bubba'	RAIN WATER	24" BOXED	25' ht. X 25' spr.	490 SF
3	ARIZONA ASH - <i>Fraxinus velutina</i>	MEDIUM	2" cal. B/B	40' ht. X 35' spr.	550 SF
6	CHINESE PISTACHE - <i>Pistacia chinensis</i>	MEDIUM	2" cal. B/B	35' ht. X 35' spr.	550 SF
4	PINON PINE - <i>Pinus edulis</i>	MEDIUM	2" cal. B/B	30' ht. X 20' spr.	255 SF
7	BUR OAK - <i>Quercus macrocarpa</i>	MEDIUM	2" cal. B/B	60' ht. X 60' spr.	1200 SF
6	TEXAS RED OAK - <i>Quercus texana</i> or buckleyi	MEDIUM	2" cal. B/B	45' ht. X 35' spr.	550 SF
10	LACEBARK ELM - <i>Ulmus parvifolia</i>	MEDIUM	2" cal. B/B	40' ht. X 40' spr.	962 SF
	SHRUBS				
11	BIG SAGE - <i>Artemisia tridentata</i>	LOW	# 5 cont.	4' ht. X 4' spr.	15.5 SF
3	BLUE SOTOL - <i>Dasylinon wheeleri</i>	LOW	# 5 cont.	3' ht. X 3' spr.	7 SF
30	APACHE PLUME - <i>Fallugia paradoxa</i>	LOW	# 5 cont.	6' ht. X 6' spr.	28 SF
14	BUFFALO JUNIPER - <i>Juniperus sabina</i> 'Buffalo'	LOW	# 5 cont.	1' ht. X 6' spr.	20 SF
30	TEXAS RANGER - <i>Leucophyllum frutescens</i>	LOW	# 5 cont.	4' ht. X 4' spr.	15.5 SF
37	LYNN'S LEGACY - <i>Leucophyllum langmaniae</i> 'Lynn's Legacy'	LOW	# 5 cont.	6' ht. X 6' spr.	28 SF
19	PINK MUHLY GRASS - <i>Muhlenbergia capillaris</i>	MEDIUM	# 5 cont.	3' ht. X 3' spr.	7 SF
28	LINDHEIMER MUHLY GRASS - <i>Muhlenbergia lindheimeri</i>	LOW	# 5 cont.	5' ht. X 5' spr.	20 SF
21	THREE LEAF SUMAC - <i>Rhus trilobata</i>	LOW	# 5 cont.	6' ht. X 6' spr.	28 SF
15	ANTHONY WATERER SPIREA - <i>Spiraea bumalda</i> 'Anthony Waterer'	MEDIUM	# 5 cont.	3' ht. X 4' spr.	15.5 SF
	PERENNIALS				
8	CATMINT - <i>Nepeta x faassenii</i> 'Walker's Low'	LOW	# 1 cont.	2' ht. X 2' spr.	3 SF
25	MEXICAN EVENING PRIMROSE - <i>Oenothera berlandieri</i>	LOW	8" pot	12" ht. X 18" spr.	3 SF
55	MEXICAN HAT CONEFLOWER - <i>Ratibida columnifera</i>	LOW	8" pot	2' ht. X 2' spr.	3 SF

TREE PLANTING DETAIL



SCALE: 1 inch = 20 ft.

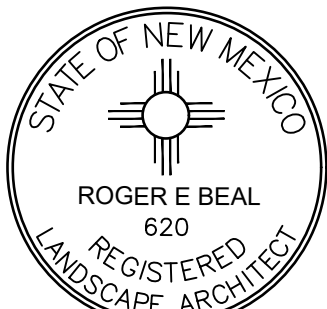


- DIAMETERS OF PLANT MATERIALS AS DRAWN ARE REPRESENTATIVE OF PLANTS AT OR NEAR MATURITY RATHER THAN AT INITIAL PLANTING.
- THE PLANT LIST IS INTENDED AS A GUIDE FOR THE LANDSCAPE CONTRACTOR. IN THE EVENT OF DISCREPANCY BETWEEN THE NUMBER OF PLANTS ON THE PLANT LIST AND THE DRAWING, THE DRAWING SHALL PREVAIL.
- TREES AND SHRUBS SHALL BE NURSERY GROWN UNLESS OTHERWISE APPROVED AND BE HEALTHY AND VIGOROUS PLANTS, FREE FROM DEFECTS, DECAY, DISFIGURING ROOTS, SUN SCALD, INJURIES, ABRASIONS OF THE BARK, PLANT DISEASES, INSECT PEST EGGS, BORERS AND ALL FORMS OF INFESTATIONS OF OR BY NUISANCE INSECTS. PLANT MATERIALS SHALL CONFORM WITH THE CURRENT AMERICAN ASSOCIATION OF NURSESMEN'S STANDARDS AND CONFORM IN GENERAL TO REPRESENTATIVE SPECIES.
- ADJUSTMENTS IN LOCATIONS OF PLANT MATERIALS MAY BE NECESSARY DUE TO NEW OR EXISTING UTILITIES OR SITE OBSTRUCTIONS. ADVISE ARCHITECTS IMMEDIATELY BEFORE ADJUSTMENTS ARE MADE.
- COORDINATE PLANT INSTALLATION WITH IRRIGATION CONTRACTOR.
- ALL SHRUBS OCCURRING IN CONTINUOUS ROW OR FORMAL ARRANGEMENT SHALL HAVE UNIFORM HEIGHT, SPREAD AND HABIT OF GROWTH. FOR PERENNIAL LOCATIONS, FILL AREA WITH QUANTITY OF PLANTS DESIGNATED; EVENLY SPACED LATERAL PLANTING NOT INTERFERED WITH BY PERENNIALS. FOR PERENNIAL REQUIREMENTS, THEREFORE TREES AND OTHER PLANTS BETWEEN 3 AND 8 FEET TALL WILL NOT BE ACCEPTABLE WITHIN THE DESIGNATED AREAS.
- A MINIMUM OF 6" DEPTH OF NEW TOPSOIL SHALL BE PLACED IN ALL NEW PLANT BED AREAS BY LANDSCAPE CONTRACTOR PRIOR TO PLANT INSTALLATION. BACKFILL ALL SHRUBS AND TREES WITH BACKFILL MIX OF ONE PART COMPOST TO THREE PARTS TOPSOIL.
- MULCH TREES AND SHRUBS WITH A MIN. 3" DEPTH OF SHREDDED HARDWOOD MULCH. MULCH PERENNIALS WITH 2" DEPTH. MULCH SHALL EXTEND IN A CONTINUOUS LAYER WITH THE PLANTING BEDS FROM FACE TO FACE OF SITE STRUCTURE - WALKS, CURBS, BUILDING OR OTHER PLANT BED LIMITS. KEEP MULCH A MIN. OF 1" BELOW ADJACENT PAVED SURFACES.
- SMALL PLANTS AND PLANTS PLACED IN PLANT BEDS WITHIN BUILDING BROWN CRUSHED FINES OR APPROVED EQUAL IN DISTURBED AREAS NOT COVERED BY PLANT BEDS WITHIN PROJECT LIMITS AS NOTED ON CIVIL DRAWINGS; INCLUDING OUT TO PAVEMENT EDGES. REFER TO CIVIL DRAWINGS AND VERIFY EXIST WITH PROJECT ARCHITECTS REPRESENTATIVE.
- THE LANDSCAPE CONTRACTOR SHALL MAINTAIN ALL NEW PLANTS, FOR A MIN. OF THE 30 DAYS AFTER ACCEPTANCE OF THE WORK, BY THE PROJECT ARCHITECTS REPRESENTATIVE. THIS INCLUDES REGULAR WATERING AND WEEDING.
- THE LANDSCAPE CONTRACTOR SHALL GUARANTEE ALL PLANT MATERIALS FOR ONE-YEAR FROM DATE OF ACCEPTANCE. PRIOR TO END OF WARRANTY PERIOD, THE LANDSCAPE CONTRACTOR SHALL REPLACE ALL TREES, SHRUBS OR PLANTINGS NOT ALIVE OR IN A HEALTHY GROWING CONDITION.

LANDSCAPE ARCHITECT:

YELLOW SPRINGS DESIGN
PO Box 472 205 PARK MEADOWS DR.
YELLOW SPRINGS, OHIO 45387

(O) 937.767.8199 (M) 937.654.8199
yellowspringsdesign@bizwoh.rr.com
LICENSED IN: OH, KY, PA, IN, IL, MO,
MI, VA, TX, OK, AZ, CO, NM & UT

[illegible]

SITE DEVELOPMENT PLANS FOR
CHAMPION XPRESS
CAR WASH

2020 BUENA VISTA DRIVE SE
CITY OF ALBUQUERQUE, BERNALILLO COUNTY, NEW MEXICO



28 North Cherry Street | Germantown, Ohio 45327 | Phone: 937-388-0060 | BURKHARDTINC.COM
CIVIL ENGINEERING | LAND SURVEYING | NATIONAL RETAIL SITE DEVELOPMENT
TBPE Firm No.: 16636

Design: REB	Proj:
Draw: REB	Dwg:
Check: REB	Tab:
Scale: 1"=20'	

Date: 03.24.2022

Sheet: LANDSCAPE PLAN

Sheet No.:

L-1.0



Know what's below.
Call before you dig.