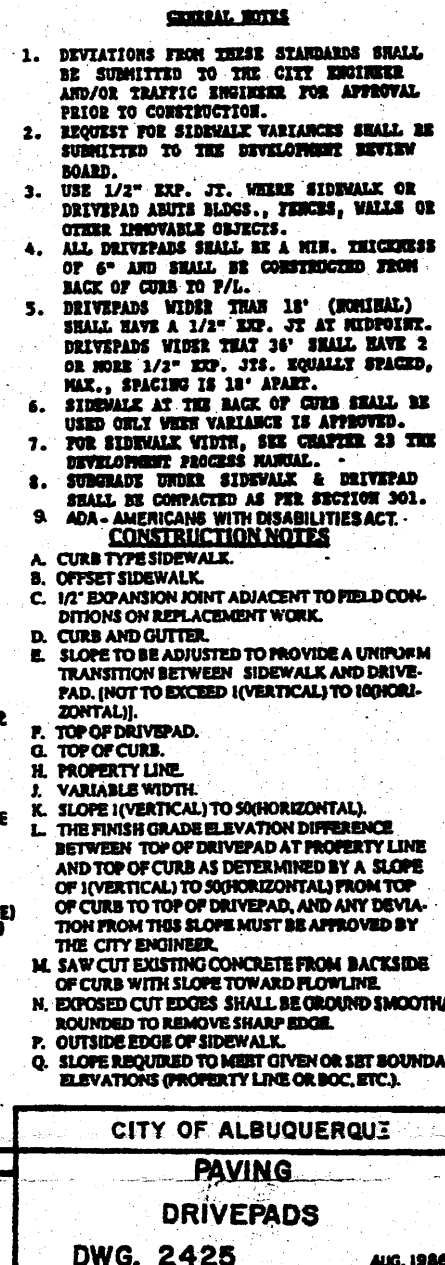
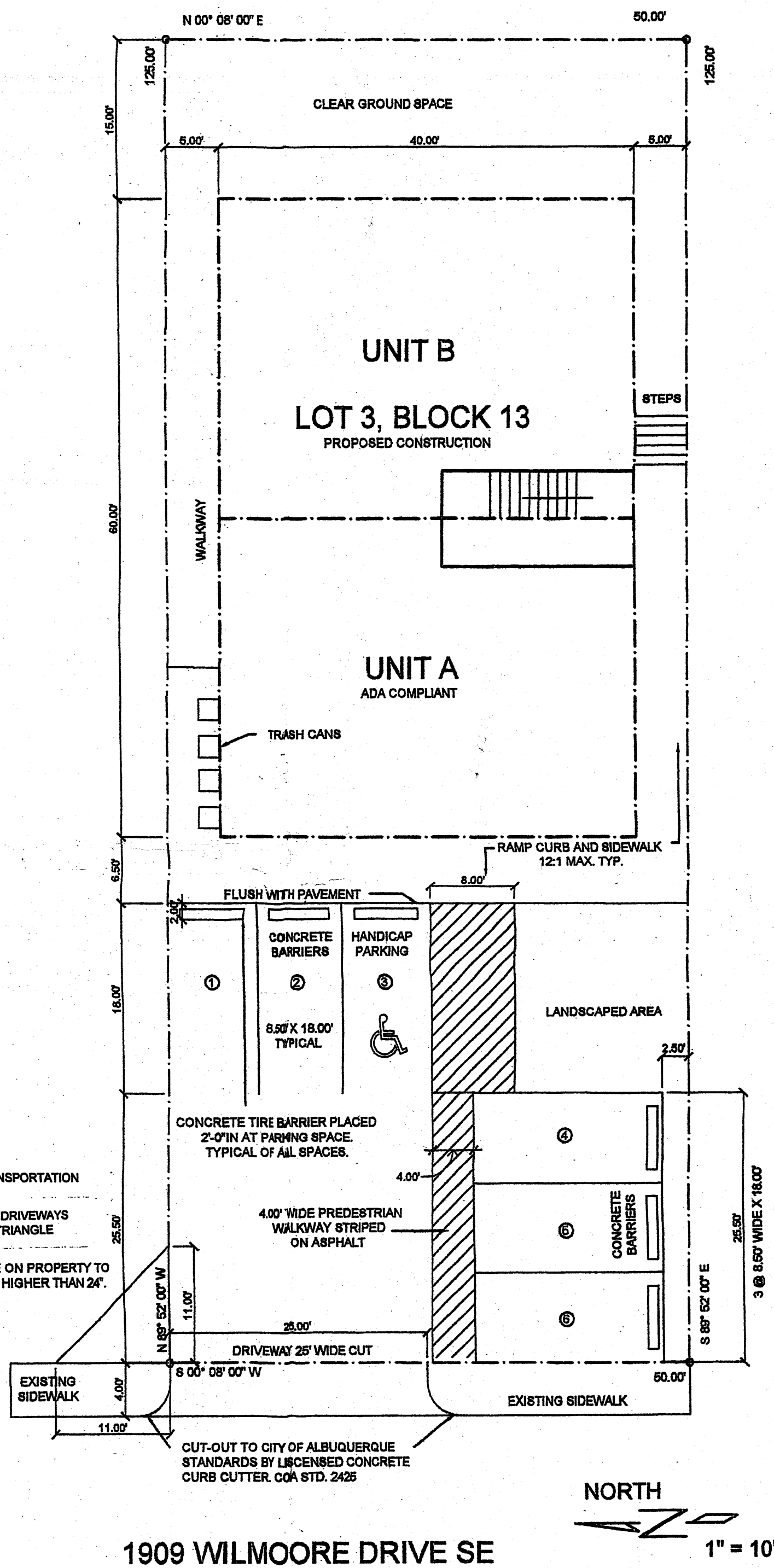


HYDROLOGY
SECTION
27 2009



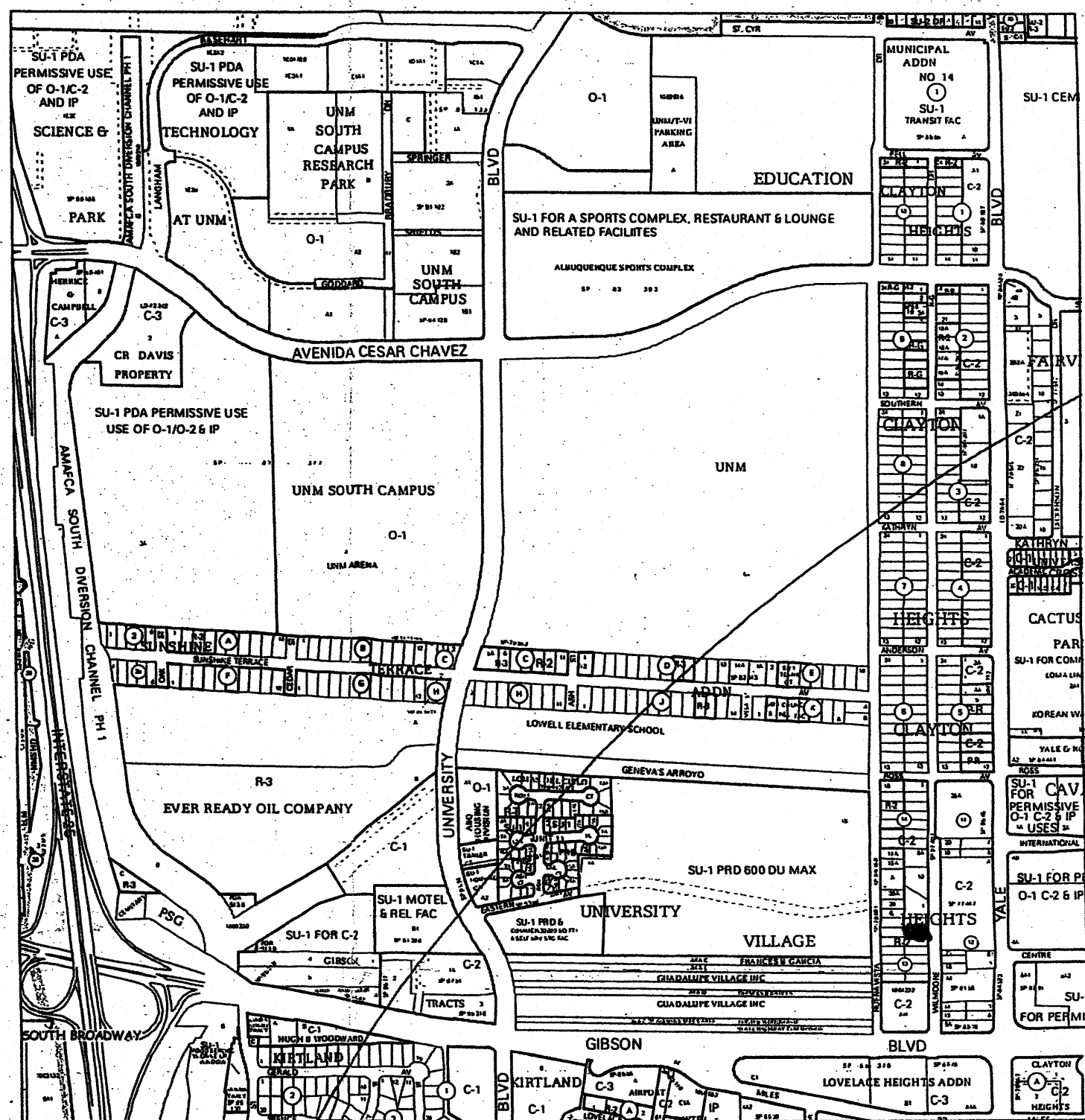
PAVING DRIVEPADS DETAIL

CITY OF ALBUQUERQUE DWG. 2425



TRAFFIC CIRCULATION LAYOUT

LEGAL DESCRIPTION
1909 WILMORE DRIVE SE
LOT 3, BLOCK 13
CLAYTON HEIGHTS
ALBUQUERQUE, NM
BERNALILLO COUNTY



VICINITY MAP ZONE ATLAS L-15

EXECUTIVE SUMMARY

THE PROJECT IS LOCATED AT 1809
WILMOORE DRIVE SE, NORTH OF GIBSON AND
SOUTH OF GIRARD. THE SITE CURRENTLY
CONSISTS ONE VACANT LOT. ONE
APARTMENT 3-PLEX UNIT IS PROPOSED FOR
THE SITE. THE 3-PLEX UNIT HAS 8 PARKING
SPACES. THE DRIVEWAY SHOWN IN THE PLAN
ABOVE. A CROSSLOT DRAINAGE EASEMENT
WILL BE PROVIDED FOR THE PARKING AREA.
NO FORMAL CIRCULATION OF TRAFFIC IS
WARRANTED FOR THIS DEVELOPMENT. THE
PROJECT WILL HAVE A MINIMAL IMPACT ON
ADJACENT SITES. NO VARIANCE IS BEING
REQUESTED FOR THIS SITE.

OFF STREET PARKING:
14-16-3-1 24 (b)

**1 1/2 Parking Spaces per 2 Bedroom Unit,
6 required**

**ALL WHEELCHAIR RAMPS LOCATED
WITHIN THE PUBLIC RIGHT OF WAY
MUST HAVE TRUNCATED DOMES.**

**Public Infrastructure shown
on these plans for information
only and not part of approval.
Separate DRC/Permit approval
and Work Order required.**

RECEIVED
JUN 20 2008
HYDROLOGY
SECTION

	REVISIONS
DATE	BY

TLC
06.06.0

PAIZ WILMOORE
4-PLEX TRAFFIC CIRCULATION LAYOUT
1909 WILMOORE DRIVE SE
ALBUQUERQUE, NM

Joseph B. Burwinkle Jr.
ARCHITECT
3700 Coors Blvd. NW Suite E
Albuquerque, New Mexico 87120
505.345.3850

DRAWN
JB/BJP/STP
CHECKED

DATE
06.06.08

JOB NO.
08-17

SHEET

1

1

... ..

100

DRAINAGE CERTIFICATION

I, DENNIS D. LYNN, NMPE #6712, OF LYNN ENGINEERING & SURVEYING, INC. HEREBY CERTIFY THAT THIS PROJECT HAS BEEN GRADED AND WILL DRAIN IN SUBSTANTIAL COMPLIANCE WITH AND IN ACCORDANCE WITH THE DESIGN INTENT OF THE APPROVED PLAN DATED AUGUST 18, 2008. THE RECORD INFORMATION EDITED ONTO THE ORIGINAL DESIGN DOCUMENT HAS BEEN OBTAINED BY DENNIS D. LYNN, NMPS 7430, OF THE FIRM LYNN ENGINEERING & SURVEYING, INC.. I FURTHER CERTIFY THAT I PERSONALLY VISITED THE SITE ON FEBRUARY 13, 2009 AND HAVE DETERMINED BY VISUAL INSPECTION THAT THE SURVEY DATA PROVIDED IS REPRESENTATIVE OF ACTUAL SITE CONDITIONS AND IS TRUE AND CORRECT TO THE BEST OF MY KNOWLEDGE AND BELIEF. THIS CERTIFICATION IS SUBMITTED IN SUPPORT OF A REQUEST FOR CERTIFICATE OF OCCUPANCY.

THE RECORD INFORMATION PRESENTED HEREON IS NOT NECESSARILY COMPLETE AND INTENDED ONLY TO VERIFY SUBSTANTIAL COMPLIANCE OF THE GRADING AND DRAINAGE ASPECTS OF THIS PROJECT. THOSE RELYING ON THIS RECORD DOCUMENT ARE ADVISED TO OBTAIN INDEPENDENT VERIFICATION OF ITS ACCURACY BEFORE USING IT FOR ANY OTHER PURPOSE.

THIS DRAWING HAS BEEN REVISED IN ACCORDANCE WITH SURVEYING DATA OBTAINED ON FEBRUARY 13, 2009, TO SHOW THE ACTUAL ELEVATIONS AS CONSTRUCTED, TO THE BEST OF MY KNOWLEDGE AND BELIEF.

DENNIS D. LYNN, NMPE #6712
DATE 02/23/2009

GRADING & DRAINAGE PLAN
1909 WILMOORE DRIVE S.E.
ALBUQUERQUE, NEW MEXICO
APRIL 2008

LEGAL DESCRIPTION

LOT 3, BLOCK 13 OF CLAYTON HEIGHTS AS FILED
IN THE OFFICE OF THE COUNTY CLERK, OF BERNALILLO COUNTY,
NEW MEXICO ON OCTOBER 15, 1947, IN BOOK C, PAGE 73.

DRAINAGE PLAN

EXISTING

THE 6250 SQ FT LOT, IS CURRENTLY VACANT, AND UNIMPROVED.
THE LOT DOES NOT ACCEPT OFFSITE FLOWS AND DISCHARGES TO THE STREET.
FIRM MAP 350002 0361E SHOWS ZONE X FOR THE LOT.

PROPOSED

A NEW RESIDENTIAL STRUCTURE IS PROPOSED. THE PROPOSED IMPROVEMENTS WILL DISCHARGE TO THE ADJOINING STREET. THE STORM WATER WILL TRAVEL NORTH TO A DROP INLET APPROXIMATELY 100' NORTH OF THE PROPERTY, THEN IN UNDERGROUND STRUCTURE THROUGH GENEVA'S ARROYO TO THE SOUTH DIVERSION CHANNEL.

CALCULATION INFORMATION

- THE DESIGN STORM USED FOR THESE CALCULATIONS IS THE 100 YEAR 6 HOUR STORM THE DATA IS OBTAINED FROM NOAA ATLAS 2, VOLUME IV, FIGURE 24. THE DEPTH OF RAINFALL IS 2.35" FOR THE 6 HOUR STORM.
- THE AHYMO392 PROGRAM PROVIDED BY AMAFCA WAS USED TO CALCULATE THE DATA. THE INPUT DATA WAS DETERMINED IN ACCORDANCE WITH SECTION 22.2, HYDROLOGY OF THE CITY OF ALBUQUERQUE DEVELOPMENT PROCESS MANUAL.

TP = 0.1333 HOURS USED AS MINIMUM TC = 2 HRS
FACTORS USED ARE TREATMENT:
DEVELOPED BASIN - A 0.00% B 00% C 21.94% D 78.06%
UNDEVELOPED BASIN - A 0.00% B 00% C 100.00% D 0.00%

DRN	SIZE	IMPERVIOUS	P100YR6HR	VOL100	DISCHARGE
BASIN	X	X	6 HOUR	PEAK	CFS
DEVELOPED	6250 SQ FT	78.06%	2.35'	0.023 AC FT	0.55
UNDEVELOPED	6250 SQ FT	0.00%	2.35'	0.013 AC FT	0.42

SEE SUPPLEMENTAL DATA SHEETS (ATTACHMENTS SHEETS 1 - 4)

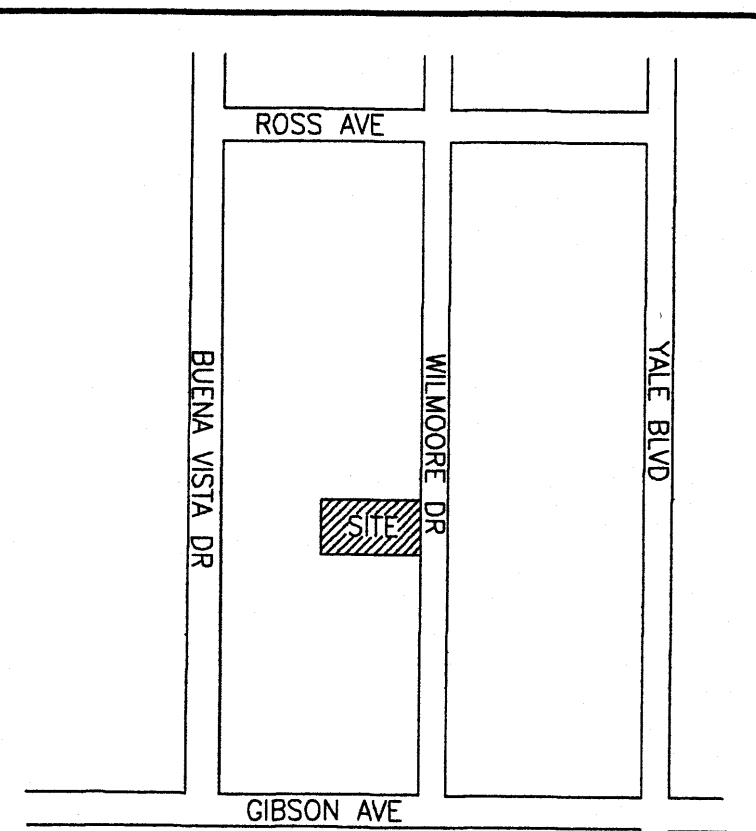
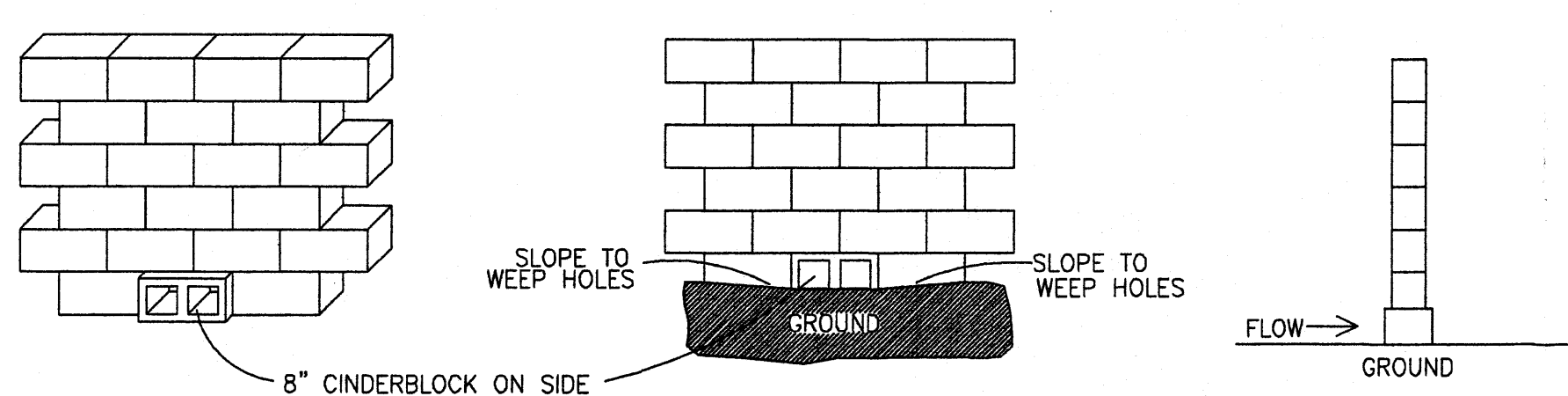
NOTES:

- NEW DRIVEWAYS TO BE BUILT USING COA STANDARD DRAWING 2425.
- IF SOLID MASONRY WALLS ARE USED ACROSS DRAINAGE FLOWS PROVIDE WEEP HOLES IN THE WALL AT GROUND LEVEL (SEE DETAIL).

SURVEY NOTES:

- BASIS OF BEARING USED IS RECORD PLAT BASED ON THE FOUND MONUMENTS.
- ELEVATIONS SHOWN ARE NAVD88 BASED ON ACS MONUMENT 7_L15.
- SPOT ELEVATIONS SHOWN PLUS 5100' ARE THE NAVD88 ELEVATION.
- TOPOGRAPHIC SURVEY COMPLETED APRIL 2008.

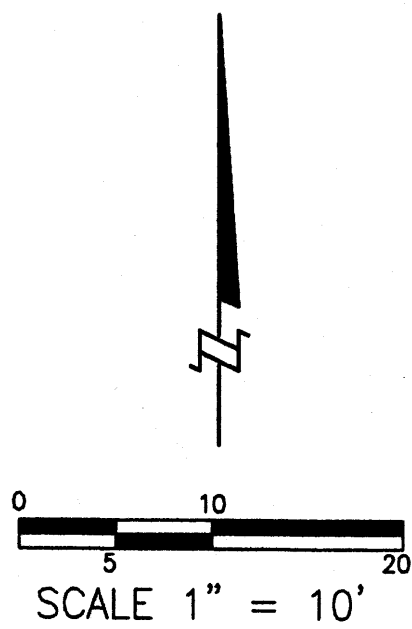
WEEP HOLE DETAIL



VICINITY MAP
ZONE ATLAS L-15

THE PROPOSED RETAINING WALL WAS RELOCATED TO THE WEST EDGE OF THE UTILITY EASEMENT ON THE ADJOINING LOT. IT WAS COMBINED WITH THE NEW RETAINING WALL ON 1918 BUENA VISTA WHICH IS CURRENTLY BEING DEVELOPED BY THE SAME OWNER.

1918 Buena Vista Under Construction



LEGEND

- = SET #5 REBAR W/CAP PS7430
- = FOUND #4 REBAR
- = FOUND #5 REBAR
- △ = FOUND BRASS CAP
- = FOUND MONUMENT AS SHOWN
- T = FOUND HIGHWAY T-RAIL
- *-*- = FENCE
- = PIPE O.D. AS SHOWN
- = FLOW DIRECTION
- ⊙ = SANITARY SEWER MANHOLE
- ⊕ = WATER VALVE
- ⊖ = WATER METER
- ⊗ = FIRE HYDRANT
- ⊠ = TRAFFIC CONTROL BOX
- ⊡ = LIGHT POLE
- ⊢ = UTILITY POLE
- ⊣ = UTILITY BOX
- ⊤ = PROPOSED ELEVATION
- ⊥ = STORM DRAIN MANHOLE
- ⊦ = CATCH BASIN
- ⊧ = TREE
- ⊨ = SPOT ELEVATION
- ⊩ = CONTOUR LINE
- ⊪ = GAS METER
- ⊫ = BUSH
- ⊬ = SIGN



LYNN ENGINEERING & SURVEYING, INC.
02 CHAPARRAL LANE
PERALTA, NEW MEXICO 87042
(505) 869-3548

[illegible]

VICINITY MAP ZONE ATLAS L-15

THE PROJECT IS LOCATED AT 1909 WILMOORE DRIVE SE, NORTH OF GIBSON AND SOUTH OF GIRARD. THE SITE CURRENTLY CONSISTS ONE VACANT LOT. ONE APARTMENT 3-PLEX UNIT IS PROPOSED FOR THE SITE. THE 3-PLEX UNIT HAS 8 PARKING SPACES. THE DRIVEWAY SHOWN IN THE PLAN ABOVE. A CROSLOT DRAINAGE EASEMENT WILL BE PROVIDED FOR THE PARKING AREA. NO FORMAL CIRCULATION OF TRAFFIC IS WARRANTED FOR THIS DEVELOPMENT. THE PROJECT WILL HAVE A MINIMAL IMPACT ON ADJACENT SITES. NO VARIANCE IS BEING REQUESTED FOR THIS SITE.

**Public Infrastructure shown
on these plans for information
only and not part of approval.
Separate DRC/Permit approval
and Work Order required.**

ALL WHEELCHAIR RAMPS LOCATED WITHIN THE PUBLIC RIGHT OF WAY MUST HAVE TRUNCATED DOMES.

OFF STREET PARKING:
14-16-3-1 24 (b)

**1 1/2 Parking Spaces per 2 Bedroom Unit,
6 required**

TLC 6.06.0

PAIZ WILMOORE
4-PLEX TRAFFIC CIRCULATION LAYOUT
1808 WILMOORE DRIVE SE
ALBUQUERQUE, NM

Joseph B. Burwinkle Jr.
ARCHITECT
3700 Coors Blvd, NW Suite E
Albuquerque, New Mexico 87120
505.345.3850

DRAWN
JB/BJP/STP
CHECKED
DATE
06.06.08
SCALE
JOB NO.
08-17
SHEET

1

L-15/D57

GRADING & DRAINAGE PLAN 1909 WILMOORE DRIVE S.E. ALBUQUERQUE, NEW MEXICO APRIL 2008

LEGAL DESCRIPTION

LOT 3, BLOCK 13 OF CLAYTON HEIGHTS AS FILED
IN THE OFFICE OF THE COUNTY CLERK, OF BERNALILLO COUNTY,
NEW MEXICO ON OCTOBER 15, 1947, IN BOOK C, PAGE 73.

DRAINAGE PLAN EXISTING

THE 6250 SQ FT LOT, IS CURRENTLY VACANT, AND UNIMPROVED.
THE LOT DOES NOT ACCEPT OFFSITE FLOWS AND DISCHARGES TO THE STREET.
FIRM MAP 350002 0361E SHOWS ZONE X FOR THE LOT.

PROPOSED

A NEW RESIDENTIAL STRUCTURE IS PROPOSED. THE PROPOSED IMPROVEMENTS
WILL DISCHARGE TO THE ADJOINING STREET. THE STORM WATER WILL TRAVEL
NORTH TO A DROP INLET APPROXIMATELY 100' NORTH OF THE PROPERTY, THEN
IN UNDERGROUND STRUCTURE THROUGH GENEVA'S ARROYO TO THE SOUTH
DIVERSION CHANNEL.

CALCULATION INFORMATION

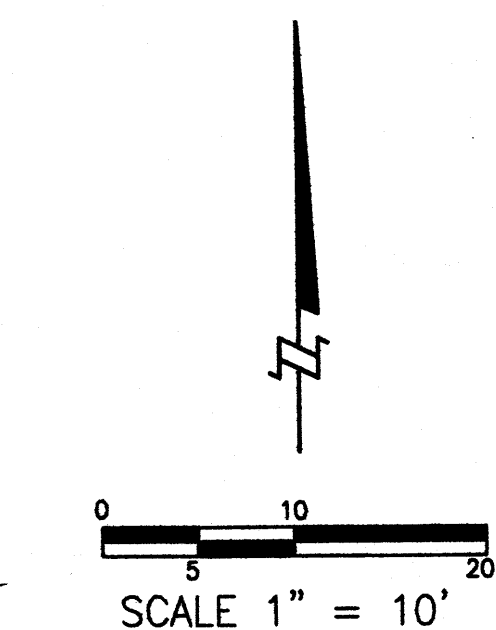
- THE DESIGN STORM USED FOR THESE CALCULATIONS IS THE
100 YEAR 6 HOUR STORM THE DATA IS OBTAINED FROM NOAA ATLAS 2,
VOLUME IV, FIGURE 24. THE DEPTH OF RAINFALL IS 2.35" FOR THE 6 HOUR
STORM.
- THE AHYMO392 PROGRAM PROVIDED BY AMAFCA WAS USED TO CALCULATE
THE DATA. THE INPUT DATA WAS DETERMINED IN ACCORDANCE WITH SECTION
22.2, HYDROLOGY OF THE CITY OF ALBUQUERQUE DEVELOPMENT PROCESS MANUAL.

TP = 0.1333 HOURS USED AS MINIMUM TC = 2 HRS
FACTORS USED ARE TREATMENT :
DEVELOPED BASIN - A 0.00% B 00% C 21.94% D 78.06%
UNDEVELOPED BASIN - A 0.00% B 00% C 100.00% D 0.00%

DRN BASIN	SIZE	IMPERVIOUS %	P100YR6HR %	VOL100 6 HOUR	DISCHARGE PEAK CFS
DEVELOPED	6250 SQ FT	78.06%	2.35"	0.023 AC FT	0.55
UNDEVELOPED	6250 SQ FT	0.00%	2.35"	0.013 AC FT	0.42

SEE SUPPLEMENTAL DATA SHEETS (ATTACHMENTS SHEETS 1 - 4)

VICINITY MAP ZONE ATLAS L-15



LEGEND		
• = SET #5 REBAR W/CAP PS7430	○ = SANITARY SEWER MANHOLE	○ = STORM DRAIN MANHOLE
○ = FOUND #4 REBAR	⊗ = WATER VALVE	⊗ = CATCH BASIN
○ = FOUND #5 REBAR	⊗ = WATER METER	⊗ = TREE
△ = FOUND BRASS CAP	⊗ = FIRE HYDRANT	⊗ = SPOT ELEVATION
□ = FOUND MONUMENT AS SHOWN	⊗ = TRAFFIC CONTROL BOX	⊗ = CONTOUR LINE
T = FOUND HIGHWAY T-RAIL	⊗ = LIGHT POLE	⊗ = GAS METER
✕ = FENCE	⊗ = UTILITY POLE	⊗ = BUSH
⊗ = PIPE O.D. AS SHOWN	⊗ = UTILITY BOX	⊗ = SIGN
⊗ = FLOW DIRECTION	⊗ = PROPOSED ELEVATION	

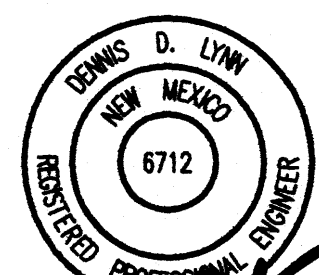
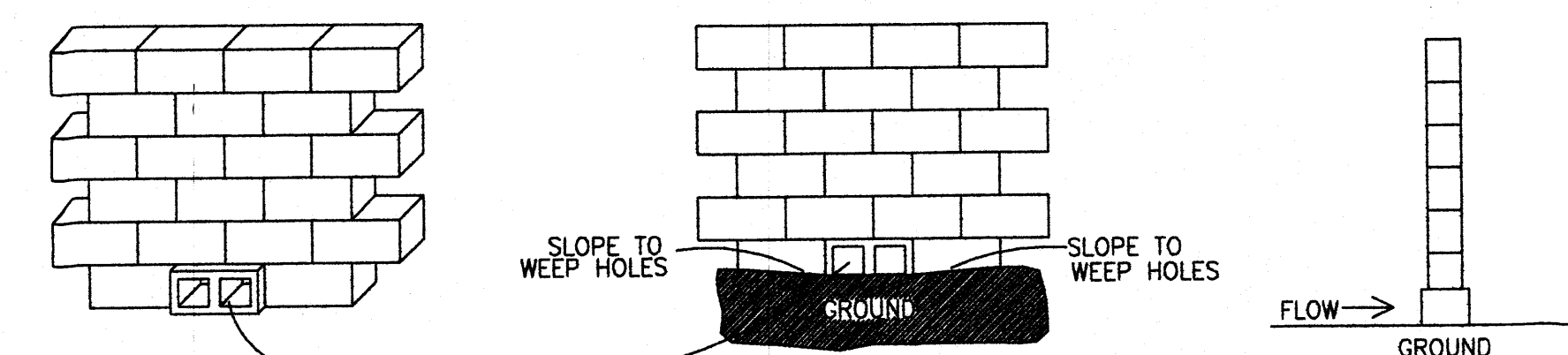
NOTES:

- NEW DRIVEWAYS TO BE BUILT USING COA STANDARD DRAWING 2425.
- IF SOLID MASONRY WALLS ARE USED ACROSS DRAINAGE FLOWS PROVIDE
WEEP HOLES IN THE WALL AT GROUND LEVEL (SEE DETAIL).

SURVEY NOTES:

- BASIS OF BEARING USED IS RECORD PLAT BASED ON THE FOUND MONUMENTS.
- ELEVATIONS SHOWN ARE NAVD88 BASED ON ACS MONUMENT 7-L15.
- SPOT ELEVATIONS SHOWN PLUS 5100' ARE THE NAVD88 ELEVATION.
- TOPOGRAPHIC SURVEY COMPLETED APRIL 2008.

WEEP HOLE DETAIL



LYNN ENGINEERING & SURVEYING, INC.
02 CHAPARRAL LANE
PERALTA, NEW MEXICO 87042
(505) 869-3548

RECEIVED
AUG 11 2008
SECTION
HYDROLOGY

GRADING & DRAINAGE PLAN
1909 WILMOORE DRIVE S.E.
ALBUQUERQUE, NEW MEXICO
APRIL 2008

LEGAL DESCRIPTION
LOT 3, BLOCK 13 OF CLAYTON HEIGHTS AS FILED
IN THE OFFICE OF THE COUNTY CLERK, OF BERNALILLO COUNTY,
NEW MEXICO ON OCTOBER 15, 1947, IN BOOK C, PAGE 73.

VICINITY MAP
ZONE ATLAS L-15

DRAINAGE PLAN
EXISTING
THE 6250 SQ FT LOT, IS CURRENTLY VACANT, AND UNIMPROVED.
THE LOT DOES NOT ACCEPT OFFSITE FLOWS AND DISCHARGES TO THE STREET.
FIRM MAP 350002 0361E SHOWS ZONE X FOR THE LOT.

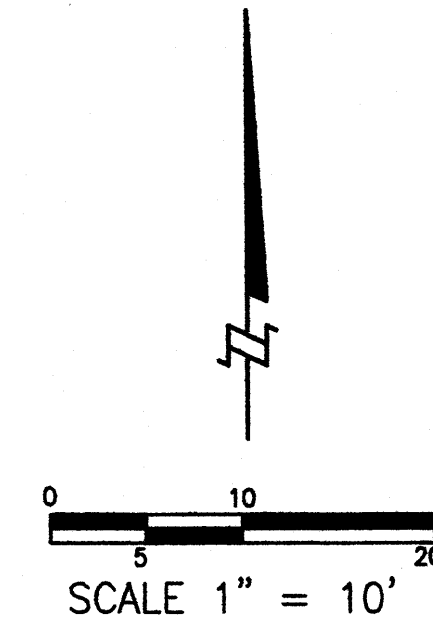
PROPOSED
A NEW RESIDENTIAL STRUCTURE IS PROPOSED. THE PROPOSED IMPROVEMENTS
WILL DISCHARGE TO THE ADJOINING STREET. THE STORM WATER WILL TRAVEL
NORTH TO A DROP INLET APPROXIMATELY 100' NORTH OF THE PROPERTY. THEN
IN UNDERGROUND STRUCTURE THROUGH GENEVA'S ARROYO TO THE SOUTH
DIVERSION CHANNEL.

CALCULATION INFORMATION
I. THE DESIGN STORM USED FOR THESE CALCULATIONS IS THE
100 YEAR 6 HOUR STORM THE DATA IS OBTAINED FROM NOAA ATLAS 2,
VOLUME IV, FIGURE 24. THE DEPTH OF RAINFALL IS 2.35" FOR THE 6 HOUR
STORM.
II. THE AHYMO392 PROGRAM PROVIDED BY AMAFCA WAS USED TO CALCULATE
THE DATA. THE INPUT DATA WAS DETERMINED IN ACCORDANCE WITH SECTION
22.2, HYDROLOGY OF THE CITY OF ALBUQUERQUE DEVELOPMENT PROCESS MANUAL.

TP = 0.1333 HOURS USED AS MINIMUM TC = 2 HRS
FACTORS USED ARE TREATMENT 1
DEVELOPED BASIN - A 0.00% B 0.00% C 21.94% D 78.06%
UNDEVELOPED BASIN - A 0.00% B 0.00% C 100.00% D 0.00%

DRN	SIZE	IMPERVIOUS	P100YR6HR	VOL100	DISCHARGE
BASIN		%		6 HOUR	PEAK CFS
DEVELOPED	6250 SQ FT	78.06%	2.35"	0.023 AC FT	0.55
UNDEVELOPED	6250 SQ FT	0.00%	2.35"	0.013 AC FT	0.42

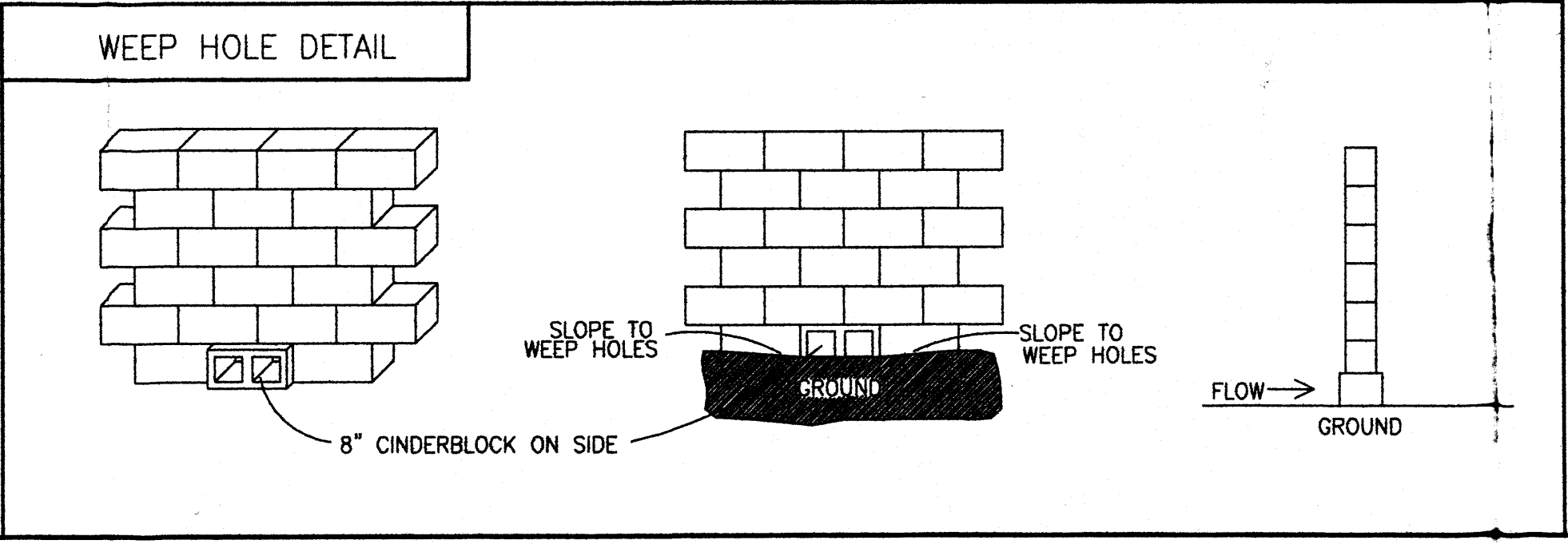
SEE SUPPLEMENTAL DATA SHEETS (ATTACHMENTS SHEETS 1 - 4)



LEGEND		
● = SET #5 REBAR W/CAP PS7430	○ = SANITARY SEWER MANHOLE	⊙ = STORM DRAIN MANHOLE
○ = FOUND #4 REBAR	⊙ = WATER VALVE	■ = CATCH BASIN
○ = FOUND #5 REBAR	⊙ = WATER METER	⊙ = TREE
△ = FOUND BRASS CAP	⊙ = FIRE HYDRANT	⊙ = SPOT ELEVATION
□ = FOUND MONUMENT AS SHOWN	⊙ = TRAFFIC CONTROL BOX	⊙ = CONTOUR LINE
T = FOUND HIGHWAY T-RAIL	⊙ = LIGHT POLE	⊙ = GAS METER
✕ = FENCE	⊙ = UTILITY POLE	⊙ = BUSH
○ = PIPE O.D. AS SHOWN	⊙ = UTILITY BOX	⊙ = SIGN
→ = FLOW DIRECTION	⊙ = PROPOSED ELEVATION	

NOTES:
A. NEW DRIVEWAYS TO BE BUILT USING COA STANDARD DRAWING 2425.
B. IF SOLID MASONRY WALLS ARE USED ACROSS DRAINAGE FLOWS PROVIDE
WEEP HOLES IN THE WALL AT GROUND LEVEL (SEE DETAIL).

SURVEY NOTES:
1. BASIS OF BEARING USED IS RECORD PLAT BASED ON THE FOUND MONUMENTS.
2. ELEVATIONS SHOWN ARE NAVD88 BASED ON ACS MONUMENT 7_L15.
3. SPOT ELEVATIONS SHOWN PLUS 5100' ARE THE NAVD88 ELEVATION.
4. TOPOGRAPHIC SURVEY COMPLETED APRIL 2008.



TL DL
08/08/08
AC\08010G3
EP\08010A

LYNN ENGINEERING & SURVEYING, INC.
02 CHAPARRAL LANE
PERALTA, NEW MEXICO 87042
(505) 869-3548