

# CITY OF ALBUQUERQUE

*Planning Department*  
Alan Varela, Director



*Mayor Timothy M. Keller*

May 1, 2025

Jesus Lopez, P.E.  
Smith Engineering  
2201 San Pedro Dr. NE, Bldg 4, Suite 200  
Albuquerque, NM 87110

**RE: Loma Linda Community Center Gym Addition**  
**1700 Yale Blvd SE**  
**Permanent C.O. - Accepted**  
**Engineer's Certification Date: 04/23/2025**  
**Engineer's Stamp Date: 02/07/2023**  
**Hydrology File: L16D025**  
**Case # HYDR-2025-00149**

PO Box 1293

Dear Mr. Lopez:

Albuquerque

Based on the Certification received 04/28/2025 and site visit on 04/30/2025, this letter serves as a "green tag" from Hydrology Section for a Permanent Certificate of Occupancy to be issued by the Building and Safety Division.

NM 87103

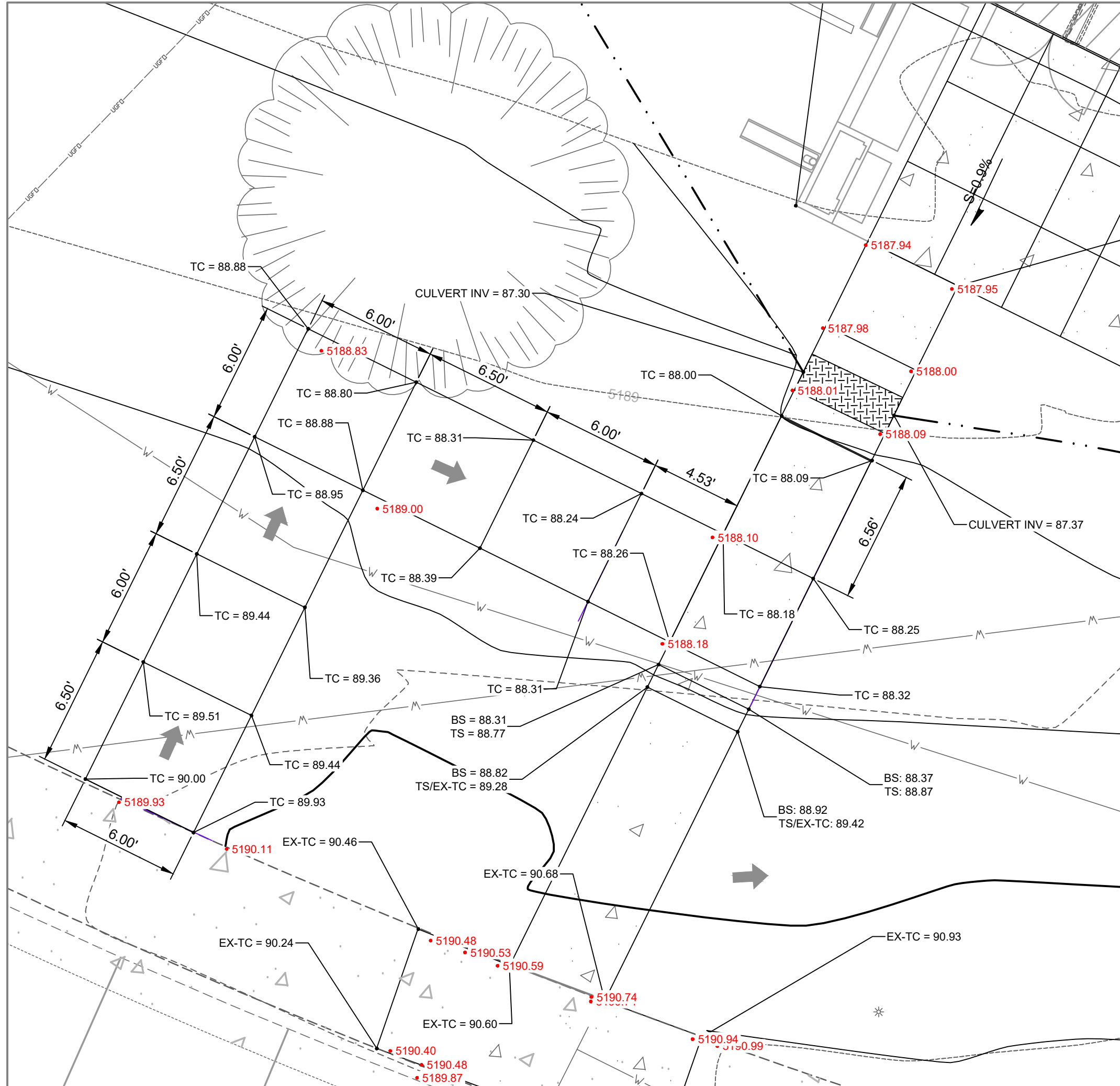
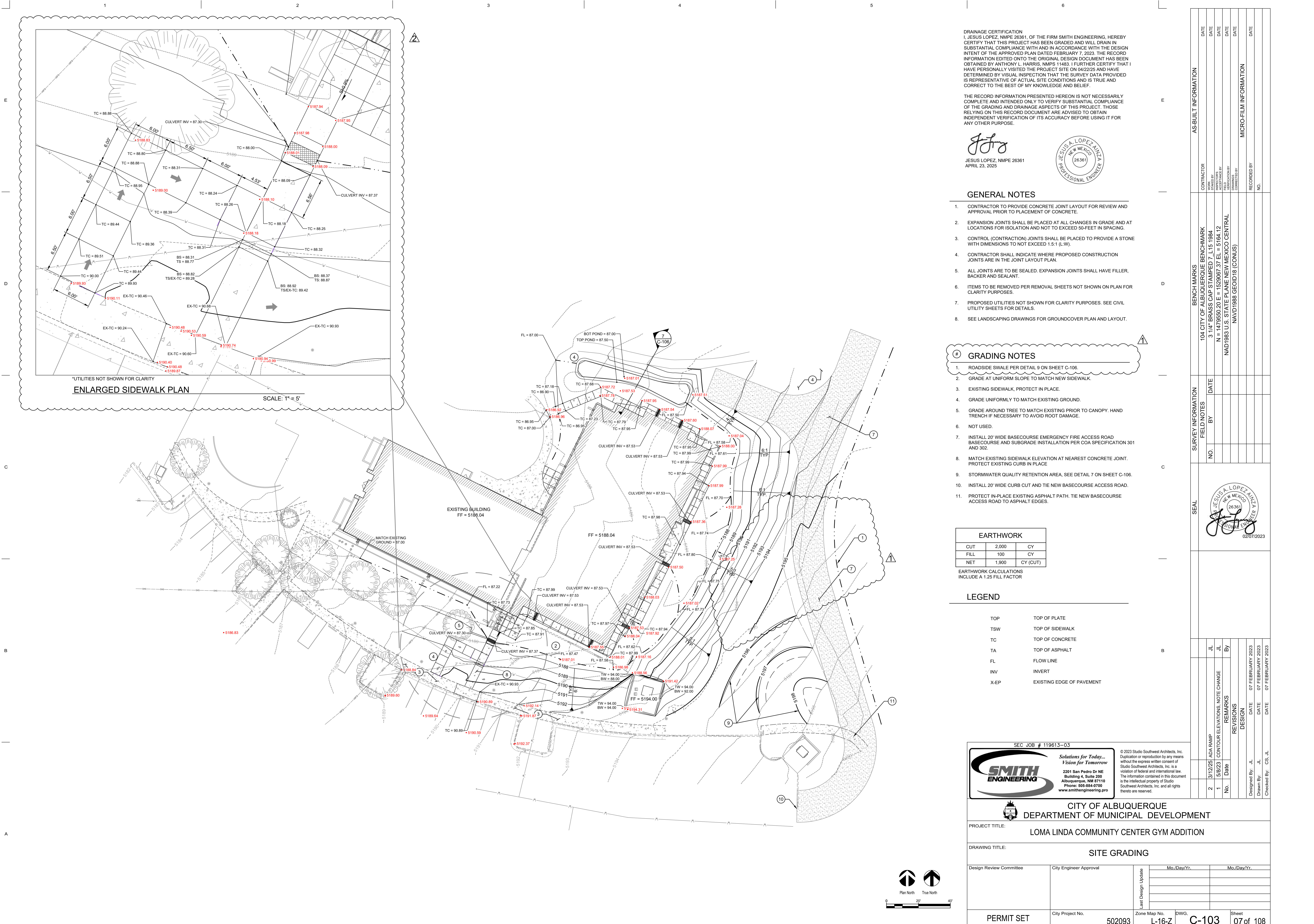
If you have any questions, please contact me at 505-924-3314 or [amontoya@cabq.gov](mailto:amontoya@cabq.gov).

[www.cabq.gov](http://www.cabq.gov)

Sincerely,

Anthony Montoya, Jr., P.E., CFM  
Senior Engineer, Hydrology  
Planning Department, Development Review Services





ENLARGED SIDEWALK PLAN  
SCALE: 1" = 5'

DRAINAGE CERTIFICATION  
I, JESUS LOPEZ, NMPE 26361, OF THE FIRM SMITH ENGINEERING, HEREBY CERTIFY THAT THIS PROJECT HAS BEEN GRADED AND WILL DRAIN IN SUBSTANTIAL COMPLIANCE WITH AND IN ACCORDANCE WITH THE DESIGN INTENT OF THE APPROVED PLAN DATED FEBRUARY 7, 2023. THE RECORD INFORMATION EDITED ONTO THE ORIGINAL DESIGN DOCUMENT HAS BEEN OBTAINED BY ANTHONY L. HARRIS, NMPS 11483. I FURTHER CERTIFY THAT I HAVE PERSONALLY VISITED THE PROJECT SITE ON 04/22/2023 AND HAVE DETERMINED BY VISUAL INSPECTION THAT THE SURVEY DATA PROVIDED IS REPRESENTATIVE OF ACTUAL SITE CONDITIONS AND IS TRUE AND CORRECT TO THE BEST OF MY KNOWLEDGE AND BELIEF.

THE RECORD INFORMATION PRESENTED HEREON IS NOT NECESSARILY COMPLETE AND INTENDED ONLY TO VERIFY SUBSTANTIAL COMPLIANCE OF THE GRADING AND DRAINAGE ASPECTS OF THIS PROJECT. THOSE RELYING ON THIS RECORD DOCUMENT ARE ADVISED TO OBTAIN INDEPENDENT VERIFICATION OF ITS ACCURACY BEFORE USING IT FOR ANY OTHER PURPOSE.

JESUS LOPEZ, NMPE 26361  
APRIL 23, 2023



GENERAL NOTES

- 1. CONTRACTOR TO PROVIDE CONCRETE JOINT LAYOUT FOR REVIEW AND APPROVAL PRIOR TO PLACEMENT OF CONCRETE.
- 2. EXPANSION JOINTS SHALL BE PLACED AT ALL CHANGES IN GRADE AND AT LOCATIONS FOR ISOLATION AND NOT TO EXCEED 50-FEET IN SPACING.
- 3. CONTROL (CONTRACTION) JOINTS SHALL BE PLACED TO PROVIDE A STONE WITH DIMENSIONS TO NOT EXCEED 1.5:1 (L:W).
- 4. CONTRACTOR SHALL INDICATE WHERE PROPOSED CONSTRUCTION JOINTS ARE IN THE JOINT LAYOUT PLAN.
- 5. ALL JOINTS ARE TO BE SEALED. EXPANSION JOINTS SHALL HAVE FILLER, BACKER AND SEALANT.
- 6. ITEMS TO BE REMOVED PER REMOVAL SHEETS NOT SHOWN ON PLAN FOR CLARITY PURPOSES.
- 7. PROPOSED UTILITIES NOT SHOWN FOR CLARITY PURPOSES. SEE CIVIL UTILITY SHEETS FOR DETAILS.
- 8. SEE LANDSCAPING DRAWINGS FOR GROUND COVER PLAN AND LAYOUT.

GRADING NOTES

- 1. ROADSIDE SWALE PER DETAIL 9 ON SHEET C-106.
- 2. GRADE AT UNIFORM SLOPE TO MATCH NEW SIDEWALK.
- 3. EXISTING SIDEWALK, PROTECT IN PLACE.
- 4. GRADE UNIFORMLY TO MATCH EXISTING GROUND.
- 5. GRADE AROUND TREE TO MATCH EXISTING PRIOR TO CANOPY. HAND TRENCH IF NECESSARY TO AVOID ROOT DAMAGE.
- 6. NOT USED.
- 7. INSTALL 20' WIDE BASECOURSE EMERGENCY FIRE ACCESS ROAD BASECOURSE AND SUBGRADE INSTALLATION PER COA SPECIFICATION 301 AND 302.
- 8. MATCH EXISTING SIDEWALK ELEVATION AT NEAREST CONCRETE JOINT. PROTECT EXISTING CURB IN PLACE.
- 9. STORMWATER QUALITY RETENTION AREA. SEE DETAIL 7 ON SHEET C-106.
- 10. INSTALL 20' WIDE CURB CUT AND TIE NEW BASECOURSE ACCESS ROAD.
- 11. PROTECT IN-PLACE EXISTING ASPHALT PATH. TIE NEW BASECOURSE ACCESS ROAD TO ASPHALT EDGES.

EARTHWORK		
CUT	2,000	CY
FILL	100	CY
NET	1,900	CY (CUT)

EARTHWORK CALCULATIONS  
INCLUDE A 1.25 FILL FACTOR

LEGEND

- TOP TOP OF PLATE
- TSW TOP OF SIDEWALK
- TC TOP OF CONCRETE
- TA TOP OF ASPHALT
- FL FLOW LINE
- INV INVERT
- X-EP EXISTING EDGE OF PAVEMENT

SEC JOB # 119613-03

Solutions for Today...  
Vision for Tomorrow

© 2023 Studio Southwest Architects, Inc.  
Duplication or reproduction by any means without the express written consent of Studio Southwest Architects, Inc. is a violation of federal and international law. The information contained in this document is the intellectual property of Studio Southwest Architects, Inc. and all rights thereto are reserved.

CITY OF ALBUQUERQUE  
DEPARTMENT OF MUNICIPAL DEVELOPMENT

PROJECT TITLE:  
LOMA LINDA COMMUNITY CENTER GYM ADDITION

DRAWING TITLE:  
SITE GRADING

Design Review Committee

City Engineer Approval

Last Design Update

Mo./Day/Yr.

PERMIT SET

City Project No.  
502093

Zone Map No.  
L-16-Z

DWG.  
C-103

Sheet  
07 of 108

23/12/25 ADA RAMP

15/08/23 CONTOUR ELEVATIONS NOTE CHANGE

No. Date

REVISIONS

DESIGN

Drawn By: J.L.

Checked By: CS, J.L.

07 FEBRUARY 2023

07 FEBRUARY 2023

REMARKS

By

J.L.

J.L.