

# CITY OF ALBUQUERQUE

Planning Department  
Alan Varela, Director



Mayor Timothy M. Keller

May 24, 2024

David Aube, PE  
Design Group  
120 Vassar Dr. SE  
Albuquerque, NM 87106

**Re: Albuquerque Community Safety Department/ 1138 San Mateo Blvd. SE**  
**Request for Certificate of Occupancy**  
**Transportation Development Final Inspection**  
Engineer's Stamp dated 10-21-22 (L18-D045A)  
Certification dated 05-21-24

Dear Mr. Shelton,

Based upon the information provided in your submittal received 05-21-24, Transportation Development has no objection to the issuance of a Permanent Certificate of Occupancy. This letter serves as a "green tag" from Transportation Development for a Permanent Certificate of Occupancy to be issued by the Building and Safety Division.

PO Box 1293

If you have any questions, please contact Ernest Armijo at (505) 924-3991 or at [earmijo@cabq.gov](mailto:earmijo@cabq.gov)

Albuquerque

Sincerely,

NM 87103

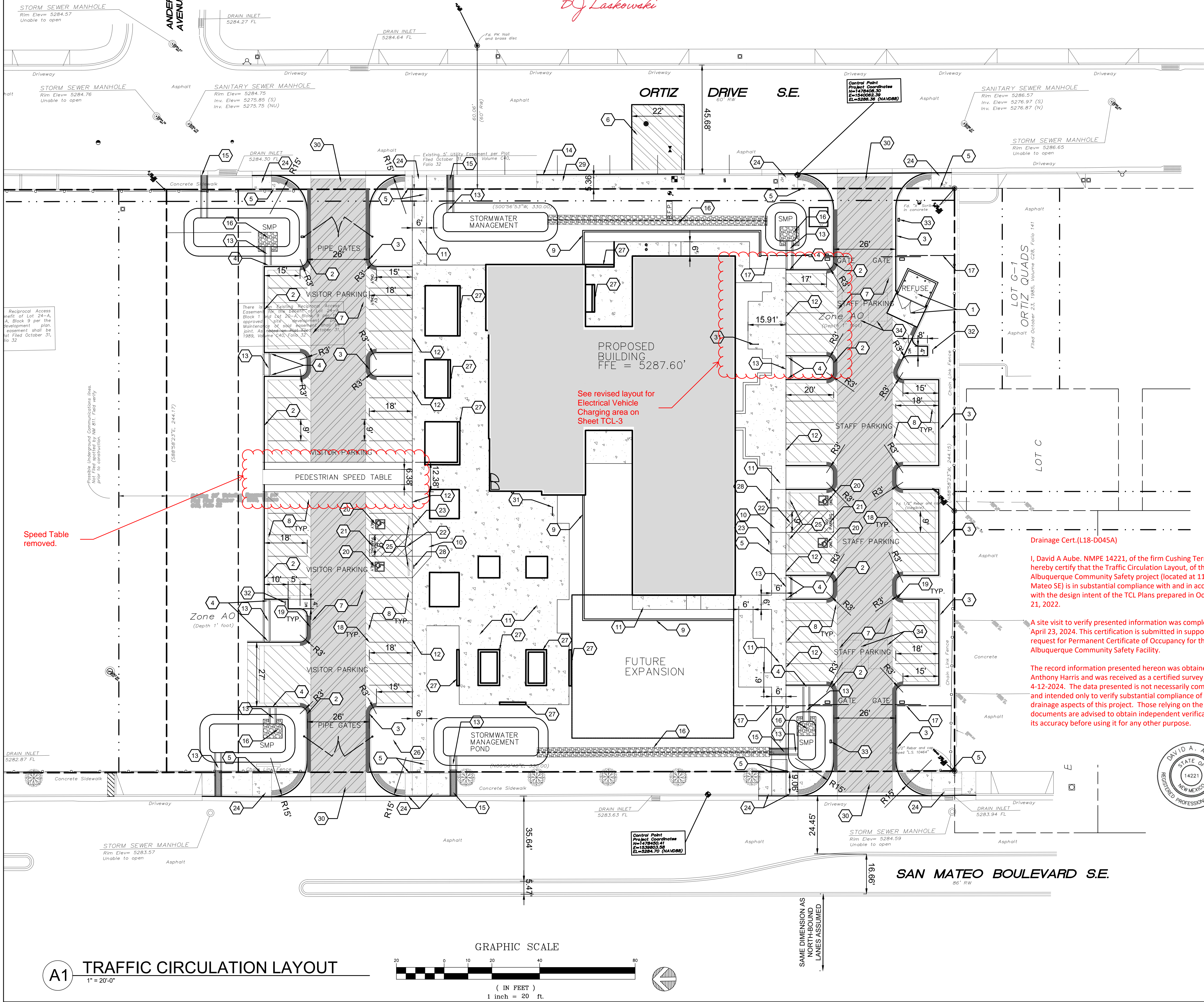
Ernest Armijo, P.E.  
Principal Engineer, Planning Dept.  
Development Review Services

[www.cabq.gov](http://www.cabq.gov)

\xxx via: email  
C: CO Clerk, File

APPROVED FOR ACCESS  
ONLY SOLID WASTE DEPT  
1-SINGLE TRASH ENCLOSURE-10-26-2022  
SITE MUST PROVIDE A GATE CODE FOR  
ACCESS BETWEEN THE HOURS OF 5AM -  
7PM. MUST HAVE A PRESURE PAD FOR EXIT.

DJ Laskowski



## PAVING PLAN GENERAL NOTES

- SEE SHEET CG001 FOR COMPLETE LIST OF GENERAL NOTES AND SYMBOL/LINETYPE LEGEND THAT APPLY TO ALL SHEETS.
- ALL BROKEN OR CRACKED SIDEWALK AND OR CURB & GUTTER MUST BE REPLACED WITH SIDEWALK (PER 2430) AND OR CURB & GUTTER (PER 2415A).
- NO LOT LINE ADJUSTMENTS PROPOSED.

## PAVING PLAN KEYED NOTES

- CONCRETE PAVEMENT PER DETAIL B3/C-501.
- 6" STANDARD CURB AND GUTTER PER DETAIL A5/C-501.
- 6" DEPRESSED CURB AND GUTTER PER DETAIL A5/C-501.
- RUNDOWN GUTTER PER DETAIL A5/C-501.
- 6" HEADER CURB PER DETAIL A5/C-501.
- NEW ASPHALT PER COA STD DWG 2465.
- MAIN DRIVE ASPHALT PAVEMENT PER DETAIL D1/C-501.
- PARKING LOT ASPHALT PAVEMENT PER DETAIL D1/C-501.
- CMU RETAINING SCREEN WALL 8'-0" TALL MAX SEE STRUCT.
- CONCRETE CURB ACCESS RAMP PER DETAIL A1/C-502.
- CONCRETE SIDEWALK PER DETAIL B4/C-501.
- TURNDOWN EDGE ON SIDEWALK PER DETAIL A3/C-501.
- 24" CONCRETE RUNDOWN CHANNEL PER DETAIL C3/C-501.
- STANDARD CURB AND GUTTER PER COA STD DWG 2415A. MATCH EXISTING CURB HEIGHT.
- CONCRETE SIDEWALK CULVERT PER COA STD DWG 2236.
- RIP RAP EROSION PROTECTION PER DETAIL D3/C-501.
- 6" TALL DECORATIVE WROUGHT IRON FENCE PER DETAIL C5/C-504. PROVIDE CONCRETE HEADER CURB PER DETAIL A5/C-501 BELOW FENCE TO ALLOW BOTTOM OF FENCE TO BE A UNIFORM ELEVATION. SEE GRADING PLANS FOR CURB ELEVATION.
- 4" WIDE WHITE TRAFFIC PARKING.
- PAINT CURB RED WITH 6" TALL WHITE LETTERS READING "NO PARKING FIRE LANE".
- RESERVED PARKING SYMBOL PER DETAIL A4/C504.
- 12" TALL WHITE LETTERS "NO PARKING".
- ADA UNLOADING ZONE PER DETAIL A3/C-502.
- VAN ACCESSIBLE RESERVED PARKING SIGN PER DETAIL A3/TCL-2.
- ADA COMPLIANT CURB ACCESS RAMP PER CITY OF ALBUQUERQUE STD DWG 2442 AND 2443.
- PARKING BLOCK PER DETAIL C2/C-501.
- MONUMENT SIGN BASE PER DETAIL E2/C-501, SEE ARCHITECTURAL FOR SIGN FACE DETAILS.
- 12" WIDE CONCRETE BANCO WALL.
- RESERVED PARKING SIGN PER DETAIL A3/TCL-2.
- NEW CONCRETE SIDEWALK PER COA STD DWG 2430.
- PROPOSED DRIVEWAY ACCESS PER COA STD DWG 2426.
- BICYCLE RACK PER DETAIL C5/TCL-2.
- MOTORCYCLE PARKING SIGN AND PROVIDE 12" TALL WHITE LETTERS "MC" AT BACK OF PARKING STALL.
- KEY PAD ON PEDESTAL FOR GATE OPERATOR.
- LOOP DETECTOR TO OPEN GATES FOR EXITING THE SITE.


## PAVING PLAN LEGEND

- MAIN DRIVE ASPHALT PER DETAIL D1/C501
- PARKING LOT ASPHALT PER DETAIL D1/C501
- "FIRE LANE" "NO PARKING" 6" WHITE LETTERS OVER RED BACKGROUND

**Cushing Terrell**  
cushingterrell.com  
800.757.9522

THE HARTMAN + MAJEWSKI  
**DESIGN GROUP**  
Architects • Engineers • Interior Design  
Planners • Urban Designers • LEED®

120 Vassar Dr SE Suite 100  
Albuquerque New Mexico 87106  
T 505 242 6880 • F 505 242 6881

<div></div> <div>CITY OF ALBUQUERQUE CAPITAL IMPLEMENTATION PROGRAM</div>			
PROJECT TITLE: ALBUQUERQUE COMMUNITY SAFETY DEPARTMENT FACILITY			
DRAWING TITLE: TRAFFIC CIRCULATION LAYOUT			
Design Review Committee	City Engineer Approval	Last Design Update	Mo./Day/Yr.
PERMIT DRAWINGS	City Project No. 7881.00	DG Project No. 6600.AS32	Zone Map No. L-17-Z

AS-BUILT INFORMATION		BENCH MARK		SURVEY INFORMATION	
CONTRACTOR	WORK	A.C.S. MONUMENT "14-L17"	DATE	NO.	BY
STATED BY	DATE	NEW MEXICO STATE PLANE COORDINATES	DATE		
ACCEPTANCE BY	DATE	CENTRAL ZONE (NAD 83)	DATE		
FIELD ADJUSTMENT BY	DATE	N=1,480,200.281 US SURVEY FEET	DATE		
DRAWING BY	DATE	E=1,534,391.165 US SURVEY FEET	DATE		
CORRECTED BY	DATE	DELTA ALPHA = -00°12'12.90"	DATE		
MICRO-FILM INFORMATION		GROUND TO GRID FACTOR: 0.99962355	DATE		
		ELEV=5319.339 (NAVD 88)	DATE		

DAVID A. AUBE  
REGISTERED PROFESSIONAL ENGINEER  
STATE OF NEW MEXICO  
14221

Dave Aube

Drainage Cert.(L18-D045A)

I, David A. Aube, NMPE 14221, of the firm Cushing Terrell, hereby certify that the Traffic Circulation Layout, of the Albuquerque Community Safety project (located at 1138 San Mateo SE) is in substantial compliance with and in accordance with the design intent of the TCL Plans prepared in October 21, 2022.

A site visit to verify presented information was completed on April 23, 2024. This certification is submitted in support of a request for Permanent Certificate of Occupancy for the Albuquerque Community Safety Facility.

The record information presented hereon was obtained from Anthony Harris and was received as a certified survey on 4-12-2024. The data presented is not necessarily complete and intended only to verify substantial compliance of the drainage aspects of this project. Those relying on the record documents are advised to obtain independent verification of its accuracy before using it for any other purpose.

