

CONSTRUCTION DRAWINGS
MURPHY EXPRESS
TRACT A, LANDS OF TOSTA NEW MEXICO
ALBUQUERQUE, BERNALILLO COUNTY, NEW MEXICO
UTILITY DETAILS

POLYCAST®
DG0675HD

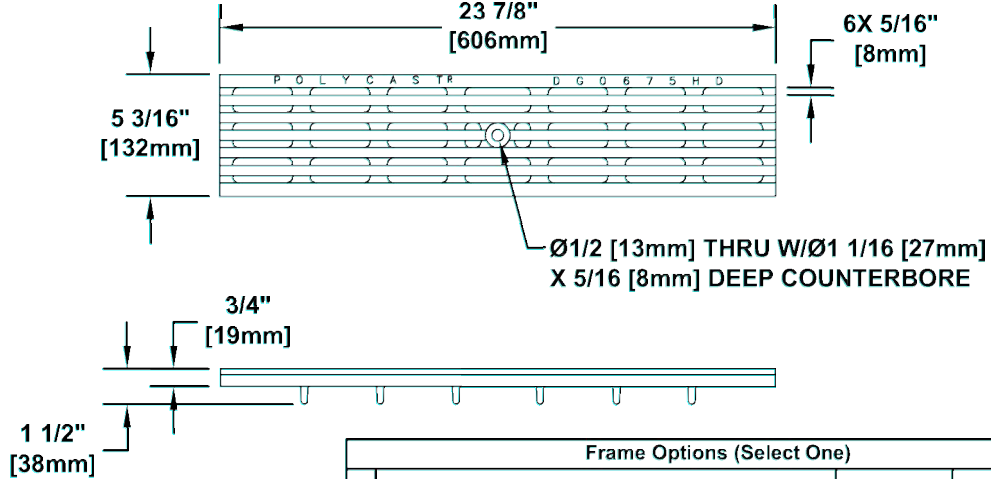
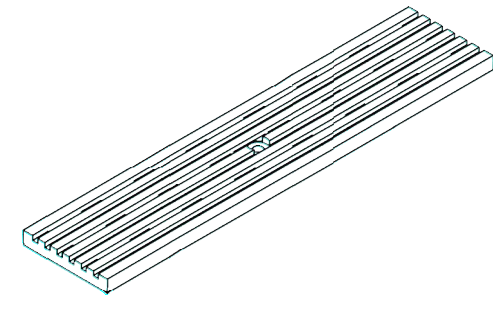
600 Series
Ductile Iron Longitudinally Slotted

PROJECT ID/
CONTRACT NO: _____

LOCATION: _____

ENGINEERING SPECIFICATION:

POLYCAST® DG0675HD is appropriate for many general use conditions. Grating locking device Part No. DA0642B (not shown) should be used and maintained secure. The grate has 26% (32in²) of open area. The grate is made of ASTM A536 GR. 65-45-12 (ductile iron) and weighs approximately 15lbs [6.80kg]. The grate is only available in a 24" [610mm] length. The grate meets Load Class D when used alone in a 600 Series channel. If grate is used in conjunction with a DG0970 frame it meets Load Class E, a DG0700AA frame then meets Load Class E and a DG0700PE Frame it meets Load Class E.



Frame Options (Select One)			
Frame Type	Part No.	DIN Load Class	
<input checked="" type="checkbox"/> DURAGUARD® Composite Frame	DG0700PE	Class E	
<input type="checkbox"/> HARCOSIDE Iron Frame	DG0700AA	Class E	
<input type="checkbox"/> Iron Frame (with anchoring rods)	DG0970	Class E	
Options (Select All That Apply)			
Options (Select All That Apply)	Part No.	Additional Specifications	
<input type="checkbox"/> Locking Device For Cast & Ductile Iron Frames & Grates	DA0642B		
<input type="checkbox"/> Stainless Steel Locking Device	DA0642BHS		
<input type="checkbox"/> Locking Device For Ductile Iron Frames & Grates	DA0942		
<input type="checkbox"/> Stainless Steel Locking Device	DA0942S		



DIN APPLICATION LOAD CLASS D:

Trafficked sections of roads and highways
Designed for a distributed pressure of 89,920 lbs (400 kN).

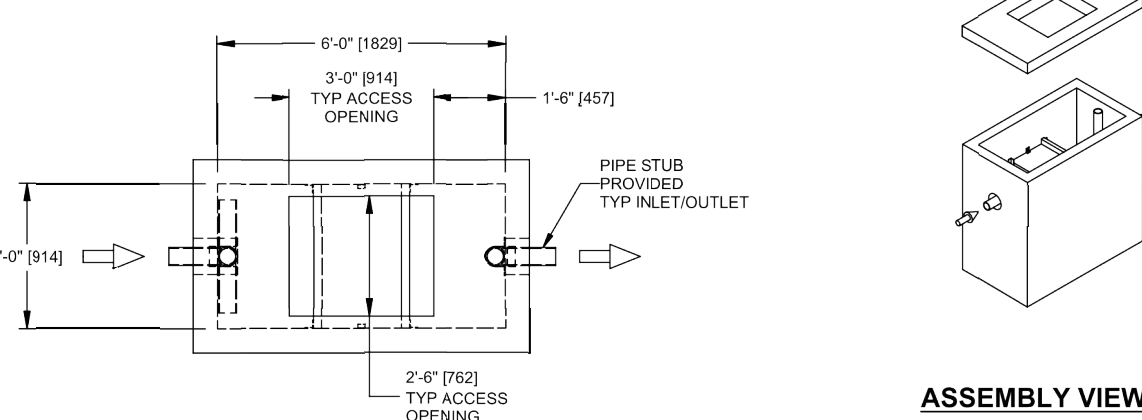
- Meets the following Standards & Specifications:
- DIN 19580 / DIN EN 1433 Drainage Channels for Vehicular and Pedestrian Areas
 - The Americans with Disabilities Act of 1990, 4.5.4
 - Australian Standard AS 3996-2006 Clause 3.3.6



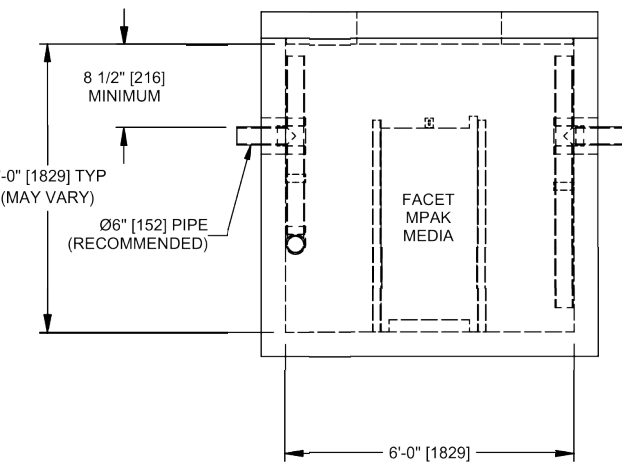
www.polycastusa.com
Toll Free Number
1-800-346-3962

PC-51
9/6/11

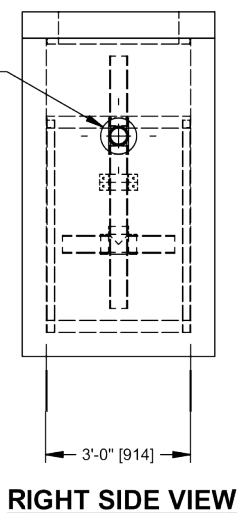
THE VORTCLAREX SYSTEM SHALL BE STENCILED
WITH THE CONTECH STORMWATER SOLUTIONS
NAME AND LOGO. PIPE OPENINGS SHALL BE
STENCILED "INLET" OR "OUTLET" AS APPROPRIATE.



PLAN VIEW



ELEVATION VIEW



RIGHT SIDE VIEW

GENERAL NOTES:

1. FLOW LINE IN AND OUT OF THE VORTCLAREX IS RECOMMENDED TO BE AT THE SAME ELEVATION.
2. MANUFACTURER SHALL BE RESPONSIBLE FOR INSTALLATION OF INTERNAL COMPONENTS.
3. VAULT IS DESIGNED TO MEET HS20 MINIMUM LOAD REQUIREMENTS.
4. RECTANGULAR HATCH SUPPLIED WITH SYSTEM, NOT INSTALLED.
5. HATCH RISERS, GRADE RINGS OR BLOCK REQUIRED BETWEEN THE TOP OF THE VORTCLAREX SYSTEM AND BASE OF THE HATCH SHALL BE IN ACCORDANCE WITH ALL APPLICABLE LOCAL STANDARDS. NOT SUPPLIED BY CONTECH STORMWATER SOLUTIONS.
6. PURCHASER TO PREPARE EXCAVATION, PROVIDE LIFTING EQUIPMENT AND SET STRUCTURE.
7. CONTRACTOR TO CONNECT THE PROVIDED PIPE STUB TO THE EXTERNAL PIPE BY MEANS OF A COUPLER, NOT SUPPLIED BY CONTECH STORMWATER SOLUTIONS.
8. VORTCLAREX BY CONTECH STORMWATER SOLUTIONS: PORTLAND, OR (800) 346-3962; SCARBOROUGH, ME (877) 907-8876; LINTHICUM, MD (866) 740-3318
9. SOME HIDDEN LINES MAY BE OMITTED FOR CLARITY.
10. INLET/OUTLET PIPE DIAMETER AND LOCATION MAY VARY.
11. THE VORTCLAREX SHALL REMOVE ESSENTIALLY ALL FREE AND DISPERSED NON-EMULSIFIED OIL FROM THE WATER STREAM AND PRODUCE A DESIRED EFFLUENT BASED ON AN OIL DROPLET TYPICAL OF THE SITE.
12. THE VORTCLAREX SHALL BE DESIGNED BASED ON A MAXIMUM AVERAGE FLOW.

THE VORTCLAREX SHALL BE DESIGNED
IN ACCORDANCE WITH STOKES LAW
AND API BULLETIN NO. 421

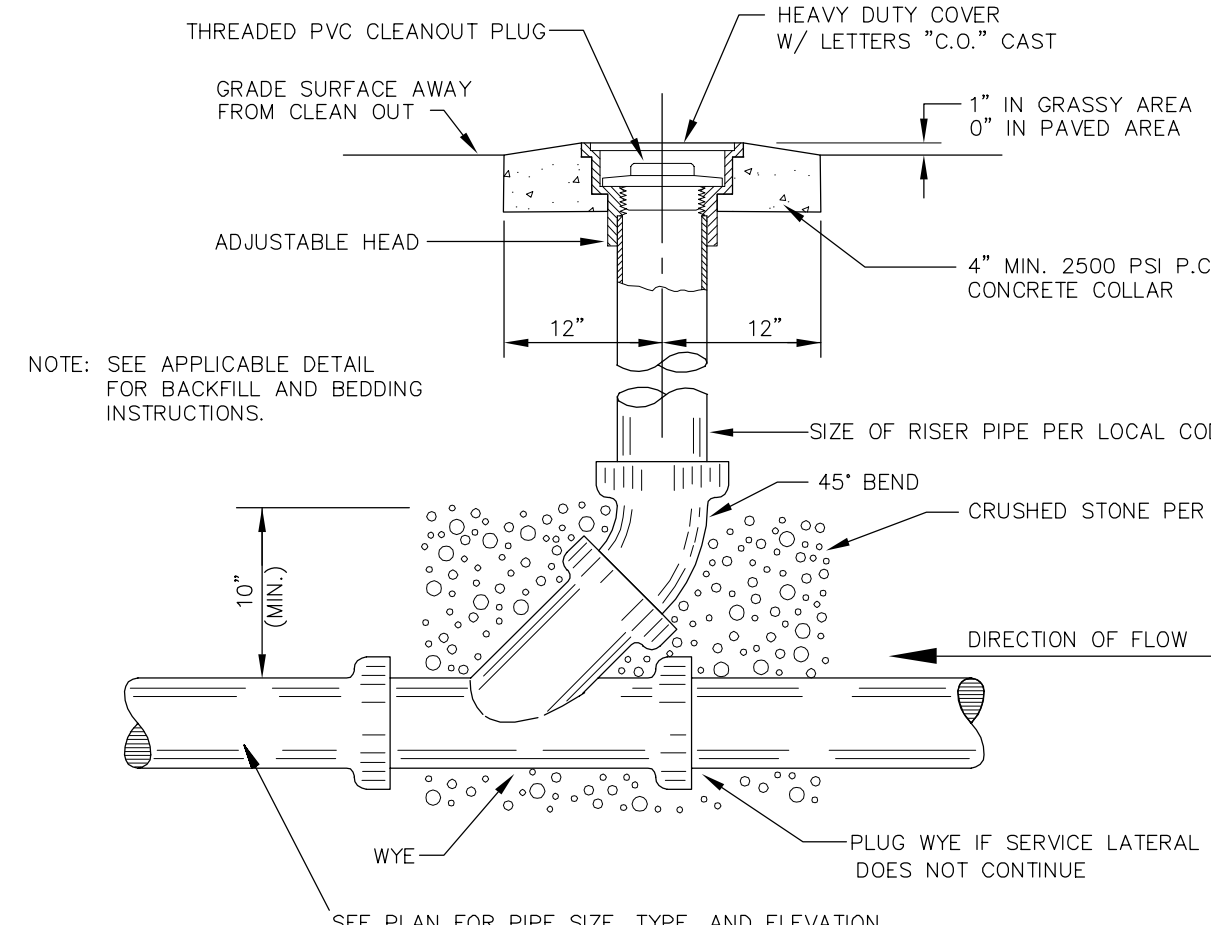
STANDARD DETAIL
OIL/WATER SEPARATION SYSTEM
VORTCLAREX® VCL30



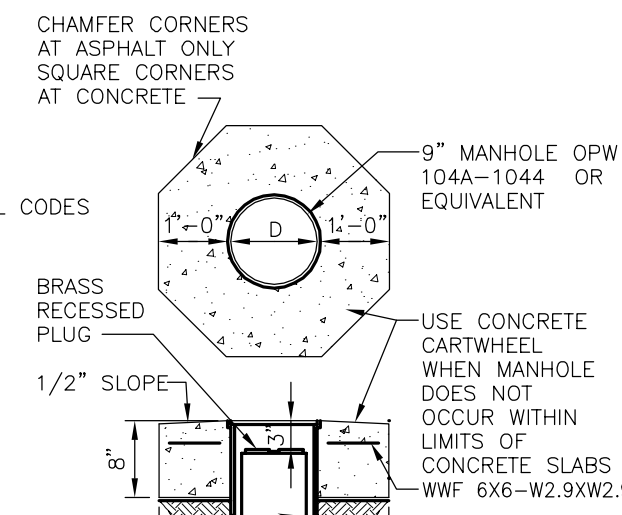
SCALE: NONE
DRAWN: JBS
CHECKED: NDG/WSG
FILE NAME: STDVCL30
DATE: 12/7/06

FOR INFORMATIONAL PURPOSES ONLY - NOT INTENDED FOR CONSTRUCTION

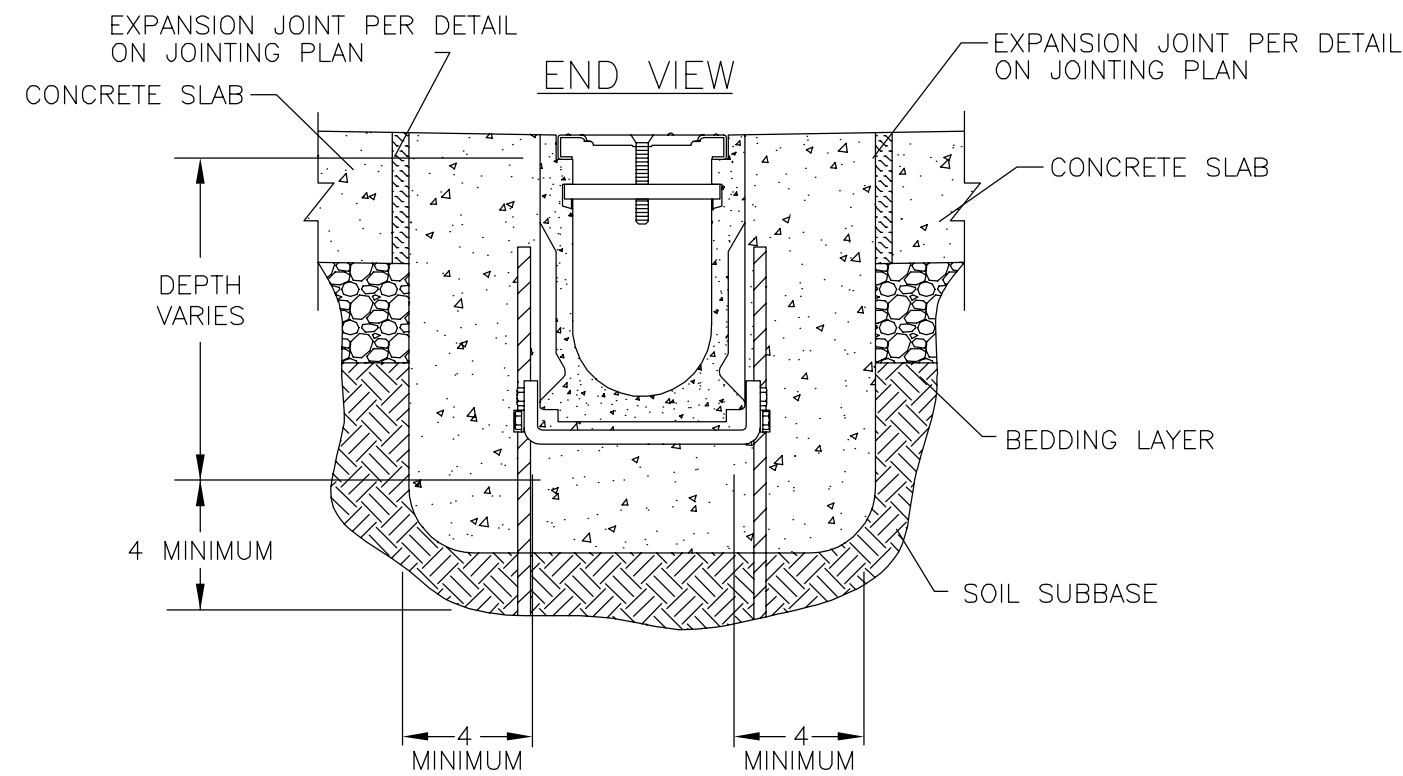
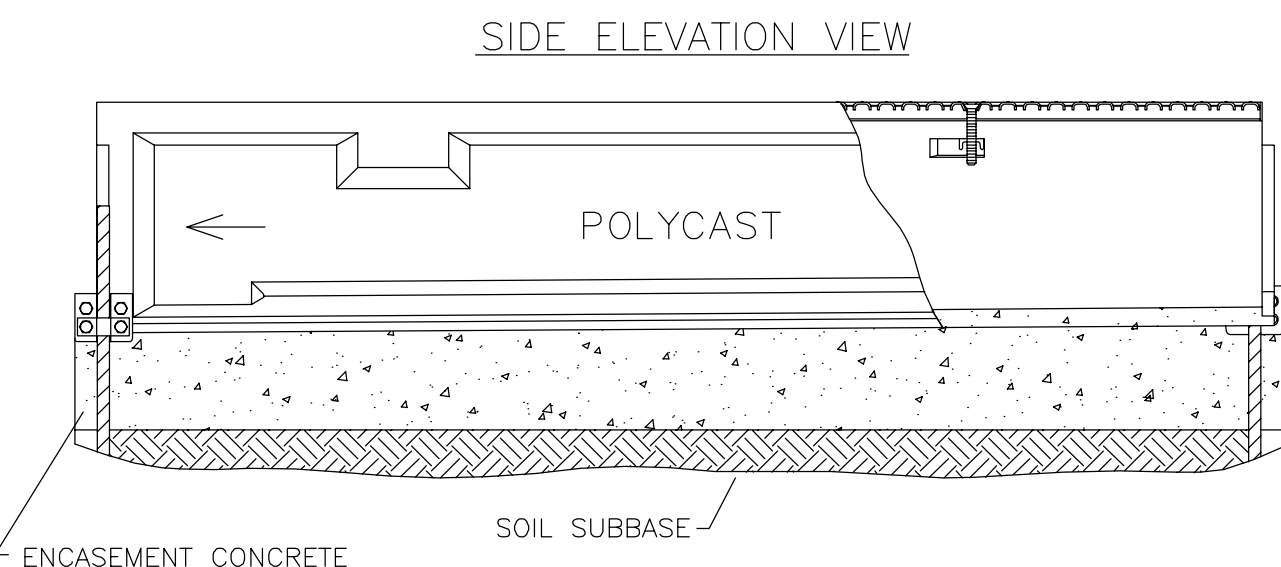
This CAD file is for the purpose of specifying stormwater treatment equipment to be furnished by CONTECH Stormwater Solutions and may only be transferred to other documents exactly as provided by CONTECH Stormwater Solutions. This block information, including the CONTECH Stormwater Solutions logo and the VortClarex designation, may be deleted if necessary. Revisions to any part of this CAD file without prior coordination with CONTECH Stormwater Solutions shall be considered unauthorized use of proprietary information.



SANITARY SEWER CLEAN-OUT
N.T.S.



TYPICAL CLEANOUT MANHOLE
SCALE: 3/4" = 1'-0"



- CONCRETE STRENGTH, THICKNESS AND REINFORCEMENT BE DETERMINED BY THE STRUCTURAL ENGINEER.
- REFER TO POLYCAST® INSTALLATION GUIDE FOR COMPLETE DETAILS.
- EXPANSION JOINTS SHOULD BE USED TO PROTECT THE CHANNEL AND CONCRETE ENCASEMENT.



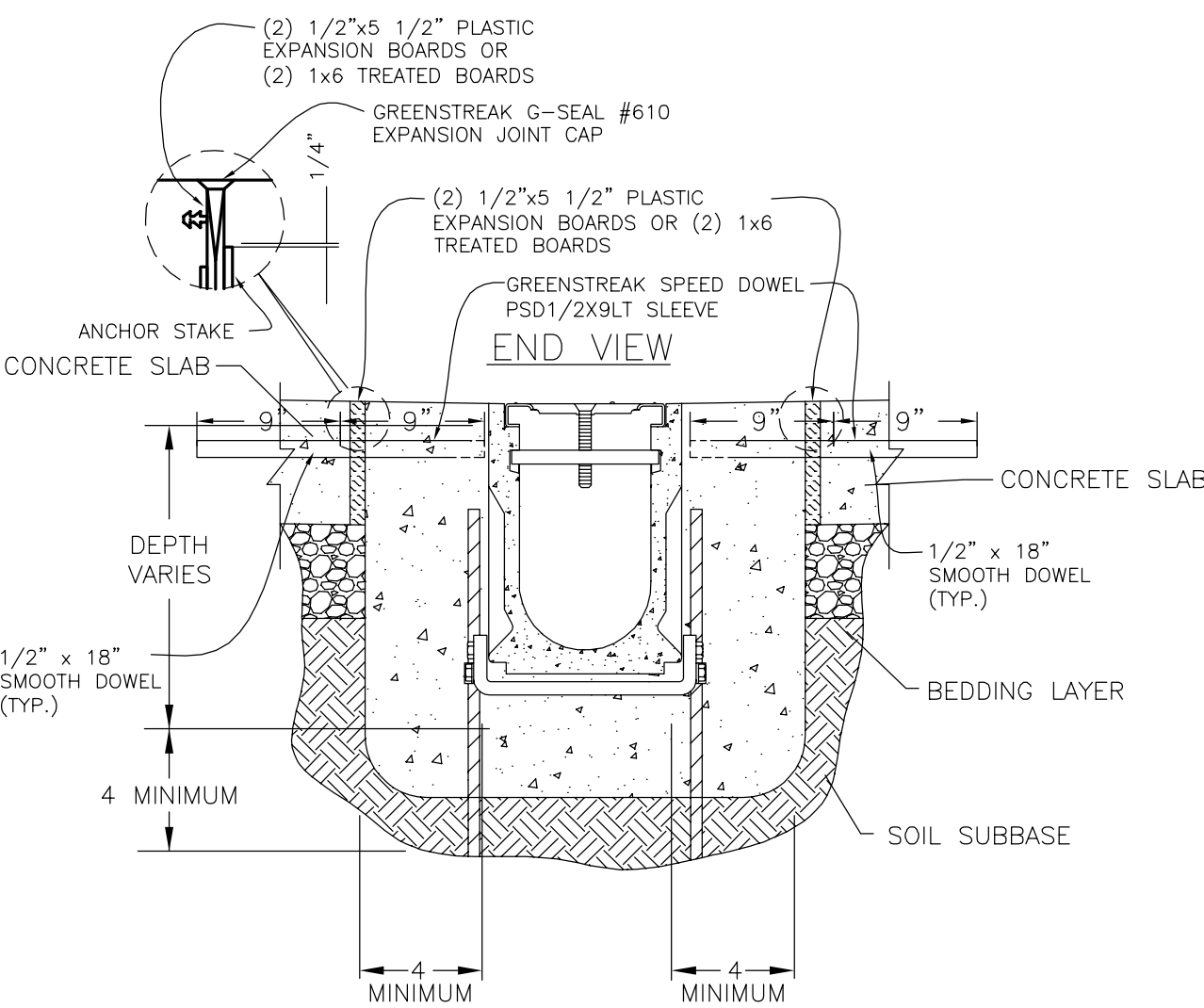
3621 Industrial Park Drive
Lenoir City, TN 37773
Phone: 800-346-3061 or 865-986-8726
Web: <http://www.polycastusa.com>
e-mail: hsalterature@hubbell.com

**POLYCAST
600 SERIES
INSTALLATION DETAIL**

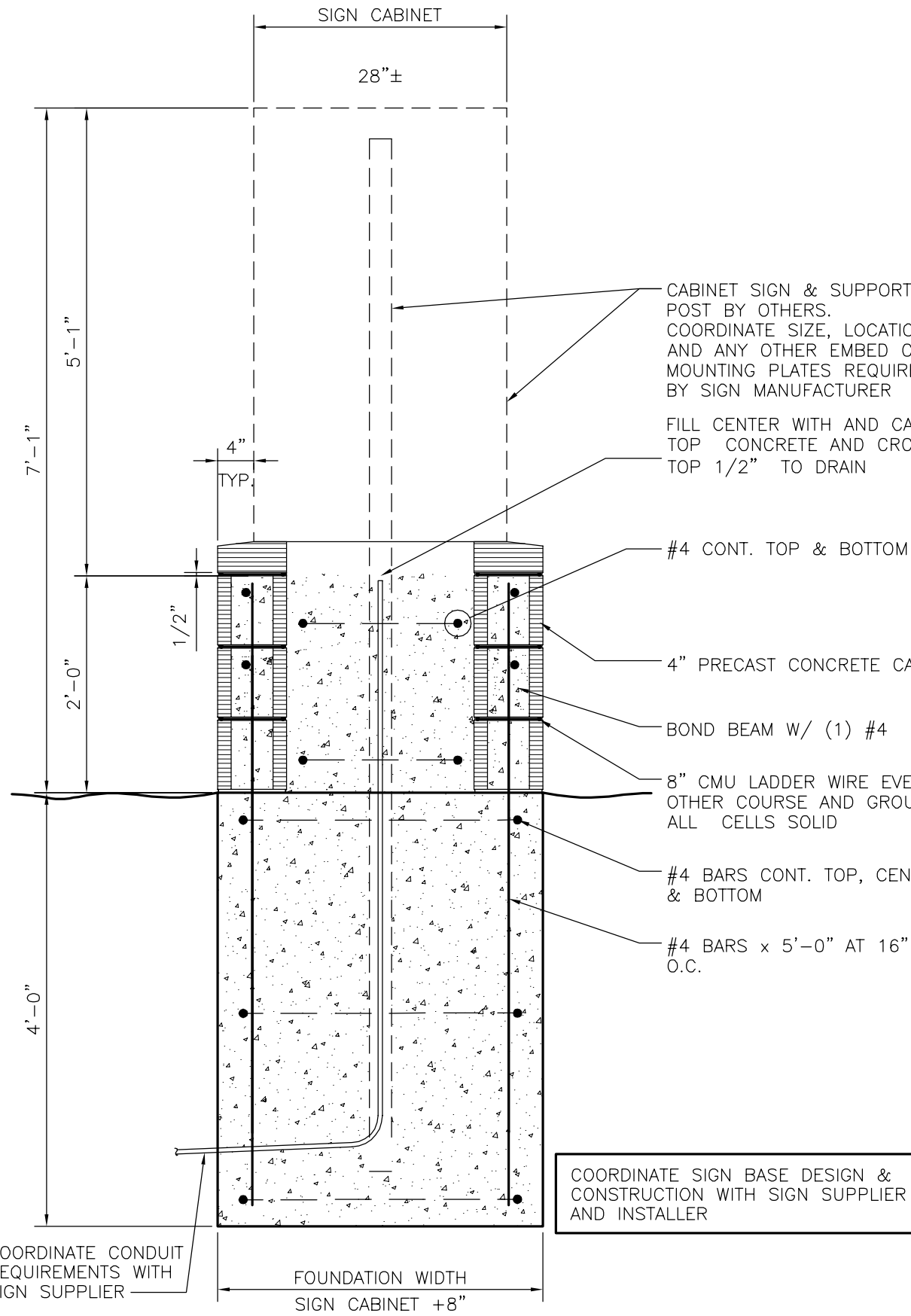
LITERATURE NO.
PC1705

DATE
9/22/11

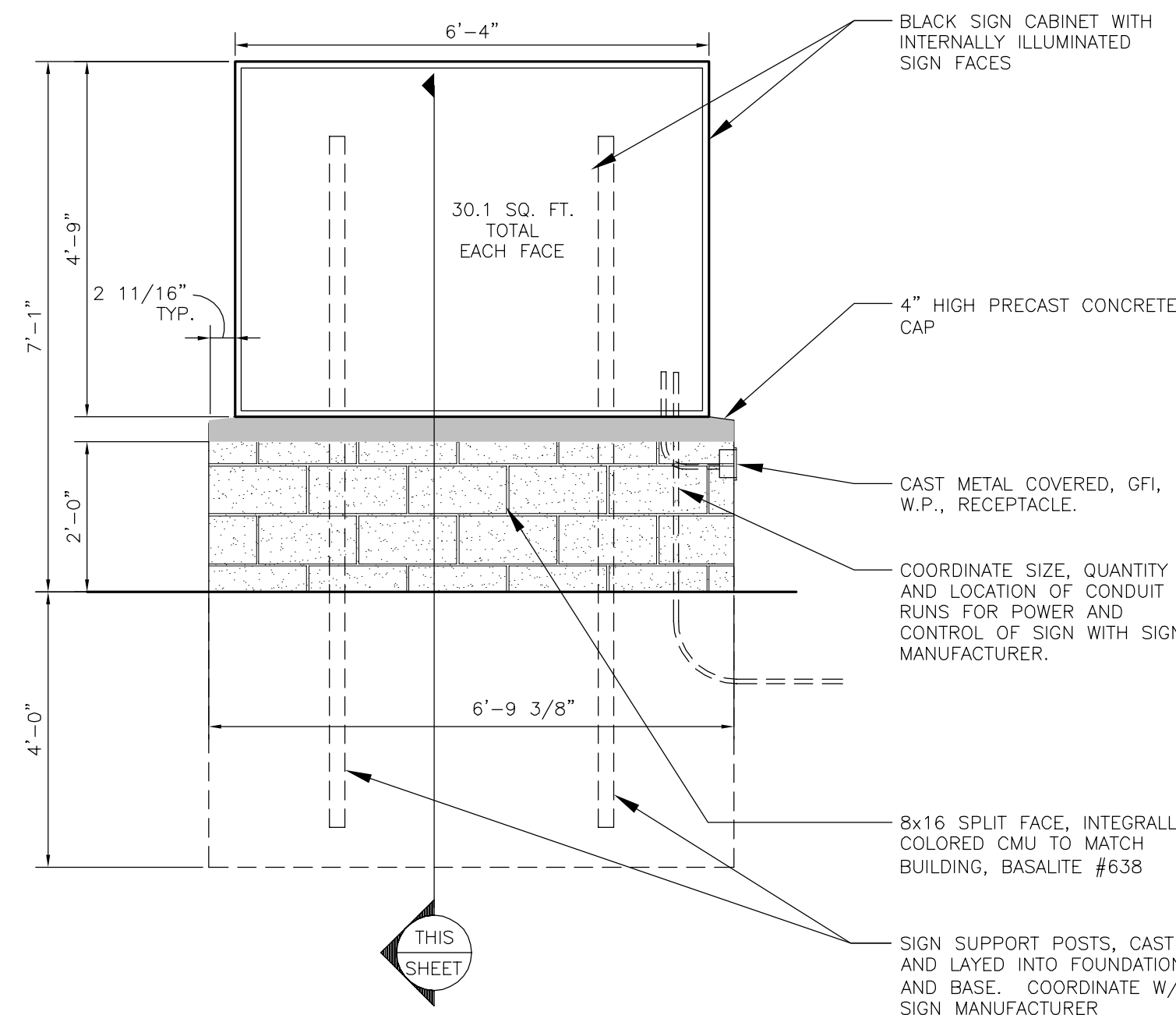
PROPRIETARY INFORMATION: This drawing embodies proprietary and confidential information, and is loaned by Hubbell with the understanding that it will not be disclosed in part or whole, and/or be used for any purpose other than maintenance, fabrication, or installation, unless expressly authorized, and that it be returned on demand. DISCLAIMER: The customer and the site architects, engineers, contractors and consultants are solely responsible for the selection, installation, and maintenance of all products purchased from Hubbell. POLYCAST® suggested concrete details are suggested minimums only; the customer's site planners and engineers are responsible for all site design, stability and integrity.



MODIFIED TRENCH DRAIN WITH DOWEL CONNECTIONS



MONUMENT SIGN SECTION
SCALE: 3/4" = 1'-0"



MONUMENT SIGN ELEVATION
SCALE: 1/2" = 1'-0"

DES.	DRAWN	DATE
BT	JBS	7/17/13
REV.	BY	DATE
1	JBS	7/17/13

Galloway
Planning, Architecture, Engineering
5300 DTC Parkway, Suite 100
Greenwood Village, CO 80111
303.770.8884
www.gallowayus.com

**MURPHY
EXPRESS**
MURPHY OIL U.S.A. INC.
422 NORTH WASHINGTON
EL DORADO, ARKANSAS 71730

**MURPHY OIL
CONSTRUCTION DRAWINGS
MURPHY EXPRESS SITE**

Project No:
Sheet Scale: AS NOTED
Designed By: BAR
Drawn By: JKG
Date: MAY 2013
Disk File: MOC023_C10-UtilityDetails

UTILITY DETAILS

C10