

SOLID WASTE APPROVAL NOTE:

IF UPON FINAL INSPECTION OF THE REFUSE ENCLOSURE THE SOLID WASTE DEEMS THE REFUSE BINS INACCESSIBLE DUE TO THE SLOPE OF THE ENCLOSURE OR APPROACH, THE OWNER WILL PURCHASE AND MODIFY THE REFUSE BINS TO BRING THEM INTO COMPLIANCE.

SOLID WASTE APPROVAL

DATE _____

KEYED NOTES

1. EXISTING CURB & GUTTER TO REMAIN.
2. EXISTING SIDEWALK TO REMAIN.
3. ASPHALT PAVING, PER DETAIL ON SHEET CP-501.
4. CONCRETE PAVING, PER DETAIL ON SHEET CP-501.
5. PCC MEDIAN CURB & GUTTER, PER DETAIL ON SHEET CP-501.
6. PCC FLATWORK, PER DETAIL ON SHEET CP-501.
7. 4" WHITE STRIPE IN TRAFFIC PAINT TYP.
8. CROSS WALK / EXIT LANE STRIPING, PER DETAIL ON SHEET CP-501.
9. DIRECTION ARROW, PER DETAIL ON SHEET CP-501.
10. ADA ACCESSIBLE RAMP, PER DETAIL ON SHEET CP-501
11. ADA PARKING, PER DETAIL ON SHEET CP-501.
12. ADA PARKING SIGNAGE, PER DETAIL ON SHEET CP-501.
13. REFUSE ENCLOSURE, SEE ARCHITECTURAL PLANS.
14. LANDSCAPING, SEE LANDSCAPE PLANS.
15. BIKE RACK, SEE ARCHITECTURAL PLANS FOR DETAIL..
16. "ONE WAY" PAVEMENT MARKINGS.
17. PARKING BUMPER.
18. MINI CLEAR SIGHT TRIANGLE. SEE GENERAL NOTE E.
19. DRIVE THRU EXIT SIGNAGE, SEE ARCHITECTURAL FOR DETAIL..
20. DO NOT ENTER SIGNAGE PER DETAIL ON SHEET CP-501.
21. ONE-WAY SIGN PER DETAIL ON SHEET CP-501.
22. MOTORCYCLE PARKING, SIGNAGE PER DETAIL ON SHEET CP-501.
23. ALONG DASHED LINE, PAINT FACE AND TOP OF CURB RED AND PAINT WHITE STENCILLED LETTERING ON TOP OF CURB "NO PARKING" AND "FIRE LANE" ALTERNATING AT 30 FT. O.C.
24. STANDARD CURB & GUTTER, PER COA STD DWG 2415A.
25. DRIVEPAD PER COA STD DWG 2426.
26. PUBLIC SIDEWALK (WIDTH PER PLAN) PER COA STD DWG 2430.
27. NEW ADA RAMP PER COA STD DWG 2441.
28. STOP SIGN PER DETAIL ON SHEET CP-501.
29. EXISTING CMU WALL TO REMAIN. CONTRACTOR TO PAINT CHARCOL GRAY (OR OWNER APPROVED ALTERNATE. COLOR TO MATCH REFUSE/BUILDING) WITH ANTI-GRAFFITI PRIMER. CONTRACTOR TO REMOVE BARBED WIRE WHERE APPLICABLE.
30. DRIVE THRU SCREENING. 3' SOLID CMU WALL OR APPROVED LANDSCAPING, TO BE DETERMINED BY OWNER.

PROJECT INFORMATION

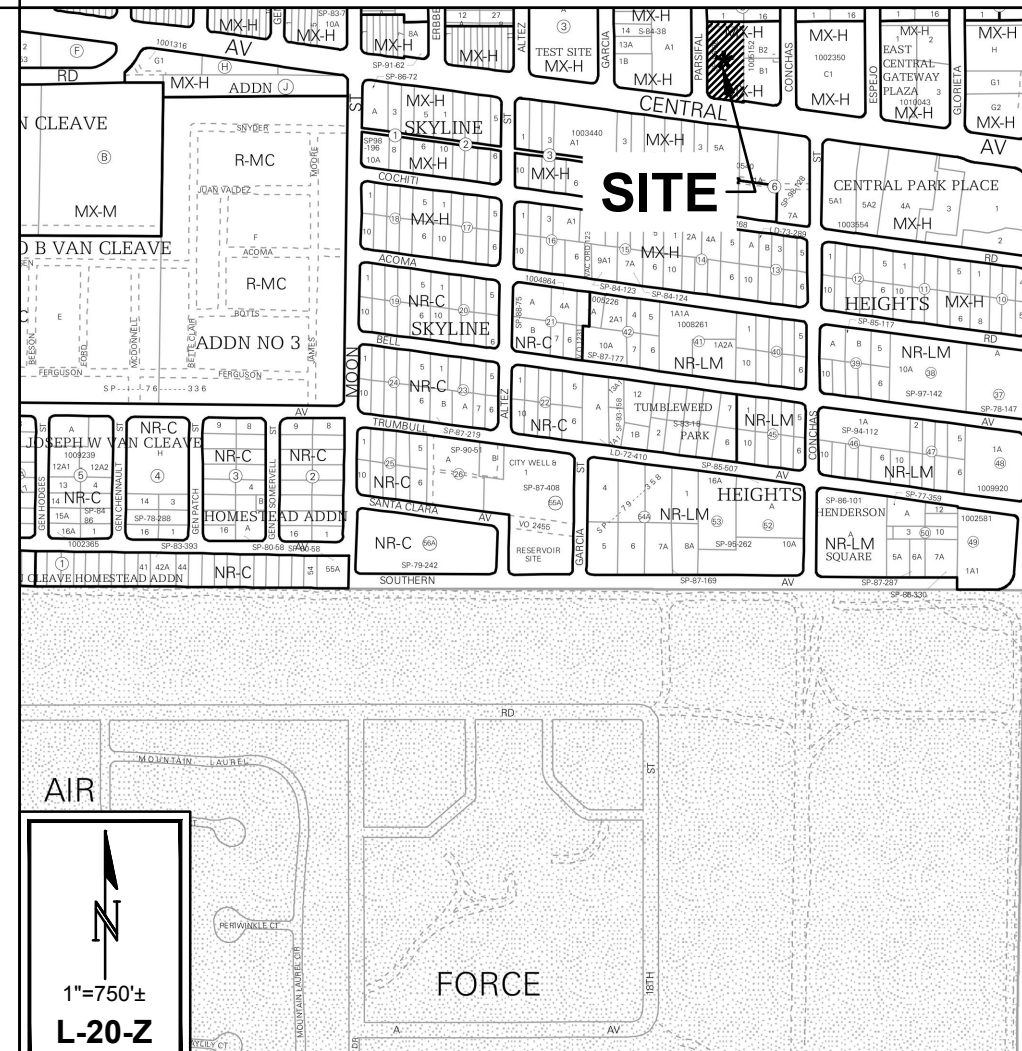
PARKING CALCULATION (IDO Table 5-5-1):
 8 SPACES PER 1,000 GFA = 8 PARKING SPACES REQUIRED
 TOTAL PARKING REQUIRED= 8
 TOTAL PARKING PROVIDED = 12 (including 1 ADA Van space)

DRIVETHRU QUEUING SPACES REQUIRED PER IDO TABLE 5-5-8=12
DRIVETHRU QUEUING SPACES PROVIDED=12+

MOTORCYCLE PARKING REQUIRED = 1 (IDO Table 5-5-4)
MOTORCYCLE PARKING PROVIDED = 1

BICYCLE PARKING REQUIRED = 3 (IDO Table 5-5-5)
BICYCLE PARKING PROVIDED = 3 (3 bicycles per 1 bike rack)

VICINITY MAP

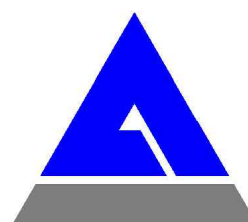
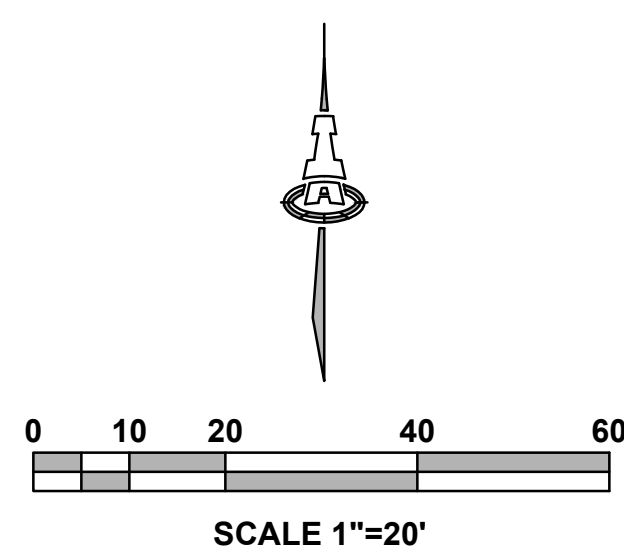


GENERAL NOTES

- A. DIMENSIONS ARE TO FACE OF CURB, OR WALL, OR EDGE OF PAVEMENT UNLESS OTHERWISE NOTED.
- B. ALL CURB RADII ARE 2' UNLESS OTHERWISE NOTED.
- C. CURBS AND ACCESSIBLE RAMPS WILL BE DESIGNED AND BUILT ACCORDING TO THE CITY OF ALBUQUERQUE STANDARDS.
- D. STREETS, PARKING SPACES AND ASSOCIATED DRIVES TO BE ASPHALT UNLESS NOTED OTHERWISE.
- E. LANDSCAPING AND SIGNAGE WILL NOT INTERFERE WITH CLEAR SIGHT REQUIREMENTS. THEREFORE, SIGNS, WALLS, TREES, AND SHRUBBERY BETWEEN 3 AND 8 FEET TALL (AS MEASURED FROM THE GUTTER PAN) WILL NOT BE ACCEPTABLE IN THE CLEAR SIGHT TRIANGLE.
- F. ALL BROKEN OR CRACKED SIDEWALK MUST BE REPLACED WITH SIDEWALK AND CURB & GUTTER. NEW CURB & GUTTER TO BE CONSTRUCTED PER COA STD DWG 2415A. NEW SIDEWALK TO BE CONSTRUCTED PER COA STD DWG 2430.
- G. FIVE WORKING DAYS PRIOR TO ANY EXCAVATION, THE CONTRACTOR MUST CONTACT NEW MEXICO ONE CALL SYSTEM (505-260-1990) FOR LOCATION OF EXISTING UTILITIES.
- H. PRIOR TO CONSTRUCTION, THE CONTRACTOR SHALL EXCAVATE AND VERIFY THE HORIZONTAL AND VERTICAL LOCATIONS OF ALL OBSTRUCTIONS, SHOULD A CONFLICT EXIST, THE CONTRACTOR SHALL NOTIFY THE ENGINEER IMMEDIATELY SO THAT THE CONFLICT CAN BE RESOLVED WITH A MINIMUM AMOUNT OF DELAY.
- I. CONTRACTOR TO VERIFY LOCATION OF EXISTING CURB, ASPHALT, AND CONCRETE PAVEMENT TIE-IN LOCATIONS AND MATCH EXISTING WITH SMOOTH TRANSITION. NOTIFY ENGINEER OF ANY DISCREPANCIES.
- J. SEE CD-100 - DEMOLITION PLAN FOR EXTENTS OF ASPHALT, CURB, AND SIDEWALK REMOVAL.

LEGEND

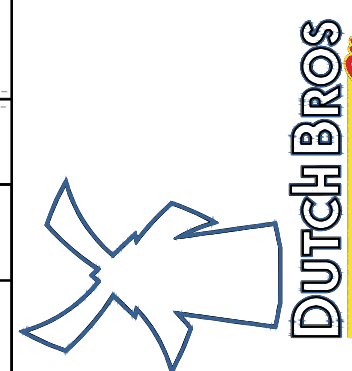
-
- Diagram illustrating the proposed curb and gutter cross-section components and dimensions:
- EXISTING CURB AND GUTTER
 - PROPOSED CURB AND GUTTER
 - ADA PATHWAY (6' TYP., CLEAR PATH)
 - DRIVE THRU QUEUING SPACE (8'x20')
 - ASPHALT PAVING SECTION
 - PCC PAVING SECTION
 - POST MOUNTED SIGN



© 2020 Isaacson & Arfman, Inc.
This design, calculations, and
concepts are owned by and
remain the property of Isaacson &
Arfman, Inc. and no part thereof
shall be utilized by any person,
firm or corporation for any
purpose whatsoever except with
the written permission of
Isaacson & Arfman, Inc.



Engineer 02/15/2023



Dutch Bros. Coffee
10001 Central Ave NE



SHEET TITLE		No	Date	Description	DESIGN ISSUE: DEVELOPMENT
<div style="text-align: center;"> <h1>TCL & PAVING PLAN</h1> </div>					
SHEET NUMBER		<div style="text-align: center;"> <h1>CP-101</h1> </div>			